



2025 NPDES Stormwater Report

April 7th, 2025

Parks & Public Works

PURPOSE



Educate the committee on NPDES Stormwater Permit requirements, accomplishments, and upcoming projects

Background



- EPA - Clean water act (1972)
- DoE manages permits for Wa Cities
- Ph. II Permittee (<100,000 pop.)
- Ecology Stormwater Management Manual For Western Washington
- 2024-2029 Permit Cycle ←

Stormwater Management Manual
for Western Washington



2025 Stormwater Highlights



- Inspected 1569 Catch basins. Cleaned 366
- Inspected all 62 facilities. Performed maint. On 51
- Created Ed & Outreach plan
- Inspected 3 construction sites
- Performed 25 business inspections, resulting in 4 corrective action letters
- Received \$135k in grants - biannual



Bio-Swale Clearing



NPDES Stormwater Permit



2024-2029 Permit Cycle Components

1. Stormwater Planning
2. Public Education and Outreach
3. Public Involvement and Participation
4. System Mapping and Documentation
5. Illicit Discharge Detection and Elimination
6. Controlling Runoff from New Development, Redevelopment & Construction Sites
7. Stormwater Management for Existing Development (SMED) & (SMAP)
8. Source Control for Existing Development
9. Operations and Maintenance



March 18, 2024

Prepared by

City of Snoqualmie

Parks and Public Works Department

P.O. Box 987

Snoqualmie, Washington 98065

General Ongoing Items



- Ongoing Implementation of Ed & Outreach programs
- Promote stewardship activities
- Illicit Discharge Detection Elimination Program
 - Maintain hotline and response for illicit discharges
 - Field screen 12% of MS4/ yr
- Educate & inspect 20% of businesses for potential stormwater runoff annually
- Operation & Maintenance
 - Inspect all 62 City owned facilities annually
 - Perform maintenance accordingly
 - Inspect 100% of ~3100 Catch basins every other year
 - Clean out if 40% full or more (~400 per year)
- Ensure New Development meets Stormwater Code
 - Review all site plans for compliance
 - Inspect all construction sites
 - Verify maintenance plan in place accordingly



New Permit Items



2025 - Completed

- Develop Social Marketing campaign based on 2024 evaluation
- Begin social marketing campaign

2026

- Submit locations of all MS4 outfalls
- Begin identifying tree canopy

 = Resource Heavy Item

 = Already being done

2027

- Implement procedures to reduce PFAS spread during firefighting procedures
- Track costs to implement permit
- Coordination with long range plan updates
- **SMAP (Stormwater Management Action Plan) for at least one new priority catchment area or additional actions for existing SMAP (Kimball Creek)**
- Adopt updated stormwater design manual: Stormwater Manual for Western Washington → King County Surface Water Design Manual

New Permit Items Cont.



2027 - Continued

- Update Illicit discharge ordinance
- **Develop and implement municipal street sweeping program**
- Update source control ordinance and/ or enforceable documents
- Update SOPs to address PCBs in City-owned buildings

2028

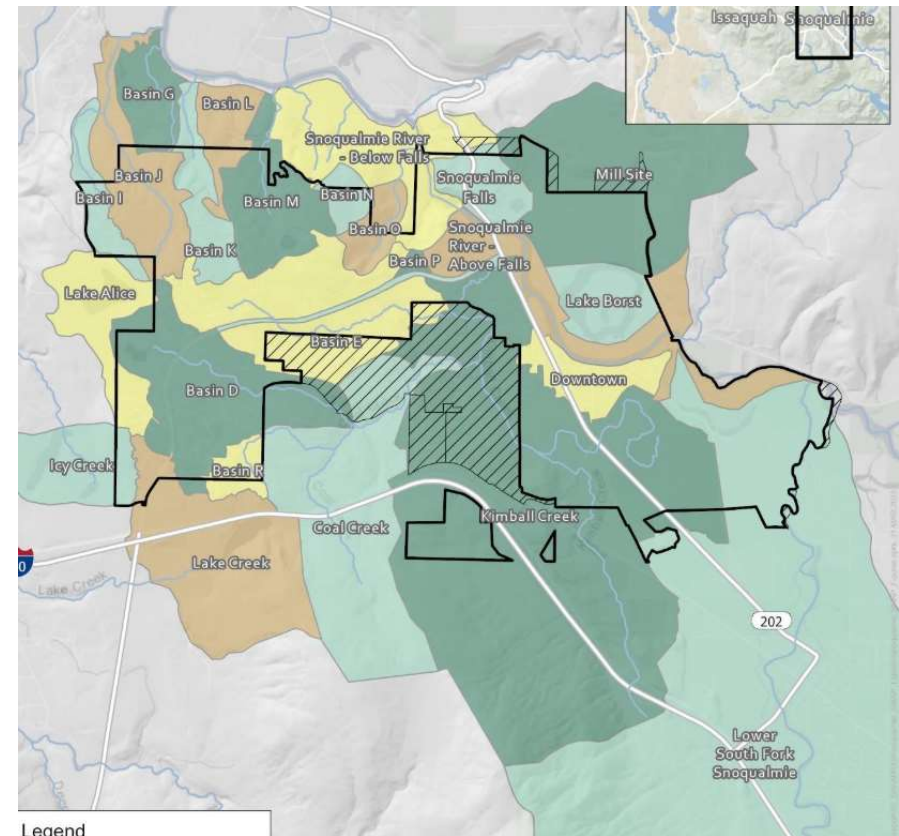
- Map and assess acreage of MS4 basins to 24"+ outfalls and estimate area managed by stormwater treatment and flow control facilities
- **S5.C.7.c – Stormwater Management for Existing Development (SMED)**
- **Adopt and implement tree canopy goals**
- Map overburdened communities in relation to stormwater

 = Resource Heavy Item

 = Already being done

Stormwater Management Action Plan

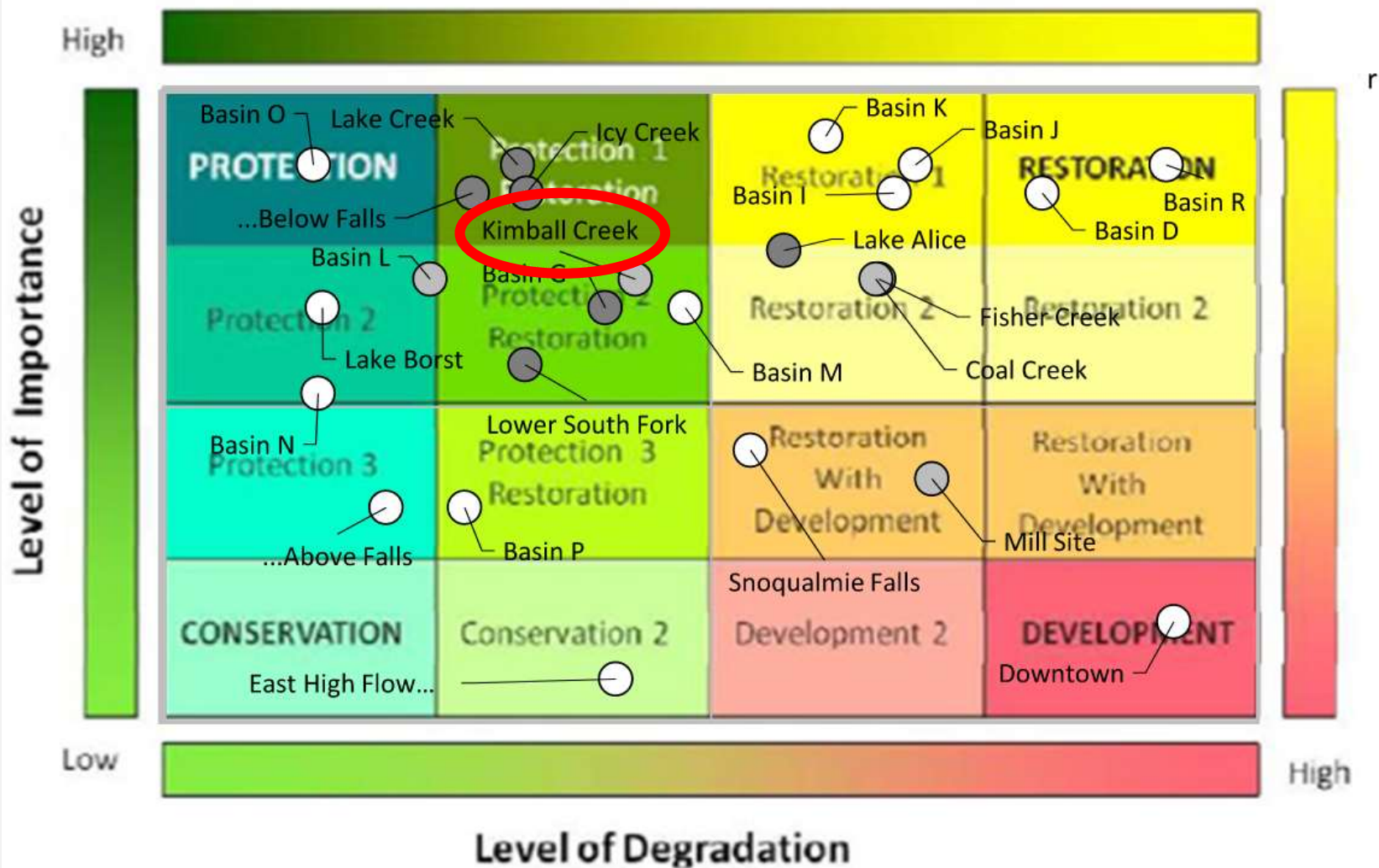
- Perform citywide watershed assessment
 - Prioritize watersheds for retrofits and other stormwater actions
 - Create list of potential projects for watershed
 - Develop a Stormwater management action plan
- 2024 SMAP selected Kimball Creek as Priority watershed



SMAP

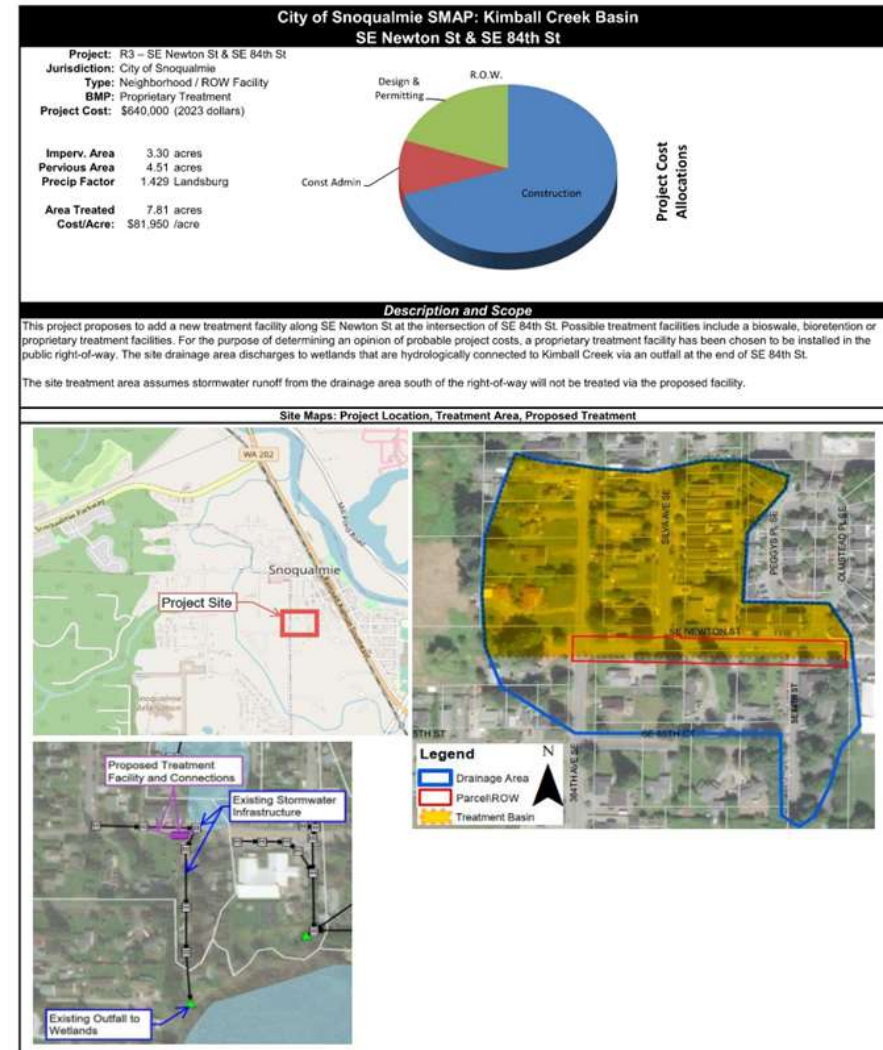


Stormwater Management Action Plan



Stormwater Management for Existing Development

- Implementation of the SMAP
- By 2028 - Fully fund/ start construction that restores 2.3 acres of Kimball Creek basin
- Report the amount of estimated or projected equivalent acres managed by stormwater retrofits for the next Phase II Permit
- CIP item Kimball Creek Riparian Restoration covers this cost





**Thank You
&
Questions?**



