

# 8050 Railroad Ave

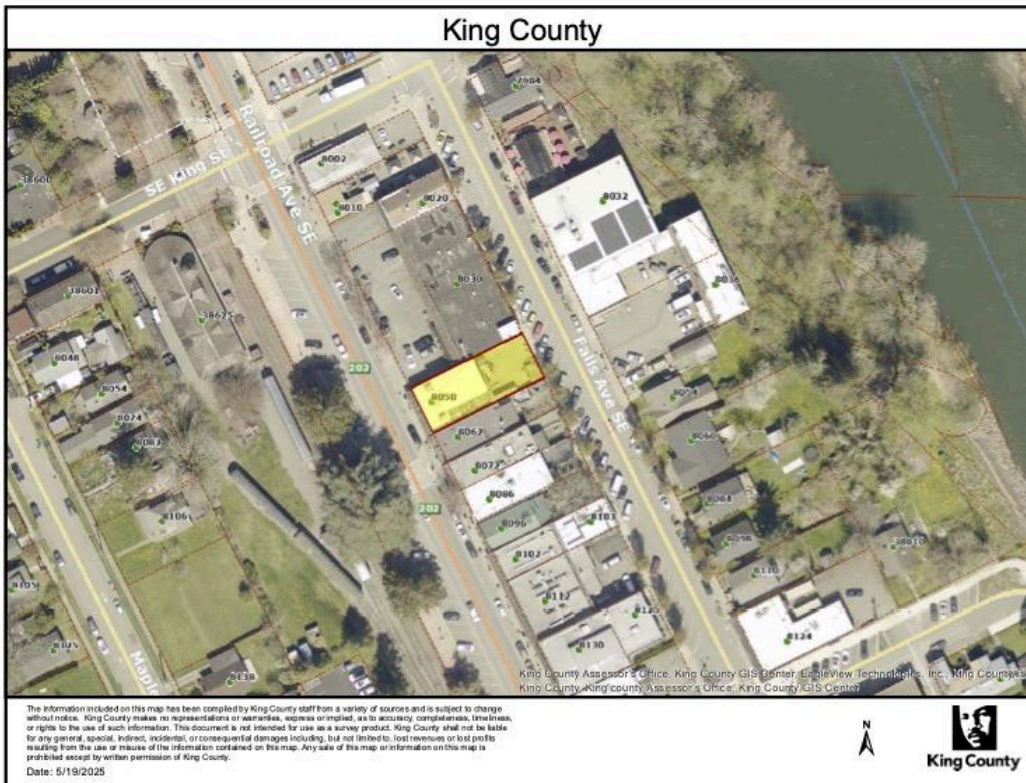
March 15, 2026

## OVERVIEW

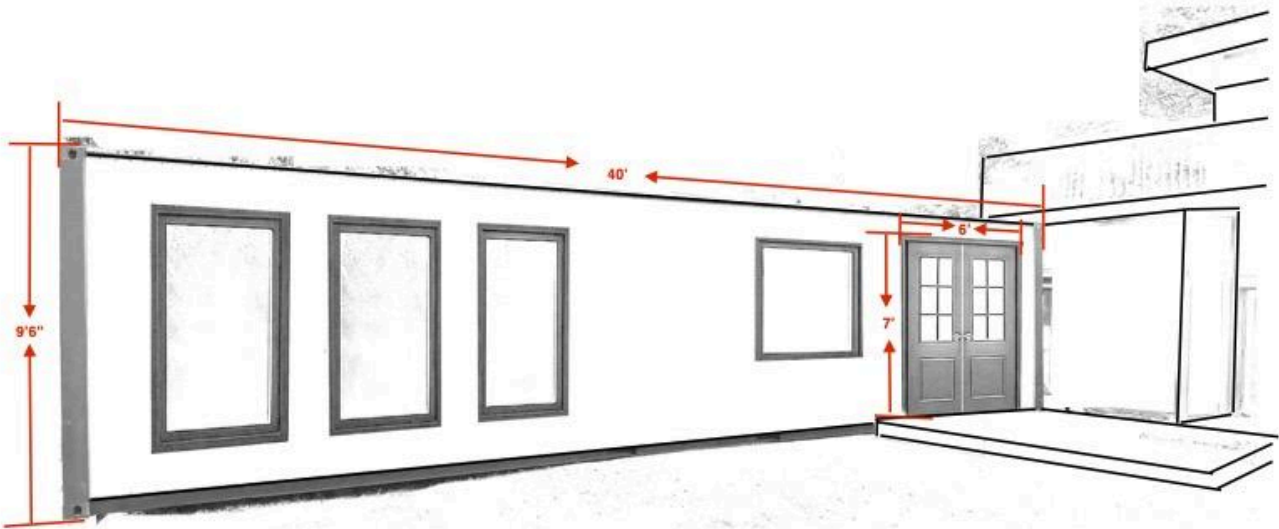
We are submitting an application for the design board review TYPE II.

- Place an outfitted container on the gravel back lot for storage and back office space to Mini Treehouse..

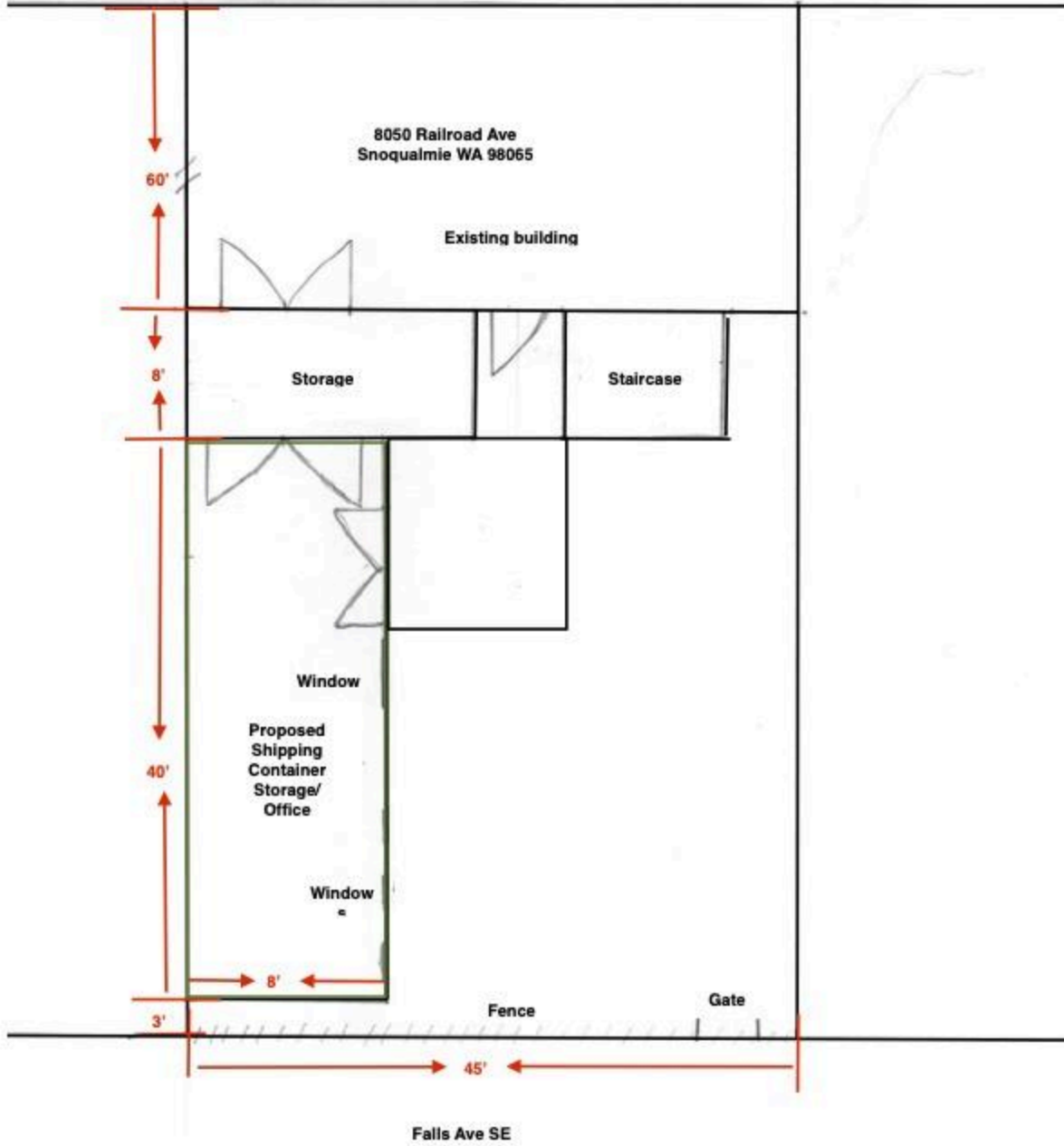
## SITE PLAN



**ELEVATION: 9'6 high. See details. The container will attach to the existing building.**



Railroad Ave



---

## MATERIAL

Building: Painted container from approved color palette (Rookwood DarkGreen (SW 2816), with approved black trim (Black(BM 2132-10)

We will also make windows and doors with black trim windows as the current front of 8050. Lighting the same as previously approved for front of 8050.

The existing fence will be reinstalled along the property line. Cedar fencing.



## CONTAINER for Storage

Placed on the back gravel lot. 10x40



LIGHTING: Will Add lighting to the exterior of the container.

