



## **TYPE I HISTORICAL DESIGN REVIEW**

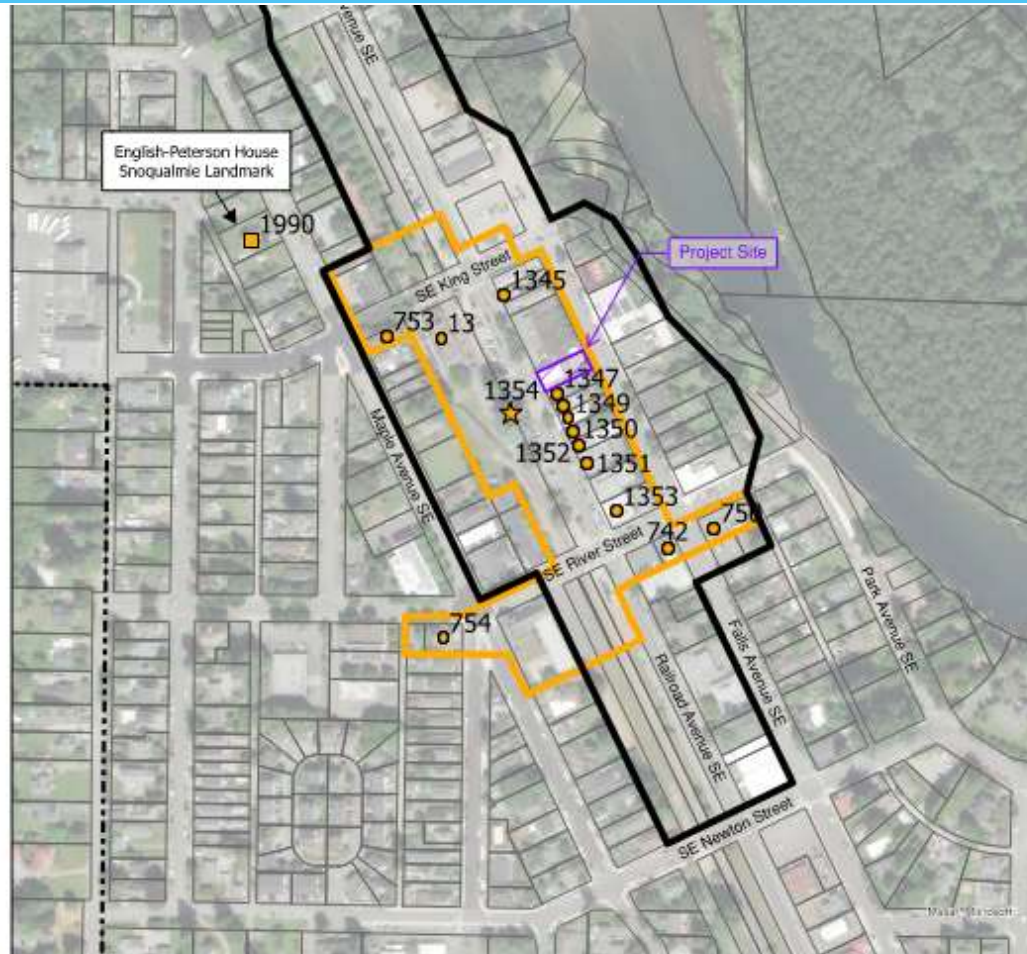
**Project Name: 8050 Shipping  
Container**

**Site Address: 8050 Railroad Ave SE  
Project Number: DRB2026-0004**

**Allison Kirk, AICP, Associate Planner**



# Historic Designation Map



## Legend

### Districts and Overlays

- Landmark District
- Downtown Overlay
- City Limits
- Parcels

### Landmark Type

- Contributing Building
- Contributing Site
- Landmark



# Existing Conditions





# Proposed



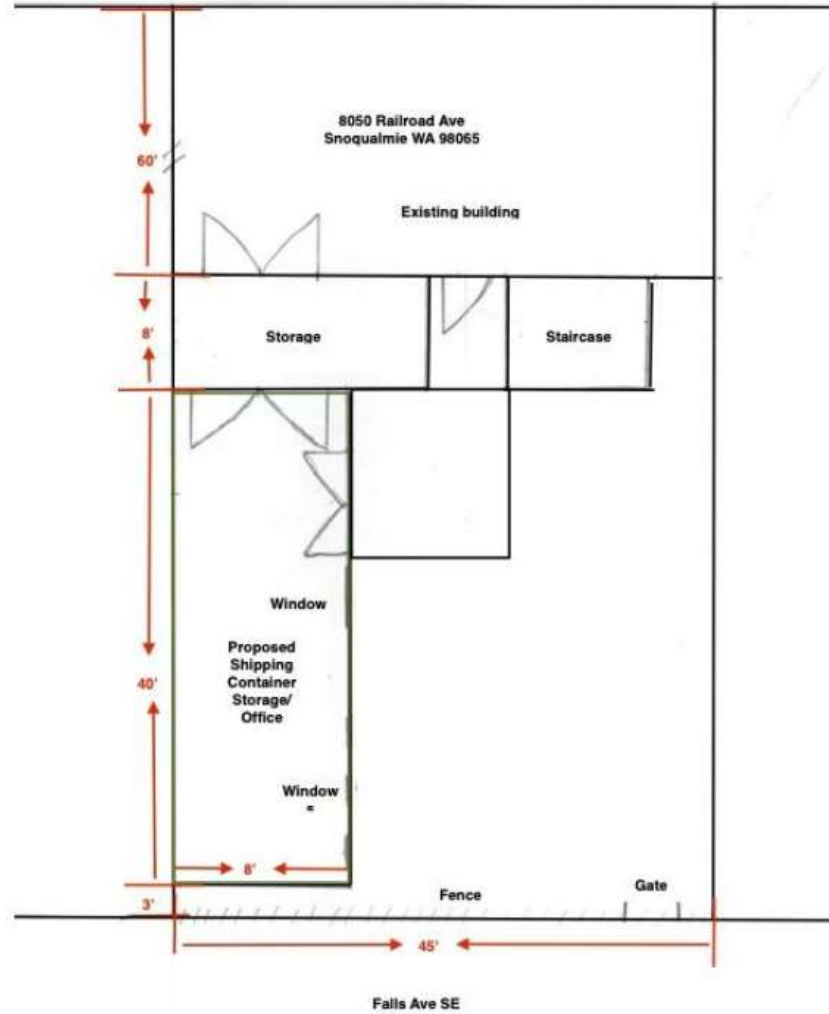
Rookwood Dark  
Green (SW 2816)  
RGB: 86, 92, 74  
Hex Value: #565C4A



Black  
(BM 2132-10)  
RGB: 49, 49, 50  
Hex Value: #313132



# Site Plan



# Staff Recommendations



Staff finds that the application is substantially consistent with the design guidelines for construction within the Overlay District and Landmark District described by SMC 17.35. Staff recommends **APPROVAL** for Historical Design Review DRB2026-0004, **with condition**.



**Thank You**  
**Questions?**

**Contact: [akirk@snoqualmiewa.com](mailto:akirk@snoqualmiewa.com)**

**[www.snoqualmiewa.gov](http://www.snoqualmiewa.gov)**