



# **Stormwater Pond Improvement Program**

**April 21, 2026**

**Parks & Public Works**

# PURPOSE



Update PPW Committee  
to Support & Defend  
Pending Stormwater  
Pond Improvement  
Program

# Funding Uses



## Fence Repair & Replacement

- ~43,000 linear feet of fencing
- All to be replaced into 6' chain-link
- Costs ~\$60/ lf
  - Total \$2.5M to replace all fences in today's dollars
  - ~14 years to replace all fences if 100% program \$\$\$ went to fences
- Targeting 2 ponds in 2026
  - 2,614 LF = \$157k



# Funding Uses Cont



## Pond Cleaning & Repair

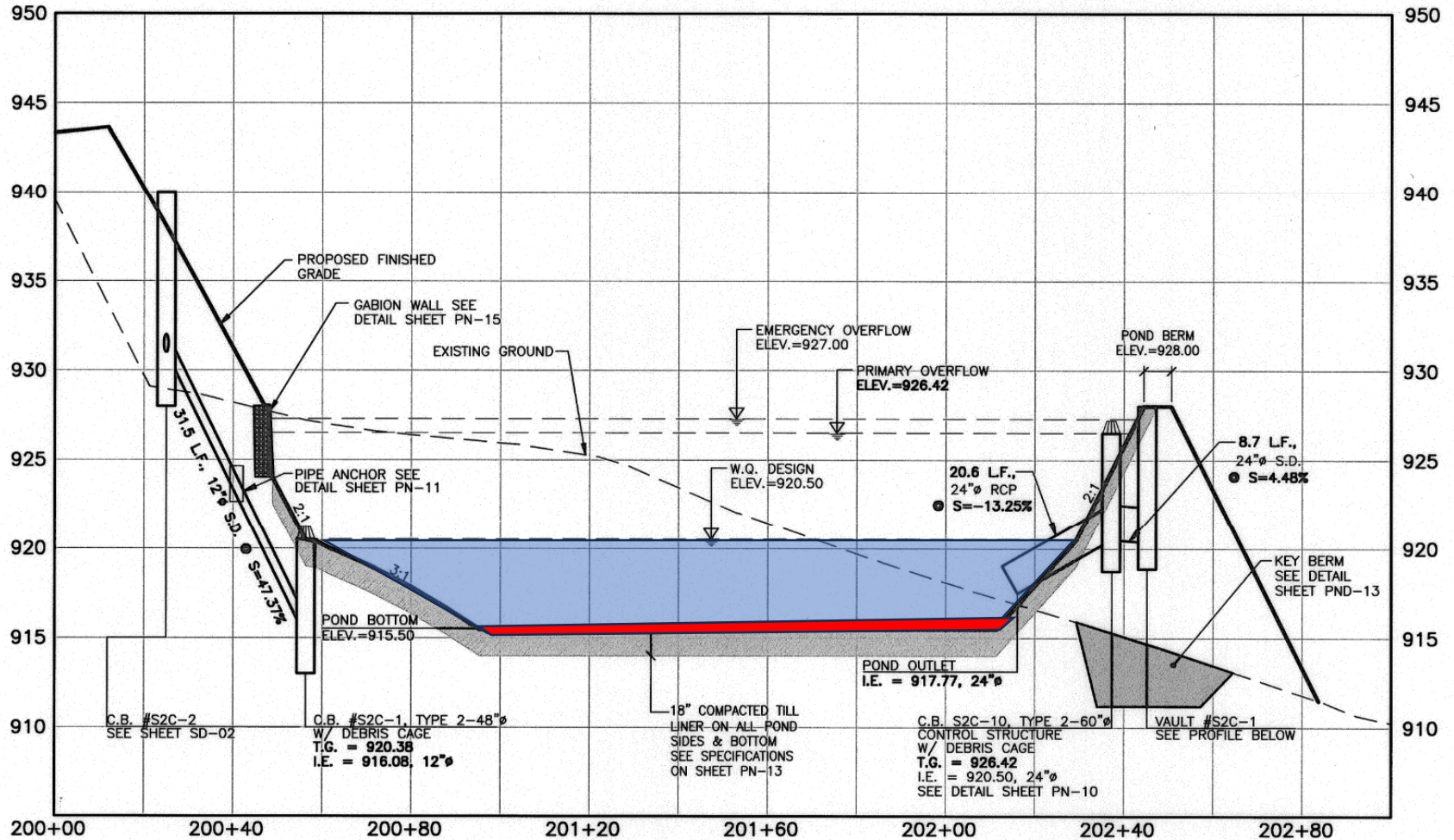
- 43 Ponds and 16 swales
- Both require routine cleaning of sediment
- 10-year maintenance cycle
- ~\$35k - \$50k per pond
- Requirement per NPDES – clean out @ 10% pond depth



# Brinkley Pond



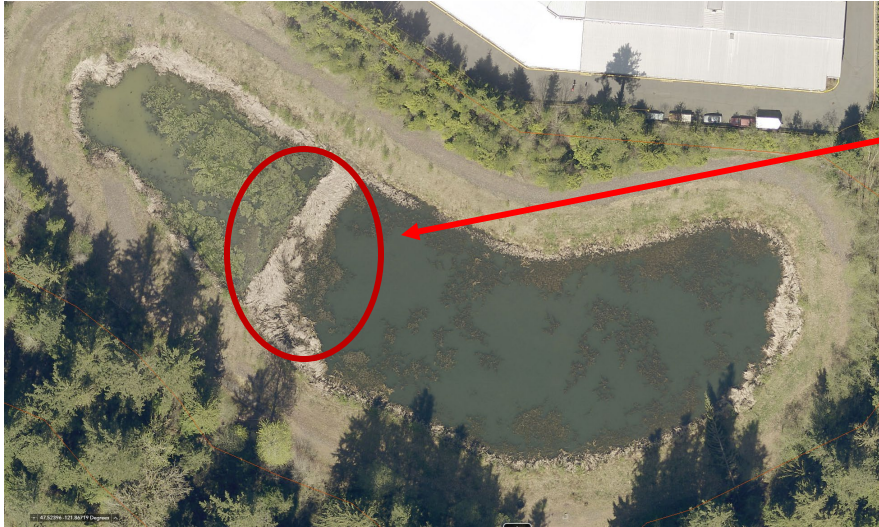
# Pond Cleaning



**POND S2C SECTION A-A**

SCALE: 1"=20' HORIZ.  
1"=5' VERT.

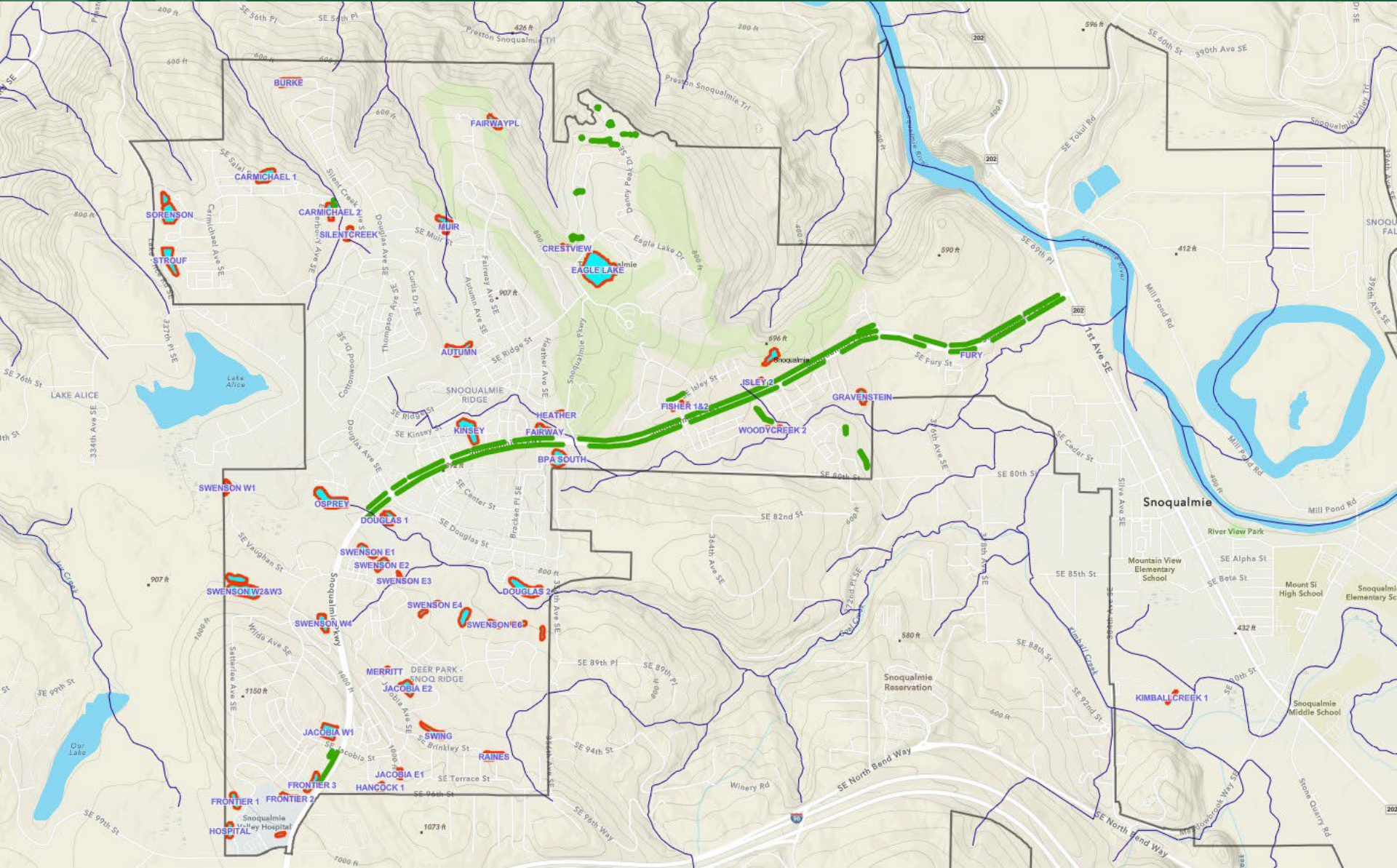
# Pond SRBP II



- Baffle wall floated away



# City Ponds





**Thank You  
&  
Questions?**



# Background



## City of Snoqualmie: 2025 to 2030 Capital Improvement Plan



### STORMWATER CAPITAL PROJECT OR PROGRAM

### STORMWATER POND IMPROVEMENT PROGRAM

**CIP Project ID:** TBD

**Department:** Stormwater

**Project Status:** Other

**Project Location:** Multiple Locations

**Project Contact:** Pat Fry

**Current Program Budget:** **\$1,164,314**

**Years Project in CIP:** Ongoing Capital Program

**Contact Email:** [PFry@snoqualmiewa.gov](mailto:PFry@snoqualmiewa.gov)

#### Project Description:

The City of Snoqualmie has over 60 stormwater treatment pond facilities that require routine maintenance on an annual basis. Beyond routine maintenance, additional activities are needed on a less frequent but recurring basis, including fencing repair/replacement, sediment removal, flow control structure repairs, access roads, etc. This program provides for these exceptional maintenance activities.

#### Community Impact:

Stormwater ponds protect rivers and streams by removing pollutants from stormwater runoff and attenuating flows that cause erosion and scour in receiving streams. Proper pond maintenance ensures continued protection of the natural environment, reduces remediation costs to receiving facilities, and provides for continued compliance with State and Federal NPDES permit requirements.

#### Photo or Map:



#### Operating Impact:

Provides consistent funding source for stormwater pond improvements beyond routine maintenance activity; not expected to create significant impacts to the budget.

# Budget



<i>Project Activities</i>	<i>% of Budg.</i>	<i>Total Activity Budget</i>	<i>2025</i>	<i>2026</i>	<i>2027</i>	<i>2028</i>	<i>2029</i>	<i>2030</i>	<i>2030 or Beyond</i>
Analysis	0%	\$ -	\$ -	\$ -	\$ -	\$ -	\$ -	\$ -	This capital program is anticipated to continue indefinitely into the future.
Design	0%	\$ -	\$ -	\$ -	\$ -	\$ -	\$ -	\$ -	
Construction	90%	\$ 1,047,882	\$ 162,000	\$ 166,860	\$ 171,866	\$ 177,022	\$ 182,332	\$ 187,802	
Const. Manage	0%	\$ -	\$ -	\$ -	\$ -	\$ -	\$ -	\$ -	
Contingency	10%	\$ 116,431	\$ 18,000	\$ 18,540	\$ 19,096	\$ 19,669	\$ 20,259	\$ 20,867	
Art	0%	\$ -	\$ -	\$ -	\$ -	\$ -	\$ -	\$ -	
Labor	0%	\$ -							
Other	0%	\$ -							
<b>TOTAL</b>	<b>100%</b>	<b>\$ 1,164,314</b>	<b>\$ 180,000</b>	<b>\$ 185,400</b>	<b>\$ 190,962</b>	<b>\$ 196,691</b>	<b>\$ 202,592</b>	<b>\$ 208,669</b>	
Operating		\$ -	\$ -	\$ -	\$ -	\$ -	\$ -	\$ -	

**Anticipated Funding Mix:**

**TOTAL PROJECT BUDGET: \$1,164,314**  
**TOTAL OPERATING BUDGET: \$0**