

The City of Snoqualmie Comprehensive Plan

2024 Update - **Transportation Element**



Washington State Law requires a Transportation Element to the City of Snoqualmie's Comprehensive Plan

Under RCW 36.70A.070(6) – Mandatory Elements:

A transportation element that implements, and is consistent with, the land use element. The transportation element shall include the following subelements:

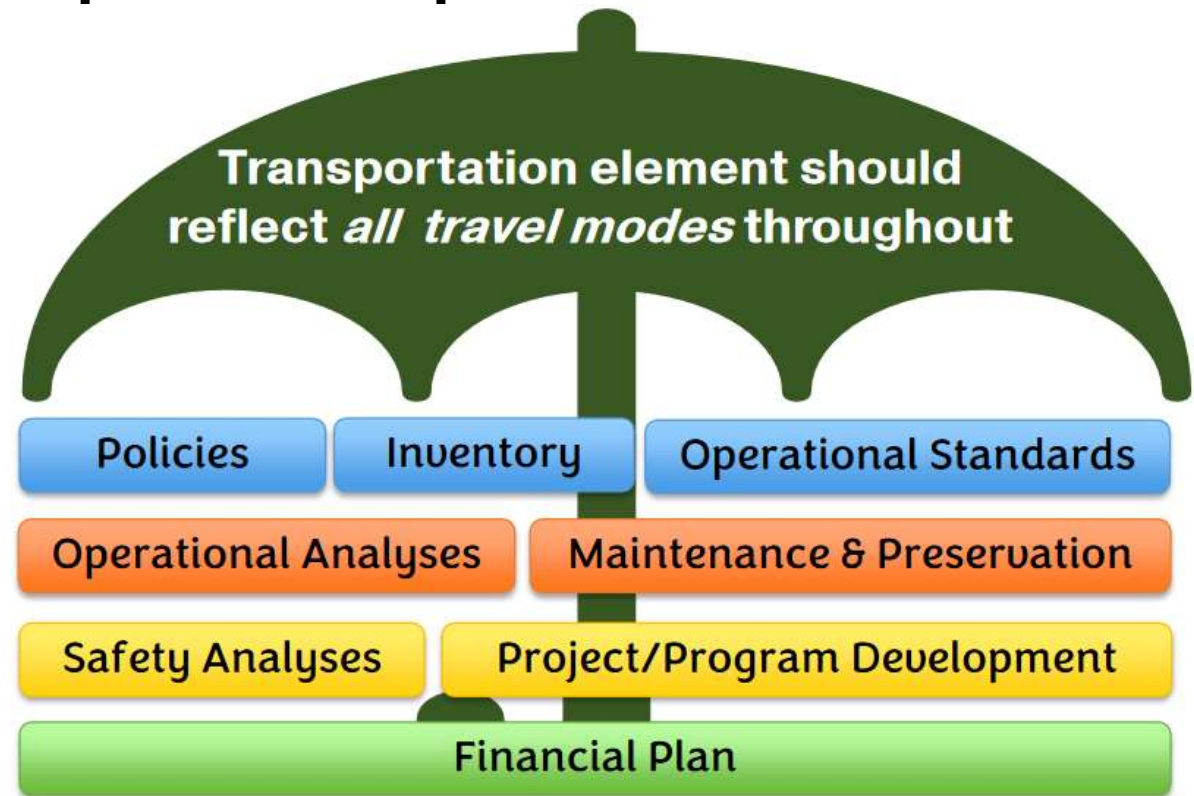
- Land use assumptions used for estimating travel demand
- Inventory of air, water and ground transportation facilities
- Level of Service standards for all local and state transportation facilities
- Forecasts of traffic based on land use and growth projections
- Requirements of bringing transportation facilities that fall below LOS based upon forecast
- Financing analysis – 20 year and 6 year
- Demand Management Strategies
- Pedestrian and Bicycle component

The City of Snoqualmie Comprehensive Plan Transportation Element – **All the Things!**



The Transportation Element requirements include all three of the components of a GMA compliant comprehensive plan:

- Goals and Policies
- Capital Facilities and Financing
- Maps/Figures



The City of Snoqualmie Comprehensive Plan Transportation Element – **Consistency is Key**



The Transportation Element also must be consistent with PSRC and Countywide Policies:

GMA transportation related requirements	Consistency with VISION 2050 MPPs + Certification
Consistent land use assumptions and travel demand forecasts	Regional Growth Strategy
Service and facility needs	Climate change, air quality and VMT provisions
Plan for transportation financing and projects	Transit oriented development (TOD)
Demand management	Housing supply and choices near transit
Pedestrian and bicycle planning	Consistent with PSRC project lists and financing

The City of Snoqualmie Comprehensive Plan Transportation Element – PSRC Framework



PSRC and Regional Transportation Plan:



VISION 2050 and the RTP emphasize development of a **multimodal transportation system** that encourages walking, biking, and transit, accommodates the movement of good throughout the region and to people's doors, and reduces dependence on driving alone.

The City of Snoqualmie Comprehensive Plan Transportation Element – Planning Framework



- The Regional Transportation Plan helps implement the land use plan and policies established under VISION 2050 at the regional level.
- The GMA required transportation element helps implement the land use plan and policies established at the local level.
- Coordination between planning and public works staff in development of the transportation element ensures work together to achieve long-range goals.



New transportation projects and programs identified in local comprehensive plan updates and demonstrated to be consistent with regional policies will be incorporated into the next Regional Transportation Plan update.

The City of Snoqualmie Comprehensive Plan 2024 Update – Public Input Received



Community Survey and Open House themes:

- Increased transit service accessibility, frequency and destinations
- Snoqualmie Parkway – speed, wear and tear, signalization
- Truck/freight traffic, wear and tear
- Safety – pedestrian, cyclist and vehicular conflicts
- Increased volume throughout city
- Congestion in key intersections/destinations
- Street, sidewalks and bridges conditions
- Bike paths in town and connections to out of town
- Concern about existing infrastructure supporting increased growth

The City of Snoqualmie Comprehensive Plan 2024 Update - **Transportation Element**



Transportation Element includes:

- Goals and Policies
- Inventory
- Level of Service Analysis
- Forecasts of Traffic based on land use and growth projections
- Financing analysis – 20 year and 6 year
- Pedestrian and Bicycle component

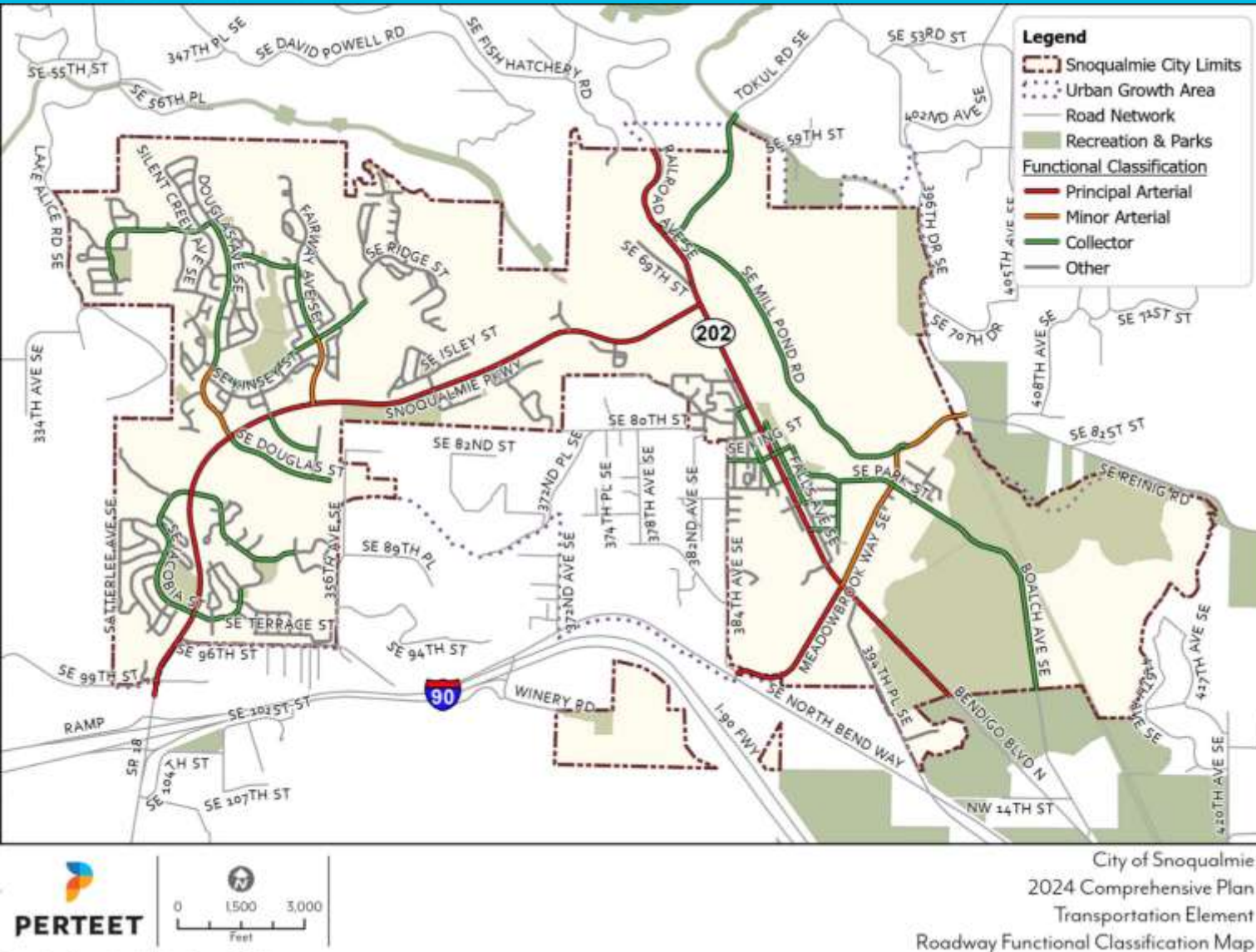
The City of Snoqualmie Comprehensive Plan Transportation Element – **Goals & Policies**



Approach similar to Land Use/Housing Elements:

- Remove duplicative policies
- Consolidate policies where possible to improve clarity
- Revise policies to update with new information, relevancy
- Identify new policy language consistent with VISION 2050 and/or changes to GMA
 - Use PSRC and Commerce provided Consistency Checklists
- Present first draft policies at Planning Commission October 16th meeting

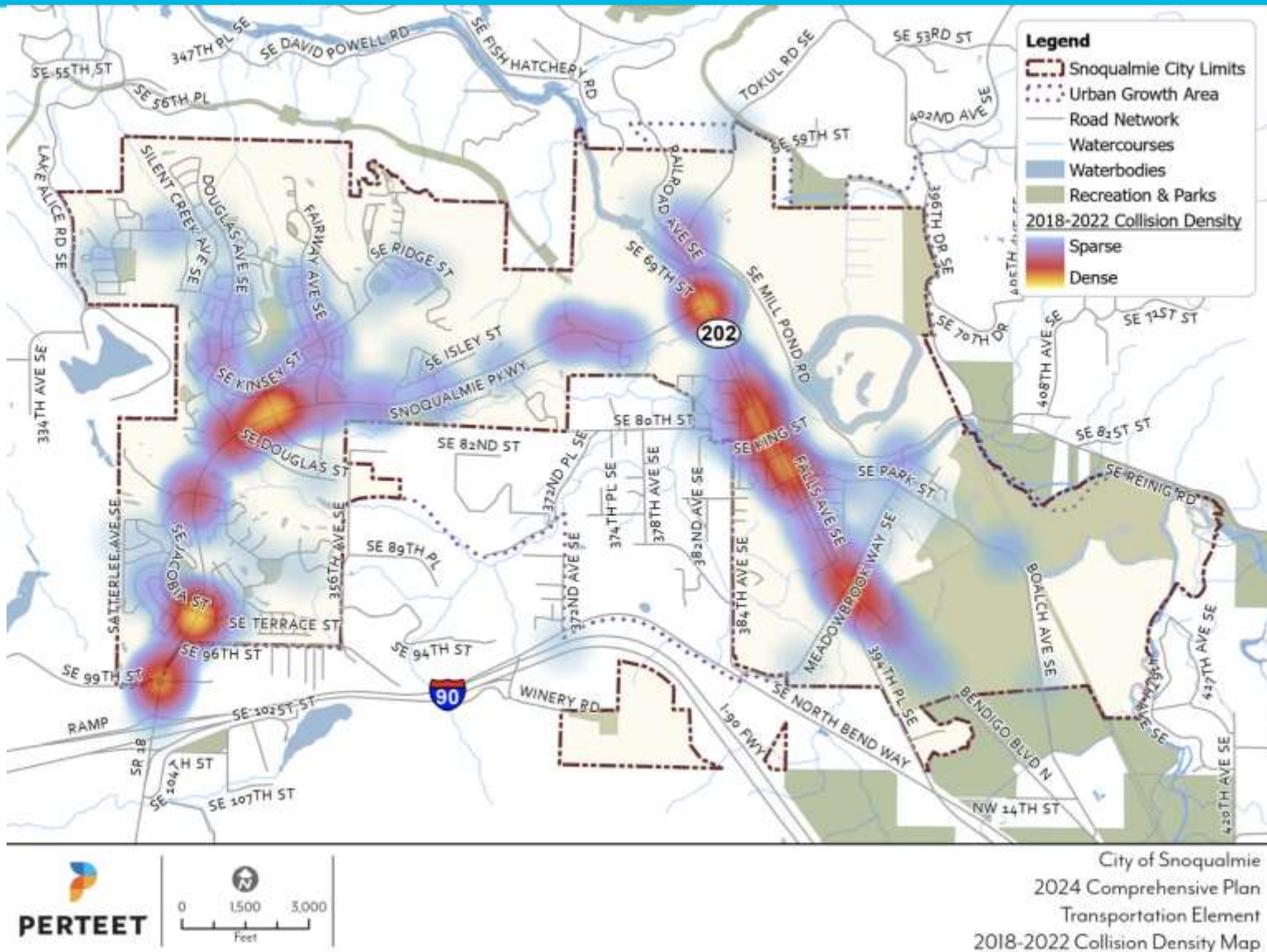
The City of Snoqualmie Comprehensive Plan Transportation Element – Inventory



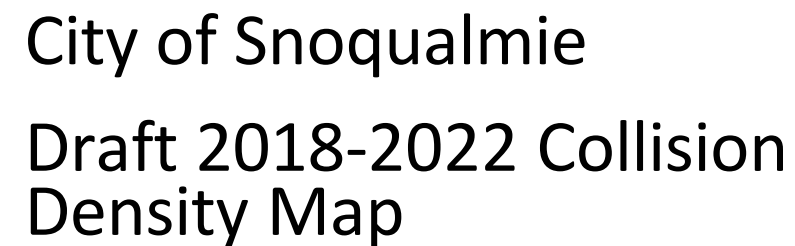
City of Snoqualmie

Draft Roadway Functional
Classification Map

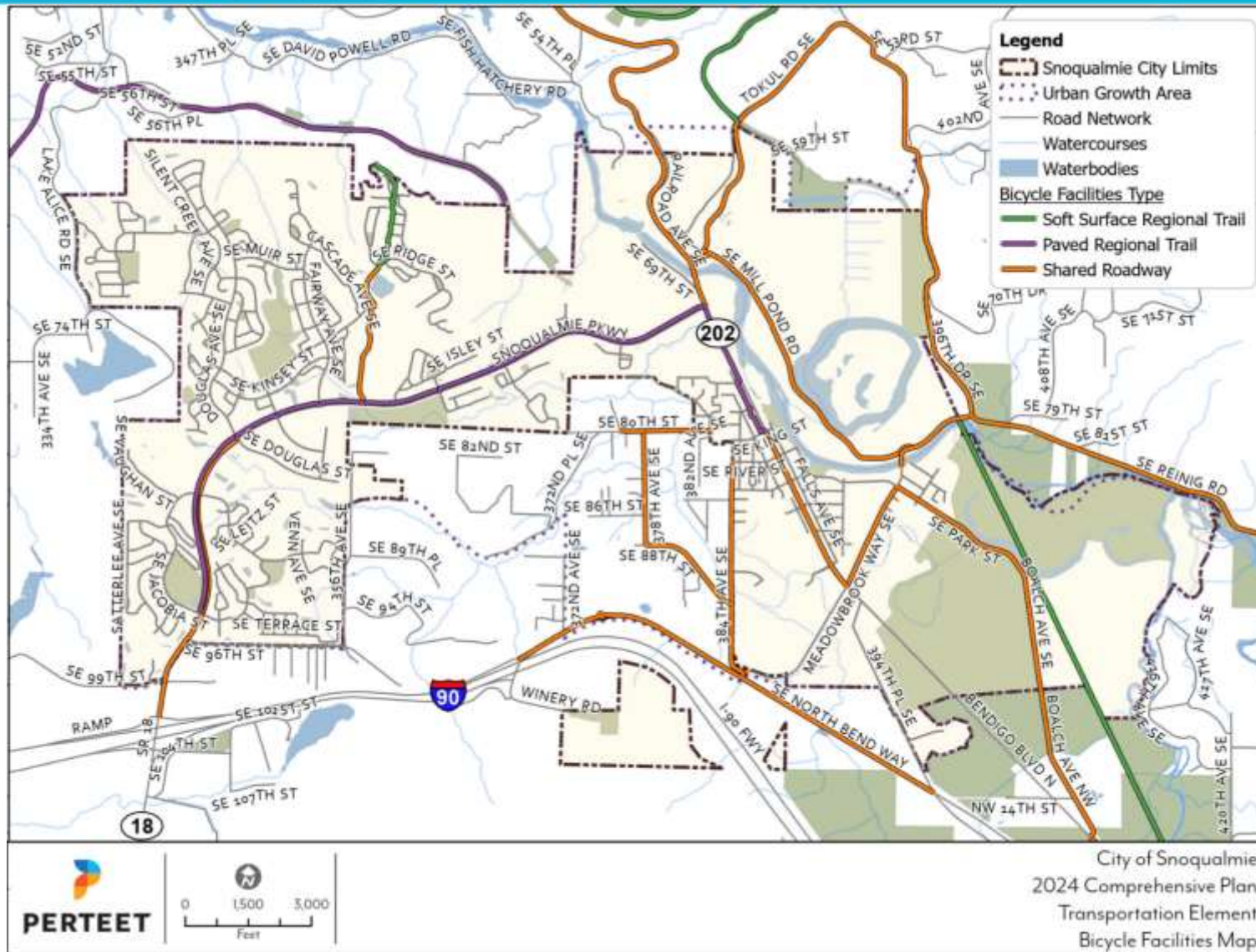
The City of Snoqualmie Comprehensive Plan Transportation Element – Inventory



City of Snoqualmie
Draft 2018-2022 Collision
Density Map



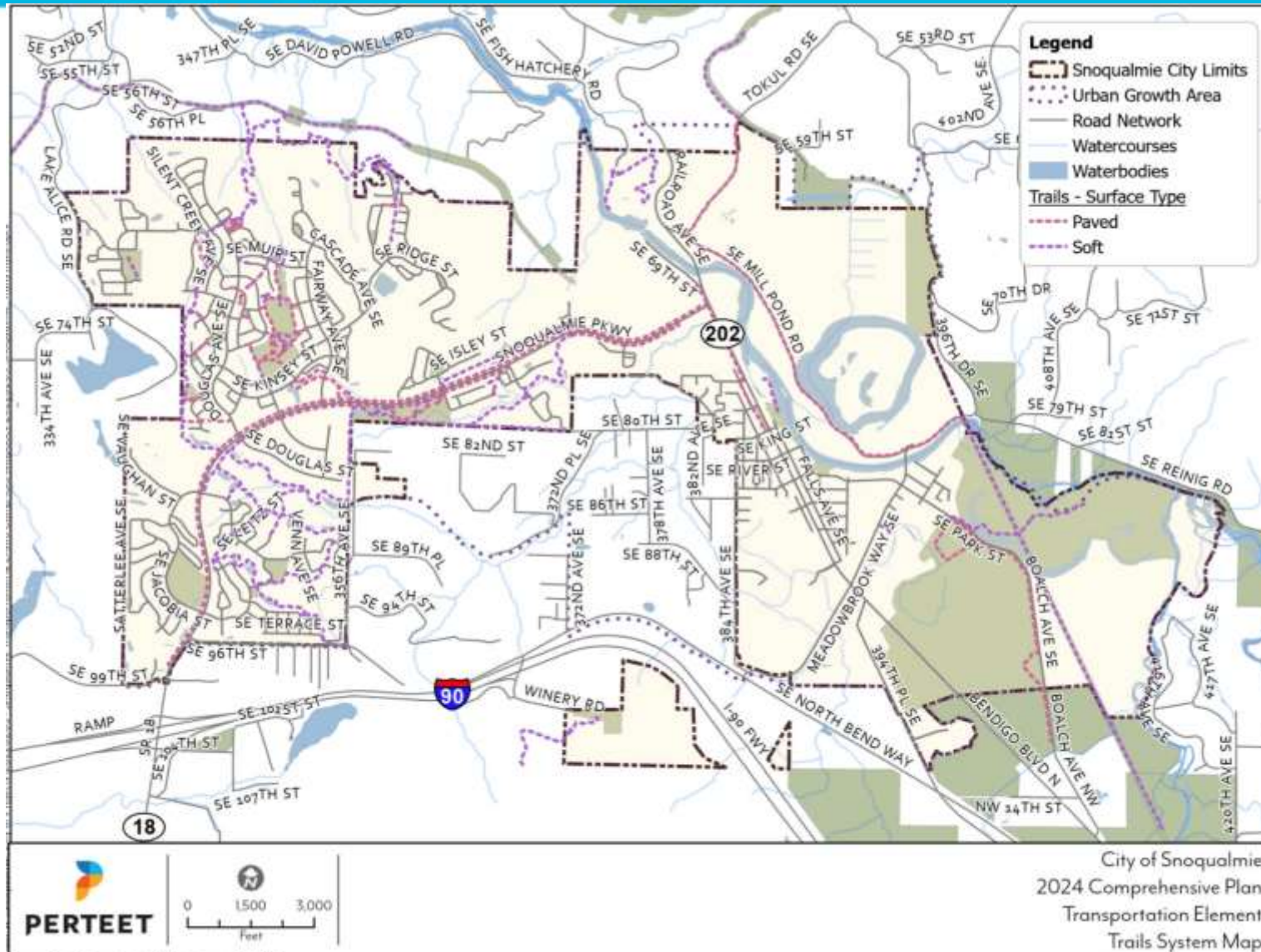
The City of Snoqualmie Comprehensive Plan Transportation Element – Inventory



City of Snoqualmie
Draft Bicycle Facilities Map



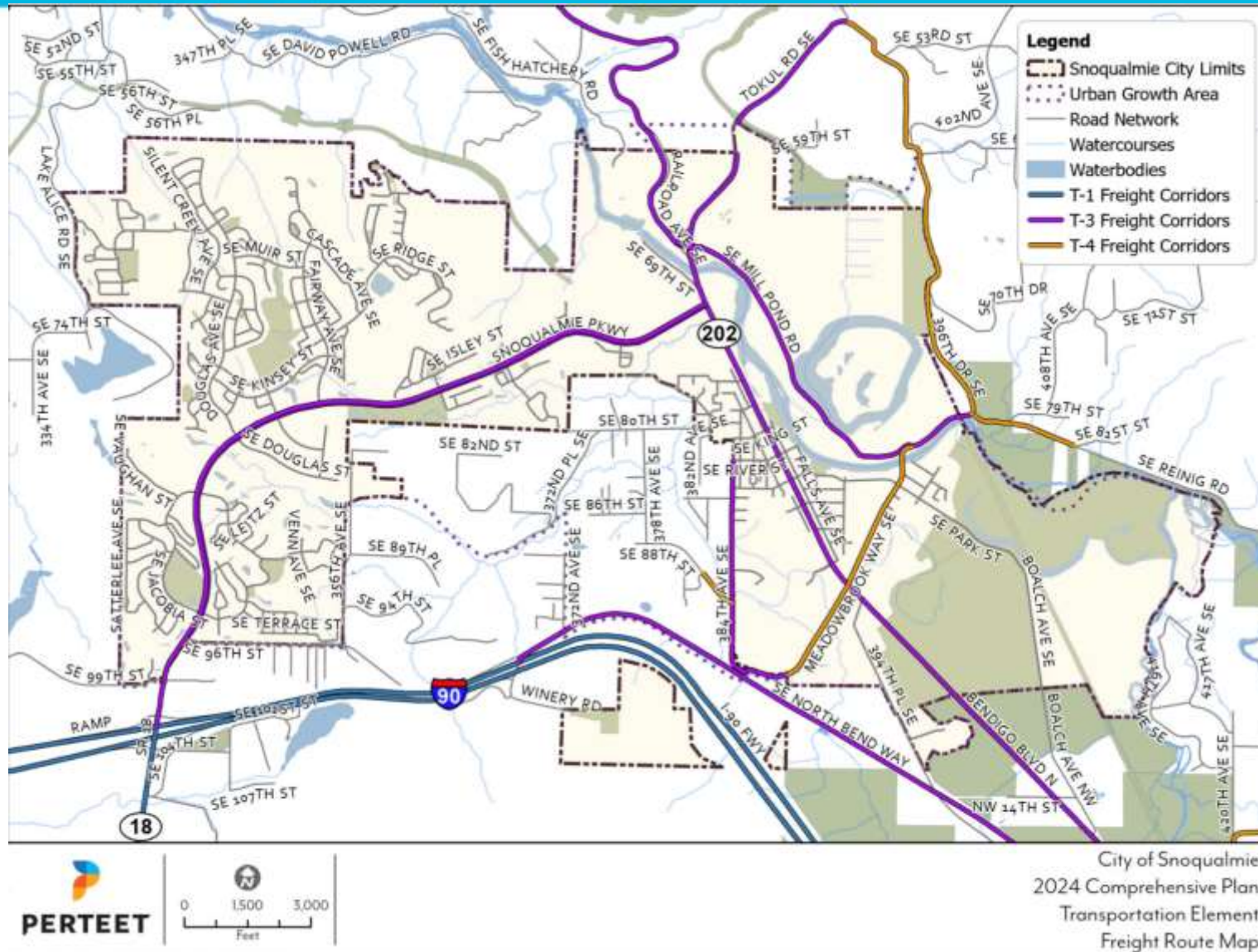
The City of Snoqualmie Comprehensive Plan Transportation Element – Inventory



City of Snoqualmie
Draft Trail Map



The City of Snoqualmie Comprehensive Plan Transportation Element – Inventory



City of Snoqualmie
Draft Freight Route Map

The City of Snoqualmie Comprehensive Plan

Transportation Element – LOS Review



- Traffic counts at 15 intersections and 10 roadway sections occurred September 26-October 1.
- The traffic counts help us determine the Level of Service (LOS) at the intersections, which also inform the LOS of roadways. These analyses will occur Oct-Dec 2023.

Level of Service	General Description
A	Highly stable, free flow conditions
B	Stale, free-flow with little congestion
C	Free-flow with moderation congestions
D	Approaching unstable flow with increasing congestion
E	Unstable, congested conditions
F	Highly congested

The City of Snoqualmie Comprehensive Plan

Transportation Element – Forecast



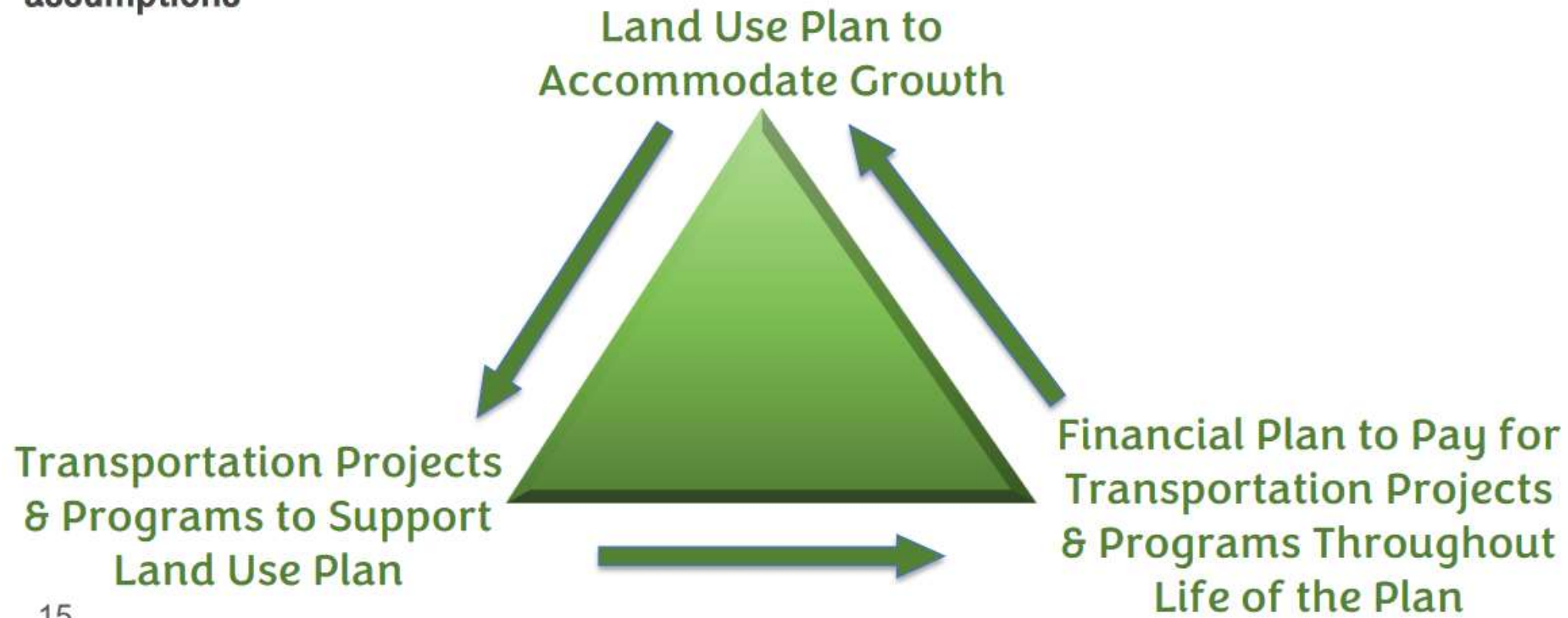
- The Growth Management Act (GMA) requires that the City review how future land use growth could impact the City's transportation network using population and employment growth targets and zoning (existing and/or any zoning/density changes).
- The forecast section will present future intersection LOS results (based on growth projections), from which needed transportation system improvements will be identified.

The City of Snoqualmie Comprehensive Plan

Transportation Element – Land Use + Transportation



Develop clear, financially sound, and regionally-consistent project list and financial assumptions



The City of Snoqualmie Comprehensive Plan

Transportation Element – Future Transportation System Needs



- GMA requires that actions be taken to address any facilities that do not meet adopted LOS standards, the Future Transportation System Needs section will identify transportation projects needed to accommodate the future growth's impact on the City's transportation system.
- A Future Transportation System Map, future intersection LOS, recommendations and a list of needed projects for all modes will be identified based on LOS, safety, capacity needs or other criteria.
 - Pedestrian and Bicycle facilities are now required to be evaluated
- The Transportation System Needs List under GMA is intended to ensure adequate transportation facilities are planned that accommodates growth. All GMA projects will be on the 6-year TIP, but there will be some projects on the TIP that may not be in the GMA list. These are usually maintenance projects and not capacity-increasing projects.

The City of Snoqualmie Comprehensive Plan

Transportation Element – Financing



- GMA requires that Transportation Elements contain a multiyear financing plan, showing the City's ability to fund existing and future transportation system improvements.
- The Financing section should identify anticipated project costs and relate them to existing and future funding sources, such as new local taxes, impact fees, state or federal gas tax monies or grants.
- The Element will include the transportation improvements anticipated in the next 20 years, with projected near-, medium- and long-term timelines, and potential funding sources.
- The City currently funds transportation improvements, operations and maintenance from a variety of funding sources, including local taxes, fees, state and federal grants. WSDOT and King County fund some improvements through Snoqualmie or adjacent to the City.

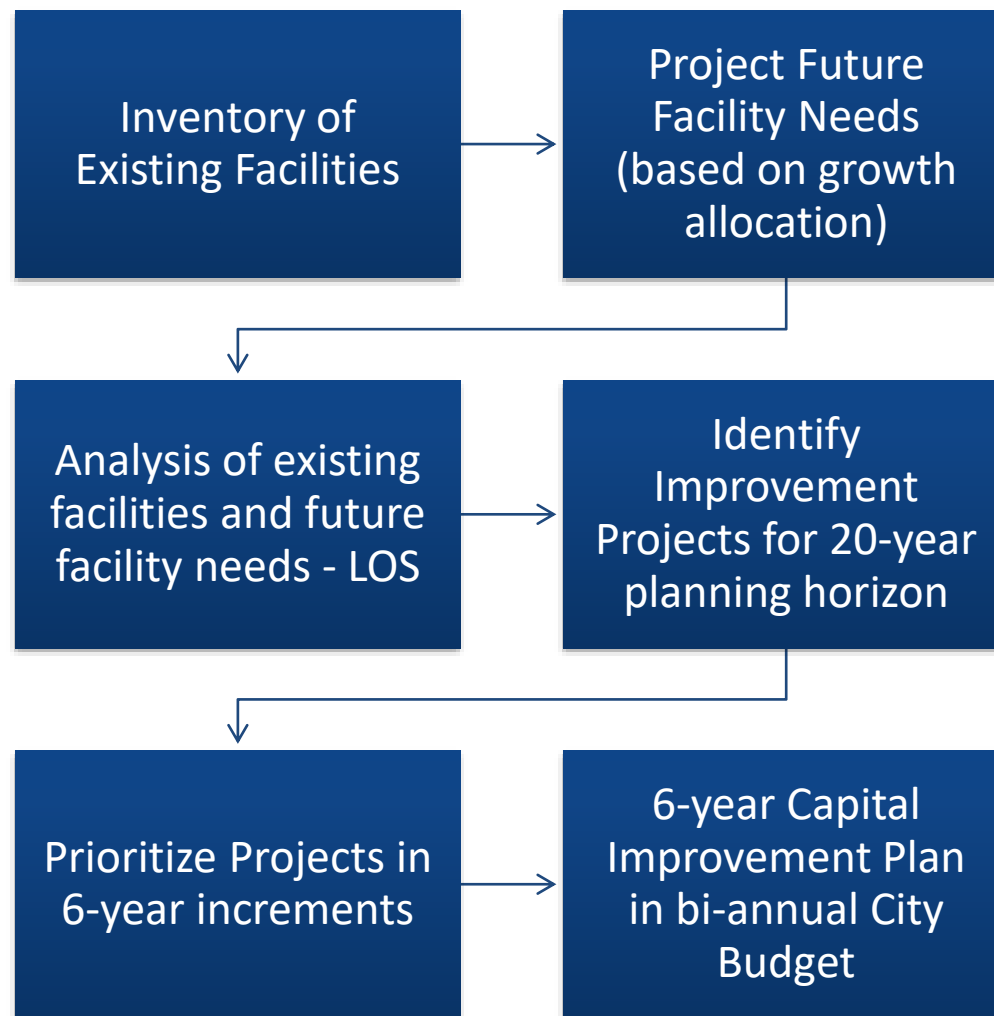
The City of Snoqualmie Comprehensive Plan

Transportation Element – Financing



- The following sources are available for transportation improvements:
 - City General Fund
 - Distributions from gas tax
 - Developer contributions and mitigation fees
 - Federal and State Grants
 - Bond financing
 - Contributions from local/regional jurisdictions
 - Transportation Benefit District financing
 - Impact Fees

The City of Snoqualmie Comprehensive Plan Transportation Element – Summary



The City of Snoqualmie Comprehensive Plan Transportation Element – Upcoming



➤ Transportation Element Development:

- Goals and Policies presented to Planning Commission **October 16th**
- Complete Inventory – **Oct-Nov 2023**
- Use traffic counts to begin LOS analyses – **Oct-Dec 2023**
- Identify transportation system needs based on LOS analyses and growth target/land use – **Jan-Feb 2024**
- Develop future transportation system map and project list – **Feb 2024**
- Identify funding sources – **Feb 2024**
- Complete Transportation Element and present to Planning Commission – **March 2024**

Questions and Discussion



Thank you!

