

# King St, Snoqualmie Parkway Crossing Improvements

---

Project Update



# What Improvements Are Being Made?

---

- **King Street**

- New sidewalk for safer pedestrian access.
- Installation of new safety signage at the crossing
- New concrete crossing surface.
- City to upgrade existing water main under railroad tracks

- **Snoqualmie Parkway**

- Widen sidewalk.
- New concrete crossing surface.
- Remove existing signals and install cantilever structure.
- Upgrade train detection system.
- Convert signal lighting to LED.
- Install trespass-mitigation gate on the east side.



# Schedule, Cost & Funding

---

- **Schedule**
  - Project currently at 90% design
  - Construction anticipated: **May 2026**  
– **August 2026**
- **Cost**
  - Anticipated Construction Cost:
    - \$3.0M to \$3.5M
- **Funding**
  - FHWA Safety 130 Grant: **\$2,073,000**
  - **No local match required** if construction is authorized before **September 2026**





# What to Expect During Construction

---

- King Street
  - Temporary **full closure** between SR 202 / Railroad Avenue and Maple Avenue
  - Expected duration: **7-14 days**
- Snoqualmie Parkway
  - **One 3-day weekend full closure** (Thursday 7:00 pm - 5:00am Monday)
  - Additional midweek **single-lane closures** during construction
  - State holidays will be avoided



# Why Are Full Closures Needed?

---

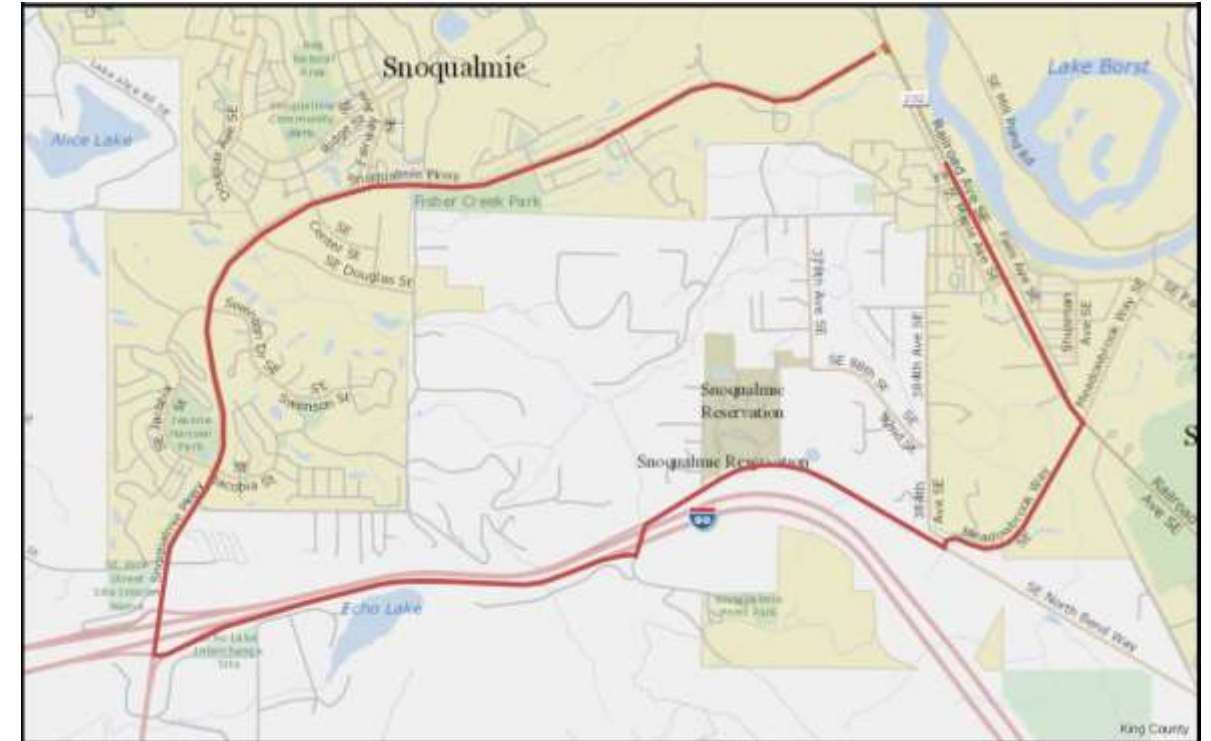
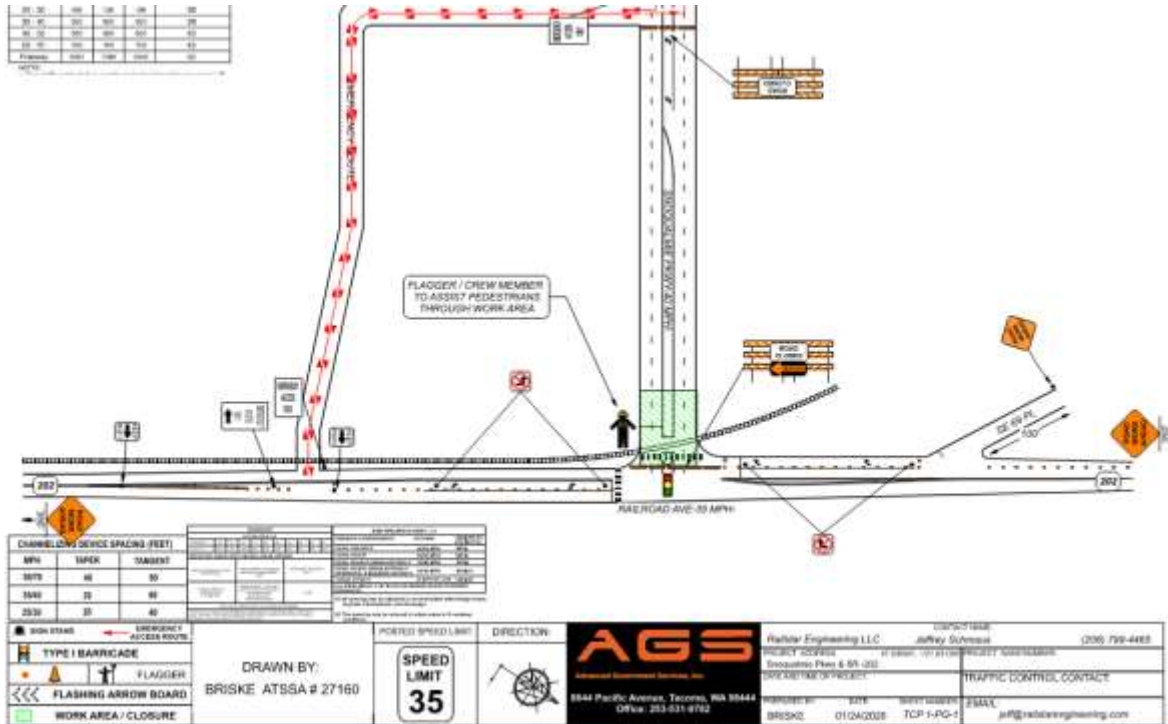
Full closure allow the project to:

- Properly align railroad tracks and crossing surfaces
- Reduce conflicts between traffic and construction equipment
- Improve safety for the public and construction crews
- Shorten overall construction time

## **If Partial Closures Were Used**

- Estimated additional 7 workdays of construction impacting commutes
- Estimated added cost: **\$30,000 per day**
- One day of full closure would still be required for threading rail and resetting panels
- Failure to fully close the road presents a high risk of track misalignment.

# Draft Traffic Control Plan Snoqualmie Parkway



# Questions?

