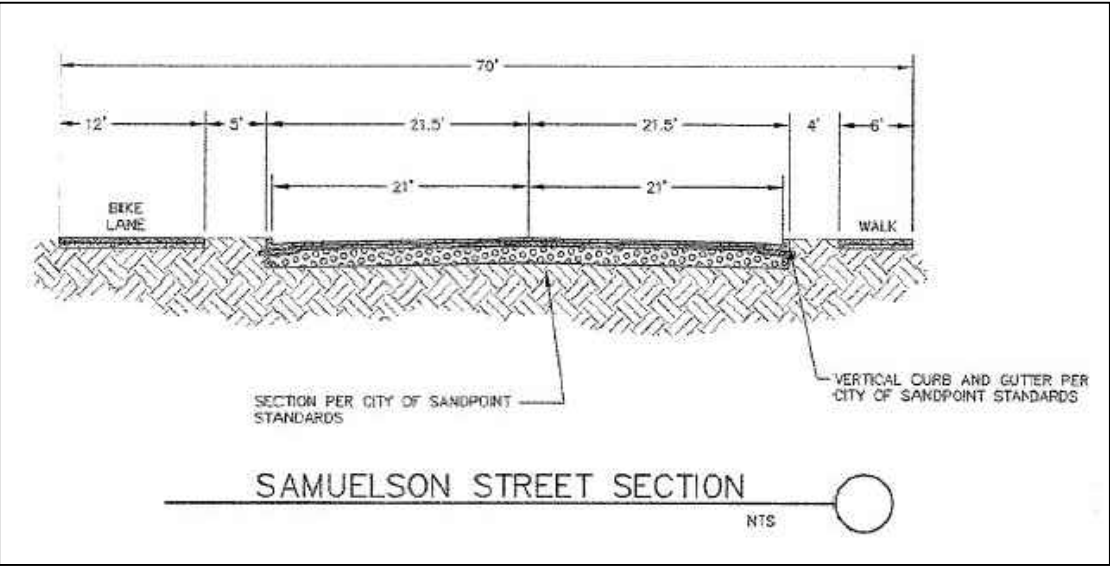
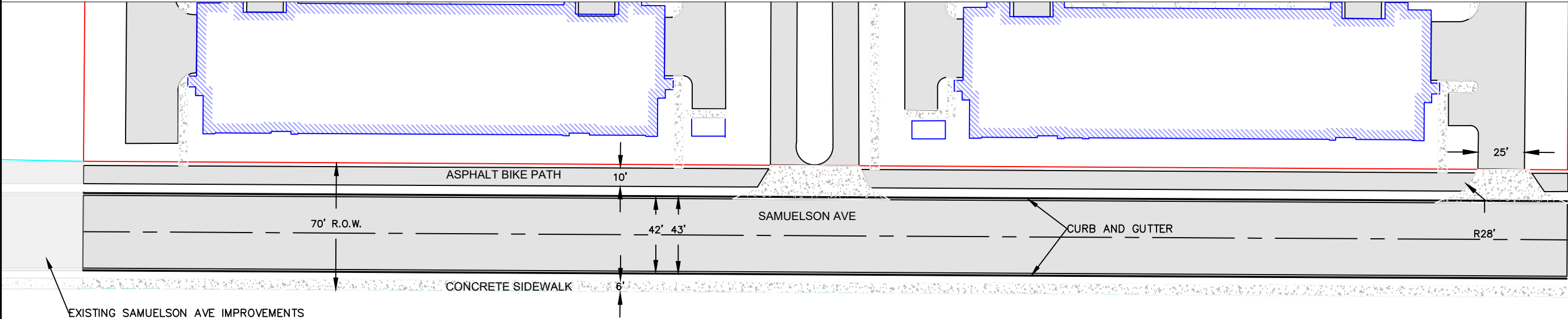


NOTES:
1. NORTHERN SITE APPROACH SHOWN AS FIRE APPARATUS ACCESS ROAD TURNAROUND PER FIGURE D103.1 OF THE 2018 IFC AS ADOPTED BY THE CITY OF SANDPOINT AND THE IDAHO STATE FIRE MARSHAL



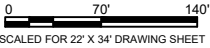
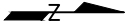
PRELIMINARY
NOT FOR
CONSTRUCTION

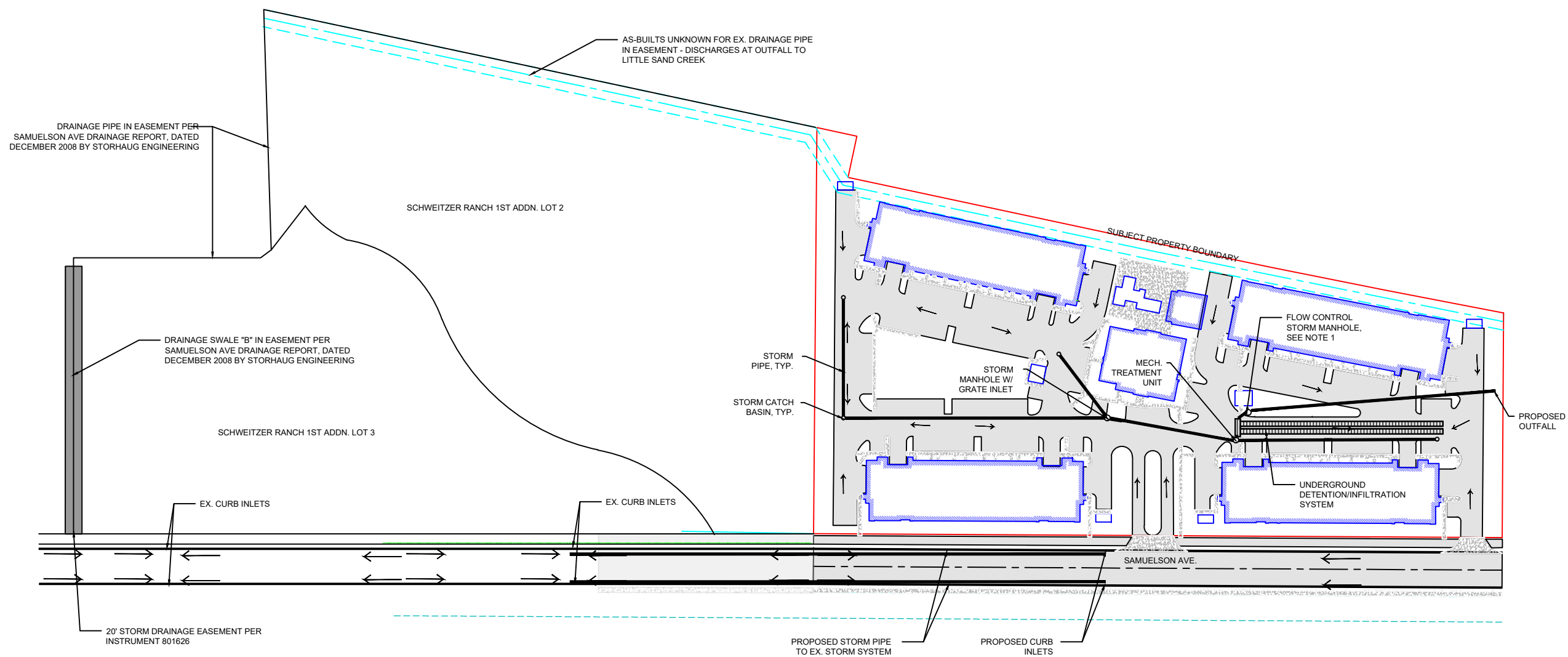
PROJ. NO.	REVISION
CW186.1	
DWN. BY	DATE
NMC	
DATE	BY
12/20/2024	
SHEET	1 OF 1
DWG. NO.	C-1

SAMUELSON
APARTMENTS
CONCEPTUAL SAMUELSON
ROAD EXTENSION

Clearwater Engineering, LLC

P.O. Box 2006
Post Falls, ID 83877
Phone: 406.690.5249
clearwatereng.idaho@gmail.com





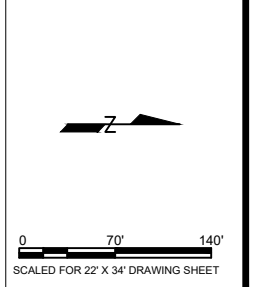
NOTES:
1. STORM MANHOLE SHALL CONTAIN INTERNAL FLOW CONTROL WEIR AND ORIFICE TO DISCHARGE OFF-SITE AT THE PRE-DEVELOPMENT RUNOFF RATE

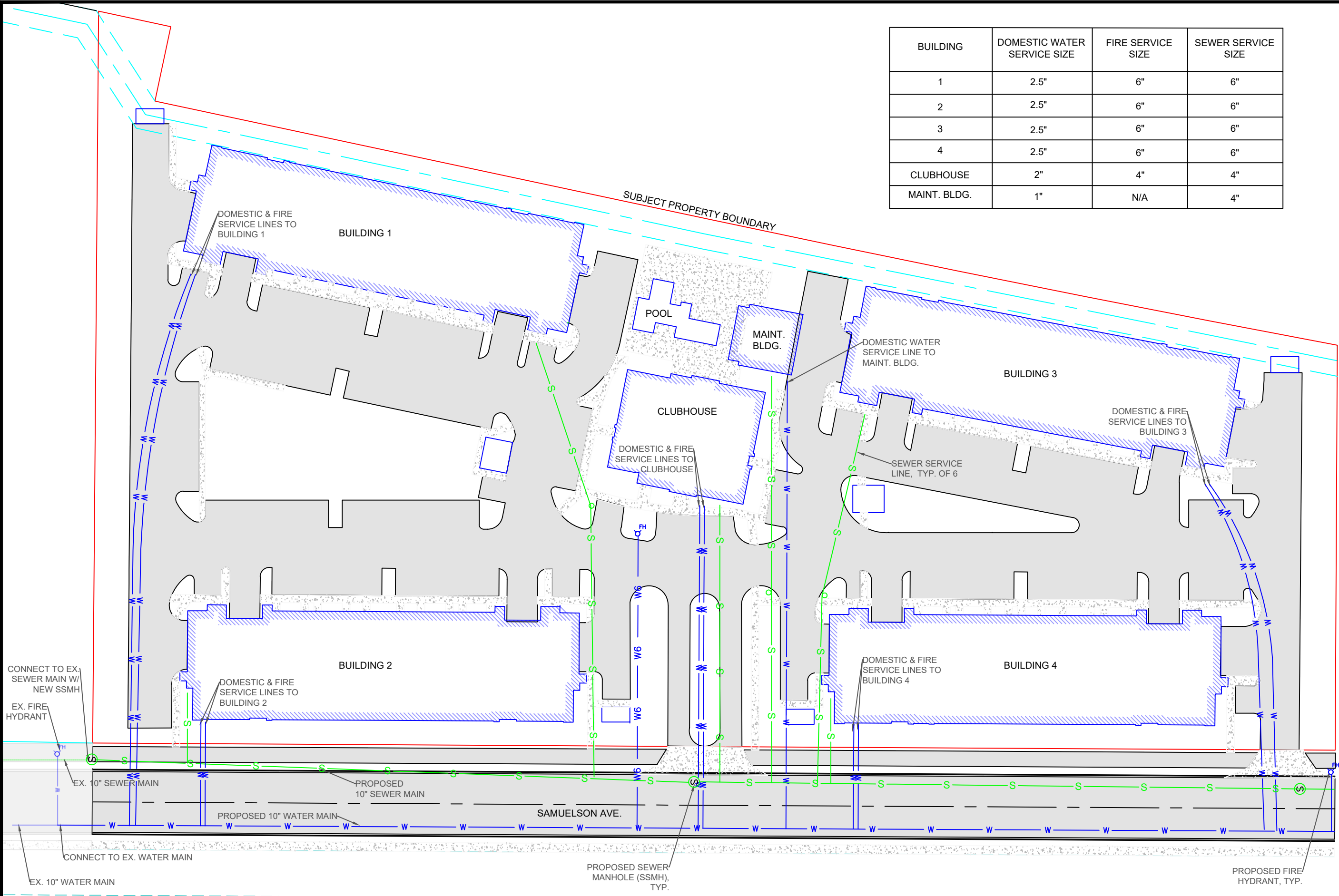
PRELIMINARY
NOT FOR
CONSTRUCTION

PROJ. NO.	REVISION
CW186.1	
DWN. BY	DATE:
NMC	
DATE	BY:
12/30/2024	
SHEET	
1 OF 1	
DWG. NO.	
C-1	

SAMUELSON
APARTMENTS
CONCEPTUAL STORMWATER
PLAN

Clearwater Engineering, LLC
P.O. Box 2006
Post Falls, ID 83877
Phone: 406.690.5249
clearwatereng.idaho@gmail.com





BUILDING	DOMESTIC WATER SERVICE SIZE	FIRE SERVICE SIZE	SEWER SERVICE SIZE
1	2.5"	6"	6"
2	2.5"	6"	6"
3	2.5"	6"	6"
4	2.5"	6"	6"
CLUBHOUSE	2"	4"	4"
MAINT. BLDG.	1"	N/A	4"

PRELIMINARY
NOT FOR
CONSTRUCTION

PROJ. NO.	REVISION
CW186.1	
DWN. BY	DATE
NMC	
DATE	BY
12/30/24	

SHEET

1 OF 1

DWG. NO.

C-1

SAMUELSON
APARTMENTS

CONCEPTUAL UTILITY LAYOUT

Clearwater Engineering, LLC

P.O. Box 2006
Post Falls, ID 83877
Phone: 406.690.5249
clearwatereng.idaho@gmail.com

030'60'

SCALED FOR 22" X 34" DRAWING SHEET

Z