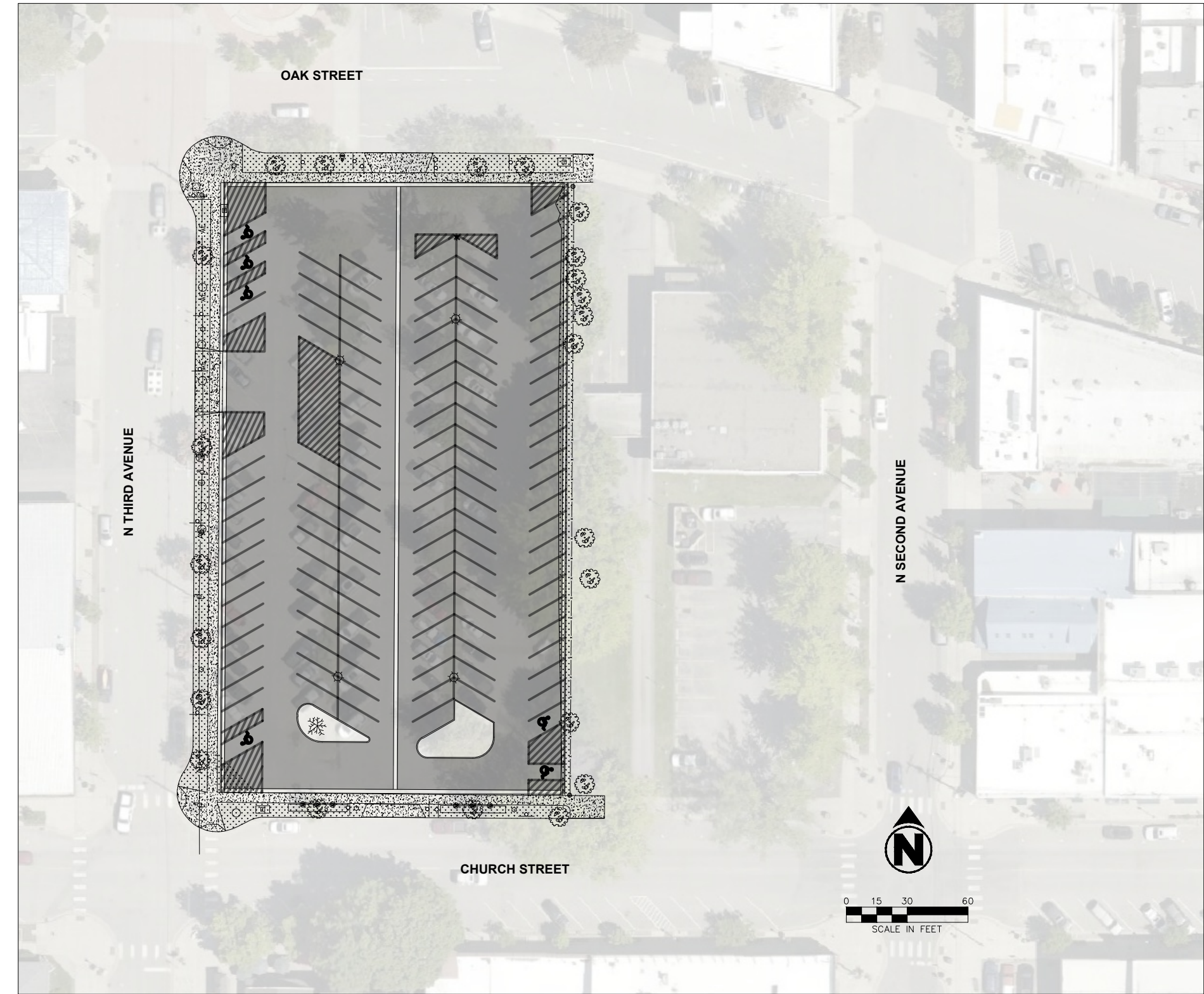


CITY PARKING LOT IMPROVEMENTS 2025

218 CHURCH STREET, SANDPOINT, IDAHO



OVERALL SITE PLAN

GENERAL NOTES:

- ALL WORK SHALL CONFORM TO THE IDAHO STANDARDS FOR PUBLIC WORKS CONSTRUCTION (2020), SANDPOINT CITY CODE, AND THE PROJECT SPECIFICATIONS.
- CONTRACTOR TO FIELD VERIFY THE LOCATION OF ALL EXISTING SITE ELEMENTS SHOWN ON THESE PLANS, INCLUDING UTILITIES, SURFACE FEATURES, AND TOPOGRAPHY, AND NOTIFY THE ENGINEER OF ANY DISCREPANCIES BEFORE BEGINNING WORK.
- IN NO CASE SHALL RUNOFF BE DIRECTED FROM THE PROPOSED PROJECT ONTO A NEIGHBORING LOT, UNLESS IT IS SPECIFICALLY DESIGNATED FOR SUCH A PURPOSE.

LEGEND:

- | | | | |
|-----|---------|-----|------------------------------|
| --- | 2056 | --- | EXISTING CONTOUR |
| --- | 2056 | --- | PROPOSED CONTOUR |
| --- | | --- | PROPERTY LINE |
| --- | | ● | FOUND SURVEY MONUMENT/MARKER |
| --- | | ○ | SILT FENCE |
| --- | 2079.10 | × | FINISHED GRADE ELEVATION |
| --- | CONC | --- | FINISHED GRADE SLOPE |
| --- | 1.6% | --- | |
| --- | | --- | CONCRETE |
| --- | | --- | GRAVEL |
| --- | | --- | ASPHALT |
| --- | | --- | CURB AND GUTTER |
| --- | | --- | TREE |
| --- | | --- | SIGN |
| --- | X | --- | FENCE |
| --- | W | --- | WATER MAIN |
| --- | WS | --- | WATER SERVICE |
| --- | WM | --- | WATER METER |
| --- | ⊗ | --- | VALVE |
| --- | ⊗ | --- | HYDRANT |
| --- | W | --- | WELL |
| --- | S | --- | SANITARY SEWER MAIN |
| --- | SS | --- | SANITARY SEWER SERVICE |
| --- | Ⓢ | --- | SEWER MANHOLE |
| --- | CO | --- | CLEAN OUT |
| --- | SD | --- | STORM DRAIN PIPE |
| --- | --- | --- | CULVERT |
| --- | --- | --- | STORM INLET (GRADED LID) |
| --- | --- | --- | STORM MANHOLE (SOLID LID) |
| --- | BE | --- | BURIED ELECTRIC |
| --- | AE | --- | AERIAL ELECTRIC |
| --- | E | --- | ELECTRICAL BOX |
| --- | --- | --- | UTILITY POLE |
| --- | --- | --- | LIGHT POLE |
| --- | --- | --- | GUY WIRE |
| --- | G | --- | GAS |
| --- | G | --- | GAS METER |
| --- | T | --- | TELEPHONE |
| --- | T | --- | TELEPHONE PEDESTAL |
| --- | DRY | --- | DRY UTILITY TRENCH |
| --- | CBL | --- | CABLE |

50% DESIGN
PRELIMINARY
NOT FOR CONSTRUCTION

DATE	REVISION



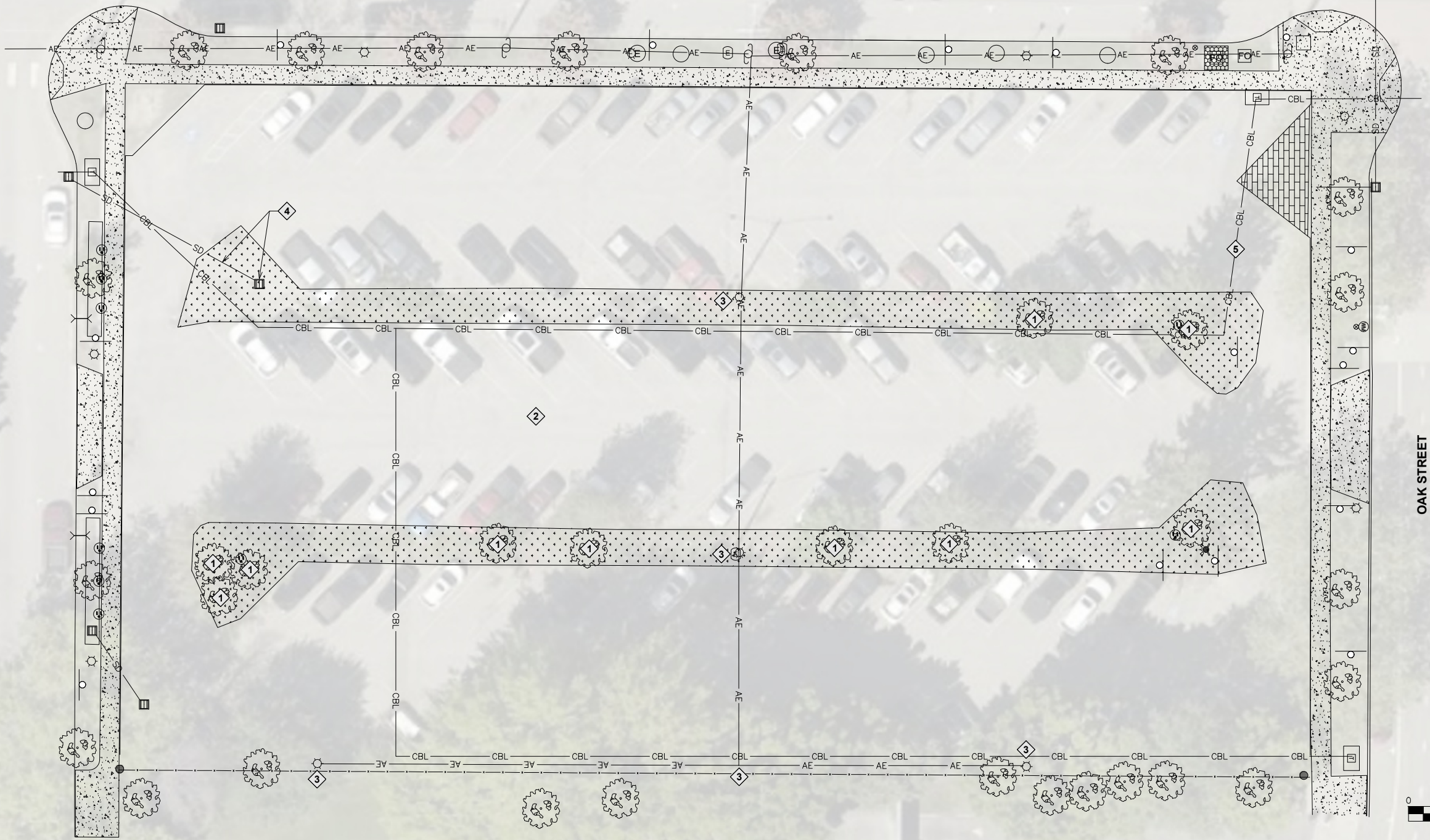
CITY PARKING LOT IMPROVEMENTS
218 CHURCH STREET
SANDPOINT, IDAHO

DATE: 2/5/2025

COVER
SHEET

SHEET: 1 OF 5

NORTH THIRD AVENUE



OAK STREET



50% DESIGN
PRELIMINARY
NOT FOR CONSTRUCTION

DATE	REVISION



CITY PARKING LOT IMPROVEMENTS
218 CHURCH STREET
SANDPOINT, IDAHO

DATE: 2/5/2025

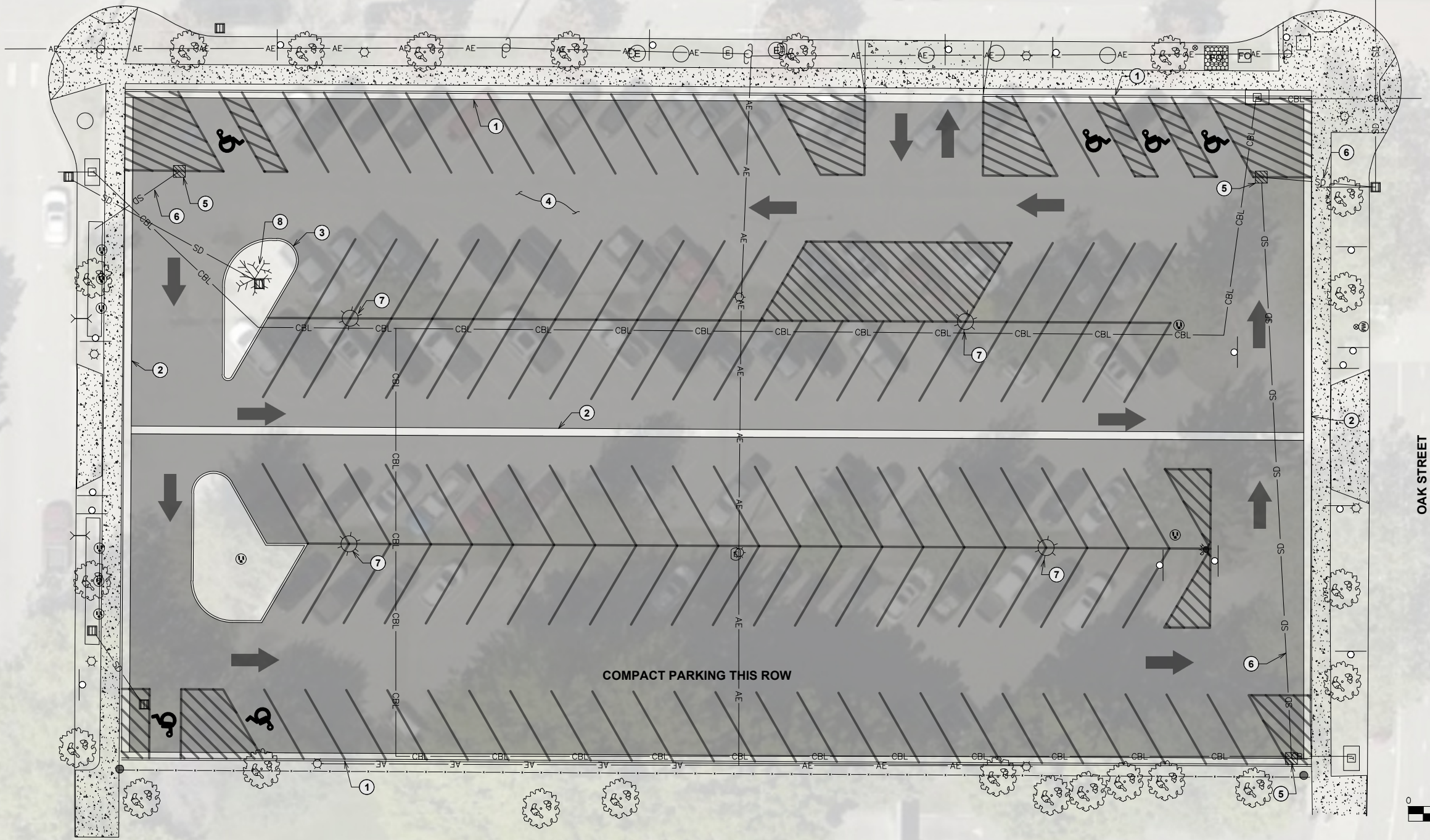
EXISTING
CONDITIONS
AND
DEMOLITION
PLAN

SHEET: 2 OF 5

DEMO NOTES

- 1 REMOVE TREE
- 2 REMOVE ASPHALT
- 3 REMOVE LIGHT POLE
- 4 REMOVE STORM INLET AND PIPE
- 5 RELOCATE BURIED FIBER

NORTH THIRD AVENUE



OAK STREET



COMPACT PARKING THIS ROW

KEYED NOTES

- 1 INSTALL CONCRETE CURB AND GUTTER
- 2 INSTALL CONCRETE COVE GUTTER
- 3 INSTALL CONCRETE VERTICAL CURB
- 4 INSTALL ASPHALT SECTION
- 5 INSTALL STORM CATCH BASIN
- 6 INSTALL 6" PVC SCH 40 STORM PIPE
- 7 INSTALL LED STREET LIGHT
- 8 INSTALL TREE

50% DESIGN
PRELIMINARY
NOT FOR CONSTRUCTION

DATE	REVISION



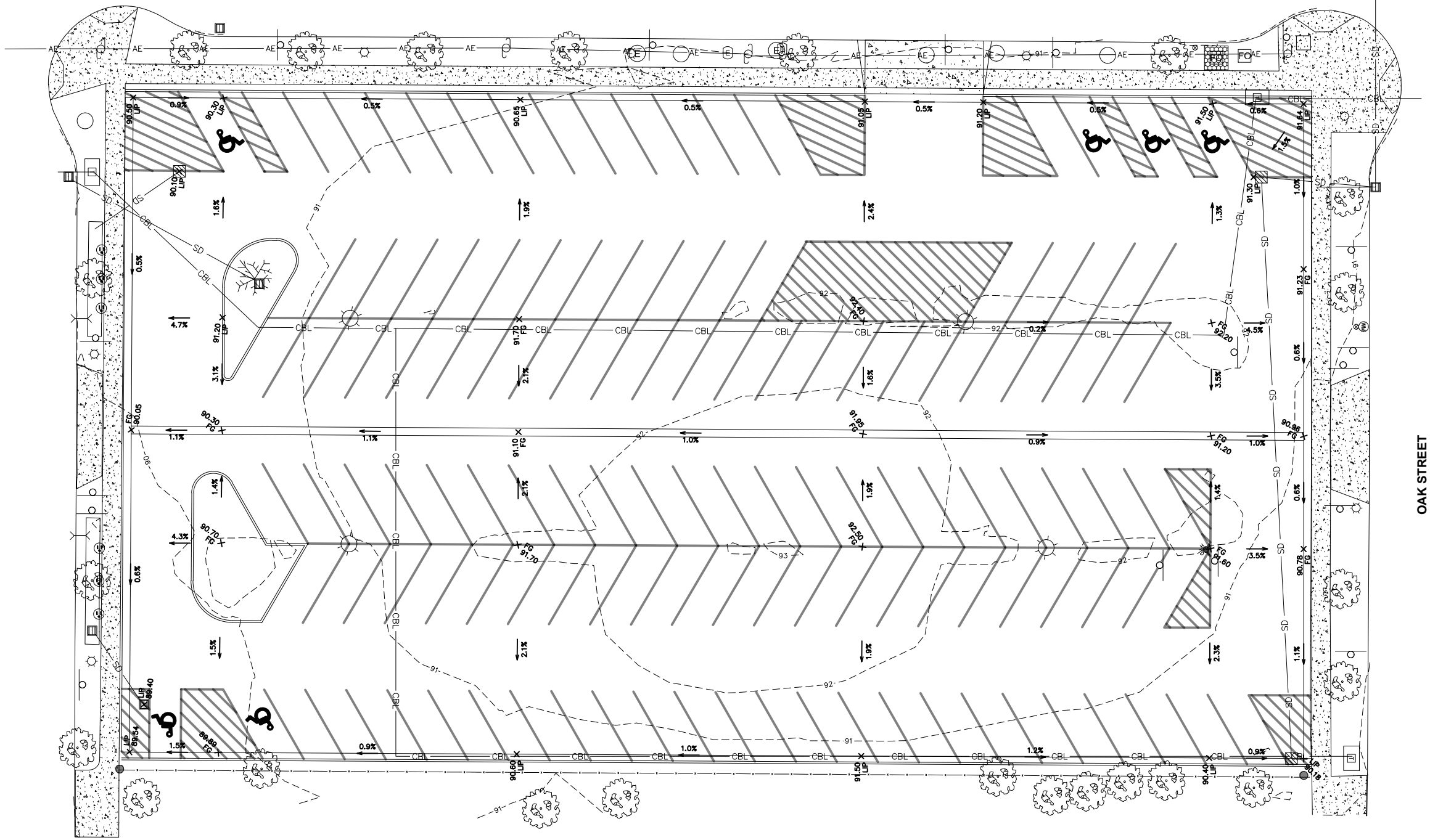
CITY PARKING LOT IMPROVEMENTS
218 CHURCH STREET
SANDPOINT, IDAHO

DATE:

SITE PLAN

SHEET: 3 OF 5

NORTH THIRD AVENUE



OAK STREET



ABBREVIATIONS:
TBC = TOP BACK OF CURB
SWALE = SWALE INVERT
CONC = CONCRETE
FG = FINISHED GRADE
TW = TOP OF WALL
BW = BOTTOM OF WALL
MATCH = MATCH EXISTING

50% DESIGN
PRELIMINARY
NOT FOR CONSTRUCTION

DATE	REVISION



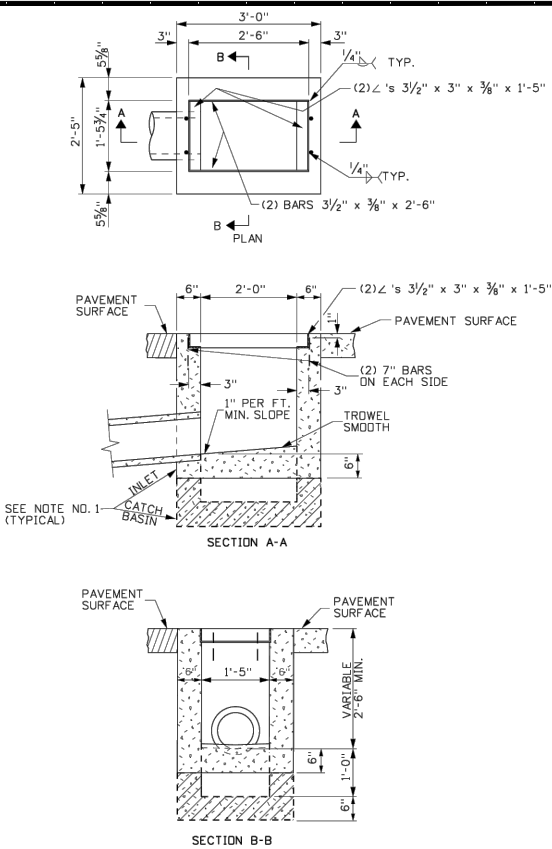
CITY PARKING LOT IMPROVEMENTS
218 CHURCH STREET
SANDPOINT, IDAHO

DATE:

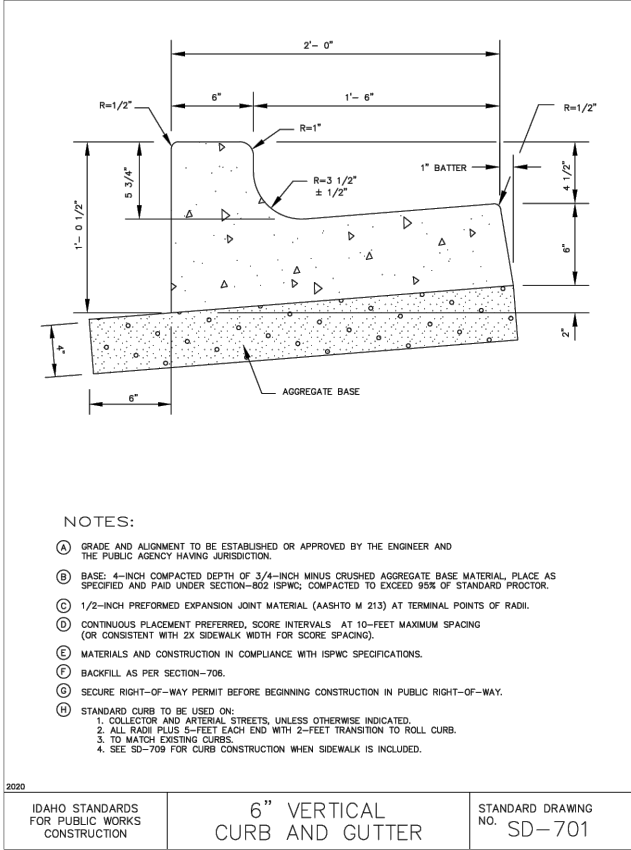
GRADING
PLAN

SHEET: 4 OF 5

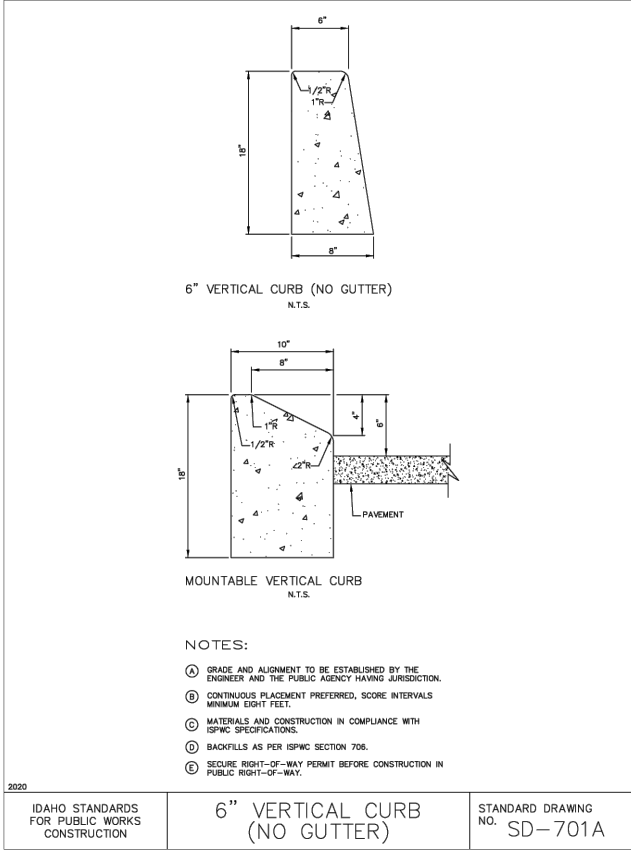
CATCH BASIN
NOT TO SCALE



CURB AND GUTTER
NOT TO SCALE



VERTICAL CURB
NOT TO SCALE



50% DESIGN
PRELIMINARY
NOT FOR CONSTRUCTION

DATE	REVISION



CITY PARKING LOT IMPROVEMENTS
218 CHURCH STREET
SANDPOINT, IDAHO

DATE: 2/3/2025

DETAILS

SHEET: **5** OF **5**