

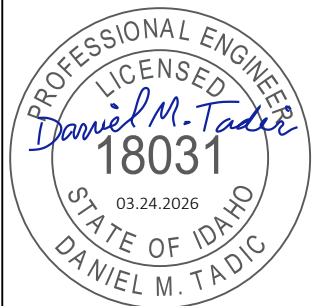
DIVISION AVE. CORRIDOR IMPROVEMENTS PHASE 2

CITY OF SANDPOINT

SANDPOINT, IDAHO

MARCH 2026

DIVISION AVE. CORRIDOR
 IMPROVEMENTS PHASE 2
 CITY OF SANDPOINT, IDAHO
 BONNER COUNTY
 COVER SHEET



CONSTRUCTION DRAWINGS

1"
SCALE: (11X17 ONLY)

PROJECT NO: GS025-17
 DRAWN BY: C. SMITH
 CHECKED BY: D. TADIC
 DATE: 03.24.2026

© 2026 HMH ENGINEERING

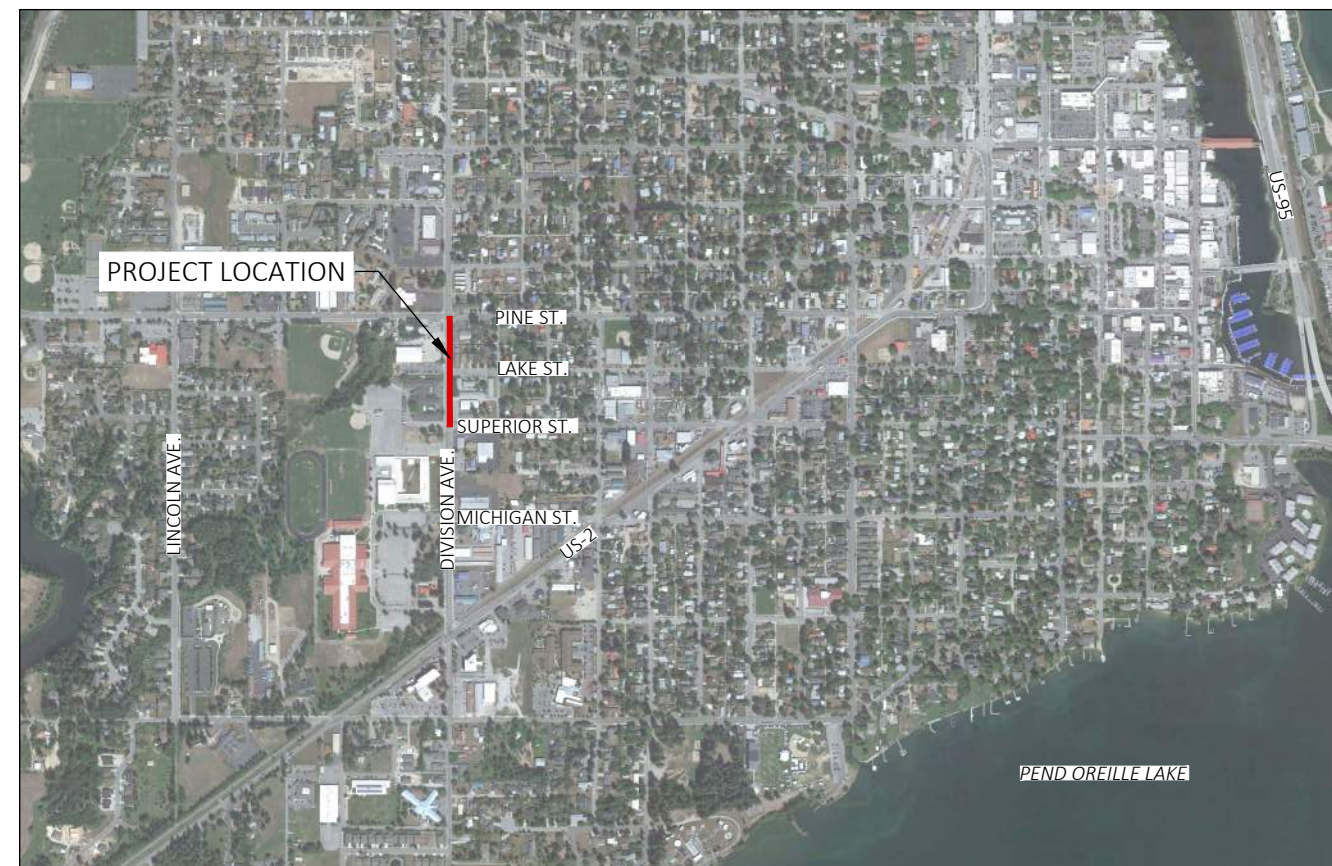
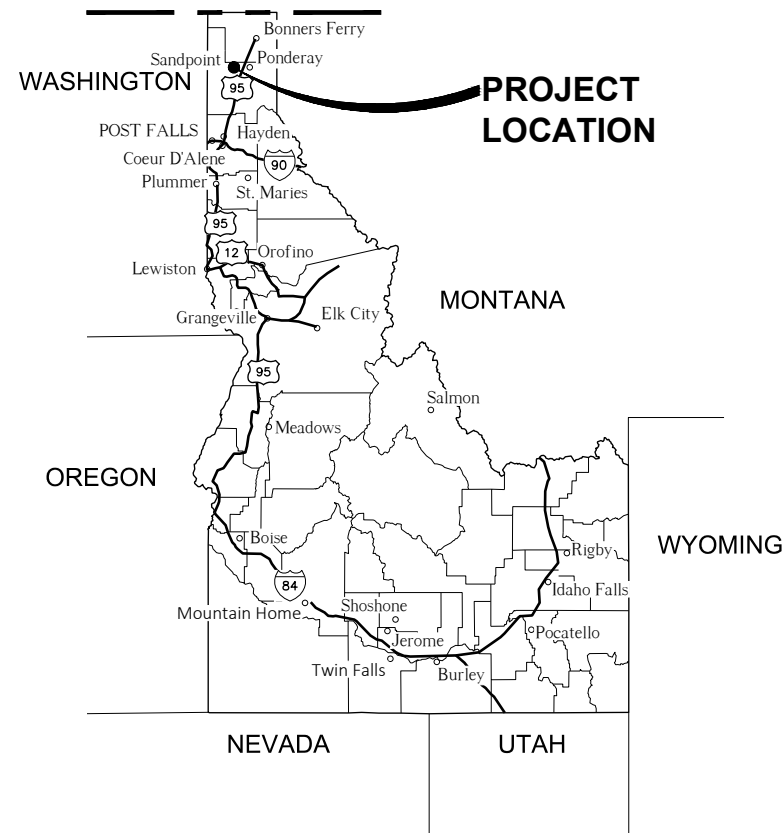
REVISIONS

NO.	DATE	DESCRIPTION

DRAWING:

1

SHEET: 1 OF 13



INDEX OF SHEETS	
SHEET NO.	DESCRIPTION
1	COVER SHEET
2	LEGEND
3	NOTES
4-5	DEMOLITION PLAN
6-7	ROADWAY IMPROVEMENTS PLAN
8-9	PAVEMENT MARKING PLAN
10-13	DETAILS

CONTROL POINT TABLE				
POINT #	NORTHING	EASTING	ELEVATION	DESCRIPTION
94	2409158.896	2425735.925	2097.26	5/8" REBAR WITH RED PLASTIC CAP MARKED "HMH CONTROL"
95	2409128.134	2425793.117	2097.10	5/8" REBAR WITH RED PLASTIC CAP MARKED "HMH CONTROL"
96	2409507.559	2425810.085	2097.10	5/8" REBAR WITH RED PLASTIC CAP MARKED "HMH CONTROL"
97	2409677.486	2425739.532	2098.72	5/8" REBAR WITH RED PLASTIC CAP MARKED "HMH CONTROL"
98	2409913.825	2425836.251	2098.32	5/8" REBAR WITH RED PLASTIC CAP MARKED "HMH CONTROL"
99	2409936.529	2425727.663	2096.63	5/8" REBAR WITH RED PLASTIC CAP MARKED "HMH CONTROL"



VICINITY MAP

SCALE: NTS



PLOT DATE: 3/24/2026 6:47 PM PLOTTED BY: DYLAN JONES
LAYOUT: LEGEND PATH: Z:\DOCUMENTS\PROJECTS\2025\GS025-17\CAD\PLAN SHEETS\IMPROVEMENTS PH 2\CAD\PLAN SHEETS\GS025-17 LEGEND.DWG

SURVEY LEGEND		
PROPOSED	EXISTING	DESCRIPTION
		FOUND ALUMINUM CAP MONUMENT
		FOUND BRASS CAP MONUMENT
		FOUND 1/2" MONUMENT
		FOUND 5/8" MONUMENT
		FOUND 1-1/4" COPPER DISC MONUMENT
		FOUND PIPE
		FOUND CONCRETE MONUMENT
	"X"	FOUND CHISELED "X"
		FOUND MAG NAIL
		FOUND STONE
		FOUND HIGHWAY MONUMENT
		SET 1/2" MONUMENT
		SET 5/8" MONUMENT
		SET ALUMINUM CAP MONUMENT
		SET TEMPORARY BENCH MARK
		SET COPPER DISK
	"X"	SET CHISELED "X"
		CALCULATED POINT, NOTHING FOUND OR SET

DOMESTIC WATER LEGEND		
PROPOSED	EXISTING	DESCRIPTION
		WATER VALVE
		WATER METER
		FIRE HYDRANT
		FIRE DEPARTMENT CONNECTION (FDC)
		FROST FREE HYDRANT/SPIGOT
		WATER MANHOLE
		WELL
		BACK FLOW PREVENTER (BFP)
		POST INDICATOR VALVE
		BLOW OFF
		CURB VALVE

IRRIGATION LEGEND		
PROPOSED	EXISTING	DESCRIPTION
		PRESSURE IRRIGATION VALVE
		IRRIGATION HEAD GATE
		IRRIGATION BOX
		IRRIGATION MANHOLE

SITE LEGEND		
PROPOSED	EXISTING	DESCRIPTION
		AIR CONDITIONING UNIT
		ADA SYMBOL
		BOLLARD
		MAILBOX
		MAILBOX CLUSTER
		PARKING METER
		SIGN
		UNKNOWN MANHOLE

ELECTRICAL LEGEND		
PROPOSED	EXISTING	DESCRIPTION
		POWER POLE
		GUY WIRE
		POWER RISER
		AREA LIGHT
		ELECTRIC MANHOLE
		ELECTRIC RISER
		ELECTRIC METER
		ELECTRIC VAULT
		ELECTRIC JUNCTION BOX
		ELECTRIC TRANSFORMER
		STREET LIGHT

NATURAL GAS LEGEND		
PROPOSED	EXISTING	DESCRIPTION
		GAS METER
		GAS RISER
		GAS VALVE
		GAS MARKER
		GAS VENT

COMMUNICATION LEGEND		
PROPOSED	EXISTING	DESCRIPTION
		TELEPHONE MANHOLE
		TELEPHONE PEDASTAL
		TELEPHONE POLE
		CABLE RISER
		FIBER OPTIC RISER
		FIBER OPTIC MANHOLE
		FIBER OPTIC MARKER

LANDSCAPE LEGEND		
PROPOSED	EXISTING	DESCRIPTION
		SPRINKLER
		DECIDUOUS TREE
		CONIFEROUS TREE

SANITARY SEWER LEGEND		
PROPOSED	EXISTING	DESCRIPTION
		SANITARY SEWER MANHOLE
		CLEAN OUT

STORMWATER LEGEND		
PROPOSED	EXISTING	DESCRIPTION
		GEOTHERMAL MANHOLE
		STORM DRAIN MANHOLE
		DRYWELL
		MONITORING WELL
		RECTANGULAR INLET
		ROUND INLET
		SQUARE INLET
		AREA DRAIN
		ROOF DRAIN
		SAND AND GREASE TRAP

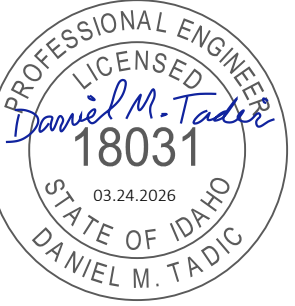
PROPOSED	EXISTING	DESCRIPTION
		BOUNDARY LINE
		ADJACENT PROPERTY LINE
		PROPERTY LINE
		TIE LINE
		SECTION LINE
		ROADWAY CENTERLINE
		EASEMENT LINE
		EDGE OF GRAVEL
		EDGE OF PAVEMENT
		FENCE LINE
		RIGHT-OF-WAY LINE
		SANITARY SEWER LINE
		STORM DRAIN LINE
		WATER LINE
		GRAVITY IRRIGATION LINE
		PRESSURE IRRIGATION LINE
		OVERHEAD POWER LINE
		UNDERGROUND POWER LINE
		UNDERGROUND TELEPHONE LINE
		GAS LINE
		UNDERGROUND CABLE TV
		FIBER OPTICS LINE
		FLOOD LINE
		GEOTHERMAL LINE
		CONCRETE SURFACE
		CURB AND GUTTER
		BUILDING
		ASPHALT SURFACE
		GROUND CONTOUR
		HYDROSEED
		GRADING DIRECTION
		GRADING AREA
		SILT FENCE
		WATTLE
		CONSTRUCTION ENTRANCE
		CUT SLOPE EXTENT
		FILL SLOPE EXTENT



476864 Highway 95, Suite 3
Ponderay, ID 83852
(208) 635-5825

DIVISION AVE. CORRIDOR
IMPROVEMENTS PHASE 2
CITY OF SANDPOINT, IDAHO
BONNER COUNTY

LEGEND



CONSTRUCTION DRAWINGS

1"
SCALE: (11X17 ONLY)

PROJECT NO: GS025-17
DRAWN BY: C. SMITH
CHECKED BY: D. TADIC
DATE: 03.24.2026

© 2026 HMH ENGINEERING

REVISIONS

NO.	DATE	DESCRIPTION

DRAWING:

2

SHEET: 2 OF 13





476864 Highway 95, Suite 3
Ponderay, ID 83852
(208) 635-5825

DIVISION AVE. CORRIDOR
IMPROVEMENTS PHASE 2
CITY OF SANDPOINT, IDAHO
BONNER COUNTY
NOTES

GENERAL NOTES:

1. All work shall conform to the "Idaho Standards For Public Works Construction", (ISPWC) current edition, and the requirements of the City of Sandpoint. In the case of conflict, the most stringent standard shall apply.
2. All safety standards and requirements shall be the responsibility of the Contractor.
3. Existing utilities shall be located by contacting CALL BEFORE YOU DIG at 811, at least 48 hours prior to starting any excavations. The Contractor shall notify the appropriate utility companies prior to starting work near any facilities and shall coordinate their work with company representatives.
4. Existing property corners or survey monuments shall be protected during the course of construction. Any damaged or obliterated corners or monuments shall be re-established by professional surveyors, licensed to work in the State of Idaho, prior to final acceptance. At the contractors expense.

STREET AND SIDEWALK NOTES:

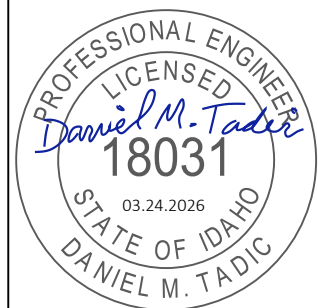
1. Imported fill material shall conform to the following:
 - A. 3/4"-inch minus base course shall meet the requirements of ISPWC Section 802, 3/4"(Type II).
2. Asphalt pavement shall conform with Idaho Transportation Department (ITD) specifications for Superpave. Pavement shall be SP3 PG 58-28 with 1/2" max aggregate size. Pavements with a Section of 3" or less may be placed with 1 lift. Pavements with a section greater than 3" shall be placed with multiple lifts. Minimum lift thickness of 1.5" and maximum thickness of 3".
3. No asphalt shall be placed on wet or frozen surfaces, or when the air or ground temperature is less than 40°F. Top courses or pavement thickness less than 2.5 inches shall not be placed when air or ground temperature is less then 50°F, without approval by the City.
4. Surface restoration shall be constructed in accordance with the latest edition of ISPWC. Restoration shall be hot mix asphalt concrete with a minimum asphalt thickness of 3" or as specified. All concrete, unless otherwise specified, shall be commercial grade Portland Cement with air entrainment (6.5% +/- 1.5%), and a minimum 28-day compressive strength of 3000 psi.
5. A tack coat shall be applied to all adjacent curbs and joints, prior to placement of asphaltic concrete.
6. During paving operations, the Contractor is responsible for compaction and quality control testing. All testing shall be performed by a qualified technician.
7. Extraction, coring, and gradation tests may be required at the discretion of the City to verify pavement thickness, compaction, and or to verify compliance of materials to specifications.
8. Concrete shall not be placed on frozen surfaces, ice or snow, or surfaces with a temperature greater than 90°F. Unless otherwise authorized by the City, concrete placement shall be discontinued when air temperatures reach 35°F and falling.
9. Curb and gutter shall be constructed with full depth construction expansion joints adjacent to catch basins, at cold joints, and at all returns. Weakened plane joints are required every 10 feet.
10. Sidewalks shall be constructed with full depth expansion joints every 20 feet, at cold joints, and adjacent to structures. Weakened plane joints shall be located every 5 feet. Joints in the sidewalk shall be aligned with curb joints, as nearly as practical.

EROSION & SEDIMENT CONTROL NOTES:

1. Temporary erosion control and water pollution measures shall be installed, in accordance with the plans and accepted best management practices. Adjustments to accommodate differing field conditions shall be made, as necessary, throughout the construction process. At no time, will silt and/or debris be allowed to drain into an existing or newly installed facility.
2. Topsoil shall be placed within street side planting strips at a depth of 4-inches (min).
3. The Contractor shall maintain the streets, sidewalks, and all other public rights-of-way in a clean, safe and useable condition. All soil, rock, or construction debris shall be promptly removed from the publicly owned property during construction, and upon completion of the project. All adjacent property; private or public, shall be maintained in a clean, safe and useable condition.

EARTHWORK AND GRADING NOTES:

1. All cuts and fills shall be confined to the limits indicated within the plans.
2. The Contractor shall ensure that all temporary slopes are stable and that appropriate erosion measures are in place and maintained.
3. Groundwater or unanticipated geologic conditions shall be reported to the Engineer of Record for assessment and recommendations.
4. Compaction shall be performed in accordance with ISPWC requirements. All compaction efforts shall be monitored and tested by an experienced Soil Technician representing the Contractor.
5. Earthwork and grading shall be performed in accordance with ISPWC requirements. All earthwork and grading shall be monitored and tested by a qualified Soil Technician representing the Contractor.
6. Clear and grub to the limits shown on the plans. Remove all debris, trees, stumps, brush, roots, organic soil, existing fill or any other deleterious material as indicated. Onsite disposal of organic materials is not allowed.
7. Engineered fills shall conform to the requirements of the ISPWC and approved plans.
8. Boulders and cobbles greater than 6 inches appearing in the excavation to a depth of at least 4 inches below subgrade shall be removed.
9. All fill material shall be moisture conditioned to within 2% of the optimum moisture, prior to placement. Lifts shall not exceed eight inches. All fill shall be compacted to at least 90% of Modified Proctor (ASTM D-1557, AASHTO T-180), with the top 12 inches within the roadway prism compacted to 95% of the modified proctor. Material too coarse to test per the specified standards shall be placed in controlled lifts under a performance based method, as outlined within ISPWC.
10. Embankments shall not be constructed on frozen or snow-covered ground, or with frozen materials.
11. In the event that any unforeseen conditions not covered by these notes are encountered during grading operations, the Engineer of Record shall be immediately notified in order to provide guidance to Contractor.



CONSTRUCTION DRAWINGS

1"
SCALE: (11X17 ONLY)

PROJECT NO: GS025-17
DRAWN BY: C. SMITH
CHECKED BY: D. TADIC
DATE: 03.24.2026

© 2026 HMH ENGINEERING

REVISIONS

NO.	DATE	DESCRIPTION

DRAWING:

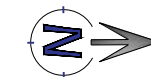
3

SHEET: 3 OF 13

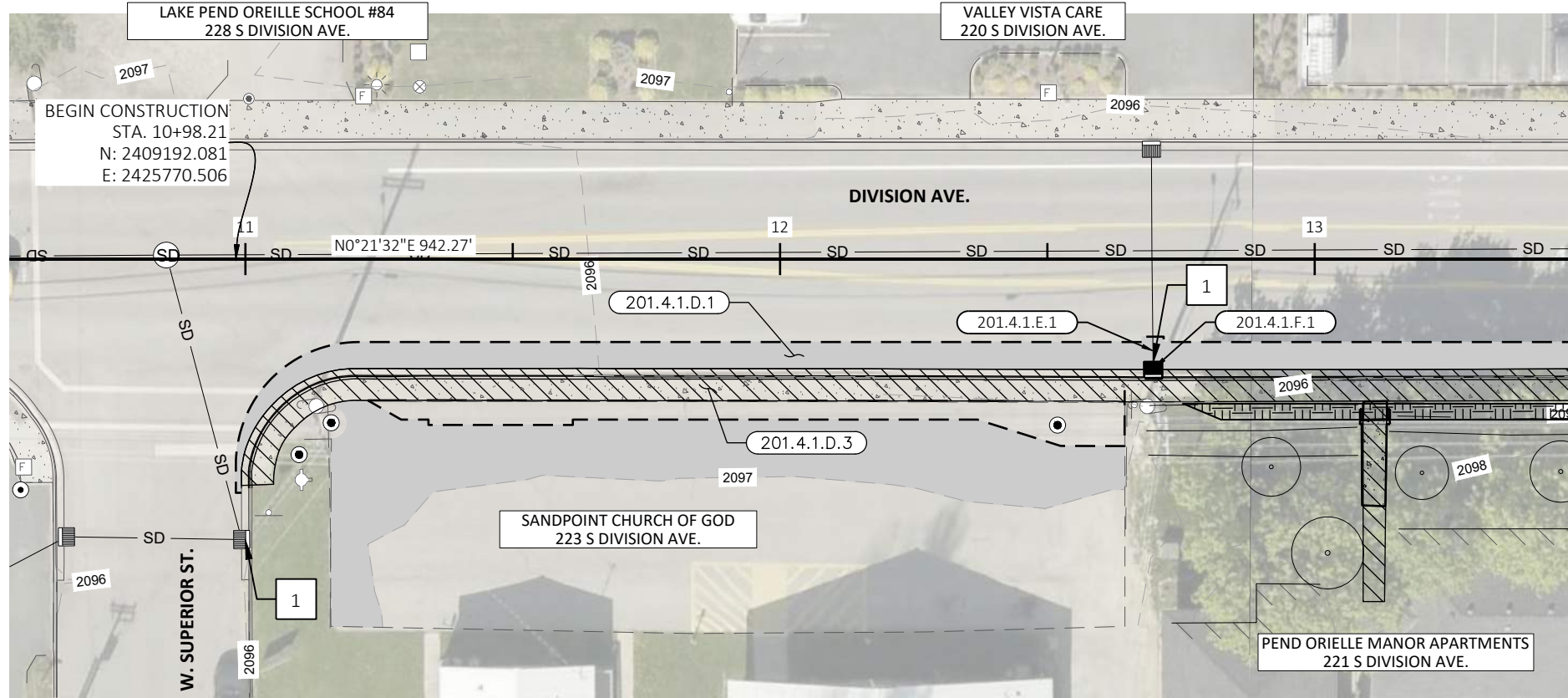
PLOT DATE: 3/24/2026 7:04 PM PLOTTED BY: DYLAN JONES
 LAYOUT: NOTES_1 PATH: Z:\DOCUMENTS\PROJECTS\2025\GS025-17\CITY OF SANDPOINT ENGINEERING SERVICES\DIVISION AVE IMPROVEMENTS PH 2\CAD\PLAN SHEETS\GS025-17 NOTES.DWG



DIVISION AVE. CORRIDOR
IMPROVEMENTS PHASE 2
CITY OF SANDPOINT, IDAHO
BONNER COUNTY
DEMOLITION PLAN



SCALE 1"=30'



MATCHLINE - STA: 13+50

201.4.1.B.1 CLEARING AND GRUBBING
20 CY STA 12+75.3 - 14+01.1 RT
10 CY STA 14+73.6 - 15+33.4 RT
1 CY STA 16+40.7 - 16+50.0 RT

201.4.1.D.1 REMOVAL OF EXISTING ASPHALT PAVEMENT
442.2 SY STA 10+97.7 - 16+50.0 RT

201.4.1.D.3 REMOVAL OF EXISTING CONCRETE
265.2 SY STA 10+99.3 - 14+23.8 RT
131.3 SY STA 14+56.6 - 16+50.0 RT

201.4.1.E.1 REMOVAL OF EXISTING STORM PIPE
4.0 LF STA 12+69.7 RT
2.0 LF STA 14+39.9 RT
10.0 LF STA 14+48.5 RT
10.0 LF STA 14+31.2 RT

201.4.1.E.3 REMOVAL OF EXISTING FENCE
95 LF STA 15+12.8 - 16+07.5 RT

201.4.1.F.1 REMOVAL OF EXISTING CATCH BASIN
1.0 EA STA 12+69.9, 20.87' RT
1.0 EA STA 14+21.8, 34.19' RT
1.0 EA STA 14+58.1, 35.71' RT

1106.4.1.A.1 REMOVAL OF PAVEMENT MARKINGS
PROJECT WIDE LS

LEGEND:

CLEARING AND GRUBBING

REMOVAL OF ASPHALT

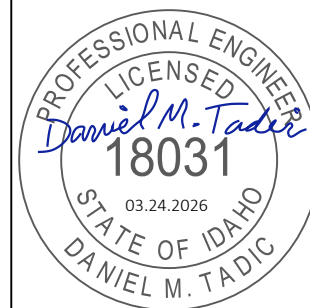
REMOVAL OF CONCRETE

SAWCUT

1 SEDIMENT CONTROL
SEE DETAIL SHEET 11

2 REMOVE & RESET - BY CITY

NOTE:
SAWCUT & REMOVAL OF ASPHALT SHOWN ON PLAN IS THE LIMIT OF PAY. OWNER WILL NOT PAY FOR ADDITIONAL ASPHALT REMOVAL UNLESS AGREED TO IN WRITING.



CONSTRUCTION DRAWINGS

SCALE: (11X17 ONLY)
PROJECT NO: GS025-17
DRAWN BY: C. SMITH
CHECKED BY: D. TADIC
DATE: 03.24.2026
© 2026 HMM ENGINEERING

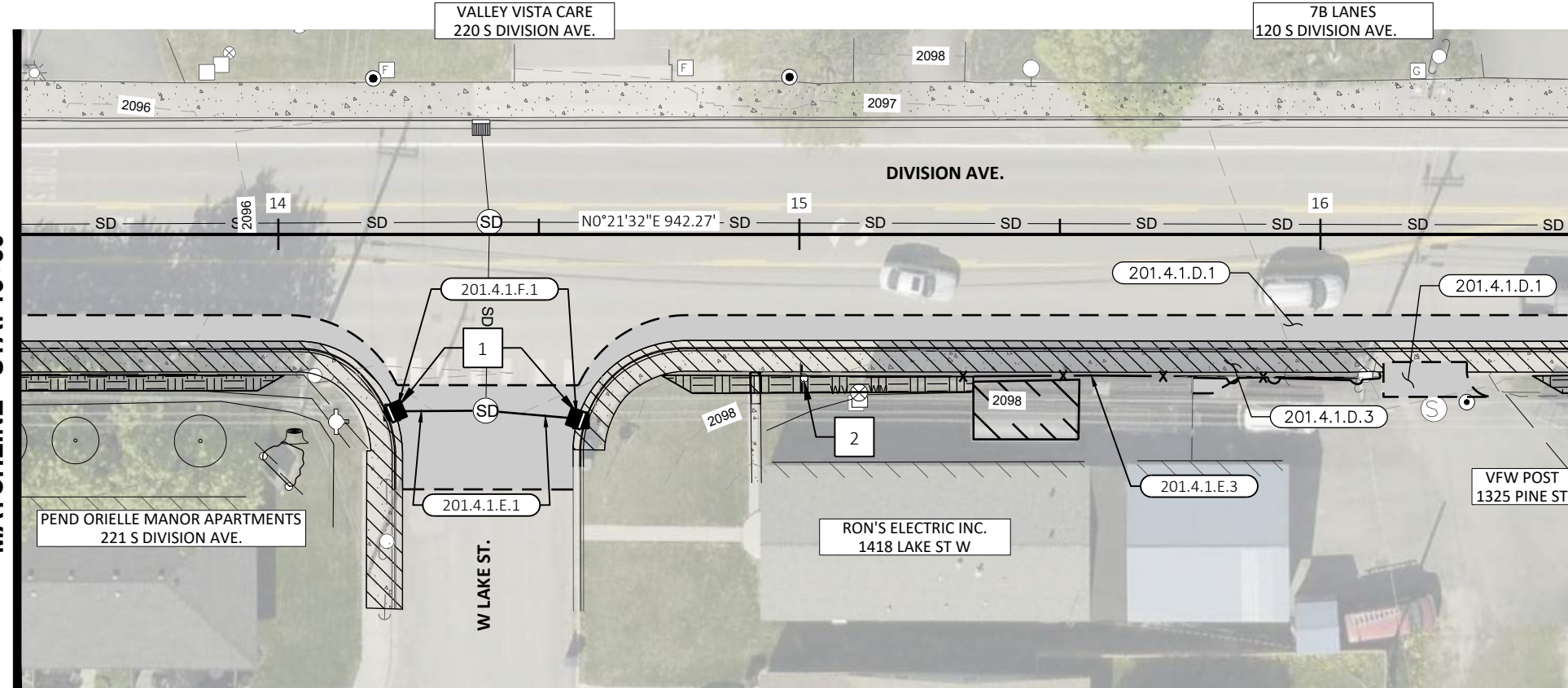
REVISIONS

NO.	DATE	DESCRIPTION

DRAWING:

4

SHEET: 4 OF 13

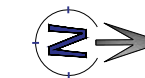


MATCHLINE - STA: 16+50

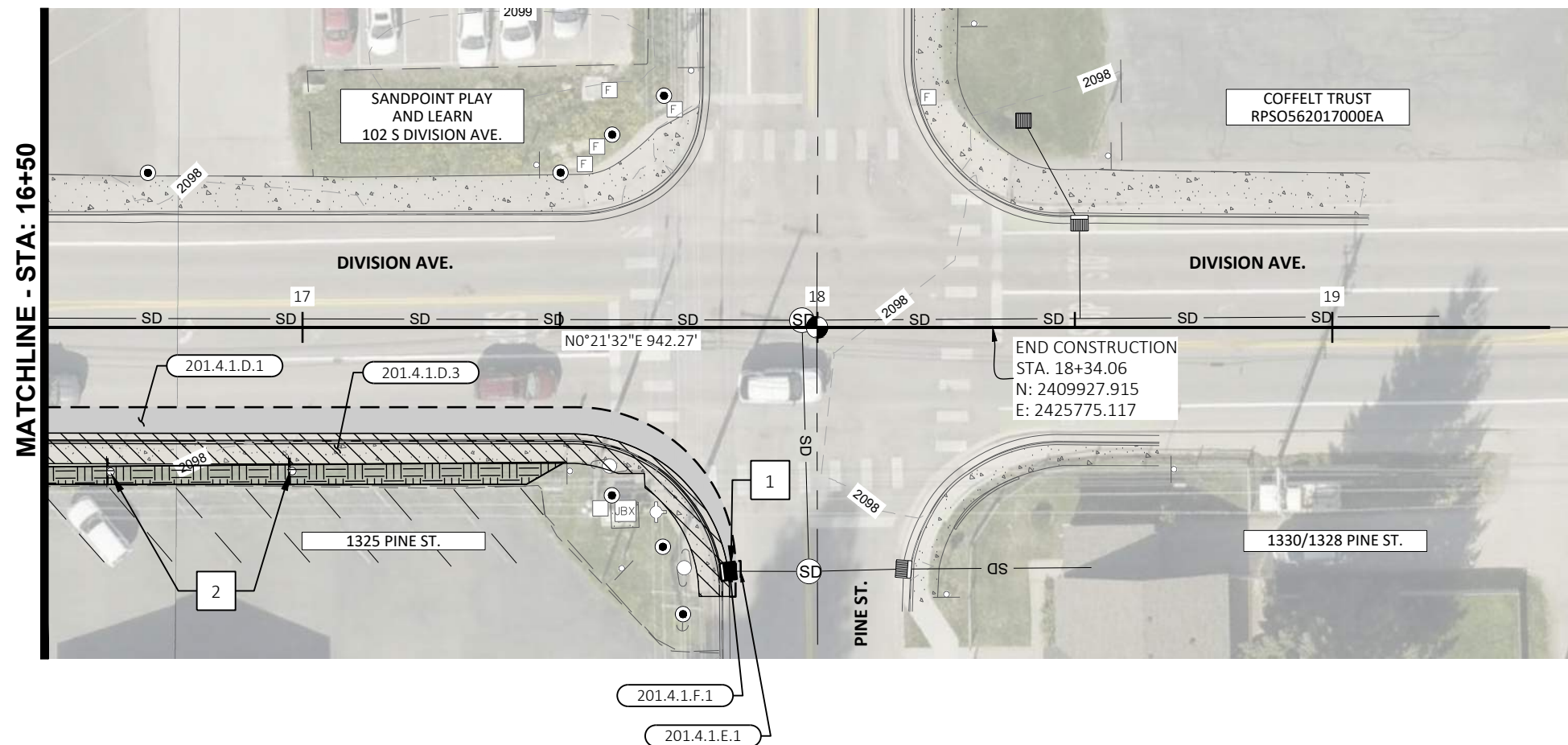
MATCHLINE - STA: 13+50

PLOT DATE: 3/24/2026 7:17 PM PLOTTED BY: DRAKE SCOTT LAYOUT: DEMO_1_PATH: Z:\DOCUMENTS\PROJECTS\2025\GS025-17\CAD\PLAN SHEETS\GS025-17 DEMO_1.DWG





SCALE 1"=30'



- 201.4.1.B.1 CLEARING AND GRUBBING
21 CY STA 16+50.0 - 17+50.9 RT
- 201.4.1.D.1 REMOVAL OF EXISTING ASPHALT PAVEMENT
80.4 SY STA 16+50.0 - 17+84.6 RT
- 201.4.1.D.3 REMOVAL OF EXISTING CONCRETE
95.3 SY STA 16+50.0 - 17+82.92 RT
- 201.4.1.E.1 REMOVAL OF EXISTING STORM PIPE
2.0 LF STA 17+84.6 RT
- 201.4.1.F.1 REMOVAL OF EXISTING CATCH BASIN
1.0 EA STA 17+82.7, 47.39' RT
- 1106.4.1.A.1 REMOVAL OF PAVEMENT MARKINGS
PROJECT WIDE LS

LEGEND:

CLEARING AND GRUBBING

REMOVAL OF ASPHALT

REMOVAL OF CONCRETE

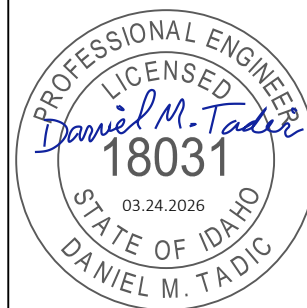
SAWCUT

SEDIMENT CONTROL
SEE DETAIL SHEET 11

REMOVE & RESET - BY CITY

NOTE:
SAWCUT & REMOVAL OF ASPHALT SHOWN ON PLAN IS THE LIMIT OF PAY. OWNER WILL NOT PAY FOR ADDITIONAL ASPHALT REMOVAL UNLESS AGREED TO IN WRITING.

DIVISION AVE. CORRIDOR
IMPROVEMENTS PHASE 2
CITY OF SANDPOINT, IDAHO
BONNER COUNTY
DEMOLITION PLAN



CONSTRUCTION
DRAWINGS

SCALE: (11X17 ONLY)
PROJECT NO: GS025-17
DRAWN BY: C. SMITH
CHECKED BY: D. TADIC
DATE: 03.24.2026

© 2026 HMH ENGINEERING

REVISIONS

NO.	DATE	DESCRIPTION

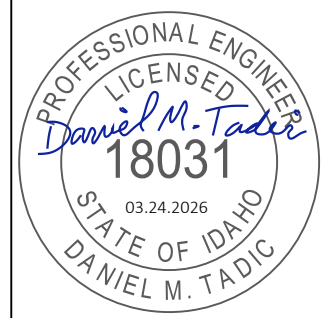
DRAWING:

5

SHEET: 5 OF 13



**DIVISION AVE. CORRIDOR
IMPROVEMENTS PHASE 2**
CITY OF SANDPOINT, IDAHO
BONNER COUNTY
ROADWAY IMPROVEMENTS PLAN



**CONSTRUCTION
DRAWINGS**

1"
SCALE: (11X17 ONLY)

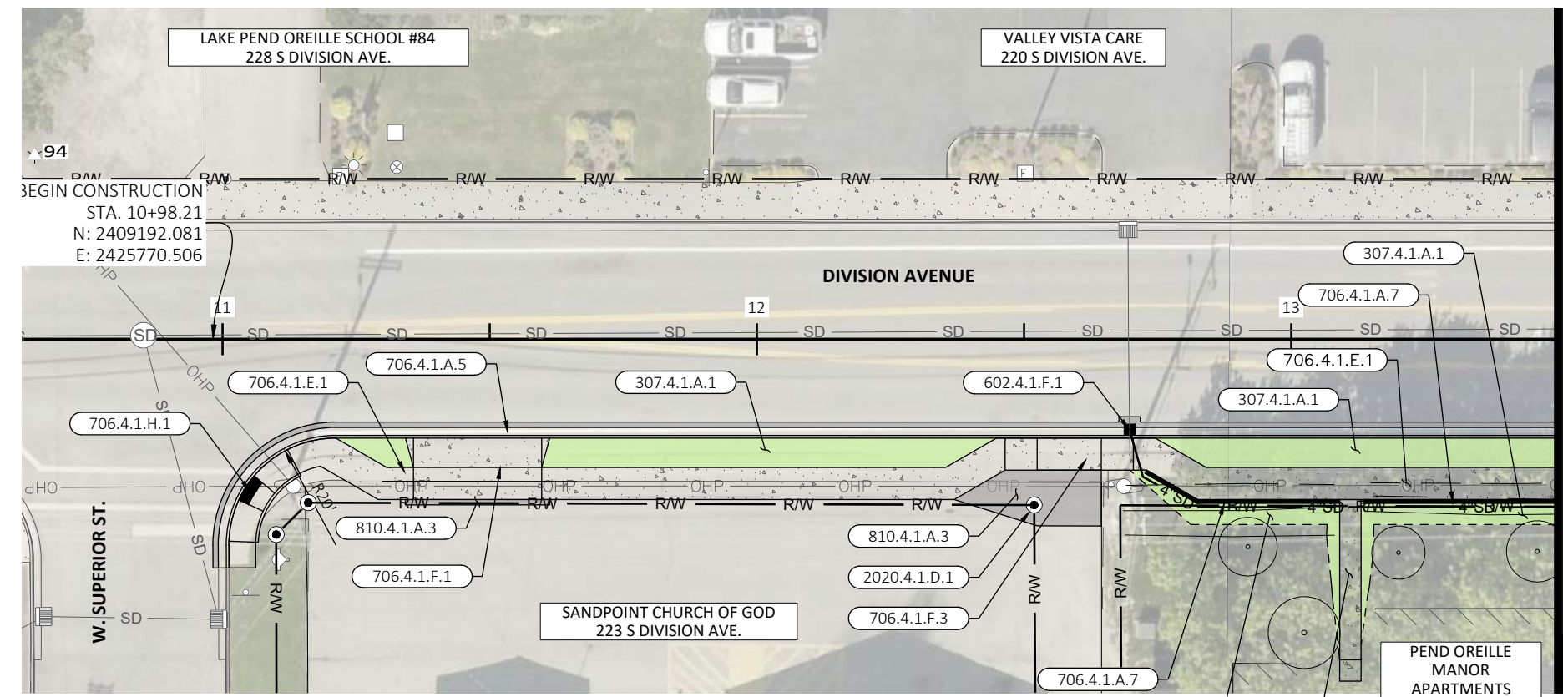
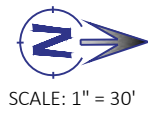
PROJECT NO: GS025-17
DRAWN BY: C. SMITH
CHECKED BY: D. TADIC
DATE: 03.24.2026

© 2026 HMH ENGINEERING

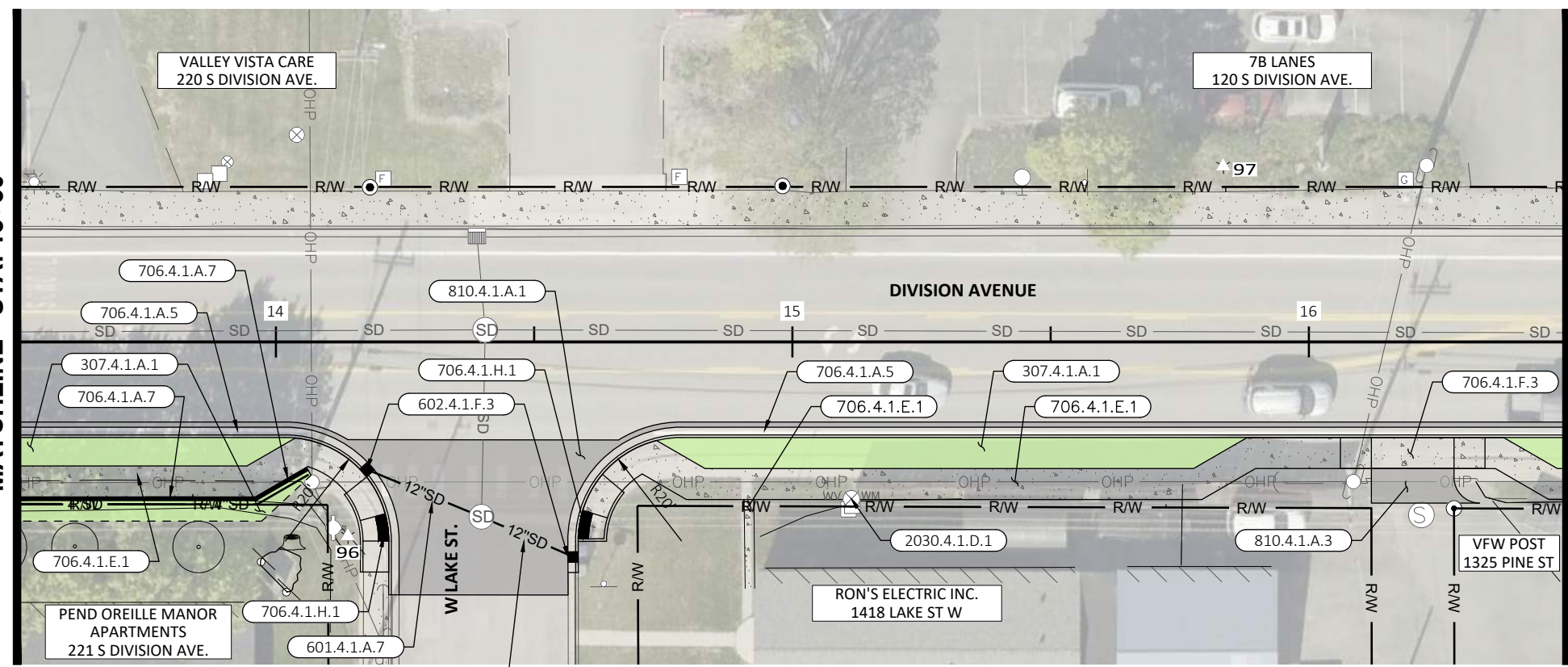
REVISIONS

NO.	DATE	DESCRIPTION

DRAWING:
6
SHEET: 6 OF 13



MATCHLINE - STA: 13+50



MATCHLINE - STA: 13+50

MATCHLINE - STA: 16+50

- 307.4.1.A.1 MISCELLANEOUS SURFACE RESTORATION (LANDSCAPING)
70 SY STA 11+21.2 – STA 12+44.8 RT
146 SY STA 12+74.6 – STA 14+05.9 RT
66 SY STA 14+73.7 – STA 15+88.1 RT
5 SY STA 16+37.7 – 16+50.0 RT
- 602.4.1.F.1 CATCH BASIN WSDOT TYPE 1 W/ COMBINATION INLET
1 EASTA 14+17.7, 24.7' RT
1 EA STA 14+56.5, 41.6' RT
- 602.4.1.F.3 CATCH BASIN WSDOT TYPE 1 W/ RECTANGULAR FRAME AND HERRIBONE GRATE
1 EA STA 12+69.8, 17.0' RT
- 706.4.1.A.5 STANDARD 6-INCH VERTICAL CURB & GUTTER
359 LF STA 10+99.2 – 14+23.8 RT
210 LF STA 14+56.6 – 16+50.0 RT
- 706.4.1.E.1 CONCRETE SIDEWALKS, THICKNESS 4"
241 SY STA 11+01.2 – STA 14+21.9 RT
134 SY STA 14+58.5 – STA 16+50.0 RT
- 706.4.1.F.1 CITY OF SANDPOINT CONCRETE DRIVEWAY A
32 SY STA 11+48.6 RT
- 706.4.1.F.3 CITY OF SANDPOINT CONCRETE DRIVEWAY B
16 SY STA 12+58.5 RT
19 SY STA 16+20.2 RT
- 706.4.1.H.1 PEDESTRIAN RAMP W/DETECTABLE WARNING DOMES TYPE G
11 SY STA 11+06.0 RT
11 SY STA 14+19.7 RT
8 SY STA 14+60.8 RT
- 810.4.1.A.1 PLANT MIX PAVEMENT 4"
181 SY STA 10+98.2 – 16+50.0 RT
- 810.4.1.A.3 PLANT MIX PAVEMENT 2.5"
4 SY STA 11+34.2 – STA 11+61.2 RT
25 SY STA 12+36.9 – STA 12+64.4 RT
12 SY STA 16+12.1 – STA 16+33.0 RT
- 2030.4.1.D.1 MISCELLANEOUS UTILITY, ADJUST TO GRADE
1 EA STA 15+11.5, 30.4' RT
- 2020.4.1.D.1 ADJUSTING EXISTING MONUMENTS TO GRADE
1 EA STA 12+50
- 601.4.1.A.7 12-INCH STORM DRAIN PIPE. CLASS AASHTO M 294 CORRUGATED POLYETHYLENE PIPE (CPP)
24 LF STA. 14+28
19 LF STA. 14+48
- 706.4.1.A.7 LOW PROFILE BARRIER CURB
37 LF STA. 12+72 TO STA. 13+09
92.5 LF STA. 13+13.5 TO STA. 14+06

PLOT DATE: 3/24/2026 7:15 PM PLOTTED BY: DYLAN JONES
LAYOUT: PLAN 1 PATH: Z:\DOCUMENTS\PROJECTS\2025\GS025-17\CITY OF SANDPOINT ENGINEERING SERVICES\DIVISION AVE IMPROVEMENTS PH 2\CAD\PLAN SHEETS\GS025-17.PLAN.DWG

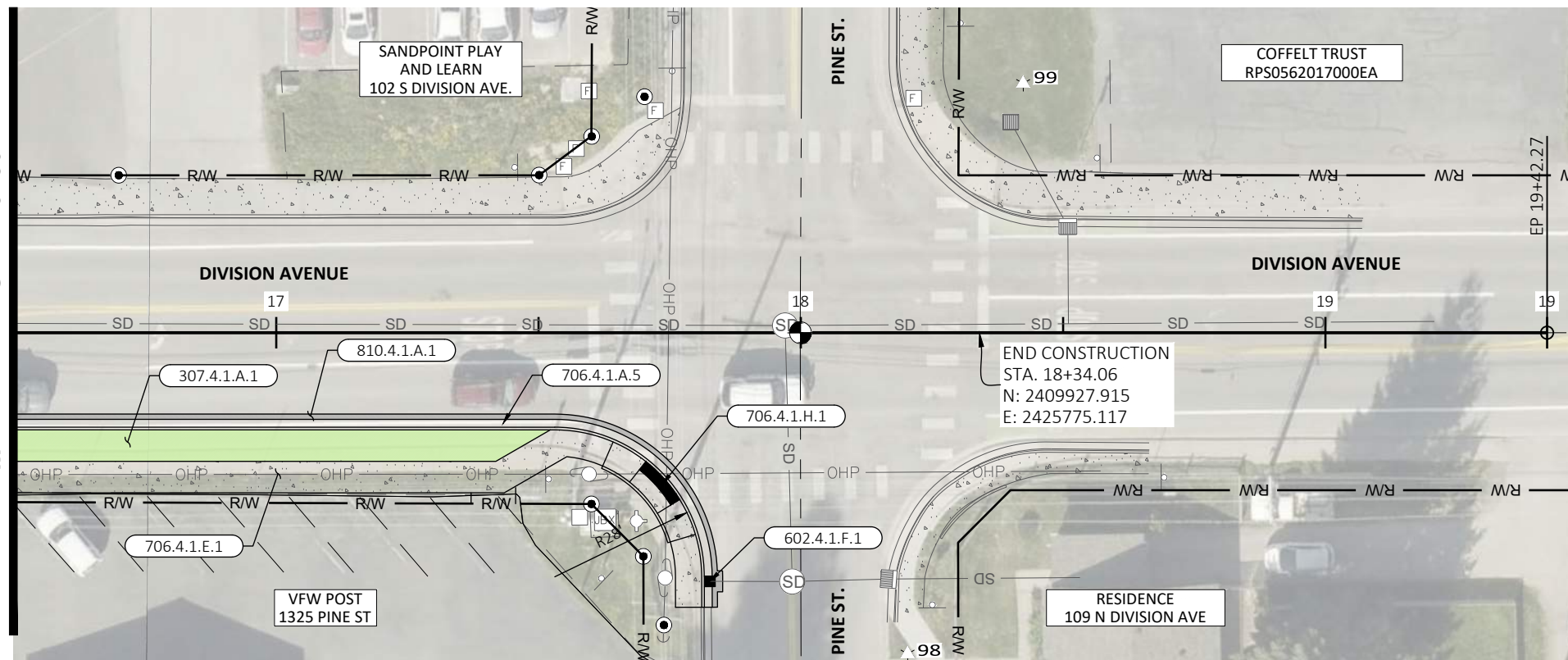




SCALE: 1" = 30'

7B LANES
120 S DIVISION AVE.

MATCHLINE - STA: 16+50



307.4.1.A.1 MISCELLANEOUS SURFACE RESTORATION (LANDSCAPING)
65 SY STA 16+50.0 – STA 17+52.3 RT

602.4.1.F.1 CATCH BASIN WSDOT TYPE 1 W/ COMBINATION INLET
1 EA STA 17+82.7, 47.4' RT

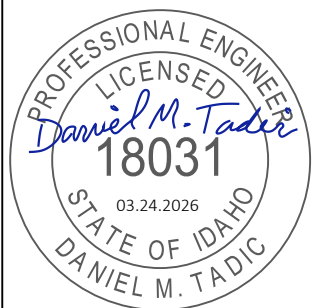
706.4.1.A.5 STANDARD 6-INCH VERTICAL CURB & GUTTER
154 LF STA 16+50.0 – STA 17+83.1 RT

706.4.1.E.1 CONCRETE SIDEWALKS, THICKNESS 4"
93 SY STA 16+50.0 – STA 17+81.1 RT

706.4.1.H.1 PEDESTRIAN RAMP W/DETECTABLE WARNING DOMES TYPE G
13 SY STA 17+72.5 RT

810.4.1.A.3 PLANT MIX PAVEMENT 4"
19 SY STA 16+50.0 – STA 17+85.1

DIVISION AVE. CORRIDOR
IMPROVEMENTS PHASE 2
CITY OF SANDPOINT, IDAHO
BONNER COUNTY
ROADWAY IMPROVEMENTS PLAN



CONSTRUCTION
DRAWINGS

1"
SCALE: (11X17 ONLY)

PROJECT NO: GS025-17
DRAWN BY: C. SMITH
CHECKED BY: D. TADIC
DATE: 03.24.2026

© 2026 HMH ENGINEERING

REVISIONS

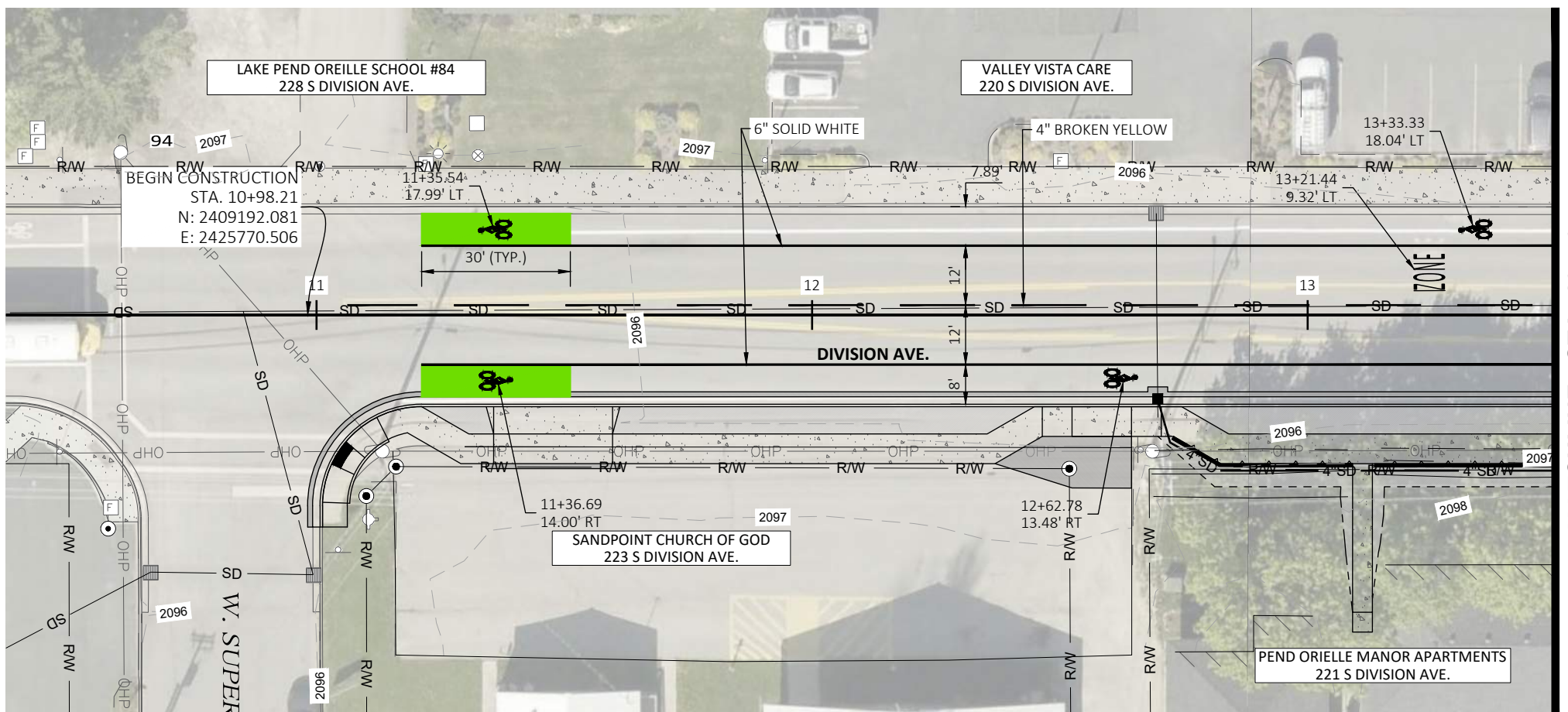
NO.	DATE	DESCRIPTION

DRAWING:

7

SHEET: 7 OF 13

PLOT DATE: 3/24/2026 7:36 PM PLOTTED BY: DYLAN JONES
 LAYOUT: PLAN 1 PATH: Z:\DOCUMENTS\PROJECTS\2025\GS025-17\CITY OF SANDPOINT ENGINEERING SERVICES\DIVISION AVE IMPROVEMENTS PH 2\CAD\PLAN SHEETS\GS025-17 STRIPING.DWG



MATCHLINE - STA: 13+50



SCALE: 1" = 30'

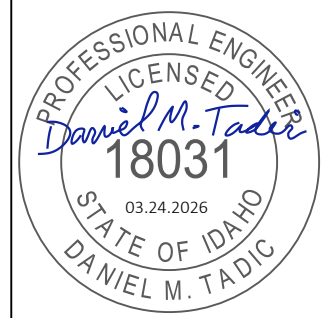
1104.4.1.A.1 PAVEMENT LINE PAINT OR PAINTED TRAFFIC MARKINGS
 1,391 SF STA 11+06.3 - STA 16+50.0

1104.4.1.A.3 THERMOPLASTIC PAVEMENT MARKINGS
 301 SF STA 11+06.3 - STA 16+50.0



476864 Highway 95, Suite 3
 Ponderay, ID 83852
 (208) 635-5825

DIVISION AVE. CORRIDOR
 IMPROVEMENTS PHASE 2
 CITY OF SANDPOINT, IDAHO
 BONNER COUNTY
 PAVEMENT MARKING PLAN



CONSTRUCTION
 DRAWINGS

SCALE: (11X17 ONLY)

PROJECT NO: GS025-17
 DRAWN BY: C. SMITH
 CHECKED BY: D. TADIC
 DATE: 03.24.2026

© 2026 HMH ENGINEERING

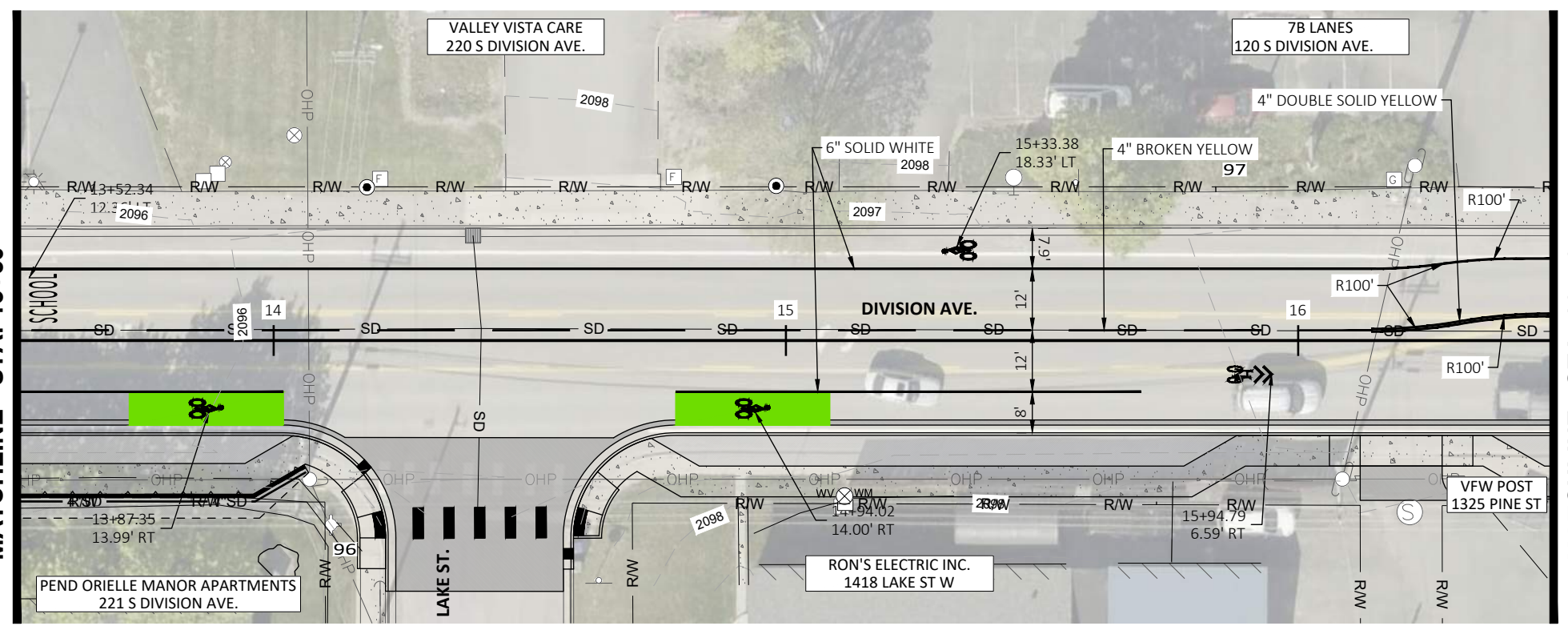
REVISIONS

NO.	DATE	DESCRIPTION

DRAWING:

8

SHEET: 8 OF 13

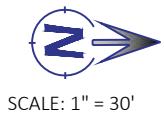
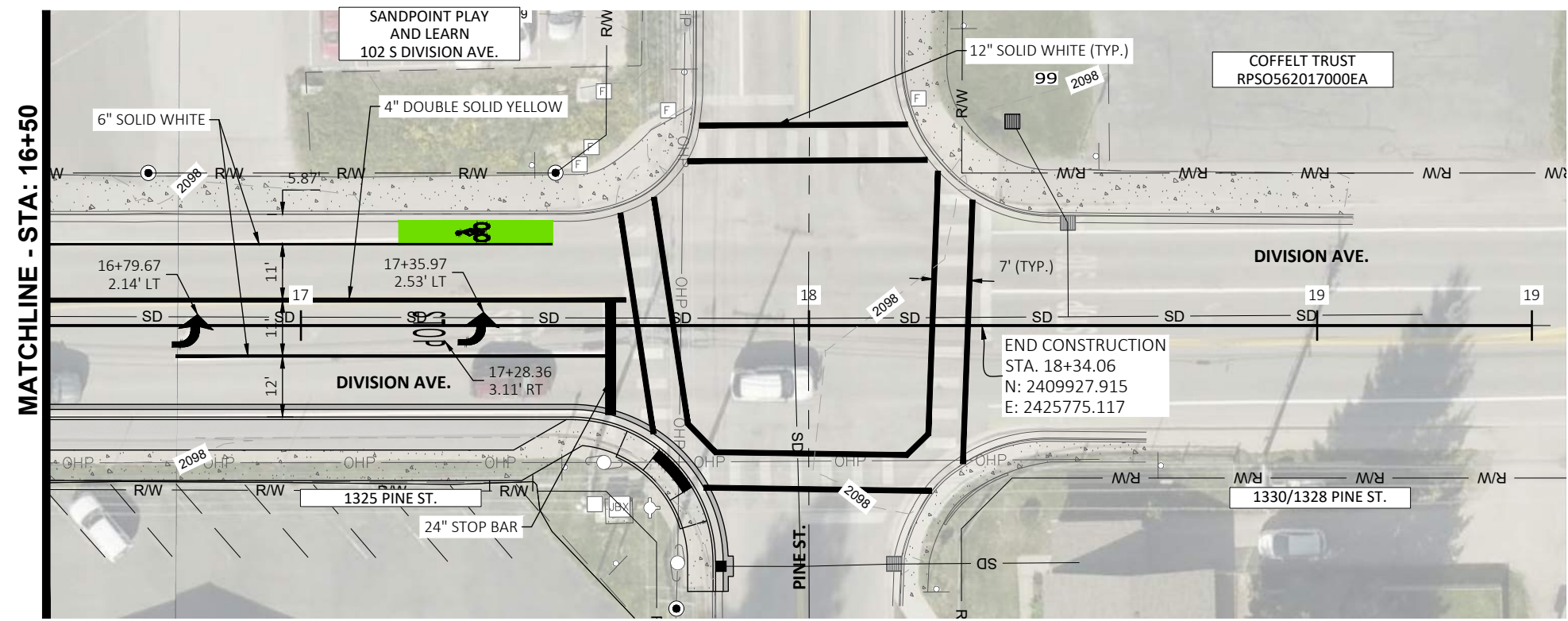


MATCHLINE - STA: 13+50

MATCHLINE - STA: 16+50



PLOT DATE: 3/24/2026 7:35 PM PLOTTED BY: DYLAN JONES
 LAYOUT: PLAN 2 PATH: Z:\DOCUMENTS\PROJECTS\2025\GS025-17\CITY OF SANDPOINT ENGINEERING SERVICES\DIVISION AVE IMPROVEMENTS PH 2\CAD\PLAN SHEETS\GS025-17 STRIPING.DWG



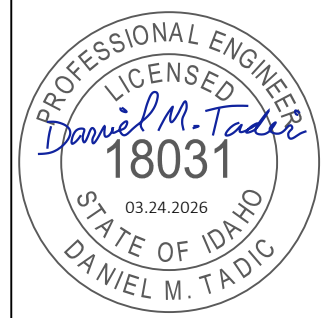
1104.4.1.A.1 PAVEMENT LINE PAINT OR PAINTED TRAFFIC MARKINGS
 364 SF STA 16+50.0 - STA 18+32.2

1104.4.1.A.3 THERMOPLASTIC PAVEMENT MARKINGS
 488 SF STA 16+50.0 - 18+32.2



476864 Highway 95, Suite 3
 Ponderay, ID 83852
 (208) 635-5825

DIVISION AVE. CORRIDOR IMPROVEMENTS PHASE 2
 CITY OF SANDPOINT, IDAHO
 BONNER COUNTY
PAVEMENT MARKING PLAN



CONSTRUCTION DRAWINGS

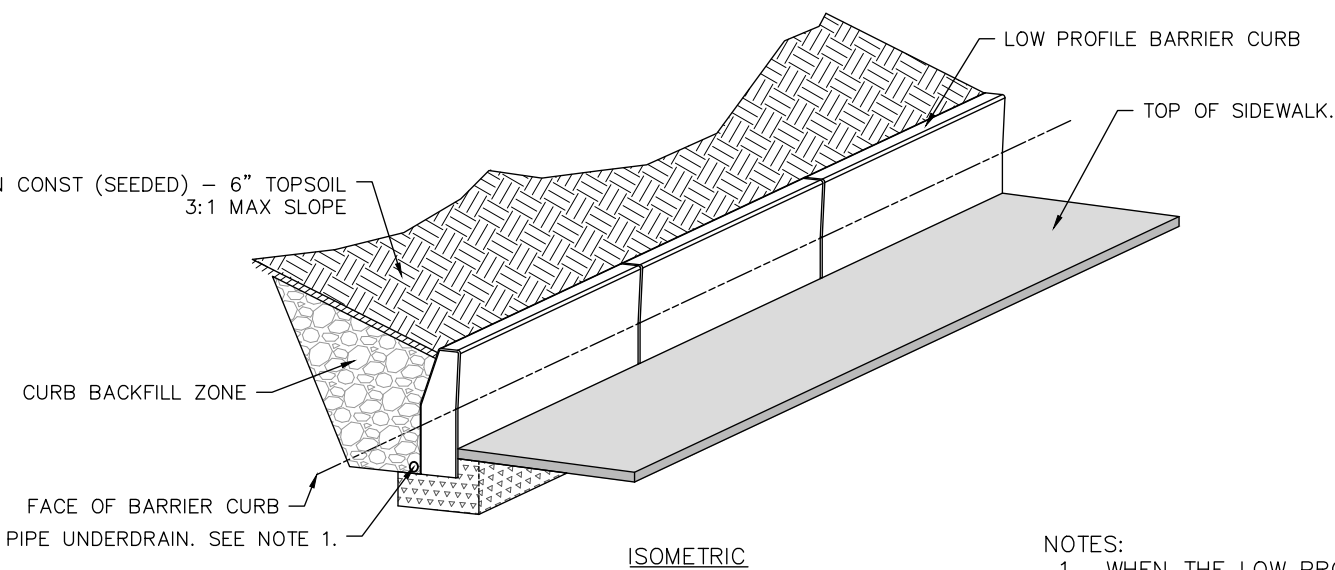
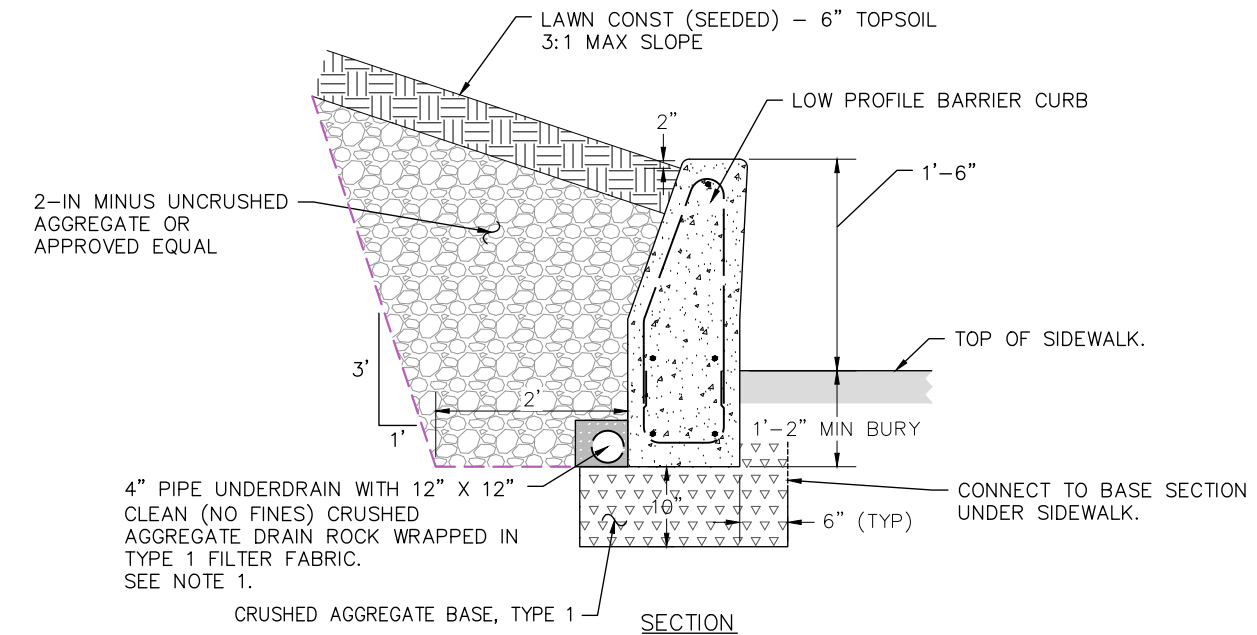
1"
 SCALE: (11X17 ONLY)

PROJECT NO: GS025-17
 DRAWN BY: C. SMITH
 CHECKED BY: D. TADIC
 DATE: 03.24.2026

REVISIONS

NO.	DATE	DESCRIPTION

DRAWING:
 9
 SHEET: 9 OF 13

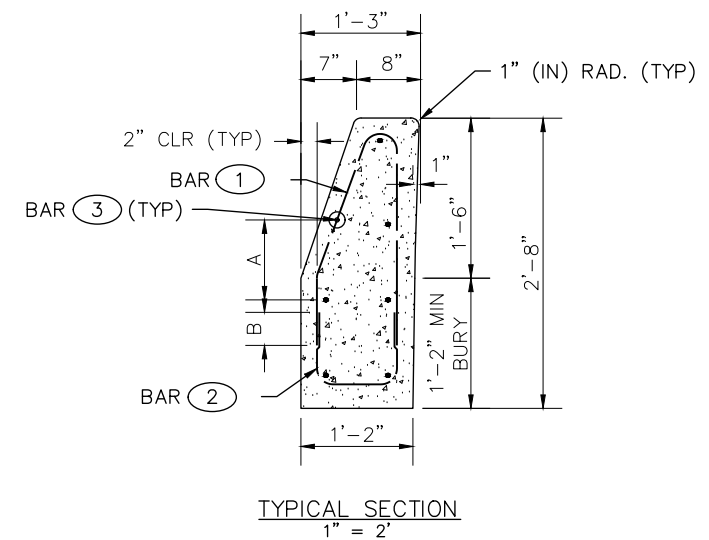


INSTALLATION

WHERE USED:
STA 12+72.61 - STA 13+09.05 RT
STA 13+13.53 - STA 14+06.25 RT

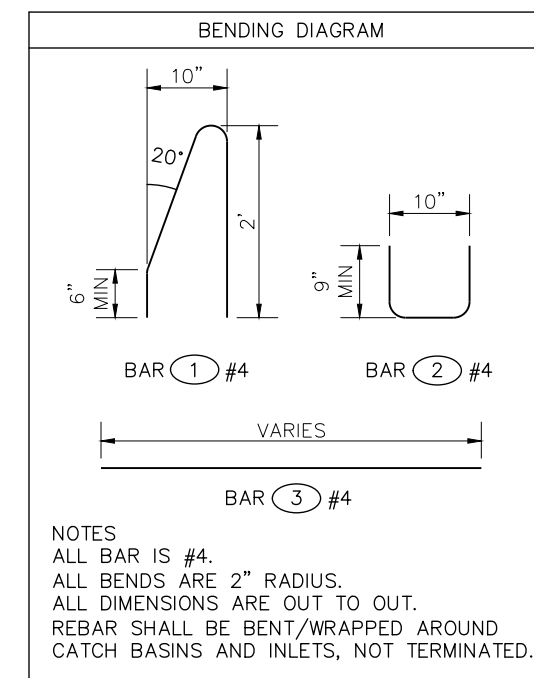
- NOTES:
1. WHEN THE LOW PROFILE BARRIER CURB TERMINATES, USE NON PERFORATED PIPE AND EXTEND THE PIPE UNDERDRAIN TO CONNECT DIRECTLY INTO AN INLET AS SPECIFIED ON THE PLANS. ENSURE POSITIVE DRAINAGE FROM THE PIPE UNDERDRAIN TO THE INLET.

LOW PROFILE BARRIER CURB INSTALLATION

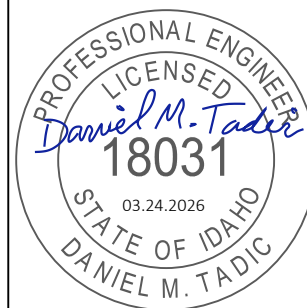


DIMENSION	NOTE	MIN
A	DISTANCE BETWEEN HORIZONTAL BAR (3)	**SEE NOTE
B	OVERLAP BETWEEN BAR (1) AND BAR (2)	6"

** MINIMUM OF 3 ROWS OF HORIZONTAL BAR REQUIRED, SET AT 2 EQUAL SPACES. MAXIMUM DISTANCE BETWEEN HORIZONTAL BARS SHALL BE NO GREATER THAN 11" (IN).



- NOTES:
ALL BAR IS #4.
ALL BENDS ARE 2" RADIUS.
ALL DIMENSIONS ARE OUT TO OUT.
REBAR SHALL BE BENT/WRAPPED AROUND CATCH BASINS AND INLETS, NOT TERMINATED.



CONSTRUCTION DRAWINGS

SCALE: (11X17 ONLY)
PROJECT NO: GS025-17
DRAWN BY: C. SMITH
CHECKED BY: D. TADIC
DATE: 03.24.2026

© 2026 HMH ENGINEERING

REVISIONS

NO.	DATE	DESCRIPTION

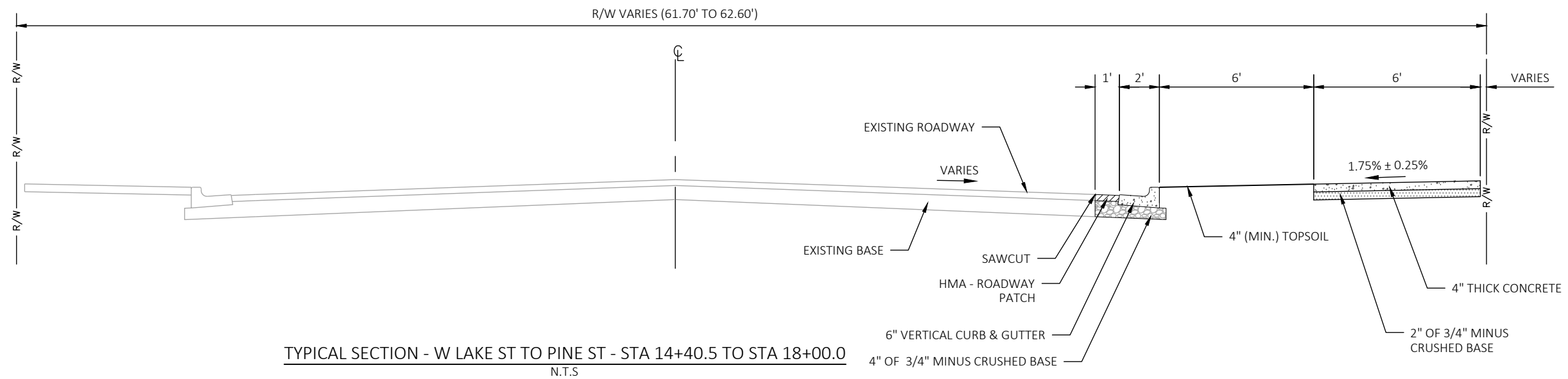
DRAWING:

10

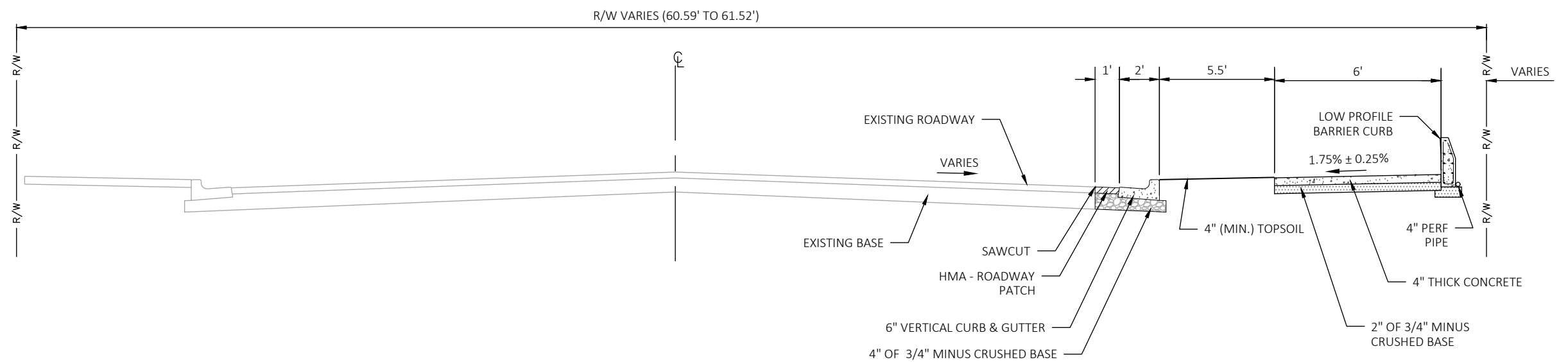
SHEET: 10 OF 13

**DIVISION AVE. CORRIDOR
IMPROVEMENTS PHASE 2**
CITY OF SANDPOINT, IDAHO
BONNER COUNTY

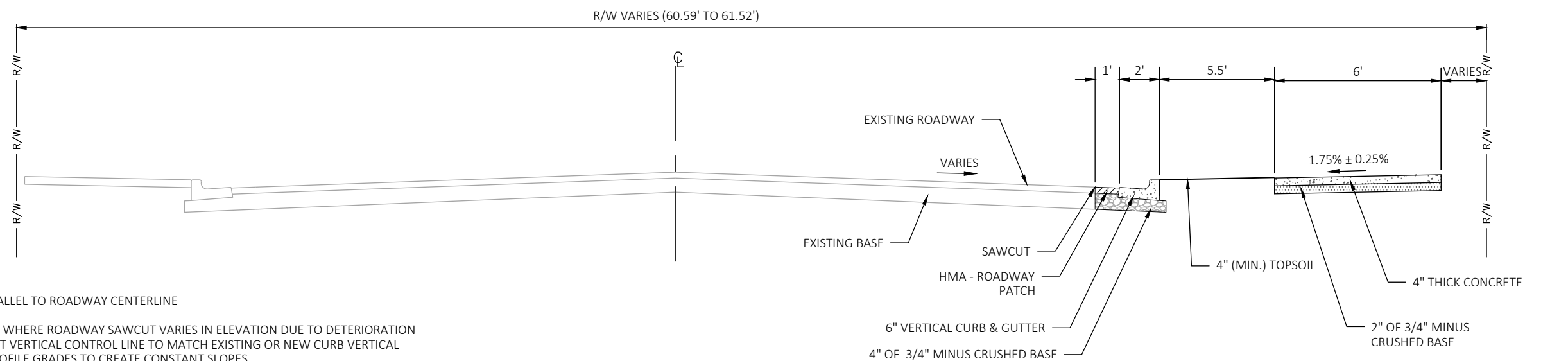
DETAILS



TYPICAL SECTION - W LAKE ST TO PINE ST - STA 14+40.5 TO STA 18+00.0
N.T.S



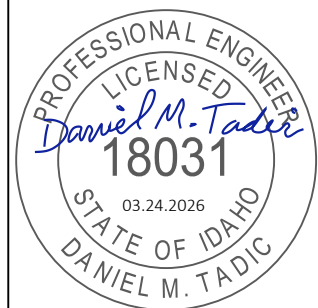
TYPICAL SECTION - SOUTH TO NORTH END OF CURB WALL - STA 12+72.6 TO STA 14+06.3
N.T.S



TYPICAL SECTION - W SUPERIOR ST TO W LAKE ST - STA 10+82.9 TO STA 12+72.6 AND STA 14+06.3 TO STA 14+40.5
N.T.S

NOTES:

1. SAWCUT PARALLEL TO ROADWAY CENTERLINE
2. IN INSTANCES WHERE ROADWAY SAWCUT VARIES IN ELEVATION DUE TO DETERIORATION OR RUTS; ADJUST VERTICAL CONTROL LINE TO MATCH EXISTING OR NEW CURB VERTICAL CURVES AND PROFILE GRADES TO CREATE CONSTANT SLOPES



**CONSTRUCTION
DRAWINGS**

1"
SCALE: (11X17 ONLY)

PROJECT NO: GS025-17
DRAWN BY: C. SMITH
CHECKED BY: D. TADIC
DATE: 03.24.2026

© 2026 HMH ENGINEERING

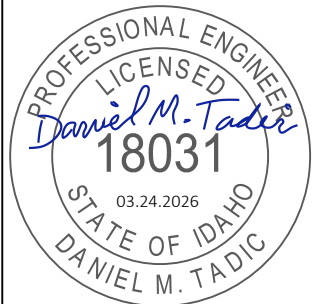
REVISIONS

NO.	DATE	DESCRIPTION

DRAWING:

11

SHEET: 11 OF 13



CONSTRUCTION
DRAWINGS

1"
SCALE: (11X17 ONLY)

PROJECT NO: GS025-17
DRAWN BY: C. SMITH
CHECKED BY: D. TADIC
DATE: 03.24.2026

© 2026 HMH ENGINEERING

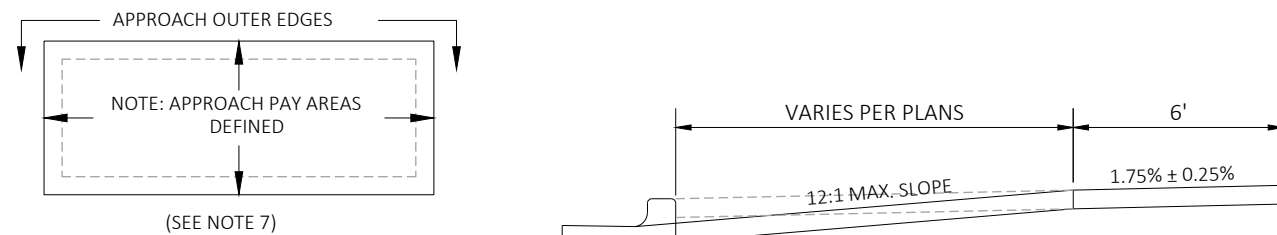
REVISIONS

NO.	DATE	DESCRIPTION

DRAWING:

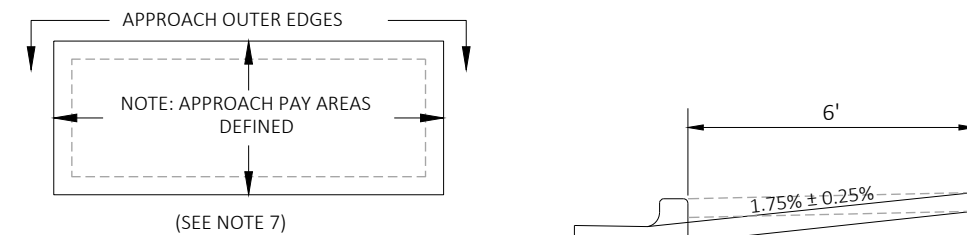
12

SHEET: 12 OF 13



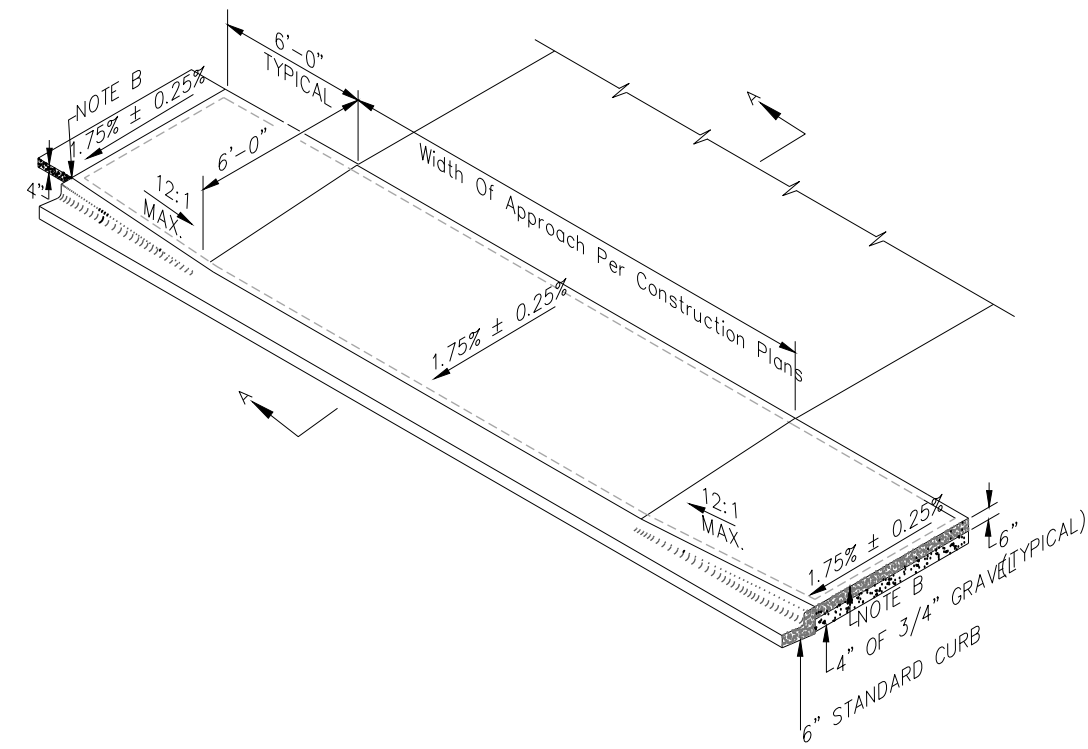
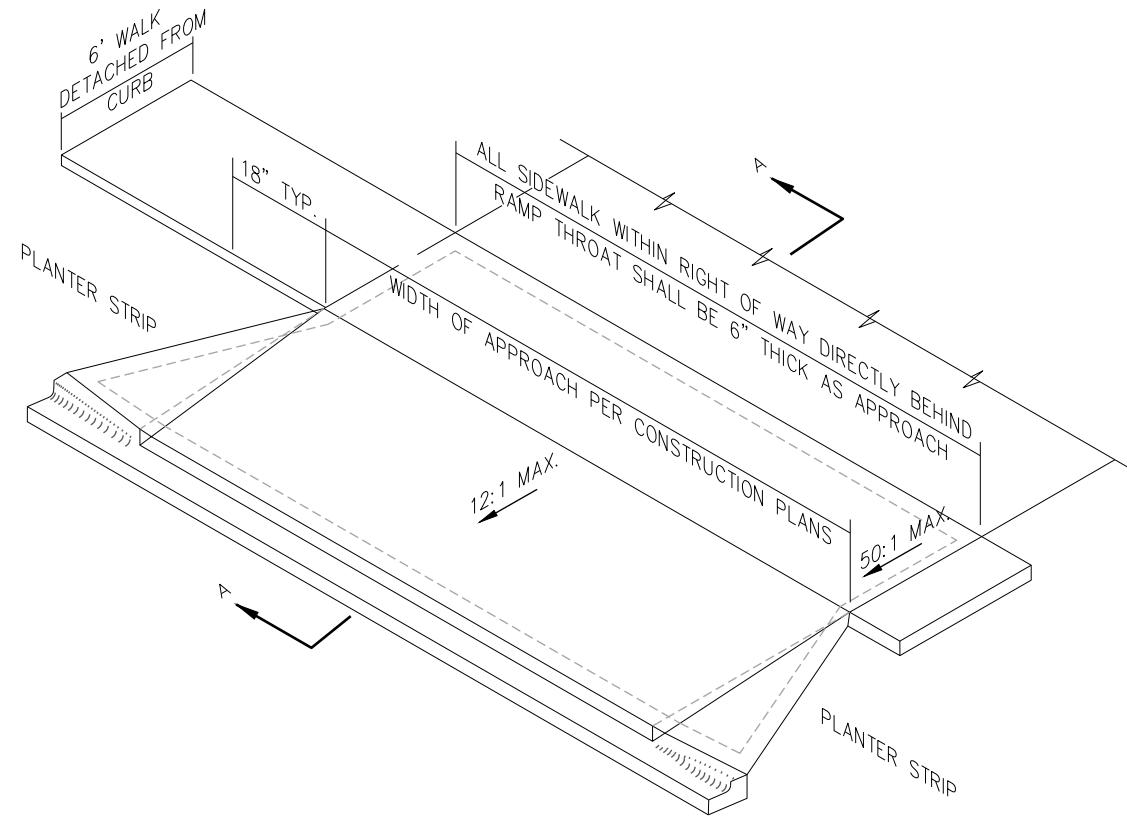
PAY QUANTITY DETAIL

SECTION A-A



PAY QUANTITY DETAIL

SECTION A-A



NOTES:

1. APPROACH TO CONFORM TO THE LATEST ADA STANDARDS.
2. INSTALL EXPANSION JOINT AT TIP OF APPROACH WINGS AND WHERE SIDEWALK CHANGES THICKNESS.
3. BASE TO BE A 4" THICKNESS OF 3/4" MINUS CRUSHED AGGREGATE PER SECTION - 802.
4. APPROACH THROAT WIDTHS SET BY POLICY AND APPLICATION. ALL CONCRETE TO BE 6" THICK FROM TIP OF WING TO TIP OF WING UP TO THE EXPANSION JOINT. WHEN SIDEWALK IS SEPARATE FROM CURB THE SIDEWALK IMMEDIATELY BEHIND THE APPROACH THROAT SHALL BE 6" THICK.
5. ALL CONCRETE SHALL BE CLASS 3000 PER SECTION - 703.
6. SIDEWALK WIDTH MAY VARY.
7. PAY QUANTITIES FOR URBAN APPROACHES SHALL INCLUDE THE APPROACH RAMP/DRIVEWAY AREA (TO INCLUDE SIDEWALK BEHIND APPROACH) AND THE APPROACH FLARES/WINGS.
8. 1/2" REBAR @ 18" O.C. BOTH WAYS IN 6" APRON & SIDEWALK IS REQUIRED, OR EQUIVALENT AS DETERMINED BY CITY.

CITY OF SANDPOINT STANDARD APPROACH TYPE A

N.T.S

NOTES:

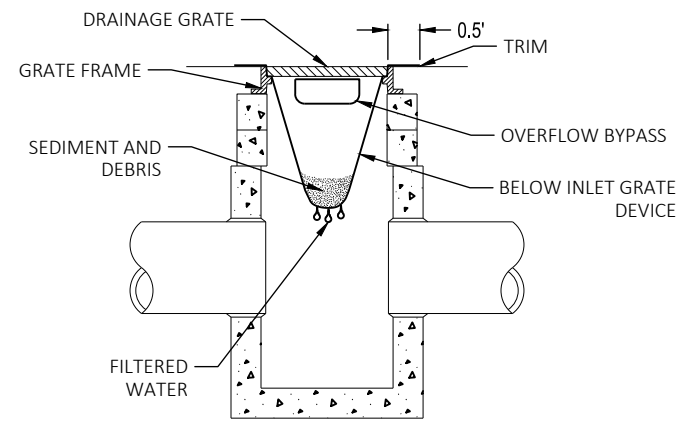
1. APPROACH TO CONFORM TO THE LATEST ADA STANDARDS.
2. INSTALL EXPANSION JOINT AT TIP OF APPROACH WINGS AND WHERE SIDEWALK CHANGES THICKNESS.
3. BASE TO BE A 4" THICKNESS OF 3/4" MINUS CRUSHED AGGREGATE PER SECTION - 802.
4. APPROACH THROAT WIDTHS SET BY POLICY AND APPLICATION. ALL CONCRETE TO BE 6" THICK FROM TIP OF WING TO TIP OF WING UP TO THE EXPANSION JOINT.
5. ALL CONCRETE SHALL BE CLASS 3000 PER SECTION - 703.
6. SIDEWALK WIDTH MAY VARY.
7. PAY QUANTITIES FOR URBAN APPROACHES SHALL INCLUDE THE APPROACH RAMP/DRIVEWAY AREA (TO INCLUDE SIDEWALK BEHIND APPROACH) AND THE APPROACH FLARES/WINGS.
8. 1/2" REBAR @ 18" O.C. BOTH WAYS IN 6" APRON & SIDEWALK IS REQUIRED, OR EQUIVALENT AS DETERMINED BY CITY.

CITY OF SANDPOINT STANDARD APPROACH TYPE B

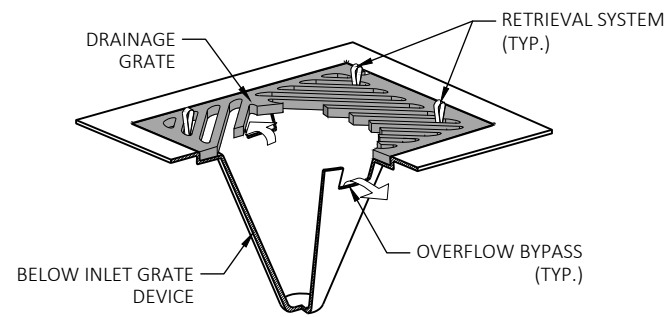
N.T.S

NOTES:

1. PLACE FILTER FABRIC BELOW THE GRATE WITH 0.5' MINIMUM TUCKED AROUND GRATE SIDES TO ENSURE THAT THE FILTER FABRIC IS SECURE.
2. SIZE THE BELOW INLET GRATE DEVICE (BIGD) FOR THE STORM WATER STRUCTURE IT WILL SERVICE.
3. THE BIGD SHALL HAVE A BUILT-IN HIGH-FLOW RELIEF SYSTEM (OVERFLOW BYPASS).
4. THE RETRIEVAL SYSTEM MUST ALLOW REMOVAL OF THE BIGD WITHOUT SPILLING THE COLLECTED MATERIAL.
5. PERFORM MAINTENANCE IN ACCORDANCE WITH BEST PRACTICES.



CATCH BASIN/INLET



**BELOW INLET GRATE
DEVICE DETAIL**

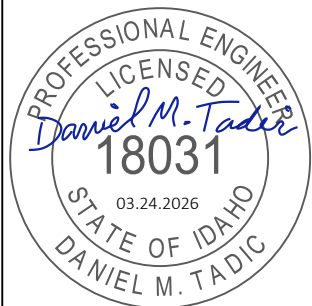
TYPICAL INLET PROTECTION

NOT TO SCALE



476864 Highway 95, Suite 3
Ponderay, ID 83852
(208) 635-5825

DIVISION AVE. CORRIDOR
IMPROVEMENTS PHASE 2
CITY OF SANDPOINT, IDAHO
BONNER COUNTY
DETAILS



CONSTRUCTION
DRAWINGS

1"
SCALE: (11X17 ONLY)

PROJECT NO: GS025-17
DRAWN BY: C. SMITH
CHECKED BY: D. TADIC
DATE: 03.24.2026

© 2026 HMH ENGINEERING

REVISIONS

NO.	DATE	DESCRIPTION

DRAWING:

13

SHEET: 13 OF 13

PLOT DATE: 3/24/2026 6:45 PM PLOTTED BY: DRAKE SCOTT
LAYOUT: DTL 2 PATH: Z:\DOCUMENTS\PROJECTS\2025\GS025-17\CITY OF SANDPOINT ENGINEERING SERVICES\DIVISION AVE IMPROVEMENTS PH 2\CAD\PLAN SHEETS\GS025-17 DTL.DWG

