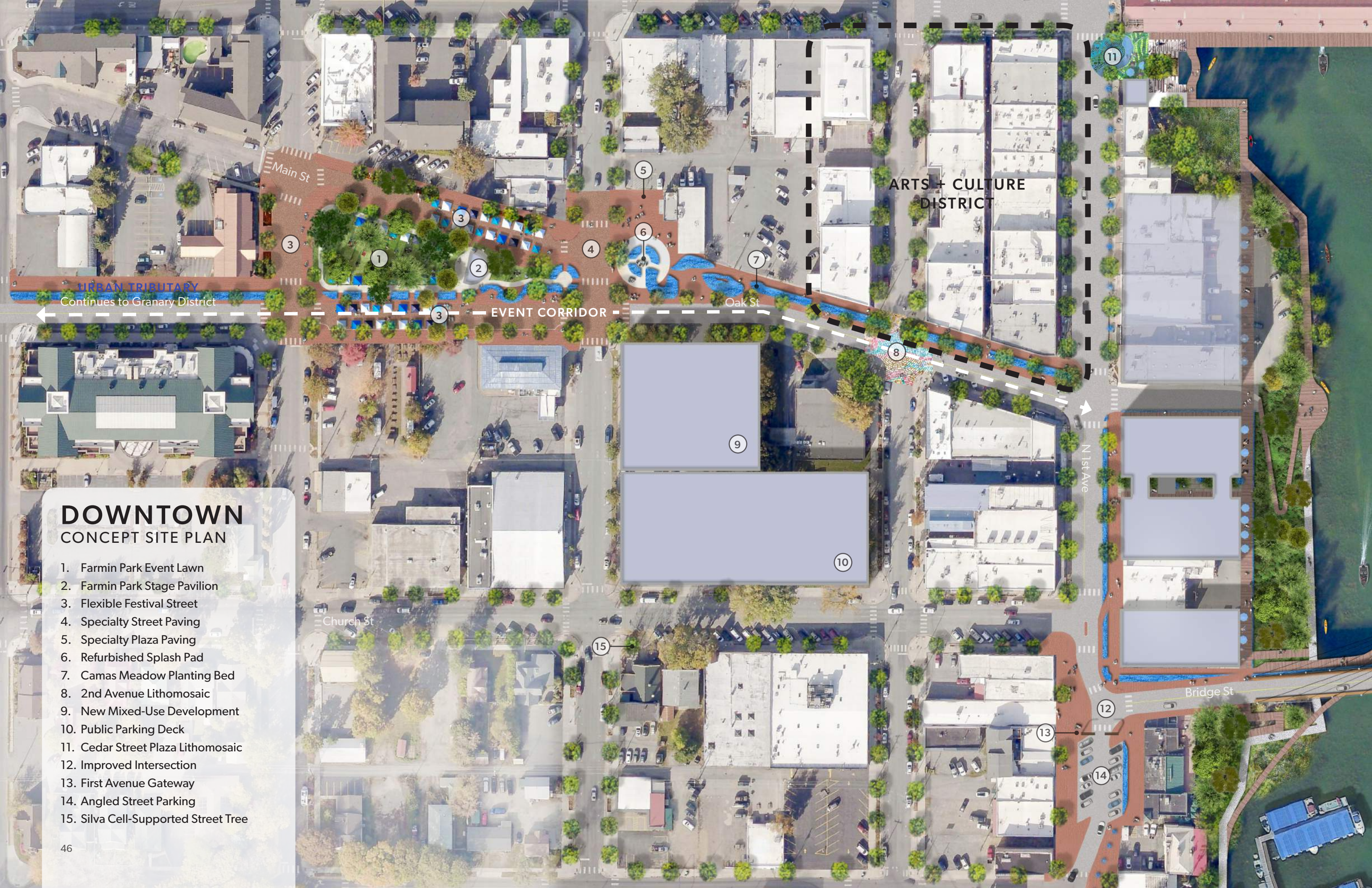


THE BLUE NECKLACE CONCEPT SITE PLAN

1. Farmin Park Expansion
2. 'Urban Tributary' Camas Path
3. New Mixed-Use Development
4. Public Parking Deck
5. Cedar Street Terrace
6. Farmin's Landing Enhancements
7. First Avenue Gateway
8. Improved Intersection
9. Bridge Concept
10. Water Trail
11. Carousel
12. Constructed Island
13. Underpass Enhancements
14. Bridge Street Hotel
15. Lions Emerging Artist Plaza
16. Non-motorized Boat Launch
17. Boat House
18. Nature Playscape

19. ADA-Accessible Water Entry Ramp
20. Boat Trailer Parking
21. Ice Ribbon/Roller Sports Course
22. Event Pavilion
23. Great Lawn
24. Swim Dock
25. Sand Volleyball Courts
26. Tennis and Pickle Ball Courts
27. Community Forest
28. Native Pollinator Meadow
29. Picnic Pavilions
30. Restored Point



URBAN TRIBUTARY
Continues to Granary District

ARTS + CULTURE
DISTRICT

EVENT CORRIDOR

Oak St

N 1st Ave

Bridge St

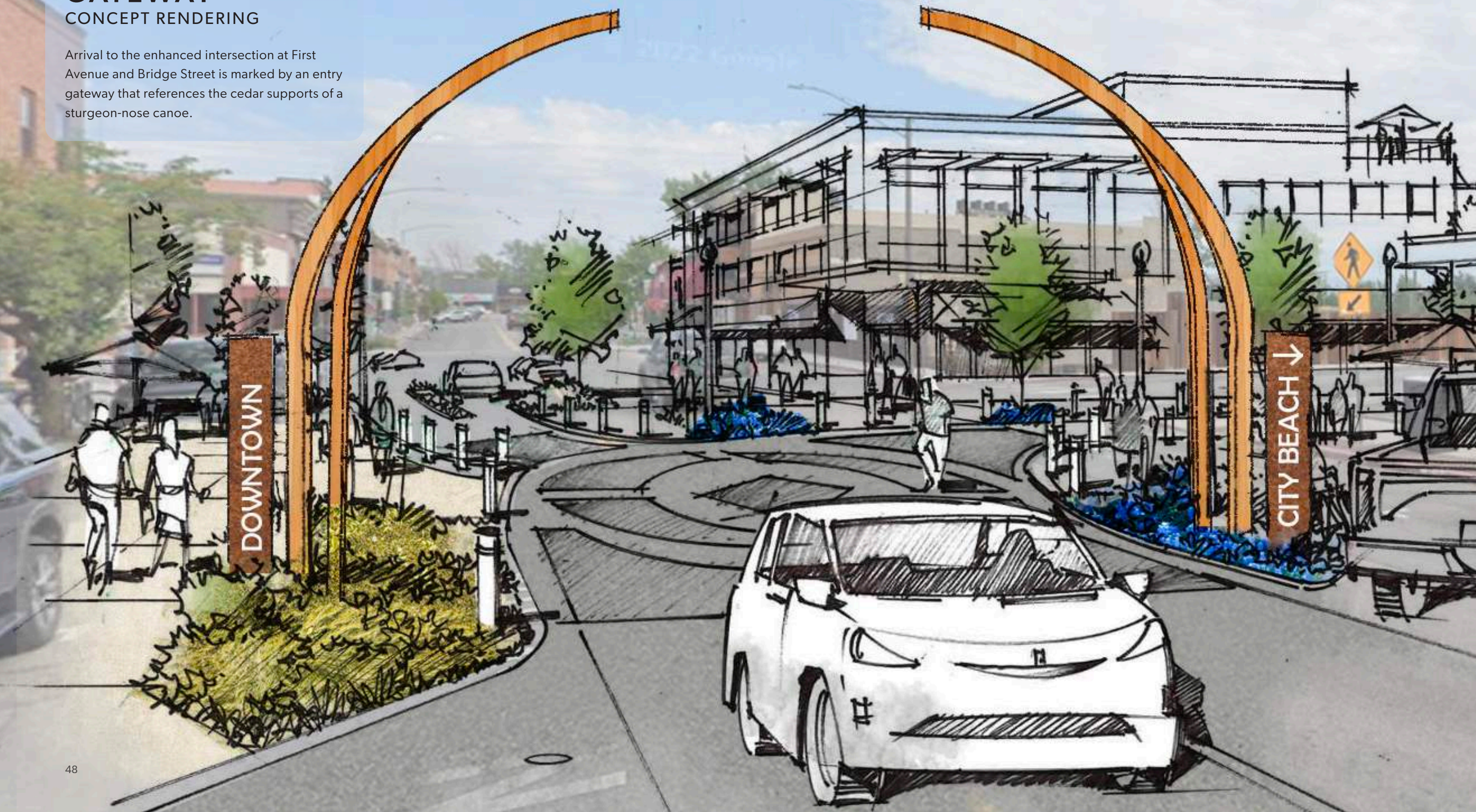
DOWNTOWN CONCEPT SITE PLAN

- 1. Farmin Park Event Lawn
- 2. Farmin Park Stage Pavilion
- 3. Flexible Festival Street
- 4. Specialty Street Paving
- 5. Specialty Plaza Paving
- 6. Refurbished Splash Pad
- 7. Camas Meadow Planting Bed
- 8. 2nd Avenue Lithomosaic
- 9. New Mixed-Use Development
- 10. Public Parking Deck
- 11. Cedar Street Plaza Lithomosaic
- 12. Improved Intersection
- 13. First Avenue Gateway
- 14. Angled Street Parking
- 15. Silva Cell-Supported Street Tree

FIRST AVENUE GATEWAY

CONCEPT RENDERING

Arrival to the enhanced intersection at First Avenue and Bridge Street is marked by an entry gateway that references the cedar supports of a sturgeon-nose canoe.





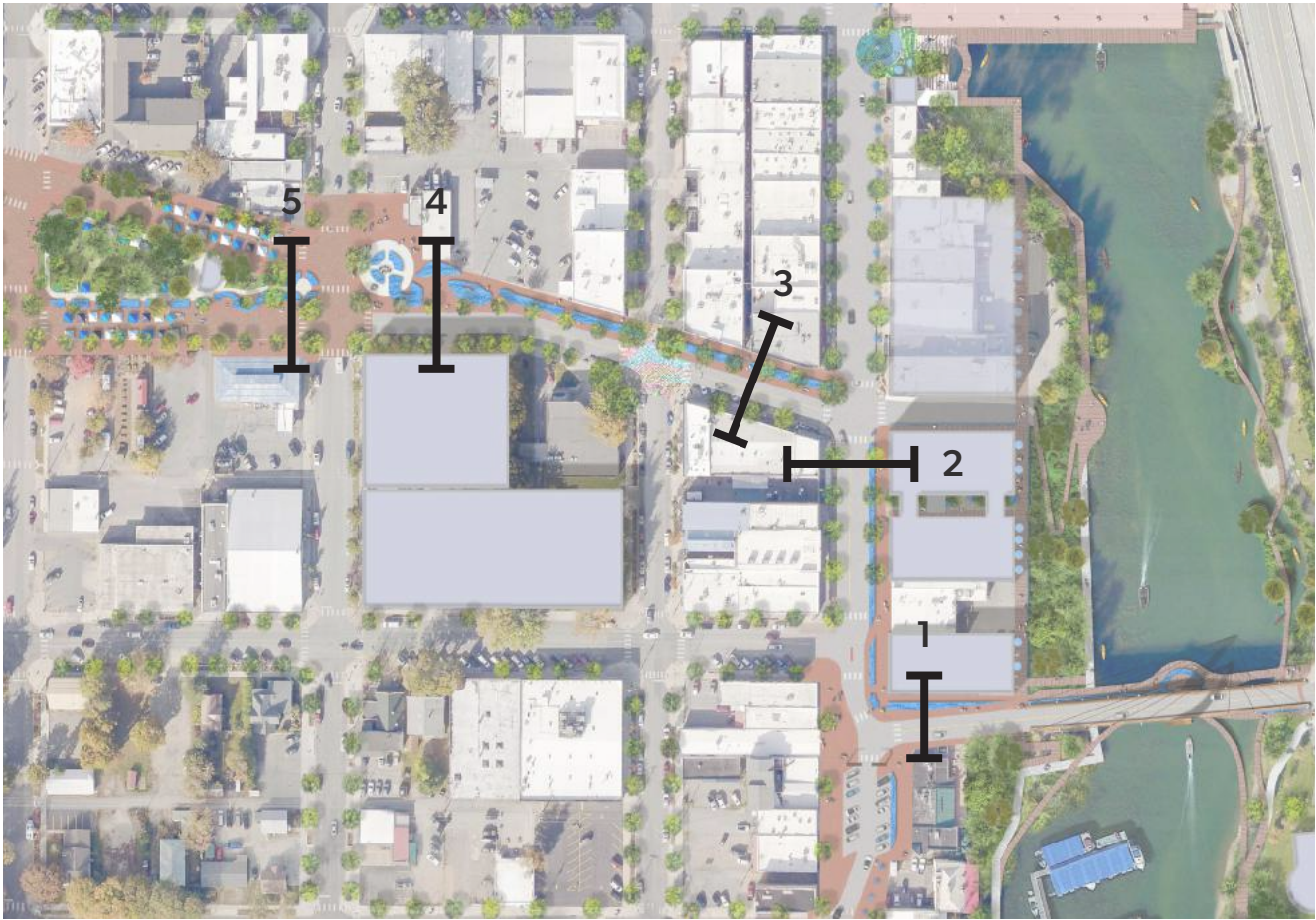
URBAN TRIBUTARY

DOWNTOWN CONCEPT DESIGN

The Blue Necklace manifests itself in the form of an art- and nature-centered path that weaves through Sandpoint. This path becomes an urban tributary — a mechanism that harnesses Sandpoint’s creative energy, binding the Downtown together through an expression of nature, art, and light. This urban tributary is conceived as an experience for all ages and abilities, leading through town from the Granary District all the way to the point at City Beach.

The path is conceptualized as a wide, multi-use path for use by both pedestrians and casual cyclists. Lining the path is a carefully selected

palette of native plantings. We recommend working with the Kalispel Tribe’s native plant nursery to implement what would consist of a range of native camas prairie plantings to create a consistent and wild nature intervention stretching through town. Blooming a beautiful blue in the springtime with a multitude of wildflowers, the tributary will showcase a traditional food source vital to the indigenous peoples of this region, the camas. In spring, the camas could be harvested in a festival setting, building a stronger connection between the town and its history.



1. Bridge Street Section
2. First Avenue Section
3. Oak Street Section
4. Oak Street Section at Plaza
5. Oak Street Section at Farmin Park

On the following pages, representative street sections are provided to convey the design intent for the urban tributary as it weaves through Downtown. The sections are numbered and correspond to the map shown above. A representative section depicting the current existing condition is provided for each as a reference point.

Consistent across each of the sections is a multi-use pathway featuring specialty paving to differentiate it from a typical sidewalk. Plantings line the pathway and are accommodated in either at-grade planting beds or raised planters

depending on the context. At-grade planters provide stormwater retention and purification benefits, while raised planters can help create a stronger barrier between the pedestrian and vehicular zones while also providing opportunity for integrated seating and closer interaction with the plantings themselves, a desirable condition for camas plantings intended for harvest.

Specialty lighting, art features, and interpretive signage that tell the story of Sandpoint are integrated throughout the urban tributary.

2 FIRST AVENUE
EXISTING SECTION



2 FIRST AVENUE
CONCEPT SECTION

Existing
Building





SAND CREEK CONCEPT SITE PLAN

1. Cedar Street Terrace
2. Mixed-Use Development with Creek Frontage
3. Elevated Public Walkway
4. Restored Riparian Habitat
5. Refurbished Farmin's Landing
6. Constructed Island
7. Constructed Play Channel
8. Pedestrian Crossing
9. Grade-Separated Vehicular Crossing
10. Constructed Wetland
11. Lake Street Pedestrian Improvements
12. Cyclist and Pedestrian Bridge
13. Boardwalk Connection to City Beach
14. Carousel
15. Non-Motorized Watercraft Launch
16. Enhanced Underpass





PHASE 1

2024 - 2028

- 1. Bridge St Enhancements
- 2. Phase 3 Revitalization First Ave Enhancements
- 3. Phase 4 Revitalization First Ave Enhancements
- 4. Farmin's Landing Enhancements Phase 1
- 5. Cedar Street Terrace
- 6. Sand Creek Boardwalk Extension
- 7. Constructed Wetland I
- 8. City Parking Lot Redevelopment
- 9. City Beach Enhancements Phase 1
- 10. Water Trail Implementation