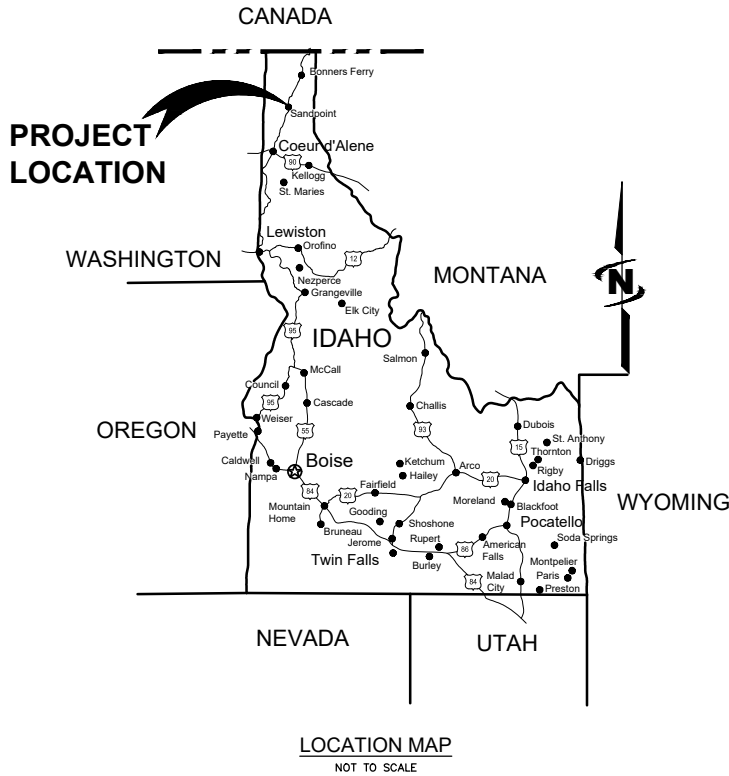
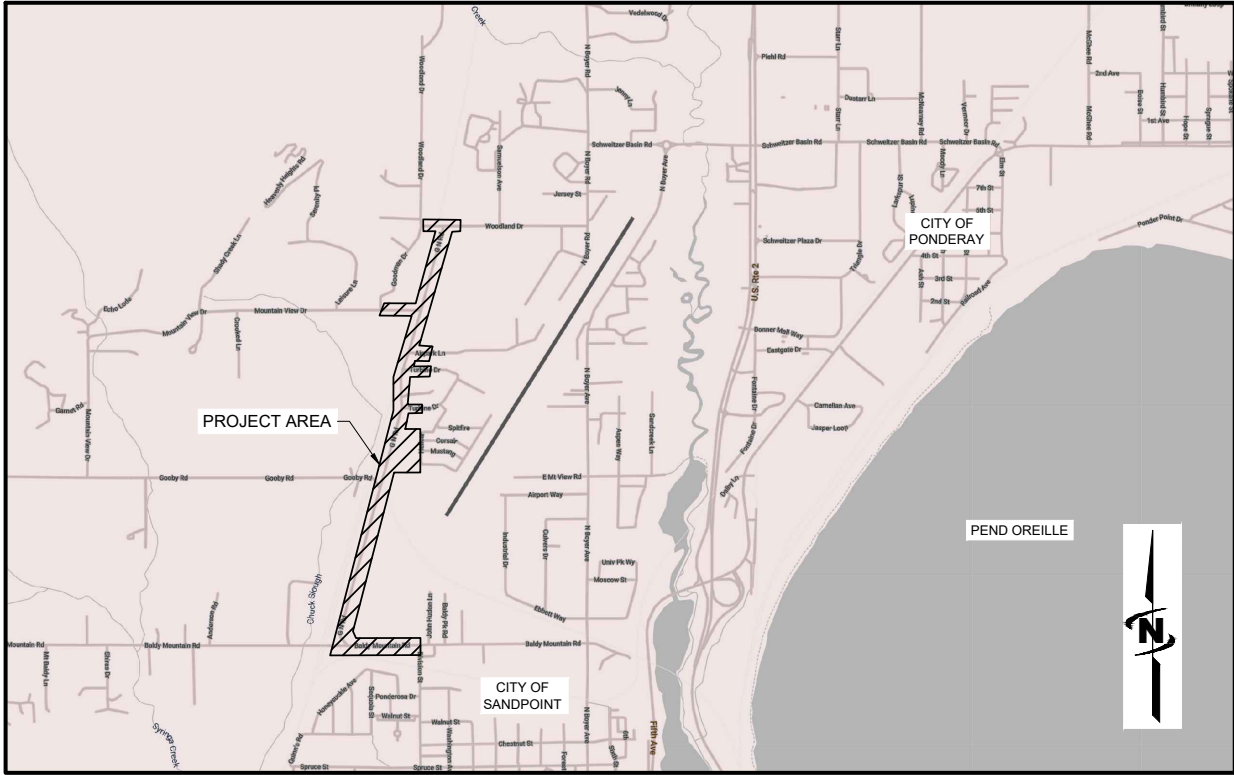


GREAT NORTHERN ROAD

CITY OF SANDPOINT, ID

2025 Design Alternatives

PRELIMINARY PLANS
NOT FOR CONSTRUCTION



INDEX OF SHEETS

SHEET COUNT	SHEET NUMBER	SHEET TITLE
GENERAL		
1	G-001	TITLE SHEET
2 - 3	G-002 - G-003	GENERAL NOTES
4	G-004	DRAWING MANAGEMENT
5	G-005	GENERAL SYMBOLS
SURVEY		
6	V-101	TOPOGRAPHIC SURVEY KEY MAP
7 - 22	V-102 - V-117	TOPOGRAPHIC SURVEY
CIVIL		
23	C-001	KEY MAP
24 - 40	RM-101 - RM-117	REMOVAL PLAN
41 - 42	TY-101 - TY-102	TYPICAL SECTION
43 - 72	PP-101 - PP-130	ROADWAY PLAN AND PROFILE
73	RD-101	ROADWAY DETAILS
74	RD-201	RAILROAD DETAILS
76 - 106		
76 - 106	WS-101 - WS-131	WATER AND SEWER - PLAN AND PROFILE
	TBD	WATER AND SEWER - DETAILS
107 - 124	DR-101 - DR-118	DRAINAGE PLAN
125 - 141	DR-201 - DR-217	DRAINAGE PROFILE
142 - 144	DR-301 - DR-303	DRAINAGE DETAILS
145 - 161	ES-101 - ES-117	EROSION AND SEDIMENTATION CONTROL PLAN
162 - 178	IL-101 - IL-117	ILLUMINATION PLAN
179 - 195	UT-101 - UT-117	UTILITY PLANS
196 - 212	SS-101 - SS-117	SIGNING AND PAVEMENT MARKINGS
213	SS-200	SIGNING AND STRIPING DETAILS
214 - 216	TC-101 - TC-103	TRAFFIC CONTROL - DETOUR PLAN
217 - 219	TC-201 - TC-203	TRAFFIC CONTROL - PHASING PLAN
220 - 221	TC-301 - TC-302	TRAFFIC CONTROL - DETAILS



Know what's below.
Call before you dig.

CALL 2 BUSINESS DAYS IN ADVANCE BEFORE YOU DIG, GRADE, OR EXCAVATE FOR THE MARKING OF UNDERGROUND MEMBER UTILITIES

REUSE OF DOCUMENTS

J-U-B grants to CLIENT a nonexclusive, non-transferable license to use the Drawings, Specifications and/or Contract Documents (Documents) as follows:

CLIENT may make and retain copies of the Documents for reference, but J-U-B shall retain all common law, statutory and other reserved rights, including the copyright thereto, and the same shall not be reused on this Project or any other Project without J-U-B's prior written consent. Distribution of Documents to meet regulatory or permitting requirements, or for similar purposes, in connection with the Project, including but not limited to distribution to contractors or subcontractors for the performance of their work, is not to be construed as publication adversely affecting the reserved rights of J-U-B. The Documents are not intended for use in creating dtm for grading or earthwork, survey staking layout (unless specifically identified as such in the documents), or property boundary layouts.

Any reuse without written consent by J-U-B, or without verification or adoption by J-U-B for the specific purpose intended by the reuse, will be at CLIENT's sole risk and without liability or legal exposure to J-U-B. The CLIENT shall release, defend, indemnify, and hold J-U-B harmless from any claims, damages, actions or causes of action, losses, and expenses, including reasonable attorneys' and expert fees, arising out of or resulting from such reuse.

If the Documents are provided in electronic format, the electronic documents are subject to the provisions of J-U-B's "electronic document/data limited license" found at edocs.jub.com

LAST UPDATED: 8/11/2024
SHEET: 1
DRAWING: G-001

PROJECT NO. 07-23-021



J-U-B ENGINEERS, INC.
7825 Meadowlark Way, Coeur d'Alene, ID 83815
p 208 762 8787 w www.jub.com



J-U-B FAMILY OF COMPANIES

60% SUBMITTAL



Plot Date: 8/17/2024 2:11 PM, Plotted By: Brannen Reator
 Date Created: 8/17/2024 10:05 AM, CLIENT: CITY OF SANDPOINT, PROJECT: 07-23-021, GREAT NORTHERN ROAD DESIGN, SHEET: 07-23-021-G-001.DWG

NOTES

1. KEY MAP REFERENCE NUMBER IS SHOWN ON TOP LEFT OF EVERY PLAN VIEW.
2. KEY MAP IS FOR INFORMATION ONLY.
3. THE VIEWS SHOWN MAY NOT EXIST FOR EVERY PLAN GROUP IF THERE IS NO RELEVANT INFORMATION.
4. PLAN VIEWS MAY DIFFER FROM KEY NOTE MAP BASED ON WHAT IS NEEDED FOR DESIGN.
5. FOR ALIGNMENT INFORMATION SEE PLAN AND PROFILE SHEETS.



J-U-B ENGINEERS, INC.

J-U-B ENGINEERS, INC.
7825 Meadowlark Way
Coeur d'Alene, ID 83815
Phone: 208.762.8787
www.jub.com

PRELIMINARY
PLANS
NOT FOR
CONSTRUCTION

REUSE OF DRAWINGS
JUB SHALL RETAIN ALL COMMON LAW, STATUTORY, COPYRIGHT AND OTHER RIGHTS IN THIS DRAWING. NO PART OF THIS DRAWING SHALL NOT BE REUSED WITHOUT WRITTEN CONSENT BY JUB. ANY REUSE WITHOUT WRITTEN CONSENT BY JUB WILL BE AT CLIENTS SOLE RISK AND WITHOUT LIABILITY OR LEGAL EXPOSURE TO JUB.

NO.	REVISION	DESCRIPTION	BY	APPR.	DATE

GREAT NORTHERN ROAD
CITY OF SANDPOINT, ID
KEY MAP

FILE: 07-23-021_KY-10X
JUB PROJ. #: 07-23-021
DRAWN BY: BPRR
DESIGN BY: BJM
CHECKED BY: KPS
AT FULL SIZE, IF NOT ONE INCH SCALE ACCORDINGLY
LAST UPDATED: 6/7/2024
DRAWING: C-001
SHEET: 23 OF 221

Plot Date: 6/17/2024 2:18 PM. Plotted By: Brannen Reator
 Date Created: 6/24/2024. JUB: C:\CENTRAL\CLIENTS\SANDPOINT\CITY PROJECTS\07-23-021_GREAT NORTHERN ROAD\DESIGN\KEYMAP\07-23-021_KY-10X.DWG

