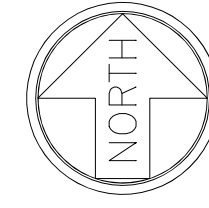


SKYWAY ESTATES RRELIMINARY PLAT

A PORTION OF LOT 15 OF A SUBDIVISION OF SECTION 10 LOCATED IN THE NW1/4
OF THE SE1/4 OF SECTION 10, TOWNSHIP 57 NORTH, RANGE 2 WEST, B.M.,
CITY OF SANDPOINT, BONNER COUNTY, IDAHO

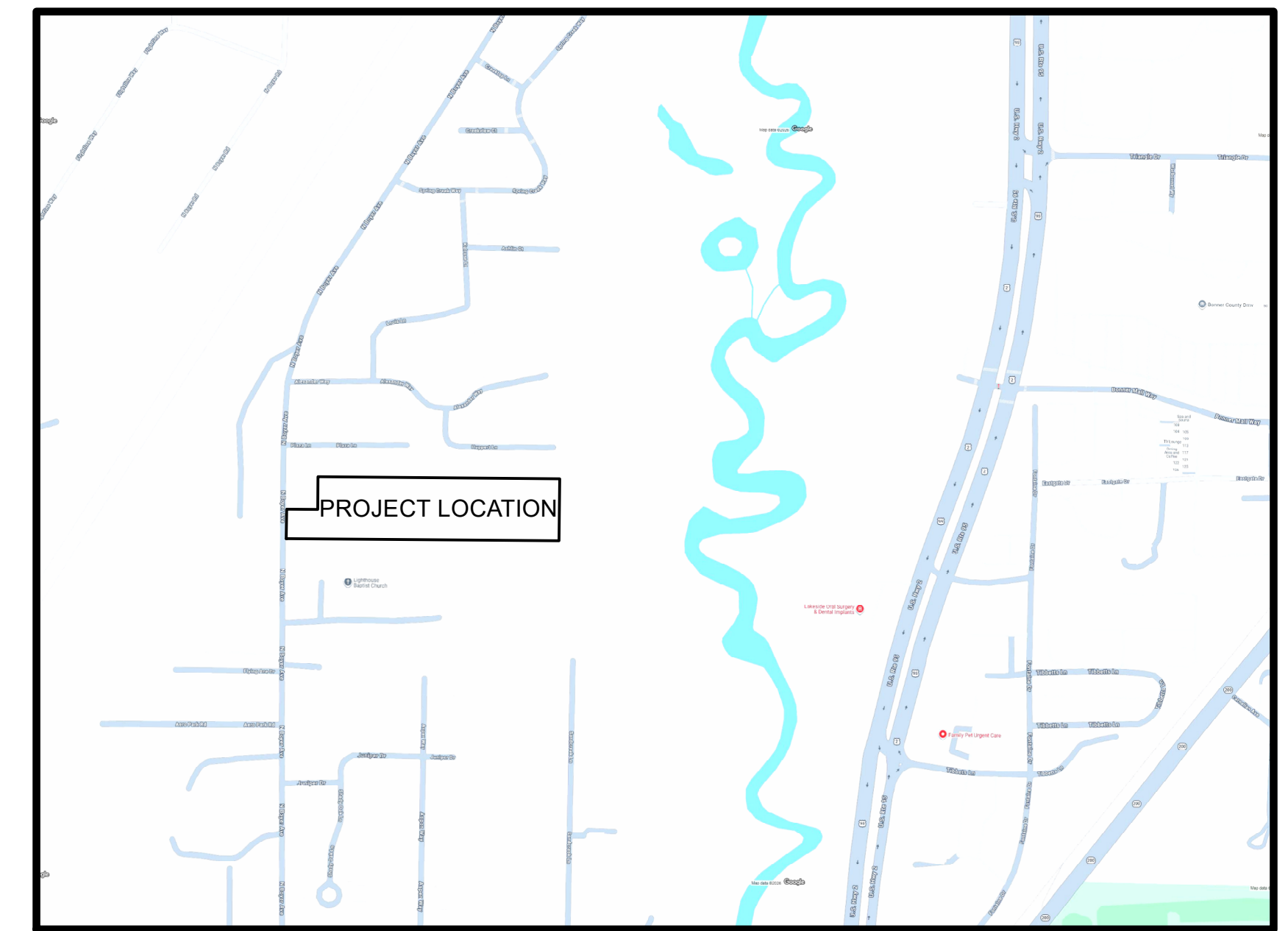


NOTES:

- 1) ELEVATION DATUM IS NAVD88
- 2) BENCHMARK IS A CHISELED SQUARE AT TBC EAST SIDE OF BOYER ROAD AT PROJECT FRONTAGE. SEE PLAN VIEW
- 3) NO WETLANDS ARE PRESENT ON SITE.
- 4) FEMA - SITE IS NOT LOCATED IN A FLOOD HAZARD ZONE.
- 5) LOTS ARE FOR USES CONSISTENT WITH ZONING.
- 6) ALL STREETS SHOWN HEREON ARE PROPOSED FOR PUBLIC DEDICATION AND AN ADDITIONAL 10' DEDICATION ALONG BOYER ROAD.

PLAT STATISTICS:

- 1) PARCEL NO. = RPS00000108290A
 - 2) PARENT PARCEL AREA = 4.58 ACS.
 - 3) PROPOSED WATER = CITY OF SANDPOINT
 - 4) PROPOSED SOLID WASTE = COUNTY TRANSFER
 - 5) FIRE PROTECTION = CITY OF SANDPOINT
- ZONING = RS (RESIDENTIAL SINGLE FAMILY)



VICINITY MAP
1"=500'

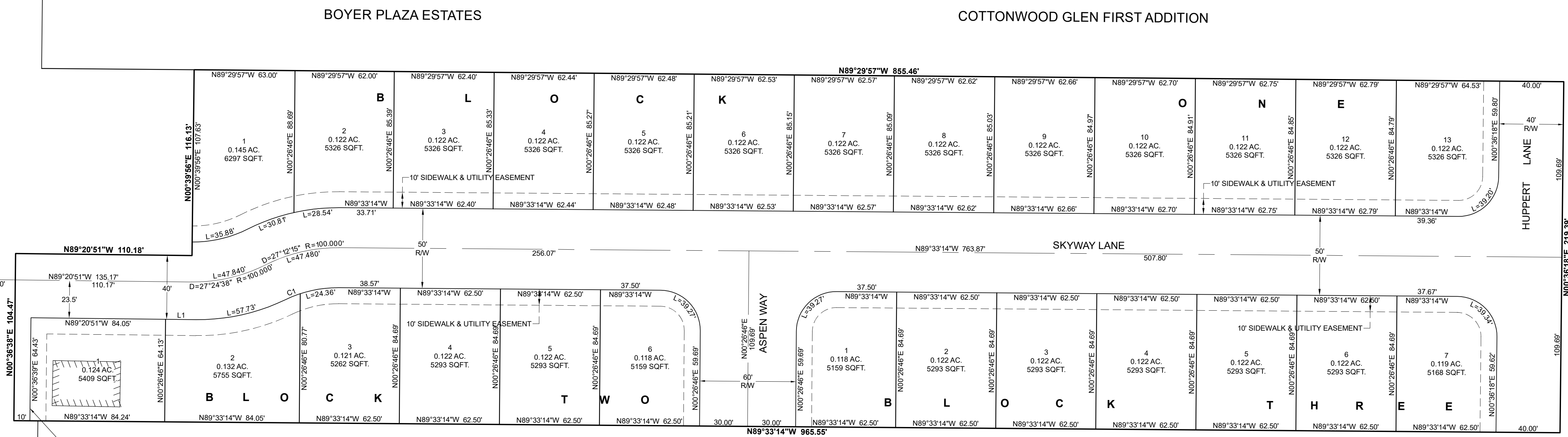
03
10

10
15

BOYER ROAD

UNPLATTED

UNPLATTED



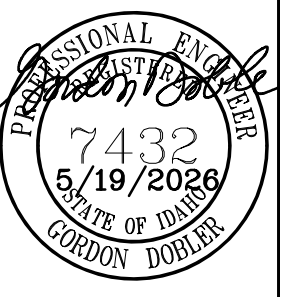
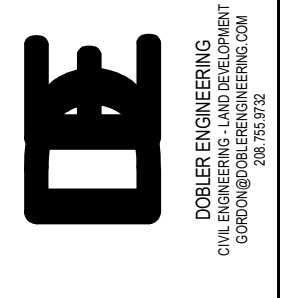
UNPLATTED

UNPLATTED

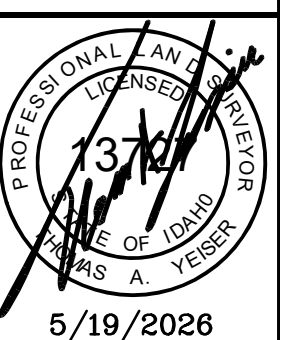
CURVE#	LENGTH	RADIUS	DELTA ANGLE	CHORD	LC BRG
C1	10.01	75.00'	7°38'43"	10.00'	N68°00'48"E

LINE#	BEARING	LENGTH
L1	N89°20'51"W	19.05'

NO.	DESCRIPTION	INITIALS	DATE
1	40' R/W EAST END		5/19/2026



PRELIMINARY PLAT
SKYWAY ESTATES

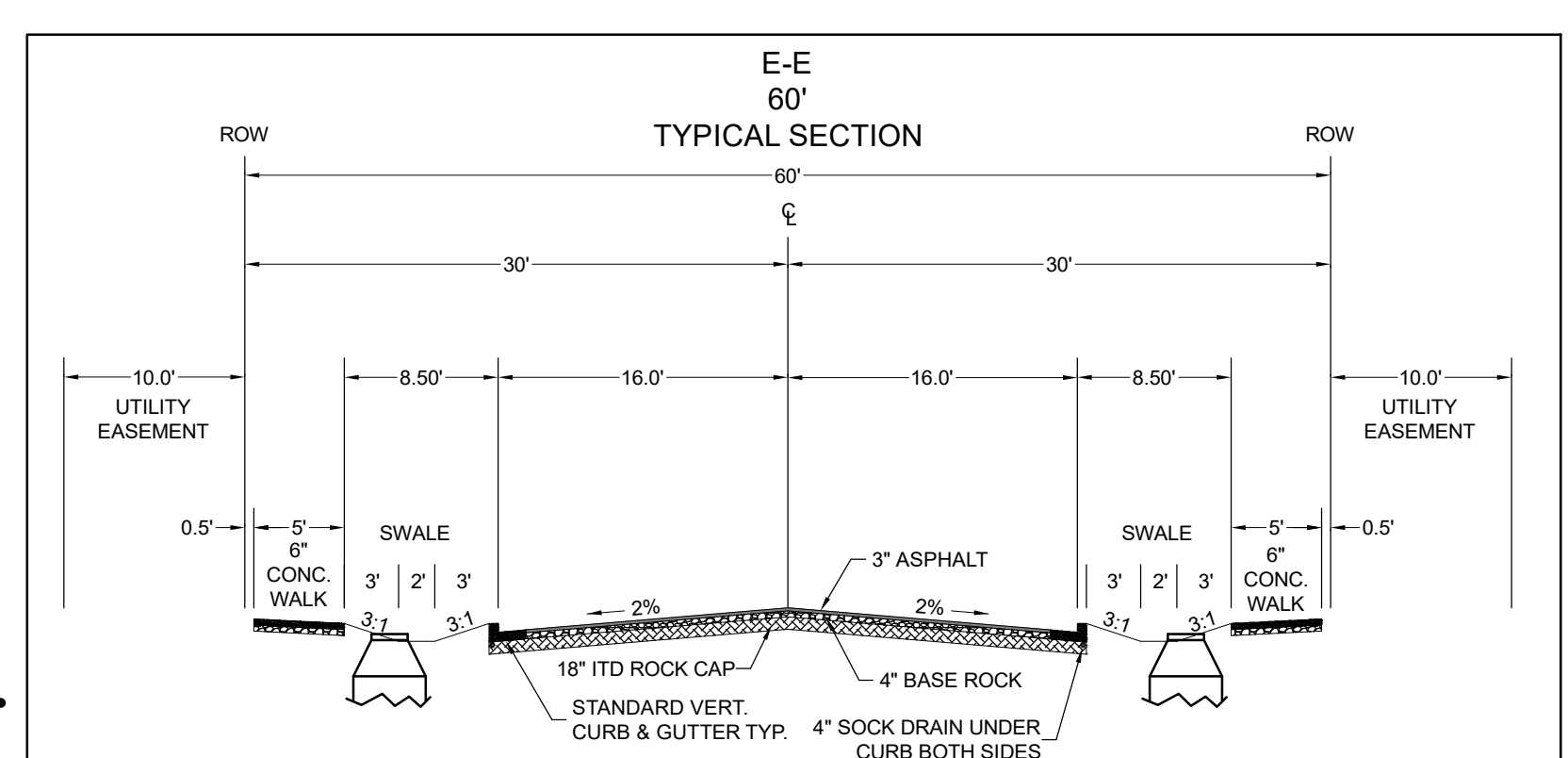
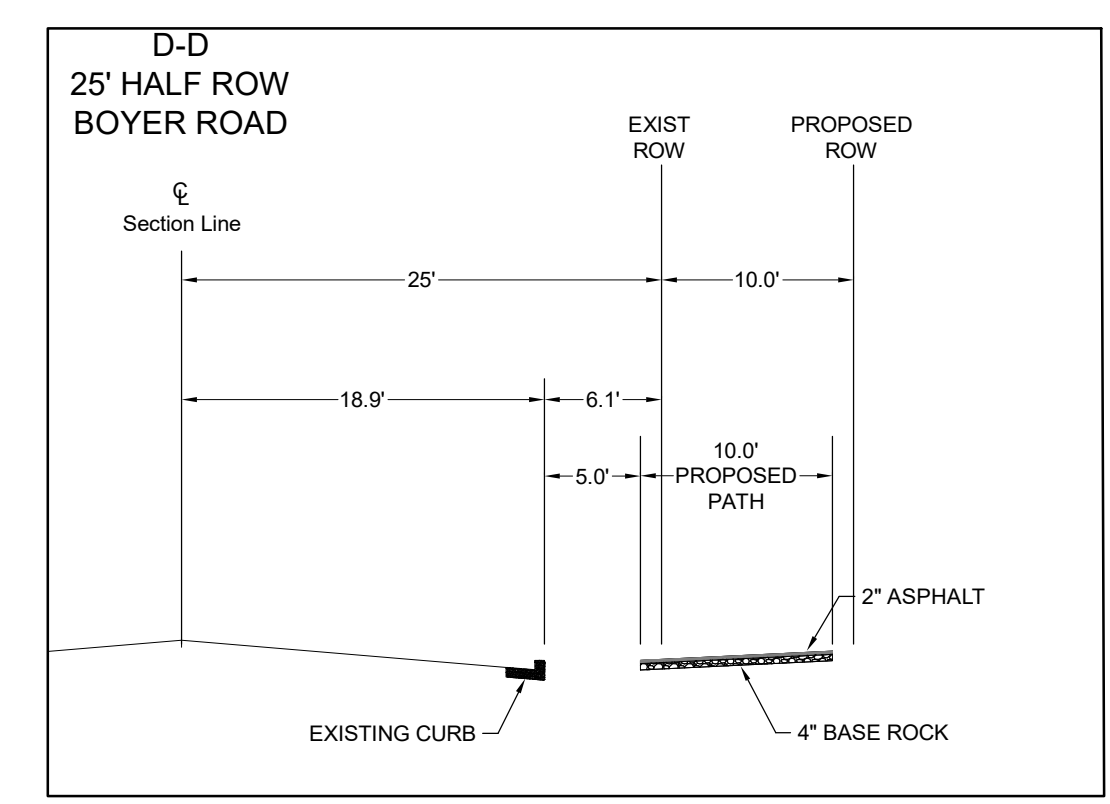
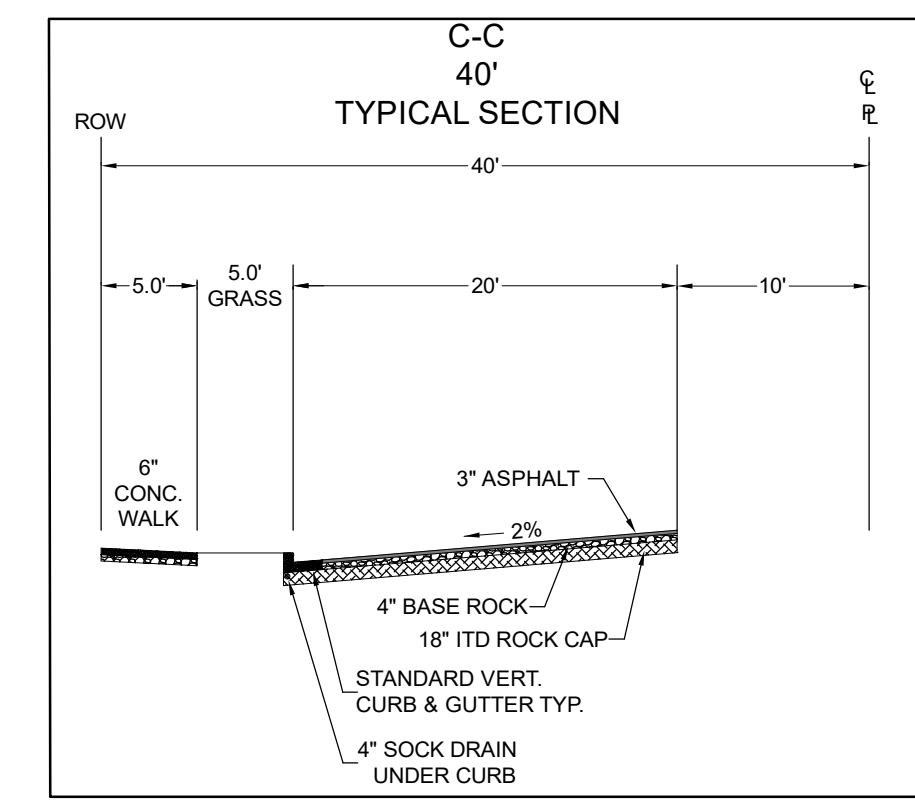
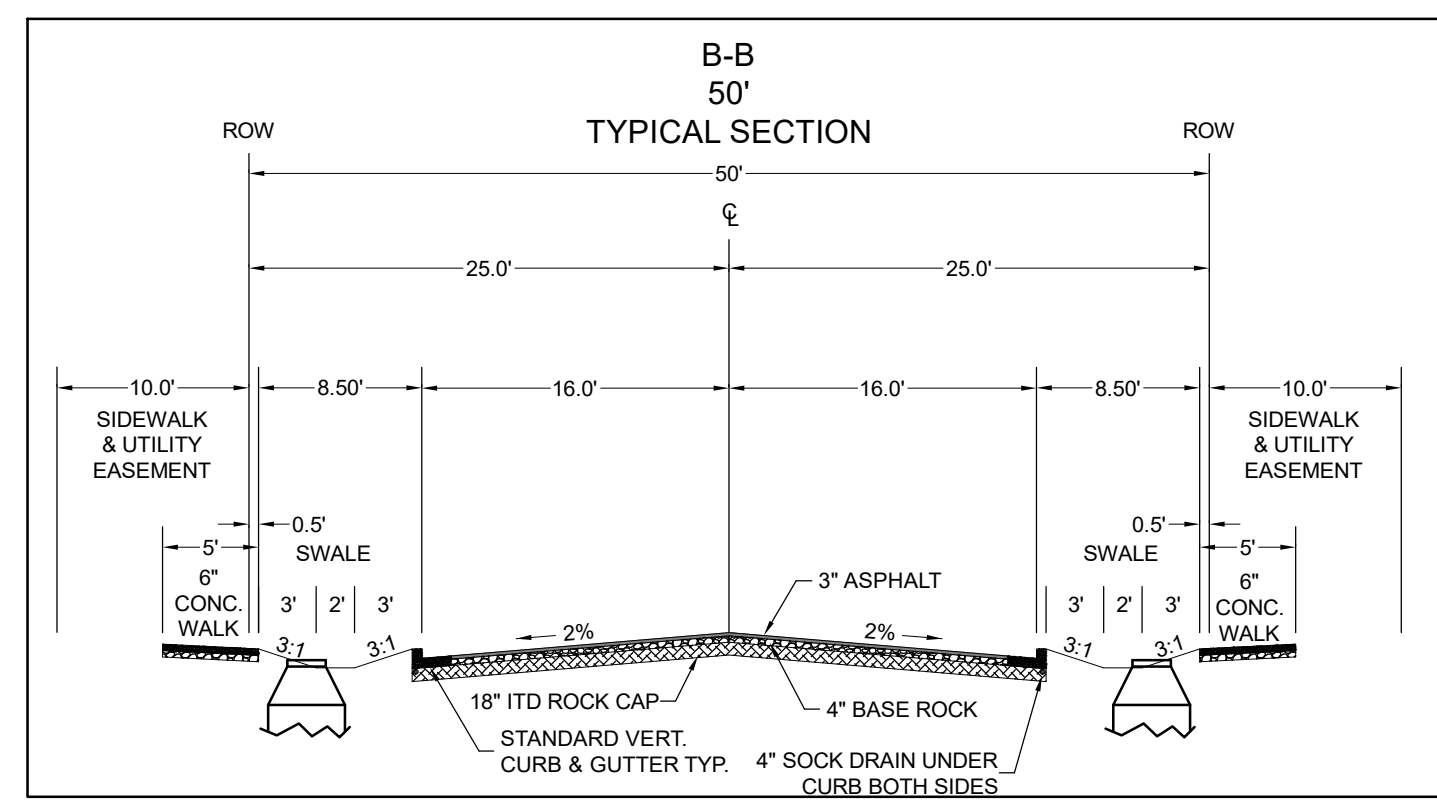
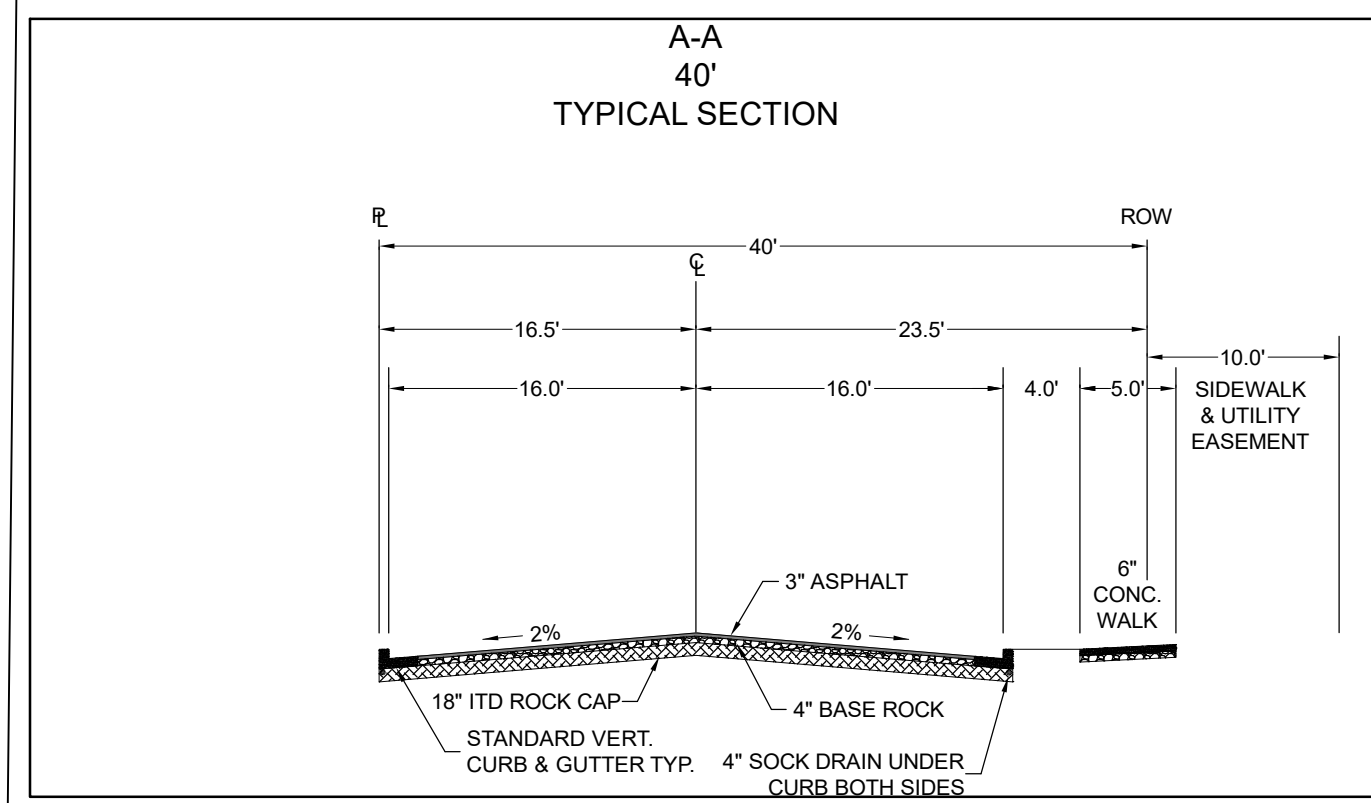
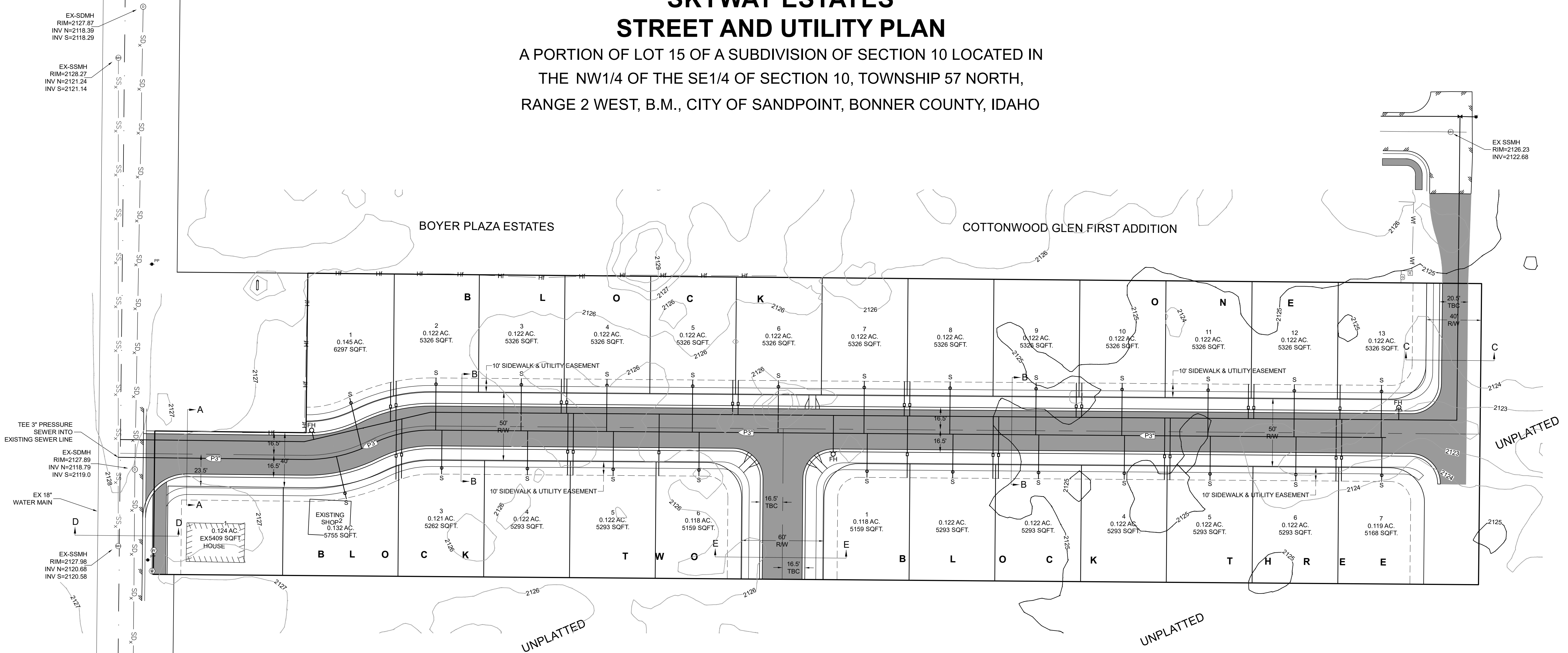


DESIGNED BY: GD
DRAFTED BY: TY
CHECKED BY: GD
DATE: 5/19/2026
JOB No.: 2541

SHEET
1

SKYWAY ESTATES STREET AND UTILITY PLAN

A PORTION OF LOT 15 OF A SUBDIVISION OF SECTION 10 LOCATED IN
THE NW1/4 OF THE SE1/4 OF SECTION 10, TOWNSHIP 57 NORTH,
RANGE 2 WEST, B.M., CITY OF SANDPOINT, BONNER COUNTY, IDAHO



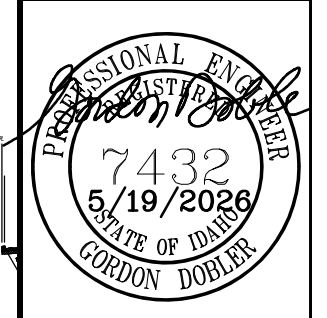
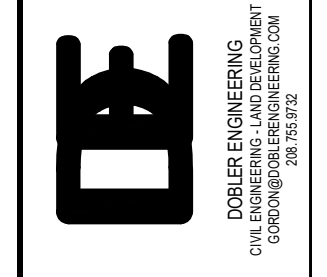
LEGEND

- ☐ TRANSFORMER
- ⦿ POWER POLE
- ⊕ GAS STUB
- ⊙ SEWER MANHOLE
- ⊙ STORM MANHOLE
- ⊙ CATCH BASIN
- ⊙ WATER METER
- ⊙ WATER VALVE
- ⊙ HYDRANT
- SS_x SEWER PIPE
- HF HOGWIRE FENCE
- WF WOOD FENCE
- SD_x STORM PIPE
- P3_x PROPOSED 3" PRESSURE SEWER

NOTES:
1) ELEVATION DATUM IS NAVD88
2) BENCHMARK IS A CHISLED SQUARE AT TBC EAST SIDE OF BOYER ROAD AT PROJECT FRONTAGE, SEE PLAN VIEW

STREET AND UTILITY PLAN
SCALE 1" = 40'

REVISION BLOCK		NO.	DESCRIPTION	DATE
1	INITIALS	TY		5/19/2026
2	TY			
3	TY			
4	TY			
5	TY			



STREET AND UTILITY PLAN
SKYWAY ESTATES

DESIGNED BY: GD
DRAFTED BY: TY
CHECKED BY: GD
DATE: 5/19/2026
JOB No.: 2541

SHEET
2