

RIDLEY VILLAGE COURT TOWN HOMES

LANDSCAPE DRAWINGS

SHEET INDEX

- L0.0 COVER SHEET & GENERAL NOTES
- L1.0 NORTH SITE PLAN
- L1.1 SOUTH SITE PLAN
- L1.2 SITE DETAIL SHEET
- L1.3 SITE DETAIL SHEET
- L2.0 TREE PLANTING PLAN & DETAILS
- L2.1 NORTH PLANTING PLAN
- L2.2 SOUTH PLANTING PLAN
- L2.3 PLANTING DETAILS
- L3.0 OVERALL IRRIGATION PLAN

GENERAL LANDSCAPE NOTES

- THE LANDSCAPE ARCHITECTURAL PLANS ARE TO BE USED IN CONJUNCTION WITH THE CIVIL, IRRIGATION, MECHANICAL, ELECTRICAL, AND ARCHITECTURAL SITE PLANS TO FORM COMPLETE INFORMATION REGARDING THE SITE.
- LANDSCAPE CONSTRUCTION SHALL CONFORM TO ALL APPLICABLE STATE AND LOCAL CODES AND SPECIFICATIONS.
- ALL MATERIAL AND WORKMANSHIP SHALL BE MAINTAINED AND GUARANTEED FOR A PERIOD OF 12 MONTHS FOLLOWING THE SUBSTANTIAL COMPLETION DATE.
- LANDSCAPE CONTRACTOR SHALL EXAMINE THE SITE CONDITIONS UNDER WHICH THE WORK IS TO BE PERFORMED, NOTIFY THE GENERAL CONTRACTOR IN WRITING OF UNSATISFACTORY CONDITIONS. DO NOT PROCEED UNTIL CONDITIONS HAVE BEEN CORRECTED.
- BEFORE COMMENCING WORK, LANDSCAPE CONTRACTOR SHALL CONTACT APPROPRIATE UTILITY COMPANIES FOR UTILITY LOCATIONS, AND COORDINATE WITH GENERAL CONTRACTOR IN REGARD TO LOCATION OF PROPOSED UTILITIES, IRRIGATION SLEEVES, CONDUITS, ETC. CONTRACTOR IS RESPONSIBLE FOR ANY DAMAGE AS A RESULT OF THE LANDSCAPE CONSTRUCTION.
- CONTRACTOR SHALL BE RESPONSIBLE FOR ANY COORDINATION WITH SUBCONTRACTORS AS REQUIRED TO ACCOMPLISH RELATED OPERATIONS.
- CONTRACTOR SHALL BECOME AWARE OF ALL APPLICABLE GUIDELINES, MUNICIPAL CODES, AND OTHER GOVERNING DOCUMENTS THAT IMPACT THE DESIGN AND CONSTRUCTION OF THIS PROJECT.
- LANDSCAPE CONTRACTOR SHALL REVIEW ALL SITE RELATED DOCUMENTS. SOME PLANS ARE DIAGRAMMATIC IN NATURE. IF THERE APPEAR TO BE CONFLICTS BETWEEN PLANT LOCATIONS AND UTILITIES, DRAINAGE STRUCTURES, ETC. CONTRACTOR SHALL NOTIFY THE OWNER'S REPRESENTATIVE PRIOR TO PROCEEDING.
- VERIFY THAT SUBGRADE PREPARATION HAS BEEN COMPLETED TO ACCEPTABLE TOLERANCES PRIOR TO BEGINNING ANY WORK.
- PRIOR TO FINAL ACCEPTANCE, TEST THE IRRIGATION SYSTEM UNDER THE SUPERVISION OF THE LANDSCAPE ARCHITECT AND OWNER.
- FOR OUTDOOR LANDSCAPE LIGHTING, INSTALL PER MANUFACTURER'S RECOMMENDATIONS AND PROVIDE OWNER WITH TRAINING ON THE USE OF THE CONTROLLER AND ALL RELATED LIGHTING PRODUCT MANUALS RELEVANT TO THE OPERATION OF THE LIGHTING SYSTEM.
- VERIFY LIGHTING CONTROLLER LOCATION WITH OWNER AND GENERAL CONTRACTOR PRIOR TO INSTALLATION.
- CONTRACTOR TO PROVIDE OWNER WITH A LANDSCAPE AND IRRIGATION MAINTENANCE MANUAL EXPLAINING IRRIGATION SCHEDULING AND A DIAGRAM OF ZONES. CONTRACTOR TO PROVIDE BEST MAINTENANCE PRACTICES FOR FERTILIZER APPLICATION, LAWN CARE, PRUNING, PLAYGROUND MAINTENANCE, EXERCISE EQUIPMENT CARE, AND OTHER APPLICABLE SITE MAINTENANCE. CONTRACTOR TO PROVIDE ALL APPLICABLE PRODUCT OWNER'S MANUALS. CONTRACTOR TO PROVIDE IN HARD COPY AND A DIGITAL COPY FOR OWNER USE.

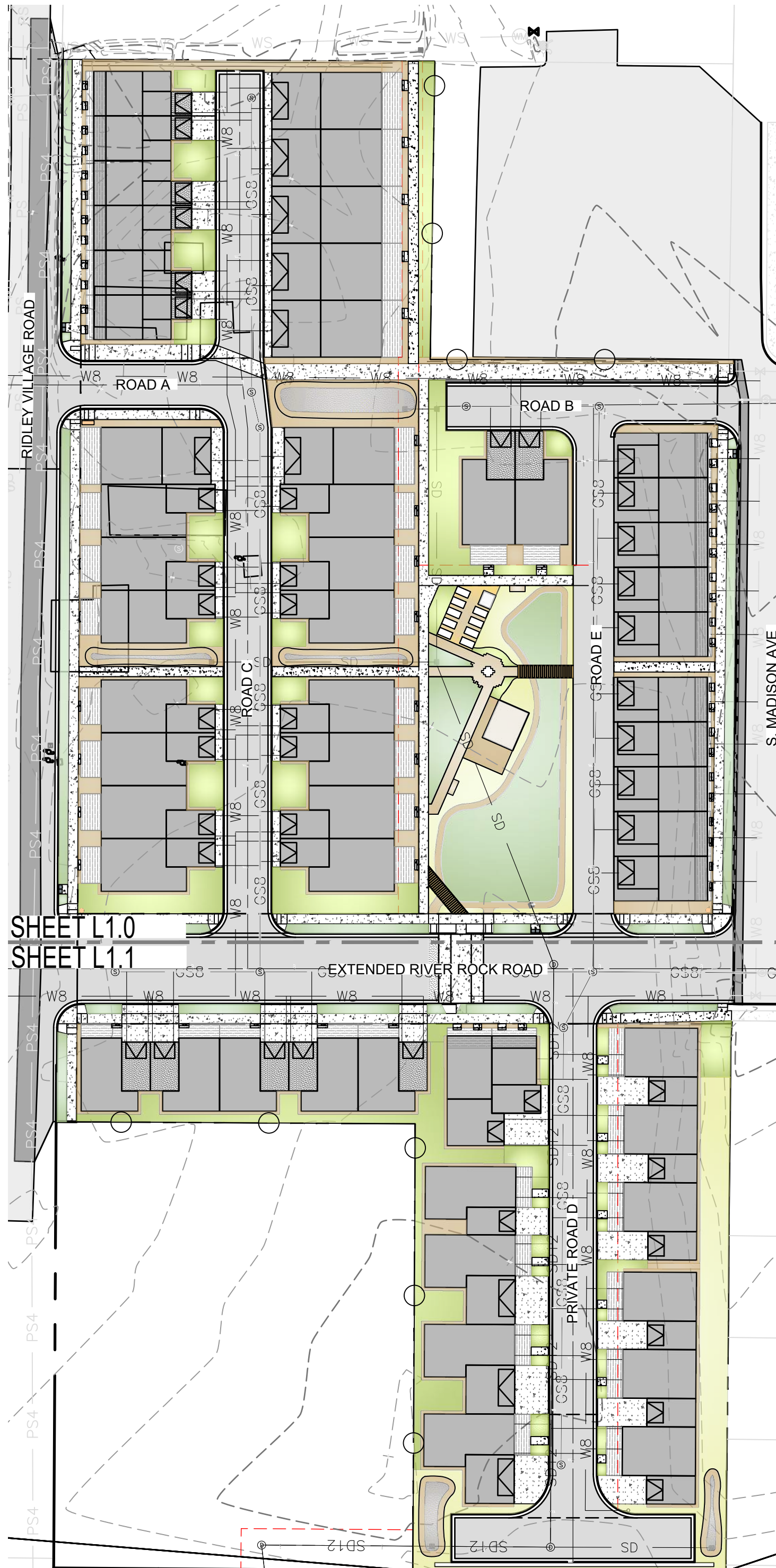
LAYOUT NOTES

- ON-SITE VERIFICATION OF ALL DIMENSIONS AND CONDITIONS SHALL BE THE RESPONSIBILITY OF THE GENERAL CONTRACTOR. NOTED DIMENSIONS TAKE PRECEDENCE OVER SCALE, LARGER SCALE OVER SMALLER SCALE, ADDENDA AND CLARIFICATIONS OVER PREVIOUS DOCUMENTS.
- CONTRACTOR TO LAY OUT SITE ELEMENTS AND VERIFY LAYOUT WITH LANDSCAPE ARCHITECT PRIOR TO CONSTRUCTION.
- FOR DIMENSIONS OF EXISTING BUILDINGS AND RELATED WORK, REFER TO THE ARCHITECTURAL DRAWINGS AND CIVIL DRAWINGS.
- WHERE DIMENSIONS ARE CALLED AS "EQUAL," SPACE REFERENCED ITEMS EQUALLY, MEASURED TO THEIR CENTER LINES.
- MEASUREMENTS ARE TO FACE OF BUILDING, WALL OR FIXED SITE IMPROVEMENT. DIMENSIONS TO CENTERLINES IS AS INDICATED.
- INSTALL INTERSECTING ELEMENTS AT 90 DEGREE ANGLES TO EACH OTHER UNLESS OTHERWISE NOTED.
- INSTALL NEW HARDSCAPE PAVING ELEMENTS (CURBS, RAMPS, WALKWAYS, PATIOS, TRAILS, PAVEMENT, ETC.) FLUSH WITH EXISTING HARDSCAPE PAVING ELEMENTS UNLESS OTHERWISE NOTED.
- PROVIDE EXPANSION JOINTS WHERE CONCRETE FLATWORK MEETS VERTICAL STRUCTURES SUCH AS WALLS, CURBS, STEPS AND BUILDING ELEMENTS.
- EXPANSION JOINTS IN CONCRETE WALKWAYS SHALL BE LOCATED TWENTY FEET (20'-0") O.C. MAXIMUM OR AS INDICATED. CONTROL JOINTS IN CONCRETE WALKWAYS SHALL BE LOCATED FIVE FEET (5'-0") O.C. MAXIMUM OR AS INDICATED. LAYOUT JOINT PATTERN AS INDICATED IN LAYOUT PLANS; ALIGN JOINTS WITH EDGE OF WALL OR OPENING AS POSSIBLE.
- ALL RADII OF WALKWAY INTERSECTIONS ON THE PLANS SHALL BE 4'-0" OR AS INDICATED ON THE PLANS.
- THE CONTRACTOR SHALL ENSURE ADA COMPLIANCE FOR CONSTRUCTION OF ADA FEATURES AND APPURTENANCES (INCLUDING, BUT NOT LIMITED TO, SIDEWALK & CURB RAMP CROSS SLOPES, RAMP SLOPES, THRESHOLDS, SITE FURNISHINGS, ETC.) AS DETAILED IN THE PLANS AND IN ACCORDANCE WITH REFERENCED STANDARD DRAWING, SPECIFICATIONS AND ESTABLISHED ADA GUIDELINES AND STANDARDS. THE CONTRACTOR IS RESPONSIBLE FOR FIELD CHECKING SLOPES AND DIMENSIONS OF ALL FORMWORK FOR COMPLIANCE PRIOR TO INSTALLATION OF CONCRETE. THE OWNER'S REPRESENTATIVE RESERVES THE RIGHT TO INSPECT ANY ADA FEATURES AND APPURTENANCES AT ANY TIME BEFORE FINAL COMPLETION OF THE PROJECT AND MAY REQUIRE THE CONTRACTOR TO REMOVE, REPLACE, AND/OR CORRECT ANY WORK AT THE CONTRACTORS EXPENSE THAT IS NOT IN COMPLIANCE, AS DETERMINED BY THE PROJECT MANAGER.
- ALL TEMPORARY ACCESS ROUTES FOR PEDESTRIANS SHALL BE ADA COMPLIANT.
- COORDINATE FINISH GRADE OF NEW ELEMENTS WITH EXISTING ELEMENTS TO REMAIN TO ENSURE ADA COMPLIANCE AND POSITIVE DRAINAGE AWAY FROM SITE ELEMENTS. IF GRADES OF NEW SITE ELEMENTS PREVENT OR OBSTRUCT PROPER SITE DRAINAGE, CONTRACTOR TO NOTIFY OWNER AND LANDSCAPE ARCHITECT AND MAKE MUTUALLY AGREED UPON ADJUSTMENTS PRIOR TO INSTALLING SITE IMPROVEMENTS.
- CONTRACTOR TO KEEP DISTURBANCE TO ADJACENT LANDSCAPE AREAS TO A MINIMUM AND TO AVOID DISTURBANCE AND DEMOLITION OF EXISTING VEGETATION DESIGNATED FOR PRESERVATION EXCEPT AS APPROVED BY LANDSCAPE ARCHITECT. WHEN EXCAVATION NEAR PLANT MATERIAL TO BE PROTECTED MUST BE CARRIED OUT, DAMAGE TO BE LIMITED BY ROOT PRUNING AND HAND EXCAVATION ONLY. ROOT PRUNING SHALL BE COMPLETED BEFORE GRADING IS STARTED.

SITE FURNISHING SCHEDULE


REPRESENTATIVE IMAGE	PLAN REF. #	PRODUCT/MODEL	MANUFACTURER
BENCHES			
	[14]	EVA BENCH REVERIE COLLECTION MODEL: EVA-20-W COLOR: BLACK METAL COMPONENTS, KEBONY WOOD SLATS SIZE: 72"L X 23"W X 29 3/4"H QTY: 2	VICTOR STANLEY 2103 BRICKHOUSE RD DUNKIRK, MD 20754 WWW.VICTORSTANLEY.COM P 301-855-8300
PICNIC TABLES			
	[13]	MILAN COLLECTION MODEL: CENTRA UNA CAFE TABLE COLOR: BLACK SIZE: 36" ROUND TABLETOP, 3' H QTY: 6	VICTOR STANLEY 2103 BRICKHOUSE RD DUNKIRK, MD 20754 WWW.VICTORSTANLEY.COM P 301-855-8300
CHAIRS			
	[15]	PRODUCTION COLLECTION MODEL: PRSCA-8 COLOR: BLACK METAL SIZE: 23"W X 32"H QTY: 26	VICTOR STANLEY 2103 BRICKHOUSE RD DUNKIRK, MD 20754 WWW.VICTORSTANLEY.COM P 301-855-8300
MAILBOX			
	[12]	FORT KNOX MAILBOX MODEL: CLUSTER BOX UNIT (CBU) COLOR: BLACK SIZE: 24"L X 20"W X 42"H QTY: 2 CLUSTERED TOGETHER, 4 SETS	FORT KNOX MAILBOX, LLC 265 TECH WAY, GRANTS PASS, OR 97526 WWW.FORTKNOXMAILBOX.COM P 541-956-0825
PAVILION			
	[19]	ROMTEC DIMENSIONAL LUMBER PAVILIONS MODEL: SHED ROOF SIZE: MED. 16' X 20' QTY: 1	ROMTEC 18240 NORTH BANK RD, ROSEBURG, OR 97470 WWW.ROMTEC.COM P 541-496-3541
FIRE PIT			
	[16]	MONTANA FIRE PITS MODEL: AON STEEL SQUARE FIRE PIT TABLE STYLE: BLACK SIZE: 48"W X 48"L X 18"H QTY: 1	MONTANA FIRE PITS 2302 MCDONALD AVE, MISSOULA, MT 59801 WWW.MONTANAFIREPITS.COM P 833-228-5244

REPRESENTATIVE IMAGE	PLAN REF. #	PRODUCT/MODEL	MANUFACTURER
GARDEN PLANTER			
	[17]	METAL RAISED GARDEN BED MODEL: 32" EXTRA TALL MODERN 42" x 83" COLOR: URBAN CHARCOAL SIZE: 42"W X 83"L X 32"H (65 CUBIC FT) QTY: 9 OR APPROVED EQUAL	VEGO GARDEN 13808 BOUDREAU RD BLDG #2 TOMBALL TX 77377 WWW.VEGOGARDEN.COM P 866-597-1888
DOGIPOT MINI JUNIOR BAG DISPENSER			
	[21]	DOG BAG DISPENSER MODEL: 400-BAG COUNT DOGIPOT SMART LITTER PICKUP BAGS COLOR: BLACK SIZE: 9"W X 3.5"L X 12.5"H QTY: 2 OR APPROVED EQUAL	DOGIPOT 5340 YOUNG PINE RD, SUITE 8 ORLANDO, FL 32829 WWW.DOGIPOT.COM P 407-888-4627
STORAGE SHED			
	[18]	GRAINGER STORAGE BUILDING MODEL: SOJAG DENALI STEEL STORAGE SHED SIZE: 96.7'H X 73.6'W X 83.7'L QTY: 1	GRAINGER - IDAHO BRANCH 5576 IRVING ST. BOISE, ID 83706 WWW.GRAINGER.COM P 1-800-472-4643
PEDESTRIAN LIGHTING			
		FORMS AND SURFACES PEDESTRIAN LIGHTING MODEL: VAO PEDESTRIAN LIGHTING STYLE: STAINLESS STEEL, BLACK, POWDERCOAT SIZE: POLE DIAM. 4", HEIGHT 145" QTY: 4	FORMS AND SURFACES 5055 6TH STREET CARPINTERIA, CA 93013 WWW.FORMS-SURFACES.COM P 1-800-451-0410
BOLLARD PATH LIGHTING			
		FORMS AND SURFACES BOLLARD LIGHTING MODEL: VAO BOLLARD STYLE: STAINLESS STEEL, BLACK, POWDERCOAT SIZE: POLE DIAM. 3", HEIGHT 31" QTY: 7	FORMS AND SURFACES 5055 6TH STREET CARPINTERIA, CA 93013 WWW.FORMS-SURFACES.COM P 1-800-451-0410



SHEET L1.0
SHEET L1.1

JUL 01, 2025 9:55:05am User: gophic@hnhgroup.com
 W:\PROJECTS\1744 AFFINITY - REAL ESTATE MANAGEMENT - INC\24-000467 RIDLEY VILLAGE COURT TOWN HOMES CONTRACT\CAD\24-000467_LAYOUT.DWG

BY	SS	SS			
DATE	06-24-2025	06-27-2025			
REVISIONS	△ DRAFT LANDSCAPE SET	△ PERMIT SET			
 SCJ STUDIO LANDSCAPE ARCHITECTURE 1807 FLORENCE AVENUE, BUTTE, MT 59701 P: 406.992.7070 SCJLLA.COM					
COVER SHEET & GENERAL NOTES RIDLEY VILLAGE COURT TOWNHOMES SANDPOINT, ID					
					
DESIGNER:	MG				
DRAWN BY:	SS				
APPROVED BY:	MG				
DATE:	JUNE 2025				
JOB NO.:	7141				
DRAWING FILE NO.:	24-000467_LA00				
DRAWING NO.:	L0.0				
SHEET NO.:	1 OF 10				

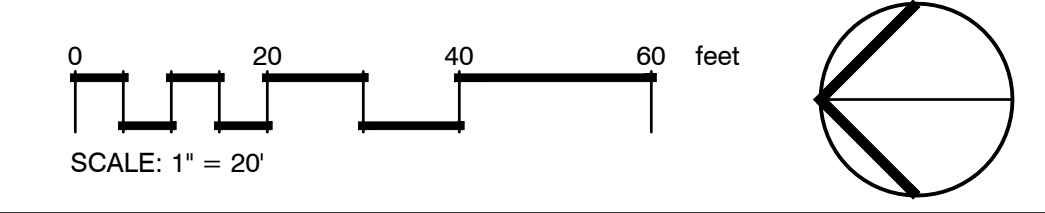


REFERENCE NOTES SCHEDULE NORTH SITE PLAN

SYMBOL	CODE	DESCRIPTION	QTY	DETAIL
	1	ENGINEERED RAIN GARDENS, BIOSWALES - SEE CIVIL	7,881 SF	1/L1.2
	2	COURSE WOOD CHIP MULCH	8,465 SF	
	3	ROCK MULCH PEAK SAND & GRAVEL BASALT A-ROCK - 1" - 5/8" CLEAR, NO FINES	9,878 SF	
	4	RIVER ROCK PEAK SAND & GRAVEL RIVER ROCK ROUND 1"-3" DIAMETER ROCK, 3" DEPTH CLEAR, NO FINES	952 SF	
	5	MOWED LAWN	8,998 SF	
	6	SEED MIX - SEE SHEET L2.0	2,123 SF	
	7	CRUSHED GRANITE 1/4" MINUS CRUSHED OR DECOMPOSED GRANITE, LOCALLY SOURCED WHEN POSSIBLE	330 SF	2/L1.2
	8	PAVILION PATIO BELGARD PAVERS RUNNING BOND PATTERN 12"x24", TEXADA SLABS IN CHAMOIS	693 SF	3/L1.2
	9	PARK PATHWAYS BELGARD PAVER RUNNING BOND PATTERN 12"x24", TEXADA SLABS IN LIMESTONE	852 SF	3/L1.2
	10	BOARDWALK CROSSING RAIN GARDEN 6'W X 27'L AND 6'W X 24'L	2	4/L1.2
	11	LANDSCAPE EDGING COLMET ATTACHED-STAKE STEEL EDGING, 4" HEIGHT, BLACK, 14 GAUGE OR APPROVED EQUAL	845 LF	2/L1.2
	12	MAILBOX FORTKNOX MAILBOX, 15 UNITS, 2 BOXES TOGETHER	4 SETS	
	13	MOVEABLE PICNIC TABLES VICTOR STANLEY CENTRA UNA CAFE TABLE, BLACK	6	
	14	BENCHES VICTOR STANLEY EVA BENCH, BLACK METAL, KEBONY WOOD SLATS	2	
	15	CHAIRS VICTOR STANLEY CHAIR PRSCA-8, BLACK METAL, 23"WX32"H	26	
	16	FIRE PIT MT FIRE PITS AON STEEL SQUARE FIRE PIT TABLE, 48"x48", BLACK, PROPANE WITH REMOTE TANK	1	
	17	RAISED GARDEN BEDS FOR COMMUNITY GARDEN	9	
	18	GARDEN STORAGE SHED GRAINGER DENALI STEEL STORAGE SHED - 96.7" X 73.6" X 83.7"		
	19	PAVILION ROMTEC DIMENSIONAL LUMBER PAVILION WITH SHED ROOF - 16' X 20'		
	20	FENCING ALONG PROPERTY LINE SLIPFENCE COMMERCIAL HORIZONTAL WOOD FENCE WITH ALUMINUM POSTS	295 LF	1/L1.3
	21	DOG BAG DISPENSER 400-BAG COUNT DOGIPOT, 9"WX3.5"LX12.5"H	2	

LIGHTING SCHEDULE PARK SITE PLAN

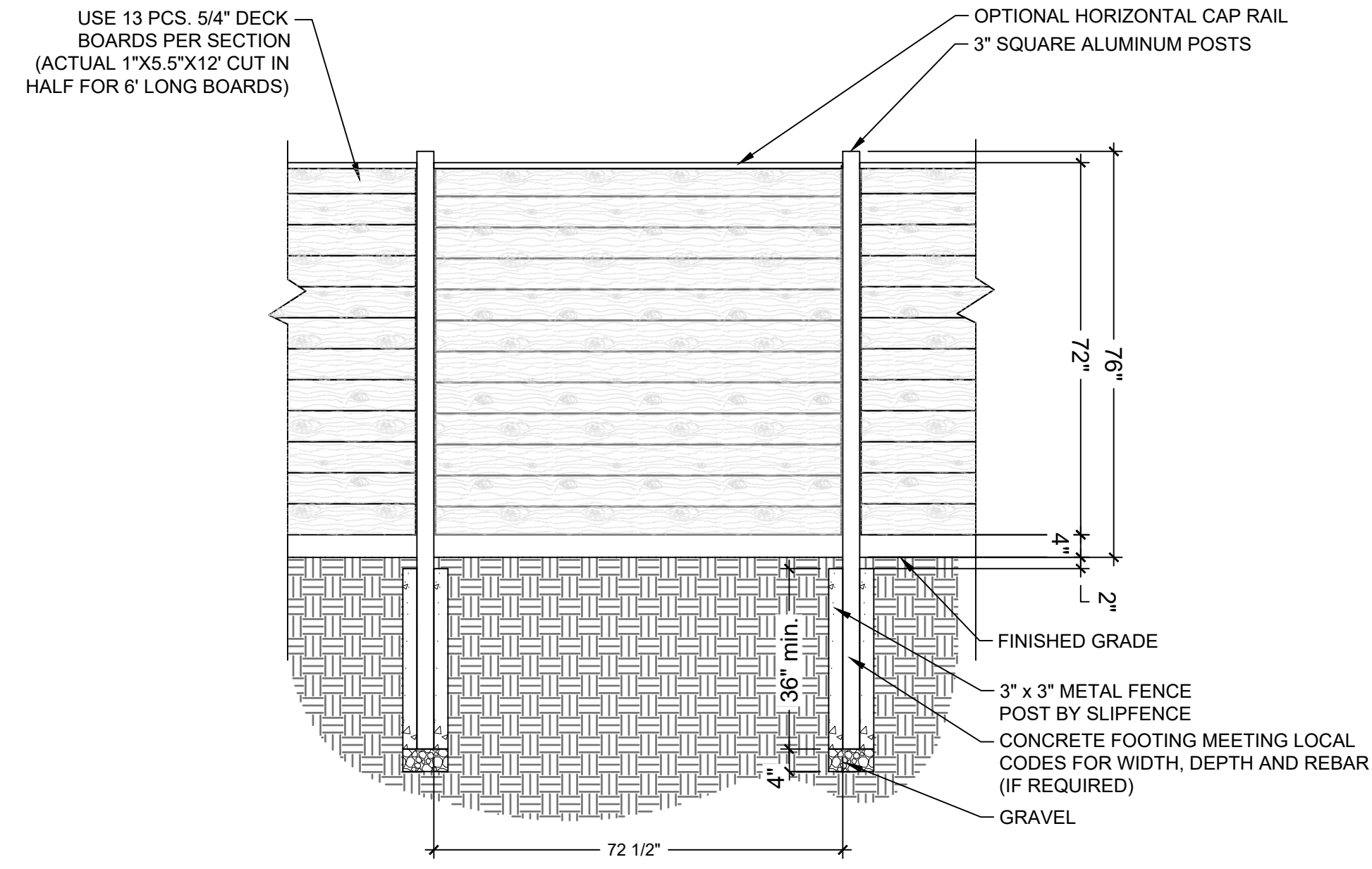
SYMBOL	MANUFACTURER/MODEL/DESCRIPTION	QTY
	PEDESTRIAN OVERHEAD LIGHT FORMS AND SURFACES VAO MODEL DARK SKY APPROVED 4" POLE DIAM., 145" HEIGHT STAINLESS STEEL, POWDERCOAT, BLACK TEXTURE, SURFACE MOUNT 3000K COLOR TEMP	4
	BOLLARD PATH LIGHT FORMS AND SURFACES VAO MODEL DARK SKY APPROVED 3" POLE DIAM., 31" HEIGHT STAINLESS STEEL, POWDERCOAT, BLACK TEXTURE, SURFACE MOUNT 3000K COLOR TEMP	7



JUN 01, 2025 8:55:02am User: gphh@hnh.com
 PROJECTS\17414_AFFINITY_REAL_ESTATE_MANAGEMENT_INC\24-000467 RIDLEY VILLAGE COURT TOWNHOMES CONTRACT\CAD\24-000467 LA00.DWG

REVISIONS DATE 06-24-2025 SS 06-27-2025 SS	BY SS SS	DRAFT LANDSCAPE SET PERMIT SET	 SCJ STUDIO LANDSCAPE ARCHITECTURE 1807 FLORENCE AVENUE SUITE, MT 59701 P. 406.992.7070 SCALANCE.COM
NORTH SITE PLAN			PROJECT NAME RIDLEY VILLAGE COURT TOWNHOMES SANDPOINT, ID
SEAL 			DESIGNER: MG DRAWN BY: SS APPROVED BY: MG DATE: JUNE 2025 JOB NO: 7141 DRAWING FILE NO: 24-000467 LA00 DRAWING NO: L1.0 SHEET NO: 2 OF 10

J:\01_2025_06_02_25mm - User: sghh\scj\hinswood\A.V. PROJECS\1747_AFFINITY_REAL ESTATE_MANAGEMENT_INC\24-000467 RIDLEY VILLAGE COURT TOWN HOMES CONTRACT\CAD\24-000467_LA00.DWG



1 SLIFFENCE SECTION

1/2" = 1'-0"

P-RE-RID-74

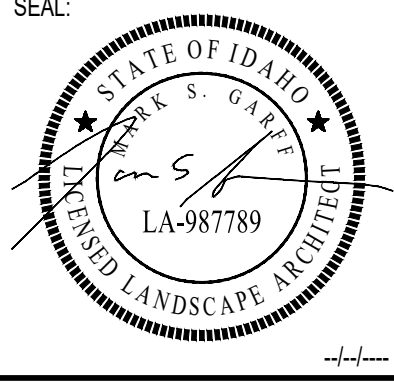
REVISIONS	DATE	BY
△ DRAFT LANDSCAPE SET	06-24-2025	SS
△ PERMIT SET	06-27-2025	SS

SCJ STUDIO
LANDSCAPE ARCHITECTURE

1807 FLORENCE AVENUE, BUTTE, MT 59701
P. 406.992.7070
SCJLANSCE.COM

SHEET TITLE: **SITE DETAILS**

PROJECT NAME: **RIDLEY VILLAGE COURT TOWNHOMES SANDPOINT, ID**



DESIGNER:	MG
DRAWN BY:	SS
APPROVED BY:	MG
DATE:	JUNE 2025
JOB NO:	7141
DRAWING FILE NO:	24-000467 LA00
DRAWING NO:	L1.3
SHEET NO:	5 OF 10

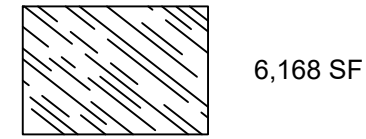
J:\01_2025_0625_120m - Use_0625120m.dwg
 J:\PROJECTS\1744_AFFINITY_REAL ESTATE_MANAGEMENT_INC\24-000467_RIDLEY VILLAGE COURT TOWN HOMES CONTRACT\CAD\24-000467_LA00.DWG



PLANT SCHEDULE

SYMBOL	QTY	BOTANICAL / COMMON NAME	SIZE
TREES			
	11	ACER GLABRUM ROCKY MOUNTAIN MAPLE	1.5" CAL.
	15	ACER X FREEMANII 'JEFFERSRED' AUTUMN BLAZE® FREEMAN MAPLE	2.5" CAL.
	14	GLEDITSIA TRIACANTHOS 'SKYLINE' SKYLINE HONEY LOCUST	2.5" CAL.
	1	PLATANUS X ACERIFOLIA LONDON PLANE TREE	2.5" CAL.
	13	SORBUS SITCHENSIS WESTERN MOUNTAIN ASH	1.5" CAL.
	12	TILIA CORDATA LITTLELEAF LINDEN	2.5" CAL.

SEEDING NOTES



6,168 SF

- APPLICATION RATE OF 25-35 LBS/ACRE (BROADCAST OR DRILL). ADJUST ACCORDINGLY FOR SQUARE FOOTAGE
- SEEDING TIME IS PREFERRED IN THE FALL (LATE SEPT-OCT), OR ALTERNATIVELY SEED IN EARLY SPRING (MARCH-APRIL) BEFORE LAST FROST.
- ASSURE SOIL IS FIRM AND A WEED-FREE SEEDBED. POST-SEEDING LIGHTLY RAKE AND PRESS SEEDS INTO SOIL.
- WHEN MAINTAINING SEED MOW ONCE IN LATE FALL OR EARLY SPRING TO ABOUT 4-6 INCHES. DO NOT IRRIGATE AFTER ESTABLISHMENT UNLESS IN EXTREME DROUGHT. AVOID HERBICIDES; SPOT TREAT INVASIVE WEEDS IF NECESSARY. OVERSEED EVERY 3-5 YEARS TO MAINTAIN DENSITY
- ALL SPECIES MUST BE LOCALLY ADAPTED NATIVE GENOTYPES
- PROVIDE SEED TAGS AND GERMINATION RATES WITH DELIVERY
- MIX SHOULD BE CLEANED, TESTED, AND READY TO BROADCAST OR DRILL
- SUBSTITUTIONS ONLY UPON WRITTEN APPROVAL

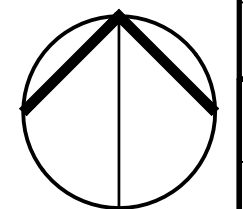
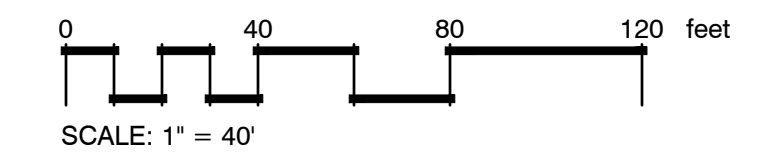
NATIVE GRASSES - 60% TOTAL

BOTANICAL NAME	COMMON NAME	WEIGHT %
Festuca idahoensis	Idaho Fescue	20%
Elymus trachycaulus	Slender Wheatgrass	15%
Koeleria macrantha	Prairie Junegrass	10%
Bouteloua gracilis	Blue Grama	10%
Poa secunda	Sandberg Bluegrass	5%

NATIVE WILDFLOWERS - 40% TOTAL

BOTANICAL NAME	COMMON NAME	WEIGHT %
Gaillardia aristata	Blanketflower	10%
Linum lewisii	Lewis Flax	10%
Achillea millefolium	Western Yarrow	8%
Echinacea angustifolia	Narrowleaf Coneflower	5%
Erigeron speciosus	Showy Fleabane	5%
Penstemon strictus or fruticosus	Rocky Mountain or Shrubby Penstemon	5%
Solidago missouriensis	Missouri Goldenrod	5%

SHEET L2.1
SHEET L2.2

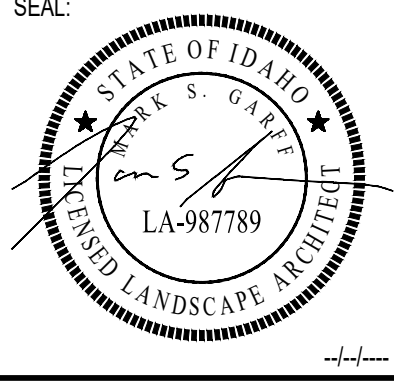


REVISIONS	DATE	BY
	06-24-2025	SS
	06-27-2025	SS

SCJ STUDIO
 LANDSCAPE ARCHITECTURE

 1807 FLORENCE AVENUE BUTTE, MT 59701
 P. 406.992.7870
 SCJLLA.COM

SHEET TITLE: **TREE PLANTING PLAN & DETAILS**
 PROJECT NAME: **RIDLEY VILLAGE COURT TOWNHOMES SANDPOINT, ID**



DESIGNER:	MG
DRAWN BY:	SS
APPROVED BY:	MG
DATE:	JUNE 2025
JOB NO:	7141
DRAWING FILE NO:	24-000467 LA00
DRAWING NO:	L2.0
SHEET NO:	6 OF 10

PLANT SCHEDULE NORTH PLANTING PLAN

SYMBOL	QTY	BOTANICAL / COMMON NAME	SIZE
TREES			
	8	ACER GLABRUM ROCKY MOUNTAIN MAPLE	1.5" CAL.
	10	ACER X FREEMANII 'JEFFERSRED' AUTUMN BLAZE® FREEMAN MAPLE	2.5" CAL.
	12	GLEDITSIA TRIACANTHOS 'SKYLINE' SKYLINE HONEY LOCUST	2.5" CAL.
	1	PLATANUS X ACERIFOLIA LONDON PLANE TREE	2.5" CAL.
	12	SORBUS SITCHENSIS WESTERN MOUNTAIN ASH	1.5" CAL.
	12	TILIA CORDATA LITTLELEAF LINDEN	2.5" CAL.

SYMBOL	QTY	BOTANICAL / COMMON NAME	SIZE	SPACING
SHRUBS				
	6	AMELANCHIER ALNIFOLIA 'REGENT' REGENT SERVICEBERRY	5 GAL	
	19	ITEA VIRGINICA 'SPRICH' LITTLE HENRY® SWEETSPIRE	5 GAL	
	21	PHYSOCARPUS OPULIFOLIUS 'SEWARD' SUMMER WINE® NINEBARK	5 GAL	
	7	PICEA PUNGENS 'GLAUCA GLOBOSA' BLUE GLOBE COLORADO SPRUCE	5 GAL	
	46	PRUNUS BESSEYI 'P011S' PAWNEE BUTTES® SAND CHERRY	5 GAL	
	29	RHUS AROMATICA 'GRO-LOW' GRO-LOW FRAGRANT SUMAC	5 GAL	
	37	RIBES AUREUM GOLDEN CURRANT	5 GAL	
	9	SYMPHORICARPOS ALBUS COMMON SNOWBERRY	5 GAL	
	3	SYRINGA PUBESCENS PATULA 'MISS KIM' MISS KIM KOREAN LILAC	5 GAL	
	18	VIBURNUM DENTATUM 'AUTUMN JAZZ' AUTUMN JAZZ VIBURNUM	5 GAL	

ORNAMENTAL GRASSES				
	13	HELICOTRICHON SEMPERVIRENS BLUE OAT GRASS	1 GAL	
	10	SESLERIA AUTUMNALIS AUTUMN MOOR GRASS	1 GAL	

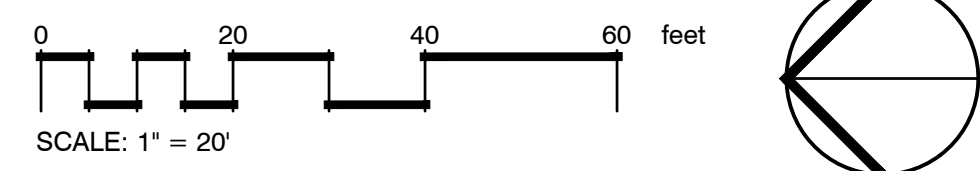
PERENNIALS				
	15	HEUCHERA X 'PALACE PURPLE' PALACE PURPLE CORAL BELLS	1 GAL	
	20	RUDBECKIA LACINIATA CUTLEAF CONEFLOWER	1 GAL	
	13	SALVIA X SYLVESTRIS HYBRID SAGE	1 GAL	
	26	TIARELLA CORDIFOLIA FOAMFLOWER	1 GAL	

RAIN GARDEN				
	9	ARONIA MELANOCARPA BLACK CHOKEBERRY	5 GAL	
	21	CAREX GEYERI ELK SEDGE	1 GAL	
	31	CORNUS SERICEA RED TWIG DOGWOOD	5 GAL	
	3	HOLODISCUS DISCOLOR OCEANSPRAY	5 GAL	
	13	JUNCUS PATENS 'ELK BLUE' SPREADING RUSH	1 GAL	
	25	PANICUM VIRGATUM 'NORTHWIND' NORTHWIND SWITCH GRASS	1 GAL	
	3	PHYSOCARPUS OPULIFOLIUS 'AMBER JUBILEE' AMBER JUBILEE NINEBARK	5 GAL	
	21	RIBES SANGUINEUM RED FLOWERING CURRANT	5 GAL	
	17	SCHIZACHYRIUM SCOPARIUM 'STANDING OVATION' STANDING OVATION LITTLE BLUESTEM	1 GAL	

SYMBOL	QTY	BOTANICAL / COMMON NAME	SIZE	SPACING
GROUND COVERS				
	120	ACHILLEA MILLEFOLIUM COMMON YARROW	2.5" POT	15" o.c.
	103	ARCTOSTAPHYLOS UVA-URSI KINKINNICK	4" POT	18" o.c.
	2.123 SF	MIX COMPOSITION SEED MIX SEE SHEET L2.0 FOR SEEDING NOTES	SEED	
	94	PHLOX SUBULATA CREEPING PHLOX	4" POT	18" o.c.
	8.981 SF	TURF GRASS	SOD	



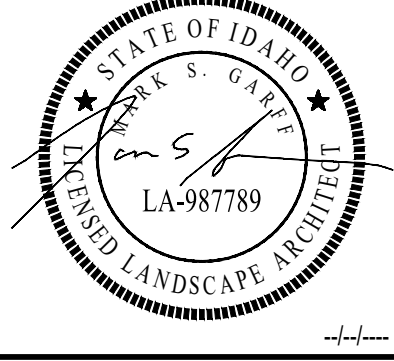
JUL 01, 2025 8:53:25AM User: scj@scjstudio.com
 W:\PROJECTS\1714 AFFINITY REAL ESTATE MANAGEMENT, INC.\24-000467 RIDLEY VILLAGE COURT TOWN HOMES CONTRACT\CAD\24-000467 LAODING



REVISIONS	DATE	BY
	06-24-2025	SS
	06-27-2025	SS

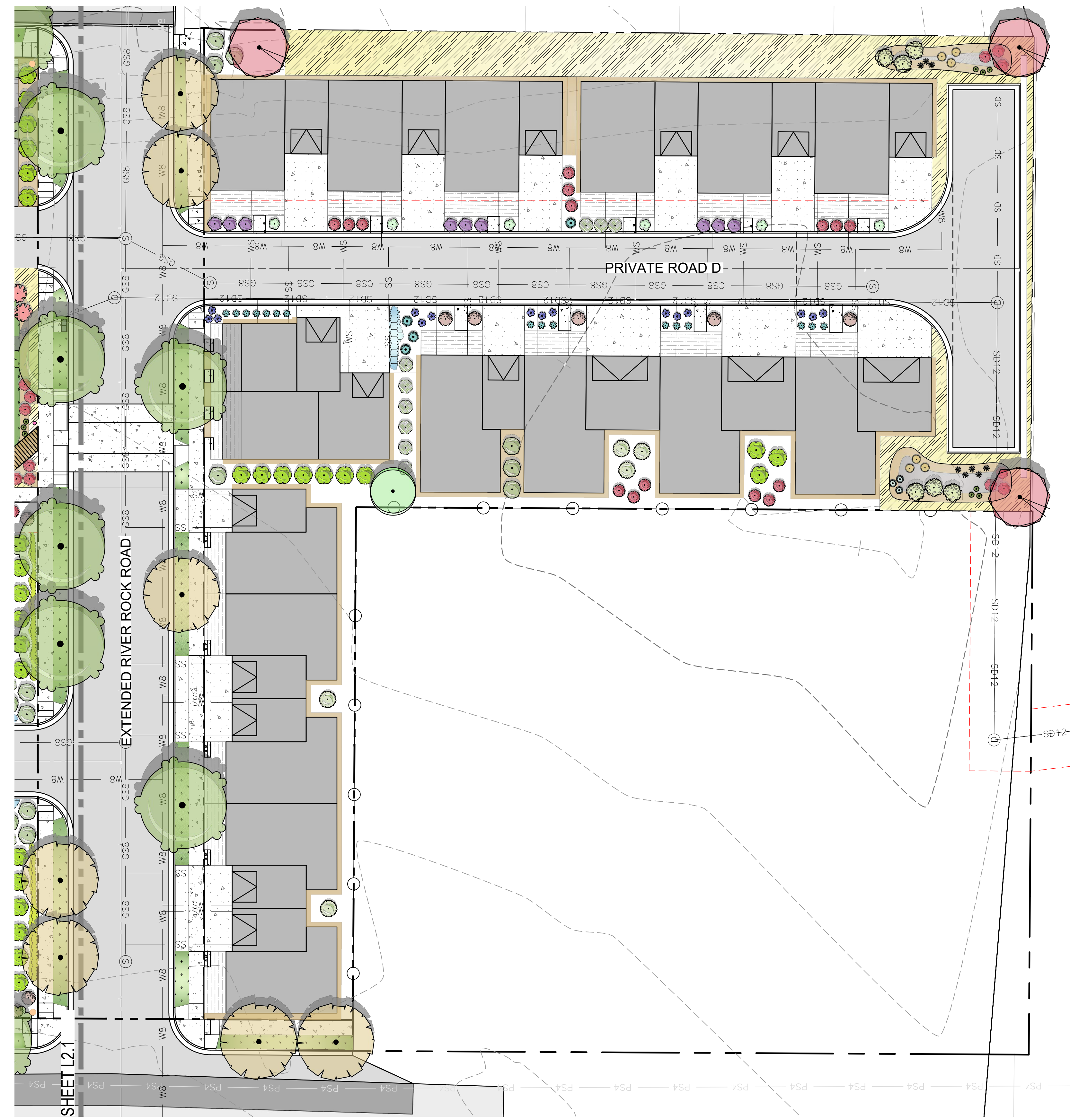
SCJ STUDIO
 LANDSCAPE ARCHITECTURE
 1807 FLORENCE AVENUE BUTTE, MT 59701
 P. 406.992.7070
 SCJLANDSCAPE.COM

SHEET TITLE: NORTH PLANTING PLAN
 PROJECT NAME: RIDLEY VILLAGE COURT TOWNHOMES
 SANDPOINT, ID



DESIGNER:	MG
DRAWN BY:	SS
APPROVED BY:	MG
DATE:	JUNE 2025
JOB NO.:	7141
DRAWING FILE NO.:	24-000467 LA00
DRAWING NO.:	L2.1
SHEET NO.:	7 OF 10

LA 01, 2025 8:53:25 AM - User: gophic@minnowgard.com
 W:\PROJECTS\1744 ACTIVITY - REAL ESTATE MANAGEMENT, INC.\24-000467 RIDLEY VILLAGE COURT TOWN HOMES CONTRACT\CAD\24-000467 LA00.DWG



SHEET L2.1

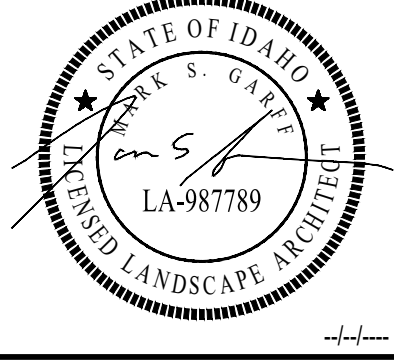
PLANT SCHEDULE SOUTH PLANTING PLAN

SYMBOL	QTY	BOTANICAL / COMMON NAME	SIZE	SPACING
TREES				
	3	ACER GLABRUM ROCKY MOUNTAIN MAPLE	1.5" CAL.	
	5	ACER X FREEMANII 'JEFFERSRED' AUTUMN BLAZE® FREEMAN MAPLE	2.5" CAL.	
	2	GLEDTISIA TRIACANTHOS 'SKYLINE' SKYLINE HONEY LOCUST	2.5" CAL.	
	1	SORBUS SITCHENSIS WESTERN MOUNTAIN ASH	1.5" CAL.	
SHRUBS				
	5	AMELANCHIER ALNIFOLIA 'REGENT' REGENT SERVICEBERRY	5 GAL	
	15	PHYSOCARPUS OPULIFOLIUS 'SEWARD' SUMMER WINE® NINEBARK	5 GAL	
	4	PICEA PUNGENS 'GLAUCA GLOBOSA' BLUE GLOBE COLORADO SPRUCE	5 GAL	
	5	PRUNUS BESSEYI 'P011S' PAWNEE BUTTES® SAND CHERRY	5 GAL	
	7	RHUS AROMATICA 'GRO-LOW' GRO-LOW FRAGRANT SUMAC	5 GAL	
	9	RIBES AUREUM GOLDEN CURRANT	5 GAL	
	9	SYRINGA PUBESCENS PATULA 'MISS KIM' MISS KIM KOREAN LILAC	5 GAL	
	10	VIBURNUM DENTATUM 'AUTUMN JAZZ' AUTUMN JAZZ VIBURNUM	5 GAL	
ORNAMENTAL GRASSES				
	16	HELICOTRICHON SEMPERVIRENS BLUE OAT GRASS	1 GAL	
PERENNIALS				
	6	PEROVSKIA ATRIPLICIFOLIA RUSSIAN SAGE	1 GAL	
	15	SALVIA X SYLVESTRIS HYBRID SAGE	1 GAL	
RAIN GARDEN				
	6	CAREX GEYERI ELK SEDGE	1 GAL	
	6	CORNUS SERICEA RED TWIG DOGWOOD	5 GAL	
	6	HOLIDISCUS DISCOLOR OCEANSPRAY	5 GAL	
	8	JUNCUS PATENS 'ELK BLUE' SPREADING RUSH	1 GAL	
	6	PANICUM VIRGATUM 'NORTHWIND' NORTHWIND SWITCH GRASS	1 GAL	
	3	SCHIZACHYRIUM SCOPARIUM 'STANDING OVATION' STANDING OVATION LITTLE BLUESTEM	1 GAL	
SYMBOL	QTY	BOTANICAL / COMMON NAME	SIZE	SPACING
GROUND COVERS				
	42	ACHILLEA MILLEFOLIUM COMMON YARROW	2.5" POT	15" o.c.
	4,045 SF	MIX COMPOSITION SEED MIX SEE SHEET L2.0 FOR SEEDING NOTES	SEED	
	1,037 SF	TURF GRASS	SOD	

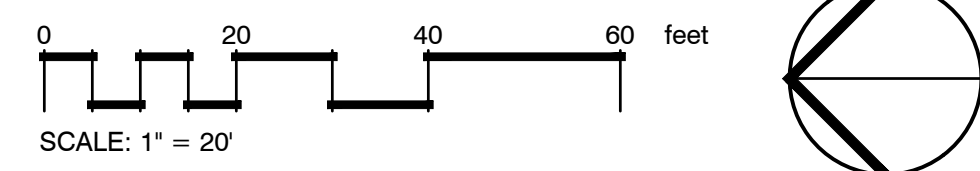
REVISIONS	DATE	BY
△ DRAFT LANDSCAPE SET	06-24-2025	SS
△ PERMIT SET	06-27-2025	SS

SCJ STUDIO
 LANDSCAPE ARCHITECTURE
 1807 FLORENCE AVENUE BUTTE, MT 59701
 P. 406.992.7070
 SCJLANDSCAPE.COM

SHEET TITLE: SOUTH PLANTING PLAN
 PROJECT NAME: RIDLEY VILLAGE COURT TOWNHOMES
 SANDPOINT, ID



DESIGNER: MG
DRAWN BY: SS
APPROVED BY: MG
DATE: JUNE 2025
JOB NO: 7141
DRAWING FILE NO: 24-000467 LA00
DRAWING NO: L2.2
SHEET NO: 8 OF 10

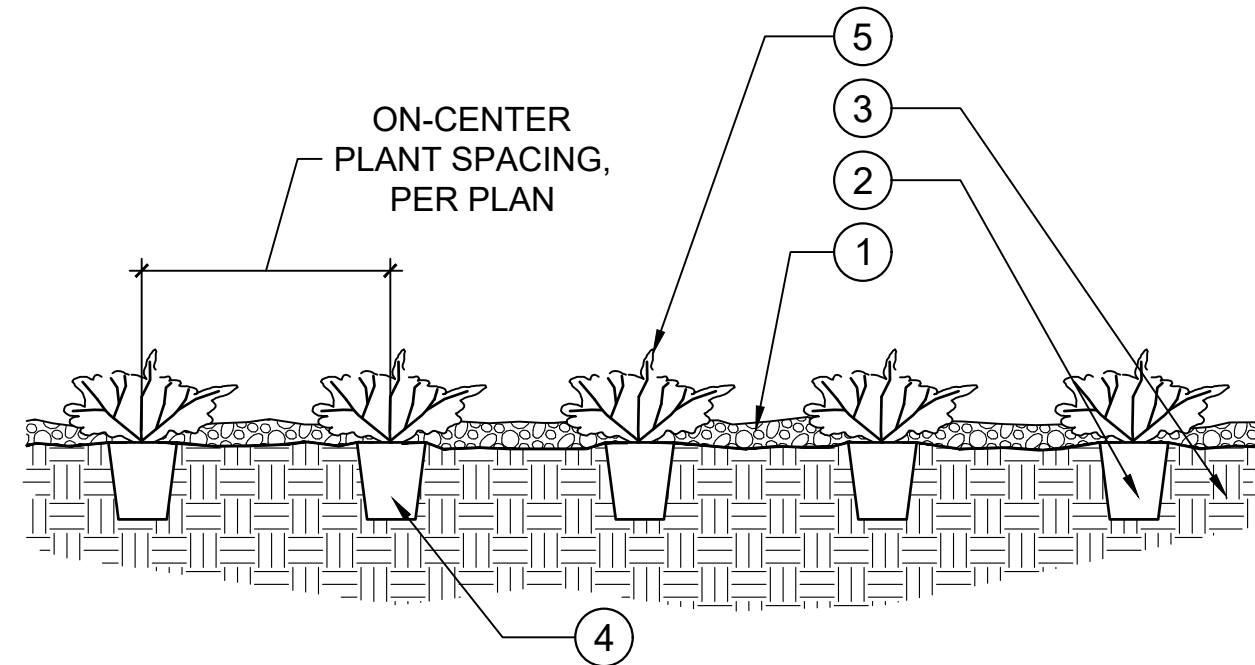


PLANTING NOTES

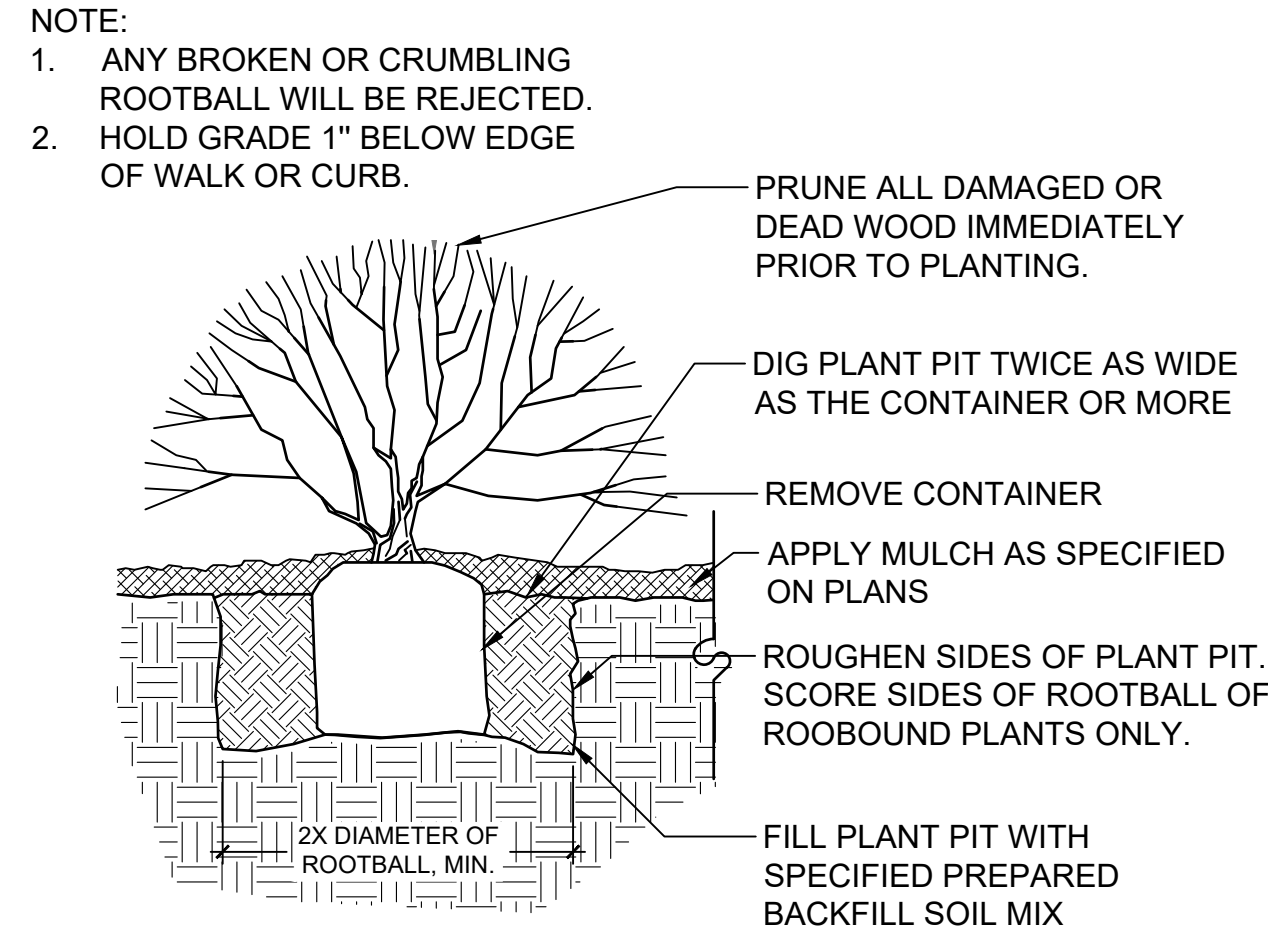
- ALL TREE AND SHRUB LOCATIONS ARE TO BE STAKED ON SITE FOR APPROVAL BY THE LANDSCAPE ARCHITECT PRIOR TO INSTALLATION.
- SUBSTITUTIONS: THE LANDSCAPE ARCHITECT SHALL APPROVE ANY SUBSTITUTION.
- DO NOT PRUNE PLANTS UNLESS DIRECTED TO DO SO BY THE LANDSCAPE ARCHITECT.
- CONTAINER STOCK IS PREFERRED FOR ALL PLANTS. IF CONTAINER STOCK IS NOT AVAILABLE FOR TREES, THEN ALL B&B PLANT MATERIAL SHALL HAVE ALL WIRE, TWINE, OR OTHER CONTAINMENT MATERIAL, EXCEPT FOR 100% HEMP BURLAP, REMOVED FROM THE TRUNK AND ROOT BALL OF THE PLANT PRIOR TO PLANTING. REMOVE THE TOP 2/3 OF THE HEMP BURLAP AFTER PLACING PLANT IN THE PIT.
- PLANTING SOIL FOR ALL PLANTING AREAS:
 - DO NOT STORE BULK MATERIALS NEAR STRUCTURES, OVER EXISTING PLANTING, OVER UTILITIES, WALKWAYS AND PAVEMENTS.
 - PROVIDE EROSION CONTROL MEASURES TO PREVENT DISPLACEMENT OF BULK MATERIALS, DISCHARGE INTO WATERWAYS OR SEWERS, AND AIRBORNE DUST.
 - PREPARING PLANTING AREAS, AND SPREADING SOIL SHALL BE COMPLETED BY THE LANDSCAPE CONTRACTOR AND SUPERVISED BY THE GENERAL CONTRACTOR SO THAT GRADES ARE MET AS NOTED ON THE GRADING PLANS.
 - ALL IMPORTED PLANTING AREA SOIL SHALL BE 2-WAY (60% SAND, 40% COMPOST) TOPSOIL FROM AN APPROVED SOURCE. PROVIDE A 1-QUART SAMPLE FOR APPROVAL PRIOR TO IMPORTING ANY SOIL. TOPSOIL NOT MEETING INDUSTRY STANDARDS FOR COMPOSITION AND NUTRIENTS SHALL BE REJECTED.
 - QUANTITY OF IMPORTED SOIL SHALL BE EQUAL TO A MINIMUM OF SIX (6) INCHES DEPTH IN ALL LANDSCAPE BEDS. THE SOIL INSTALLATION PROCESS OUTLINED BELOW SHALL COMBINE THIS QUANTITY OF IMPORTED SOIL WITH SUBSOIL TO RESULT IN AN EIGHT (8) INCH DEPTH OF PLANTING SOIL.
 - SOIL INSTALLATION: APPLY TWO (2) INCHES OF APPROVED IMPORTED SOIL OVER PREPARED SUBGRADE. TILL IMPORTED SOIL INTO TOP TWO (2) INCHES OF SUBSOIL TO CREATE AMENDED SOIL. APPLY AN ADDITIONAL FOUR (4) INCHES OF IMPORTED SOIL OVER AMENDED SOIL, TO CREATE AN EIGHT (8) INCH LAYER OF PLANTING SOIL. ROLL AND RAKE SMOOTH. ENSURE NO ROCKS OR OTHER DEBRIS EXCEEDING 3 INCHES IN DIAMETER REMAIN.
 - IF PREPARED SOIL OR PREPARED SUBGRADE IS RE-COMPACTED, RESTORE AS DIRECTED BY THE LANDSCAPE ARCHITECT.
- MULCH ENTIRE LANDSCAPE AREA TO A DEPTH OF 3 INCHES WITH MATERIAL MULCH AS SPECIFIED ON PLANS - EITHER ROCK MULCH OR WOOD CHIP MULCH. PROVIDE A 1-QUART SAMPLE OF EACH TYPE OF MULCH FOR APPROVAL PRIOR TO IMPORTING ANY.
- MULCH SHALL NOT BE ABOVE OR MORE THAN 1/2 INCH BELOW ADJOINING SURFACE. MULCH SHALL BE HELD BACK

- 2-3 INCHES FROM THE STEMS AND TRUNKS OF PLANTS.
- ROOT BARRIER SHALL BE INSTALLED ON ALL TREES WITHIN 6' OF A CURB OR SIDEWALK, OR AS INDICATED ON PLANS.
- DURING PLANTING OPERATIONS, KEEP ADJACENT PAVING AREAS CLEAN AND PROTECTED FROM DAMAGE. WORK AREA SHALL BE KEPT CLEAN AND ORDERLY.
- DO NOT REMOVE NURSERY TAGS, STAKES, AND TIES UNTIL DIRECTED TO DO SO BY THE LANDSCAPE ARCHITECT.
- WARRANTY: INSTALLER AGREES TO WARRANTY PLANTING THAT FAILS IN MATERIALS, WORKMANSHIP OR GROWTH WITHIN A WARRANTY PERIOD OF 12 MONTHS FROM THE DATE OF PLANTING COMPLETION.
- PLANT SYMBOLS SHALL DICTATE PLANT COUNT.
- ALL LANDSCAPING SHALL BE PLANTED AND MAINTAINED IN A LIVING CONDITION BY THE CONTRACTOR UNTIL FINAL OWNER ACCEPTANCE.
- FINAL INSPECTION SHALL OCCUR AT THE CONCLUSION OF A 60-DAY MAINTENANCE PERIOD. MAINTENANCE PERIOD SHALL COMMENCE UPON COMPLETION OF ALL LANDSCAPE INSTALLATION ACTIVITIES AND SHALL INCLUDE THE FOLLOWING:
 - MOW LAWNS ONCE PER MONTH.
 - REMOVE ALL WEEDS OVER 1" IN HEIGHT.
 - REPLACE DEAD OR UNHEALTHY PLANTS.
 - ENSURE PROPER FUNCTION OF IRRIGATION SYSTEM.
 - ENSURE ADEQUATE MOISTURE IS DELIVERED TO ALL LANDSCAPE BEDS INCLUDING NON-IRRIGATED AREAS.
 - FERTILIZE ALL SEEDED AREAS AT CONCLUSION OF MAINTENANCE PERIOD.
- COMMERCIAL FERTILIZATION MIX FOR HYDROSEED SHALL BE 10-20-20 SHALL BE APPLIED AT THE RATE OF 10 POUNDS PER 1000 S.F.
- WATER USED FOR HYDROSEEDING SHALL BE FREE FROM OIL, ACID, ALKALI, SALT AND OTHER SUBSTANCES HARMFUL TO GROWTH OF GRASS, AND SHALL BE FROM A SOURCE APPROVED PRIOR TO USE.
- WOOD-CELLULOSE FIBER MULCH FOR USE WITH HYDRAULIC APPLICATION OF GRASS SEED AND FERTILIZER SHALL CONSIST OF SPECIALLY PREPARED WOOD-CELLULOSE FIBER PROCESSED TO CONTAIN NO GROWTH - NO GERMINATION - INHIBITING FACTORS AND DYED AN APPROPRIATE COLOR TO FACILITATE VISUAL METERING OF APPLICATION OF MATERIALS. APPLY MULCH AT THE RATE OF 2,000 POUNDS PER ACRE.

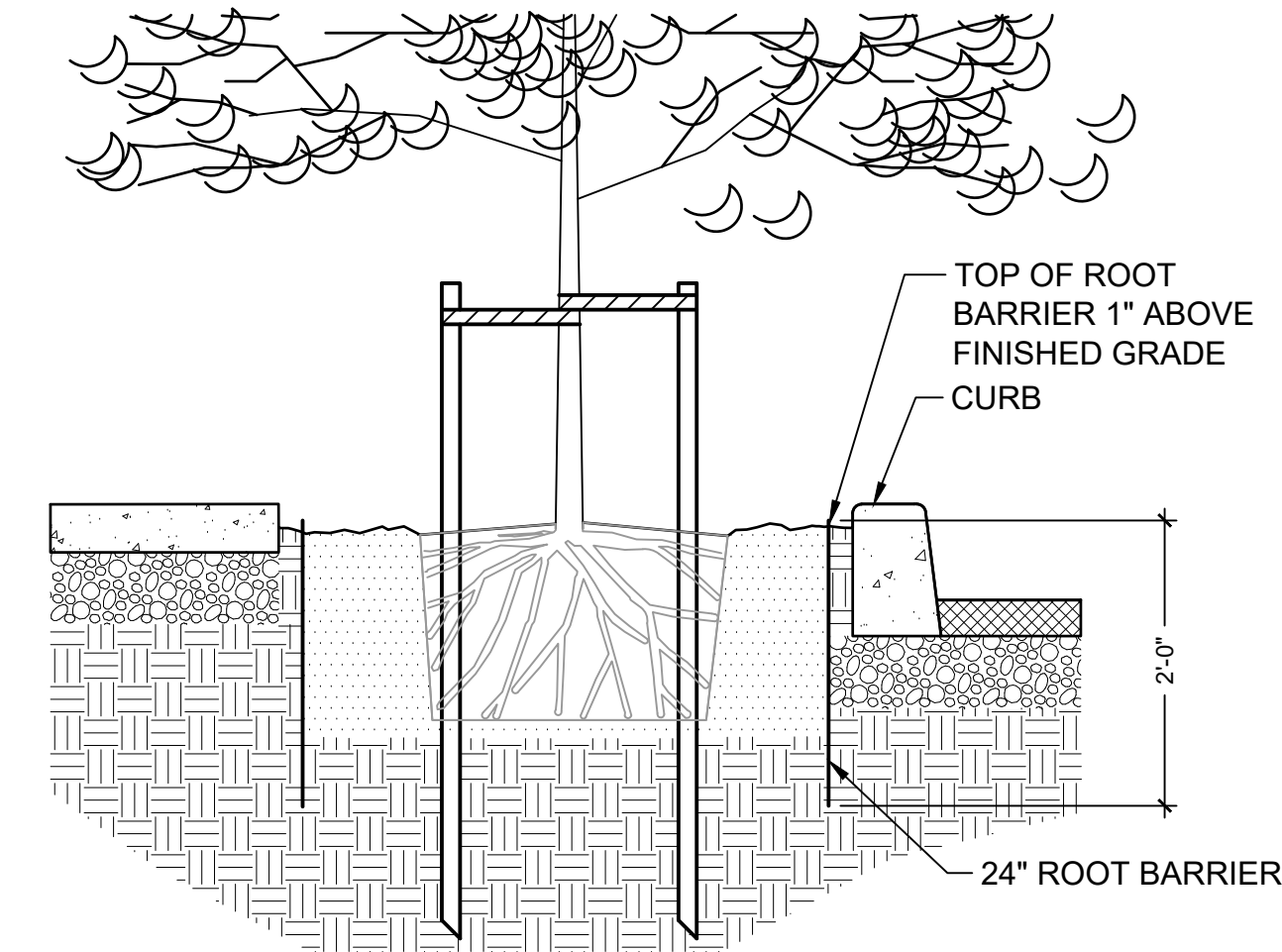
- 3" - 4" MULCH LAYER, AS SPECIFIED ON PLAN. TAKE CARE TO NOT BURY PLANTS WITH MULCH. MULCH LAYER AROUND PLANT BASE MAY BE LESS THAN 3" THICK
- PLANTING PIT TO BE 2X DIAMETER OF CONTAINER
- TOPSOIL, AS SPECIFIED ON PLAN
- REMOVE FROM ALL PACKAGING PRIOR TO PLANTING
- PERENNIAL, GROUNDCOVER OR ORNAMENTAL GRASS, TYP. PER PLAN



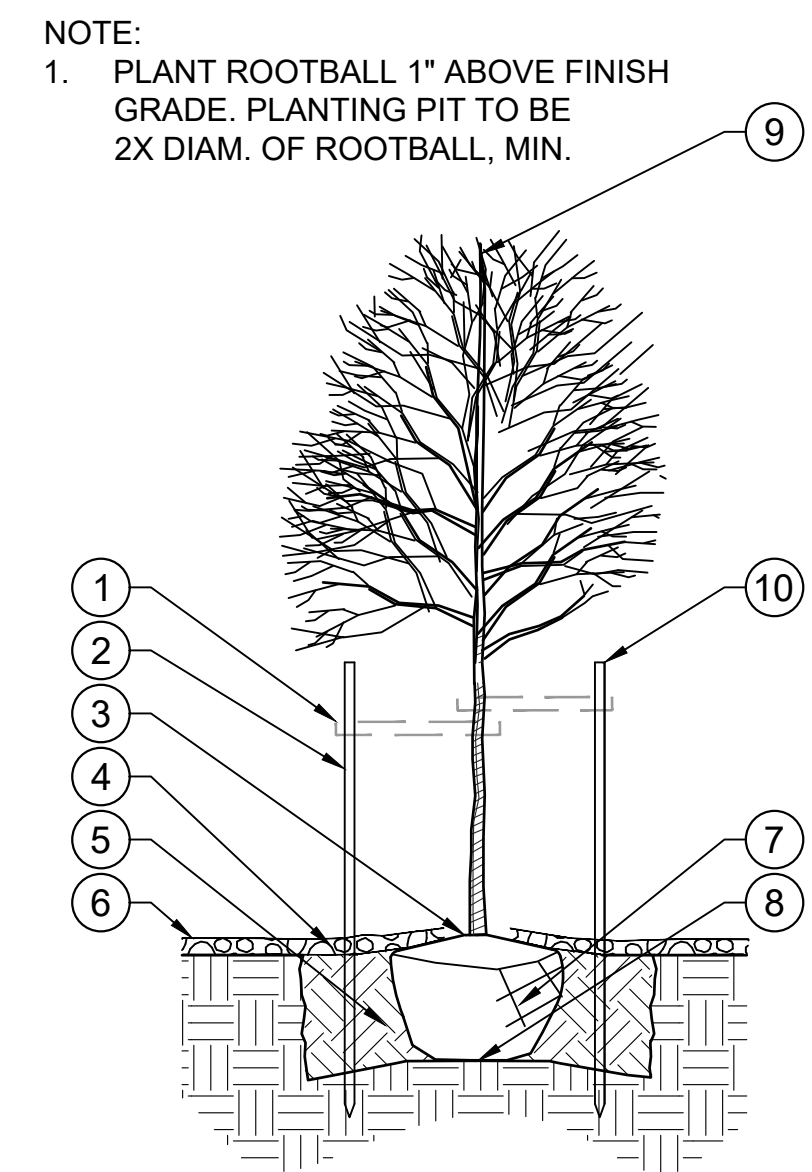
1 PERENNIAL & ORN. GRASS PLANTING
NTS P-RE-RID-51



2 SHRUB PLANTING DETAIL
NTS P-RE-RID-13



3 STREET TREE ROOT BARRIER
3/4" = 1'-0" P-RE-RID-65



4 DECIDUOUS TREE PLANTING
NTS

- NOTE:
- PLANT ROOTBALL 1" ABOVE FINISH GRADE. PLANTING PIT TO BE 2X DIAM. OF ROOTBALL, MIN.
 - INSTALL "DIMEX PROLOCK CHAIN-LOCK TREE TIE" PER MANUF. SPECIFICATIONS
 - 2' X 2' X 8' LONG FIR STAKES. PRESERVATIVE TREATED W/ WOODLIDE OR EQ. PRESTAIN DARK BROWN
 - GRADE @ WHICH TREE GREW IN NURSERY
 - MULCH, PER PLAN. HOLD BACK 2-3" FROM TRUNK
 - PREPARED BACKFILL SOIL MIX
 - FINISH GRADE
 - REMOVE ALL WRAPPINGS, TWINE & WIRE FROM TOP 1/2 OF ROOTBALL AFTER TREE IS IN POSITION
 - SET ROOTBALL ON UNDISTURBED SUBGRADE
 - DECIDUOUS TREES MUST HAVE A STRONG CENTRAL LEADER
 - HEIGHT OF STAKE SHALL BE 5 FT. ABOVE FINISH GRADE

JUL 01, 2025 9:55:05am User: ephicshin@scj.com
 J:\PROJECTS\1744 ATINITY- REAL ESTATE MANAGEMENT, INC.\24-000467 RIDLEY VILLAGE COURT TOWN HOMES CONTRACT\CAD\24-000467 LA00.DWG

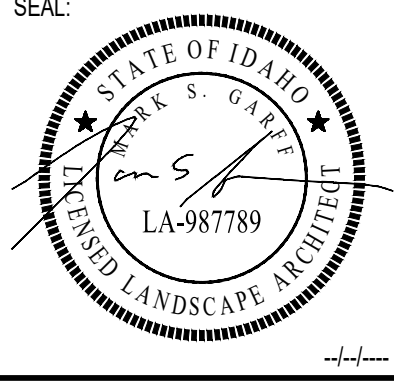
REVISIONS	DATE	BY
△ DRAFT LANDSCAPE SET	06-24-2025	SS
△ PERMIT SET	06-27-2025	SS

SCJ STUDIO
LANDSCAPE ARCHITECTURE

1807 FLORENCE AVENUE SUITE, MT 59701
P. 406.992.7070
SCJLANDSCAPE.COM

PLANTING DETAILS

PROJECT TITLE: **RIDLEY VILLAGE COURT TOWNHOMES SANDPOINT, ID**



DESIGNER:	MG
DRAWN BY:	SS
APPROVED BY:	MG
DATE:	JUNE 2025
JOB NO:	7141
DRAWING FILE NO:	24-000467 LA00
DRAWING NO:	L2.3
SHEET NO:	9 OF 10

