

# PARKS, RECREATION AND TRAILS MASTER PLAN

**2010**

**Last updated on 5/25/10**

“Parks are a cherished resource for Sandpoint residents and outdoor recreation plays an important role in residents’ lives. The goals and policies in this plan seek to increase access to those existing parks, provide for more parks and create viable, multimodal connections between neighborhood parks. All participants in the planning process wanted nearby, accessible parks, recognizing the recreational, social and natural opportunities such features provide. Given the City’s prominent location on one of the region’s most beautiful lakes, goals in this plan support increased public access to the shoreline in the form of parks and trail systems, and an overall growth pattern respecting the importance of Lake Pend Oreille as a public space.”

– Sandpoint Comprehensive Plan 2009



## ACKNOWLEDGEMENTS

---

### **Special Thanks**

We would like to thank the many citizens, staff and community groups who provided extensive input for the development of the Parks, Recreation and Trails Master Plan. The project was a true community effort, anticipating that this plan will meet the needs and desires of all residents of our growing city.

### **City Staff**

Kim Woodruff, Parks and Recreation Director

Jason Wiley, Recreation Supervisor

Austin Hull, Parks Supervisor

Kami Omodt, Parks and Recreation Administrative Assistant

Tess Howell, Master Plan Coordinator

Ketti Wehrle, Recreation Intern

Jeremy Grimm, Planning Director

Kody Van Dyk, Public Works Director

Bruce Robertson, Enforcement Officer

### **Mayor**

Gretchen Hellar

### **City Council**

John Reuter, Council President

Stephen Snedden

Carrie Logan

Marsha Oglivie

Jamie Davis

Justin Schuck

### **Parks and Recreation Commission**

Sue Austin, Chair

Wendy Nieman

Colin Burnett

Jim DuBuisson

Mariah Breakey

Tom Albertson

**Community Groups**

Idaho Conservation League  
Idaho Native Plant Society  
Kinderhaven  
North Idaho Bikeways  
Sandpoint Farmer's Market  
Sandpoint Little League  
Sandpoint Senior Center  
Sandpoint Transition Initiative

**Supporting Partners**

Ashoka's Community Greens  
CTA Architects

**Planning Team**

Mayor Gretchen Hellar  
Kim Woodruff, Parks and Recreation Director  
John Reuter, Council President  
Tess Howell, Master Plan Coordinator  
Kami Omodt, Administrative Assistant



# TABLE OF CONTENTS

---

<b>CHAPTER 1: INTRODUCTION.....</b>	<b>1</b>
A. Introduction.....	1
<b>CHAPTER 2: PUBLIC INVOLVEMENT .....</b>	<b>3</b>
A. Introduction.....	3
B. Community Meetings.....	3
C. Resident Survey .....	4
D. Interest Group Meetings .....	5
E. Community Workshop.....	5
<b>CHAPTER 3: SUSTAINABILITY and ZERO WASTE .....</b>	<b>7</b>
A. Introduction.....	7
B. Storm Water.....	7
C. Soils.....	7
D. Vegetation and Community Gardens .....	8
E. Materials.....	8
F. Human Health and Well Being.....	9
G. Energy Independence .....	9
H. Urban Design and Green Building.....	9
I. Economic Sustainability .....	9
<b>CHAPTER 4: PARK LAND NEEDS.....</b>	<b>10</b>
A. Introduction.....	10
B. Park Classification.....	11
C. Level of Service Standard.....	11
D. Facilities Analysis .....	12
E. Population Density Analysis.....	13
F. Proximity Analysis.....	17
G. Park Land Needs Goals and Strategies.....	19
<b>CHAPTER 5: PARK GOALS AND STRATEGIES .....</b>	<b>20</b>
A. Introduction.....	20
B. Community Parks.....	21
CITY BEACH .....	21
COMMUNITY HALL .....	22
C. Neighborhood Parks .....	23
3 <sup>RD</sup> AVENUE PIER .....	23
HICKORY STREET PARK.....	23
LAKEVIEW PARK .....	24
MAIN AND WASHINGTON EASEMENT (unnamed) .....	25
D. Special Use Areas .....	25
CITY BEACH MARINA.....	25
CENTENNIAL PARK .....	25
CITY HALL .....	26
CITY PARKING LOT.....	26

FARMIN PARK .....	27
GREAT NORTHERN PARK .....	28
JEFF JONES TOWN SQUARE .....	28
OLD 9 <sup>TH</sup> GRADE CENTER .....	29
OUTDOOR SHOOTING RANGE .....	29
PINE STREET PARK.....	30
TRAVERS PARK .....	31
WAR MEMORIAL FIELD .....	31
WINDBAG MARINA.....	32
E. Natural Parks .....	32
CEDARS PARK.....	32
HUMBIRD MILL PARK (TRAILHEAD) .....	33
MICKINNICK TRAIL HEAD.....	33
F. Recommended Parks .....	34
5 <sup>th</sup> AVENUE FROM LARCH TO CEDAR.....	34
ISLAND: MAIN AND BOYER.....	34
ISLAND: MAIN AND ELLA.....	34
ISLAND: MAIN AND FLORENCE .....	35
ISLAND: THE WHISTLE .....	35
MAIN STREET RIGHT-OF-WAY.....	35
GRAY WAY .....	36
STREET END RIGHT-OF-WAYS.....	37
Street End: Ella .....	37
CITY SEWER PLANT.....	38
HIGHWAY 95 BY-WAY AREAS OF MANAGEMENT .....	38
DOG-FRIENDLY PARKS.....	38
ART IN PARKS .....	39
<b>CHAPTER 6: RECREATION .....</b>	<b>40</b>
A. Introduction.....	40
B. Inventory of Programs Offered .....	40
C. Promotion, Marketing and Program Evaluation .....	42
D. Recreation Goals .....	42
<b>CHAPTER 7: TRAILS .....</b>	<b>45</b>
A. Introduction.....	45
B. Benefits .....	45
C. Trails and Pathways Defined .....	45
D. Existing Trails and Pathways .....	46
E. Recommended Trails and Pathways .....	47
F. Goals and Strategies .....	48
<b>CHAPTER 8: IMPLEMENTATION.....</b>	<b>50</b>
A. Introduction.....	50
B. Communication Plan .....	50
C. Staffing.....	50

D.	Financing .....	50
E.	City Reports .....	50
F.	Legislation.....	50
G.	Americans with Disabilities Act (ADA) .....	50
<b>APPENDICES .....</b>		<b>51</b>
Appendix A.	Resident Survey Questions .....	51
Appendix B.	Survey Results.....	54
Appendix C.	Survey Comment Responses .....	64
Appendix D.	Community Meeting Posters.....	74
	<i>Poster from the July 2<sup>nd</sup>, 2009 Meeting: .....</i>	<i>74</i>
	<i>Poster from the August 4<sup>th</sup>, 2009 Meeting: .....</i>	<i>75</i>
Appendix E.	Radio Ads.....	76
	<i>July 2<sup>nd</sup>, 2009 Community Meeting advertisement text: .....</i>	<i>76</i>
	<i>August 4<sup>th</sup>, 2009 Community Meeting advertisement text: .....</i>	<i>76</i>
Appendix F.	Presentation Slides from Community Meetings .....	77
	<i>July 2<sup>nd</sup>, 2009 Community Meeting – Sustainability Presentation Slides.....</i>	<i>77</i>
	<i>August 4<sup>th</sup>, 2009 Community Meeting – Future Park Ideas Presentation Slides.....</i>	<i>79</i>
Appendix G.	Interest Group Meeting Questions and Answers .....	82
Appendix H.	Community Workshop CTA Charette Results.....	89
Appendix I.	Comprehensive Plan – Recreation Chapter .....	91



## CHAPTER 1: INTRODUCTION

---

### A. Introduction

In 2009, the City of Sandpoint updated its existing Comprehensive Plan, originally adopted in 1977. The Comprehensive Plan is intended to guide Sandpoint and its vicinity's development and growth patterns for the next 20 years. As stated in the Comprehensive Plan, "participants in the comprehensive planning process indicated strong support for Sandpoint's parks system. Park and recreation facilities – whether improvements to existing facilities or new or expanded ones – consistently rated as a top priority. Based on comments received, parks and recreation needs include more access to Lake Pend Oreille, more urban parks, and more viable, multimodal connections between existing and future parks." An extensive outreach process was an integral part of the planning process to capture the preferences of Sandpoint residents.

The City of Sandpoint Parks, Recreation and Trails Master Plan is a detailed expansion on the Recreation Chapter of the Comprehensive Plan, created to serve as a living, dynamic tool providing a vision for future operational and policy decisions. The planning process involved thorough public involvement in order to accurately meet the needs of the community.

Parks are a cherished resource for Sandpoint residents and outdoor recreation plays an important role in residents' lives. The goals and strategies in the Parks, Recreation and Trails Master Plan seek to increase access to those existing parks, provide for more parks, create viable, multimodal connections between neighborhoods and parks, and expand offered recreation programs.

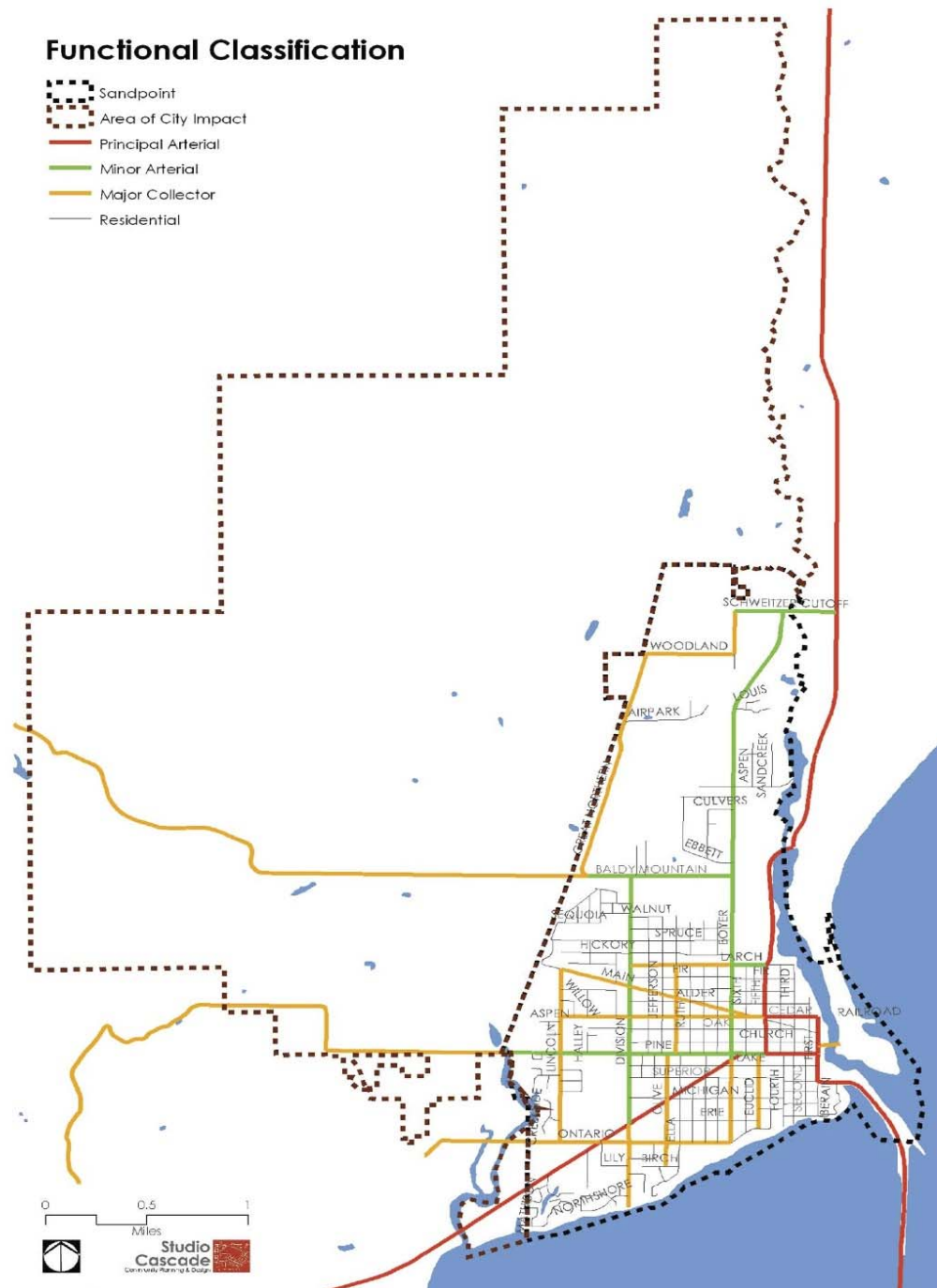
As parks and trails are maintained and upgraded and new ones are planned, all decisions will focus on sustainability. The driving force for this plan is to become zero-waste in the next 20 years. The goals and strategies defined in this document ensure that sustainability concerns are incorporated into the Parks and Recreation Department's decision-making processes and daily activities/operations. Sustainability and zero-waste are thoroughly defined in Chapter 3.

Given the City's prominent location on one of the region's most beautiful lakes, this plan also supports increased public access to the shoreline in the form of parks and trail systems, preserving and increasing water quality, and an overall growth pattern respecting the importance of Lake Pend Oreille as a public space.

The planning area for this plan is consistent with the planning area used for the 2009 Sandpoint Comprehensive Plan update, which includes the entire City area and the Area of City Impact (ACI). A map of the City limit lines and ACI boundaries is included on the following page (page 2).



Figure 1. Department of Parks and Recreation logo



Map 1. City boundary lines and Area of City Impact (ACI)

## CHAPTER 2: PUBLIC INVOLVEMENT

---

### **A. Introduction**

The Parks, Recreation and Trails Master Plan is based on an extensive public involvement process. This community input was used to assess community needs and desires and to develop goals to guide the planning effort. Many opportunities for public participation were available, including two community meetings, a resident survey, multiple interest group meetings, and a community workshop.

### **B. Community Meetings**

Two public meetings were held at the Community Hall where specific recommendations and actions for improving and developing Sandpoint's Park, Recreation, and Trails system were discussed. The meetings were advertised on local radio stations the day before and the day of each meeting. Posters were also hand delivered to local businesses and community bulletin boards/kiosks the week prior to each meeting. See Appendix D for poster details and Appendix E for radio advertisement details.

#### *Meeting #1 – July 2<sup>nd</sup>, 2009*

The goal of this meeting was to introduce the goal of sustainability to the community, to find out likes and dislikes about our parks, and to determine trail needs within the community. A total of 18 people attended the meeting, which started at 6:30 pm and ran for about 90 minutes. To start the meeting, there was a brief presentation on sustainability. The presentation highlighted ways parks can become more sustainable and the environmentally friendly methods currently used in Sandpoint's parks. To see the slides from this presentation, please see Appendix F. After the presentation the attendees broke into two groups – trails and parks. The parks group discussed wants and needs and determined top priorities for investment.

Top priorities (in decreasing importance – by votes)

- Sustainability (no impact, resource efficient) – 5 votes
- Waterfront (riparian protection, access, education) – 5 votes
- Community Gardens – 4 votes
- Community Parks (small, pocket parks) – 4 votes
- Land Acquisition (high density or underserved) – 2 votes
- Maximize existing properties for multi-functionality – 2 votes
- Natural Amphitheatre (preferable waterfront adjacent) – 2 votes
- The trails group discussed trail wants and needs and marked possible trail ideas on a geographic information system (GIS) map of the City of Sandpoint and area of City impact (ACI). After marking the desired trails the group summarized community trail needs.

Top needs (in no particular order):

- Construct trails in an environmentally friendly manner
- Provide pedestrian and bicycle commuter routes throughout city
- Provide safe routes to schools
- Provide trails that are readily accessible from all neighborhoods
- Develop trail partnerships
- Provide trail maintenance
- Ensure that trails are well marked throughout the city
- Trails providing water access

## *Meeting #2 – August 4<sup>th</sup>, 2009*

The turnout for this meeting was much lower than expected, most likely due to excellent summer weather and family vacations. Only five community members attended. The goal of the second meeting was to discuss more specific park ideas to determine the pros and cons of the proposed trails from the previous meeting. This meeting started with a brief presentation about future park ideas. Many pictures were used to visually show attendees various ways we could implement people's ideas. For example, developing pocket parks and water access where streets end at the river and developing a trail along the right of way along Main Street. To see the slides from this presentation please see Appendix F. Due to the small number of attendees, the rest of the meeting included a small discussion about park waterfront, park connectivity with neighborhoods, and street ends.

### **C. Resident Survey**

A community survey, designed to elicit information about recreation interests, behavior, attitudes and participation of households in Sandpoint, was conducted between August and December 2009. The survey was mailed to 3,661 City of Sandpoint residences selected from United States Postal Service mailing routes. For the areas in city limits that the mailing routes did not include, 285 surveys were hand delivered. The survey was directed toward households and not individuals. As of April 15, 2010, a total of 716 surveys had been returned, yielding a return rate of 18.1%. Over 1705 citizens were represented by returned surveys. See Appendix A for the survey questions and Appendix B for a complete tabulation of the survey results.

Key findings from those responding to the recreation survey are

- *Most respondents use parks*
  - *9.9% don't use them due to age or disability*
  - *8.7% of residents don't use parks due to lack of safe route to parks*
- *There is a strong need for multi-use trails and improved multi-modal access in Sandpoint*
  - *33.5% want running trails*
  - *54.5% want biking trails*
  - *46.2% want hiking trails*
  - *29.3% want XC skiing trails*
  - *84.5% believe bicycling is important or very important*
  - *Pedestrian amenities need to be improved*
- *There is a strong need for dog-friendly parks, 43.6% of respondents desire dog parks in Sandpoint*
  - *69.8% of respondents think access to dog walking/playing is important or very important*
  - *Only 20.1% of respondents think access to dog walking/playing is unimportant or very unimportant*
- *The top for areas in which the City should focus its Parks and Recreation efforts are: acquiring land for future parks, maintaining existing parks and facilities (and with minimal environmental impact), and developing new parks on current city owned land. Only 6.3% of respondents felt that no additional parks or natural areas were needed.*
- *The types of parks the community most needs are:*
  - *Parks with lake or river frontage (79.5% of respondents said swimming is important or very important)*
  - *Off-leash dog parks*
  - *Natural areas (88% of respondents said nature enjoyment is important or very important)*
  - *Linear trail corridors*



- *Not as needed in the community are:*
  - *Small neighborhood parks*
  - *Sports facilities*
  - *Large multi-use parks that serve the whole community*
- *There is a need for more covered group picnic shelters and community gardens*
- *Most respondents don't know about the availability of recreation programs. Many respondents were unaware of sources of information about recreation programs, i.e. website, booklet, newsletter.*
- *Respondents feel there aren't enough recreational camp, educational, aquatic, or senior activities available*
- *51.3% of respondents said they participate in recreation programs more than one time per year*
- *The majority of respondents are 37+ years old*
- *63.5% of respondents have lived in Sandpoint for over 10 years*
- *90.2% of respondents live in single-family homes*
- *75.6% of respondents are homeowners*

See Appendix C for the handwritten comments left on the surveys from respondents.

#### **D. Interest Group Meetings**

These short meetings were scheduled with a variety of local groups including Farmer's Market, Sandpoint Little League, Sandpoint Transition Initiative, Idaho Native Plant Society, North Idaho Bikeways, Kinderhaven, and Sandpoint Senior Center. The group's needs and desires were discussed with a City of Sandpoint staff member and included in the planning process. The meetings were held over a period of time starting mid August and ending mid September. See Appendix G for a summary of each interest group meeting.

Common needs/goals concluded from the meetings:

- Acquire more park land
- More trail to park connectivity
- Educational opportunities/aspects in parks
- More community gardens and/or edible landscapes
- More native plantings
- More shaded and benched areas
- More signage – educational, historical, informational
- Move toward sustainable parks

#### **E. Community Workshop**

To gain input on the visions and priorities for Sandpoint's parks, recreation, and trails system, a small, public visioning session was held on April 22, 2010 with CTA Architects. This design workshop was held in conjunction with the Earth Day Festival at the Sandpoint Event Center. Five citizens attended the workshop, in addition to City representatives, Parks and Recreation staff and CTA Architects. Participants were asked to envision small neighborhood parks and discuss how they would like to see these small parks function, as well as what type of amenities should be present. Included in this discussion were neighborhood parks that provide water access and how these would function. CTA Architects helped sketch the ideas associated with the discussion, which can be seen in Appendix H.

The Main and Washington Easement was the one specific location discussed at this meeting. The overall vision was for a passive park with intimate space for leisurely activities such as reading, playing chess, eating lunch, etc. To incorporate the idea of providing local food for the neighborhood, berry bushes were suggested instead of an entire community garden concept.

Neighborhood park concepts:

- Passive spaces
- Drinking fountains
- Berry bushes of various kinds
- Chess/checkers boards
- Native plants/xeriscaping
- On-leash dog friendly

Water access park concepts:

- Kayak load/unload
- "Walk-in/Bike-in" access
- Limited parking, time limits
- Natural shade
- Small picnic table or bench

## CHAPTER 3: SUSTAINABILITY and ZERO WASTE

---

### **A. Introduction**

Sustainability is a broad term that generally means that a person or society lives within the means of what the Earth can provide over a long term. Sustainability meets the needs of the present without compromising the ability of future generations to meet their own needs.

Conventional processes in society are “cradle-to-grave,” meaning materials are moved in a linear fashion rather than through one of nature’s endless cycling and recycling processes. The linear process moves materials that support life from their sources through human consumption. Ultimately, the atmosphere, rivers, lakes, ocean, and landscape become polluted. This one-way process also depletes and destroys the natural landscape on which it depends.

A sustainable society does not rely extensively on non-renewable resources as a basis for its economy. A sustainable society reduces consumption of renewable resources to levels that can be replenished by nature and works toward “cradle-to-cradle” processes to replace current “cradle-to-grave” processes. A “cradle-to-cradle” process is one that is continually self-renewing, a cyclic flow that continually regenerates materials that support life. As stated in the 2009 City of Sandpoint Comprehensive Plan, the Department of Parks and Recreation must work toward a zero waste or “cradle-to-cradle” system.

The City of Sandpoint Parks and Recreation Department values environmental sustainability by making decisions that help maintain and preserve our natural and developed resources. Decision-making in a sustainable society must consider economic stability, environmental stability and the social equity aspects of a particular decision.

Information from the Sustainable Site Initiative website, City of Sacramento Department of Parks and Recreation Sustainability Plan, and the Portland Parks and Recreation Sustainability Plan were used to draft the guidelines in the following sections. The Sustainable Sites Initiative is an interdisciplinary effort that creates voluntary national guidelines and performance benchmarks for sustainable land design, construction and maintenance practices. The rest of this chapter will detail areas in which this plan will focus its sustainability efforts. By understanding all the aspects of sustainability the Sandpoint Department of Parks and Recreation will be able to better reach their goal of becoming a zero-waste system.

### **B. Storm Water**

Common practice in many societies is to treat rainfall as waste, to be transported from rooftops and paved surfaces directly to sewer systems, increasing costs in storm water management. A sustainable approach to storm water management is to harvest it on site and to mimic nature’s capacity to store, filter, and clean water. This section should be updated to reflect the Sandpoint Storm Water Master Plan once completed.

Master Plan focus areas for sustainable storm water management:

- Manage and clean water on-site
- Design storm water features to be accessible to site users
- Design the site to minimize or eliminate use of potable water for irrigation
- Increase the use of permeable pavements in parking lots

### **C. Soils**

Soil quality plays a significant role in vegetation health and is often undervalued during conventional development. During standard construction a frequent consequence is compaction of the soil. Compaction destroys the soil structure that allows for infiltration of air and water. If compacted soil is not restored, sediment runoff volume and flooding potential increase. Healthy soils allow rainwater to penetrate, preventing excess runoff, sedimentation, erosion, and flooding. Soils also manage water by cleaning, storing and recharging groundwater.

Master Plan focus areas for sustainable soil practices:

- Preserve and protect healthy soils
- Improve health of degraded soils
- Maximize compost of green waste within the park system
- Use plant trimmings as compost to nourish soils

#### **D. Vegetation and Community Gardens**

Vegetation helps with water management, soil quality, and pollution filtration. Vegetation naturally manages and filters storm water and recharges groundwater. Healthy vegetation maintains soil structure, prevents erosion, and contributes to soil organic matter. Trees and vegetation moderate the climate of the world and provide a breathable atmosphere through the evaporation, transpiration and the uptake and storage of carbon. Urban trees filter air pollutants from vehicles, factories, etc.

Master Plan focus areas for sustainable vegetation:

- Protect and use existing vegetation
- Use vegetation that promotes a regional identity and sense of place
- Use vegetation to lower energy consumption
- Manage landscapes effectively to reduce potential damage
- Reduce overall percentage of turf in the parks system
- Implement “edible landscape” demonstration gardens at select parks
- Increase community gardens in select parks

#### **E. Materials**

Materials are natural resources that have been extracted, manufactured, and/or processed for human use. Materials must be properly selected in order to minimize building related waste, carbon dioxide emissions, and urban heat island effects. Designs need to incorporate as many existing site materials as practical.

Master Plan focus areas for sustainable material resources:

- Use existing materials
- Reduce consumption of material resources
- Purchase local and sustainably-produced plants and materials
- Consider the full life cycle of materials
- Work toward zero net waste by compensating for waste still being created by absorbing waste from other departments/City residents
- Increase recycling of used materials
- Reduce urban heat island effect

## **F. Human Health and Well Being**

The natural environment plays an important role in human health and well-being. Site designs often ignore the human benefits of healthy, green environments. Sometimes they fail to provide opportunities for physical activity, restorative and aesthetic experiences, and social interaction. Healthy ecosystems are the source of the less tangible, but very real and measurable benefits that humans derive from a good relationship with nature. Humans want to feel safe, comfortable, and welcome in nature.

Master Plan focus areas for human health and well being:

- Make sites user friendly
- Focus on natural views
- Educate site users and keep culture and history alive
- Provide spaces for mental restoration, social interaction, and physical activity
- Provide opportunities for public education and public involvement on gardening and healthful eating

## **G. Energy Independence**

Master Plan focus areas for energy independence:

- Improve energy efficiencies in current buildings and maintenance practices
- Expand use and generation of renewable local energy at parks and facilities

## **H. Urban Design and Green Building**

Master Plan focus areas for urban design and green building:

- Replace obsolete and energy resource inefficient infrastructure
- Obtain LEED certifications on all new buildings
- Purchase recycled materials when possible for benches, signs, mutt mitts, etc.

## **I. Economic Sustainability**

Master Plan focus areas for economic sustainability:

- Develop Windbag Marina for self-sustaining revenue and to fund sustainability initiatives along with other capital projects
- Ensure all projects are economically sustainable and fiscally prudent
- Prioritize projects that can reduce costs or increase revenue while increasing sustainability



**Figure 2. The Travers/Centennial/Great Northern Sports Complex features edible landscaping (fruit trees), uses water from Chuck Slough for irrigation, and is named for historical significance.**

## CHAPTER 4: PARK LAND NEEDS

### A. Introduction

The City of Sandpoint contains a number of outdoor recreational opportunities for both the local residents as well as tourists visiting the area. Park space and facilities are a high priority for the residents of Sandpoint. As the population of Sandpoint continues to grow, community park facilities will be needed to serve future development. The City of Sandpoint determined the community's needs for park land based on results from the public involvement process, level of service evaluation and an in depth analysis of the City's current public facilities.

Sandpoint has approximately 85 acres of parks within the city and the Area of City Impact (ACI) with individual sizes ranging from less than 0.25 acres to over 24 acres, summarized below in Table 1 by park category. Although some parks fit into more than one category, they are not listed more than once.

A detailed explanation of the parks, their sizes, available facilities and activities, and priorities for the future can be found in Chapter 5

Table 1. Park Inventory		
Park Facility	Acreage	Location
<i>Community Parks</i>		
City Beach	22.10	102 Bridge Street
Community Hall	0.7	204 S 1 <sup>st</sup> Street
<i>Neighborhood Parks</i>		
3 <sup>rd</sup> Avenue Pier	0.26	South 3 <sup>rd</sup> Avenue
Hickory Street Park	2.29	812 Hickory Street
Lakeview Park	12.0	901 Ontario Street
Main and Washington Easement	0.11	Main and Washington
<i>Special Use Areas</i>		
City Beach Marina	N/A	Sandpoint City Beach
Centennial Park	7.26	Lincoln Street
Farmin Park	0.28	3 <sup>rd</sup> and Main Street
Great Northern Park	7.19	North Lincoln Street
Jeff Jones Town Square	0.30	306 N 3 <sup>rd</sup> Avenue
Old 9 <sup>th</sup> Grade Center Field	1.54	Hwy 200 and Boyer
Outdoor Shooting Range	6.0	113 Turtle Rock Road
Pine Street Park	1.93	1114 Lake Street
Travers Park	17.8	2102 Pine Street
War Memorial Field	4.64	801 Ontario St
Windbag Marina	N/A	
<i>Natural Parks</i>		
The City doesn't own any developed natural parks		
<b>Total Park Acreage</b>	<b>84.4</b>	

## B. Park Classification

Park land is classified to assist in planning for a community's recreation needs. The Sandpoint park system is classified by park function, allowing the community to evaluate its needs and plan more easily, providing a more efficient, cost effective and usable park system that minimizes conflicts between park users and neighbors.

Sandpoint's classifications for existing parks include:

**Community Parks.** Community parks are planned to provide active and structured recreation opportunities, as well as passive and non-organized opportunities for individual and family activities. Community parks generally include facilities that attract people from a large geographic area and require support facilities, such as parking and restrooms. Community parks often have sport fields or similar facilities as the central focus of the park.

**Neighborhood Parks.** Neighborhood parks are a combination playground and park, designed primarily for non-supervised, non-organized recreational activities. They are generally small in size and intended to serve nearby residents, who are intended to arrive mainly by foot or bicycle. Typically, facilities include a children's playground, picnic areas, pathways, open grass areas for passive use, and sometimes sports facilities such as outdoor basketball courts or baseball/softball fields.



Figure 4. Hickory Street Park Entrance

**Pocket Parks.** A subcategory of neighborhood parks is pocket parks, very small, passive parks that typically comprise of only one or two lots within a block. Serving the immediately local population, pocket parks provide space where people can stop to relax, read, eat lunch, or meet friends. They can bring shade and quiet and often are located in unexpected places. Communities usually come together to decide upon the pocket parks' design and uses.

**Special Use Areas.** Special use areas are miscellaneous park lands or stand-alone recreation sites designed to support a specific, specialized use. Some of the facilities in this classification can include sports field complexes, community centers, community gardens, aquatic centers or sites occupied by buildings.

**Natural Parks.** Natural parks are sites primarily left in a natural state and intended for nature-oriented leisure activities. This type of land often includes environmentally sensitive areas such as wetlands, steep hillsides, wildlife habitats, stream and creek corridors, or lands containing unique and/or endangered plant species. Natural park preserves may serve as trail corridors, and generally support only passive recreation. Active recreation that occurs is usually secondary use.

## C. Level of Service Standard

As stated in the City of Sandpoint Development Impact Fee Program/Capital Improvement Plan from 2005, the performance standard for park facilities is 8 acres of parkland per 1000 population. This standard was based on information provided by the Parks and Recreation Director regarding existing conditions and average standards for neighboring cities.



Figure 3. Covered pavilion at City Beach, one of Sandpoint's community parks.



Figure 5. Community Hall



## D. Facilities Analysis

The information used to analyze park facilities was obtained from the City of Sandpoint Development Impact Fee Program/Capital Improvement Plan as well as communication and conversations with the Parks and Recreation Director. The following will provide an updated inventory of existing facilities (based on the above defined level of service), adequacy of the facilities, and the future demand for additional facilities for park classification. This portion of the plan will be updated as the City of Sandpoint Development Impact Fees are also updated.

### *Inventory of Existing Facilities*

The City of Sandpoint owns and maintains 16 different public parks and public facilities, each of unique size and amenities totaling 84.4 acres. Table 1 (page 8) provides a summary of park acreage, classification, and location.

### *Adequacy of Existing Facilities*

The adequacy of existing facilities is determined by evaluating the performance standard and the existing population. Based on a performance standard of 8 acres per 1,000 population and a current population of 8,228 people, the required park acreage needed to satisfy existing park demand is 65.82 acres.

Existing population	x	Performance Standard	=	Existing Demand
8,228	x	8 acres/1000 Population	=	65.82 acres

Based on current demand, there is a surplus of 18.58 acres of park facilities. Therefore, no additional facilities are necessary to meet current demand.

Existing Park Facilities	-	Current Demand	=	Park Surplus
84.4 acres	-	65.82 acres	=	18.58 acres

### *Future Demand for Facilities*

The same logic is used to determine build out demand. Based on a build out population of 37,170 people, there will be a build out demand of 297.36 acres. Since there are 84.4 acres of existing park facilities, there will be an additional need for 212.96 acres of park facilities to meet the demand created by the future population of Sandpoint.

Build out Population	x	Performance Standard	=	Build out Demand
37,170 people	x	8 acres/1000 Population	=	297.36 acres
Build out Demand	-	Existing Park Facilities	=	Future Demand
297.36 acres	-	84.4 acres	=	212.96 acres

The City is planning to develop Cedars Park (2.56 acres), the Mickinnick Trail Head (10 acres) and Humbird Mill Park (2 acres), all of which are currently City owned potential park land. The City is also considering the conversion of an additional 0.86 acres of highway district owned land (dead end streets) to pocket parks providing waterfront access. The Main Street right-of-way (5 acres) from Boyer Avenue to Division Street is under consideration for conversion to a long neighborhood park and trail route. Therefore, this assumes development of the following:

Cedars Park:	2.56 acres
Humbird Mill Park:	2.0 acres
Main Street Right of Way:	5.0 acres
Mickinnick Trail Head:	10.0 acres
Waterfront Pocket Parks:	0.86 acres

**Total Acreage: 20.42 acres**

The land identified above has yet to be developed as a park, but this study assumes the conversion and development will occur. Therefore, there is a need to acquire 192.54 acres of park land, 20.42 acres less than the future demand. Therefore, the total future park need for acquisition and construction is as follows:

Future Park Land Acquisition:	192.54 acres
Future Park Land Construction:	212.96 acres



Since parks are classified into four main categories, the future demand for each type of park was calculated in order to maintain the level of service standard for each park classification. As calculated previously, a total of 212.96 acres is needed to meet future demand. Parks and Recreation classifies its parks into four main categories. The need for parks in each category is based on a calculated percentage for the desired acreage of each park type. The percentages of each park category are subject to change based on professional opinion.

Community Parks:	5% of future build out demand
Neighborhood Parks:	10% of future build out demand
Special Use Areas:	10% of future build out demand
Natural Parks:	75% of future build out demand

#### *Community Parks*

Currently, the City owns 22.8 acres classified as community parks. To meet the future construction demand 10.65 acres are needed for community park development.

Future park construction	x	Park Category %	=	Future Demand
212.96 acres	x	5%	=	10.65 acres
Future Demand	-	Available (undeveloped) land	=	Needed Land
10.65 acres	-	0 acres	=	<b>10.65 acres</b>

#### *Neighborhood Parks*

Currently, the City owns 14.66 acres classified as neighborhood parks. To meet the future demand, 15.43 acres are needed for neighborhood park development.

Future park construction	x	Park Category %	=	Future Demand
212.96 acres	x	10%	=	21.29 acres
Future Demand	-	Available (undeveloped) land	=	Needed Land
21.29 acres	-	5.86 acres	=	<b>15.43 acres</b>

#### *Special Use Areas*

Currently, the City owns 46.94 acres classified as special use areas. To meet the future demand, 19.29 acres are needed for special use area development.

Future park construction	x	Park Category %	=	Future Demand
212.96 acres	x	10%	=	21.29 acres
Future Demand	-	Available (undeveloped) land	=	Needed Land
21.29 acres	-	2 acres	=	<b>19.29 acres</b>

#### *Natural Parks*

Currently, the City owns zero acres that are classified as natural parks. To meet the future demand, 147.16 acres are needed for natural park development.

Future park construction	x	Park Category %	=	Future Demand
212.96 acres	x	75%	=	159.72 acres
Future Demand	-	Available (undeveloped) land	=	Needed Land
159.72 acres	-	12.56 acres	=	<b>147.16 acres</b>

### **E. Population Density Analysis**

The maps in the following sections were created using Arc GIS, a program consisting of a group of geographic information system (GIS) software products that allows users to create layered maps and perform basic spatial analysis, among other features. The entire City of Sandpoint was analyzed to determine where parks are needed most. Areas of high interest (for parks) were determined by locating areas with high density housing such as apartments,

condos, duplexes, etc. For visual purposes, the City was broken into two sections for a clearer analysis. The areas of higher density were overlaid with the Comprehensive Plan residential zones, or context areas (Figures 6 and 7).

#### *Comprehensive Plan Context Area Definitions*

Context Areas were incorporated into Sandpoint's Comprehensive Planning process to facilitate the development and evaluation of long-range, strategic growth patterns. The Context Area map designations were informed by current land use as well as long-range vision.

**Context Area 2.** Context Area 2 (CA-2) is the lowest density development pattern located in the City, characterized by Sandpoint's historic single-family neighborhoods set on a traditional street grid. Houses in this context area feature an urban forest, active alleys, on-street and alley parking, walkable streets, and a variety of housing types intermixed on the same street. Neighborhoods such as those comprising South Sandpoint or in the vicinity of Sixth Avenue feature CA-2 style development and are identified as such in the Comprehensive Plan.

**Context Area 3.** Context Area 3 (CA-3) development patterns increase the density of housing through the use of smaller lot sizes, smaller setbacks, options for shared open space and the inclusion of attached and detached multi-family units. CA-3 is limited to residential uses only.

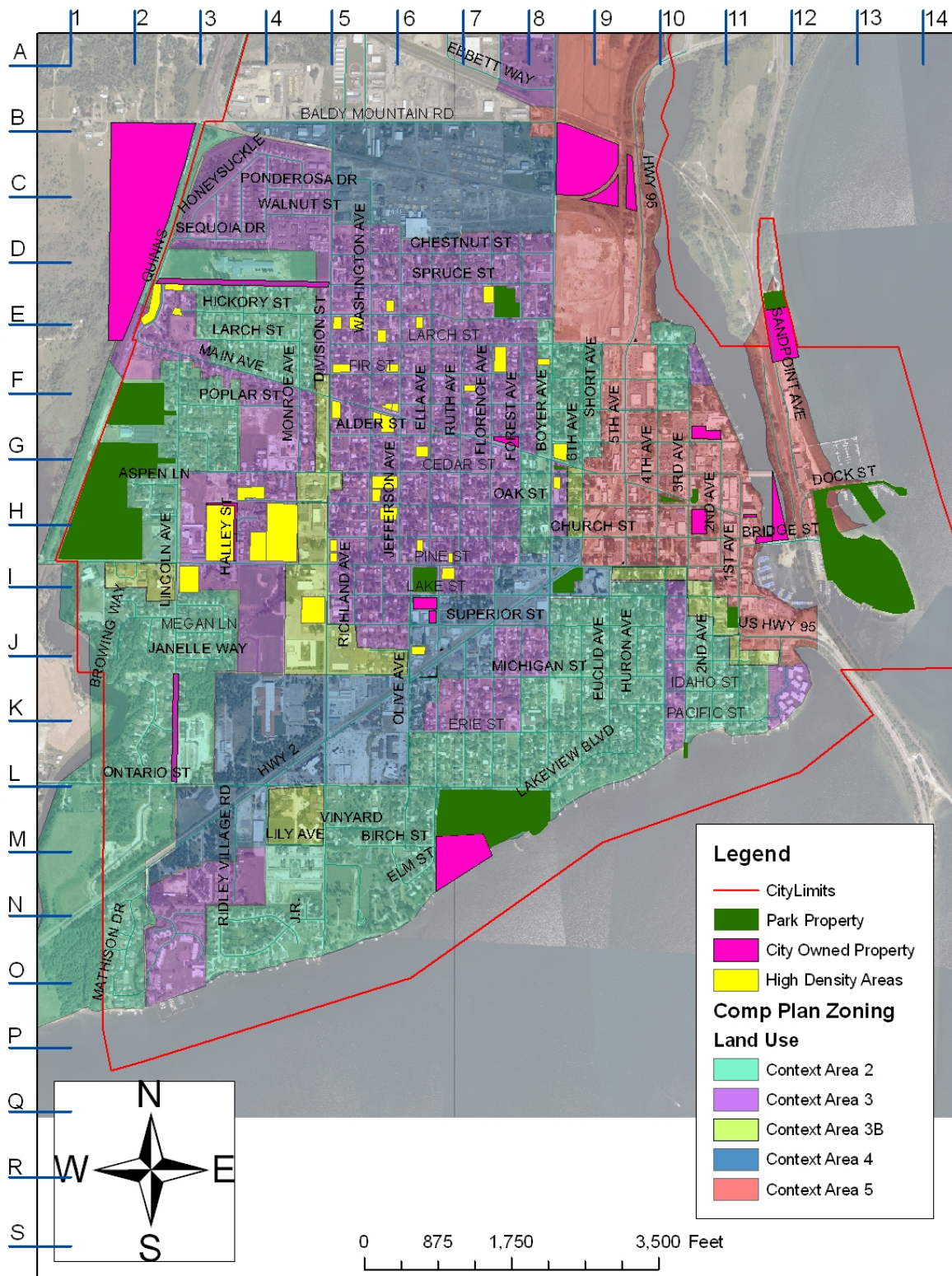
**Context Area 3B.** Context Area 3B (CA-3B, Business Overlay) development patterns are identical to CA-3 patterns, but envision mixed-use, neighborhood-compatible retail. These areas are typified by pedestrian-focused activities such as salons, coffee shops, and residentially-scaled professional or institutional offices. All commercial structures should have a residential component.

**Context Area 4.** Context Area 4 (CA-4) pattern areas generally match those of CA-3B, but increase density by emphasizing two and three-story mixed use and attached townhome-style residences. CA-4 areas are intended as vibrant secondary centers of commercial, office, and residential development, serving as neighborhood hubs for residents in neighboring CA-3 and CA-2 districts.

**Context Area 5.** Context Area 5 (CA-5) areas are envisioned as the primary commercial centers of the city, similar in urban pattern to CA-4 but with additional density in the form of scaled multi-story buildings housing shops and stores on the ground floor, offices on the second floor, and remaining floors dedicated to condos and apartments.

Map 2 on the following page (page 16) shows the City of Sandpoint from its southern City limits (Pend Oreille River) to Baldy Mountain Road. Map 3 (page 17) shows the City of Sandpoint from Baldy Mountain Road to its northern City limits. The legend for each map is identical. Areas of higher density are shown in yellow. The maps also show the Comprehensive Plan future zoning areas. The solid green areas are current parks and the solid pink areas are current city-owned properties. Certain community neighborhoods such as Westwood and Condo Del Sol were not included in the high density housing analysis because the neighborhoods provide members with park and recreation services such as water access, tennis courts, park land, etc. **The area marked as high density that fall within residential zoning areas with smaller yards and lots are considered higher priority for future park land acquisition and development.**

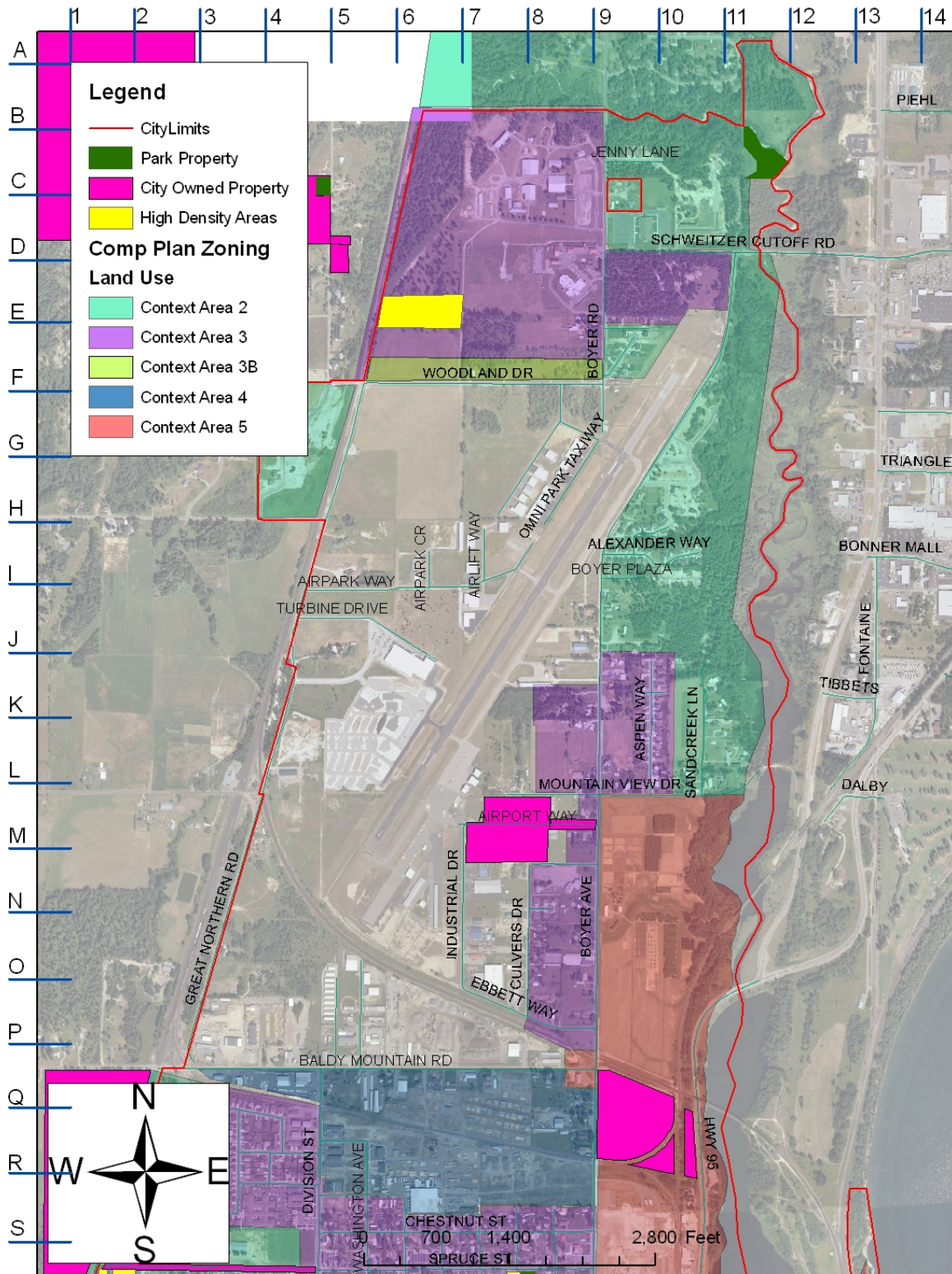
## City of Sandpoint - South - Facilities Analysis



Map 2. This map shows Comprehensive Plan residential zoning areas, high-density housing, and park and city owned land for South Sandpoint as of May 2010.



# City of Sandpoint - North - Facilities Analysis



Map 3. This map shows the Comprehensive Plan zoning areas, high-density housing areas, and current city and park owned land for North Sandpoint as of May 2010.

## **F. Proximity Analysis**

This section provides another means of park analysis, based on park size (acreage) and National Recreation and Park Association (NRPA) standards, where as previous sections analyzed park function and population density. The entire City of Sandpoint was analyzed to determine areas within the City that do not have proper access to parks. The identification of local park standards establishes a baseline for parks development, helping the Parks and Recreation Department with park planning, acquisition and development.

The NRPA developed standards that were intended as guidelines for use at the local level. These standards provide a system recognizing that open space services people at differing levels. For this analysis, all of our parks are categorized as open space. Considering NRPA development standards, individual standards for Sandpoint Parks and Recreation were defined. The following information and map are intended to clarify areas where Sandpoint is deficient in parks.

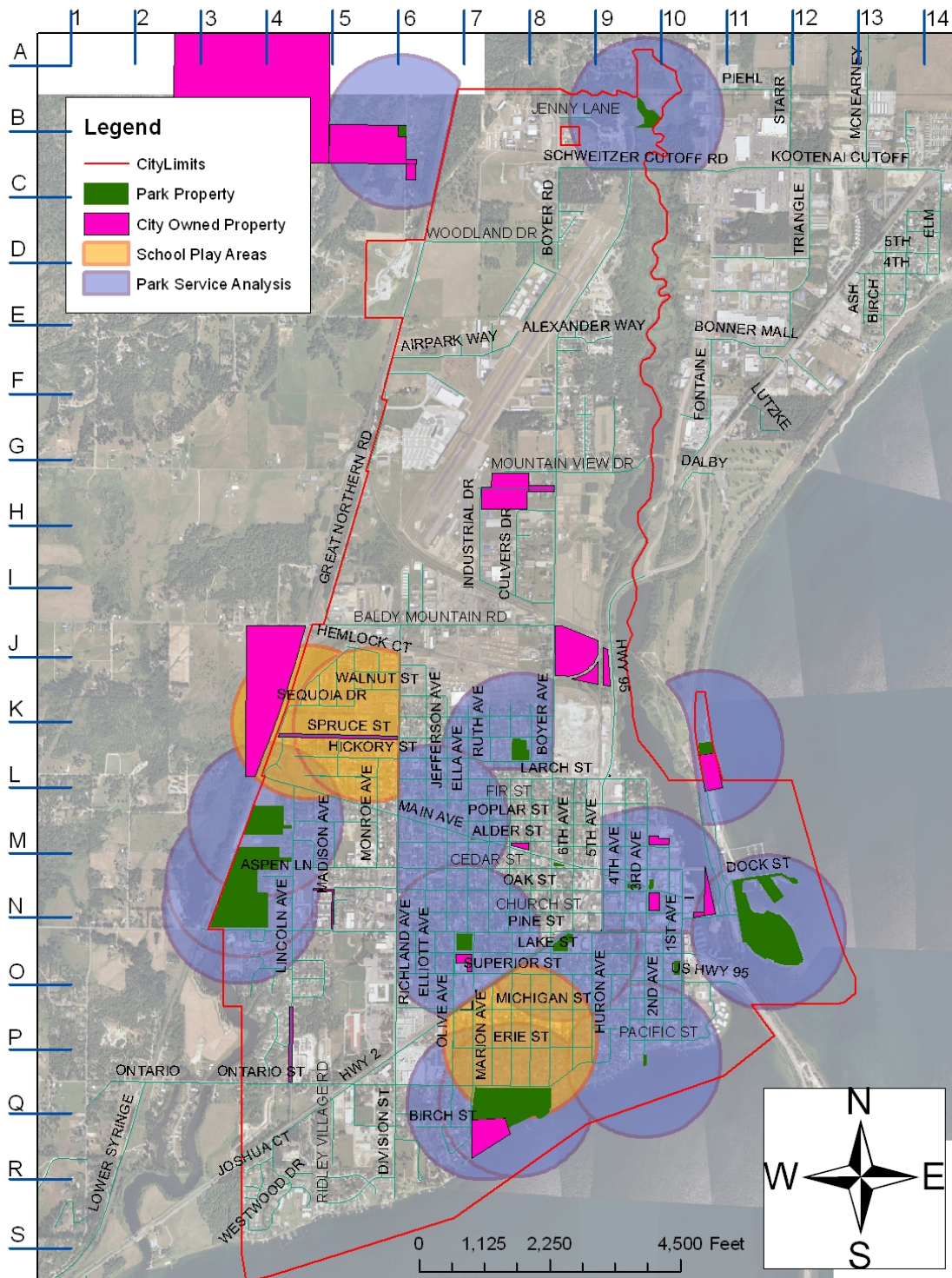
Sandpoint's parks vary drastically in size from small pocket parks to large community parks. The NRPA recommends service standards based on specific park types, but suggests defining local service standards based on park size and function. Due to our range in park size and strong emphasis on small, pedestrian-friendly, neighborhood parks Sandpoint defined a service standard of 0.25 miles for all park categories.

Sandpoint's two elementary schools, Washington and Farmin-Stidwell, were included in this analysis because they provide adequate open space and play area for nearby neighborhoods essentially functioning as park after school hours. Sandpoint High School was not included because the placement of its fields limits general public access.

By applying this 0.25 mile service radius to all the parks in Sandpoint, it is possible to determine where service gaps exist. Map 4 (page 19) shows these gaps do exist in the entirety of northern Sandpoint (north of Baldy Mountain Road) and in the center of town, north and south of the Main Street corridor. Very few parks have barrier-free routes that encourage walking, bicycling and alternate modes of transportation. Areas where the service radius crossed these barriers were removed. These barriers can be minimized or eliminated by providing safe routes along and across them. Prominent barriers in this analysis are Boyer Avenue, Division Street, Highway 2, 5<sup>th</sup> Avenue, Highway 95 and Pine Street.



# City of Sandpoint - Proximity Analysis



Map 4. Facilities Analysis Map showing a park service radius of 0.25 miles as of May 2010

## **G. Park Land Needs Goals and Strategies**

Park land acquisition is a complex process which ultimately is political and requires City Council action. This chapter is designed to assist the Parks and Recreation Department in providing its best advice to City officials.

**GOAL 1:** Consider facilities analysis when acquiring new park land

**GOAL 2:** Consider population density analysis when acquiring new park land

**GOAL 3:** Consider proximity analysis when acquiring new park land

**GOAL 4:** Update analyses as needed

**GOAL 5:** Partner with private developers to provide park land in new developments

**GOAL 6:** Consider community history and neighborhood input in naming parks

## CHAPTER 5: PARK GOALS AND STRATEGIES

### A. Introduction

This chapter is broken down into park categories where each park's information, goals and strategies are detailed. The goal statements were developed to assist in providing direction to the Parks and Recreation staff and commission. The strategy statements below each goal were established to assist in implementing the overarching goal. The park amenity improvement strategies were addressed and prioritized by Parks and Recreation staff and the Parks and Recreation Commission. The strategies moving the Department of Parks and Recreation toward a sustainable, zero-impact future were discussed and prioritized by the Best Management Practices (BMP) team. The BMP team consists of individuals from the University of Idaho Extension office, the Soil and Water Conservation District, Lake-A-Syst and City staff and elected officials. The BMP team meets periodically to determine specific practices for City parks. This chapter functions as a working, fluid document and is subject to change. The Parks and Recreation director can alter, delete, and add strategies at his discretion, as needed. However, City council approval is required to alter, delete, or add any of the goals. The Parks and Recreation Director is accountable for directing his staff to accomplish the strategies. As strategies are completed they will be checked off within the document. Strategies that are bolded are to be completed by the following year. Each strategy is to be completed by the year listed.

#### *Sustainability*

**Within given resources, the Department of Parks and Recreation commits to completing one, highly visible project per year for the next 20 years to reach our goal of a zero-waste parks system.** Projects should stem from the goals and strategies listed throughout this chapter and Chapter 3. Partnerships with local organizations, groups and volunteers are encouraged to ensure successful completion of each project. Partnerships between neighboring communities are encouraged to plan for and develop park facilities that Sandpoint does not have the physical space for or resources to develop and maintain.

#### *Education*

Educational and informational signage is an important aspect of parks and should be incorporated into our parks system. However, signage should not be so ever-present that the beauty and natural setting of Sandpoint's parks are hindered. Signs may include, but are not limited to, tree and plant types, historical information, wildlife information, park name and information, trail names and distances, and information about sustainability practices within the area. **The purpose of signage is to provide information to park users without overwhelming the park with signage.** When possible, signage projects should be partnered with local groups, organizations and schools.

#### *Vegetation and Trees*

**Native plants are always the first priority when any new vegetation is planted in the parks system.** Throughout this chapter, the term 'low input' is used instead of 'native' when referring to plantings. While native plants are most often best suited for the area, cost and availability is sometimes an issue. When native plants aren't used, affordable, available, low-maintenance plantings that have adapted to the area will be used as the second best option.

The City of Sandpoint Community Forestry Plan should be followed in all City parks.

#### *Community Gardens*

**Community gardens should be incorporated into the parks system whenever possible and supported by the surrounding neighborhood.**

Community gardens provide opportunities for social interaction, mental restoration and public education and involvement. Local food production is one of the simpler steps Sandpoint Parks and Recreation can take to move toward a zero waste system.



Figure 6. Community Garden at the Old 9th Grade Center Field



## B. Community Parks

### CITY BEACH

This 22-acre park was donated to the city in 1922 by the Northern Pacific Railroad and is now one of the focal points of Sandpoint. The park has been developed over the years by volunteer labor, donations, and City, County, State and Federal funds. City Beach is used for several community special events including a large arts and crafts fair, the Lion's Club 4<sup>th</sup> of July activities, as well as numerous picnics and family reunions.

Sandpoint City Beach provides amenities for picnicking and barbecuing throughout the park including a food concession stand and a covered picnic shelter. The park has plenty of access to the water for swimming and boating. Recreation facilities include various sports fields and courts and open grassy areas for unorganized play and relaxation.

The following strategies are ranked in decreasing order and should be checked off as they are completed.



Figure 7. Aerial photograph of Sandpoint City Beach

**GOAL 1:** Maintain and enhance park facilities following sustainable and environmentally conscious practices

#### STRATEGIES:

- ☒ Determine turf fertilizer and related needs based on specific soil sampling
- ☐ **Decrease the use of pesticide and synthetic fertilizer use by researching natural methods – 2010/2011**
- ☐ Implement a park recycling pilot project – 2015

**GOAL 2:** Reduce energy consumption

#### STRATEGIES:

- ☐ **Gradually replace lights in restroom, concession, and maintenance facilities with energy efficient light bulbs and fixtures – 2010/2011**
- ☐ **Request perimeter and parking lot lights with energy efficient bulbs and fixtures (through Avista) 2010/2011**
- ☐ Begin a pilot project to implement new indoor and outdoor light fixtures for energy savings. If project is a success will be implemented at all parks and trails – 2015
- ☐ Research possibility of natural energy generation (wind and solar) – 2015
- ☐ Install solar panels to power concessions, restroom, and shop – 2020

**GOAL 3:** Improve and increase vegetation throughout park

#### STRATEGIES:

- ☒ **Follow the City of Sandpoint Community Forestry Plan – 2010/2011**
- ☐ **Research plantings that will increase shade cover over parking lot – 2010/2011**
- ☐ Plant low input vegetation in riparian zone – 2015
- ☐ Plant low input vegetation plantings (or suitable alternative) that will increase shade cover over parking lot (after completion of byway construction and City Beach parking lot overlay) – 2015
- ☐ Incorporate educational plant signage to help inform people about native plants, as appropriate – 2015

- ☐ Plant low input vegetation for a windbreak between grasses and bike paths – 2020
- ☐ Plant low input vegetation around light posts – 2020

**GOAL 4:** Manage storm water run-off

STRATEGIES:

- ☐ **Implement storm water management pilot project considering all impervious surfaces – 2010/2011**
- ☐ Create a City Beach storm water plan for parking area – 2015
- ☐ When slated for replacement, replace perimeter path with a pervious surface – 2020

**GOAL 5:** Improve park amenities

STRATEGIES:

- ☐ Improve signage to City Beach
- ☐ Add another picnic shelter near the old kids pool
- ☐ Add more picnic tables throughout park
- ☐ Add a new slide (spiral)
- ☐ Install a playable fountain (splash park) that uses non-potable (lake) water, or research other possible locations
- ☐ Overlay parking lot
- ☐ Re-stripe parking lot
- ☐ Install “Do Not Feed the Birds” signs

**GOAL 6:** Control invasive species using environmentally friendly methods

STRATEGIES:

- ☐ **Research integrated pest management – 2010/2011**

*COMMUNITY HALL*

The Community Hall is a log-framed structure that is listed on the National Register of Historic Places. The “Hall” is one of the focal social gathering spots in the City. The main portion of the building is log and was constructed by the United Servicemen Overseas (USO) in 1936 for the servicemen stationed at Farragut Naval Station. An addition of 840 square feet was added in 1945 by the Boy Scouts of America and is still used by that organization. Community Hall features a kitchen, large meeting room, small meeting rooms, and restroom facilities. Community Hall is in a very visible area and would be a great location to demonstrate projects, especially those moving the department toward the zero-waste goal.

The following goals and strategies are ranked in decreasing order and should be checked off as they are completed.

**GOAL 1:** Maintain and enhance park facilities following sustainable and environmentally conscious practices

STRATEGIES:

- ☒ Determine turf and fertilizer needs based on specific soil sampling
- ☐ **Explore creative alternatives or partnerships to traditional herbicide and pesticide applications – 2010/2011**
- ☐ Research location for community compost, explore partnerships for compost management, and require kitchen users to compost food waste once established – 2015

**GOAL 2:** Improve and increase vegetation surrounding the building

STRATEGIES:

- ☒ Explore plantings that will increase shade cover in parking spots and for building climate control

- ☐ **Research opportunities for low-maintenance rain gardens around building downspouts – 2010/2011**
- ☐ Plant rain gardens around building downspouts – 2015
- ☐ Study possibility of low-maintenance moss garden in shady area located north of the building – 2015
- ☐ Mulch around all tree wells – 2015

**GOAL 3:** Manage storm water run-off

STRATEGIES:

- ☐ **Research rainwater collection off roof for irrigation purposes – 2010/2011**
- ☐ Irrigate lawn with collected rainwater – 2015

**GOAL 4:** Reduce energy consumption

STRATEGIES:

- ☐ Convert all light fixtures to energy efficient fixtures – 2015
- ☐ Research possibility of installing solar panels to power building – 2015
- ☐ If feasible, install solar panels – 2020

**GOAL 5:** Celebrate Sandpoint History

STRATEGIES:

- ☐ **Ensure Community Hall is listed on the historic registry – 2010/2011**
- ☐ **Display certificate documenting historical significance – 2010/2011**

**C. Neighborhood Parks**

*3<sup>RD</sup> AVENUE PIER*

This 0.26-acre neighborhood park was developed in 1995 to provide more waterfront public access and to address safety concerns of an old sewer outfall that pre-dated the dams. After the dams were constructed, the top of the old outfall structure was approximately 6" below the high water line, creating a safety hazard for boaters. This neighborhood park provides approximately 60' of Pend Oreille River frontage.

This park features amenities for picnicking, swimming and wading, which include a bike rack, small grassy area, and a deck with benches.

The following goals and strategies are ranked in decreasing order and should be checked off as they are completed.

**GOAL 1:** Improve storm water management

STRATEGIES:

- ☐ Consider a "wetland box" on the site to pre-treat street water run-off, in cooperation with the Storm Water Management Plan – 2015
- ☐ Consider low input vegetation plantings to create a riparian barrier for storm water and erosion management – 2015

*HICKORY STREET PARK*

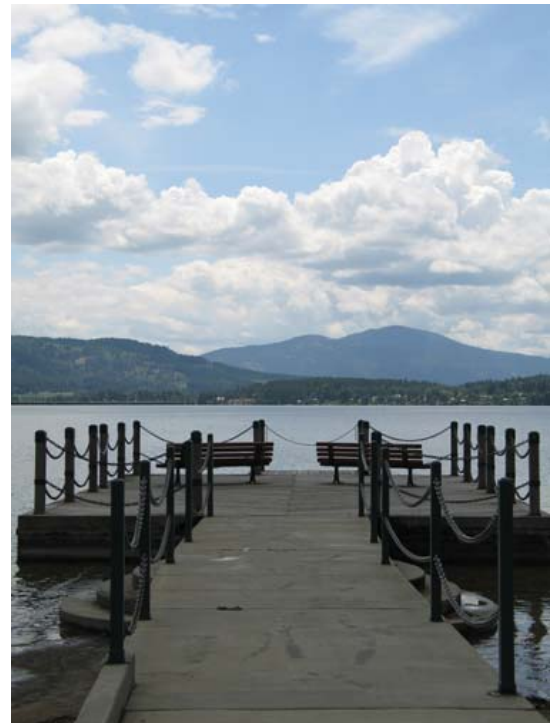


Figure 8. Third Avenue Pier looking toward the Pend Oreille River

This 2.29-acre park is the location of the old city shop property and was developed in 2002 and 2003. Hickory was designed with input from a citizens committee comprised mainly of residents from the neighborhood and is a very popular addition to the community and our parks system.

The following goals and strategies are ranked in decreasing order and should be checked off as they are completed.

**GOAL 1:** Maintain and enhance park facilities following sustainable and environmentally conscious practices

STRATEGIES:

- ☒ Determine turf fertilizer and related needs based on specific soil sampling
- ☒ Explore creative alternatives or partnerships to traditional herbicide and pesticide applications
- ☒ Switch to fertilizers and related applications that have the lowest impact
- ☐ **Consider alternatives to turn in hard to reach corners and crooks to reduce trimming needs – 2010/2011**
- ☐ Launch a pilot program to test weed control around woody ornamentals using organic mulch and corn gluten, or like options – 2015

**GOAL 2:** Improve and increase vegetation throughout the park

STRATEGIES:

- ☒ Plant trees and shrubs that increase shade cover in the parking areas
- ☐ If embraced by neighborhood, consider community garden or community orchard opportunities – 2015

#### LAKEVIEW PARK

Lakeview is a passive, neighborhood park, constructed in 1978-79 with funding from the City of Sandpoint and a grant from the Soil Conservation Fund. Before it was developed into a park, the property was the site of the Bonner county Fairgrounds. Currently, the Bonner County Historical Society and the Sandpoint Lions Club lease space in the park for their buildings and activities. A portion of the park is also developed and maintained by the North Idaho Native Plant Society as a native plant arboretum. In addition, the park has a small house that is maintained by Parks and Recreation and rented to a private party. Lakeview hosts numerous community events, family reunions, and picnics. For boaters the boat launch ramp provides water access. There are also tennis courts, a basketball/roller hockey court, a playground, and a walking/biking path for a variety of recreational activities.

The following goals and strategies are ranked in decreasing order and should be checked off as they are completed.

**GOAL 1:** Improve water management for irrigation and run-off

STRATEGIES:

- ☒ Irrigate from the river when the water level is at 2058 feet
- ☐ Consider using the discharge from the new waste water treatment plant when the river is too low – 2020
- ☐ Research the construction of a living roof on the restroom facility (when new construction occurs) – 2020

**GOAL 2:** Maintain and enhance park facilities following sustainable and environmentally conscious practices

STRATEGIES:

- ☒ Explore plantings that require less water, shade, and are acidic soil



Figure 9. The new playground at Lakeview Park installed in late 2009.

tolerant

- ☒ Determine turf fertilizer and related needs based on specific soil sampling
- ☐ Explore a park/neighborhood compost in partnership with the Native Plant Society or other organization – 2015
- ☐ Explore possibility of composting toilets or using tertiary treated wastewater effluent in the restroom facility – 2020
- ☐ Replace toilets in restroom facility with composting toilets or use of tertiary treated wastewater effluent – 2020

**GOAL 3:** Improve and increase vegetation in the park area

- ☐ Provide shade for playground area – 2015

#### *MAIN AND WASHINGTON EASEMENT (unnamed)*

This easement features grass and trees and is currently under development for an irrigation system.

The following goals and strategies are ranked in decreasing order and should be checked off as they are completed.

**GOAL 1:** Work with community to develop park and make park decisions

STRATEGIES:

- ☐ **Talk with neighborhood surrounding park about what park amenities and uses they would like to see (benches, picnic tables, etc.) – 2010/2011**

**GOAL 2:** Maintain and enhance park facilities following sustainable and environmentally conscious practices

- ☒ Determine turf fertilizer and related needs based on specific soil sampling

#### **D. Special Use Areas**

##### *CITY BEACH MARINA*

The City Beach Marina is located near the boat launching facilities on the southern boundary of the City Beach Park.

##### *CENTENNIAL PARK*

This 7.25-acre property was purchased in 1990 from the First Christian Church. The park attaches to the north end of Travers Park. Construction began in 2000 and the park officially opened in July of 2001 to celebrate the City's 100-year celebration. As an addition to the Travers Park sports complex, this facility serves as our primary soccer venue for the High School and local organizations. Parking and restroom facilities are available at Travers Park.

The following goals and strategies are ranked in decreasing order and should be checked off as they are completed.

**GOAL 1:** Maintain and enhance park facilities following sustainable and environmentally conscious practices

STRATEGIES:

- ☒ Determine turf fertilizer and related needs based on specific soil sampling at entrance and throughout park
- ☐ **Explore creative alternatives or partnerships to traditional herbicide and pesticide applications – 2010/2011**
- ☐ Consider alternative grass species for over seeding at entryway to reduce water and maintenance needs – 2020

**GOAL 2:** Improve and increase vegetation in the park area

STRATEGIES:

- ☐ Study possibility of using the park entry off Lincoln for a Memorial botanical garden – 2015
- ☐ Plant low input field grasses in areas that aren't used for sports (around fields, etc.) – 2020

**GOAL 3: Improve park amenities**

STRATEGIES:

- ☐ Identify possible locations for picnic areas around the park perimeter
- ☐ Implement a picnic area within the park
- ☐ Incorporate educational signage (wetland area, edible trees, native plants, etc.)

*CITY HALL*

City Hall was previously located on 2<sup>nd</sup> Avenue and moved to 1123 Lake Street between 1994 and 1995. Administrative offices at City Hall include the Mayor and the Clerks office. Departments located at City Hall include Finance (utilities), Legal, Parks and Recreation, Public Works, Police, and Fire, as well as the Council Chambers.

In 2007, Avista upgraded the interior lighting to energy efficient lighting and in 2008 the interior was remodeled to utilize the second floor.

The following goals and strategies are ranked in decreasing order and should be checked off as they are completed.

**GOAL 1: Maintain and enhance park facilities following sustainable and environmentally conscious practices**

STRATEGIES:

- ☒ Determine turf fertilizer and related needs based on specific soil sampling
- ☐ **Research non-turf options for green strip on south side of Lake street – 2010/2011**
- ☐ **Explore creative/effective alternatives or partnerships to traditional herbicide and pesticide applications – 2010/2011**
- ☐ Incorporate education signage (wetland area, edible trees, native plants, etc.) – 2015
- ☐ Implement non-turf option for green strip on south side of Lake street – 2015

**GOAL 2: Improve water management for irrigation and run-off**

STRATEGIES:

- ☐ Explore collecting storm water run-off management from roof and/or parking lot for grounds/irrigation use – 2015
- ☐ Replace irrigation system outside – 2015
- ☐ Research possibility of a green/living roof (on portion of City Hall roof) – 2015
- ☐ Build a green/living roof on portion of City Hall roof (if feasible) – 2020

**GOAL 3: Reduce energy consumption**

STRATEGIES:

- ☐ Research renewable energy generation for building (solar or wind on roof) – 2015
- ☐ Generate renewable energy on City Hall roof – 2020

**GOAL 4: Improve and increase vegetation outside the building**

STRATEGIES:

- ☐ Plant low input vegetation around trees and in grass strips – 2015
- ☐ Incorporate educational signage to inform people about the native and edible plants – 2015
- ☐ Expand herbs in garden area – 2015

*CITY PARKING LOT*

The City parking lot is located on the corner of Third Avenue and Main Street. Many of the parking spaces are handicap parking only. The City parking lot is free for the first two hours. Permits for the parking lot are sold monthly and/or annually. Many shade trees are present throughout the parking lot.



The following goals and strategies are ranked in decreasing order and should be checked off as they are completed.

**GOAL 1:** Improve and increase vegetation

STRATEGIES:

- ☐ Consider xeriscape or mulching on islands if appropriate for high-traffic areas – 2015

**GOAL 2:** Improve storm water management for irrigation and run-off

STRATEGIES:

- ☐ Explore possibility of creating natural swales or mushroom treatment basin for non-permeable run-off – 2015
- ☐ Implement a storm water run-off plan – 2015

**GOAL 3:** Improve amenities

- ☐ Wire parking lot for holiday lights – 2015
- ☐ Explore possibility of expanding Farmer's Market to this site – 2015

*FARMIN PARK*

This half-acre parcel was donated to the city by the Farmin family and is located in the heart of the downtown business district. The Hawkins family (Litehouse) donated the bandstand and improvements, including sidewalks, pathways, and a clock tower were provided by the Sandpoint Rotary Club. This park is the location for the seasonal Farmer's Market in Sandpoint, and local musicians as well as special events and weddings reserve the bandstand throughout the summer months. Many people use the park for a relaxing lunch break, or just a place to stop and sit for a while.

The following goals and strategies are ranked in decreasing order and should be checked off as they are completed.

**GOAL 1:** Maintain and enhance park facilities following sustainable and environmentally conscious practices

STRATEGIES:

- ☒ Determine turf fertilizer and related needs based on specific soil sampling
- ☐ Develop partnership with University of Idaho landscape/architect program to develop a zero-impact design incorporating Farmer's Market – 2015
- ☐ Explore development options to reduce impact from the Farmer's Market – 2020
- ☐ Explore grass alternatives or pavers that wouldn't need irrigation and would be more durable to withstand Farmer's Market wear and tear – 2020

**GOAL 2:** Improve storm water management for irrigation and run-off

STRATEGIES:

- ☒ Check irrigation system to assure uniform coverage and efficient use of water
- ☐ **Research possible storm water collection (for irrigation purposes) or living roof on the bandstand – 2010/2011**

**GOAL 3:** Improve and increase vegetation



Figure 10. Entrance sign at Farmin Park.

#### STRATEGIES:

- ☒ Follow the City of Sandpoint Community Forestry Plan
- ☒ Consider low input tree species as trees need to be replaced
- ☐ Study locations for xeriscape options – 2015

#### *GREAT NORTHERN PARK*

This 7.19-acre property was purchased in 1999 from Wayne Hagadone during Mayor David Sawyer's administration. This property attaches to the north end of the property owned by the Assembly of God Church. The City was able to connect the Great Northern Park to Centennial Field by way of easements across the property of the Assembly of God Church so it could be developed for soccer fields, parking, restrooms, and a playground. Construction began in 2006 and the park will officially open in 2010.

The following goals and strategies are ranked in decreasing order and should be checked off as they are completed.

**GOAL 1:** Maintain and enhance park facilities following sustainable and environmentally conscious practices

#### STRATEGIES:

- ☒ Determine turf fertilizer and related needs based on specific soil sampling
- ☐ **Explore creative alternatives or partnerships to traditional fertilizer applications – 2010/2011**

**GOAL 2:** Improve and increase vegetation

#### STRATEGIES:

- ☐ Establish a thick and healthy turf to out-compete undesirable broadleaf weeds
- ☐ Plant low input vegetation that will increase shade cover in the parking lot – 2015
- ☐ Research opportunities for an urban orchard (or nut trees) away from sports fields (corners, perimeter) – 2015
- ☐ Plant natural, low-maintenance, low input vegetation plantings and field grasses in park corners and areas that aren't used for sports (around fields, etc.) – 2015
- ☐ Incorporate educational signage to inform people, which are the native plants, edible plants/trees, etc. – 2015

**GOAL 3:** Improve and upgrade trail system

#### STRATEGIES:

- ☐ Connect the pathway system with street paths/school corridors – 2015

#### *JEFF JONES TOWN SQUARE*

This public gathering area, located at 306 north Third Street, is a product of the 2003 Sandpoint Downtown Revitalization Project and was funded by the U.S. Department of Housing and Urban Development, the City of Sandpoint, a Block Grant from the Idaho Department of Commerce, a Local Improvement District (L.I.D.), Sandpoint Rotary Club, and other donations. The Square was dedicated in memory of Jeff Jones on November 21<sup>st</sup>, 2003. On a hot day you'll hear the laughter of kids and adults utilizing an interactive



Figure 11. Fruit tree at Great Northern Park.



Figure 12. The fountain at Jeff Jones Town Square.



fountain, the focal point of the Square, completed in 2004. The most recent addition to the Jeff Jones Square was the completion of the public restrooms, which opened in 2005. The Jeff Jones Town Square is currently used for seasonal Farmer's Market in Sandpoint, as well as other special events.

The following goals and strategies are ranked in decreasing order and should be checked off as they are completed.

**GOAL 1:** Improve and increase vegetation

STRATEGIES:

- ☐ **Follow the City of Sandpoint Community Forestry Plan – 2010/2011**

**GOAL 2:** Improve storm water management for irrigation, run-off and fountain use

STRATEGIES:

- ☐ Explore rain capture opportunities from roof of restroom facility (for irrigation) or a green/living roof – 2015

**GOAL 3:** Maintain and enhance park facilities following sustainable and environmentally conscious practices

STRATEGIES:

- ☐ Research solar panel(s) on restroom facility to power water fountain pump – 2015

*OLD 9<sup>TH</sup> GRADE CENTER*

This 1.6-acre park is green space that was part of the old Junior High School complex. It was incorporated into the parks system in 1991 and is used for T-ball league baseball, occasional softball, youth soccer, and general play. The eastern side of the park features a community garden managed by Sandpoint Transition Initiative.

The following goals and strategies are ranked in decreasing order and should be checked off as they are completed.

**GOAL 1:** Improve and increase vegetation throughout the park

STRATEGIES:

- ☐ Expand community garden and include fruit and/or nut trees (if supported by STI) – 2015

**GOAL 2:** Maintain and enhance park facilities following sustainable and environmentally conscious practices

- ☒ Determine turf fertilizer and related needs based on specific soil sampling

**GOAL 3:** Develop park for other uses

STRATEGIES:

- ☐ Consider relocation of little league field to Travers/Centennial/Great Northern sports complex to develop the park for other uses – 2020

*OUTDOOR SHOOTING RANGE*

This 6-acre fenced shooting range is located on Baldy Mountain Road. It was initially built in 1957 from bridge timbers from the "old wagon" bridge, and donated labor and materials. Major improvements began in 1990 and continue. Some of the improvements to date include fencing, 14 covered shooting benches, a storage space, and landscaping. Scheduling for the range is through the City and is open to the public only when volunteer range masters are present.

The following goals and strategies are ranked in decreasing order and should be checked off as they are completed.

**GOAL 1:** Maintain and enhance park facilities following sustainable and environmentally conscious practices

STRATEGIES:

- ☒ Use a bio control method to manage noxious weeds (IPM, etc)
- ☐ Provide better signage promoting services provided by the City of Sandpoint – 2015
- ☐ Implement cover plantings, specialty grass seeding and/or barriers to minimize erosion – 2015

**GOAL 2:** Improve storm water management for irrigation and run-off

STRATEGIES:

- ☐ If an irrigation system becomes necessary, explore using the large roof (covering the shooting benches) to capture rain water for irrigation – 2020

**GOAL 3:** Consider park development for other uses

STRATEGIES:

- ☐ **Research development option of creating a XC Ski trail system, show shoe trails, and/or a sledding hill for winter use when range is closed – 2010/2011**

*PINE STREET PARK*

The location of this 2-acre facility makes it an excellent neighborhood park for general play. It is also used for organized softball, baseball, and soccer. An indoor shooting range, owned and managed by the Bonner County Sportsmen Association is located within the boundaries of the park. This park includes picnic tables, grassy shaded areas, and a playground for picnicking and passive use. The playground equipment is scheduled for improvement and replacement.



**Figure 11. Panoramic view of Pine Street Park**

The following goals and strategies are ranked in decreasing order and should be checked off as they are completed.

**GOAL 1:** Improve and increase vegetation throughout the park

STRATEGIES:

- ☐ **Follow the City of Sandpoint Community Forestry Plan – 2010/2011**
- ☐ Implement a low input plant garden in the northeast corner of the park – 2015
- ☐ Consider grass species, ground cover, or organic mulch options for shady and treed areas – 2015

**GOAL 2:** Improve storm water management for irrigation and run-off

STRATEGIES:

- ☐ Develop grassy swales in southwest corner of park to capture storm water from the basketball court – 2015
- ☐ Explore storm water capture from roof of indoor shooting range to be used for irrigation purposes – 2020

**GOAL 3:** Maintain and enhance park facilities following sustainable and environmentally conscious practices

STRATEGIES:

- ☒ Determine turf fertilizer and related needs based on specific soil sampling
- ☐ Consider developing off-street parking on the east boundary of the park, if paving use pervious paving materials – 2015
- ☐ Consider development of parking in the southwest corner of the park (pervious surfaces only) – 2015

- ☐ Use 100% organically approved fertilizers and pesticides – 2020

### *TRAVERS PARK*

Travers Park, located at 2102 Pine Street, was developed with funding assistance from the Land and Water Conservation Fund and was opened for play in 1986. The original 5 acres was the site of the old city dump, with 10 additional acres acquired through a land trade with the Louisiana Pacific Corporation. The remaining 2.5 acres were purchased from a private party. The park serves as Sandpoint's major sports complex for youth and adults and is used by the city recreation department, the Lake Pend Oreille School District, Sandpoint Baseball Association, Strikers Soccer, and other organizations. Travers Park not only provides access to many sports facilities but there is also a playground, picnicking areas, a paved path for walking and biking, and a skate park.

The following goals and strategies are ranked in decreasing order and should be checked off as they are completed.

#### **GOAL 1:** Improve and increase vegetation throughout the park area

##### STRATEGIES:

- ☐ Implement plantings that will increase shade cover in the parking lot – 2015
- ☐ Plant low input field grasses in areas that aren't used for sports (around fields, etc.) – 2015

#### **GOAL 2:** Maintain and enhance park facilities following sustainable and environmentally conscious practices

##### STRATEGIES:

- ☒ Determine turf fertilizer and related needs based on specific soil sampling
- ☐ **Explore creative alternatives or partnerships to traditional herbicide, pesticide, and fertilizer applications – 2010/2011**

#### **GOAL 3:** Improve storm water management for irrigation and fountain use

##### STRATEGIES:

- ☐ Identify locations for swales or other pre-treatment opportunities around the parking lot – 2015

#### **GOAL 4:** Improve park amenities

##### STRATEGIES:

- ☐ **Install All Access playground to replace outdated playground – 2010/2011**
- ☐ Consider installing an all access, interactive fountain in close proximity to playground – 2015
- ☐ Place benches in skate park area (maybe skate-able) – 2015
- ☐ Incorporate educational signage (wetland area, edible trees, native plants, etc.) – 2015

### *WAR MEMORIAL FIELD*

This multi-use sports complex is dedicated to the memory of Bonner County servicemen and women lost in the wars from WWI on. A memorial dedicated to all Bonner County soldiers is located at the east entrance to the park. War Memorial became a part of the City's park system in 1993.

The park has traditionally been the "home" field for the Sandpoint High School baseball, football, and soccer teams, and the Sandpoint Babe Ruth, American Legion, and Senior Men's baseball teams. The park also hosts the "Festival at Sandpoint" music festival every August and various other community activities throughout the year. The facility was developed by community wide participation with mostly donated funds, labor, and materials. The City of Sandpoint, Bonner County, and user fees fund today's maintenance costs.

The following goals and strategies are ranked in decreasing order and should be checked off as they are completed.

#### **GOAL 1:** Maintain and enhance park facilities following sustainable and environmentally conscious practices

##### STRATEGIES:

- ☒ Determine turf fertilizer and related needs based on specific soil sampling
- ☐ **Spot weed whack shoreline riparian zone for noxious weed management – 2010/2011**
- ☐ Research environmentally friendly fertilizer applications – 2015

**GOAL 2:** Improve storm water management for irrigation and run-off

STRATEGIES:

- ☒ Irrigate field with water pulled from river when water level is appropriate
- ☐ **Test water entering and exiting the “mushroom treatment” basins for verification of effectiveness – 2010/2011**

#### *WINDBAG MARINA*

The Windbag Marina is located on the jetty on the northern boundary of the City Beach Park. The City took over complete management in 2005.

The jetty is envisioned as a scenic, waterfront, passive park for fishing, potential dog-water access, people/boat watching, walking, contemplation, marina access, photography and pure enjoyment of the lake. Also, the jetty provides a self-sustaining revenue source through the marina for future park expansion, capital projects and marina upkeep.

**GOAL 1:** Improve Marina facilities for users and increased revenue

STRATEGIES:

- ☐ **Develop jetty for park land – 2010/2011**
- ☐ **Develop water front trail along jetty – 2010/2011**
- ☐ **Develop trail connecting City Beach to jetty park – 2010/2011**
- ☐ **Name jetty park – 2010/2011**
- ☐ Expand docks – 2015
- ☐ Covered viewing area on water pump house – 2020

#### **E. Natural Parks**

##### *CEDARS PARK*

Cedars Park is 2.56-acre Natural Park that was dedicated as parkland to the City by the Cedars Subdivision with City Council approval in 2008. Currently, this park is undeveloped.

The following goals and strategies are ranked in decreasing order and should be checked off as they are completed.

**GOAL 1:** Develop park

STRATEGIES:

- ☐ **Wetlands should be preserved and enhanced – 2010/2011**
- ☐ **Development should be passive and natural to create a fun and exploring experience for park users – 2010/2011**
- ☐ Explore possibilities to take advantage of creek-side setting (kayak stops, etc.) – 2015
- ☐ Consider public art opportunities – 2020

**GOAL 2:** Develop trail within park



Figure 13. Aerial photograph showing the perimeter of Cedars Park.

STRATEGIES:

- ☐ Incorporate natural trail that possibly includes exercise or other interactive stations – 2020

**GOAL 3:** Maintain and enhance park facilities following sustainable and environmentally conscious practices

STRATEGIES:

- ☒ Determine turf fertilizer and related needs based on specific soil sampling
- ☐ Research bio control method to manage noxious weeds – 2015
- ☐ Incorporate educational signage to inform people about native plants, wetlands, wildlife, etc. – 2015

*HUMBIRD MILL PARK (TRAILHEAD)*

The Humbird Mill Park Trailhead consists of 2 undeveloped acres and is located just north of the Seasons at Sandpoint near the City of Sandpoint water treatment plant. The trailhead leads into the envisioned Pend Oreille Bay Trail that will parallel Lake Pend Oreille to Kootenai.

The following goals and strategies are ranked in decreasing order and should be checked off as they are completed.

**GOAL 1:** Maintain and enhance park facilities following sustainable and environmentally conscious practices

- ☐ STRATEGIES:
- ☐ **Research bio control or other environmentally-friendly method to manage noxious weeds – 2010/2011**
- ☐ Install proper educational signage for public interaction with historic ruins – 2015

**GOAL 2:** Improve and increase vegetation

STRATEGIES:

- ☐ Study property trees for health and integrity (not included in Community Forestry Plan) – 2015
- ☐ Implement cover plantings or specialty grass seeding to minimize erosion and reduce maintenance needs – 2015
- ☐ New tree plantings include fruit and/or nut trees – 2020

*MICKINNICK TRAIL HEAD*

Nicky and Mick Pleass donated 160 acres to the USFS in 1997 for a trail directly above Sandpoint, Idaho. They wanted to preserve the scenic backdrop of Sandpoint for future generations and as a gift to the community. The Mickinnick Trail is a result of the joint efforts of the Idaho Panhandle National Forest, the City of Sandpoint, BLM, Bonner County, and the Friends of the Mickinnick Trail. The trailhead is on Woodland Drive. The trail goes to the top of the ridge between Little Sand Creek and Syringa Creek and is the closest and most easily accessible trail to Sandpoint. The name “Mickinnick” is derived from Mick and Nicky and the native Kinnikinnick plant that is plentiful along the trail.

This 3.8 mile (one way) Mickinnick Trail switchbacks to the top at 4300 feet with an elevation gain of 2150 feet around a huge rock out cropping, mossy and grassy meadows, and through a hundred different species of plants and trees, some over 300 years old. Numerous large and small animals and birds abound throughout this diverse forest.



**Figure 14.** Entrance to Mickinnick Trail Head.

Hiker, snowshoers and bicyclists can take advantage of many extraordinary 180-degree views along the trail from the Cabinet Mountains, across Lake Pend Oreille, the Monarchs, over to Pend Oreille River and all in between.

At the base of the trail amenities include a parking lot, restrooms, and potable water. The 20-acre trailhead is currently undeveloped.

The following goals and strategies are ranked in decreasing order and should be checked off as they are completed.

**GOAL 1:** Maintain and enhance park facilities following sustainable and environmentally conscious practices

STRATEGIES:

- ☐ Explore options for wheelchair accessible path around wetlands area for wild land/natural experience – 2015
- ☐ Manage noxious weeds with a bio control or environmentally friendly method – 2015
- ☐ Provide better signage promoting services provided by the City of Sandpoint – 2020
- ☐ Incorporate educational signage to inform people about native plants, wetlands, edible plants, etc. – 2020

**GOAL 2:** Improve park amenities

STRATEGIES:

- ☐ Consider implementation of a disc golf course – or suggest better location – 2015
- ☐ Install composting toilets as a pilot project – 2015

**GOAL 3:** Increase use of alternative energy

STRATEGIES:

- ☐ Explore and research options if implementing wind and/or solar structures – 2020

**F. Recommended Parks**

The following recommended parks are on current City-owned land and City right-of-ways.

*5<sup>th</sup> AVENUE FROM LARCH TO CEDAR*

The City of Sandpoint maintains the green strips from Cedar Street to Larch Street along both sides of 5<sup>th</sup> Avenue. The City took over management of 5<sup>th</sup> Avenue one year after the Idaho Transportation Department completed construction on the corridor.

The following suggestions are recommended for future park development:

- ☒ Determine turf fertilizer and related needs based on specific soil sampling
- ☐ **Explore xeriscape options – 2010/2011**
- ☐ Assure that irrigation is as efficient as possible (non-potable water used)– 2015
- ☐ Explore possibility of moving to zero fertilizer/pesticide use and zero-minimal maintenance – 2020

*ISLAND: MAIN AND BOYER*

The grassy area on Main and Boyer is a 0.19-acre parcel of land with grass and trees. The following suggestions are recommended for future park development

- ☒ Determine turf fertilizer and related needs based on specific soil sampling
- ☐ Study as a potential site for bat boxes – 2015
- ☐ Consider as a potential location for community orchard and/or garden – 2015
- ☐ Explore possibility of expanding green footprint on park north boundary – 2020

*ISLAND: MAIN AND ELLA*



This is a 0.5-acre parcel of land with grass and trees, similar to that on Main and Florence. The following suggestions are recommended for future park development:

- ☒ Determine turf fertilizer and related needs based on specific soil sampling
- ☐ Explore options for a community garden location – 2015
- ☐ Consider xeriscape opportunities and low input vegetation plantings – 2015
- ☐ Explore options for a community composting location – 2020



Figure 15. Aerial photograph of two Main Street Islands.

#### *ISLAND: MAIN AND FLORENCE*

This is a 0.1-acre parcel of land with grass and trees. The following suggestions are recommended for future park development:

- ☒ Determine turf fertilizer and related needs based on specific soil sampling
- ☐ Explore options for a community garden and/or community compost location – 2015
- ☐ Consider xeriscape opportunities and low input vegetation plantings – 2015

#### *ISLAND: THE WHISTLE*

This land parcel is a 0.2-acre grassy triangle located on the corner of Pine and Boyer. The following suggestions are recommended for future park development:

- ☒ Determine turf fertilizer and related needs based on specific soil sampling
- ☐ Explore idea of creating a low input plant garden in this small parcel of land – 2020

#### *MAIN STREET RIGHT-OF-WAY*

Main Street running from Boyer Avenue to Division Street has a considerably large right-of-way that isn't being used to its full potential. Currently, the right-of-way blends into resident's yards and often consists of gravel, broken pavement, and unmaintained grassy areas. The large right-of-way provides a unique opportunity to create a bike path with many park-like features. This would encourage alternate modes of transportation in a safe environment as well as drastically improve the appearance of Main Street.



Figure 16. Image showing possible design layout for Main Street right-of-way

**GOAL 1:** Develop park

- ☐ Involve neighborhood in development process – 2015
- ☐ Complete first stage (1 or more blocks, originating at the Sandpoint Senior Center) - 2015

**GRAY WAY**

Gray way is City owned right-of-way running between the Pend Oreille River and Elm Street. This right of way provides a unique opportunity to create a riverside trail connecting the south end of Division to the south end of Ella, and eventually to the south end of Boyer. Gray Way will not provide water access.

**GOAL 1:** Develop riverside trail to Division Street

- ☐ Involve neighborhood in development process – 2015
- ☐ Develop trail along Gray Way – 2020
- ☐ Extend trail west to Division Street – 2020
- ☐ Extend trail east to Lakeview boat launch – 2020



Figure 17. Aerial photograph showing Gray Way.

## STREET END RIGHT-OF-WAYS

The City controls three street ends that end at the Pend Oreille River. They should be developed for water access similarly to 3rd Avenue Pier. See Appendix F for potential park ideas.

### Street End: Boyer

#### GOAL 1: Develop park

- ☒ Involve neighborhood in development process
- ☐ Develop for water access – 2020



Figure 19. Panoramic photograph of Boyer right-of-way.



Figure 18. Aerial photograph of Boyer right-of-way

### Street End: Ella

#### GOAL 1: Develop park

- ☒ Involve neighborhood in development process
- ☐ Develop for water access – 2020



Figure 20. Panoramic photograph of Ella right-of-way



Figure 21. Aerial photograph of Ella right-of-way



## Street End: Euclid

### GOAL 1: Develop park

- ☒ Involve neighborhood in development process
- ☐ Develop for water access – 2020



Figure 23. Panoramic photograph of Euclid right-of-way



Figure 22. Aerial photograph of Euclid right-of-way

### CITY SEWER PLANT

Currently, the City sewer plant is located on a 6.8 acre parcel of land neighboring Lakeview Park and the Pend Oreille River. Given the likelihood the sewer plant will move locations within the next twenty years, this parcel of land would be a wonderful waterfront community park. Neighboring residences should be involved in all aspects of development.

### GOAL 1: Develop park

- ☐ Involve community in development process - 2020
- ☐ Consider this location for a multi-use structure (skating rink in winter, wedding receptions in summer) – 2020
- ☐ Consider this location for a natural amphitheatre – 2020
- ☐ Consider this location for an expansion of the arboretum – 2020

### HIGHWAY 95 BY-WAY AREAS OF MANAGEMENT

Included in the Highway 95 By-Way project is the construction of a shared-use pathway that will be within the City's jurisdiction. The pathway trailhead will be located at the old Lakeside Inn area and will continue north along Sand Creek to the northern City limit boundary.

Overall, the pathway area includes:

- 2,510 feet of vegetated walls and 1,360 plantings
- 3,074 feet of pathways and 2.7 acres of lawn
- 20 lights
- Irrigation systems feeding from Sand Creek
- Parking lot at Lakeside Inn area featuring 30 spaces
- Benches and trash receptacles
- Rock stairs down to Sand Creek

### GOAL 1: Develop Lakeside Area for park usage

#### STRATEGIES:

- ☐ Consider using area for City or private concessions

## *DOG-FRIENDLY PARKS*

A dog-friendly park is much needed in the Sandpoint parks system. Dog owners consider their canine friends to be a member of the family and need a place to bring their dog with them on park outings. A successful dog-friendly park will include water access, open spaces for exercise and a park where people of all ages enjoy and are comfortable.

**GOAL 1:** Develop a dog-friendly area within the City park system

- ☐ **Implement a pilot project for a dog-friendly park, suggested location is Lakeview Park, unless a better location is decided – 2010/2011**
- ☐ **Provide plenty of poop bags and garbage cans during trial period – 2010/2011**
- ☐ After pilot project review success, and if more review is needed, consider extending length of pilot project and possible development of off-leash area – 2015

## *ART IN PARKS*

Parks in Sandpoint currently host minimal public artwork. This plan does not address future public art, leaving that task to the City Arts Commission who are currently working on a citywide plan. This section should be updated to match that plan.

**GOAL 1:** Support the City Arts Commission in finding suitable locations for public art in parks

**GOAL 2:** Encourage and facilitate community art events in parks such as fairs, festivals, art tours, performances and films.

## CHAPTER 6: RECREATION

---

### A. Introduction

The Recreation Division's primary functions are program development, administration, planning, evaluation, fundraising, hiring, training, registration, scheduling, employee supervision, budget management, and customer service for City of Sandpoint Recreation Programs. This includes, but is not limited to; youth sports, adult sports, arts and crafts, summer camps, presentations, lifeguards, outdoor shooting range, swim lessons, enrichment classes and special events.

The department also assists quality of life through equipment loans and co-sponsorships with other community organizations and events. Current organizations that we partner with for funding, programming, and events are:

#### *Community Organizations*

- Bonner County Sportsman's Association
- Kinnickinnick Native Plant Society
- The Pend Oreille Peddlers
- Sandpoint Lions Club
- Sandpoint Tennis Association

#### *Government Agencies*

- Bonner County Fair
- Bonner County Juvenile Probation
- East Bonner County Library
- Idaho Department of Fish and Game
- USFS Idaho Panhandle National Forest
- Idaho Department of Parks and Recreation
- Lake Pend Oreille School District #84
- US Coast Guard Auxiliary

#### *Local Businesses*

- Avina By Nature
- The Basket Case
- Bonner County Daily Bee
- Connie's Café
- The Integrative Athlete
- Kodiak Advertising
- Litehouse Dressings
- Sandcreek Schweitzer Conoco
- Sandpoint Outfitters
- Sandpoint Sports
- Sandpoint Taekwondo
- Sandpoint West Athletic Club
- Schweitzer Mountain Resort
- Sports Plus
- Thorne Research
- Trinity at City Beach

#### *Non-Government Agencies/Businesses*

- American Red Cross
- United States Lifesaving Association

#### *Non-Profits*

- Music Conservatory of Sandpoint
- Sandpoint Chamber of Commerce

### B. Inventory of Programs Offered

#### *Youth Programs*

- Art Camp
- Babysitters Training
- Basketball
- Drumming
- Flag Football
- Golf
- Holiday Soccer Tournament
- Indoor Volleyball
- Lifeguarding Tomorrow
- Little Mozart's Music Program
- Open Gym – Basketball
- Sailing
- Sand Volleyball
- Summer Adventure Camp



- Swim Lessons
- Taekwondo
- Tennis
- Thorne Art Camp
- Thorne Science Camp
- Tumbling
- “Unique” Triathlon

#### *Family Programs / Events*

- King of the Kongcrete
- Lou Domanski Chess Festival
- Own the Night
- Taekwondo



Figure 24. Children enjoying art camp.

#### *Adult Programs*

- Avalanche Transceiver Workshop
- Basketball
- Bridge
- Decisions in the Backcountry
- Golf
- Holiday Soccer Tournament
- Indoor Soccer League
- Indoor Volleyball
- Mom Learn to Ski/EZ 123
- Moonlight XC Ski
- Open Gym – Basketball
- Sailing
- Sand Volleyball
- Softball
- Tennis
- Ultimate Frisbee
- USCGA Boating Skills and Seamanship



Figure 25. King of the Kongcrete competition at the Travers Skatepark.

#### *Special Events*

- |   |                      |
|---|----------------------|
| • City Beach Block Party and Roller Disco | • Paddlers Challenge |
| • Hershey's Track Meet                    | • Tennis Block Party |
| • Life Sports Festival                    | • Water Safety Day   |
| • Outdoor Shooting Range                  |                      |

#### *Lifeguards*

One of the most visible and significant programs facilitated by the Parks & Recreation Department is the Lifeguard Program at the City Beach. Our Lifeguard program and the Sandpoint City Beach is a United States Lifesaving Association (USLA) Certified Facility meeting rigid qualifications. In order to obtain the USLA certification, our guards and facility meet requirements that include in-service training hours and on-going education for our staff.

All lifeguards are Red Cross Certified Lifeguards and hold a CPR/AED for the Professional Rescuer certification. This program takes a minimum of 14 committed individuals to run each summer, and we have developed a great program that produces confident, professional, and well-trained lifeguards for the City of Sandpoint.

## **C. Promotion, Marketing and Program Evaluation**

### *Electronic*

**Website.** The Recreation Division maintains and updates a multi-page website within the City of Sandpoint Domain. The latest activity booklet, registration forms, schedules, league standings, deadlines and new programs are all available online. Site visitors can also sign up to receive our e-mail notices regarding programs and registration deadlines.

**River Journal Online.** The Recreation Supervisor publishes one article a month featuring our programs for that month. Specialty events and programs get their own article.

**E-mail.** A subscription e-mail list is used to send out promotions and reminders about registration deadlines. It is also to inform subscribers about new programs that are not listed in the program booklet.

**Sandpoint Online.** Sandpoint Online receives e-mail promotions and publishes our programs and events on the events page of their web site.

**Surveys.** Survey Monkey is a new tool that the Recreation Division is using; allowing the Recreation Division to create online surveys and then analyzes the results.

### *Media*

**Radio.** Our programs are listed on the Community Calendar, and Public Service Announcements are used whenever applicable. The local radio also acts as an announcement service when a program is cancelled due to weather.

**Daily Bee.** The Bonner County Daily Bee is included in our e-mail promotion list and publishes our programs and deadlines in the community calendar. The Sports editor runs weekly adult league standings and features articles on special events when there is room.

**Sandpoint Reader.** We need to do more to partner with this media source.

### *Print*

**Activity Booklet.** A semi-annual booklet is produced and distributed that lists our policies, procedures, programs, events and registration information. The Bonner County Daily Bee prints the booklets and inserts them into the paper on the distribution date. The remaining copies are distributed by the Department of Parks and Recreation to the local schools, library, and Chamber of Commerce. Copies are always available in the Parks and Recreation office at City Hall.

**Flyers.** Flyers are distributed to local public and private schools for youth sports and special events.

**Posters.** Posters are used to promote special events and posted in the Parks and Recreation office and various locations around the community.

**River Journal.** The River Journal is sent an e-mail prior to their publish deadline, they included a list of our programs and deadlines for that publication.

**Surveys.** Surveys are available in the Parks and Recreation office, sent home with students, and handed out at Game venues.

## **D. Recreation Goals**

### **GOAL 1:** Improve Program Promotion and Marketing

#### STRATEGIES:

- ☐ **Determine unused sources for program information dissemination, including the possibility of social networking sites – 2010/2011**
- ☐ **Decrease use of paper used for marketing and promotions by using more electronic based sources – 2010/2011**

**GOAL 2:** Improve Program Evaluations

STRATEGIES:

- ☐ **Continue to use and increase use of electronic formats for gathering information – 2010/2011**
- ☐ **Research new strategies to increase program evaluation responses – 2010/2011**
- ☐ Measure waste from all recreation programs – 2015

**GOAL 3:** Increase and Improve Program Offerings

- ☐ **Improve youth programs that focus on outdoor skills and education (hiking, backpacking, tree identification, fishing, leave no trace, etc.) – 2010/2011**
- ☐ Improve/increase class offerings for mothers and young children to attend together, focusing on basic cognitive and physical development and socialization – 2015
- ☐ Improve programs for young teens (between elementary and high school) focusing on social programs, cooking, games and life sports – 2015
- ☐ Identify and develop programs for both parents and children to participate in, focusing on cooking, arts and crafts, and teamwork – 2015
- ☐ Develop hobby programs for adults (fly tying/fishing, photography, painting, etc.) – 2015
- ☐ Develop more community health and wellness events to help give people the tools and knowledge to continue living a healthy and sustainable lifestyle – 2015
- ☐ As facility use allows, increase adult open gym (basketball, volleyball, etc.) – 2020

**GOAL 4:** Develop a Community Recreation Center

STRATEGIES:

- ☐ Conduct research to determine if the community supports a recreation center – 2015
- ☐ Research funding opportunities for community recreation center – 2015
- ☐ Research locations for community recreation center – 2015
- ☐ Work with local architects to design LEED community recreation center – 2020

The main purpose of the community recreation center is to offer an indoor and outdoor facility for people to recreate at. There is a need for more indoor facilities in Sandpoint. A community recreation center with open gym space, multi-purpose rooms, and meeting rooms would be utilized almost instantly upon completion. It would also give the Parks and Recreation programs a place to call home and have centralized practices and games, without creating a center that competes with private businesses in Sandpoint.

Amenities would include:

- Large gym – 2 full Size Basketball Courts, 4 full size volleyball courts, Divider curtains between courts spectator seating around the perimeter.
- 2 smaller multi-purpose rooms – one with AV set up
- Meeting room/Auditorium with small stage and AV set up
- Locker rooms
- Small Foyer entry area with desk

**GOAL 5:** Work toward a fully sustainable (economically, socially, environmentally) City Beach Concessions stand

- ☐ **Sell local food and food products – 2010/2011**

- ☐ Consider packaging when determining what products to sell – 2015
- ☐ Evaluate and rank all products based on sustainability (partner with SHS class?) – 2015
- ☐ Provide opportunities for recycling – 2015

## CHAPTER 7: TRAILS

---

### **A. Introduction**

Trails are an integral part of our park and recreation system. They are used by people of all ages and abilities to exercise, relax, socialize, view wildlife and nature, and travel to destinations such as school and work. The City of Sandpoint is committed to providing trails throughout the city in response to the local community survey and meetings that indicated a high demand for multi-use trails.

One of the goals of this document is to create an interconnected system of trails and pathways that establishes links between neighborhoods and recreation opportunities, and provides an alternative transportation mode.

The contents of this chapter remain under construction due to the need for more public involvement and planning. Collaboration with the Bicycle Advisory Committee, North Idaho Bikeways, the Bonner County Planning Department, and City residents is needed to fully develop this chapter. The proposed trails within City limits are subject to change and are only a recommendation at this point. There is a strong need for trails throughout the ACI, which needs further planning and development before they are included in this plan.

### **B. Benefits**

Trails provide a variety of benefits to community as well as its members. According to the Rails-to-Trails Conservancy, trail and greenway benefits include health, transportation, conservation/environment, economic, and historic preservation/community identity. Trails create healthy recreation and transportation opportunities by providing people of all ages with attractive, safe, accessible and no-cost places to cycle, walk, jog, hike, etc. They often function as viable transportation corridors. In addition, trails preserve important natural landscapes, provided needed links between fragmented habitats, and offer tremendous opportunities for protecting plant and animal species. Humans are allowed to experience nature with minimal environmental impact. Countless communities across America have experienced an economic revitalization due in part to trails and greenways. Community leaders have been surprised at how trails have become sources of community identity and pride. Trails can be used to provide access to historic and cultural resources. Trails also provide personal benefits including improvements to a person's physical and emotional health and quality of life.

### **C. Trails and Pathways Defined**

Sandpoint interprets the term 'trail' broadly to include sidewalks around and through parks, park pathways and enhanced paths on green streets, as well as unpaved pathways in natural resources areas and regional multi-modal trails. They are designed to provide walking, bicycling, and other non-motorized recreational opportunities. They also provide options for travel throughout the community by linking parks, recreation facilities, neighborhoods, schools, and other facilities.

#### *Multi-Use*

Multi-use (recreation or transportation based) trails may be either unsurfaced or treated with a hard surfacing material. Unsurfaced trails should be left in their natural condition or supplemented with gravel, bark chips, sand, or other material. Hard surfacing materials include concrete, asphalt, granite chips, or the most desirable, pervious paving materials. Pervious paving materials are the most sustainable approach as they allow water to enter the ground by virtue of their porous nature. The type of surfacing depends on soil type, slopes, location, intended uses, usage, and other conditions.

#### *Transportation*

Purely transportation-based trails should exist in the form of bike lanes and shared roadways. Bike lanes delineate the right of way assigned to bicyclists and motorists and provide for more predictable movements by each. Bike lanes also increase the total capacities of routes carrying mixed bicycle and motor vehicle traffic. Shared roads assist bicyclists with the lateral positioning in a shared lane with on-street parallel parking and in lanes that are too narrow for a motor vehicle and a bicycle to travel side by side within the same traffic

lane. They also alert road users of the lateral location bicyclists are likely to occupy, encourage safe passing of bicycles by motorists, and reduce the incidence of wrong-way bicycling.

Bike lanes and shared roadways should be painted with standard pavement symbols to inform bicyclists and motorists of the presence of bicyclists and/or bike lanes

#### D. Existing Trails and Pathways

The City of Sandpoint maintains all the pathways within City limits, both on City right-of-way and State right-of-way. The Parks and Recreation Department maintains pathways within City parks.

##### *Sandpoint to Dover Community Trail*

This multi-use trail extends from the City of Dover to downtown Sandpoint at Larch Street and is located on an abandoned railroad bed and trestle. This trail is dog friendly and has various stations with dog bags and garbage cans. North Idaho Bikeways obtained a \$310,000 federal grant for transportation enhancement to fund trail construction. This trail includes “Creed’s Crossing,” a trestle crossing Chuck Slough. This was paid for with a \$12,000 grant from the Forest Service. Also included in this trail is “Wendy’s Way,” a bike path connecting the present end of Lincoln Street to the existing Sandpoint/Dover trail. The \$20,000 project funding came from the City of Sandpoint, Sandpoint Rotary Club, and the Sandpoint Slam Committee. The Idaho State Forest Service installed workout stations along the connecting trail.

##### *Travers, Centennial, Great Northern Pathways*

The Sports complex at Travers, Centennial and Great Northern has paved pathways around the perimeter of each park. The Travers loop measures 0.57 miles, the Centennial loop 0.38 miles, and the Great Northern loop 0.49 miles. All of these loops are connected, and the entire loop surrounding all three parks measures approximately 1.25 miles.

##### *Lakeview Park Pathway*

This neighborhood park features a paved pathway that winds throughout the park and connects to the arboretum on Ella and the parking lot and boat launch area to the east of War Memorial Field.

##### *City Beach Park Pathway*

City Beach features a short, paved pathway that runs around the perimeter of the park, between the sandy beach and the grassy area.

##### *Long Bridge Trail*

The long bridge trail begins at the Power House and runs along Highway 95, connects with the Long Bridge and runs the length of the Long Bridge into Sagle.



Figure 26. Aerial photo of the Travers/Centennial/Great Northern sports complex and associated trails.



Map 5 on the following page (page 46) shows recommended trails and pathways within the City of Sandpoint. These recommended trails were discussed and thought-out at the community meeting held on July 2<sup>nd</sup>, 2009 and are simply the result of brainstorming. These trails are not concrete ideas; they can and will be altered until the best trail routes are defined.



## **F. Goals and Strategies**

The following goals and strategies should be checked off as they are completed. The goals and strategies were gathered from the results of our public involvement process, the Bicycle Advisory Committee and research from trail plans in various cities.

### **GOAL 1:** Develop an accessible, continuous trail system

#### STRATEGIES:

- ☐ Provide continuous loops with minimal gaps
- ☐ Provide loops of various lengths
- ☐ Provide numerous neighborhood connections
- ☐ Connect to adjacent city trails

### **GOAL 2:** Make trails functional as a transportation mode

#### STRATEGIES:

- ☐ Create bike lanes or shared roadways on major North-South routes such as Boyer and Division
- ☐ Create bike lanes or shared roadways on major East-West routes, connecting to the North-South routes
- ☐ Create commuter routes throughout Sandpoint connecting schools, parks, open space, and commercial centers
- ☐ Provide sufficient markings on the roadways when bike lanes or shared roadways are present
- ☐ Provide sufficient bicycle parking at all parks

### **GOAL 3:** Make trail use safe

#### STRATEGIES:

- ☐ Maximize visibility and physical access to trails from streets and other public lands
- ☐ Minimize vehicular conflicts and make all street crossings safer

### **GOAL 4:** Create an organized and easily understood trail system

#### STRATEGIES:

- ☐ Make trail alignments simple and logical
- ☐ Ensure that trails are well marked throughout the city by providing proper trail signage

### **GOAL 5:** Minimize visual and environmental impact of trail and trail users

#### STRATEGIES:

- ☐ Consider aquatic, plant, and wildlife habitat and needs when designing trail locations
- ☐ Make use of already available or already disturbed land where possible for trail alignments

### **GOAL 6:** Provide a quality experience for all users

#### STRATEGIES:

- ☐ Develop a variety of trail types encouraging all types of non-motorized usage

### **GOAL 7:** Encourage partnerships between the City and other entities

#### STRATEGIES:

- ☐ Develop trail partnerships with Federal, State, and Local jurisdictions, businesses, public and private schools, and citizens

**GOAL 8:** Provide appropriate trail maintenance and management

STRATEGIES:

- ☐ Provide resources for trail maintenance and management
- ☐ Provide dog stations and receptacles (where appropriate)

**GOAL 9:** Provide pedestrian access to parks

STRATEGIES:

- ☐ Prioritize parks as pedestrian destinations
- ☐ Construct sidewalks or other ADA accessible pathways around all parks

## CHAPTER 8: IMPLEMENTATION

---

### **A. Introduction**

To adequately implement the goals and targets set forth in the Parks, Recreation and Trails Master Plan, tools and guidelines must be provided to support ongoing monitoring and reporting.

It is envisioned that the goals and strategies will be reviewed on a regular basis and be utilized as a tool for decision-making. When completed, each goal and strategy should be updated within this document the bullet should be checked off with a digital check mark.

### **B. Communication Plan**

The Department of Parks and Recreation will keep staff, public officials, Parks and Recreation Commission and the public regularly updated with Master Plan goals and strategies.

Key communication actions will include:

- Management encourages innovation and sustainability leadership
- Website provides updated information on green projects goals accomplished to becoming more sustainable

### **C. Staffing**

Determine additional staffing needs for Master Plan implementation. Include communication with the Parks Supervisor and Recreation Supervisor during this process.

The creation of a new position within the Parks and Recreation Department in the next five years is recommended in order to successfully implement the goals and strategies stated in this plan. The new position will involve working closely with the Director of Parks and Recreation as well as other staff members in City Hall to particularly focus on sustainability including funding.

### **D. Financing**

Determine additional funding needed for Master Plan implementation and research potential funding sources including grants. Coordinate the Capital Improvement Plan with this document and update accordingly.

Implement Windbag Marina improvements to generate ongoing revenue for capital projects particularly those focused on sustainability.

### **E. City Reports**

Provide information on the implementation of Master Plan goals and strategies in all Parks and Recreation Commission meetings and reports.

### **F. Legislation**

The department should also actively support any state and federal legislation that directly pertains to promoting sustainability in public parks and recreation service

### **G. Americans with Disabilities Act (ADA)**

Sandpoint's parks should be accessible to all of its citizens regardless of age or disability. Elements of this plan enhance the accessibility of Sandpoint's parks. All parks with playground should have a portion that is ADA accessible. The City should also provide ADA certified water access. Additionally, as a part of this planning effort an ADA Plan for the entire parks system has been commissioned. It will be attached to this plan as an appendix when completed.

## APPENDICES

### Appendix A. Resident Survey Questions

1. What was is your overall opinion of the Sandpoint Parks system?  
☐ Very Satisfied   ☐ Satisfied   ☐ Dissatisfied   ☐ Very Dissatisfied
2. What type of park does the community most need in Sandpoint?  
☐ Small neighborhood parks   ☐ Large multi-use parks that serve the whole community  
☐ Natural areas   ☐ Sports facilities  
☐ Parks with lake or river frontage   ☐ Linear trail corridors  
☐ Off-leash dog parks   ☐ No additional parks or natural areas are need
3. In which of the areas listed below should the city focus its park and recreation efforts?  
☐ Acquiring land for future parks   ☐ Developing new parks on current city-owned land  
☐ Upgrade existing parks   ☐ Maintaining existing parks and facilities  
☐ Providing rec. programs and activities   ☐ Building new major facilities (fountain, athletic, etc.)  
☐ Maintaining parks with minimal environmental impact   ☐ Serving underserved areas
4. On a scale of 1 to 4, how would you rank the following public facilities in Sandpoint's parks?  

Please check the appropriate box:	1 – Poor	2 – Fair	3 – Good	4 – Excellent
Sports fields and courts				
Skateboarding areas				
Open play turf areas				
Covered group picnic shelters				
Walking/biking/running paths				
Lake/river access to boat, fish or swim				
Community gardens				
Playgrounds				
5. If your household does not use City parks, please check any of the following reasons which apply:  
☐ Absence of facilities   ☐ Lack of car/bike parking  
☐ Overcrowded   ☐ Lack of safe route to parks (no sidewalks, busy road)  
☐ Poorly maintained   ☐ Disability/age  
☐ Unsure where parks are located   ☐ Other (please explain) \_\_\_\_\_
6. How often does your household participate in Sandpoint's recreation department programs in a given year?  
☐ Never   ☐ 1-3 times   ☐ 4-6 times   ☐ 6+ times
7. What is the most informative and preferred method by which you receive information about the parks and recreation activities?  
☐ Email   ☐ Mail   ☐ Radio   ☐ Friends/family   ☐ Work   ☐ Other \_\_\_\_\_

8. On a scale of 1 to 4 please rank the availability of the programs offered by the recreation department in the following categories: *(Please check the appropriate box)*

	<b>1</b> <b>Unavailable</b>	<b>2</b> <b>Not Enough Programs Offered</b>	<b>3</b> <b>Adequate Programs Offered</b>	<b>4</b> <b>Too many Programs Offered</b>	<b>5</b> <b>Don't Know</b>
Youth Sports					
Adult Sports					
Arts and Crafts					
Camps					
Educational					
Aquatics					
Fitness					
Special Events					
Toddler Activities					
Senior Activities					

9. Please rank the importance of access to the following recreational activities:

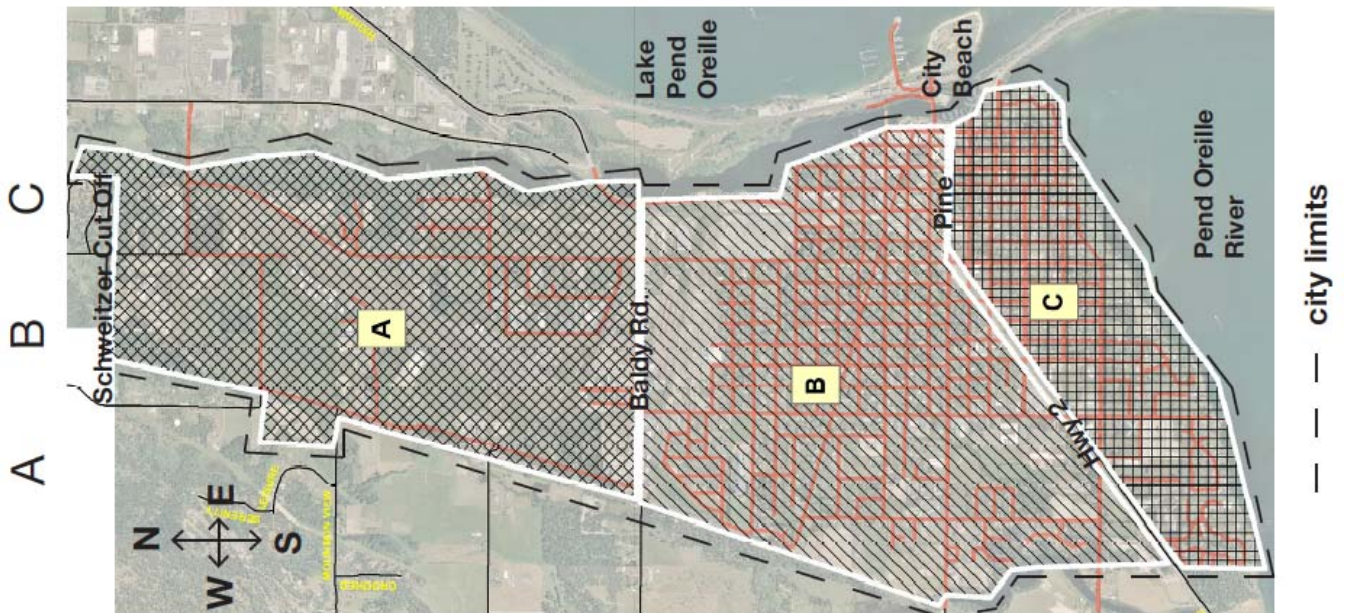
*(Please check the appropriate box)*

	<b>1</b> <b>Very Unimportant</b>	<b>2</b> <b>Important</b>	<b>3</b> <b><u>Unimportant</u></b>	<b>4</b> <b>Very <u>Unimportant</u></b>
Nature Enjoyment				
Walking/Jogging				
Special Events				
Picnicking/BBQ				
Playground Use				
Swimming				
Watching Sports				
Bicycling				
Bench Sitting				
Fishing				
Playing Sports				
Boating				
Dog Walking/Playing				
Horseshoes				
Skateboarding				



10. What type of trails does Sandpoint need more of? *Please check all that apply.*
- ☐ Running      ☐ Biking      ☐ Stroller/wheelchair      ☐ Equestrian
- ☐ Hiking      ☐ XC Skiing      ☐ Other, please explain \_\_\_\_\_
11. Any questions or comments? \_\_\_\_\_
12. How many people in each of the following age groups are in your household?
- ☐ Under 10      ☐ 11-17 years      ☐ 18-36 years      ☐ 37+ years
13. How long have you lived in Sandpoint?
- ☐ Less than 1 year      ☐ 2-10 years      ☐ Over 10 years
14. Do you live in a single family home?
- ☐ Yes      ☐ No
15. Do you rent or own?
- ☐ Rent    ☐ Own
16. Do any members of your household have a disability as defined by the Americans with Disabilities Act (ADA)?
- ☐ Yes      ☐ No
17. If you answered, "Yes," to #16, what types of accommodations are needed to serve people with disabilities in your family?
- ☐ Non-verbal Assistance (Braille)      ☐ Adaptive Equipment
- ☐ Sign Language Interpretation      ☐ Other \_\_\_\_\_

Please circle the region you live in:



## Appendix B. Survey Results

### Frequency Table for Q1

**Total # of Surveys** **716**

Return: 18.1%

#### **Q1. What is your overall opinion of the parks system?**

Code	Response Item	Frequency	Percent
1	Very Satisfied	101	14.1%
2	Satisfied	451	63.0%
3	Dissatisfied	83	11.6%
4	Very Dissatisfied	9	1.3%
5	Didn't Respond	72	10.1%
<b>Total</b>		<b>716</b>	<b>100.0%</b>

### Frequency Table for Q2

#### **What type of park does the community most need in Sandpoint? Please check all that apply.**

#### **Q2**

Code	Response Item	Frequency	Percentage	Percentage of Whole
1	Small Neighborhood Parks	27	1.6%	3.8%
2	Natural Areas	303	17.9%	42.3%
	Parks with Lake or River			
3	Frontage	330	19.5%	46.1%
4	Off-leash dog parks	312	18.4%	43.6%
	Large multi-use parks that serve the whole community			
5		197	11.6%	27.5%
6	Sports facilities	163	9.6%	22.8%
7	Linear trail corridors	297	17.5%	41.5%
	No additional parks or natural areas needed			
8		45	2.7%	6.3%
0	Didn't Answer	21	1.2%	2.9%
<b>Total</b>		<b>1695</b>	<b>100.0%</b>	

### Frequency Table for Q3

#### **In which of the areas listed below should the city focus its park and recreation efforts?**

#### **Q3**

Code	Response Item	Frequency	Percentage	Percentage of Whole
	Acquiring land for future parks			
1		250	15.2%	34.9%
2	Upgrading existing parks	176	10.7%	24.6%
	Providing recreation programs and activities			
3		152	9.3%	21.2%
	Maintaining parks with minimal environmental impact			
4		224	13.7%	31.3%
	Developing new parks on current city-owned land			
5		270	16.5%	37.7%
	Maintaining existing parks and facilities			
6		329	20.1%	45.9%
7	Building new major facilities	97	5.9%	13.5%
8	Serving underserved areas	97	5.9%	13.5%
0	Didn't Answer	45	2.7%	6.3%
<b>Total</b>		<b>1640</b>	<b>100.0%</b>	

## Frequency Table for Q4

**Q4**      On a scale of 1 to 4, how would you rank the following public facilities in Sandpoint's parks?

<b>Sports Fields and Courts</b>			
<u>Code</u>	<u>Response Item</u>	<u>Frequency</u>	<u>Percentage</u>
	1 Poor	18	2.5%
	2 Fair	100	14.0%
	3 Good	368	51.4%
	4 Excellent	146	20.4%
	5 Didn't Answer	84	11.7%
<b>Total</b>		<b>716</b>	<b>100.0%</b>

<b>Skateboarding Areas</b>			
<u>Code</u>	<u>Response Item</u>	<u>Frequency</u>	<u>Percentage</u>
	1 Poor	22	3.1%
	2 Fair	94	13.1%
	3 Good	321	44.8%
	4 Excellent	140	19.6%
	5 Didn't Answer	139	19.4%
<b>Total</b>		<b>716</b>	<b>100.0%</b>

<b>Open Play Turf Areas</b>			
<u>Code</u>	<u>Response Item</u>	<u>Frequency</u>	<u>Percentage</u>
	1 Poor	12	1.7%
	2 Fair	131	18.3%
	3 Good	334	46.6%
	4 Excellent	131	18.3%
	5 Didn't Answer	108	15.1%
<b>Total</b>		<b>716</b>	<b>100.0%</b>

<b>Covered Group Picnic Shelters</b>			
<u>Code</u>	<u>Response Item</u>	<u>Frequency</u>	<u>Percentage</u>
	1 Poor	82	11.5%
	2 Fair	265	37.0%
	3 Good	226	31.6%
	4 Excellent	67	9.4%
	5 Didn't Answer	76	10.6%
<b>Total</b>		<b>716</b>	<b>100.0%</b>

<b>Walking/biking/running paths</b>			
<u>Code</u>	<u>Response Item</u>	<u>Frequency</u>	<u>Percentage</u>
	1 Poor	59	8.2%
	2 Fair	204	28.5%
	3 Good	305	42.6%
	4 Excellent	95	13.3%
	5 Didn't Answer	53	7.4%
<b>Total</b>		<b>716</b>	<b>100.0%</b>

<b>Lake/river access to boat, fish or swim</b>			
<u>Code</u>	<u>Response Item</u>	<u>Frequency</u>	<u>Percentage</u>
1	Poor	80	11.2%
2	Fair	222	31.0%
3	Good	277	38.7%
4	Excellent	72	10.1%
5	Didn't Answer	65	9.1%
<b>Total</b>		<b>716</b>	<b>100.0%</b>

<b>Community Gardens</b>			
<u>Code</u>	<u>Response Item</u>	<u>Frequency</u>	<u>Percentage</u>
1	Poor	127	17.7%
2	Fair	232	32.4%
3	Good	184	25.7%
4	Excellent	50	7.0%
5	Didn't Answer	123	17.2%
<b>Total</b>		<b>716</b>	<b>100.0%</b>

<b>Playgrounds</b>			
<u>Code</u>	<u>Response Item</u>	<u>Frequency</u>	<u>Percentage</u>
1	Poor	27	3.8%
2	Fair	194	27.1%
3	Good	332	46.4%
4	Excellent	71	9.9%
5	Didn't Answer	92	12.8%
<b>Total</b>		<b>716</b>	<b>100.0%</b>

### Frequency Table for Q5

<b><u>If your household does not use City parks, please check any of the following reasons which apply:</u></b>				
<u>Code</u>	<u>Response Item</u>	<u>Frequency</u>	<u>Percentage</u>	<u>Percentage of Whole</u>
1	Absence of facilities	33	3.9%	4.6%
2	Overcrowded	57	6.7%	8.0%
3	Poorly maintained	12	1.4%	1.7%
4	Unsure where parks are locate	33	3.9%	4.6%
5	Lack of car/bike parking	35	4.1%	4.9%
6	Lack of safe route to parks	62	7.3%	8.7%
7	Disability/age	71	8.4%	9.9%
8	Other	78	9.2%	10.9%
0	Didn't Answer	465	55.0%	64.9%
<b>Total</b>		<b>846</b>	<b>100.0%</b>	

### Frequency Table for Q6

<b><u>How often does your household participate in Sandpoint's recreation department programs in a given year?</u></b>			
<u>Code</u>	<u>Response Item</u>	<u>Frequency</u>	<u>Percentage</u>
1	Never	308	43.0%
2	1-3 Times	277	38.7%
3	4-6 Times	53	7.4%
4	6+ Times	37	5.2%
0	Didn't Answer	41	5.7%
<b>Total</b>		<b>716</b>	<b>100.0%</b>

## Frequency Table for Q7

**Q7** What is the most informative and preferred method by which you receive information about the parks and recreation activities?

<u>Code</u>	<u>Response Item</u>	<u>Frequency</u>	<u>Percentage</u>	<u>Percentage of Whole</u>
1	Email	130	13.6%	18.2%
2	Mail	332	34.8%	46.4%
3	Radio	86	9.0%	12.0%
4	Friends/family	152	15.9%	21.2%
5	Work	29	3.0%	4.1%
6	Other	175	18.4%	24.4%
0	Didn't Answer	49	5.1%	6.8%
<b>Total</b>		<b>953</b>	<b>100.0%</b>	

## Frequency Table for Q8

**Q8** On a scale of 1 to 4 please rank the availability of the programs offered by the recreation department in the following categories:

<b>Youth Sports</b>				
<u>Code</u>	<u>Response Item</u>	<u>Frequency</u>	<u>Percentage</u>	
1	Unavailable	4	0.6%	
2	Not Enough Programs Offered	57	8.0%	
3	Adequate Programs Offered	335	46.8%	
4	Too Many Programs Offered	9	1.3%	
5	Don't Know	194	27.1%	
0	Didn't Answer	117	16.3%	
<b>Total</b>		<b>716</b>	<b>100.0%</b>	

<b>Adult Sports</b>				
<u>Code</u>	<u>Response Item</u>	<u>Frequency</u>	<u>Percentage</u>	
1	Unavailable	6	0.8%	
2	Not Enough Programs Offered	109	15.2%	
3	Adequate Programs Offered	267	37.3%	
4	Too Many Programs Offered	7	1.0%	
5	Don't Know	201	28.1%	
0	Didn't Answer	126	17.6%	
<b>Total</b>		<b>716</b>	<b>100.0%</b>	

<b>Arts and Crafts</b>				
<u>Code</u>	<u>Response Item</u>	<u>Frequency</u>	<u>Percentage</u>	
1	Unavailable	6	0.8%	
2	Not Enough Programs Offered	112	15.6%	
3	Adequate Programs Offered	242	33.8%	
4	Too Many Programs Offered	13	1.8%	
5	Don't Know	219	30.6%	
0	Didn't Answer	124	17.3%	
<b>Total</b>		<b>716</b>	<b>100.0%</b>	

<b>Camps</b>			
<u>Code</u>	<u>Response Item</u>	<u>Frequency</u>	<u>Percentage</u>
1	Unavailable	22	3.1%
2	Not Enough Programs Offered	137	19.1%
3	Adequate Programs Offered	137	19.1%
4	Too Many Programs Offered	5	0.7%
5	Don't Know	276	38.5%
0	Didn't Answer	139	19.4%
<b>Total</b>		<b>716</b>	<b>100.0%</b>

<b>Educational</b>			
<u>Code</u>	<u>Response Item</u>	<u>Frequency</u>	<u>Percentage</u>
1	Unavailable	8	1.1%
2	Not Enough Programs Offered	153	21.4%
3	Adequate Programs Offered	146	20.4%
4	Too Many Programs Offered	1	0.1%
5	Don't Know	264	36.9%
0	Didn't Answer	144	20.1%
<b>Total</b>		<b>716</b>	<b>100.0%</b>

<b>Aquatics</b>			
<u>Code</u>	<u>Response Item</u>	<u>Frequency</u>	<u>Percentage</u>
1	Unavailable	24	3.4%
2	Not Enough Programs Offered	160	22.3%
3	Adequate Programs Offered	141	19.7%
4	Too Many Programs Offered	1	0.1%
5	Don't Know	248	34.6%
0	Didn't Answer	142	19.8%
<b>Total</b>		<b>716</b>	<b>100.0%</b>

<b>Fitness</b>			
<u>Code</u>	<u>Response Item</u>	<u>Frequency</u>	<u>Percentage</u>
1	Unavailable	11	1.5%
2	Not Enough Programs Offered	147	20.5%
3	Adequate Programs Offered	171	23.9%
4	Too Many Programs Offered	3	0.4%
5	Don't Know	242	33.8%
0	Didn't Answer	142	19.8%
<b>Total</b>		<b>716</b>	<b>100.0%</b>

<b>Special Events</b>			
<u>Code</u>	<u>Response Item</u>	<u>Frequency</u>	<u>Percentage</u>
1	Unavailable	10	1.4%
2	Not Enough Programs Offered	82	11.5%
3	Adequate Programs Offered	217	30.3%
4	Too Many Programs Offered	5	0.7%
5	Don't Know	260	36.3%
0	Didn't Answer	142	19.8%
<b>Total</b>		<b>716</b>	<b>100.0%</b>



<b>Toddler Activities</b>			
<u>Code</u>	<u>Response Item</u>	<u>Frequency</u>	<u>Percentage</u>
1	Unavailable	13	1.8%
2	Not Enough Programs Offered	91	12.7%
3	Adequate Programs Offered	104	14.5%
4	Too Many Programs Offered	4	0.6%
5	Don't Know	353	49.3%
0	Didn't Answer	151	21.1%
<b>Total</b>		<b>716</b>	<b>100.0%</b>

<b>Senior Activities</b>			
<u>Code</u>	<u>Response Item</u>	<u>Frequency</u>	<u>Percentage</u>
1	Unavailable	22	3.1%
2	Not Enough Programs Offered	129	18.0%
3	Adequate Programs Offered	89	12.4%
4	Too Many Programs Offered	4	0.6%
5	Don't Know	345	48.2%
0	Didn't Answer	127	17.7%
<b>Total</b>		<b>716</b>	<b>100.0%</b>

### Frequency Table for Q9

**Q9**      **Please rank the importance of access to the following recreational activities:**

<b>Nature Enjoyment</b>			
<u>Code</u>	<u>Response Item</u>	<u>Frequency</u>	<u>Percentage</u>
1	Very Important	439	61.3%
2	Important	191	26.7%
3	Unimportant	23	3.2%
4	Very Unimportant	4	0.6%
0	Didn't Answer	59	8.2%
<b>Total</b>		<b>716</b>	<b>100.0%</b>

<b>Walking/Jogging</b>			
<u>Code</u>	<u>Response Item</u>	<u>Frequency</u>	<u>Percentage</u>
1	Very Important	409	57.1%
2	Important	233	32.5%
3	Unimportant	19	2.7%
4	Very Unimportant	9	1.3%
0	Didn't Answer	46	6.4%
<b>Total</b>		<b>716</b>	<b>100.0%</b>

<b>Special Events</b>			
<u>Code</u>	<u>Response Item</u>	<u>Frequency</u>	<u>Percentage</u>
1	Very Important	103	14.4%
2	Important	371	51.8%
3	Unimportant	122	17.0%
4	Very Unimportant	18	2.5%
0	Didn't Answer	102	14.2%
<b>Total</b>		<b>716</b>	<b>100.0%</b>

<b>Picknicking/BBQ</b>			
<u>Code</u>	<u>Response Item</u>	<u>Frequency</u>	<u>Percentage</u>
1	Very Important	129	18.0%
2	Important	367	51.3%
3	Unimportant	121	16.9%
4	Very Unimportant	19	2.7%
0	Didn't Answer	80	11.2%
<b>Total</b>		<b>716</b>	<b>100.0%</b>

<b>Playground Use</b>			
<u>Code</u>	<u>Response Item</u>	<u>Frequency</u>	<u>Percentage</u>
1	Very Important	214	29.9%
2	Important	307	42.9%
3	Unimportant	83	11.6%
4	Very Unimportant	29	4.1%
0	Didn't Answer	83	11.6%
<b>Total</b>		<b>716</b>	<b>100.0%</b>

<b>Swimming</b>			
<u>Code</u>	<u>Response Item</u>	<u>Frequency</u>	<u>Percentage</u>
1	Very Important	285	39.8%
2	Important	284	39.7%
3	Unimportant	69	9.6%
4	Very Unimportant	12	1.7%
0	Didn't Answer	66	9.2%
<b>Total</b>		<b>716</b>	<b>100.0%</b>

<b>Watching Sports</b>			
<u>Code</u>	<u>Response Item</u>	<u>Frequency</u>	<u>Percentage</u>
1	Very Important	93	13.0%
2	Important	347	48.5%
3	Unimportant	138	19.3%
4	Very Unimportant	49	6.8%
0	Didn't Answer	89	12.4%
<b>Total</b>		<b>716</b>	<b>100.0%</b>

<b>Bicycling</b>			
<u>Code</u>	<u>Response Item</u>	<u>Frequency</u>	<u>Percentage</u>
1	Very Important	336	46.9%
2	Important	269	37.6%
3	Unimportant	36	5.0%
4	Very Unimportant	13	1.8%
0	Didn't Answer	62	8.7%
<b>Total</b>		<b>716</b>	<b>100.0%</b>

<b>Bench Sitting</b>			
<u>Code</u>	<u>Response Item</u>	<u>Frequency</u>	<u>Percentage</u>
1	Very Important	134	18.7%
2	Important	330	46.1%
3	Unimportant	130	18.2%
4	Very Unimportant	45	6.3%
0	Didn't Answer	77	10.8%
<b>Total</b>		<b>716</b>	<b>100.0%</b>

<b>Fishing</b>			
<u>Code</u>	<u>Response Item</u>	<u>Frequency</u>	<u>Percentage</u>
1	Very Important	144	20.1%
2	Important	272	38.0%
3	Unimportant	178	24.9%
4	Very Unimportant	43	6.0%
0	Didn't Answer	79	11.0%
<b>Total</b>		<b>716</b>	<b>100.0%</b>

<b>Playing Sports</b>			
<u>Code</u>	<u>Response Item</u>	<u>Frequency</u>	<u>Percentage</u>
1	Very Important	171	23.9%
2	Important	319	44.6%
3	Unimportant	92	12.8%
4	Very Unimportant	39	5.4%
0	Didn't Answer	95	13.3%
<b>Total</b>		<b>716</b>	<b>100.0%</b>

<b>Boating</b>			
<u>Code</u>	<u>Response Item</u>	<u>Frequency</u>	<u>Percentage</u>
1	Very Important	214	29.9%
2	Important	292	40.8%
3	Unimportant	98	13.7%
4	Very Unimportant	32	4.5%
0	Didn't Answer	80	11.2%
<b>Total</b>		<b>716</b>	<b>100.0%</b>

<b>Dog walking/playing</b>			
<u>Code</u>	<u>Response Item</u>	<u>Frequency</u>	<u>Percentage</u>
1	Very Important	267	37.3%
2	Important	233	32.5%
3	Unimportant	91	12.7%
4	Very Unimportant	53	7.4%
0	Didn't Answer	72	10.1%
<b>Total</b>		<b>716</b>	<b>100.0%</b>

<b>Horseshoes</b>			
<u>Code</u>	<u>Response Item</u>	<u>Frequency</u>	<u>Percentage</u>
1	Very Important	34	4.7%
2	Important	196	27.4%
3	Unimportant	268	37.4%
4	Very Unimportant	115	16.1%
0	Didn't Answer	103	14.4%
<b>Total</b>		<b>716</b>	<b>100.0%</b>

<b>Skateboarding</b>			
<u>Code</u>	<u>Response Item</u>	<u>Frequency</u>	<u>Percentage</u>
1	Very Important	72	10.1%
2	Important	241	33.7%
3	Unimportant	199	27.8%
4	Very Unimportant	112	15.6%
0	Didn't Answer	92	12.8%
<b>Total</b>		<b>716</b>	<b>100.0%</b>

### Frequency Table for Q10

**Q10**      **What types of trails does Sandpoint need more of?**

<u>Code</u>	<u>Response Item</u>	<u>Frequency</u>	<u>Percentage</u>	<u>Percentage of Whole</u>
1	Running	240	16.0%	33.5%
2	Biking	390	25.9%	54.5%
3	Stroller/wheelchair	168	11.2%	23.5%
4	Equestrian	59	3.9%	8.2%
5	Hiking	331	22.0%	46.2%
6	XC Skiing	210	14.0%	29.3%
7	Other	41	2.7%	5.7%
0	Didn't Answer	64	4.3%	8.9%
<b>Total</b>		<b>1503</b>	<b>100.0%</b>	

### Frequency Table for Q12

**Q12**      **How many people in each of the following age groups are in your household?**

<u>Total # of people in each age</u>	<u>Under 10</u>	<u>11-17 Years</u>	<u>18-36 Years</u>	<u>37+ Years</u>	<u>Total</u>
	222	186	353	944	<b>1705</b>

### Frequency Table for Q13

**Q13**      **How long have you lived in Sandpoint**

<u>Code</u>	<u>Response Item</u>	<u>Frequency</u>	<u>Percentage</u>
1	Less than 1 year	22	3.1%
2	2-10 Years	223	31.1%
3	Over 10 years	455	63.5%
0	Didn't Answer	16	2.2%
<b>Total</b>		<b>716</b>	<b>100.0%</b>

### Frequency Table for Q14

**Q14**      **Do you live in a single family home?**

<u>Code</u>	<u>Response Item</u>	<u>Frequency</u>	<u>Percentage</u>
1	Yes	646	90.2%
2	No	54	7.5%
0	Didn't Answer	16	2.2%
<b>Total</b>		<b>716</b>	<b>100.0%</b>

### Frequency Table for Q15

**Q15**      **Do you rent or own?**

<u>Code</u>	<u>Response Item</u>	<u>Frequency</u>	<u>Percentage</u>
1	Rent	154	21.5%
2	Own	541	75.6%
0	Didn't Answer	21	2.9%
<b>Total</b>		<b>716</b>	<b>100.0%</b>

### Frequency Table for Q16

**Q16** Do any members of your household have a disability as defined by the Americans with Disabilities Act (ADA)?

<u>Code</u>	<u>Response Item</u>	<u>Frequency</u>	<u>Percentage</u>
1	Yes	81	11.3%
2	No	609	85.1%
0	Didn't Answer	26	3.6%
<b>Total</b>		<b>716</b>	<b>100.0%</b>

### Frequency Table for Q17

**Q17** If you answered, "Yes," to #16, what types of accommodations are needed to serve people with disabilities in your family?

<u>Code</u>	<u>Response Item</u>	<u>Frequency</u>	<u>Percentage</u>
1	Non-verbal Assistance	0	0.0%
2	Adaptive Equipment	31	4.3%
3	Sign Language Interpretation	7	1.0%
4	Other	24	3.4%
0	Didn't Answer	654	91.3%
<b>Total</b>		<b>716</b>	<b>100.0%</b>

### Frequency Table for Q18

**Q18** Circle which region you live in

<u>Code</u>	<u>Response Item</u>	<u>Frequency</u>	<u>Percentage</u>
A	Region A - North North SP	35	4.9%
B	Region B - North SP	182	25.4%
C	Region C - South SP	116	16.2%
0	Didn't circle region	383	53.5%
<b>Total</b>		<b>716</b>	<b>100.0%</b>

## **Appendix C. Survey Comment Responses**

Reduce costs, cut expenses!

I do not want my tax money supporting dog owners

Need dog parks

Need a City art gallery for local and regional artists to exhibit. This would be an excellent way to attract more tourists and support our area artists. Many excellent artists here DO NOT SHOW in Sandpoint because there is no proper gallery to show their work.

DOG FRIENDLY!! More doggie poo bags, on-leash parks are satisfactory. Put diapers on geese.

Could use a beach type access by memorial field, dog-friendly parks

More parks with lake/river frontage!!!

Don't have time to enlist in senior recreation activities (unfortunately). Do not require off-leash, but have at least one dog-friendly park.

Live outside of town so rarely uses in-town arks. Most uses State parks

Doesn't use any of the rec programs, trails, etc.

Would love to see a carousel in Sandpoint. Camps for older teens.

Mountain park trails, trails around City Beach in winter, longer/farther trails for biking

It is very difficult to even walk on the sidewalks as they are in terrible shape – gravel on them, tree roots and no sidewalks. Broken concrete. Cars parked on sidewalks. Have to walk on the street.

More dog friendly areas in Sandpoint

No fountains please!

Longer trails, more connected

Nature trails

Sidewalks are in poor conditions, doesn't visit parks due to lack of shade

Majority of parks have too much focus on sports/noise. Too sports oriented not enough large trees and shady areas. Need nature and quiet parks. Really like Lakeview and arboretum area.

Need more community gardens

Better show where trails are to new comers. Not many toddler programs offered. Live across from non-dog park and people always have dogs. Dog poo in park. Need updated playgrounds and more for younger. Don't know where community garden is.

No more trails. Help the SSA, sailing program, and need an ice rink (hockey)

Don't provide enough information about parks and recreation activities

Safe connected routes. I want to walk safely anywhere in town

Would like to see dogs allowed in parks, on leash, with "doggy sanitary" stations.

Walking trails also. Kids are grown up – used to do rec programs a lot. Don't use parks often because you can't take dogs anywhere!

Need community golf course

Would love to see an aquatic center/Indoor Recreation Center

At this time do nothing until money is available. Use prisoners to maintain parks. Think less not more.

Family oriented parks



Arts and crafts rec programs for adults. Bicycle transportation paths on streets, continuous not convoluted, fragmented. Pay attention to senior needs as well you are much too youth focused. There are more seniors in the community than youth.

Would like to see ON-leash dog parks. Doesn't use City parks because dogs aren't allowed.

A nice lakefront path other than City Beach.

Not enough picnic shelters.

The old beach toys were WAY better. The playground toys are pretty boring. It's difficult to get safely to parks all over town. Bike path as weird/dangerous crossings (Division) that doesn't work well for young bikers. Want safe connected network of trails.

Need more bike trails and community gardens.

More XC skiing trails would be great, same with biking.

Please, we need more swim access. Existing options (City Beach) are inadequate.

More hiking trails like Mickinnick, equally rugged and close to town. Our parks are not as attractive as they could be, more trees, more plantings. More public water access.

Too many pets are droppings on trails.

Motorized trails, ATV, dirtbike, etc.

Walking trails

Longer trails with cardio/workout stations offered: pull-up bars, sit benches, e tc.

GOLF! Wants golf adult rec programs, wants access to golf, city doesn't have golf course.

Thank you for doing this survey!

Snow shoeing trails, amphitheatre.

Color blind. Maps should be number coded not color coded.

Walking trails. Playground cover needs to be less of a choking hazard for small children.

Ice skating!

Need dog park.

Thank you for asking : )

Need public golf course.

Keep motorized bikes off bike path. Need shoreline-walking path from City Beach to Ponderay. Need more boat moorage in City. Need safe bike lane from Hwy 2 up to Boyer to Schweitzer Cut-off Rd.

Wants a huge playscape playground like CDA, ID.

Public swimming pool.

Need an indoor pool. Would like to see on-leash dog friendly areas with doggie poo bags and water areas.

Golf course closer to Sandpoint.

Need more safe bike trails please! No fountain!

Just had 91<sup>st</sup> birthday, don't do much hiking.

It would be a good idea to include a parks plan in the development of the old LP site. Want to acquire land for new parks if current park land isn't enough.

We need a bigger skateboard park.

More cultural/historical natural history events and interpretive facilities. More unpaved hiking trails. Dogs need to be allowed in some parks not all parks. Dog parks with trails.

Dog swimming off-leash.

GOLF COURSE! We are a tourist destination without a public golf course. Why don't we have a public golf course?

We need bike trails that are safe from motorized vehicles.

Public swimming pool, indoor roller rink.

Trails with scenic enjoyment.

Need more continuous trails.

Need community swimming pool year round. Trails along the lake/river like Farragut would be great. Mickinnick is a great trail and close to home. Hall property is a very nice trail. Dover trail is good but it needs to go all the way to Ponderay and beyond.

Rules for bikers/skateboarders. Can't act as both cars and pedestrians. Before parks, bike paths. Sidewalks are in terrible shape.

Need places and parks where dogs are welcome especially when so many people in Sandpoint own dogs.

More playground equipment in Pine Street Park. Beach where dogs are allowed. Love the Dub's field garden. Travers satisfies the "large multi-use park" that serves the whole community. Parks that allow dogs!

Hiking, biking, running trails can all share same trail!

NO to off-leash dog parks!

Great start to the community gardens. Most trails should be multi-use.

Contribute to the extension of Mickinnick Trail.

Bike lanes! Connection to Ponderay-Walmart-Kootenai. Please post a universal handicapped sign with the new swing at memorial park so many people have no clue and may damage the equipment. Poor handicapped playground features except new swing.

Any plans to acquire the strip of Sand Creek shoreline behind the Panida/Gunnings Alley?

More flat soccer fields.

Love the POB trail. Please keep it going!

Dog friendly trails/parks! Why are no dogs allowed anywhere in Sandpoint? I've never lived anywhere that dogs were restricted from everything as here! Please reevaluate – there are lots of dogs in this town!

Need an online system of porting information. Myself and 4 friends are training for a half marathon and regularly run 5, 7, 9, and 11 miles. It's hard to find good loops to run in Sandpoint without running on the shoulders of busy roads. There is no where to take dogs. As a dog owner this is tough, but people here also don't pick up after their dogs, so there would need to be a change to that too. We need a system of trails so we can do a 10 mile run in a loop. Or so that strollers or seniors can walk a loop, not just down and back along Hwy 2. It would be great if the trails (both paved and nature trails) connected to open parks so families or bikers could use trails to get to recreation activities.

Multi-use trails between parks. Can skateboarders use park paths? Because they can't use City streets or sidewalks.

Police, fire, water, sewer, streets are where tax \$ should be spent. Have plenty of trails – don't need to be IN city. Most CITY doesn't need to provide recreational activities in question #9. Freely available without providing – or responsibility of schools. Why would the City provide toddler activities? Don't really need community gardens.

Baseball little league is terrible.

No Off-leash dog parks. NO sports facilities. No new major facilities.

Given the large number of dog owners in Sandpoint, Park accessibility should be a greater priority. Dogs that are well exercised AND well socialized are well behaved; ultimately better (canine) citizens. Dog friendly park/areas also enhance social relationships between neighbors. Sandpoint needs this cheap and easy improvement.

What is the schedule for the restoration of the Windbag Marina? Please mail update to marina boaters. Need more paths!

Other light competition for younger children.

Skatepark needs to be bigger. Keep bikers out of skatepark.

Keep all dogs out. Ticket all that don't obey.

Need disc golf.

I really like the addition of doggy bags and garbage cans on trails, although I try to bring my own bags. Garbage access is nice.

Too many darn exploitation areas (water access). Camp spaces are too close together and close to the roads. Plenty and just about too many parks. How about peace, quiet, and wildlife??? I live here because I love the wildlife and it's disappearing. Want to acquire land to preserve wildlife and provide educational/environmental programs and activities.

Safer bike lanes/trails through town would be lovely! At least on-leash dog parks would be nice!

A public pool is a must! Indoor for all season use.

Multi-use trails safe and fun.

We're ready for a community pool. The adult soccer program needs some serious love! Did it even happen last spring?

Lake access is limited and needs improvements (launches).

Thank you for the new toys at Lakeview for younger children. Snowshoeing trails, walking trails, indoor walking track. Please continue the Dover bike path to extend North of town.

There is a lot to do outside without going to a park, but not enough inside courts. Like none!!

Bike park/free ride/dirt jumps needs more places and access for mountain bike and bmx trails.

Sandpoint NEEDS a municipal golf course!

FIX THE ROADS!

Not a canine-friendly community.

Don't attend many parks because dogs aren't allowed!

More trash cans, benches.

Need indoor sports facilities for winter sports classes and community classes.

Not answering questions 15, 16, and 17 as the questions are inappropriate.

Please get the dogs off my lawn and parking strip between the sidewalk and curb. Arts and crafts and educational programs along with camps are all needed by non-athletic children and adults. Add parking off-street for existing parks. Extend bike path trails. People do not use playgrounds much or often. Flower baskets down town and best use of money instead of community gardens.

A system of paths connecting individual parks.

Dog walking trails (on leash) and open up current parks to leashed dogs.

Need more dog friendly areas.

It would be nice to have a bike path along Hwy 200 into town from Ponderay to Safeway.

Gentle hiking/biking trails.

Our dogs get stuck at home if we want to go to any parks with our kids. City Beach goose crap problem! It smells BAD!

Make parks and City Beach non-smoking!

Maintain parks without chemicals/fertilizers/herbicides! We are allergic to the chemicals and can't sit or walk barefoot on park grass : (

Why have separate paths? Not cost-effective. City doesn't need to provide lake/river access. City doesn't need to provide community gardens.

Do NOT give up public ownership of south end of Ella and any other small city properties. South end of Ella should have water access.

Don't need any rails.

City Beach smells and it's filthy. Pick up goose poop at City Beach. Can't bring our dogs anywhere except dog beach which doesn't have bathrooms for people – NOT accommodating. Dog trails so our dogs aren't left at home anymore.

I think the upkeep on lawns is horrible.

Sandpoint is the most unfriendly city for dogs. Want more revenue? Get dog friendly!!

Space to bike to hope – Extend shoulder? Thank you for this opportunity to answer questions and input.

Need natural, unpaved trails.

Can't take my dogs to any parks.

No bike parks : (

Allow dogs in parks like Ketchum, Idaho

Doesn't use parks because of sewer smell.

Dogs aren't allowed in any of the Sandpoint parks. LEASH requirements and fines for not picking up, along with pick up stations would make for responsible pet owners. LET US IN!! We are out there. Dog beach is gross and sketchy I find it scary. Please make leash laws.

Need walking trails.

No trails needed.

No time for parks.

Need walking trails.

How about fixing our streets, who cares about parks.

I think its embarrassing and abhorrent that a community of our size does not have a community center where swimming, ice skating, educational activities, family fun, sports is available. Let's focus on that! #1 Priority healthy living for all.

Need dog trails.

I wanted to use the park close to my home and walk my dog. But it says No Dogs Allowed. My dog is always on a leash, so I don't go to your parks. It's a shame that the public has spoiled it for people that pick up their animals. I have walked in the parks without my dog and they are very nice.

Would like a place to walk/run my dogs.

More dog friendly parks and trails

Can't take my dog to parks or walk them on trails.

Would be nice to be able to take our dog to park or beach even ON leash would be fine.

There are adequate trails, not enough light on them, especially during winter months. Like Travers/Cent/GN

Need any park that allows dogs! Even on leash is what we need. More snow-plowed trails during winter.

Parks aren't dog friendly for dogs on leash.

Need all the trail types.

We need ice skating facilities.

Make it safe to walk, run, scooter, bike.

We don't live in the City of Sandpoint nor do we want to.

No new trails needed at this time.

Biking trails out to Walmart because the highway is too dangerous to ride bike on.

I don't use parks because I'm unable to walk my dogs in the parks.

We need an indoor rec facility, winters are long.

No dogs allowed greatly reduces our park use.

Need trails for fitness (seniors) and commuting.

I am a senior. We have a pathetic senior facility.

My doctor told me to get a dog and walk, what a disappointment to not be allowed to walk in the parks! I think people should be able to walk their dogs on a leash, along the paths in all of Sandpoint parks between 5 am and 10 am as long as they pick up their poop – and have non-aggressive obedient certified dogs.

Need dog friendly trails.

I live on edge of city limits – there are no bike paths. Need running and biking areas. Ice rink and swimming pool!

Skateboarding areas/trails.

Don't know what's available.

Better access for safe biking all through town.

Please enforce dogs not allowed in parks!

We need a good municipal swimming pool.

Open parks to dogs (leashed) and fine those that don't pick up after their dogs.

Dogs are needed.

How about connecting Sandpoint to Kootenai by hiking trail?

I love Sandpoint's Parks and Recreation opportunities. What is a linear trail corridor? Skateboard park needs better supervision for smokers and rule breakers (bicycles).

My children are grown and I'm not familiar with any of the Rec activities. I would love a place to swim – unlike the Health Club, which is so expensive. I appreciate the Parks and Trail to Dover. We use them all the time. Beauty, exercise, and availability.

Need multi-use trails.

Safe bike path (for children) to City Beach. Need swim pool!

There is not ONE park you can walk dogs. Bag bins could be installed for dog owners to use. I take my own bag, however, in most metro areas – they are provided.

No trails needed!

More infant swings at Travers park. LOVE the new trail system at Travers-Cent-GN.

I have never received any information on recreation.

Mountain biking trails! We would like to see a public indoor pool – also an outdoor shallow “splash” pool for toddlers. Also ice skating/hockey facilities.

I would like to see more bike lanes throughout town. The Dover to Sandpoint rail is good. More paved trails like that are great for rollerblading and moms with strollers.

We need a golf course.

Not enough parking at Hickory Park.

Don't know all the trails available.

Shooting range requires upgrade to support increased usage.

Need fences around parks.

I think we have such nice parks in this town and I feel they are well maintained.

I prefer to use National Forests.

Dog walking trails. Stop tax increases.

Adding more trails might mean more dog poop on the trails so --- the skatepark is a mess! The kids make it a mess and ruin the area given to them. Shame : ) I don't use the parks because of the crappy skatepark kids.

We have good parks. We needs bike paths and a rec center.

Don't use parks because unable to take dogs in parks.

How do you/will you coordinate with the Bypass project? Good opportunity here to build on their plans for walking/biking trails and facilities.

Need bike path to get to City Beach.

Would like to see adult soccer, more natural areas, more bike paths.

I wanted so badly for some company to build a castle/park/garden on the large empty lot on Boyer and Larch. It's so much more important than Super 1 Foods! COME ON!!

Look to Bend, Oregon as your trail/park model. Acquire U of I Research Center (last of the in town green space).

Really want trails area developed more. So much room to grow with the lake/river access.

Lack of dog access! Need more dog areas with litter pick up bags. Dogs should be allowed in parks especially Travers. Need garbage cans and little bags and people will pick up if there is a garbage bag to throw away. Please consider!!!

We need a softball complex for tournaments.

At 88 my greatest pleasure is enjoying nature and water activity at (Beach) City park. I try to enjoy it daily. Excellent park. Dog owners need to honor signs.

Is there a bathroom at Hickory Street Park?

I'd like more bike that around town so my family and I can safely bike to City Beach and other areas.



Get bicycles off the roads and more bike lanes.

Need to be able to take your dog on trails! Cannot walk my dog on paths in parks.

Don't participate in rec programs due to cost! Need programs for low-income families.

A small dog park would be nice.

Walkways on Pine Street to Syringa. Kids walk on road because there is no path past park.

Trails aren't well lined. More LINKED bike trail with SAFE intersections!

Need more paths/trails, need more community gardens. How do I found out about rec programs? I would like botanical gardens, thai chi classes, tennis lessons, bird watching.

You should be very proud of your maintenance of all Sandpoint City Parks. Our children are grown; they have LOVED City rec programs. City Beach has been a favorite for my husband for 45 year.

Don't know of trails new to town.

Snow shoeing trails. We thank you for all that you do. My wife would like natural dirt trails.

Like to see all urban areas connected by walking-bike path system (good start so far).

Sandpoint needs more places to take your dog. Like somewhere to go swimming.

Need bike loop of varying lengths, 5+ miles. We need indoor recreational options! Look at Colorado cities for recreation centers. Boulder, CO open to all – no membership required. Encourages physical activity in LONG winter months. SWAC is not kid/family focused. Maybe cooperate to build a YMCA facility?

Having SAFE walking/biking network around town is very important, recreationally and just as alternative to cars. Natural parks with signs. Ice skating rink.

Need more sidewalks for the children. So many kids walk on these busy streets these days. You can't take your dogs to any parks that's poor. We can't bring the puppy where the children play.

Anything that creates new jobs would be a plus.

Too many unleashed dogs in parks where dogs are not allowed.

Eight feet wide is too wide – all sense of an intimate trail is lost.

Safe bike path to downtown/City Beach.

No sports facilities.

Nature trails.

Trails where the dogs can go also.

Walking and cycling from town to Ponderay and Kootenai. Thank you!

Consider diving class and fencing class. Ice skating. More winter special events. Connectivity would increase access.

Need public pool or aquatic center. Cultural festivities and events seriously lacking. Update BBQs. Need covered bench sitting areas. Hickory Park is only one I know of for infants and toddlers, but LPO students out of school cussing, smoking, and making out makes us not go there too often. Kiddie swings for infants or disable children.

I use parks and community garden this year.

I take grandkids to parks.

Excellent bike paths.

Need winter draw in town – ice skating and hockey. Everyone can't afford Schweitzer and SWAC. Check out the sports complex and youth center in Nelson, BC – an excellent example.

Need parks to walk dogs in. With bags to pick up dog poop.

Most activities are too expensive. My son can only pick 1 a year we would LOVE to be able to do more but can't afford it.

Hiking, biking, running and equestrian can all use same trails.

Questions 2, 3, and 10 = property tax increase – very underhanded.

Dog parks. Dog Beach is hard to get to. I think dogs on a leash should be allowed everywhere but owners should pick up the poop.

Keep the bikes out of the skate park! The skate park is too small and bikes are in there all the time.

Do what we have to do and do it.

We would love more paved trails.

Bike path needed on Pine Street.

Few groomed XC trails.

YOU ARE A HUGE TAX BURDEN AND AS USELESS AS ALL OTHER GOV'T AGENCIES – CITIZEN.

No place to walk dog.

I would like a place to walk the dog with the kids. Even change current park to dog accessible. If owners are responsible poo collectors and use a leash it would be nice to be able to have our dog join us on family outings.

We love City Beach.

Dog walking paths.

No trails needed.

Poor lighting at my intersections in town.

Your parks have several problems for the handicapped! Ask us! No more parks. No more tax increases. Very interesting to receive survey 2 days late!!! Received 8<sup>th</sup> of November. Using wheel chair going to park from Aspen Lane is scary! Too steep and spring water over end freezes!! We have enough recreational activities – No tax increases! Going up bridge is not good. Coming down worse. The bridge is not acceptable.

We use most of the parks often – more biking and hiking and swimming access would be great! Any plans for snowshoeing trails close to town?

More parks where dogs are allowed.

Thank you to all City employees – you do a good job in maintaining our parks – especially City Beach. It is a job to bring friends and family from out of town – Keep up the good work! : )

We desperately need a public ice rink/swimming pool (indoor). Go to Creston and look at their Community Center! It would be affordable winter activities for youth that we currently lack.

Need combo trail i.e. Dover/Sandpoint/Sagle/Etc.

My age – 82 – relates to my answers.

We need an indoor training facility for football and baseball.

Walking where there aren't cars. Please keep our taxes as low as possible.

They can be multi-use trails.

The bike paths need to safely connect through town to City Beach – Now it is rough and dangerous.

How about using some of this (money) for water and sewer updates! Seems to me this is excessive for just parks when we have other needs. I would like to be on the email list.

City Beach is overcrowded and too many young people. We don't have enough parks on the lake. More place to ride horses and access to Lake ride on beach.

I think you do well with parks. Need a lakeside trail to walk.

Even though I don't use rec programs my children and grand children have. I think it is a good thing.

Too expensive for strikers soccer to rent fields!

This City needs a municipal golf course.

Finish bike path to Baldy and one from Division to Boyer on Baldy.

Parks where dogs can be walked.

I would prefer a website that I can visit when I want/need rather than info actively coming to me.

We have a large lot (don't use parks much) but we do enjoy looking at our well-maintained parks.

#### Appendix D. Community Meeting Posters

Posters were distributed to businesses and bulletin boards around the community the week before each meeting.

*Poster from the July 2<sup>nd</sup>, 2009 Meeting:*

• The Future of Sandpoint's Parks, Recreation, and Trails •



date	location	time	Come express your opinion about the future of Sandpoint's Parks and Recreation System!
7/2/2009	COMMUNITY HALL	8:00 PM	

Poster from the August 4<sup>th</sup>, 2009 Meeting:



  
Experience the Possibilities

[http://www.cityofsandpoint.com/Parks\\_Rec/RecHome.asp](http://www.cityofsandpoint.com/Parks_Rec/RecHome.asp)

# **PARKS REC & TRAILS COMMUNITY MEETING**

**when:** Tuesday, Aug 4, 2009, 6:00pm

**where:** Community Hall

**who:** Department of Parks and Recreation

**why:** Express your opinion about  
developing park ideas and  
locations and the progress  
of our trails plan

## **Appendix E. Radio Ads**

The radio advertisements for community meetings were played on four local stations: KPND, KSPT, KIBR, and KTPO. They started the day prior to the meeting and ended the day of the meeting, playing four times each day.

*July 2<sup>nd</sup>, 2009 Community Meeting advertisement text:*

“The Sandpoint Department of Parks and Recreation is putting on a community meeting to discuss the future of Sandpoint parks, the recreation programs, and the trail systems. Attend the meeting and help express your opinion about the future of Sandpoint’s parks and recreation system. The meeting is this Thursday, July 2<sup>nd</sup>, 2009, 6PM at the Community Hall. This is a community meeting and ALL are invited, should you have any questions call Sandpoint Parks and Rec... (208) 263-3613.”

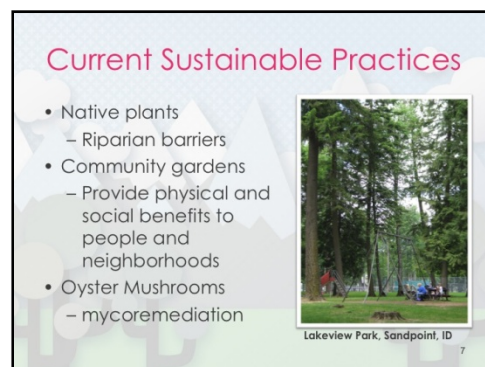
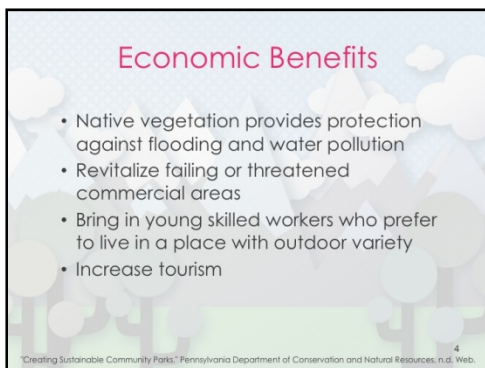
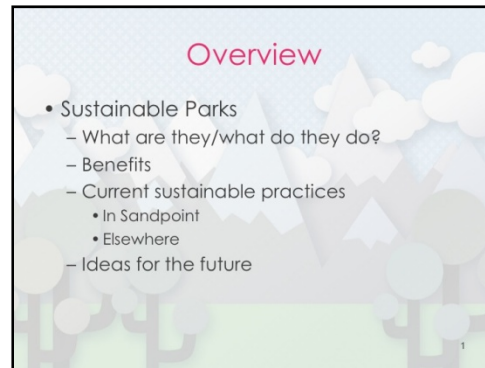
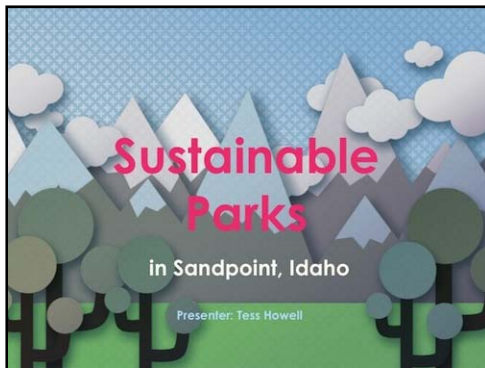
*August 4<sup>th</sup>, 2009 Community Meeting advertisement text:*

“The Sandpoint Department of Parks and Recreation is putting on a Community Meeting to discuss developing park ideas and locations as well as the progress of their Trails Plan... Everyone is invited to attend the meeting, express your opinion, and make a difference to the parks and trails of the Sandpoint community... The meeting is this Tuesday, the 4<sup>th</sup>, 6PM at the Sandpoint Community Hall... This is a community meeting and ALL are invited, should you have any questions, call Sandpoint Parks and Rec... (208) 263-3613.”



## Appendix F. Presentation Slides from Community Meetings

July 2<sup>nd</sup>, 2009 Community Meeting – Sustainability Presentation Slides



## Native Plants



Native plant riparian barrier at Lakeview Park

"Creating Sustainable Community Parks." Pennsylvania Department of Conservation and Natural Resources. n.d. Web.

Location: **Lakeview Park**

• Used in park and riparian buffer

Benefits:

- Effective in pollution filtration, flood prevention, and erosion control
- Provide valuable food for wildlife
- Require less supplemental watering, fertilizer, and other maintenance needs

8

## Mycoremediation

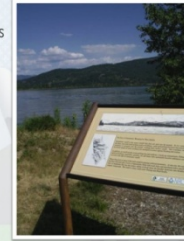
Location: **Lakeview Park**

Definition:

- The process of using mushrooms to return soil contaminated by pollutants to a less contaminated state

Benefits:

- Effective in breaking down hydrocarbons, aromatic pollutants, and chlorinated compounds
- Doesn't generate secondary waste
- Economical, minimal handling and maintenance



Informational sign discussing mycoremediation near Lakeview boat launch

9

## Community Garden

Location: **Old 9<sup>th</sup> Grade Center Field**

Benefits:

- Individuals and families have access to fresh food that supports nutritious health
- Promotes physical fitness and health
- Re-green vacant lots and bring vegetational diversity to public open spaces
- Provides social activity that builds a sense of community



Individual plots at the community gardens



10

## Eden Park – Cincinnati, OH

- Implemented solar, wind, and geothermal power
- Converted mowing equipment to biodiesel
- Implemented smart trashcans
- Constructed rain gardens



Eden Park

11

<http://www.theparkadvisor.com/locationPhotos-g28956-Ohio.html>

## City Hall – Seattle, WA

- Vegetated (living) roof
- Building design captures natural light
- Can accommodate solar panel array
- Rainwater retention reservoirs



Living roof on Seattle's City Hall

12

<http://www.greenroofs.com/projects/preview.php?id=310>

## Future Ideas

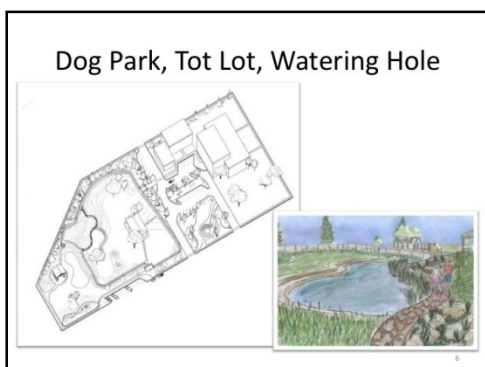
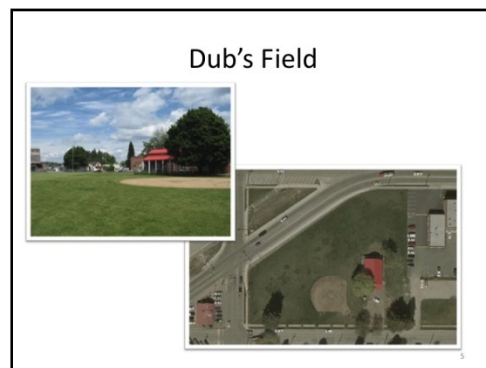
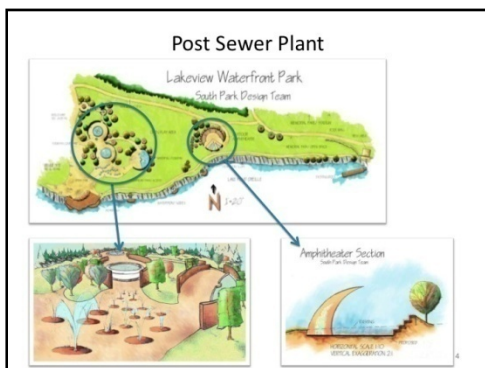
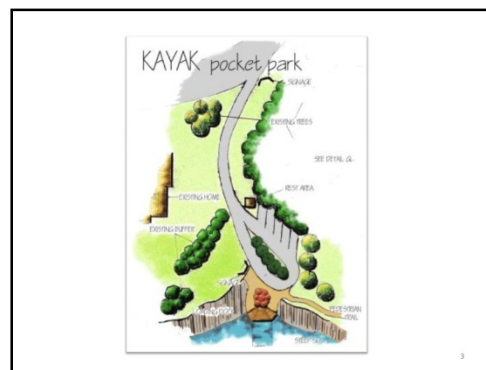
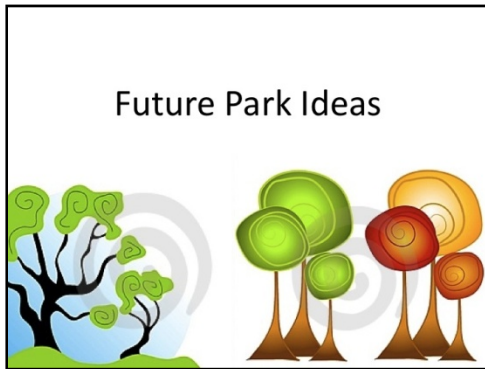
- Living roofs
- Solar power
- Rainwater/lakewater collection for irrigation
- Compost and mulch all yard waste for use within park
- Biogas production at sewer treatment facility
- Integrated Pest Management (IPM)
- Urban shared green spaces

13

# Thank You!

14

August 4<sup>th</sup>, 2009 Community Meeting – Future Park Ideas Presentation Slides





### Driveway Access



8



9

### Recycling at City Parks



10

### Terracycle



11

### Community Gardens



12

### Upgrade Lighting



13

### Dog Parks



14

### Wetlands



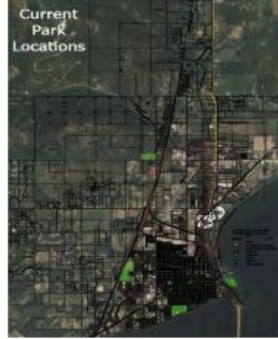
15

## Pocket Parks



16

## Current Park Locations



17

## Appendix G. Interest Group Meeting Questions and Answers

### Idaho Native Plant Society Meeting (Carol Jenkins-Pres.)

Monday, August 31, 2009

@ City Hall

email:

1. How frequently do you use Sandpoint Parks?
  - Trail Maintenance (Mickinnick and Pend Oreille Bay Trail)
2. What do you mainly use Sandpoint's Parks for?
3. If you could change one thing about Sandpoint's Parks what would it be?
  - Add more native plantings
  - Native plantings are exactly right in this tie and history
    - Good for water conservation, water run-off, etc.
4. What park(s) do you mostly visit?
  - Lakeview Park
5. How do the parks benefit your group?
6. As we move into the future what changes do you want to see in the parks?
  - Good plant signage
  - Help inform people of what the native plants are
  - No difficulty getting grant funding for signage
    - Idaho Community Foundation
7. How can we meet your needs within the parks in the future?
  - Need to be accessible to children and adults
  - Shaded areas, bench areas, integrating native plants over a period of time
8. Do you have any complaints about the parks?
  - None

#### Notes:

- Native plant society developed a list of native plants suitable for plantings/landscaping in Bonner County
  - Pictures will be added soon to this list
  - Will update our copy of the document
- Once plants are established don't need insecticides, herbicides, pesticides, etc.
- Provide most benefits to wildlife, butterflies, birds, etc.

## Kinderhaven Meeting

Friday, August 21, 2009

10:00 am @ Kinderhaven

1. How frequently do you use Sandpoint Parks?
  - Daily
2. What do you mainly use Sandpoint's Parks for?
  - Younger children use parks to play outside of their home/yard
    - Learn to ride their bikes at parks, swing, typical park usage
  - Older children (teens) use the parks to get away from home, be social, a getaway
  - Use parks for birthday parties
  - Use parks to meet with social workers, parents of kids, etc.
  - Take kids to parks to talk about things
3. If you could change one thing about Sandpoint's Parks what would it be?
  - Add more BBQ pits to City Beach and other parks
  - Water grass at 3<sup>rd</sup> street pier
4. What park(s) do you mostly visit?
  - Hickory, 3<sup>rd</sup> Street, City Beach, Pine Street, Travers
  - Mostly Hickory
5. How do the parks benefit your group?
  - The parks provide the children at Kinderhaven with a place to get away from home and life stresses
  - Provides them with a safe place to play, meet new children, meet with social workers or their families
6. As we move into the future what changes do you want to see in the parks?
  - More sustainable parks
  - MORE BIKE PATHS!
  - Open space to play games, set up volleyball nets, croquet, etc.
  - More parks in N. Sandpoint
7. How can we meet your needs within the parks in the future?
  - Acquire more space for parks
  - Keep parks clean, safe, and maintained
  - Pocket parks every few blocks would be nice
8. Do you have any complaints about the parks?
  - City Beach is too crowded
  - What happened to the Field of Dreams?
  - LPO lunchbreaks are terrible at Hickory Park



## North Idaho Bikeways Meeting

Monday, September 14, 2009

10:00 @ City Hall

email:

1. How frequently do you use Sandpoint Parks?
  - Use trails frequently, don't really use parks
2. What do you mainly use Sandpoint's Parks for?
3. If you could change one thing about Sandpoint's Parks what would it be?
  - All trails should connect the parks
4. What park(s) do you mostly visit?
  - Maintain bike path out in Sagle as well as Dover bike path
5. How do the parks benefit your group?
  - Provide destinations for trails
6. As we move into the future what changes do you want to see in the parks?
  - More trail markings directing people to trails
  - City Trail Map
  - Directions to other trails (sign, kiosk)

## **Sandpoint Farmer's Market Meeting**

Thursday, August 28, 2009

11:30 am @ City Hall

email: sandpointfarmersmarket@yahoo.com

1. How frequently do you use Sandpoint Parks?
  - Wednesdays 1:30 pm to 6:30 pm (Market from 3-5 pm)
  - Saturdays 7:30 am to 2:00 pm (Market from 8-1 pm)
2. What do you mainly use Sandpoint's Parks for?
  - Farmer's Market
3. If you could change one thing about Sandpoint's Parks what would it be?
  - No map for vendors!
4. What park(s) do you mostly visit?
  - Farmin Park
5. How do the parks benefit your group?
  - Farmin park provides a wonderful location for Farmer's Market
  - There are plenty of trees providing adequate shade
  - Central location close to businesses, easy for people to find
6. As we move into the future what changes do you want to see in the parks?
  - More power to various locations of the park (not essential, but would be convenient)
7. How can we meet your needs within the parks in the future?
  - Being more flexible with vendor locations
8. Do you have any complaints about the parks?
  - Dog doo baggie station is gone, would like to see about 4 throughout parks
  - The vendor map creates an issue, because vendors don't always need same amount of space each week, scheduling becomes difficult, want flexibility and more freedom!

## **Sandpoint Little League Meeting**

Thursday, August 28, 2009

11:00 am @ City Hall

email: [tdh11467@yahoo.com](mailto:tdh11467@yahoo.com)

1. How frequently do you use Sandpoint Parks?
  - Seasonal use
  - March through early June
  - Sometimes tournament play goes into July (smaller scale)
2. What do you mainly use Sandpoint's Parks for?
  - Baseball/T-ball
3. If you could change one thing about Sandpoint's Parks what would it be?
  - Add more fields so little league teams can grow
  - Benches to Dub's Field
  - Fence to keep kids from running into the street
  - Improve baseball diamond and outfield quality
  - Acquire more field space
4. What park(s) do you mostly visit?
  - Dub's Field
  - Traver's Park Fields 3 and 4
  - Pine Street
5. How do the parks benefit your group?
  - Without the parks Sandpoint Little League wouldn't be here
  - They can't afford to privatize and are very grateful for the parks and facilities provided to them
6. As we move into the future what changes do you want to see in the parks?
  - Acquire more field space
7. How can we meet your needs within the parks in the future?
  - More field space
8. Do you have any complaints about the parks?
  - Infield and outfield are poor quality, turf needs to be better (baseball quality)
  - Water doesn't absorb very well

## **Sandpoint Senior Center Meeting**

Thursday, September 17, 2009

9:15 @ 820 Main Street

email: sasi@coldreams.com

1. How frequently do you use Sandpoint Parks?
  - Don't frequently use them
2. What do you mainly use Sandpoint's Parks for?
  - N/A
3. If you could change one thing about Sandpoint's Parks what would it be?
  - More trails connecting parks
  - Need benches to REST (like people with walkers, etc.)
4. What park(s) do you mostly visit?
  - N/A
5. How do the parks benefit your group?
  - Parks/trails provide many groups at senior center a place to get out and exercise
    - Active Seniors use trails to ride bikes and walk
    - Group called Monday Morning Hikers uses them
6. As we move into the future what changes do you want to see in the parks?
  - Nice, wide, paved trails with plenty of benches
  - It would be great if there were restrooms on the long trails
7. How can we meet your needs within the parks in the future?
  - Adding benches
  - More signs (historical, educational, informational, etc.)
  - Would like to see senior recreation programs
    - Arts/crafts
      - Painting
      - Card Making
      - Jewelry Classes
8. Do you have any complaints about the parks?
  - None!

## **Sandpoint Transition Initiative Meeting**

Thursday, September 17<sup>th</sup>, 2009

4:00 pm @ City Hall

email: richard@gentleharvest.org

1. How frequently do you use Sandpoint Parks?
2. What do you mainly use Sandpoint's Parks for?
  - Community Garden
3. If you could change one thing about Sandpoint's Parks what would it be?
  - Have educational aspect
    - Community project/educational
  - Parking/new paths
    - Use porous concrete, especially when close to waterways
  - Always have edible landscape incorporated (fruit and nut trees)
  - Recycle leaves and mulch
4. What park(s) do you mostly visit?
  - Community Gardens at Old 9<sup>th</sup> Grade Center
5. How do the parks benefit your group?
  - Provide great locations for community gardens and sources for local food
6. As we move into the future what changes do you want to see in the parks?
  - Recycling programs in the park (talked about City Beach pilot project)
  - Start at pavilion
  - Need to encourage REDUCING waste, education and encourage reduction
    - Instead of promoting recycling
  - More community gardens
    - Don't all have to be run by STI
    - Various organizations/groups can take them on at different parks
7. How can we meet your needs within the parks in the future?
8. Do you have any complaints about the parks?
  - None

## Appendix H. Community Workshop CTA Charette Results

### City of Sandpoint | Parks Design Charrette

April 22nd, 2010

#### Pocket Parks

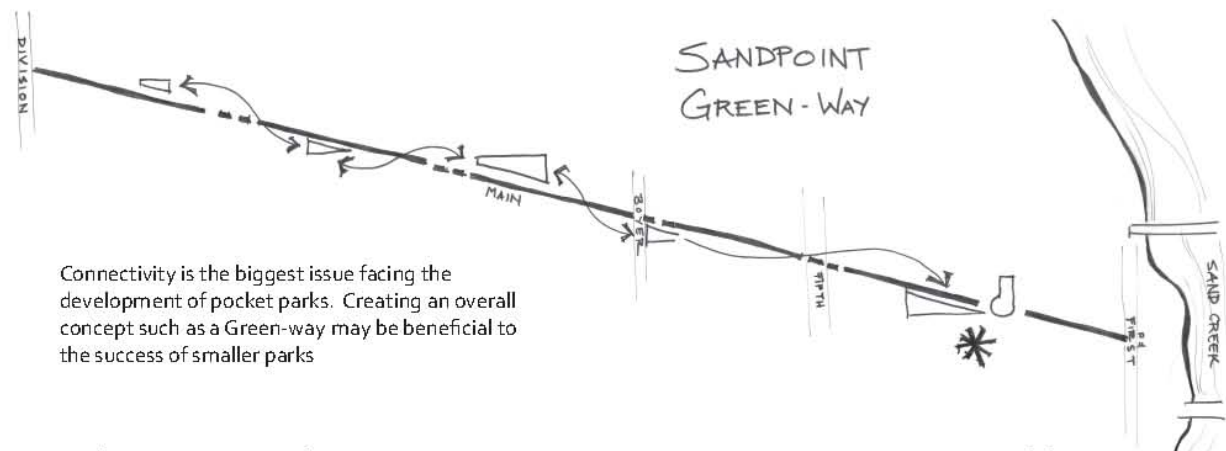
It was discussed early on in the design charrette that the City of Sandpoint has an extensive "active" park system. Instead of providing additional recreation areas, pocket parks were seen as a way to provide "passive" green space specific to each neighborhood. Some of the potential amenities have been listed in the column to the right.

These pocket parks should enhance the areas they are in and provide the amenities desired by the specific neighborhood they are located within. It is the intention that these parks will become cherished and used most heavily by those in direct proximity.

Another important observation was that many City owned parcels available for pocket parks are aligned along Main Street. This provides the perfect opportunity to create a Green-way through the heart of North Sandpoint and allow park access to a currently under served area of the City. If approached at in a cohesive manner the entire Main Street corridor, from First to Division, could be developed as a pedestrian friendly Green-way of linked parks.

#### Amenities

bike rack  
swings  
community garden  
sculpture  
public art  
berry parks  
chess  
checkers  
hackisack  
drinking fountain  
dog fountain  
bouldering features  
shuffle board  
crocket  
bocce ball  
rock features  
native plants  
trails  
shade  
walking spaces  
resting areas  
educational opportunities  
frisbee golf



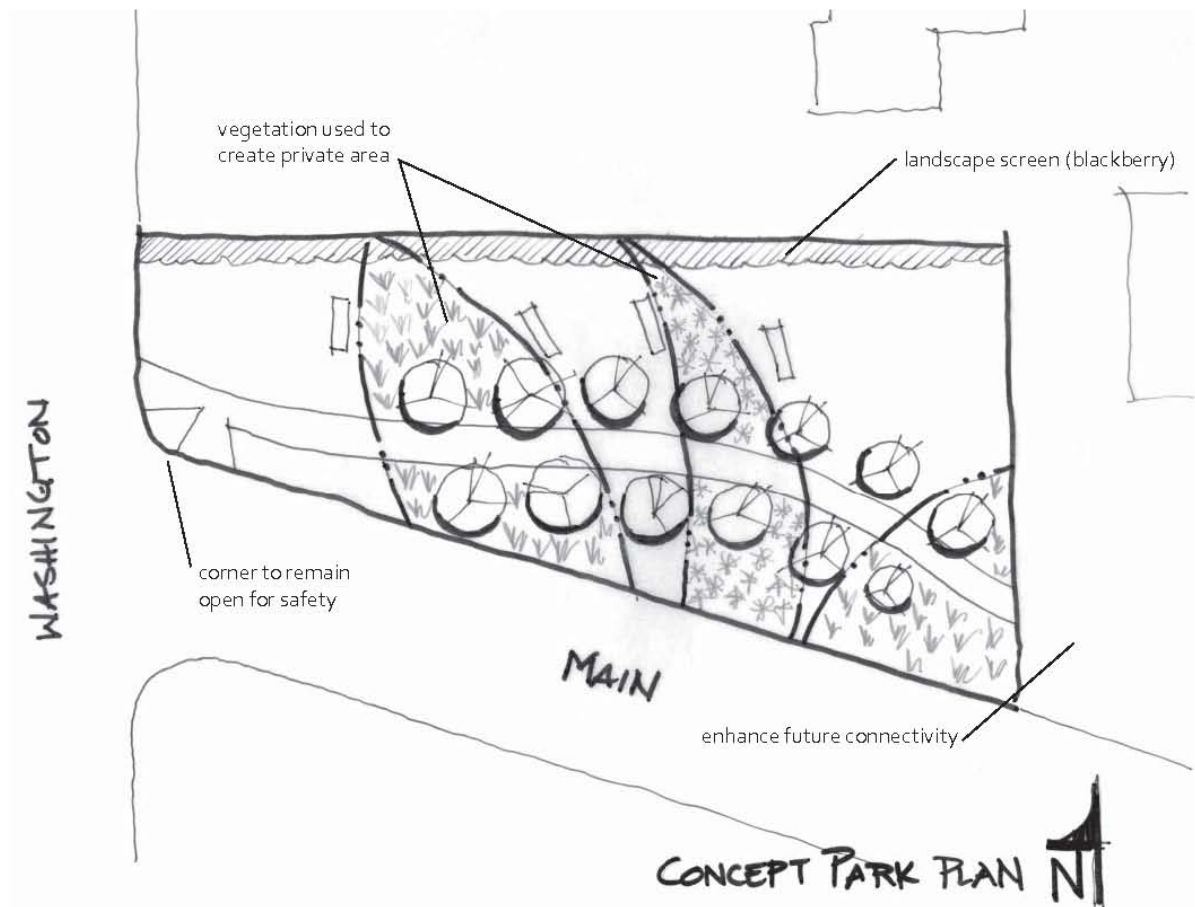
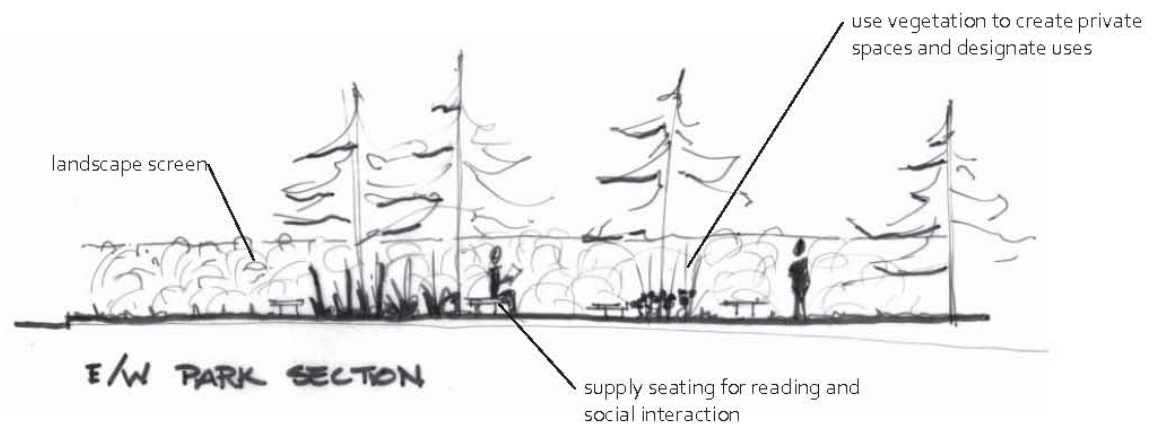
#### Waterfront Street End

Street end waterfront parks shall be designed according to the neighborhood in which they are located. However, during the design charrette it was the general consensus that these street end parks should not strive to create another Third Street pier. Instead, providing quiet access with few amenities seemed popular.

Sandpoint citizens explained their desire to simply have a nice place to sit and connect with the River. Attempts should be made to keep them local in their user base by reducing the amount of signage around entrances.

#### Amenities

water access  
kayak put in  
seating  
shelter  
trash can  
keep amenities small  
keep it local (limit signage)  
floating dock  
connect to water trail  
make rip rap safe  
vegetative buffer





# Recreation

## Conditions

Sandpoint has approximately 107 acres of parks in the city or within the Area of City Impact (ACI). Parks include facilities for both passive and active recreation including swimming, picnicking, baseball/softball, basketball, skate boarding, soccer, football, tennis, volleyball and even recreational shooting.

City park and recreation facilities range in size, activities and amenities. Residents of all ages can relax on the sand or swim in Lake Pend Oreille's waters at City Beach Park or launch recreational watercraft there and at Lakeview Park. Softball, soccer, football and baseball enthusiasts can play or watch games at War Memorial Field or Travers/Centennial Parks or take in a youth game at Dub's Field ("Old 9th Grade Center Field" on map).

A list of parks, their sizes and available facilities and activities is provided in Table 7.1 below. Sandpoint parks range in size from 0.25 acres to over 24 acres.

## Needs

Participants in the comprehensive planning process indicated strong support for



Figure 7.1 - Sandpoint's many world-class recreational opportunities - all within close proximity to downtown - are a critical part of life for residents. Maintaining and improving them over time is a critical planning priority. (Image source: camera exercise participant)

Sandpoint's parks system. Park and recreation facilities – whether improvements to existing facilities or new or expanded ones - consistently rated as a top priority. Based on comments received, parks and recreation needs include more access to Lake Pend Oreille, more urban parks, and more viable, multimodal connections between existing and future parks.

## Plan Concept

Parks are a cherished resource for Sandpoint residents and outdoor recreation plays a important role in residents' lives. The goals and policies in this plan seek to increase access to those existing parks, provide for more parks,

Table 7.1 – Existing Parks, Facilities

Park	Acres	Facilities/Activities
Sandpoint City Beach	18	Restrooms Food concession facility/deck Picnic shelter/picnic tables/BBQs Two boat launches Playgrounds Tennis courts Basketball court Horseshoe pits Sand volleyball courts <del>Three</del> <sup>Two</sup> life guarded swim areas (in season only) Two marinas Boat sewage pump-out Bicycle/pedestrian path Pedestrian bridge (Sand Creek)
3 <sup>rd</sup> Avenue Pier	0.25	Benches Picnic table Swimming and wading areas 2,200 sq. ft. green space 1,100 sq. ft. deck
Community Hall	2.5	5,400 sq. ft. building, w/ • Large kitchen • Large meeting room • 2 small meeting rooms • Restroom facilities
Travers Park/ Centennial Park	24.5	Skate Park Softball diamonds Baseball diamond Soccer fields Football fields Tennis courts Playground
Dubs Field	1.6	Youth baseball/softball field
Farmin Park	0.5	Bandstand Picnic tables BBQs Clock tower Public art
Jeff Jones Downtown Square	0.6	Bathroom Interactive fountain Benches Tables with chess boards
Hickory Park	2.3	Basketball court Benches Picnic tables Picnic shelter Play hill Playground “Tot Lot” Skateboard feature BBQs Neighborhood info kiosk
War Memorial Field	4.5	ART Memorial Football/soccer field Restrooms and concession buildings Ticket booth Field house Grandstand Bleachers Baseball field

Lakeview Park	13	Picnic shelters Picnic tables BBQs Tennis courts Basketball court/roller hockey rink Drinking fountains Restrooms Playground area Boat launch ramp Bike/pedestrian path through park
Pine Street Park	2	Little League baseball field Basketball courts Picnic tables Playground area with a swing set and slide
Mickinnick Trailhead	20	Trailhead facilities
Outdoor Shooting Range	6	Shooting range facilities
Great Northern Park	7.5	Sports Fields
Little Sand Creek Area	2	Passive Open Space
Humbird Park	2	Waterfront walking, benches and open space

Source: Sandpoint Parks and Recreation Department

and create viable, multimodal connections between neighborhoods and parks. All participants in the planning process wanted nearby, accessible parks, recognizing the recreational, social and natural opportunities such features provide. Given the City's prominent location on one of the region's most beautiful lakes, goals in this plan support increased public access to the shoreline in the form of parks and trail systems, and an overall growth pattern respecting the importance of Lake Pend Oreille as a public space.

A map locating each of Sandpoint's existing parks is included at the end of this chapter.



Figure 7.2 - Variety was an important consideration for plan participants, who supported passive and active, large and small parks facilities, improved shoreline and wilderness access, and youth-oriented facilities, like Sandpoint's skateboard park. (Image source: Studio Cascade, Inc.)

## ☒ Goal R-1: Parks

*Provide integrated and comprehensive parks and recreation facilities to serve Sandpoint's needs.*

### Policies

- A Maintain and enhance existing parks and recreation facilities and invest in new parks at a pace proportionate with growth on a cost effective basis.
- B Find opportunities to acquire new park lands near newer, or underserved neighborhoods.
- C Disperse parks and recreation facilities so that parks are located within at most one mile from any housing unit within city limits.
- D Link parks and recreation facilities with a network of safe paths, trails and/or sidewalks.
- E Explore partnership opportunities with other agencies and the private sector to expand parks and recreation offerings and/or share costs for providing services and land acquisitions.
- F Plan for the parks and recreation system, by establishing long-range priorities to guide investment.
- G Design and work toward a zero waste parks and recreation system.

## ☒ Goal R-2: Recreation

*Support recreation as an important component of Sandpoint community life.*

### Policies

- A Integrate parks and other public community spaces when considering development.
- B Plan for continued and increased public access to the community's shorelines.
- C Consider a variety of alternative uses for community open spaces that may be too small to function as parks, such as plazas or community gardens.

## ☒ Goal R-3: Open Spaces

*Incorporate environmentally sensitive areas and public open spaces into the parks and recreation system.*

### Policies

- A** Look for opportunities to incorporate wetlands trails, native plants and streams into parks.
- B** Collaborate with land trusts, cemeteries and other organizations to identify, acquire and or preserve open spaces.
- C** Encourage the development of a greenbelt trail system extending throughout the ACI, linking natural open space and recreational areas with primary multimodal transportation routes.
- D** Consider facilitating purchase or retention of existing open-space lands, through Transfer of Development Rights (TDR) or Purchase of Development Rights (PDR) programs.

