

Figure 1 - Streetscape View of the Original Design at 75%

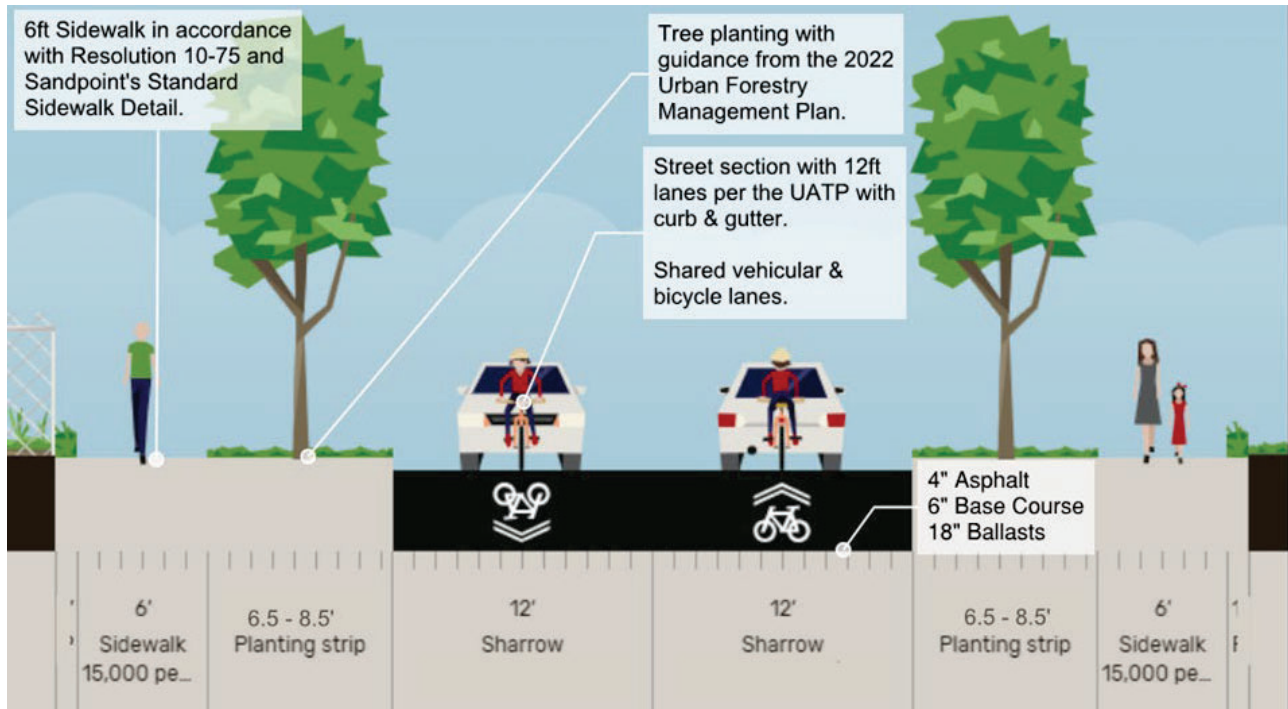


Figure 2 - Streetscape View of the Council's Design Direction

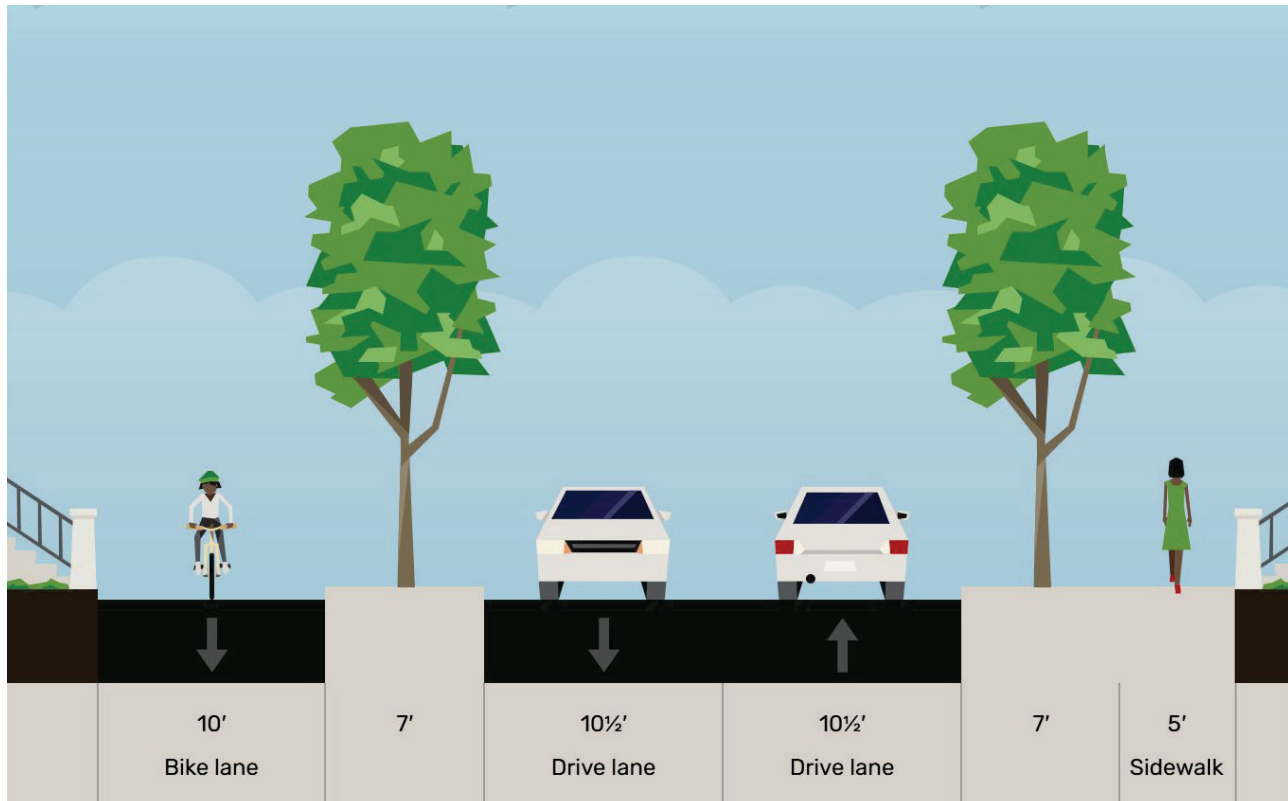


Figure 3

### Cedar Street Design Overview

Option #1 - Multimodal Path on the Southside - Keeping existing Sidewalk

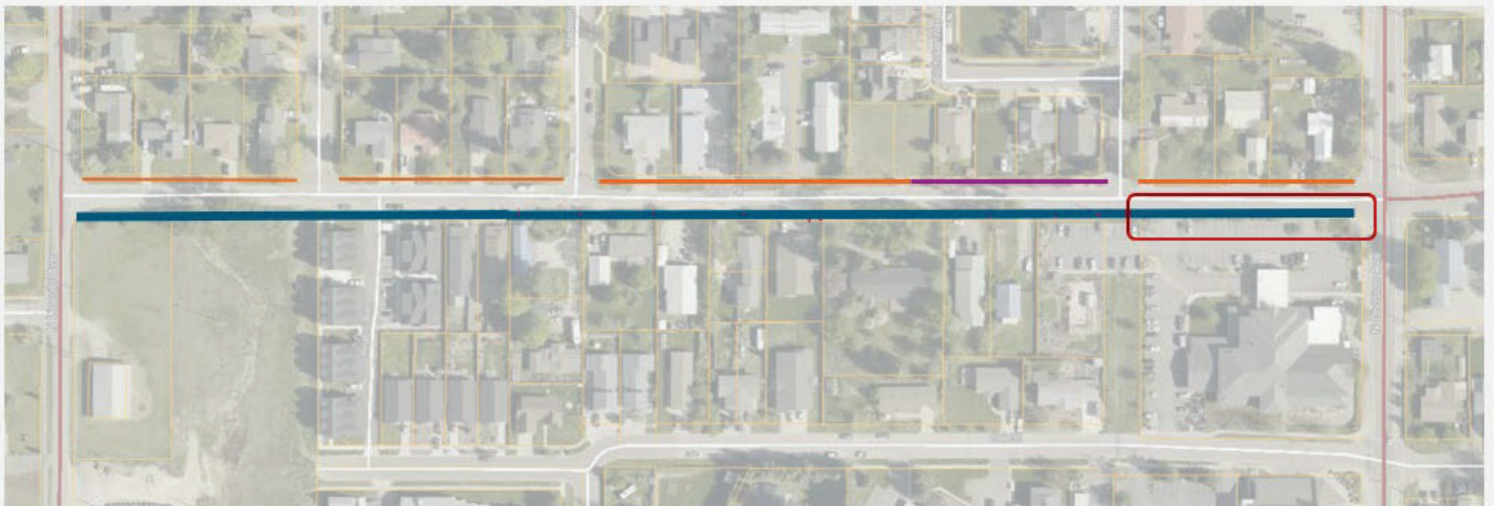


- 10' wide Asphalt Multimodal Path - New
- 6' wide Concrete Sidewalk - New
- 5' to 6' wide Concrete Sidewalk - Existing

Figure 4

### Cedar Street Design Overview

Option #2 - Continual Multimodal Path on the Southside - Replacing existing sidewalk



- 10' wide Asphalt Multimodal Path - New
- 6' wide Concrete Sidewalk - New
- 5' to 6' wide Concrete Sidewalk - Existing

Area not included in the reconstruction in the Original Scope (opt #3) or opt #1

Figure 5

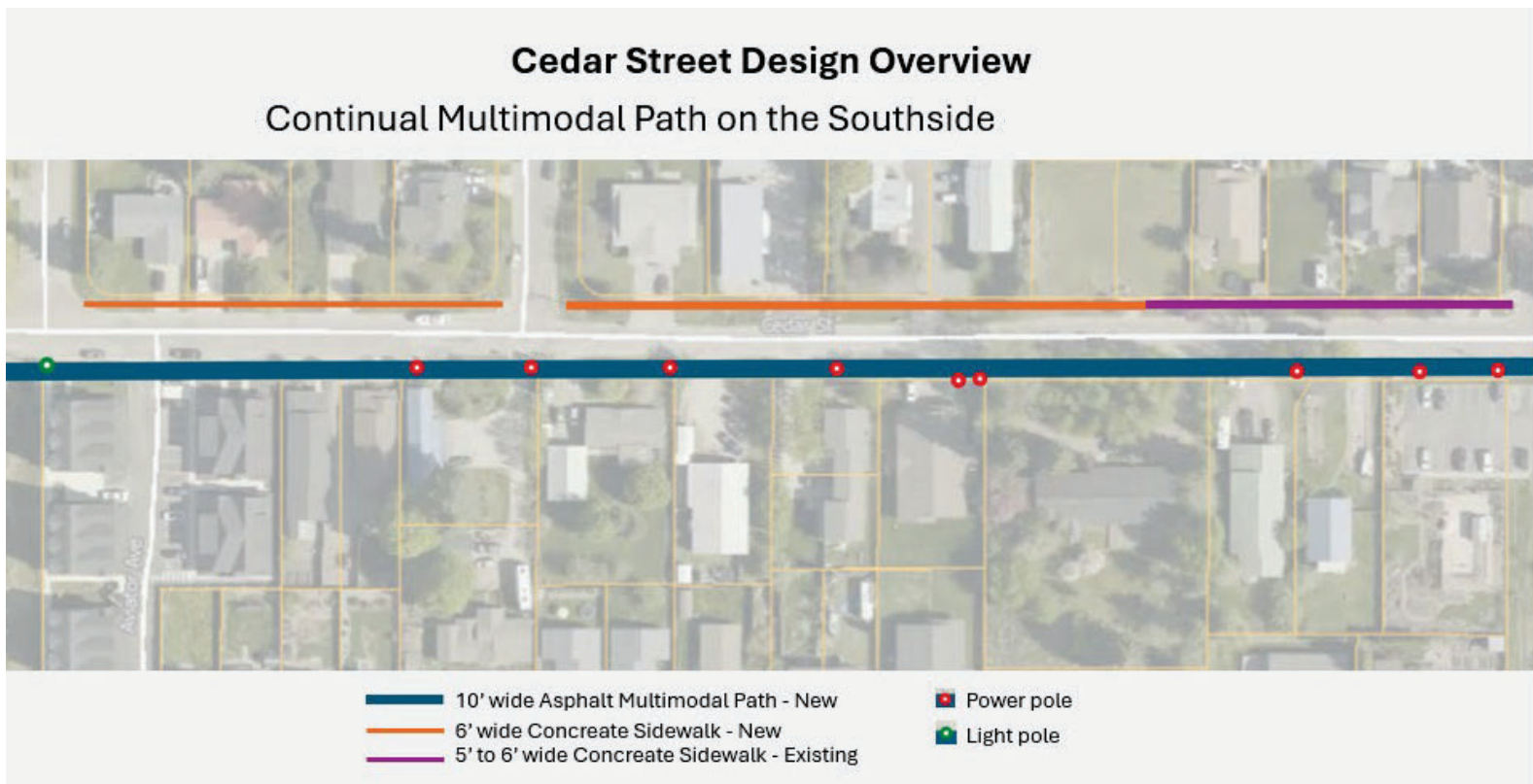


Figure 6 – Example of pole at in center of the bike path on New Waverly, Australia



Figure 7 - Streetscape View with Pole in Path

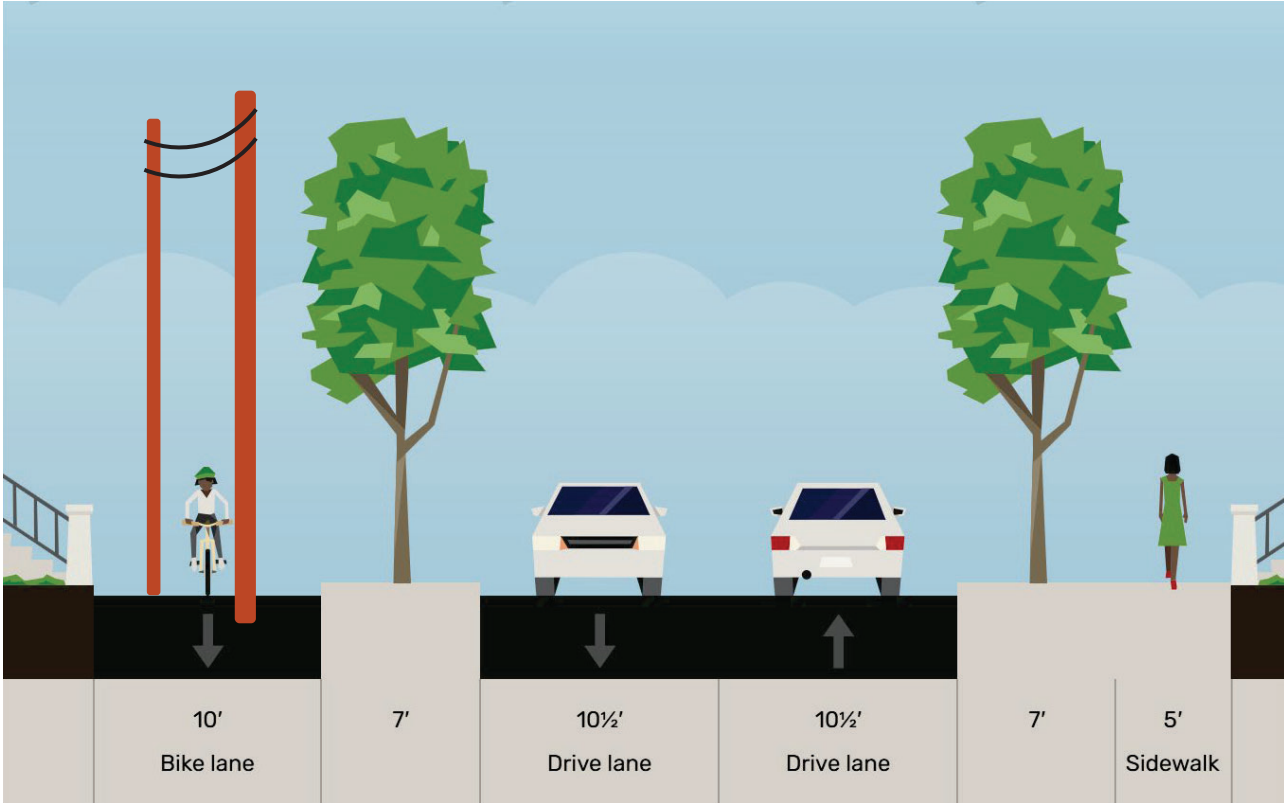


Figure 8 – Photos of power poles at The Library as an example of the power poles on the edge of the ROW in the sidewalk



Figure 9 – Light pole at 327 Cedar St in greenway



Figure 10 – Design Sheet noting location of power poles at 1605 & 1525 Cedar St.

- 9 INSTALL TYPE B (SWALE INLET WITH APRON) CONCRETE DRIVEWAY APPROACH PER DETAIL ON SHEET \_\_\_\_\_. SEE PLAN FOR CENTERLINE STATION, OFFSET, AND CURB FLOWLINE ELEVATION.
- 16 POWERPOLE WITHIN SIDEWALK LIMITS.

