



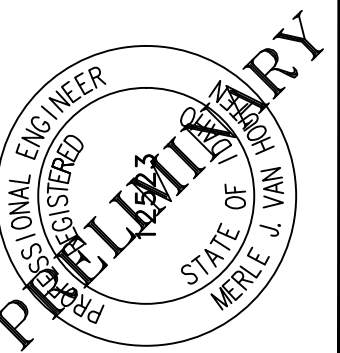
S FOURTH AVE REFERENCE NOTES			
NUMBER	STATION	OFFSET	DESCRIPTION
①	10+19	24.5'R	CONSTRUCT (1) PEDESTRIAN RAMP (TYPE F, ISPMC SD-712F) W/ DETECTABLE WARNING STRIP SAWCUT ASPHALT; REMOVE AND RECONSTRUCT 15 LF OF 6" VERTICAL CURB (NO GUTTER) AND ASPHALT.
②	10+31.30- 10+38.30	24.5'R	CONSTRUCT 5'X5' LANDING AT TOP OF RAMP THEN TAPER 8.5 LF OF 5 FT WIDE SIDEWALK TO JOIN BACK OF CURB
③	10+38.30- 10+83.50	20.5'R	NO EXISTING SIDEWALK CONSTRUCT 45 LF OF 5 FT WIDE SIDEWALK CONTRACTOR TO COORDINATE WITH CITY FOR RELOCATION/REPLACEMENT OF WATER METER - STA:10+80
④	10+86	20.5'R	REMOVE EXISTING CONCRETE STAIRS LEADING DOWN TO RESIDENCE. CONSTRUCT 5FT WIDE SIDEWALK JOINED TO CURB. RECONSTRUCT CONCRETE STAIRS BEHIND SIDEWALK PER ISPMC SD-713 WITH 12" TREAD AND 6" RISE TO EXISTING WALKWAY.
⑤	10+88- 11+27	20.5'R	NO EXISTING SIDEWALK CONSTRUCT 39 LF OF 5 FT WIDE SIDEWALK PLACE IMPORTED FILL TO CONSTRUCT 3:1 MAX BACK SLOPE FROM SIDEWALK TO LANDSCAPE ROCKERY COORDINATE LIMBING OF CEDAR TREES WITH CITY.
⑥	11+27	20.5'R	CONSTRUCT SIDEWALK TAPER TO CREATE 3 FT OF SEPARATION FROM TBC TO FACE OF WALK. 8 FT OF 5 FT SIDEWALK
⑦	11+35- 12+26	23.5'R	NO EXISTING SIDEWALK CONSTRUCT 91 LF OF 5 FT WIDE SIDEWALK REMOVE EXISTING LANDSCAPE PAVER WALKWAY TO 431 W FOURTH WHERE CONFLICTS WITH NEW SIDEWALK EXIST. CONTRACTOR TO COORDINATE WITH CITY FOR RELOCATION/REPLACEMENT OF WATER METER- STA 11+54.
⑧	12+45	23.5'R	SEE 421 FOURTH AVE ENLARGED DETAIL, SHEET C4.0
⑨	12+95	23.5'R	REPLACE BROKEN SIDEWALK PANEL
⑩	13+04- 13+45	23.5'R	SEE FOURTH AVE AND IDAHO ST ENLARGED INTERSECTION DETAIL, SHEET C4.0
NOTE: 1. PROTECT AND RETAIN EXISTING CURB TO THE GREATEST EXTENT FEASIBLE UNLESS NOTED OTHERWISE. 2. CONTRACTOR SHALL CONTACT THE CITY FOR A FORMING INSPECTION PRIOR TO PLACING CONCRETE. ADA TOLERANCES SHALL NOT BE EXCEEDED. 3. REFER TO SHEET C4.1 FOR HMA ROADWAY PATCHING DETAIL. 4. REFER TO SHEET C4.1 FOR CITY OF SANDPOINT STANDARD APPROACH DETAIL. 5. REFER TO ISPMC DWG NO SD-701 & 701A FOR 6" CURB & 6" CURB AND GUTTER DETAILS. 6. REFER TO ISPMC DWG NO SD-709 FOR CONCRETE SIDEWALK DETAIL. 7. REFER TO SHEET C4.2 FOR DIVERSION AND RAMPING AT TREES DETAILS. 8. REFER TO ISPMC SECTION 2030 FOR ALL UTILITY ADJUSTMENTS.			

LEGEND

- SIDEWALK CONSTRUCTION
- CURB CONSTRUCTION
- PLANT MIX PAVEMENT

SCALE 1"=20'
WHEN PRINTED AT 22"X34"

Know what's below.
Call before you dig.



SANDPOINT SIDEWALK
PROJECT 2025
4TH AVE STA:10+00 TO 13+60.00
SANDPOINT, IDAHO

REVISIONS		DESCRIPTION	BY
NO.	DATE		

DATE: 08/XX/2025	PROJECT: #25-025
PARCEL: N/A	DRAWN: SRP
CHECKED: WHI	PATH: I:\PROJECTS\2025\25-0250 - 2025 DESIGN\DWG\CIVIL\PRODUCTION DRAWINGS

C1.0
SHEET
2 OF 9

UNAUTHORIZED REPRODUCTION OR
TRANSLATION OF ANY PART OF THIS WORK
WITHOUT THE WRITTEN PERMISSION OF VAN
HOUTEN CONSULTING AND DESIGN, LLC IS
STRICTLY PROHIBITED.

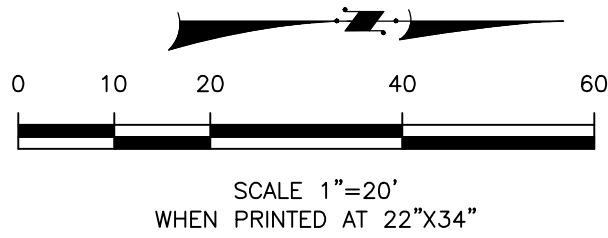


S FOURTH AVE REFERENCE NOTES			
NUMBER	STATION	OFFSET	DESCRIPTION
⑪	13+73	25.0'R	GRIND PEDESTRIAN RAMP JOINT RETAIN AND PROTECT PEDESTRIAN RAMP AND LANDSCAPE BLOCK WALL.
⑫	SEE DESCRIPTION	28.0'R	GRIND SIDEWALK JOINT STA: 14+13, 16+03, 16+48, 16+63
⑬	14+24	23.0'R	REMOVE EX. BRICK WALKWAY WITHIN SIDEWALK CORRIDOR AND REPLACE WITH 5 LF OF 5 FT WIDE SIDEWALK.
⑭	14+43- 14+93	23.0'R	REMOVE AND RECONSTRUCT 50 LF OF 5 FT WIDE SIDEWALK ACROSS 403 S FOURTH AVE CONTRACTOR TO COORDINATE WITH CITY FOR RELOCATION/REPLACEMENT OF WATER METER- STA: 14+49 CONSTRUCT 10FT WIDE CONCRETE DRIVEWAY APPROACH BEHIND EXISTING CURB CUT- STA: 14+83
⑮	15+10	20.0'R	REBUILD PEDESTRIAN RAMP TO ADA STANDARDS
⑯	15+88	23.0'R	REMOVE AND RECONSTRUCT (2) TWO SIDEWALK PANELS CENTERED ON TREE SEE SIDEWALK REPAIR RAMPING AT TREES DETAIL, SHEET C4.2 COORDINATE LIMBING OF TREE WITH CITY.
⑰	16+03	23.0'R	COORDINATE LIMBING OF THE TREE WITH CITY
⑱	17+00	23.0'R	RETAIN AND PROTECT PEDESTRIAN RAMP REMOVE AND RECONSTRUCT (3) THREE PANELS SOUTH OF RAMP CONSTRUCT 5 FT X 5FT RAMP LANDING AT 1.5% MAX SLOPE IN ANY DIRECTION CONSTRUCT REMAINDER OF SIDEWALK AT 5.0% MAX SLOPE.
NOTE: 1. PROTECT AND RETAIN EXISTING CURB TO THE GREATEST EXTENT FEASIBLE UNLESS NOTED OTHERWISE. 2. CONTRACTOR SHALL CONTACT THE CITY FOR A FORMING INSPECTION PRIOR TO PLACING CONCRETE. ADA TOLERANCES SHALL NOT BE EXCEEDED. 3. REFER TO SHEET C4.1 FOR HMA ROADWAY PATCHING DETAIL. 4. REFER TO SHEET C4.1 FOR CITY OF SANDPOINT STANDARD APPROACH DETAIL. 5. REFER TO ISPCW DWG NO SD-701 & 701A FOR 6" CURB & 6" CURB AND GUTTER DETAILS. 6. REFER TO ISPCW DWG NO SD-709 FOR CONCRETE SIDEWALK DETAIL. 7. REFER TO SHEET C4.2 FOR DIVERSION AND RAMPING AT TREES DETAILS. 8. REFER TO ISPCW SECTION 2030 FOR ALL UTILITY ADJUSTMENTS.			

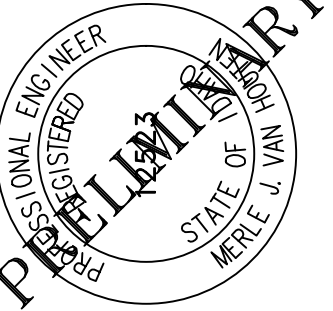
EROSION CONTROL REFERENCE NOTES			
NUMBER	STATION	OFFSET	DESCRIPTION
①	13+83.00	18.4'R	STORM DRAIN INLET
NOTES: 1. SEE INLET PROTECTION DETAIL, SHEET C4.1.			

LEGEND

- SIDEWALK CONSTRUCTION
- CURB CONSTRUCTION
- PLANT MIX PAVEMENT



Know what's below.
Call before you dig.



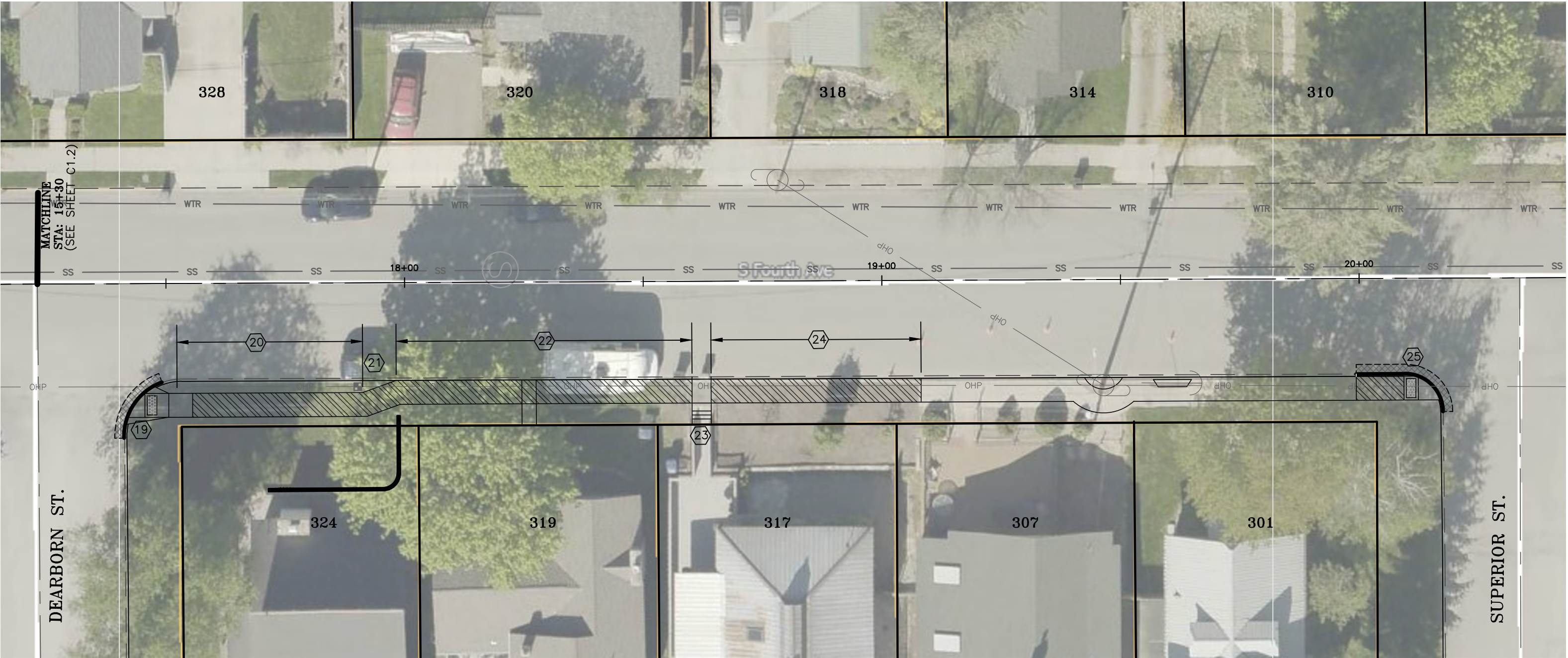
SANDPOINT SIDEWALK
PROJECT 2025
4TH AVE STA:13+60 TO 17+23
SANDPOINT, IDAHO

REVISIONS		BY	
NO.	DATE		

DATE: 08/24/2025	PROJECT: #25-025
PARCEL: N/A	DRAWN: SRP
CHECKED: MHI	PATH: I:\PROJECTS\2025\25-0250 -
2025 DESIGN\DWG\CIVIL\PRODUCTION	DRAWINGS




C1.1
SHEET
3 OF 9

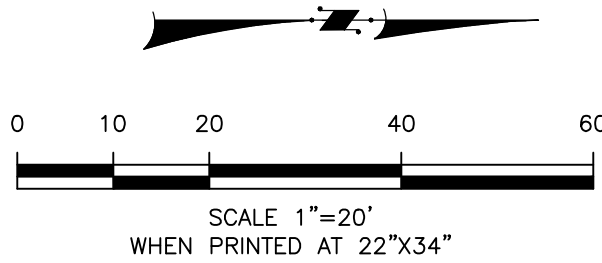
UNAUTHORIZED REPRODUCTION OR
TRANSLATION OF ANY PART OF THIS WORK
WITHOUT THE WRITTEN PERMISSION OF VAN
HOUTEN CONSULTING AND DESIGN, LLC IS
STRICTLY PROHIBITED.



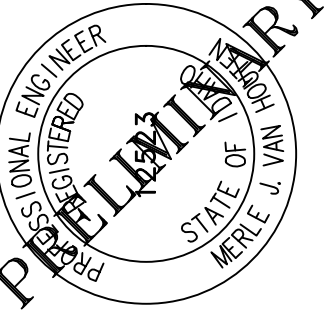
W FOURTH AVE REFERENCE NOTES			
NUMBER	STATION	OFFSET	DESCRIPTION
19	17+45	23.0'R	CONSTRUCT (1) PEDESTRIAN RAMP (TYPE F, ISPCW SD-712F) W/ DETECTABLE WARNING STRIP SAWCUT ASPHALT; REMOVE AND RECONSTRUCT 15 LF OF 6" VERTICAL CURB (NO GUTTER) AND ASPHALT.
20	17+51-17+91	23.0'R	CONSTRUCT 5' X 5' LANDING AT TOP OF RAMP AND THEN 35LF OF 5 FT WIDE SIDEWALK @ 1.5% MAX CROSS SLOPE.
21	17+91-17+98	23.0'R	TAPER 8.5 LF OF 5 FT WIDE SIDEWALK TO JOIN BACK OF CURB RETAIN AND PROTECT EX.WATER METER AND LANDSCAPE BLOCK WALL.
22	17+98-18+60	20.0'R	NO EXISTING SIDEWALK CONSTRUCT 62 LF OF SIDEWALK @1.5% MAX CROSS SLOPE. REMOVE EXISTING LANDSCAPE PAVER WALKWAY TO 431 W FOURTH WHERE CONFLICTS WITH NEW SIDEWALK OCCUR. CONTRACTOR TO COORDINATE WITH CITY FOR RELOCATION/REPLACEMENT OF WATER METER - STA:18+52
23	18+60-18+64	20.0'R	REMOVE EXISTING LANDSCAPE PAVER STAIRS LEADING DOWN TO RESIDENCE. CONSTRUCT 5FT WIDE SIDEWALK JOINED TO CURB. RECONSTRUCT LANDSCAPE PAVER STAIRS BEHIND SIDEWALK WITH 12" TREAD AND 6" RISE TO EXISTING WALKWAY.
24	18+64-19+08	20.0'R	NO EXISTING SIDEWALK CONSTRUCT 44 LF OF 4.5 FT WIDE SIDEWALK @ 1.5% MAX CROSS SLOPE.
25	20+12	20.0'R	REMOVE EXISTING CURB RAMP, (2) TWO SIDEWALK PANELS AND ADJACENT CURB. CONSTRUCT (1) PEDESTRIAN RAMP (TYPE "C3", ISPCW SD-712D) WITH DETECTABLE WARNING STRIP. SAWCUT ASPHALT, RECONSTRUCT 6" VERTICAL CURB (NO GUTTER) AND ASPHALT.
NOTE: 1. PROTECT AND RETAIN EXISTING CURB TO THE GREATEST EXTENT FEASIBLE UNLESS NOTED OTHERWISE. 2. CONTRACTOR SHALL CONTACT THE CITY FOR A FORMING INSPECTION PRIOR TO PLACING CONCRETE. ADA TOLERANCES SHALL NOT BE EXCEEDED. 3. REFER TO SHEET C4.1 FOR HMA ROADWAY PATCHING DETAIL. 4. REFER TO SHEET C4.1 FOR CITY OF SANDPOINT STANDARD APPROACH DETAIL. 5. REFER TO ISPCW DWG NO SD-701 & 701A FOR 6" CURB & 6" CURB AND GUTTER DETAILS. 6. REFER TO ISPCW DWG NO SD-709 FOR CONCRETE SIDEWALK DETAIL. 7. REFER TO SHEET C4.2 FOR DIVERSION AND RAMPING AT TREES DETAILS. 8. REFER TO ISPCW SECTION 2030 FOR ALL UTILITY ADJUSTMENTS.			

LEGEND

-  SIDEWALK CONSTRUCTION
-  CURB CONSTRUCTION
-  PLANT MIX PAVEMENT



Know what's below.
Call before you dig.



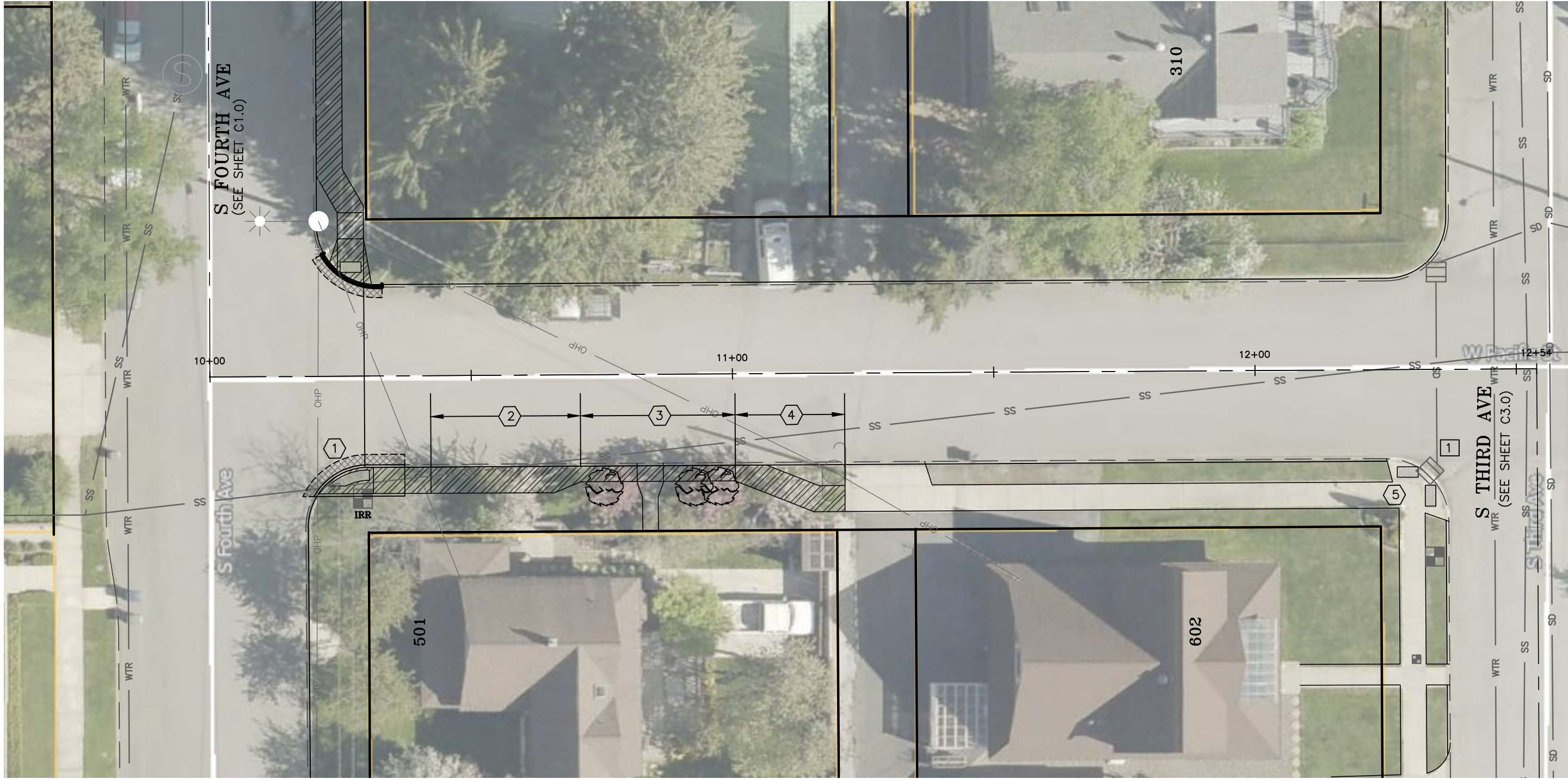
SANDPOINT SIDEWALK
PROJECT 2025
4TH AVE STA:17+23 TO END
SANDPOINT, IDAHO

REVISIONS		DATE	DESCRIPTION	BY
NO.				

DATE: 08/XX/2025	PROJECT: #25-025	PARCEL: N/A	DRAWN: SRP	CHECKED: WHI	PATH: I:\PROJECTS\2025\25-0250 - SANDPOINT SIDEWALK\PRODUCTION DRAWINGS
------------------	------------------	-------------	------------	--------------	---

C1.2
SHEET
4 OF 9

UNAUTHORIZED REPRODUCTION OR
TRANSLATION OF ANY PART OF THIS WORK
WITHOUT THE WRITTEN PERMISSION OF VAN
HOUTEN CONSULTING AND DESIGN, LLC IS
STRICTLY PROHIBITED.

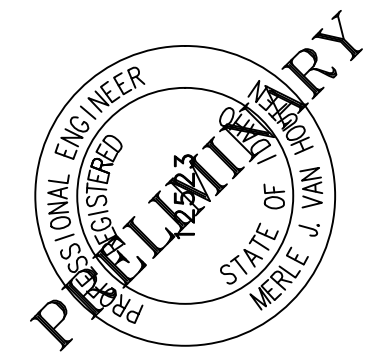
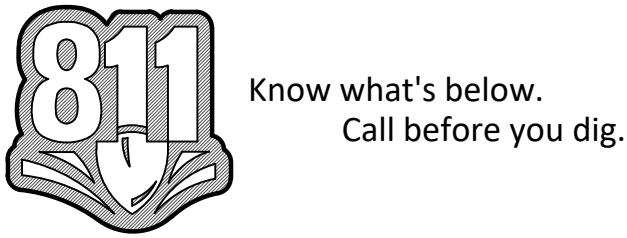
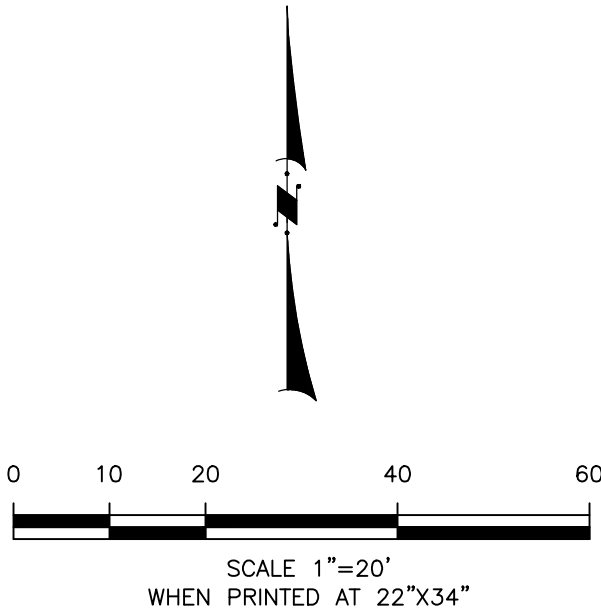


W PACIFIC AVE REFERENCE NOTES			
NUMBER	STATION	OFFSET	DESCRIPTION
①	10+20– 10+42	17.5'R	CONSTRUCT (1) PEDESTRIAN RAMP. ALIGN DETECTABLE WARNING STRIP WITH RAMP ON NORTH SIDE OF PACIFIC AVE. BEGIN RAMP EAST OF DETECTABLE STRIP (6 LF @8.3% MAX TO MATCH 6" CURB HEIGHT) 5' X 5' LANDING AT TOP OF RAMP. CONSTRUCT 6" WIDE CURB WHERE RAMP ABUTS LAWN. THE CURB IS 0" TALL AT TOP OF RAMP AND MATCHES CURB HEIGHT AT STREET. CONTRACTOR SHALL COORDINATE WITH CITY FOR RELOCATION OF IRRIGATION CONTROL BOX.
②	11+42– 10+70	17.5'R	CONSTRUCT 23 LF OF 5 FT WIDE SIDEWALK ADJACENT TO CURB THEN TAPER BACK OF SIDEWALK FROM 5 FT TO 3 FT FROM BACK OF CURB OVER A DISTANCE OF 6 FT.
③	10+70– 11+00	17.5'R	CONSTRUCT 30 LF OF 3 FT WIDE SIDEWALK ADJACENT TO CURB. RETAIN AND PROTECT EXISTING TREES AND WALKWAY TO 501 4TH ST.
④	11+00– 11+21	17.5'R	CONSTRUCT 10 LF SIDEWALK TAPER FROM 3 FT WIDE SIDEWALK ADJACENT TO CURB TO 5 FT WIDE SIDEWALK SEPARATED 4 FT FROM CURB. TAPERING SIDEWALK WIDTH IS 5 FT. CONSTRUCT 5 FT WIDE SIDEWALK FROM TAPER TO DRIVEWAY APPROACH. RETAIN AND PROTECT EX. POWER POLE AND CONCRETE APPROACH.
⑤	12+33	17.5'R	SEE PACIFIC ST AND 3RD AVE ENLARGED INTERSECTION DETAIL, SHEET C4.0
NOTE: 1. PROTECT AND RETAIN EXISTING CURB TO THE GREATEST EXTENT FEASIBLE UNLESS NOTED OTHERWISE. 2. CONTRACTOR SHALL CONTACT THE CITY FOR A FORMING INSPECTION PRIOR TO PLACING CONCRETE. ADA TOLERANCES SHALL NOT BE EXCEEDED. 3. REFER TO SHEET C4.1 FOR HMA ROADWAY PATCHING DETAIL. 4. REFER TO SHEET C4.1 FOR CITY OF SANDPOINT STANDARD APPROACH DETAIL. 5. REFER TO ISPMC DWG NO SD-701 & 701A FOR 6" CURB & 6" CURB AND GUTTER DETAILS. 6. REFER TO ISPMC DWG NO SD-709 FOR CONCRETE SIDEWALK DETAIL. 7. REFER TO SHEET C4.2 FOR DIVERSION AND RAMPING AT TREES DETAILS. 8. REFER TO ISPMC SECTION 2030 FOR ALL UTILITY ADJUSTMENTS.			

EROSION CONTROL REFERENCE NOTES			
NUMBER	STATION	OFFSET	DESCRIPTION
①	12+33	18.4'R	STORM DRAIN INLET
NOTES: 1. SEE INLET PROTECTION DETAIL, SHEET C4.1.			

LEGEND

- SIDEWALK CONSTRUCTION
- CURB CONSTRUCTION
- PLANT MIX PAVEMENT



SANDPOINT SIDEWALK
PROJECT 2025

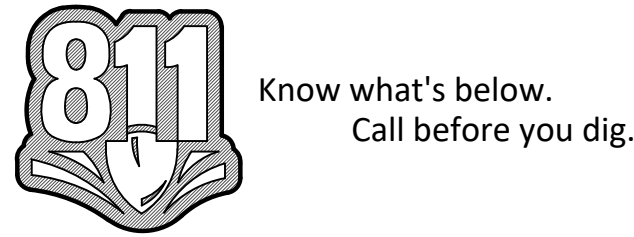
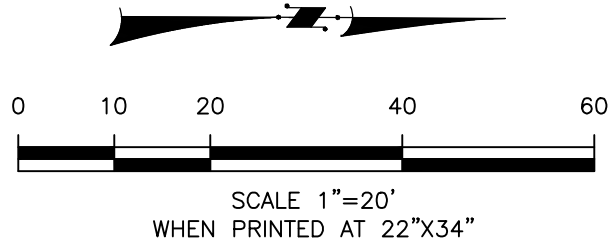
PACIFIC ST

SANDPOINT, IDAHO

REVISIONS		BY
NO.	DATE	

DATE: 08/24/2025	PROJECT: #25-025
PARCEL: N/A	DRAWN: SRP
CHECKED: WHI	PATH: I:\PROJECTS\2025\25-0250 - SANDPOINT SIDEWALK\PRODUCTION DRAWINGS

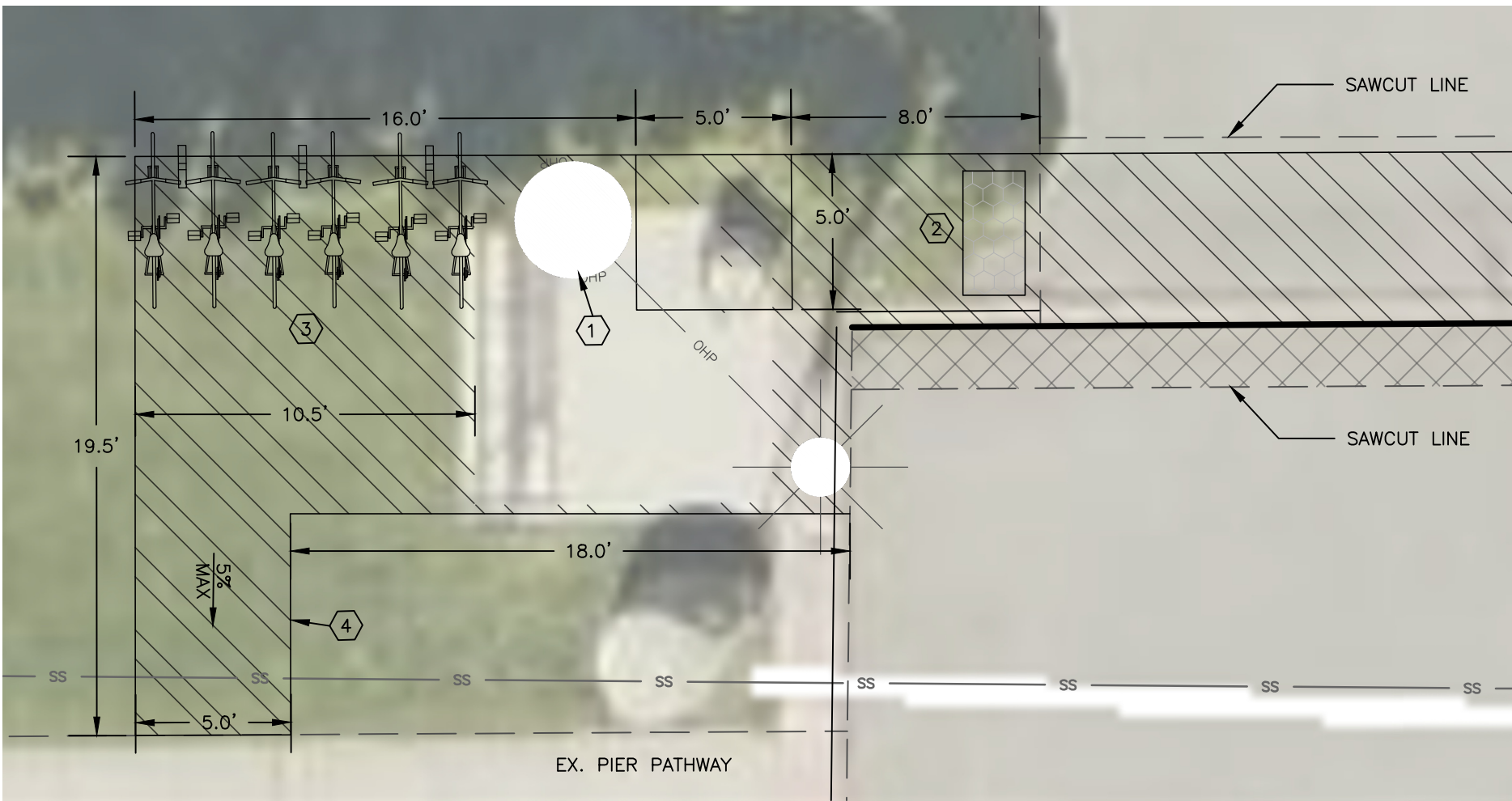
S THIRD AVE
STA:10+00.00 TO END



S THIRD AVE REFERENCE NOTES			
NUMBER	STATION	OFFSET	DESCRIPTION
①	10+00	17.5'L	SEE PIER SIDEWALK ENLARGED DETAIL, THIS SHEET.
②	10+06–10+26	17.5'L	REMOVE ALL ASPHALT AND CONCRETE CURB BETWEEN SAWCUT LINES. CONSTRUCT 20 LF CONCRETE SIDEWALK ACROSS DRIVEWAY, 5 FT WIDE AND 6" THICK. MATCH TOP BACK OF WALK TO ASPHALT ELEVATION. 1.5% MAX SIDEWALK CROSS SLOPE.
③	10+26	17.5'L	CONSTRUCT (1) PEDESTRIAN RAMP (TYPE C3, ISPMC SD–712D) W/ DETECTABLE WARNING STRIP SAWCUT ASPHALT; REMOVE AND RECONSTRUCT 15 LF OF 6" VERTICAL CURB (NO GUTTER) AND ASPHALT.
④	10+40	21.5'L	CONSTRUCT TAPER TO SEPARATE SIDEWALK 4.0 FT FROM CURB. 10 LF OF 5 FT WIDE SIDEWALK. COORDINATE WITH CITY FOR RELOCATION OF ELECTRICAL BOX (STA: 10+31) RETAIN AND PROTECT WATER METER (STA: 10+50)
⑤	10+50–10+70	21.5'L	NO EXISTING SIDEWALK CONSTRUCT 20 LF OF 5 FT WIDE SIDEWALK.
⑥	10+70–10+82	21.5'L	CONSTRUCT 12 LF OF 5 FT WIDE AND 6" THICK SIDEWALK ACROSS EXISTING GRAVEL DRIVEWAY. MATCH TOP BACK OF SIDEWALK TO EXISTING GRAVEL ELEVATION. 1.5% MAX SIDEWALK CROSS SLOPE. PLACE AND COMPACT GRAVEL (3"–) TO CREATE A CONTINUOUS GRADE FROM TOP FACE OF SIDEWALK TO 3RD AVE FLOW LINE.
⑦	10+82–11+70	21.5'L	NO EXISTING SIDEWALK CONSTRUCT 88 LF OF 5 FT WIDE SIDEWALK RECONSTRUCT WALKWAY TO 606 3RD AVE TO HAVE 1.5% MAX CROSS SLOPE RETAIN AND PROTECT EX. IRRIGATION BOX STA: 11+21. CONTRACTOR TO COORDINATE WITH CITY FOR RELOCATION/REPLACEMENT OF WATER METER STA: 11+26
⑧	12+30	17.5'L	SEE PACIFIC ST AND 3RD AVE ENLARGED INTERSECTION DETAIL, SHEET C4.0
NOTE: 1. PROTECT AND RETAIN EXISTING CURB TO THE GREATEST EXTENT FEASIBLE UNLESS NOTED OTHERWISE. 2. CONTRACTOR SHALL CONTACT THE CITY FOR A FORMING INSPECTION PRIOR TO PLACING CONCRETE. ADA TOLERANCES SHALL NOT BE EXCEEDED. 3. REFER TO SHEET C4.1 FOR HMA ROADWAY PATCHING DETAIL. 4. REFER TO SHEET C4.1 FOR CITY OF SANDPOINT STANDARD APPROACH DETAIL. 5. REFER TO ISPMC DWG NO SD–701 & 701A FOR 6" CURB & 6" CURB AND GUTTER DETAILS. 6. REFER TO ISPMC DWG NO SD–709 FOR CONCRETE SIDEWALK DETAIL. 7. REFER TO SHEET C4.2 FOR DIVERSION AND RAMPING AT TREES DETAILS. 8. REFER TO ISPMC SECTION 2030 FOR ALL UTILITY ADJUSTMENTS.			

EROSION CONTROL REFERENCE NOTES			
NUMBER	STATION	OFFSET	DESCRIPTION
①	12+36	18.0'L	STORM DRAIN INLET
NOTES: 1. SEE INLET PROTECTION DETAIL, SHEET C4.1.			

LEGEND	
	SIDEWALK CONSTRUCTION
	CURB CONSTRUCTION
	PLANT MIX PAVEMENT

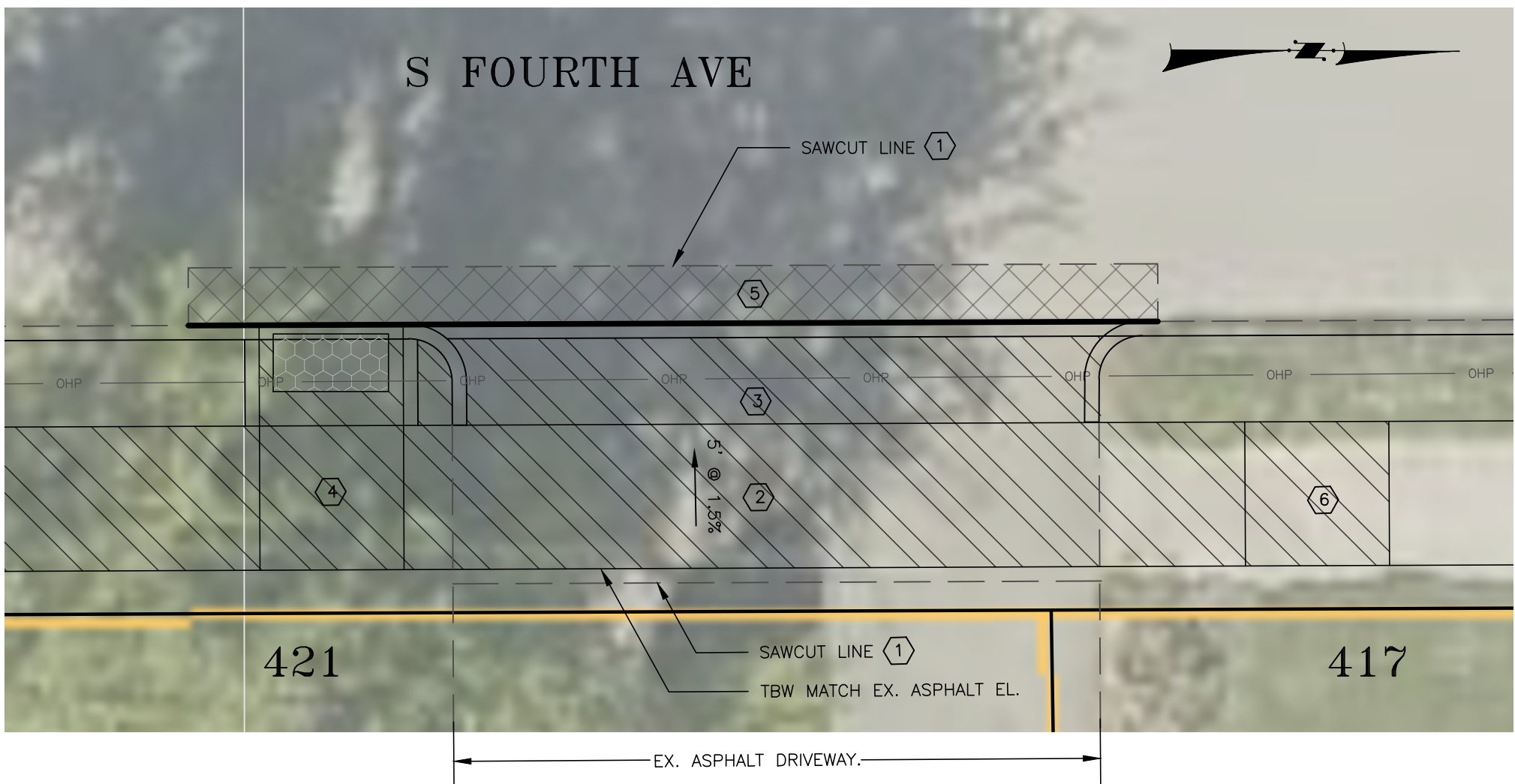


PIER SIDEWALK
S THIRD AVE
SCALE 1"=5'

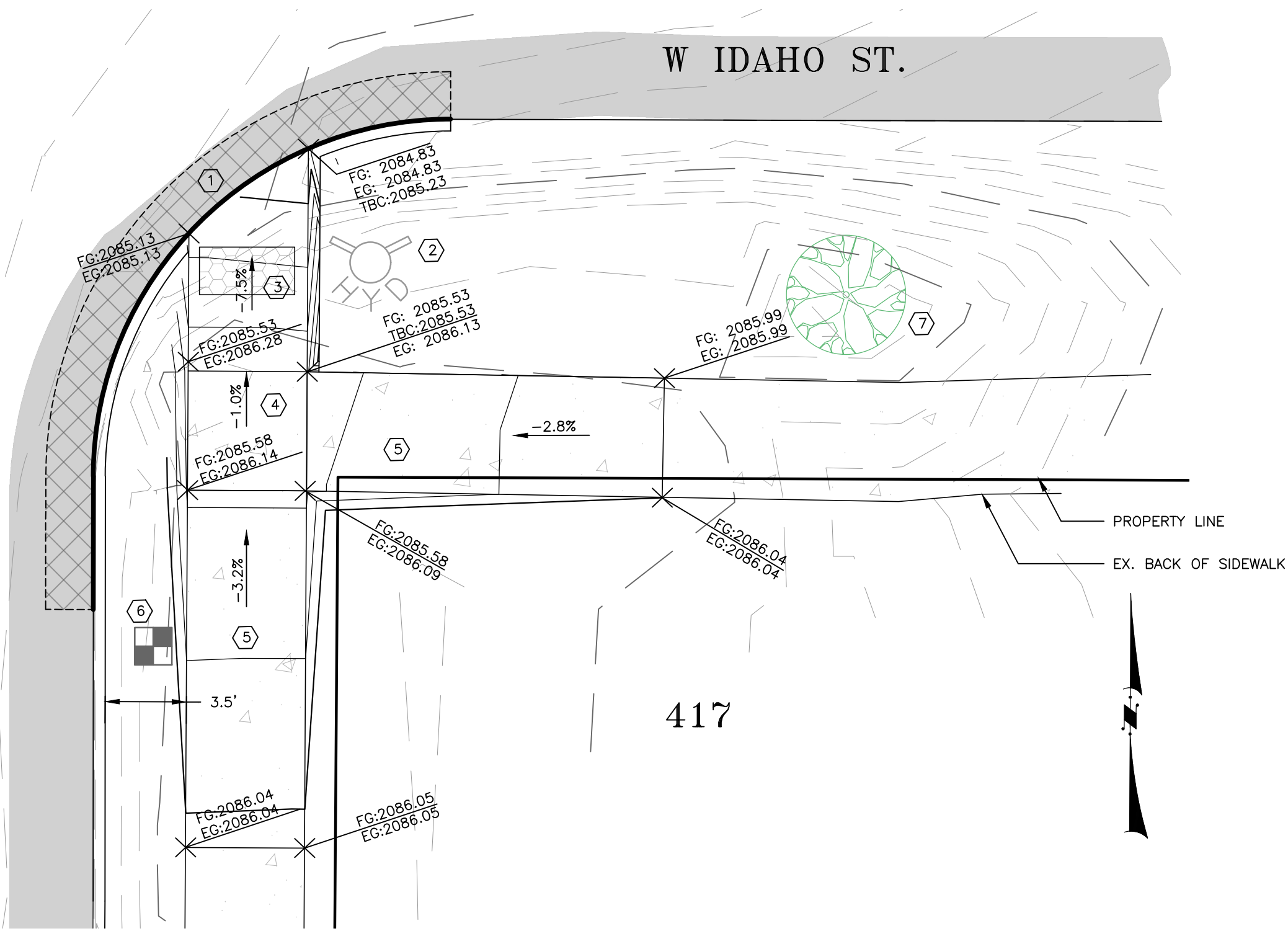
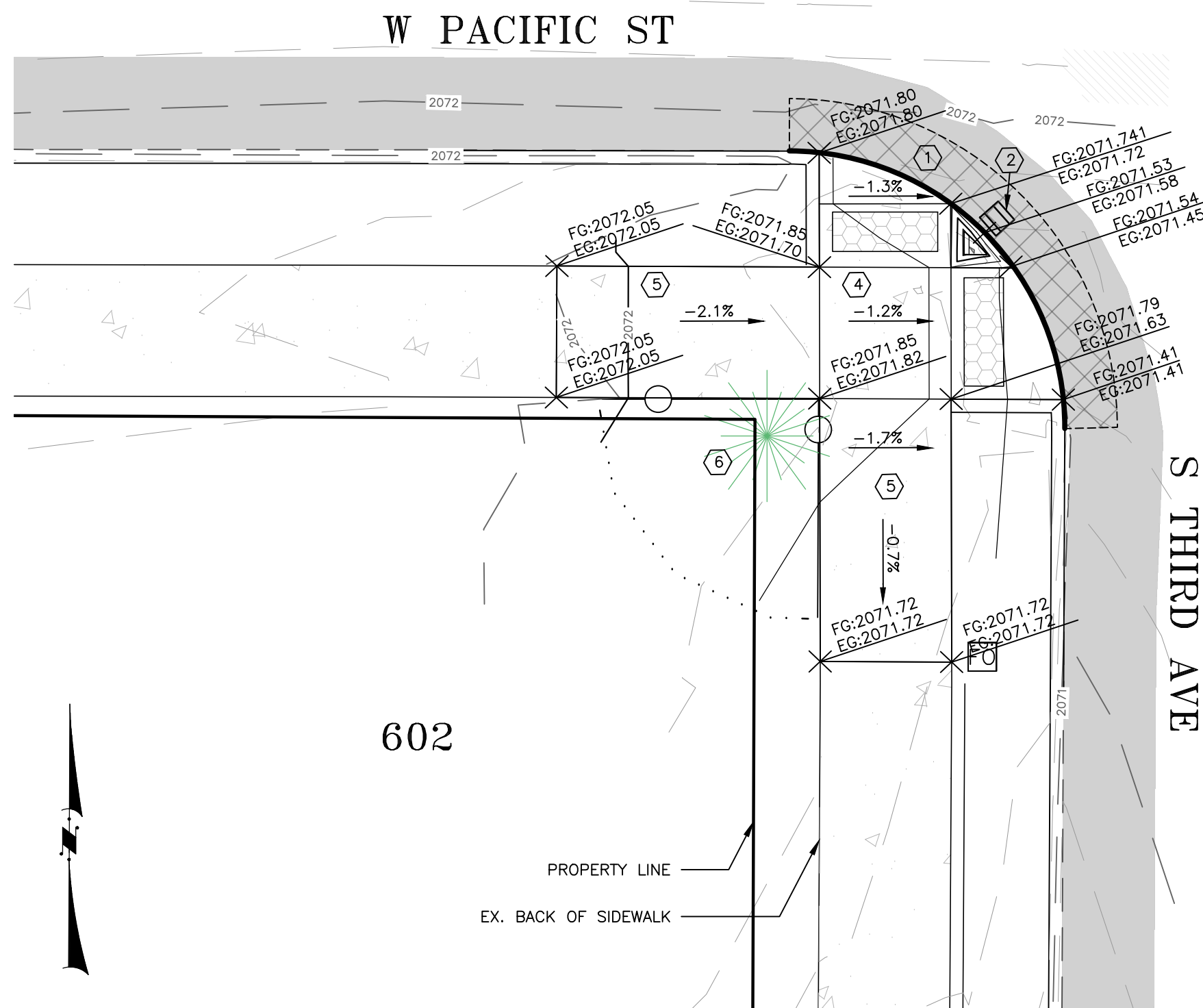
REFERENCE NOTES	
①	RELOCATE STREET LIGHT. CONTRACTOR TO COORDINATE WITH AVISTA.
②	CONSTRUCT (1) PEDESTRIAN RAMP (TYPE C3, ISPMC SD–712D) W/ DETECTABLE WARNING STRIP SAWCUT ASPHALT; REMOVE AND RECONSTRUCT 15 LF OF 6" VERTICAL CURB (NO GUTTER) AND ASPHALT.
③	EXPAND EXISTING CONCRETE PAD TO 5.0' WEST OF TBC AND 10.5' SOUTH OF EXISTING PAD. RELOCATE BIKE RACK AS SHOWN.
④	CONSTRUCT 5' WIDE SIDEWALK WITH 5% MAX RUNNING SLOPE FROM CONCRETE PAD TO PIER PATHWAY.

REVISIONS		BY
NO.	DATE	DESCRIPTION

DATE: 08/24/2025	PROJECT: #25-025
DRAWN: SRP	CHECKED: MHI
PATH: I:\PROJECTS\2025\25-0250 - SANDPOINT SIDEWALK\DRAWINGS	

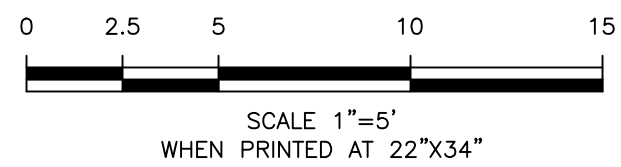


ENLARGED DETAIL - 421 S FOURTH AVE	
REFERENCE NOTES	
NUMBER	DESCRIPTION
①	REMOVE ALL ASPHALT AND CONCRETE CURB BETWEEN SAWCUT LINES.
②	CONSTRUCT CONCRETE SIDEWALK ACROSS DRIVEWAY, 5 FT WIDE AND 6" THICK. MATCH TOP BACK OF WALK TO EX. ASPHALT ELEVATION. 1.5% MAX SIDEWALK CROSS SLOPE.
③	CONSTRUCT CONCRETE APPROACH APRON. MATCH ELEVATION AT FACE OF SIDEWALK AND FOURTH AVE FLOW LINE. USE TYPE A CURB ON NORTH AND SOUTH SIDES OF DRIVEWAY FOR 0.0' TO FULL CURB HEIGHT REVEAL. 1.5'± TBC RADIUS.
④	5' X 5' ADA LANDING 1.5% MAX SLOPE IN ANY DIRECTION 5'W X 3.5'L ADA RAMP W/ DETECABLE WARNING STRIP 8.3% MAX SLOPE 0.0' TO FULL CURB HEIGHT REVEAL ON NORTH AND SOUTH SIDES.
⑤	RECONSTRUCT ASPHALT IN 4TH AVE.
⑥	REMOVE EXISTING SIDEWALK STEP AND TWO (2) NEAREST SIDEWALK PANELS. CONSTRUCT 10 LF OF 5.0% MAX SLOPE SIDEWALK FROM DRIVEWAY ELEVATION TO EX. SIDEWALK ELEVATION.
NOTE: 1. PROTECT AND RETAIN EXISTING CURB TO THE GREATEST EXTENT FEASIBLE UNLESS NOTED OTHERWISE. 2. CONTRACTOR SHALL CONTACT THE CITY FOR A FORMING INSPECTION PRIOR TO PLACING CONCRETE. ADA TOLERANCES SHALL NOT BE EXCEEDED. 3. REFER TO SHEET C4.1 FOR HMA ROADWAY PATCHING DETAIL. 4. REFER TO SHEET C4.1 FOR CITY OF SANDPOINT STANDARD APPROACH DETAIL. 5. REFER TO ISPMC DWG NO SD-701 & 701A FOR 6" CURB & 6" CURB AND GUTTER DETAILS. 6. REFER TO ISPMC DWG NO SD-709 FOR CONCRETE SIDEWALK DETAIL. 7. REFER TO SHEET C4.2 FOR DIVERSION AND RAMPING AT TREES DETAILS. 8. REFER TO ISPMC SECTION 2030 FOR ALL UTILITY ADJUSTMENTS.	



ENLARGED DETAIL - 417 S FOURTH AVE	
REFERENCE NOTES	
NUMBER	DESCRIPTION
①	REMOVE ALL ASPHALT AND CONCRETE CURB BEHIND SAWCUT LINE. REMOVE ALL EXISTING SIDEWALK WITH LIMITS OF DISTURBANCE.
②	RETAIN AND PROTECT EXISTING FIRE HYDRANT
③	CONSTRUCT (1) PEDESTRIAN RAMP (TYPE "C1", ISPMC SD-712D) W/ DETECABLE WARNING STRIP 8.3% MAX SLOPE FOR GRADING AND SPOT ELEVATIONS SEE THIS SHEET.
④	5' X 5' ADA LANDING 1.0% SLOPE IN ANY DIRECTION
⑤	CONSTRUCT 15LF OF 5' WIDE SIDEWALK TO THE SOUTH AND EAST OF LANDING.
⑥	COORDINATE ADJUSTMENT OF WATER METER BOX WITH CITY. REESTABLISH LAWN AND IRRIGATION SYSTEM TO PRE-CONSTRUCTION CONDITIONS OR BETTER.
⑦	EX TREE - RETAIN AND PROTECT.
NOTE: 1. PROTECT AND RETAIN EXISTING CURB TO THE GREATEST EXTENT FEASIBLE UNLESS NOTED OTHERWISE. 2. CONTRACTOR SHALL CONTACT THE CITY FOR A FORMING INSPECTION PRIOR TO PLACING CONCRETE. ADA TOLERANCES SHALL NOT BE EXCEEDED. 3. REFER TO SHEET C4.1 FOR HMA ROADWAY PATCHING DETAIL. 4. REFER TO SHEET C4.1 FOR CITY OF SANDPOINT STANDARD APPROACH DETAIL. 5. REFER TO ISPMC DWG NO SD-701 & 701A FOR 6" CURB & 6" CURB AND GUTTER DETAILS. 6. REFER TO ISPMC DWG NO SD-709 FOR CONCRETE SIDEWALK DETAIL. 7. REFER TO SHEET C4.2 FOR DIVERSION AND RAMPING AT TREES DETAILS. 8. REFER TO ISPMC SECTION 2030 FOR ALL UTILITY ADJUSTMENTS.	

ENLARGED DETAIL - 602 S 3RD AVE	
REFERENCE NOTES	
NUMBER	DESCRIPTION
①	REMOVE ALL ASPHALT AND CONCRETE CURB BEHIND SAWCUT LINE. REMOVE ALL EXISTING SIDEWALK WITHIN LIMITS OF DISTURBANCE.
②	RETAIN AND PROTECT EXISTING CATCH BASIN. INSTALL INLET PROTECTION, PER DETAIL SHEET C4.1.
③	CONSTRUCT (2) PEDESTRIAN RAMP (TYPE "F1", ISPMC SD-712E) W/ DETECABLE WARNING STRIPS
④	5' X 5' ADA LANDING 1.2% SLOPE TOWARDS S 3RD AVE.
⑤	CONSTRUCT 10 LF OF 5FT WIDE SIDEWALK TO THE SOUTH AND WEST OF THE LANDING
⑥	RETAIN AND PROTECT EXISTING FENCE AND LANDSCAPING TO THE GREATEST EXTENT POSSIBLE. ALL DISTURBED AREA SHALL BE RETURNED TO PRE-CONSTRUCTION CONDITION OR BETTER.
NOTE: 1. PROTECT AND RETAIN EXISTING CURB TO THE GREATEST EXTENT FEASIBLE UNLESS NOTED OTHERWISE. 2. CONTRACTOR SHALL CONTACT THE CITY FOR A FORMING INSPECTION PRIOR TO PLACING CONCRETE. ADA TOLERANCES SHALL NOT BE EXCEEDED. 3. REFER TO SHEET C4.1 FOR HMA ROADWAY PATCHING DETAIL. 4. REFER TO SHEET C4.1 FOR CITY OF SANDPOINT STANDARD APPROACH DETAIL. 5. REFER TO ISPMC DWG NO SD-701 & 701A FOR 6" CURB & 6" CURB AND GUTTER DETAILS. 6. REFER TO ISPMC DWG NO SD-709 FOR CONCRETE SIDEWALK DETAIL. 7. REFER TO SHEET C4.2 FOR DIVERSION AND RAMPING AT TREES DETAILS. 8. REFER TO ISPMC SECTION 2030 FOR ALL UTILITY ADJUSTMENTS.	

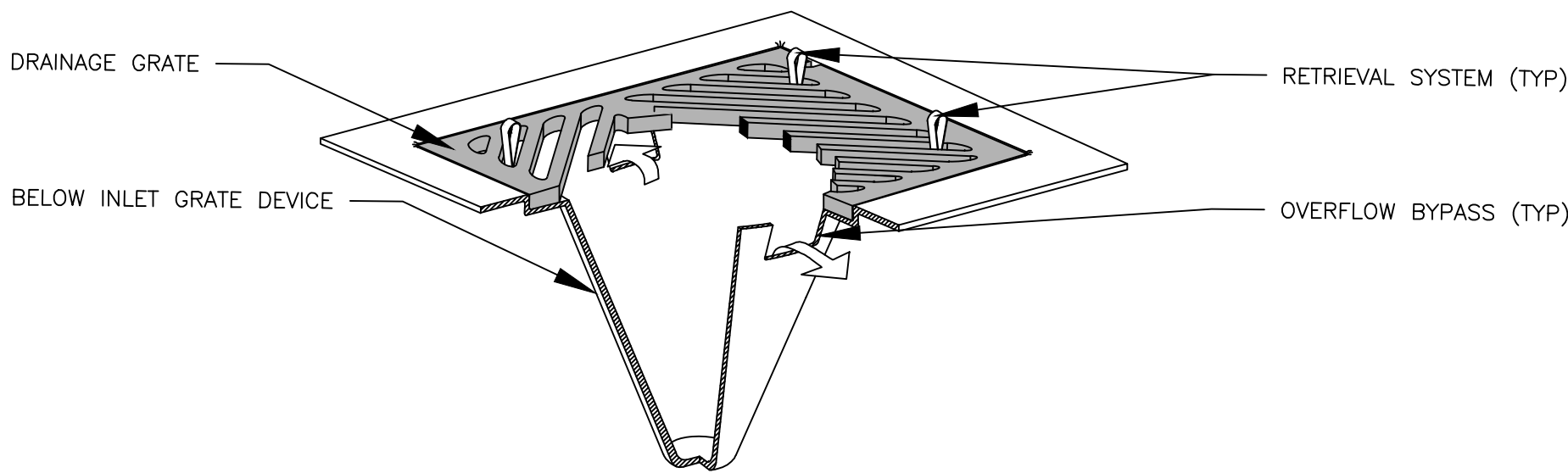


REVISIONS		BY
NO.	DATE	DESCRIPTION

DATE: 08/01/2025	PROJECT: #25-025	PARCEL: N/A	DRAWN: SRP	CHECKED: MHI	DATE: 08/01/2025	PROJECT: #25-025	PARCEL: N/A	DRAWN: SRP	CHECKED: MHI
------------------	------------------	-------------	------------	--------------	------------------	------------------	-------------	------------	--------------

NOTES:

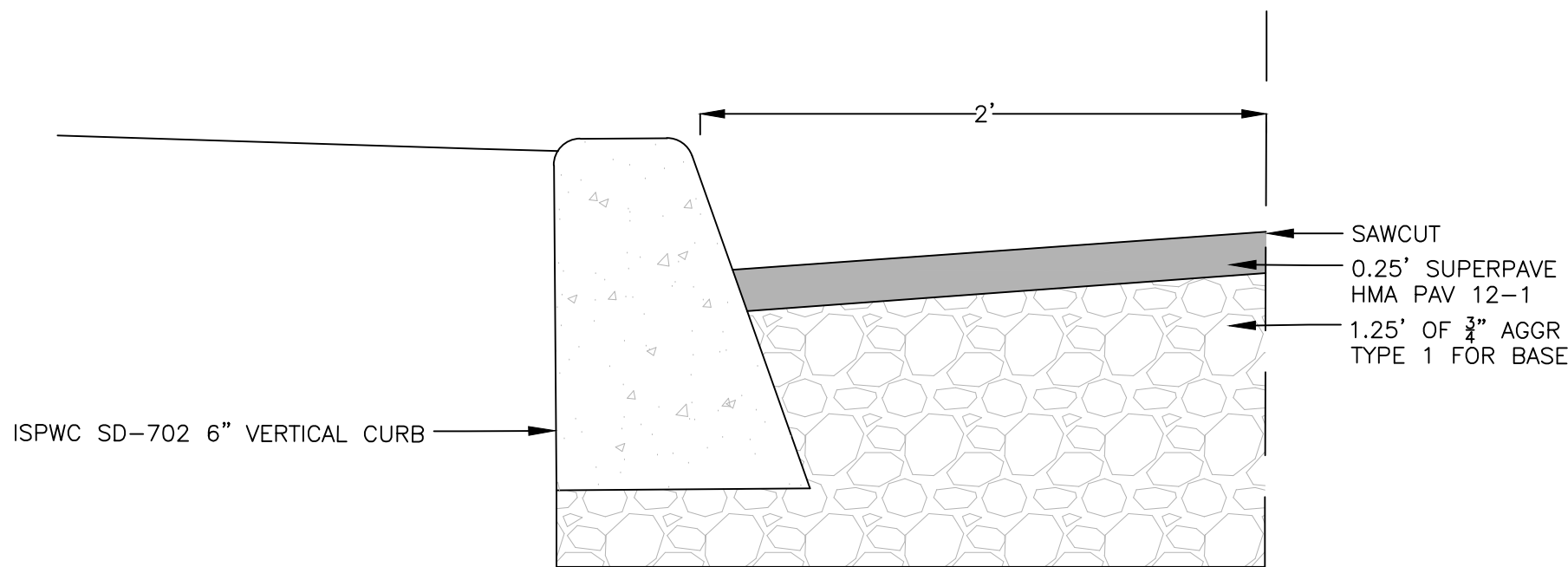
1. PLACE FILTER FABRIC BELOW THE GRATE WITH 0.5' MINIMUM TUCKED AROUND THE GRATE SIDES TO ENSURE THAT THE FILTER IS SECURE.
2. SIZE THE BELOW INLET GRATE DEVICE (BIGD) FOR THE STORM WATER STRUCTURE IT WILL SERVICE.
3. THE BIGD SHALL HAVE A BUILT-IN HIGH-FLOW RELIEF SYSTEM (OVERFLOW BYPASS).
4. THE RETRIEVAL SYSTEM MUST ALLOW REMOVAL OF THE BIGD WITHOUT SPILLING THE COLLECTED MATERIAL.



BELOW INLET GRATE DEVICE

INLET PROTECTION DETAIL

N.T.S.

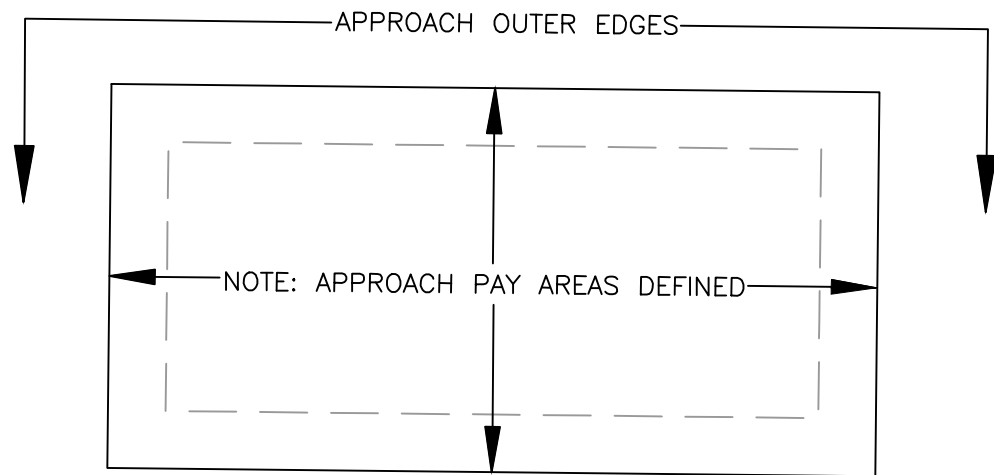


NOTE:

1. REFER TO ISPMC DWG NO. SD-303 FOR FURTHER DETAIL.

HMA ROADWAY PATCHING

N.T.S.

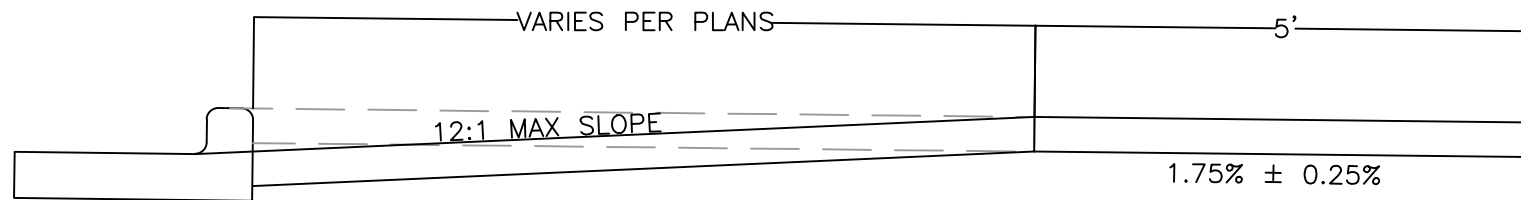


(SEE NOTE 7)

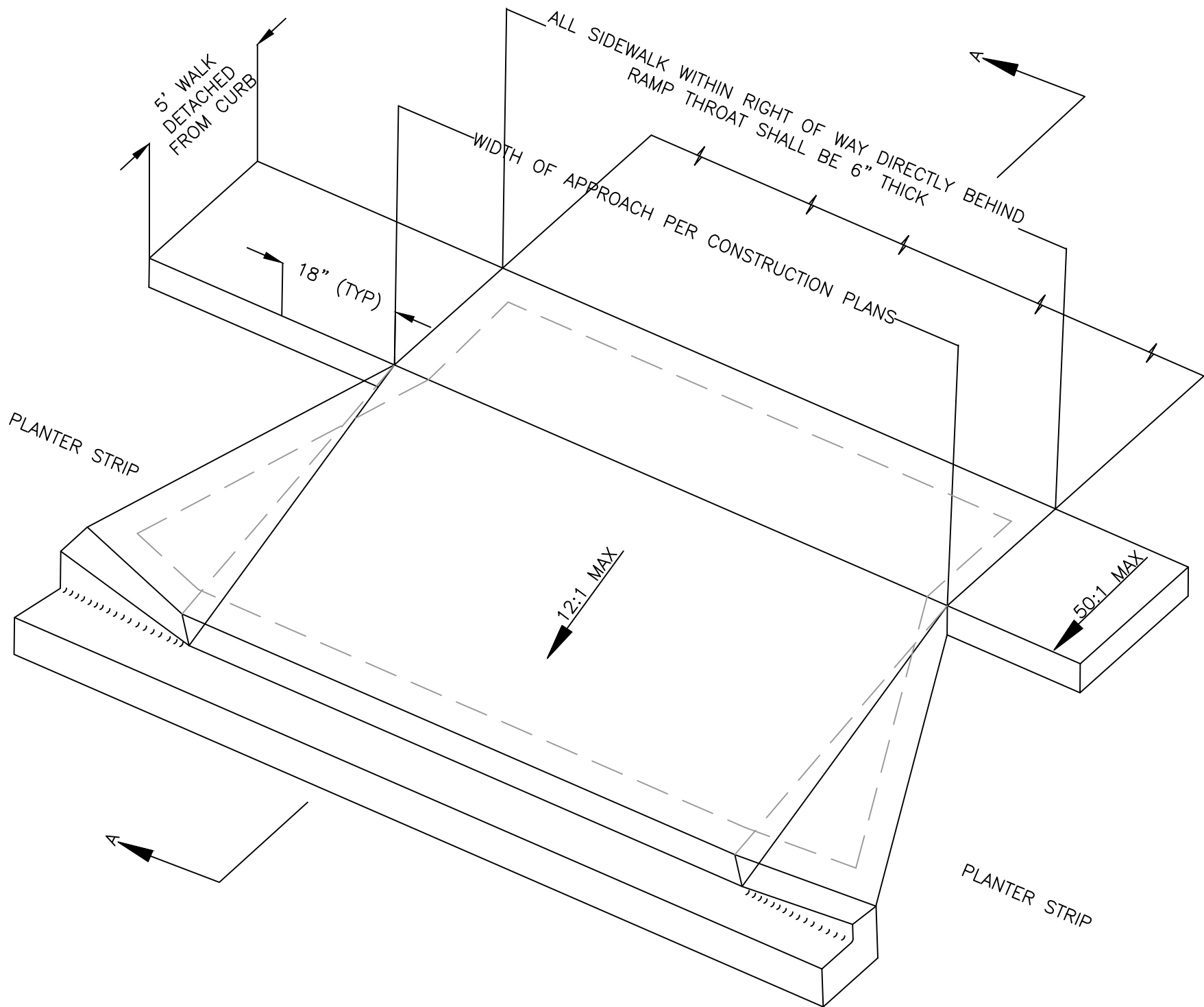
PAY QUANTITY DETAIL

NOTES:

1. APPROACH TO CONFORM THE THE LATEST ADA STANDARDS.
2. INSTALL EXPANSION JOINT AT TIP OF APPROACH WINGS AND WHERE SIDEWALK CHANGES THICKNESS.
3. BASE TO BE A 4" THICKNESS OF 3/4" MINUS CRUSHED AGGREGATE.
4. APPROACH THROAT WIDTHS TO MATCH EXISTING UNLESS NOTED OTHERWISE ON THESE PLANS. ALL CONCRETE TO BE 6" THICK FROM TIP OF WING TO TIP OF WING UP UP TO THE EXPANSION JOINT. WHEN SIDEWALK IS SEPARATE FROM CURB THE SIDEWALK IMMEDIATELY BEHIND THE APPROACH THROAT SHALL BE 6" THICK.
5. ALL CONCRETE SHALL BE CLASS 3000.
6. SIDEWALK WIDTH MAY VARY.
7. PAY QUANTITIES FOR URBAN APPROACHES SHALL INCLUDE THE APPROACH RAMP/DRIVEWAY AREA, THE APPROACH FLARES/WINGS AND SIDEWALK DIRECTLY BEHIND RAMP THROAT.
8. 3/4" REBAR @ 18" O.C. BOTH WAYS IN 6" APRON AND WALK IS REQUIRED, OR EQUIVALENT AS DETERMINED BY CITY.

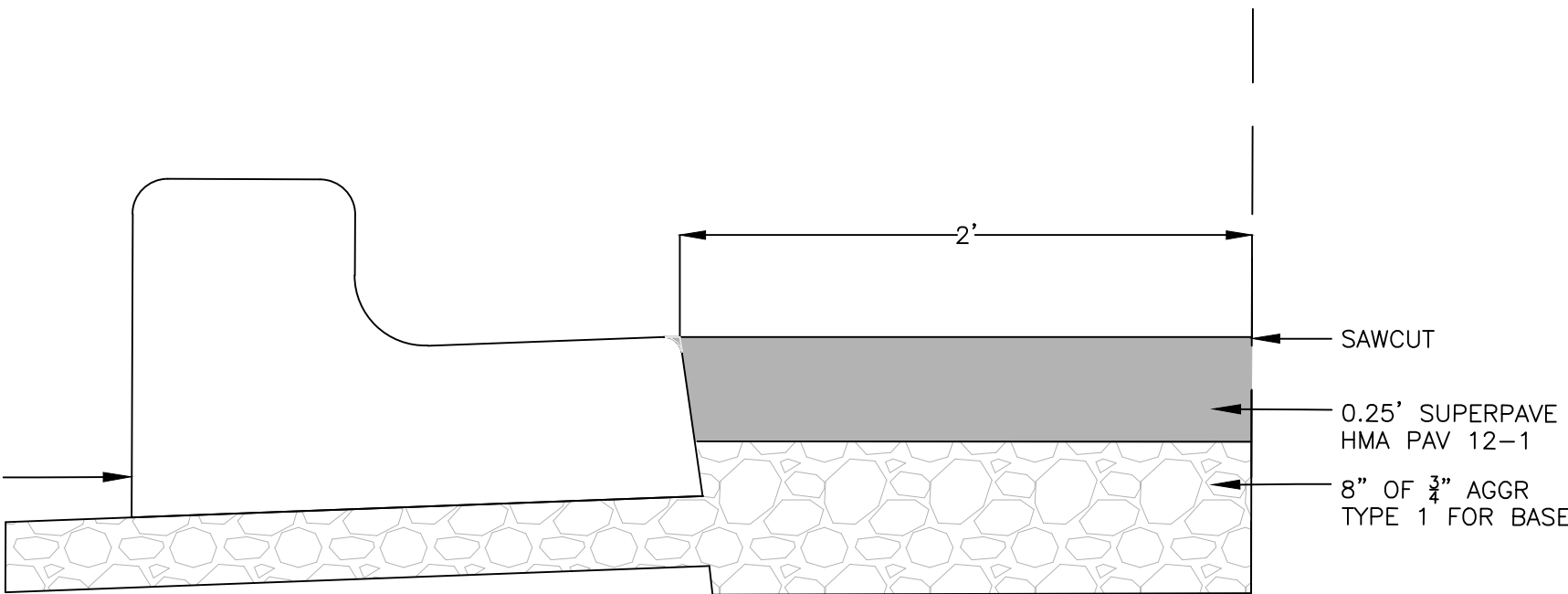


SECTION A-A



CITY OF SANDPOINT STANDARD APPROACH

N.T.S.



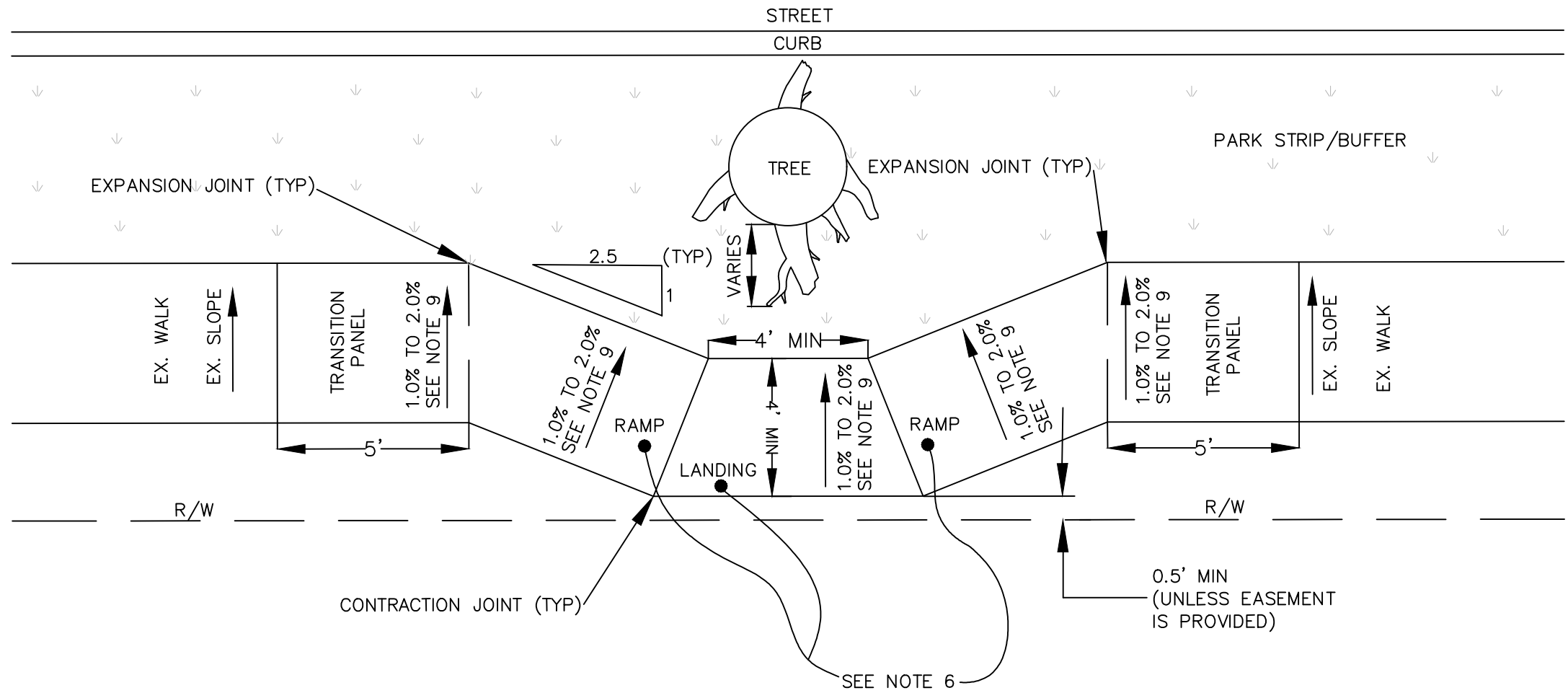
REVISIONS			
NO.	DATE	DESCRIPTION	BY

DATE: 08/24/2025	PROJECT: #25-025
PARCEL: N/A	DRAWN: SRP
CHECKED: MHI	PATH: I:\PROJECTS\2025\25-0250 - SANDPOINT SIDEWALK PRODUCTION
2025\DESIGN\DWG\CIVIL\DRAWINGS	





Know what's below.
Call before you dig.

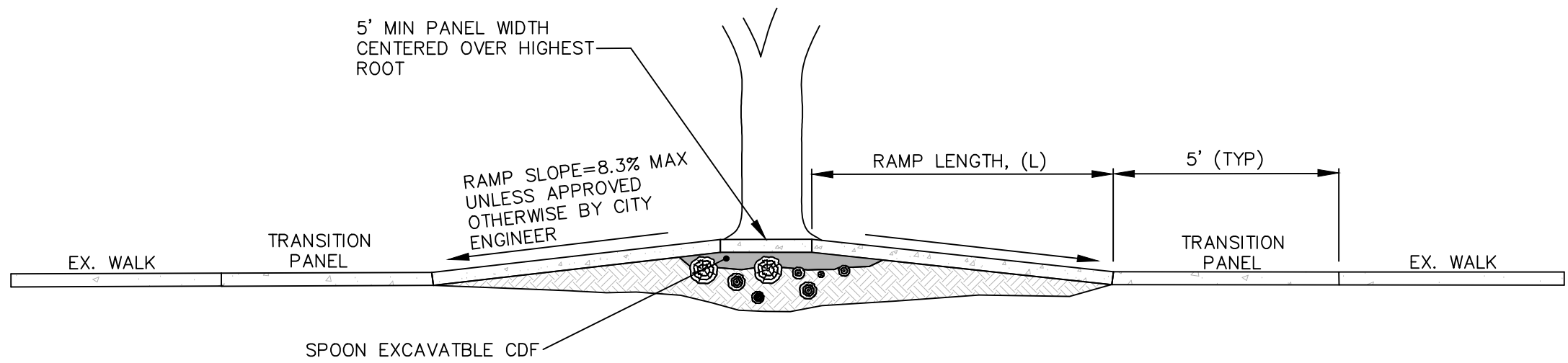


SIDEWALK REPAIR DIVERSION AT TREES

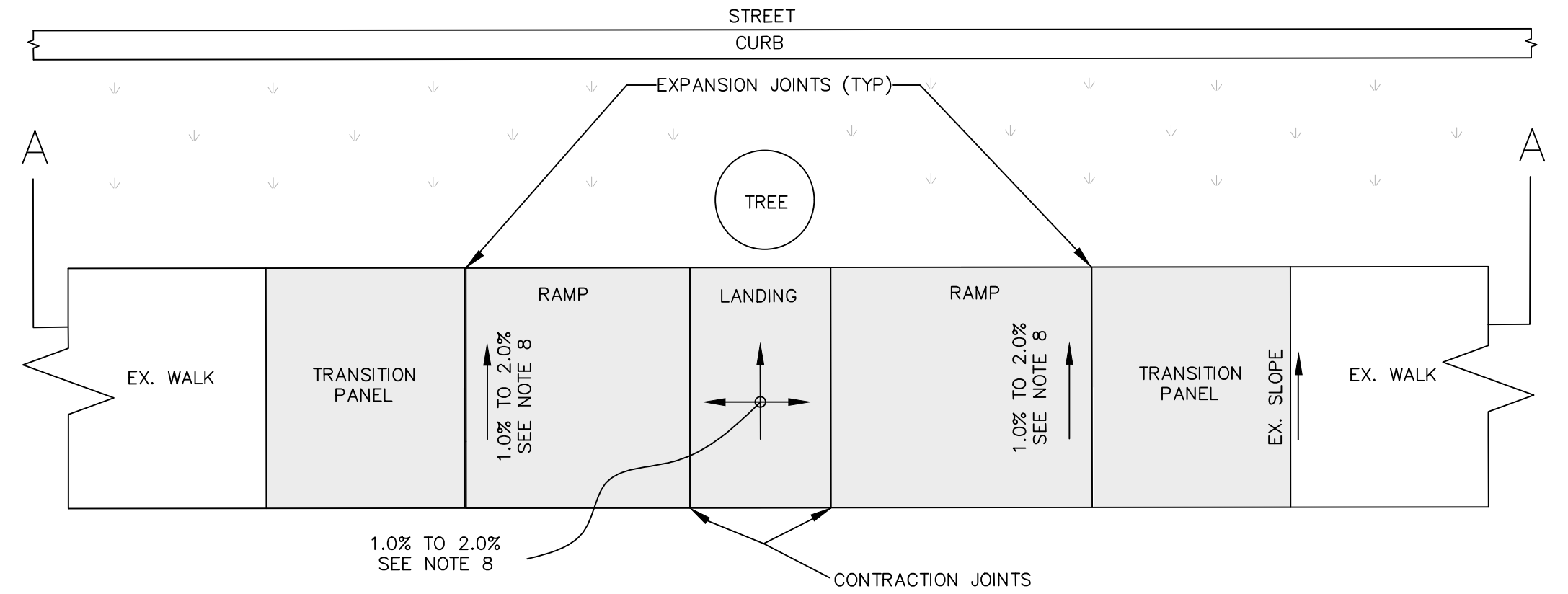
N.T.S.

NOTES:

1. THIS PLAN DOES NOTE APPLY FOR A NEW SIDEWALK CONSTRUCTION IN UNDEVELOPED AREAS.
2. 5' TRANSITION PANELS ARE REQUIRED WHEN CROSS SLOPE OF ADJACENT EXISTING WALK EXCEEDS 2.0%.
3. ROOT AREAS SHALL BE UNDISTURBED AS MUCH AS PRACTICAL. LOOSE SOIL SHALL BE LIGHTLY HAND TAMPED, IF ROOT TRIMMING IS NECESSARY, CONTACT THE CITY URBAN FORESTRY DEPARTMENT.
4. TYPICAL SIDEWALK DIVERSION ANGLE SHALL BE 2.5 TO 1. THE DIVERSION ANGLE MAY BE INCREASED TO 1 TO 1 AS DIRECTED BY THE CITY.
5. BACK OF SIDEWALK SHALL BE A MINIMUM OF 0.5' INSIDE OF THE RIGHT-OF-WAY. SIDEWALK WIDTH MAY BE DECREASED TO 3' AS DIRECTED BY THE ENGINEER TO ENSURE SIDEWALK IS WITHIN THE RIGHT-OF-WAY.
6. USE IN CONJUNCTION WITH RAMPING DETAIL, THIS SHEET, WHEN RAMPING OVER AND DIVERTING AROUND TREE ROOTS IS REQUIRED.
7. PLACE TOPSOIL AND HYDROSEED OR SOD AS DIRECTED BY THE CITY.
8. RELOCATE OR REPLACE EXISTING SPRINKLER SYSTEMS AS NEEDED.
9. 1.0% MINIMUM CROSS SLOPE AND 2.0 MAXIMUM CROSS SLOPE. NO ADDITIONAL CONSTRUCTION TOLERANCE IS ALLOWED.



SECTION A-A



PLAN VIEW

SIDEWALK REPAIR RAMPING AT TREES

N.T.S.

NOTES:

1. THIS PLAN DOES NOTE APPLY FOR A NEW SIDEWALK CONSTRUCTION IN UNDEVELOPED AREAS.
2. A 5' TRANSITION PANEL IS REQUIRED WHEN CROSS SLOPE OF ADJACENT EXISTING WALK EXCEEDS 2.0%.
3. THE MAXIMUM RAMP RUNNING SLOPE SHALL NOTE REQUIRE THE RAMP LENGTH (L) TO EXCEED 15' TO AVOID CHASING THE SLOPE INDEFINITELY; INCREASE THE MAXIMUM RUNNING SLOPE AS DIRECTED BY THE ENGINEER. NO ADDITIONAL CONSTRUCTION TOLERANCE IS ALLOWED.
4. ROOTED AREAS SHALL BE UNDISTURBED AS MUCH AS PRACTICAL. LOOSE SOIL SHALL BE LIGHTLY HAND TAMPED, IF ROOT TRIMMING IS NECESSARY CONTACT THE CITY URBAN FORESTRY DEPARTMENT.
5. FILL VOIDS AROUND ROOTS TO PROVIDE SIDEWALK SUPPORT WITH LAYER OF SPOON EXCAVATABLE CONTROLLED DENSITY FILL (CDF). A 1" MINIMUM COVER OVER THE HIGHEST ROOT IS REQUIRED.
6. PLACE TOPSOIL AND HYDROSEED OR SOD AS DIRECTED BY THE CITY TO MATCH EXISTING CONDITIONS.
7. RAISE, RELOCATE, OR REPLACE EXISTING SPRINKLER SYSTEMS AS NEEDED.
8. 1.0% MINIMUM CROSS SLOPE AND 2.0 MAXIMUM CROSS SLOPE. NO ADDITIONAL CONSTRUCTION TOLERANCE IS ALLOWED.

REVISIONS			
NO.	DATE	DESCRIPTION	BY

DATE: 08/24/2025	PROJECT: #25-025	PARCEL: N/A	DRAWN: SRP	CHECKED: MHI	DATE: 08/24/2025	PROJECT: #25-025	PARCEL: N/A	DRAWN: SRP	CHECKED: MHI	DATE: 08/24/2025	PROJECT: #25-025	PARCEL: N/A	DRAWN: SRP	CHECKED: MHI	DATE: 08/24/2025	PROJECT: #25-025	PARCEL: N/A	DRAWN: SRP	CHECKED: MHI
------------------	------------------	-------------	------------	--------------	------------------	------------------	-------------	------------	--------------	------------------	------------------	-------------	------------	--------------	------------------	------------------	-------------	------------	--------------