



NO.	REVISION	BY	DATE

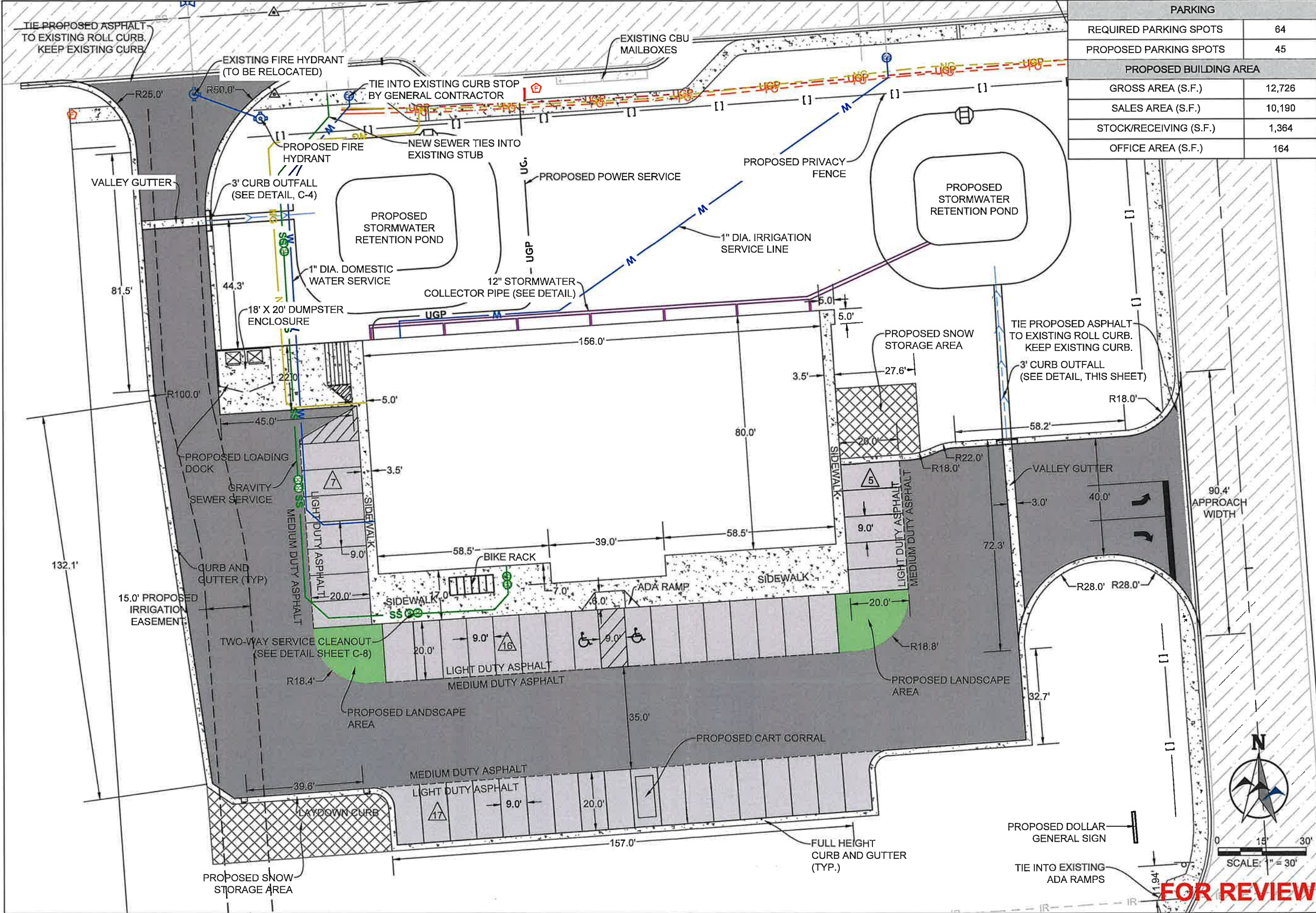
PREPARED BY
WWC ENGINEERING
 1275 MAPLE STREET, SUITE F
 HELENA, MT 59601
 (406) 443-3982
 www.wwceengineering.com

CAPITAL GROWTH BUCHALTER
SIDNEY DOLLAR GENERAL STORE #25534
NEIGHBORING PROPERTY OWNERS
 RICHLAND COUNTY, MONTANA

DESIGNED BY: SLK
 DRAWN BY: SLK
 CHECKED BY: SLK
 DATE: 9/5/2023
 SHEET
1



K:\Helm\CAPITAL GROWTH BUCHALTER\2022534 Sidney Site Development\05\CAD\Sheets\CIVIL DESIGN\2534-SITE-PLAN-1\17.dwg 11x17 SITE PAVING 09/12/2023 9:14:51 AM



PARKING	
REQUIRED PARKING SPOTS	64
PROPOSED PARKING SPOTS	45
PROPOSED BUILDING AREA	
GROSS AREA (S.F.)	12,726
SALES AREA (S.F.)	10,190
STOCK/RECEIVING (S.F.)	1,364
OFFICE AREA (S.F.)	164

NO.	REVISION	BY	DATE

PREPARED BY
WWC ENGINEERING
 1275 MAPLE STREET, SUITE F
 HELENA, MT 59601
 (406) 443-8962
 www.wwcengineering.com

CAPITAL GROWTH BUCHALTER
SIDNEY DOLLAR GENERAL STORE #25534
SITE PLAN
 RICHLAND COUNTY, MONTANA

DESIGNED BY: *BJD*
 DRAWN BY: *BJD*
 CHECKED BY: *DDP*
 DATE: 8/29/2023

SHEET
1



FOR REVIEW