



January 5, 2026

To: Mineral lease owner within ¼ mile of the proposed saltwater disposal well.

RE: Proposed Saltwater Disposal Well

Location of proposed Disposal Well & Facility: Jaws SWD 1

Surface Hole Location: NE 1/4 SE 1/4, Section 5, Township 22N, Range 59E. P.M.M.

Bottom Hole Location: NE 1/4 SW 1/4, Section 4, Township 22N, Range 59E. P.M.M.

Richland County, Montana

This letter is to advise you that MorningStar Operating LLC (MorningStar) plans to drill and complete the subject well into a Class II saltwater disposal well. Water will be injected into the Dakota group for the purpose of disposal operations.

In accordance with the rules and regulations of the Montana Board of Oil & Gas Conservation (MBOG), MorningStar is required to give notice that it has made an application to perform this work to each mineral lease owner within a one-quarter mile radius of the injection site. The MBOG will conduct a hearing regarding this application. For the hearing date, please contact the MBOG by phone at (406) 656-0040, or visit their website at <https://dnrc.mt.gov/BOGC/>. Your comments or objections regarding this application may be directed to the MBOG at that time.

Written comments or objections may be submitted prior to the hearing to the following address:

Montana Board of Oil & Gas Conservation
2535 St. Johns Avenue
Billings, MT 59102

Please direct any and all of your communication regarding this proposed project, including more information about the upcoming hearing, to Mr. John Gizicki with the MBOG at (406) 656-0040 or to Dave Harford with MorningStar Operating LLC at (817) 334-7800.

Sincerely,

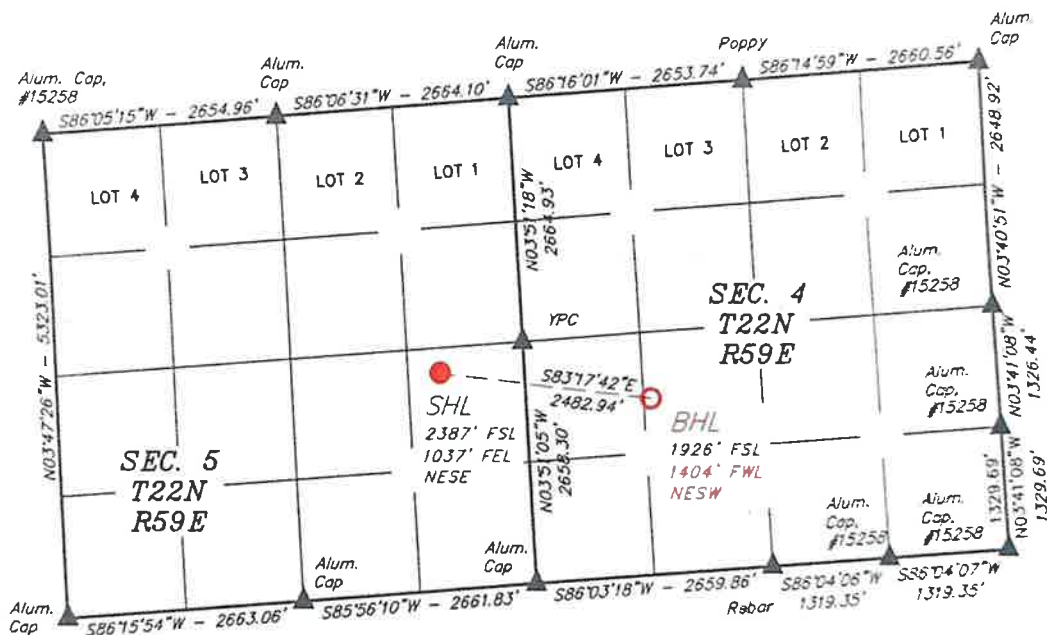
Amy Doebele

Authorized Agent for MorningStar Operating LLC

LEGEND:

- = SURFACE HOLE LOCATION
- = BOTTOM HOLE LOCATION
- ▲ = SECTION CORNERS LOCATED
- △ = SECTION CORNERS RE-ESTABLISHED (Not Set on Ground)

NOTE
Distances referenced on plat to section lines are perpendicular.



EXISTING GROUND ELEVATION = 1940.2'

NAD 83 (SURFACE HOLE LOCATION)	NAD 83 (BOTTOM HOLE LOCATION)
LATITUDE: 47 41 43.71" (47 695475)	LATITUDE: 47 41 39.20" (47 694221)
LONGITUDE: -104 10 03.23" (-104 167564)	LONGITUDE: -104 09 27.53" (-104 157649)
NAD 27 (SURFACE HOLE LOCATION)	NAD 27 (BOTTOM HOLE LOCATION)
LATITUDE: 47 41 43.68" (47 695488)	LATITUDE: 47 41 39.13" (47 694204)
LONGITUDE: -104 10 01.46" (-104 167021)	LONGITUDE: -104 09 25.76" (-104 157157)

BASIS OF BEARINGS

BASIS OF BEARINGS IS A GPS OBSERVATION



UELS, LLC
Corporate Office
85 South 200 East
Vernal, UT 84078
(435) 789-1017



CERTIFICATE
THIS IS TO CERTIFY THAT THE ABOVE PLAT WAS PREPARED FROM FIELD NOTES OF ACTUAL SURVEYS MADE BY ME OR UNDER MY SUPERVISION AND THAT THE SAME ARE TRUE AND CORRECT TO THE BEST OF MY KNOWLEDGE AND BELIEF.



Scott C. Koterba

SCOTT C. KOTERBA
REGISTERED LAND SURVEYOR
REGISTRATION NO. 10801LS
STATE OF MONTANA

MORNINGSTAR OPERATING LLC

JAWS SWD 1
NE 1/4 SE 1/4, SECTION 5, T22N, R59E, P.M.M.
RICHLAND COUNTY, MONTANA

SURVEYED BY	ES	11-21-25	SCALE
DRAWN BY	DJG	12-17-25	1" = 2000'
WELL LOCATION PLAT			