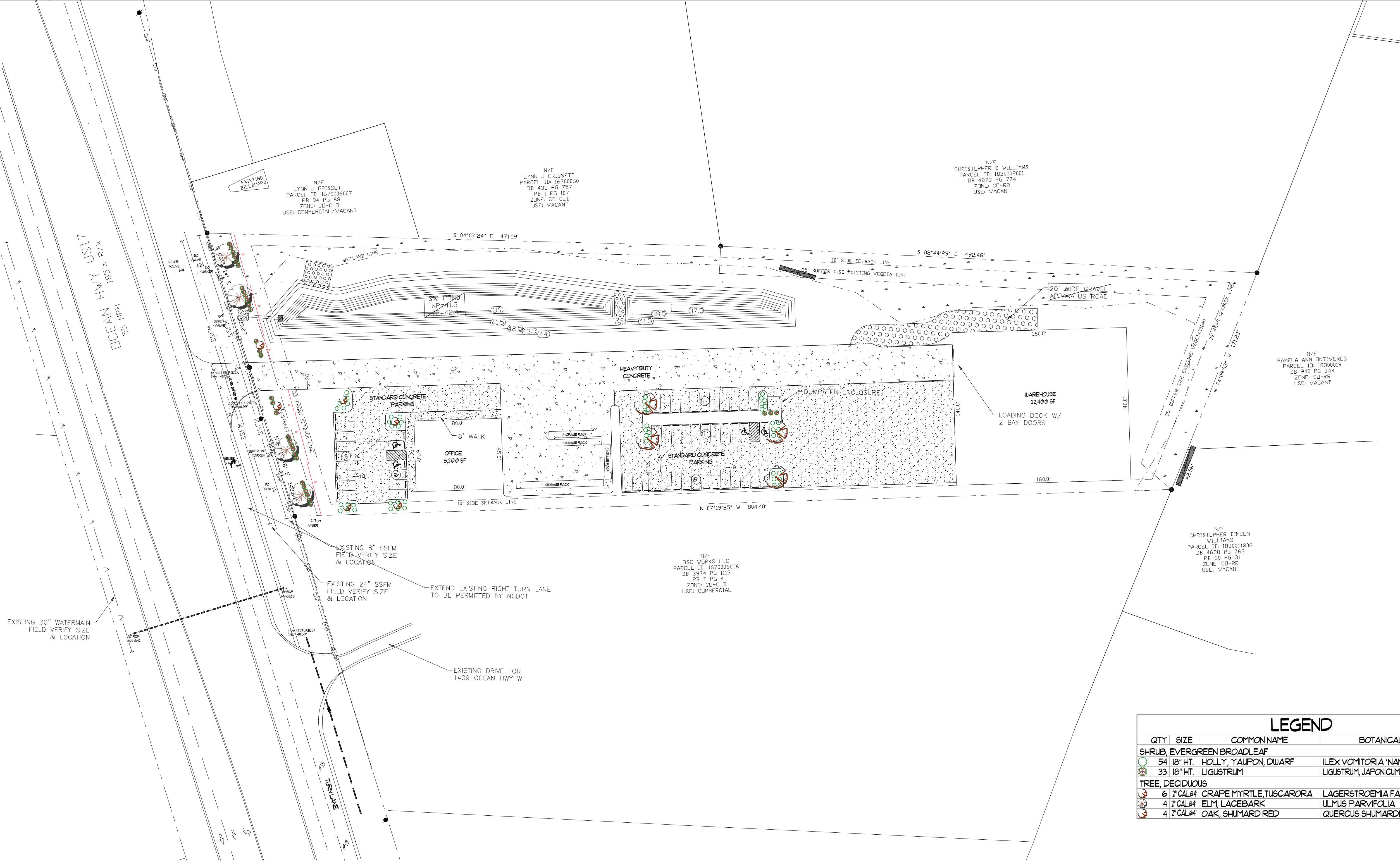
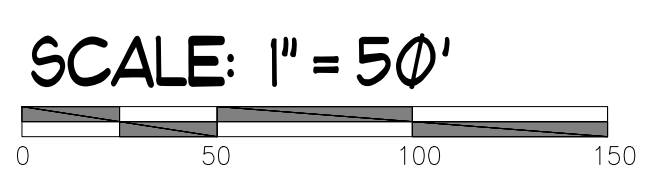


SITE DATA	
PARCEL NUMBER:	1670006004
ZONING:	SHALLOTTE: B-2
TOTAL SITE AREA:	205,625 SF / 4.71 AC
DISTURBED AREA:	182,209 SF / 4.18 AC
BUILDING USE:	BUILDING MATERIALS SALES & STORAGE
MAXIMUM BUILDING HEIGHT:	40'
STREET BUFFER:	20'
BUILDING SETBACKS:	
FRONT:	65'
REAR:	20'
SIDE:	10'
IMPERVIOUS AREAS:	
BUILDING:	27,800 SF
DRIVE ISLE / PARKING:	89,890 SF
WALKS / CONCRETE:	1,224 SF
GRAVEL:	8,000 SF
FUTURE:	2,000 SF
TOTAL IMPERVIOUS AREA:	108,914 SF / 2.58 AC
% IMPERVIOUS:	52.92%
PARKING REQUIRED:	52 SPACES (MIN) 77 SPACES (MAX)
BLDG MATERIALS SALES:	1/375 SF = 13.9
WAREHOUSE:	1/600 SF = 37.3
PARKING PROVIDED:	
SPACES PROVIDED:	48 SPACES
HANDICAP SPACES PROVIDED:	4 SPACES
TOTAL SPACES PROVIDED:	52 SPACES
LOADING SPACE (12'x55')	2



LEGEND			
QTY	SIZE	COMMON NAME	BOTANICAL NAME
SHRUB, EVERGREEN BROADLEAF			
54	18" HT.	HOLLY, YAUFON DWARF	ILEX VOMITORIA 'NANA'
33	18" HT.	LIGUSTRUM	LIGUSTRUM JAPONICUM RECURVAFOLIUM
TREE, DECIDUOUS			
6	2" CAL.#4	CRAPE MYRTLE, TUSCARORA	LAGERSTROEMIA FAUREI
4	2" CAL.#4	ELM, LACEBARK	ULMUS PARVIFOLIA
4	2" CAL.#4	OAK, SHUMARD RED	QUERCUS SHUMARDII



OWNER:
 S&H Investment Group, LLC
 2430 Wise Rd
 Conway, SC 29526
 843-365-0081
 hmetal@scoast.net
 sandys@hometoolmetalworks.com

HARDWICK OFFICE & YARD - SHALLOTTE
 1395 OCEAN HWY W, SUPPLY, NC 28462
 BRUNSWICK COUNTY, NORTH CAROLINA



Revision #:
 Date: 1/29/2025

Scale:
 1" = 50'

Landscape Plan:
 Hardwick Office

Landscape Design by: Jim Freeman - NCLC# 0071
 Freeman Landscape, Inc.