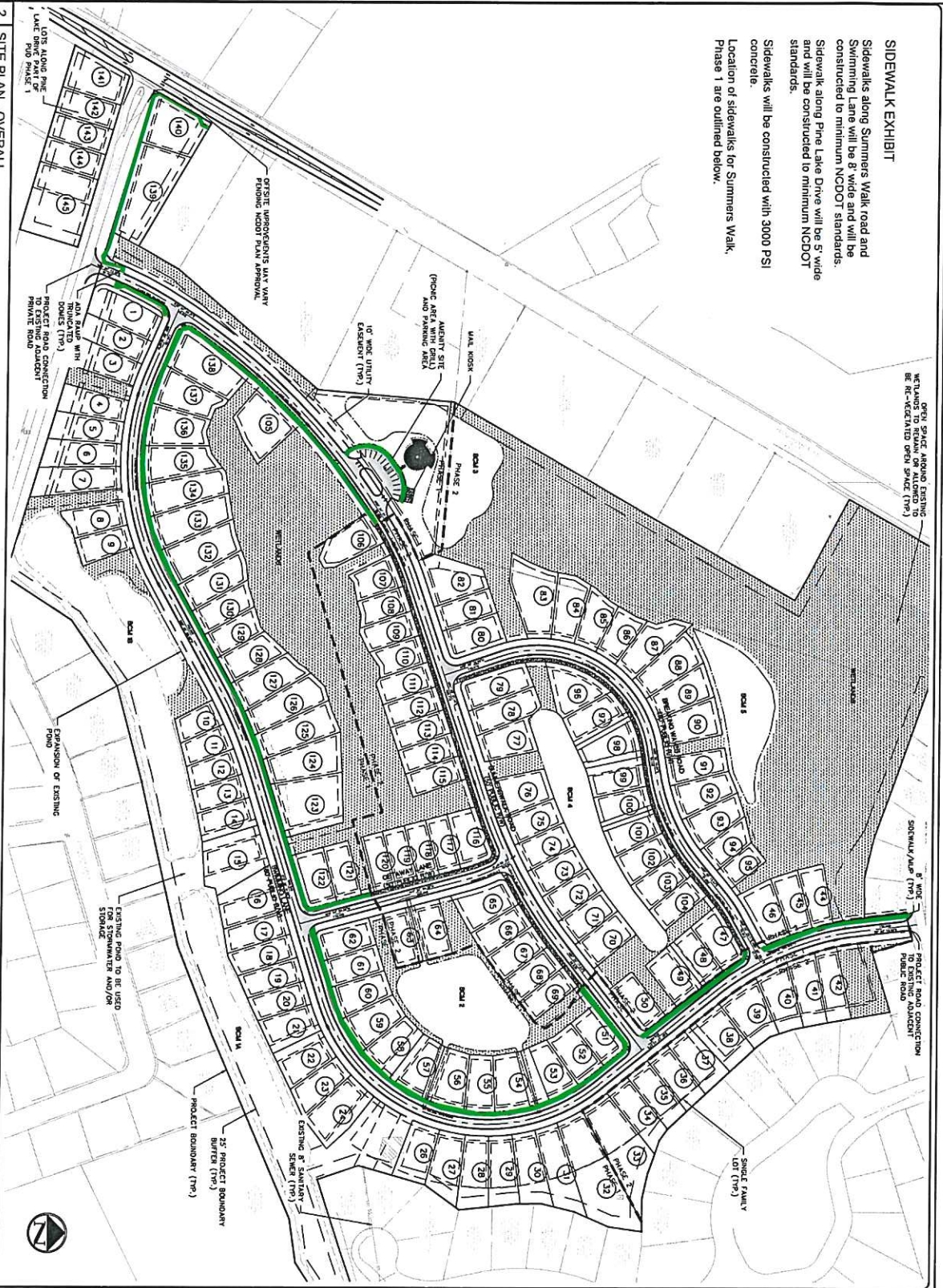


SIDEWALK EXHIBIT

Sidewalks along Summers Walk, road and Swimming Lane will be 8' wide and will be constructed to minimum NCDOT standards. Sidewalk along Pine Lake Drive will be 5' wide and will be constructed to minimum NCDOT standards. Sidewalks will be constructed with 3000 PSI concrete. Location of sidewalks for Summers Walk, Phase 1 are outlined below.



2 SITE PLAN - OVERALL

| NO. | DESCRIPTION | DATE | BY | CHECKED | DATE | BY |
|-----|-------------|------|----|---------|------|----|
| 1 | PRELIMINARY | | | | | |
| 2 | REVISED | | | | | |
| 3 | REVISED | | | | | |
| 4 | REVISED | | | | | |
| 5 | REVISED | | | | | |
| 6 | REVISED | | | | | |
| 7 | REVISED | | | | | |
| 8 | REVISED | | | | | |
| 9 | REVISED | | | | | |
| 10 | REVISED | | | | | |
| 11 | REVISED | | | | | |
| 12 | REVISED | | | | | |
| 13 | REVISED | | | | | |
| 14 | REVISED | | | | | |
| 15 | REVISED | | | | | |
| 16 | REVISED | | | | | |
| 17 | REVISED | | | | | |
| 18 | REVISED | | | | | |
| 19 | REVISED | | | | | |
| 20 | REVISED | | | | | |
| 21 | REVISED | | | | | |
| 22 | REVISED | | | | | |
| 23 | REVISED | | | | | |
| 24 | REVISED | | | | | |
| 25 | REVISED | | | | | |
| 26 | REVISED | | | | | |
| 27 | REVISED | | | | | |
| 28 | REVISED | | | | | |
| 29 | REVISED | | | | | |
| 30 | REVISED | | | | | |
| 31 | REVISED | | | | | |
| 32 | REVISED | | | | | |
| 33 | REVISED | | | | | |
| 34 | REVISED | | | | | |
| 35 | REVISED | | | | | |
| 36 | REVISED | | | | | |
| 37 | REVISED | | | | | |
| 38 | REVISED | | | | | |
| 39 | REVISED | | | | | |
| 40 | REVISED | | | | | |
| 41 | REVISED | | | | | |
| 42 | REVISED | | | | | |
| 43 | REVISED | | | | | |
| 44 | REVISED | | | | | |
| 45 | REVISED | | | | | |
| 46 | REVISED | | | | | |
| 47 | REVISED | | | | | |
| 48 | REVISED | | | | | |
| 49 | REVISED | | | | | |
| 50 | REVISED | | | | | |
| 51 | REVISED | | | | | |
| 52 | REVISED | | | | | |
| 53 | REVISED | | | | | |
| 54 | REVISED | | | | | |
| 55 | REVISED | | | | | |
| 56 | REVISED | | | | | |
| 57 | REVISED | | | | | |
| 58 | REVISED | | | | | |
| 59 | REVISED | | | | | |
| 60 | REVISED | | | | | |
| 61 | REVISED | | | | | |
| 62 | REVISED | | | | | |
| 63 | REVISED | | | | | |
| 64 | REVISED | | | | | |
| 65 | REVISED | | | | | |
| 66 | REVISED | | | | | |
| 67 | REVISED | | | | | |
| 68 | REVISED | | | | | |
| 69 | REVISED | | | | | |
| 70 | REVISED | | | | | |
| 71 | REVISED | | | | | |
| 72 | REVISED | | | | | |
| 73 | REVISED | | | | | |
| 74 | REVISED | | | | | |
| 75 | REVISED | | | | | |
| 76 | REVISED | | | | | |
| 77 | REVISED | | | | | |
| 78 | REVISED | | | | | |
| 79 | REVISED | | | | | |
| 80 | REVISED | | | | | |
| 81 | REVISED | | | | | |
| 82 | REVISED | | | | | |
| 83 | REVISED | | | | | |
| 84 | REVISED | | | | | |
| 85 | REVISED | | | | | |
| 86 | REVISED | | | | | |
| 87 | REVISED | | | | | |
| 88 | REVISED | | | | | |
| 89 | REVISED | | | | | |
| 90 | REVISED | | | | | |
| 91 | REVISED | | | | | |
| 92 | REVISED | | | | | |
| 93 | REVISED | | | | | |
| 94 | REVISED | | | | | |
| 95 | REVISED | | | | | |
| 96 | REVISED | | | | | |
| 97 | REVISED | | | | | |
| 98 | REVISED | | | | | |
| 99 | REVISED | | | | | |
| 100 | REVISED | | | | | |
| 101 | REVISED | | | | | |
| 102 | REVISED | | | | | |
| 103 | REVISED | | | | | |
| 104 | REVISED | | | | | |
| 105 | REVISED | | | | | |
| 106 | REVISED | | | | | |
| 107 | REVISED | | | | | |
| 108 | REVISED | | | | | |
| 109 | REVISED | | | | | |
| 110 | REVISED | | | | | |
| 111 | REVISED | | | | | |
| 112 | REVISED | | | | | |
| 113 | REVISED | | | | | |
| 114 | REVISED | | | | | |
| 115 | REVISED | | | | | |
| 116 | REVISED | | | | | |
| 117 | REVISED | | | | | |
| 118 | REVISED | | | | | |
| 119 | REVISED | | | | | |



MCKIM & CREED
 243 North First Street
 Wilmington, North Carolina 28401
 Telephone: (910) 343-5000 Fax: (910) 343-4002
 www.mckimandcreed.com

SUMMERS WALK
 MC HARRISWAY 173, HARRISBURG COUNTY, NORTH CAROLINA 28133

SITE PLAN - OVERALL

SCALE: 1" = 100'

| | | | |
|-------------|-------------------------|------------|-------------------------|
| DATE | 2/23/2024 | SCALE | HORIZONTAL 1" = 100' |
| DESIGNED BY | CELESTINE | CHECKED BY | CELESTINE |
| PROJECT NO. | 2400000000 | DATE | 2/23/2024 |
| STATUS | ISSUED FOR CONSTRUCTION | | |