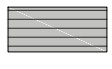
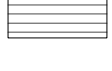


EXTERIOR ELEVATION MATERIAL LEGEND

- 

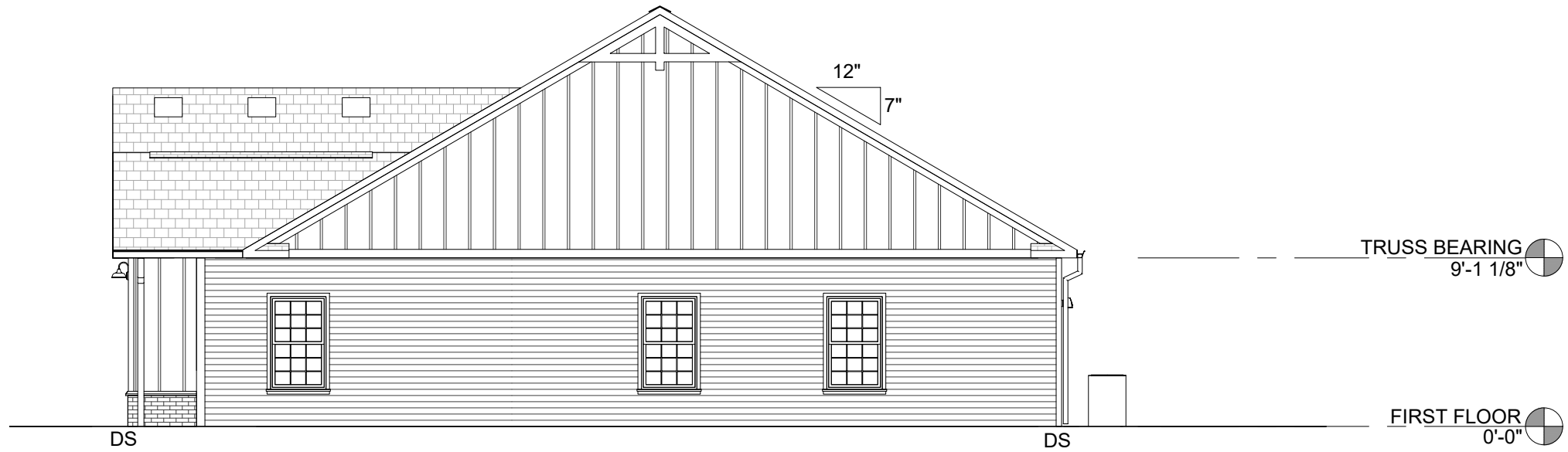
HORIZONTAL VINYL SIDING -BASIS OF DESIGN: MANUFACTURER: ROYAL BUILDING PRODUCTS "ESTATE ROYAL VINYL", PROFILE: D4 -0.044" THICK, COLOR: BLUE GRAY - ALTERNATES BETWEEN UNITS
- 

HORIZONTAL VINYL SIDING -BASIS OF DESIGN: MANUFACTURER: ROYAL BUILDING PRODUCTS "ESTATE ROYAL VINYL", PROFILE: D4 -0.044" THICK, COLOR: ROCKSLIDE - ALTERNATES BETWEEN UNITS
- 

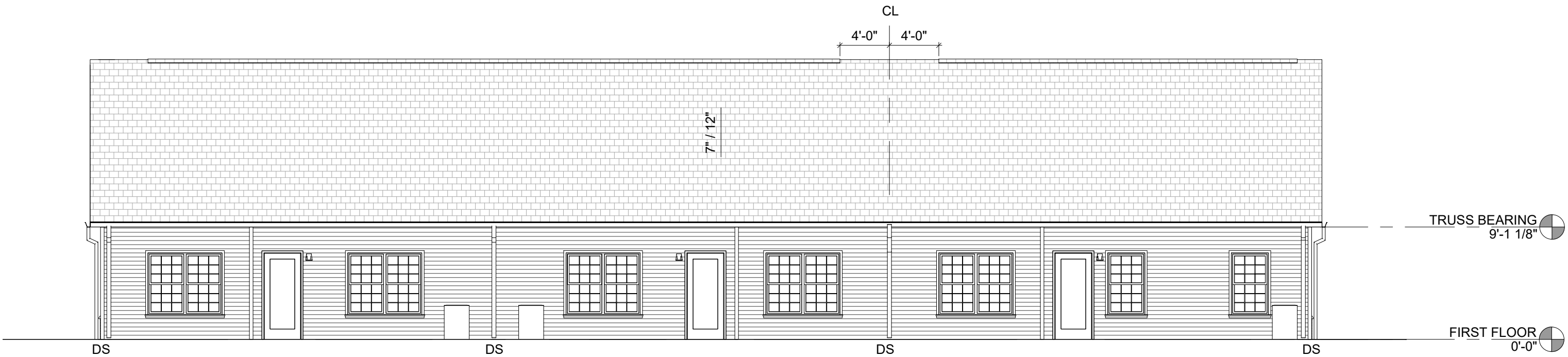
HORIZONTAL VINYL SIDING -BASIS OF DESIGN: MANUFACTURER: ROYAL BUILDING PRODUCTS "ESTATE ROYAL VINYL", PROFILE: D4 -0.044" THICK, COLOR: STERLING - ALTERNATES BETWEEN UNITS
- 

HORIZONTAL VINYL SIDING -BASIS OF DESIGN: MANUFACTURER: ROYAL BUILDING PRODUCTS "ESTATE ROYAL VINYL", PROFILE: D4 -0.044" THICK, COLOR: WHITE - ALTERNATES BETWEEN UNITS
- 

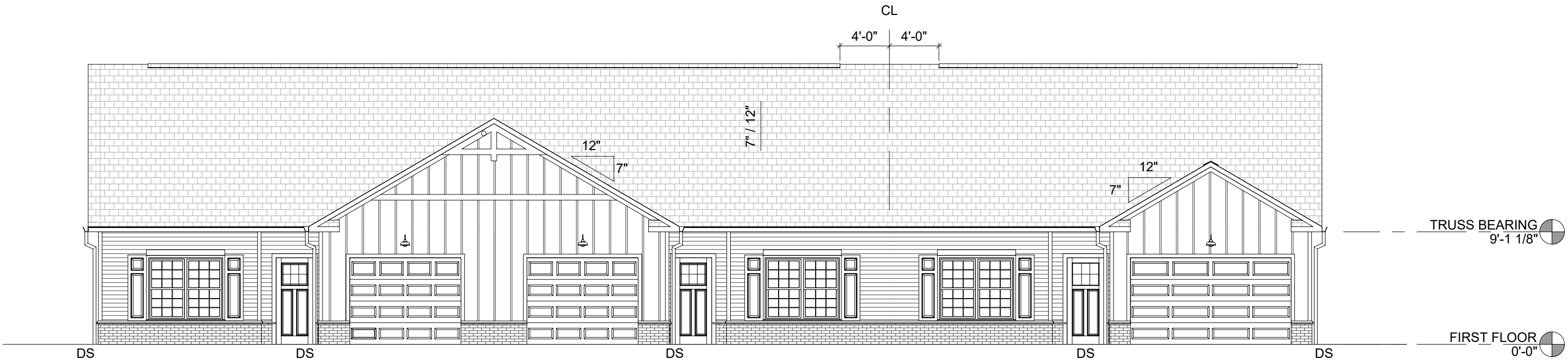
VINYL BOARD AND BATTEN -BASIS OF DESIGN: MANUFACTURER: ROYAL BUILDING PRODUCTS "BOARD AND BATTEN", PROFILE: BOARD AND BATTEN, COLOR: WHITE



SIDE ELEVATION
SCALE: 1/8" = 1'-0"



REAR ELEVATION
SCALE: 1/8" = 1'-0"



MAIN ENTRY ELEVATION
SCALE: 1/8" = 1'-0"



GEIS COMPANIES
10020 Aurora-Hudson Rd
Streetsboro, Ohio 44241
PH: (330) 528-3500
FX: (330) 528-0008
www.geisco.net

DATES AND REVISIONS

04-30-25
CONCEPT

NOTICE

THIS ARCHITECTURAL AND ENGINEERING DRAWING IS GIVEN IN CONFIDENCE. NO USE OR DISSEMINATION MAY BE MADE WITHOUT PRIOR WRITTEN CONSENT OF THE ARCHITECT. ALL RIGHTS ARE HEREBY SPECIFICALLY RESERVED. GEIS CONSTRUCTION

REVISIONS REFLECTED IN THESE DRAWINGS INVOLVE CHANGES TO CONTRACT PRICE PREVIOUSLY PROVIDED. CHANGE ORDERS WILL BE PROVIDED FOR ALL CHANGES. THESE CHANGES ARE NOT IN THE BASE BID.

RANCH HOME 3-UNIT
N MULBERRY RD NW
SHALLOTTE, NC

Drawn By
Checked By
Project Number

ELEVATIONS
DRAWING NO:

EL-1


EXTERIOR ELEVATION MATERIAL LEGEND

- 

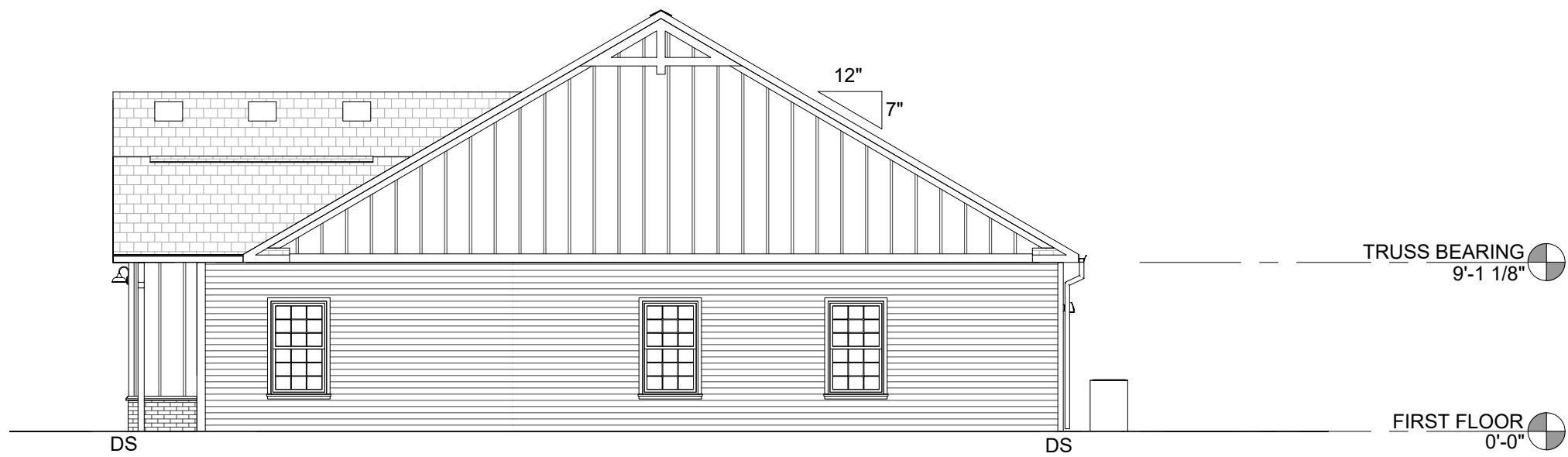
HORIZONTAL VINYL SIDING -BASIS OF DESIGN: MANUFACTURER: ROYAL BUILDING PRODUCTS "ESTATE ROYAL VINYL", PROFILE: D4 -0.044" THICK, COLOR: BLUE GRAY - ALTERNATES BETWEEN UNITS
- 

HORIZONTAL VINYL SIDING -BASIS OF DESIGN: MANUFACTURER: ROYAL BUILDING PRODUCTS "ESTATE ROYAL VINYL", PROFILE: D4 -0.044" THICK, COLOR: ROCKSLIDE - ALTERNATES BETWEEN UNITS
- 

HORIZONTAL VINYL SIDING -BASIS OF DESIGN: MANUFACTURER: ROYAL BUILDING PRODUCTS "ESTATE ROYAL VINYL", PROFILE: D4 -0.044" THICK, COLOR: STERLING - ALTERNATES BETWEEN UNITS
- 

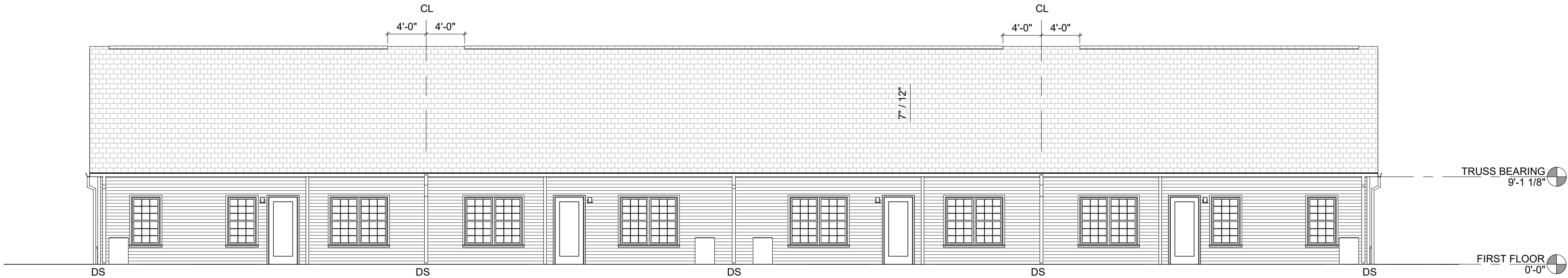
HORIZONTAL VINYL SIDING -BASIS OF DESIGN: MANUFACTURER: ROYAL BUILDING PRODUCTS "ESTATE ROYAL VINYL", PROFILE: D4 -0.044" THICK, COLOR: WHITE - ALTERNATES BETWEEN UNITS
- 

VINYL BOARD AND BATTEN -BASIS OF DESIGN: MANUFACTURER: ROYAL BUILDING PRODUCTS "BOARD AND BATTEN", PROFILE: BOARD AND BATTEN, COLOR: WHITE



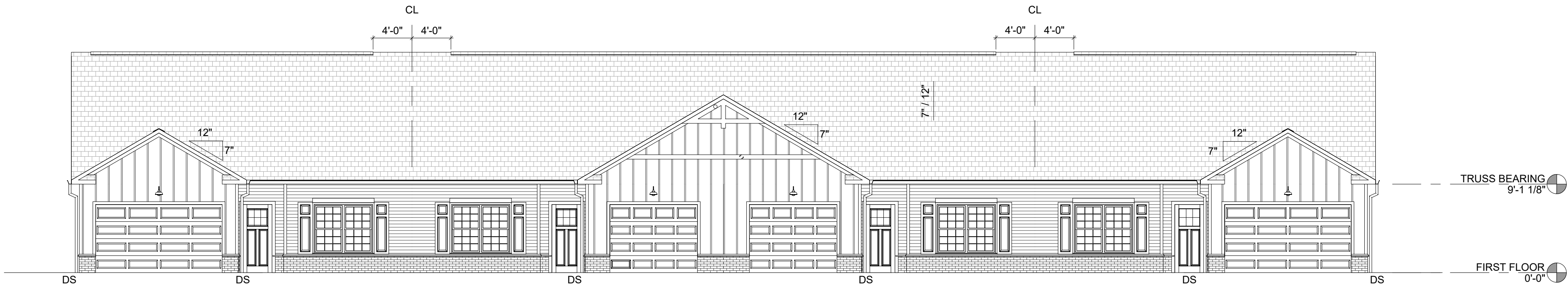
SIDE ELEVATION

SCALE: 1/8" = 1'-0"



REAR ELEVATION

SCALE: 1/8" = 1'-0"



MAIN ENTRY ELEVATION

SCALE: 1/8" = 1'-0"



GEIS COMPANIES
10020 Aurora-Hudson Rd
Streetsboro, Ohio 44241
PH: (330) 528-3500
FX: (330) 528-0008
www.geisco.net

DATES AND REVISIONS

04-30-25
CONCEPT

NOTICE

THIS ARCHITECTURAL AND ENGINEERING DRAWING IS GIVEN IN CONFIDENCE. NO USE OR DISSEMINATION MAY BE MADE WITHOUT PRIOR WRITTEN CONSENT OF THE ARCHITECT. ALL RIGHTS ARE HEREBY SPECIFICALLY RESERVED. GEIS CONSTRUCTION

REVISIONS REFLECTED IN THESE DRAWINGS INVOLVE CHANGES TO CONTRACT PRICE PREVIOUSLY PROVIDED. CHANGE ORDERS WILL BE PROVIDED FOR ALL CHANGES. THESE CHANGES ARE NOT IN THE BASE BID.

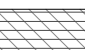

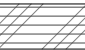
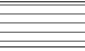




RANCH HOME 4-UNIT
N MULBERRY RD NW
SHALLOTTE, NC

Drawn By
Checked By
Project Number

ELEVATIONS
DRAWING NO:

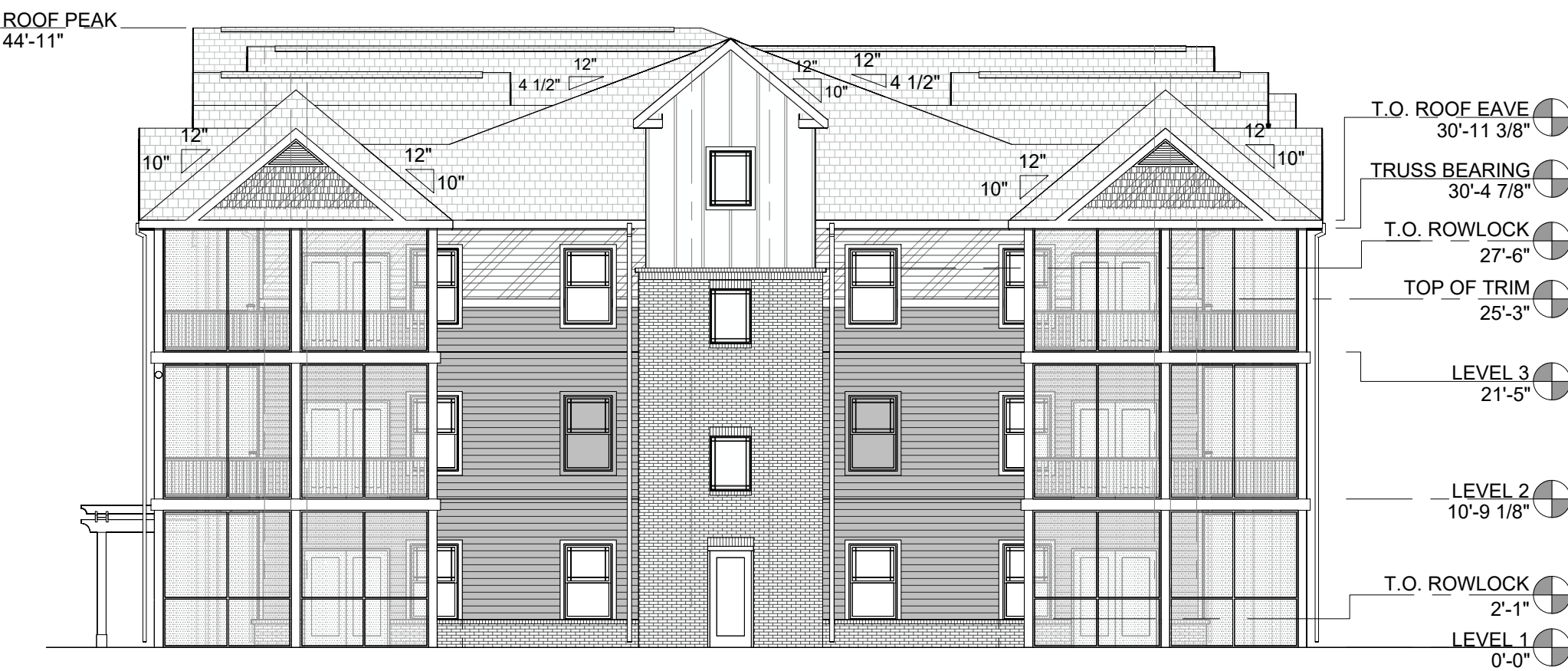
EL-2

EXTERIOR ELEVATION MATERIAL LEGEND

-  HORIZONTAL VINYL SIDING -BASIS OF DESIGN: MANUFACTURER: ROYAL BUILDING PRODUCTS "ESTATE ROYAL VINYL", PROFILE: D4 -0.044" THICK, COLOR: BLUE GRAY
-  HORIZONTAL VINYL SIDING -BASIS OF DESIGN: MANUFACTURER: ROYAL BUILDING PRODUCTS "ESTATE ROYAL VINYL", PROFILE: D4 -0.044" THICK, COLOR: ROCKSLIDE
-  HORIZONTAL VINYL SIDING -BASIS OF DESIGN: MANUFACTURER: ROYAL BUILDING PRODUCTS "ESTATE ROYAL VINYL", PROFILE: D4 -0.044" THICK, COLOR: STERLING
-  HORIZONTAL VINYL SIDING -BASIS OF DESIGN: MANUFACTURER: ROYAL BUILDING PRODUCTS "ESTATE ROYAL VINYL", PROFILE: D4 -0.044" THICK, COLOR: WHITE
-  VINYL BOARD AND BATTEN -BASIS OF DESIGN: MANUFACTURER: ROYAL BUILDING PRODUCTS "BOARD AND BATTEN", PROFILE: BOARD AND BATTEN, COLOR: WHITE
-  VINYL SHAKE SIDING -BASIS OF DESIGN: MANUFACTURER: ROYAL BUILDING PRODUCTS, COLOR: BLUE GRAY
-  VINYL SHAKE SIDING -BASIS OF DESIGN: MANUFACTURER: ROYAL BUILDING PRODUCTS, COLOR: STERLING
-  MODULAR BRICK -BASIS OF DESIGN: TBD



LEFT OF MAIN ENTRY ELEVATION
SCALE: 3/32" = 1'-0"



RIGHT OF MAIN ENTRY ELEVATION
SCALE: 3/32" = 1'-0"



MAIN ENTRY ELEVATION - LEFT
SCALE: 3/32" = 1'-0"



MAIN ENTRY ELEVATION - RIGHT
SCALE: 3/32" = 1'-0"



GEIS COMPANIES
10020 Aurora-Hudson Rd
Streetsboro, Ohio 44241
PH: (330) 528-3500
FX: (330) 528-0008
www.geisco.net

DATES AND REVISIONS

04-30-25
CONCEPT

NOTICE

THIS ARCHITECTURAL AND ENGINEERING DRAWING IS GIVEN IN CONFIDENCE. NO USE OR DISSEMINATION MAY BE MADE WITHOUT PRIOR WRITTEN CONSENT OF THE ARCHITECT. ALL RIGHTS ARE HEREBY SPECIFICALLY RESERVED.
GEIS CONSTRUCTION
REVISIONS REFLECTED IN THESE DRAWINGS INVOLVE CHANGES TO CONTRACT PRICE PREVIOUSLY PROVIDED. CHANGE ORDERS WILL BE PROVIDED FOR ALL CHANGES. THESE CHANGES ARE NOT IN THE BASE BID.

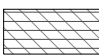
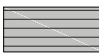
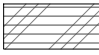
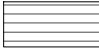




BUILDING A & B
N MULBERRY RD NW
SHALLOTTE, NC

Drawn By
Checked By
Project Number

ELEVATIONS
DRAWING NO:

EL-3.1

EXTERIOR ELEVATION MATERIAL LEGEND

-  HORIZONTAL VINYL SIDING -BASIS OF DESIGN: MANUFACTURER: ROYAL BUILDING PRODUCTS "ESTATE ROYAL VINYL", PROFILE: D4 -0.044" THICK, COLOR: BLUE GRAY
-  HORIZONTAL VINYL SIDING -BASIS OF DESIGN: MANUFACTURER: ROYAL BUILDING PRODUCTS "ESTATE ROYAL VINYL", PROFILE: D4 -0.044" THICK, COLOR: ROCKSLIDE
-  HORIZONTAL VINYL SIDING -BASIS OF DESIGN: MANUFACTURER: ROYAL BUILDING PRODUCTS "ESTATE ROYAL VINYL", PROFILE: D4 -0.044" THICK, COLOR: STERLING
-  HORIZONTAL VINYL SIDING -BASIS OF DESIGN: MANUFACTURER: ROYAL BUILDING PRODUCTS "ESTATE ROYAL VINYL", PROFILE: D4 -0.044" THICK, COLOR: WHITE
-  VINYL BOARD AND BATTEN -BASIS OF DESIGN: MANUFACTURER: ROYAL BUILDING PRODUCTS "BOARD AND BATTEN", PROFILE: BOARD AND BATTEN, COLOR: WHITE
-  VINYL SHAKE SIDING -BASIS OF DESIGN: MANUFACTURER: ROYAL BUILDING PRODUCTS, COLOR: BLUE GRAY
-  VINYL SHAKE SIDING -BASIS OF DESIGN: MANUFACTURER: ROYAL BUILDING PRODUCTS, COLOR: STERLING
-  MODULAR BRICK -BASIS OF DESIGN: TBD



GEIS COMPANIES
10020 Aurora-Hudson Rd
Streetsboro, Ohio 44241
PH: (330) 528-3500
FX: (330) 528-0008
www.geisco.net

DATES AND REVISIONS

04-30-25
CONCEPT

NOTICE

THIS ARCHITECTURAL AND ENGINEERING DRAWING IS GIVEN IN CONFIDENCE. NO USE OR DISSEMINATION MAY BE MADE WITHOUT PRIOR WRITTEN CONSENT OF THE ARCHITECT. ALL RIGHTS ARE HEREBY SPECIFICALLY RESERVED. GEIS CONSTRUCTION.

REVISIONS REFLECTED IN THESE DRAWINGS INVOLVE CHANGES TO CONTRACT PRICE PREVIOUSLY PROVIDED. CHANGE ORDERS WILL BE PROVIDED FOR ALL CHANGES. THESE CHANGES ARE NOT IN THE BASE BID.

BUILDING A & B
N MULBERRY RD NW
SHALLOTTE, NC

Drawn By
Checked By
Project Number

ELEVATIONS
DRAWING NO:

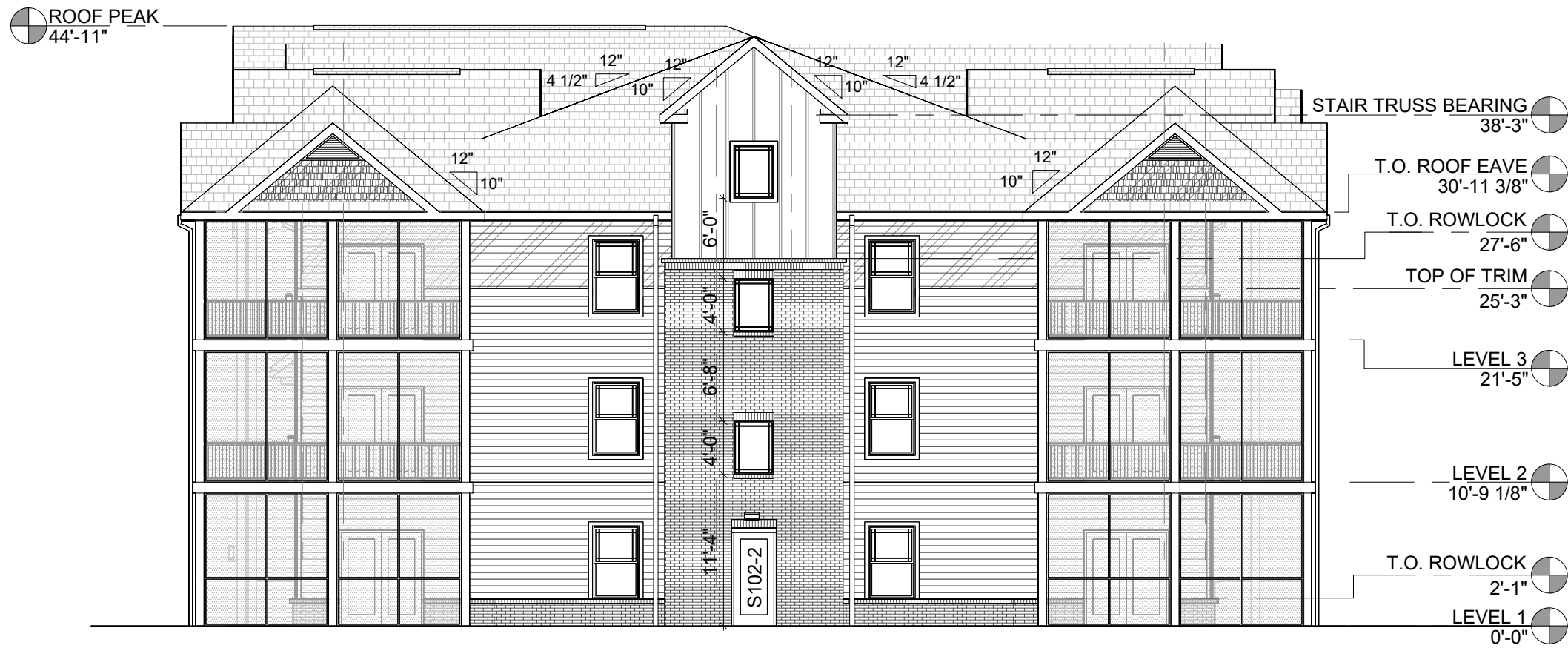
EL-3.2

EXTERIOR ELEVATION MATERIAL LEGEND

- HORIZONTAL VINYL SIDING -BASIS OF DESIGN: MANUFACTURER: ROYAL BUILDING PRODUCTS "ESTATE ROYAL VINYL", PROFILE: D4 -0.044" THICK, COLOR: BLUE GRAY
- HORIZONTAL VINYL SIDING -BASIS OF DESIGN: MANUFACTURER: ROYAL BUILDING PRODUCTS "ESTATE ROYAL VINYL", PROFILE: D4 -0.044" THICK, COLOR: ROCKSLIDE
- HORIZONTAL VINYL SIDING -BASIS OF DESIGN: MANUFACTURER: ROYAL BUILDING PRODUCTS "ESTATE ROYAL VINYL", PROFILE: D4 -0.044" THICK, COLOR: STERLING
- HORIZONTAL VINYL SIDING -BASIS OF DESIGN: MANUFACTURER: ROYAL BUILDING PRODUCTS "ESTATE ROYAL VINYL", PROFILE: D4 -0.044" THICK, COLOR: WHITE
- VINYL BOARD AND BATTEN -BASIS OF DESIGN: MANUFACTURER: ROYAL BUILDING PRODUCTS "BOARD AND BATTEN", PROFILE: BOARD AND BATTEN, COLOR: WHITE
- VINYL SHAKE SIDING -BASIS OF DESIGN: MANUFACTURER: ROYAL BUILDING PRODUCTS, COLOR: BLUE GRAY
- VINYL SHAKE SIDING -BASIS OF DESIGN: MANUFACTURER: ROYAL BUILDING PRODUCTS, COLOR: STERLING
- MODULAR BRICK -BASIS OF DESIGN: TBD



SOUTH ELEVATION
SCALE: 3/32" = 1'-0"



NORTH ELEVATION
SCALE: 3/32" = 1'-0"



EAST ELEVATION - LEFT
SCALE: 3/32" = 1'-0"



EAST ELEVATION - RIGHT
SCALE: 3/32" = 1'-0"



GEIS COMPANIES
10020 Aurora-Hudson Rd
Streetsboro, Ohio 44241
PH: (330) 528-3500
FX: (330) 528-0008
www.geisco.net

DATES AND REVISIONS

04-30-25
CONCEPT

NOTICE
THIS ARCHITECTURAL AND ENGINEERING DRAWING IS GIVEN IN CONFIDENCE. NO USE OR DISSEMINATION MAY BE MADE WITHOUT PRIOR WRITTEN CONSENT OF THE ARCHITECT. ALL RIGHTS ARE HEREBY SPECIFICALLY RESERVED.
GEIS CONSTRUCTION
REVISIONS REFLECTED IN THESE DRAWINGS INVOLVE CHANGES TO CONTRACT PRICE PREVIOUSLY PROVIDED. CHANGE ORDERS WILL BE PROVIDED FOR ALL CHANGES. THESE CHANGES ARE NOT IN THE BASE BID.

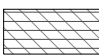
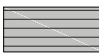
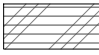
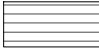




BUILDING C
N MULBERRY RD NW
SHALLOTTE, NC

Drawn By
Checked By
Project Number

ELEVATIONS
DRAWING NO:

EL-4.1

EXTERIOR ELEVATION MATERIAL LEGEND

-  HORIZONTAL VINYL SIDING -BASIS OF DESIGN: MANUFACTURER: ROYAL BUILDING PRODUCTS "ESTATE ROYAL VINYL", PROFILE: D4 -0.044" THICK, COLOR: BLUE GRAY
-  HORIZONTAL VINYL SIDING -BASIS OF DESIGN: MANUFACTURER: ROYAL BUILDING PRODUCTS "ESTATE ROYAL VINYL", PROFILE: D4 -0.044" THICK, COLOR: ROCKSLIDE
-  HORIZONTAL VINYL SIDING -BASIS OF DESIGN: MANUFACTURER: ROYAL BUILDING PRODUCTS "ESTATE ROYAL VINYL", PROFILE: D4 -0.044" THICK, COLOR: STERLING
-  HORIZONTAL VINYL SIDING -BASIS OF DESIGN: MANUFACTURER: ROYAL BUILDING PRODUCTS "ESTATE ROYAL VINYL", PROFILE: D4 -0.044" THICK, COLOR: WHITE
-  VINYL BOARD AND BATTEN -BASIS OF DESIGN: MANUFACTURER: ROYAL BUILDING PRODUCTS "BOARD AND BATTEN", PROFILE: BOARD AND BATTEN, COLOR: WHITE
-  VINYL SHAKE SIDING -BASIS OF DESIGN: MANUFACTURER: ROYAL BUILDING PRODUCTS, COLOR: BLUE GRAY
-  VINYL SHAKE SIDING -BASIS OF DESIGN: MANUFACTURER: ROYAL BUILDING PRODUCTS, COLOR: STERLING
-  MODULAR BRICK -BASIS OF DESIGN: TBD



WEST ELEVATION - LEFT

SCALE: 3/32" = 1'-0"



WEST ELEVATION - RIGHT

SCALE: 3/32" = 1'-0"



GEIS COMPANIES
10020 Aurora-Hudson Rd
Streetsboro, Ohio 44241
PH: (330) 528-3500
FX: (330) 528-0008
www.geisco.net

DATES AND REVISIONS

04-30-25
CONCEPT

NOTICE

THIS ARCHITECTURAL AND ENGINEERING DRAWING IS GIVEN IN CONFIDENCE. NO USE OR DISSEMINATION MAY BE MADE WITHOUT PRIOR WRITTEN CONSENT OF THE ARCHITECT. ALL RIGHTS ARE HEREBY SPECIFICALLY RESERVED. GEIS CONSTRUCTION.

REVISIONS REFLECTED IN THESE DRAWINGS INVOLVE CHANGES TO CONTRACT PRICE PREVIOUSLY PROVIDED. CHANGE ORDERS WILL BE PROVIDED FOR ALL CHANGES. THESE CHANGES ARE NOT IN THE BASE BID.

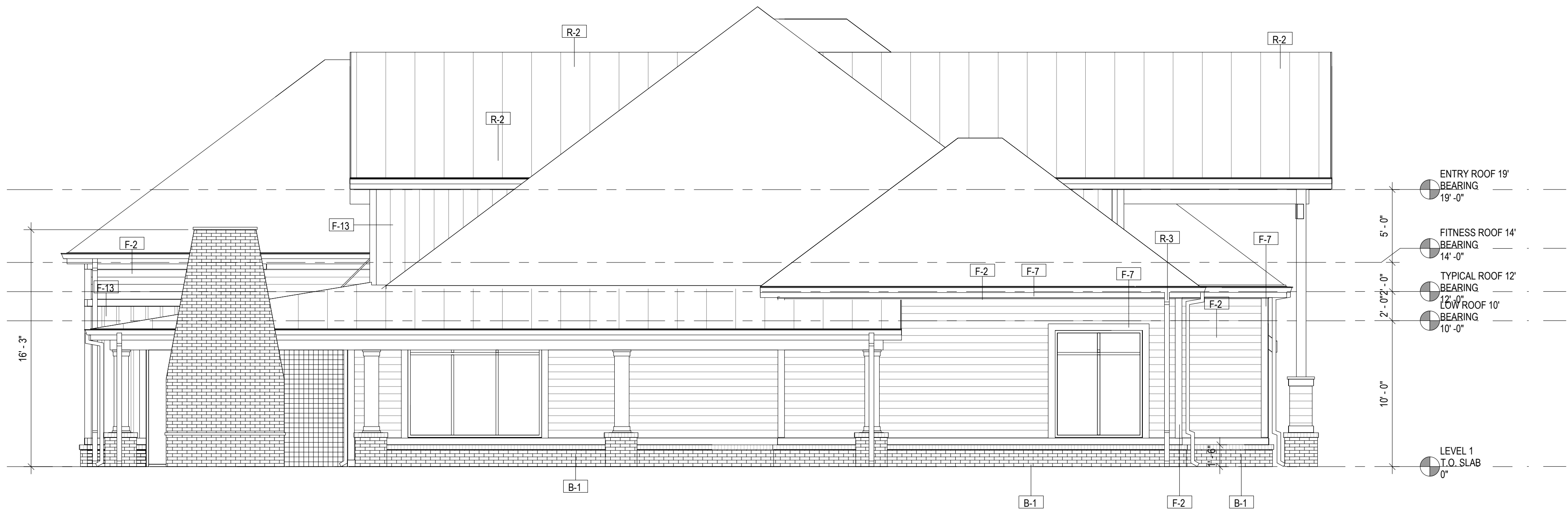
BUILDING C
N MULBERRY RD NW
SHALLOTTE, NC

Drawn By
Checked By
Project Number

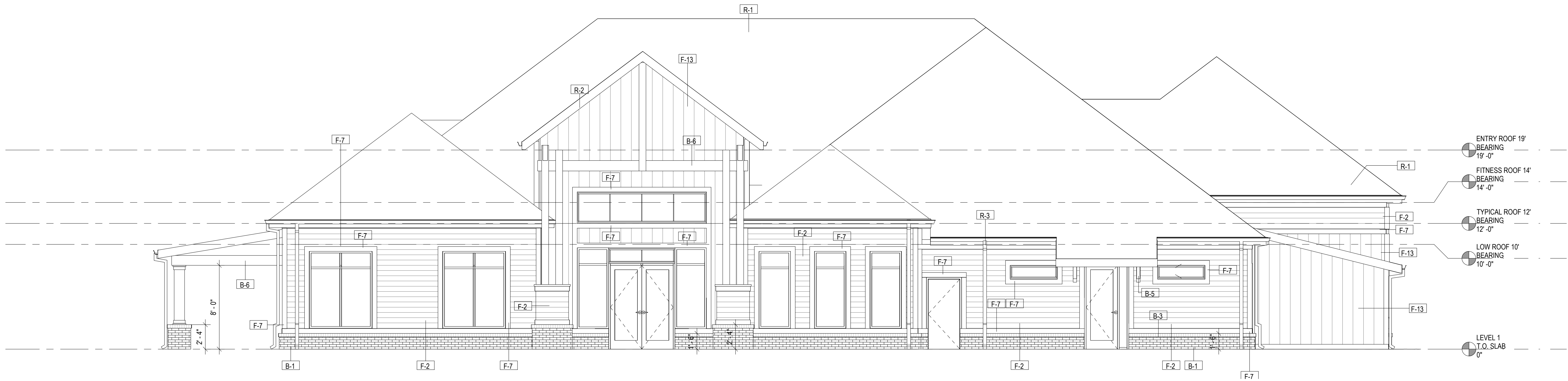
ELEVATIONS
DRAWING NO:

EL-4.2

FINISH SCHEDULE	
TAG	MATERIAL
B-1	MASONRY 1
B-3	BRICK ROWLOCK
B-6	BRACKET, REF STRUCTURAL DRAWINGS
B-6	WOOD BEAM
C-2	MAPES CANOPY
C-3	PRECAST CAP
F-2	FIBER CEMENT LAP SIDING 1 (WHITE) - 7" EXPOSURE
F-7	FIBER CEMENT TRIM 1X6
F-12	FASCIA BOARD, SEE A8 SHEETS FOR SIZE
F-13	FIBER CEMENT VERTICAL SIDING (WHITE)
F-14	FIBER CEMENT VERTICAL SIDING (BLUE)
P-2	PRECAST SILL
R-1	SHINGLE ROOF
R-2	STANDING SEAM METAL ROOF
R-3	ROOF GUTTER & DS. DS TO TIE INTO METAL BOOT REFER TO CIVIL
R-4	TPO ROOF
T-1	EXTERIOR TILE



SOUTH ELEVATION
SCALE: 3/16" = 1'-0"



EAST ELEVATION
SCALE: 3/16" = 1'-0"



GEIS COMPANIES
10020 Aurora-Hudson Rd
Streetsboro, Ohio 44241
PH: (330) 528-3500
FX: (330) 528-0008
www.geisco.net

DATES AND REVISIONS

04-30-25
CONCEPT

NOTICE

THIS ARCHITECTURAL AND ENGINEERING DRAWING IS GIVEN IN CONFIDENCE. NO USE OR DISSEMINATION MAY BE MADE WITHOUT PRIOR WRITTEN CONSENT OF THE ARCHITECT. ALL RIGHTS ARE HEREBY SPECIFICALLY RESERVED.
GEIS CONSTRUCTION

REVISIONS REFLECTED IN THESE DRAWINGS INVOLVE CHANGES TO CONTRACT PRICE PREVIOUSLY PROVIDED. CHANGE ORDERS WILL BE PROVIDED FOR ALL CHANGES. THESE CHANGES ARE NOT IN THE BASE BID.

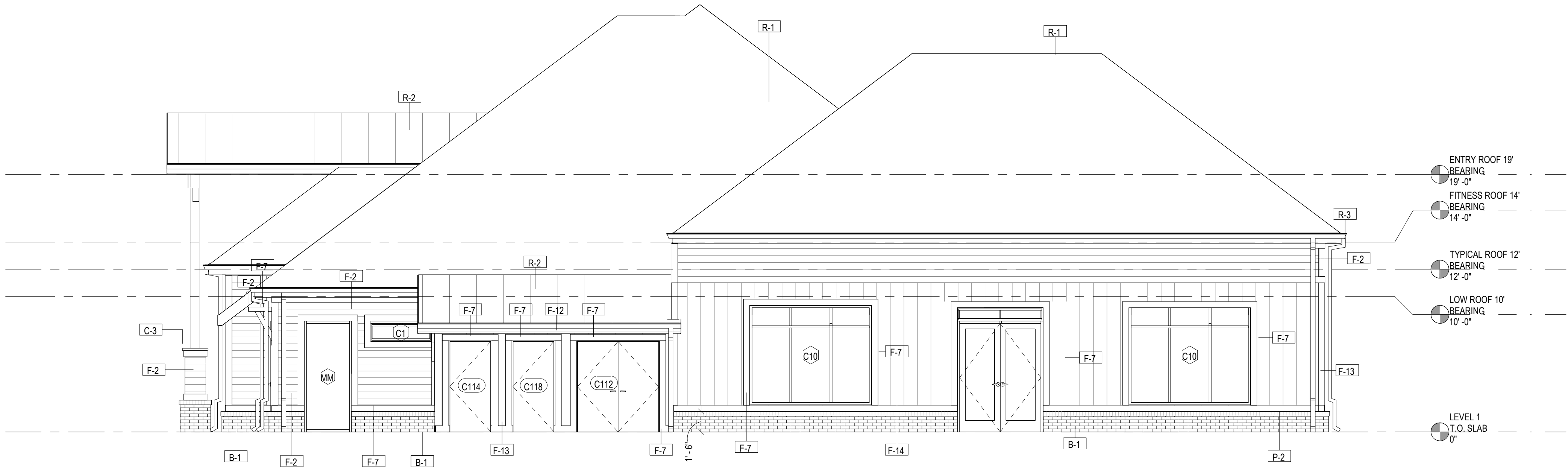
CLUBHOUSE
N MULBERRY RD NW
SHALLOTTE, NC

Drawn By
Checked By
Project Number

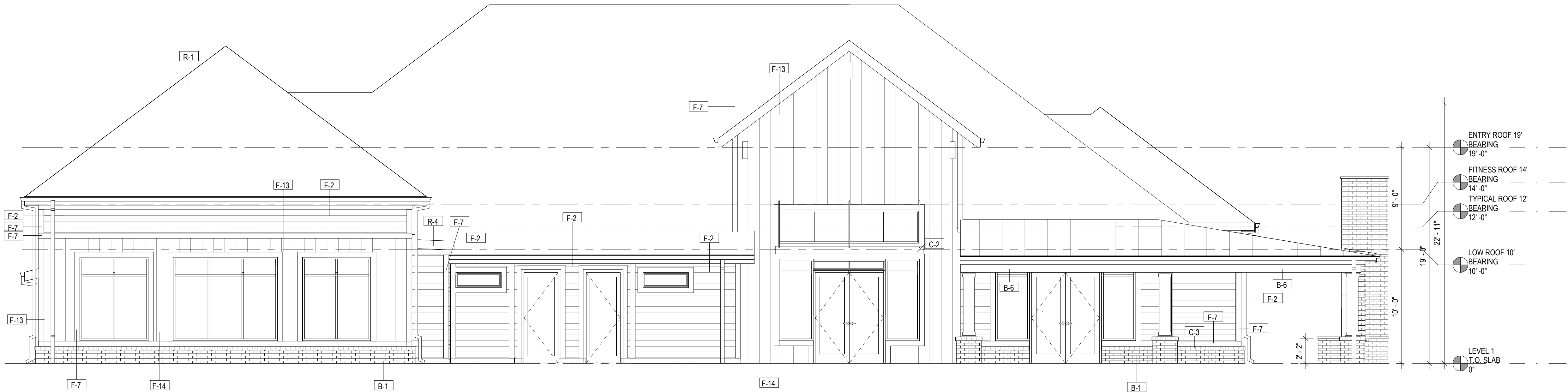
ELEVATIONS
DRAWING NO:

EL-5.1

FINISH SCHEDULE	
TAG	MATERIAL
B-1	MASONRY 1
B-3	BRICK ROWLOCK
B-6	BRACKET, REF. STRUCTURAL DRAWINGS
B-6	WOOD BEAM
C-2	MAPES CANOPY
C-3	PRECAST CAP
F-2	FIBER CEMENT LAP SIDING 1 (WHITE) - 7" EXPOSURE
F-7	FIBER CEMENT TRIM 1X6
F-12	FASCIA BOARD, SEE A8 SHEETS FOR SIZE
F-13	FIBER CEMENT VERTICAL SIDING (WHITE)
F-14	FIBER CEMENT VERTICAL SIDING (BLUE)
P-2	PRECAST SILL
R-1	SHINGLE ROOF
R-2	STANDING SEAM METAL ROOF
R-3	ROOF GUTTER & DS. DS TO TIE INTO METAL BOOT REFER TO CIVIL
R-4	TPO ROOF
T-1	EXTERIOR TILE



NORTH ELEVATION
SCALE: 3/16" = 1'-0"



WEST ELEVATION
SCALE: 3/16" = 1'-0"



GEIS COMPANIES
10020 Aurora-Hudson Rd
Streetsboro, Ohio 44241
PH: (330) 528-3500
FX: (330) 528-0008
www.geisco.net

DATES AND REVISIONS

04-30-25
CONCEPT

NOTICE

THIS ARCHITECTURAL AND ENGINEERING DRAWING IS GIVEN IN CONFIDENCE. NO USE OR DISSEMINATION MAY BE MADE WITHOUT PRIOR WRITTEN CONSENT OF THE ARCHITECT. ALL RIGHTS ARE HEREBY SPECIFICALLY RESERVED.
GEIS CONSTRUCTION

REVISIONS REFLECTED IN THESE DRAWINGS INVOLVE CHANGES TO CONTRACT PRICE PREVIOUSLY PROVIDED. CHANGE ORDERS WILL BE PROVIDED FOR ALL CHANGES. THESE CHANGES ARE NOT IN THE BASE BID.

CLUBHOUSE
N MULBERRY RD NW
SHALLOTTE, NC

Drawn By
Checked By
Project Number

ELEVATIONS
DRAWING NO:

EL-5.2