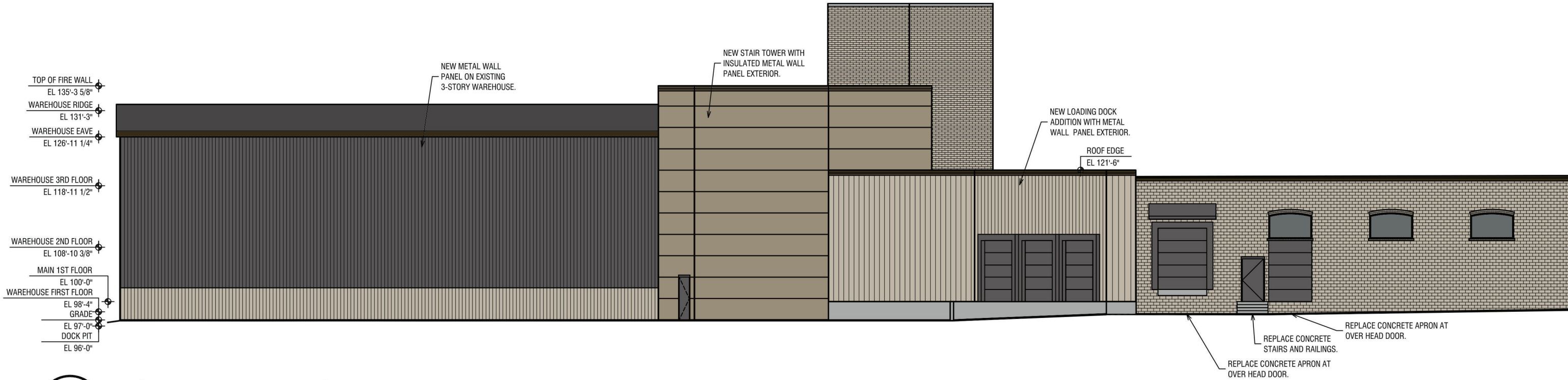
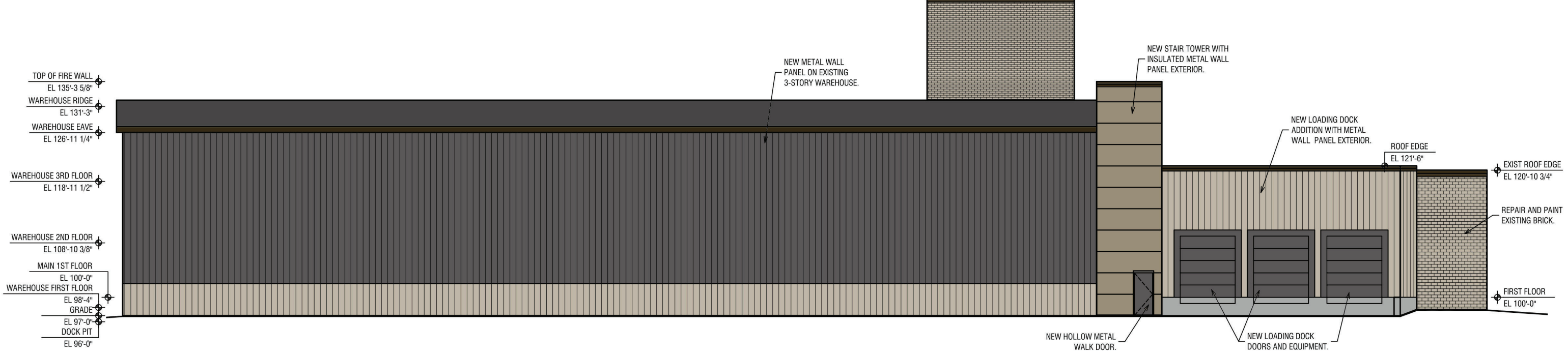


4/1/2024 3:26:29 PM BY CHRIS PENKALA J:\2024 JOBS\24-018 BITTER NEUMANN - DOCK ADDITION DESIGN-BUILD\DRAWINGS\24-018 BITTER NEUMANN - DOCK ADDITION.DWG © COPYRIGHT 2024 - JOS. SCHMITT CONST. CO., INC. - ALL RIGHTS RESERVED
 THIS DOCUMENT AND THE INFORMATION REPRESENTED HEREWITH MAY NOT BE COPIED, DOWNLOADED, STORED IN MACHINE-READABLE FORM, OR OTHERWISE REPRODUCED, DISSEMINATED, ADAPTED OR USED WITHOUT WRITTEN PERMISSION FROM JOS. SCHMITT CONST. CO., INC.



1
A3.1 **NORTH ELEVATION**
 SCALE: 1/16" = 1'-0" [11x17]
 SCALE: 1/8" = 1'-0" [22x34]



1
A3.1 **EAST ELEVATION**
 SCALE: 1/16" = 1'-0" [11x17]
 SCALE: 1/8" = 1'-0" [22x34]

**BUILDING RENOVATION FOR
 BITTER NEUMANN**
 APPLIANCE FURNITURE MATTRESS
 827 NORTH 14TH STREET
 SHEBOYGAN, WISCONSIN, 53081

**PRELIMINARY
 PROGRESS PRINT
 DO NOT USE FOR
 CONSTRUCTION**



DOCUMENT DATE 01 APRIL 2024	PROJECT NUMBER
REV.# DATE REVISED	SHEET DESCRIPTION ELEVATIONS
△	SHEET NUMBER
△	A3.1
DRAWN BY CHRIS	CHECKED BY

© COPYRIGHT 2024 -
 JOS. SCHMITT CONST. CO., INC.
 ALL RIGHTS RESERVED