

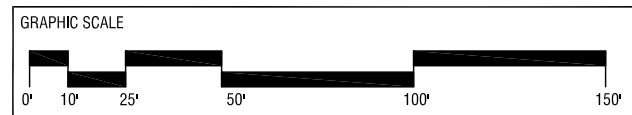
3/19/2024 11:57:50 AM BY CHRIS PENKALA J:\2024_JOBS\24-018 BITTER NEUMANN - DOCK ADDITION\DESIGN-BUILD\DRAWINGS\BITTER NEUMANN CUP\BITTER NEUMANN CUP.DWG © COPYRIGHT 2024 - JOS. SCHMITT CONST. CO., INC. - ALL RIGHTS RESERVED
 THIS DOCUMENT AND THE INFORMATION REPRESENTED HEREWITH MAY NOT BE COPIED, DOWNLOADED, STORED IN MACHINE-READABLE FORM, OR OTHERWISE REPRODUCED, DISSEMINATED, ADAPTED OR USED WITHOUT WRITTEN PERMISSION FROM HAMEISTER ARCHITECTS, INC.

BUILDING RENOVATION KEY - EXTERIOR

- - - PAINTED EXISTING FACADE TO COORDINATE WITH UPDATED EXTERIOR COLOR PALLET.
- - - INSTALLED NEW METAL WALL PANEL OVER EXISTING FACADE; COLOR TO COORDINATE WITH UPDATED EXTERIOR COLOR PALLET.
 - INSTALLED (3) ALUMINUM WINDOWS ON THE WEST FACADE INTO THE SECOND FLOOR SALES AREA.
- - - NEW LOADING DOCK ADDITION. NEW METAL WALL PANEL OVER EXISTING FACADE; COLOR TO COORDINATE WITH UPDATED EXTERIOR COLOR PALLET.

BUILDING RENOVATION KEY - INTERIOR

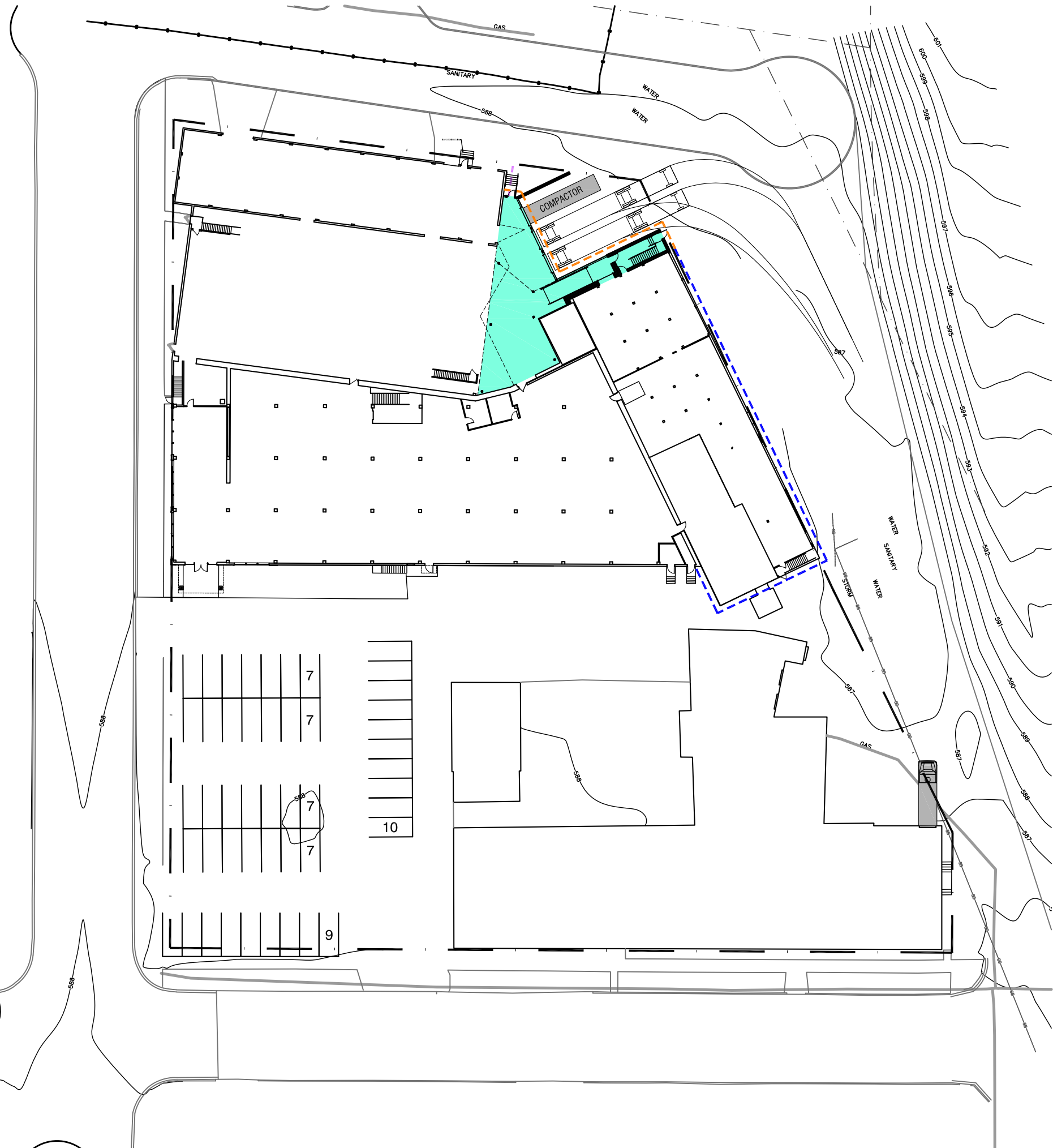
- LOADING DOCK ADDITION; 2,800 SF
 - DEMO 11,000 SF OF EXISTING WAREHOUSE AND LOADING DOCKS.
 - INSTALL (3) NEW LOADING DOCKS THAT WILL ACCOMMODATE SEMIS ON PROPERTY.
 - INSTALL NEW EGRESS STAIR CONNECTING (3) LEVELS OF WAREHOUSE AND SECOND FLOOR OF SALES.



**FACILITY RENOVATION
SITE PLAN**

1
A1.2

SCALE: 1" = 50'-0" [11x17]
 SCALE: 1" = 25'-0" [22x34]



BUILDING BETTER TOGETHER

**PRELIMINARY
PROGRESS PRINT
DO NOT USE FOR
CONSTRUCTION**

**BUILDING RENOVATION FOR
BITTER NEUMANN
APPLIANCE FURNITURE MATTRESS**
 827 NORTH 14TH STREET
 SHEBOYGAN, WISCONSIN, 53081

DOCUMENT DATE	
19 MARCH 2023	
REV. #	DATE REVISED
DRAWN BY	CHECKED BY
CHRIS	
PROJECT NUMBER	
SHEET DESCRIPTION	
FACILITY RENOVATION PLAN	
SHEET NUMBER	
A1.2	

© COPYRIGHT 2024 - JOS. SCHMITT CONST. CO., INC. ALL RIGHTS RESERVED