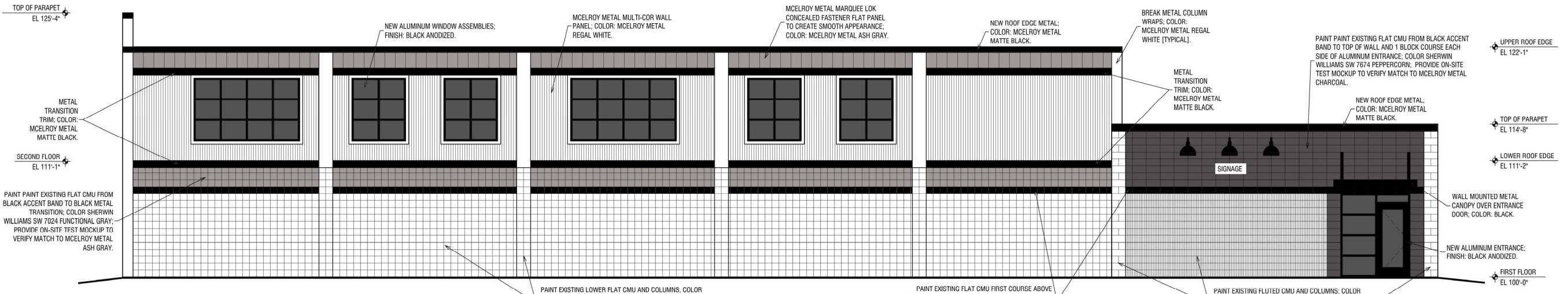


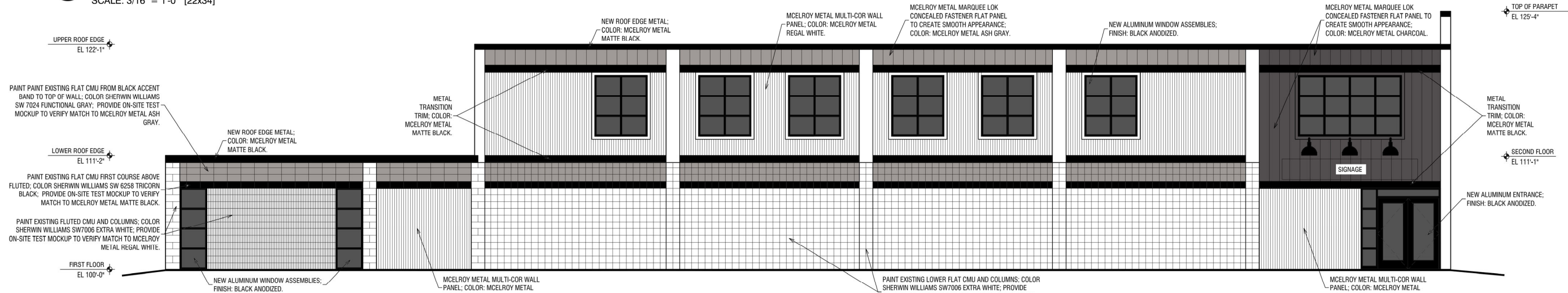




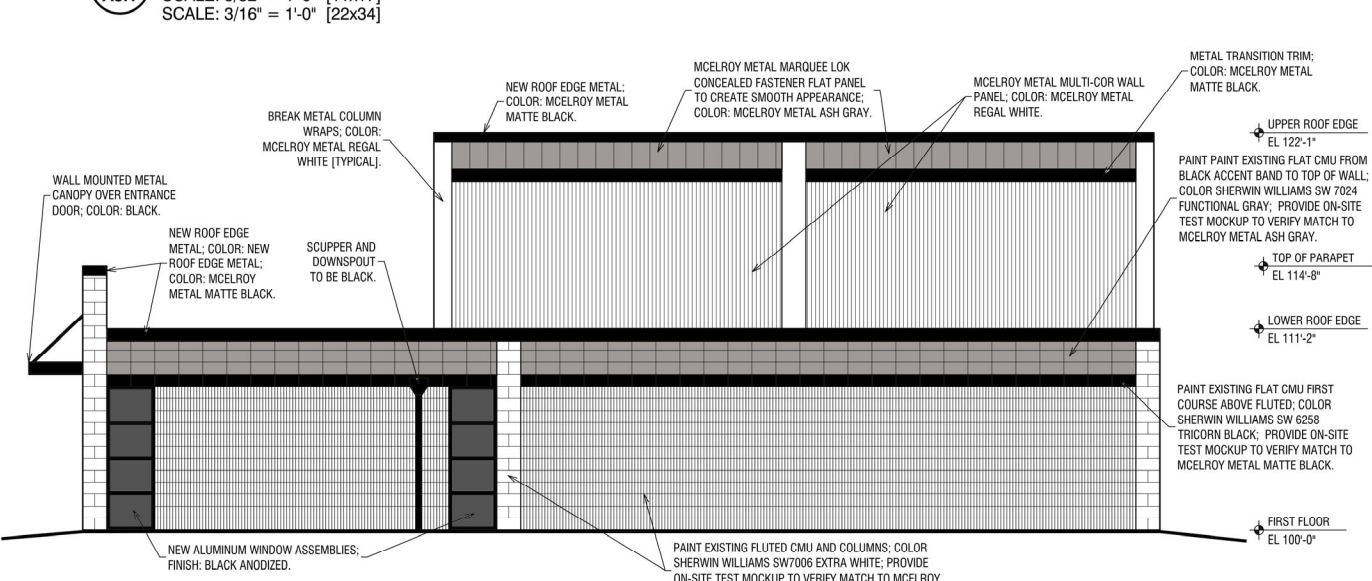
3/10/2025 11:42:42 AM BY CHRIS PEINKALA J:\2024 JOBS\24-004 DESIGN-BUILD JOBS\011 - SHEBOYGAN FAMILY EYE CARE\DRAWINGS\24004-011 SHEBOYGAN FAMILY EYE CARE.DWG © COPYRIGHT 2025 - JCS. SCHMITT CONST. CO., INC. - ALL RIGHTS RESERVED. THIS DOCUMENT AND THE INFORMATION REPRESENTED HEREWITH MAY NOT BE COPIED, DOWNLOADED, STORED IN MACHINE-READABLE FORM, OR OTHERWISE REPRODUCED, DISSEMINATED, ADAPTED OR USED WITHOUT WRITTEN PERMISSION FROM JCS. SCHMITT CONST. CO., INC.



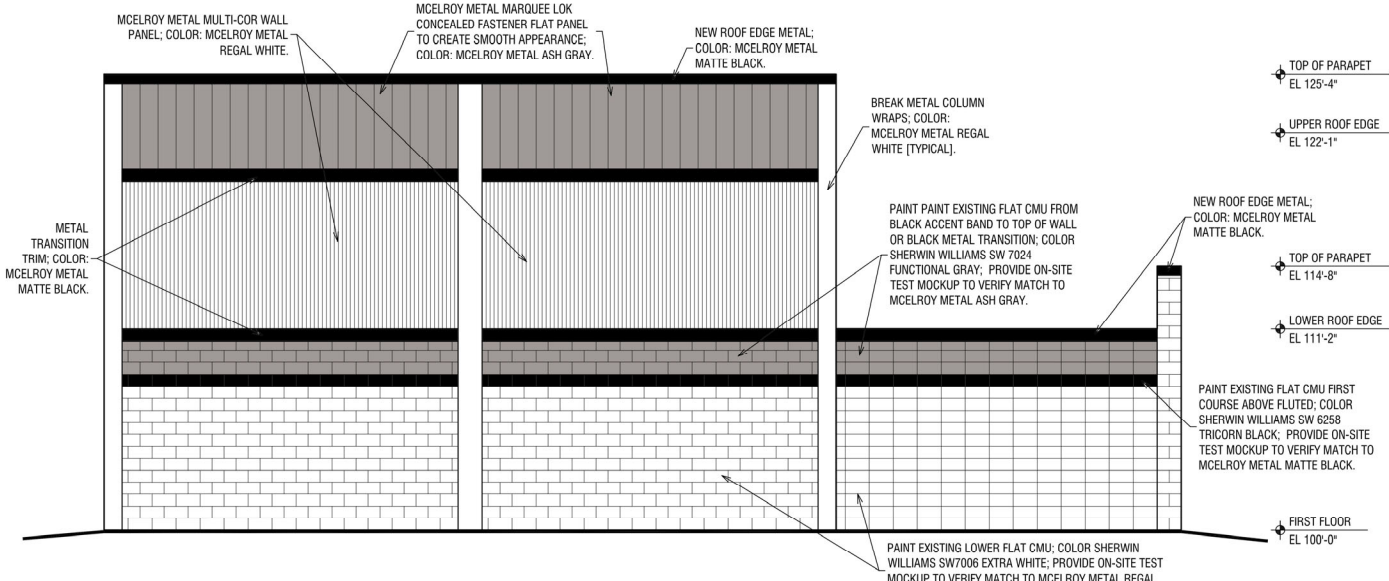
1 EAST ELEVATION
 A3.1 SCALE: 3/32" = 1'-0" [11x17]
 SCALE: 3/16" = 1'-0" [22x34]



2 WEST ELEVATION
 A3.1 SCALE: 3/32" = 1'-0" [11x17]
 SCALE: 3/16" = 1'-0" [22x34]



3 NORTH ELEVATION
 A3.1 SCALE: 3/32" = 1'-0" [11x17]
 SCALE: 3/16" = 1'-0" [22x34]



4 SOUTH ELEVATION
 A3.1 SCALE: 3/32" = 1'-0" [11x17]
 SCALE: 3/16" = 1'-0" [22x34]

PRELIMINARY NOT FOR CONSTRUCTION

BUILDING RENOVATION FOR
SHEBOYGAN FAMILY
EYE CARE
 1423 N 29TH STREET
 SHEBOYGAN, WISCONSIN, 53081

REVISIONS		
NO.	DATE	DESCRIPTION

DOCUMENT DATE
10 MARCH 2025

PROJECT NUMBER
24004-011

DRAWN BY _____ CHECKED BY _____
CDP

SHEET DESCRIPTION
BUILDING ELEVATIONS

SHEET NUMBER
A3.1

© COPYRIGHT 2025 - JCS. SCHMITT CONST. CO., INC. ALL RIGHTS RESERVED.