

I/A-1.1

1ST FLOOR

ISSUED

Issued for Plan Review - January 17, 2025

PROJECT TITLE

Jakum Site
Redevelopment

18-Unit
Townhouse

Red Earth
Development

N 15th St & Luedke Ct
Sheboygan, Wisconsin

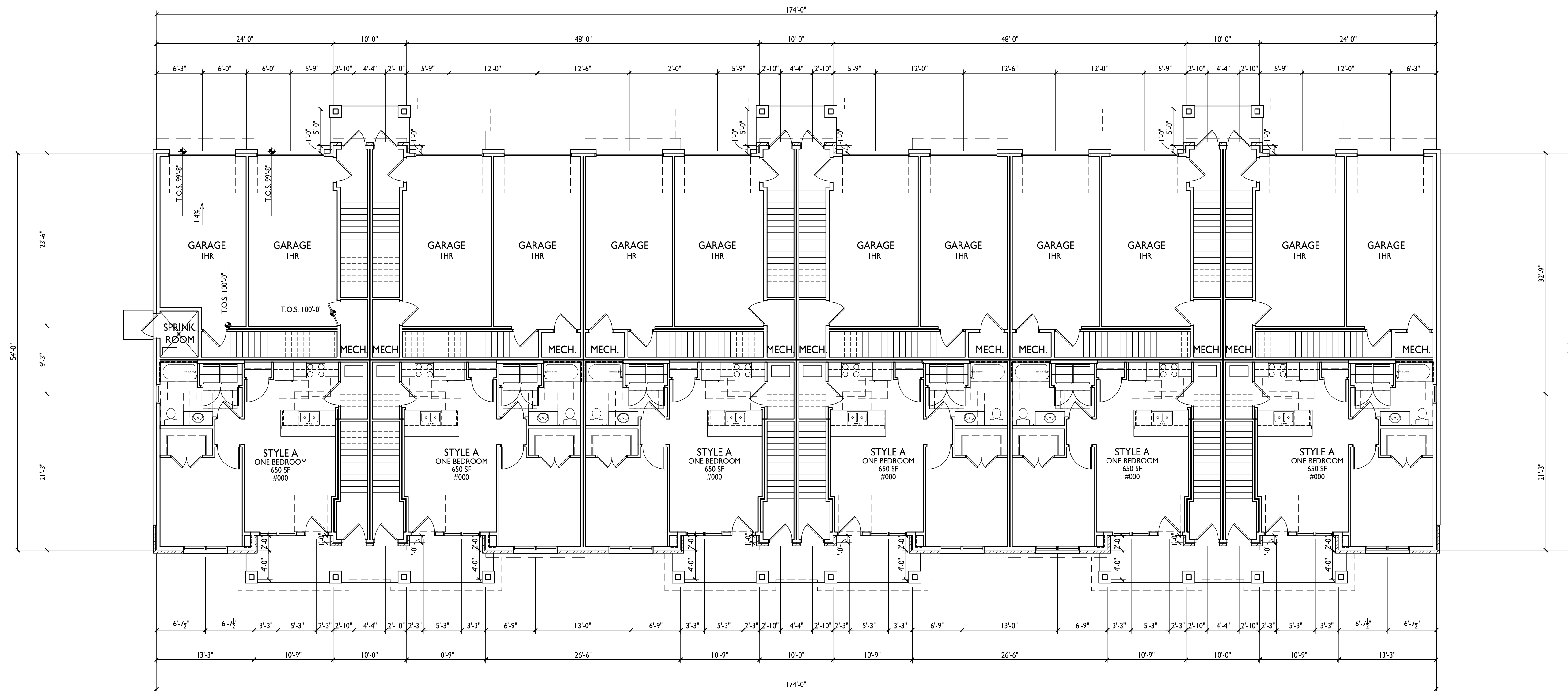
SHEET TITLE
First Floor Plan

SHEET NUMBER

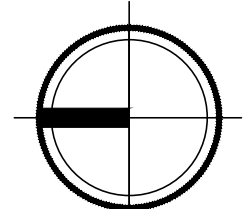
A-1.1

PROJECT NO. 2427

© Knothe & Bruce Architects, LLC



I
A-1.1 FIRST FLOOR PLAN
1/8" = 1'-0"



I/A-1.2
2ND FLOOR

ISSUED
Issued for Plan Review - January 17, 2025

PROJECT TITLE
**Jakum Site
Redevelopment**

**18-Unit
Townhouse**

**Red Earth
Development**

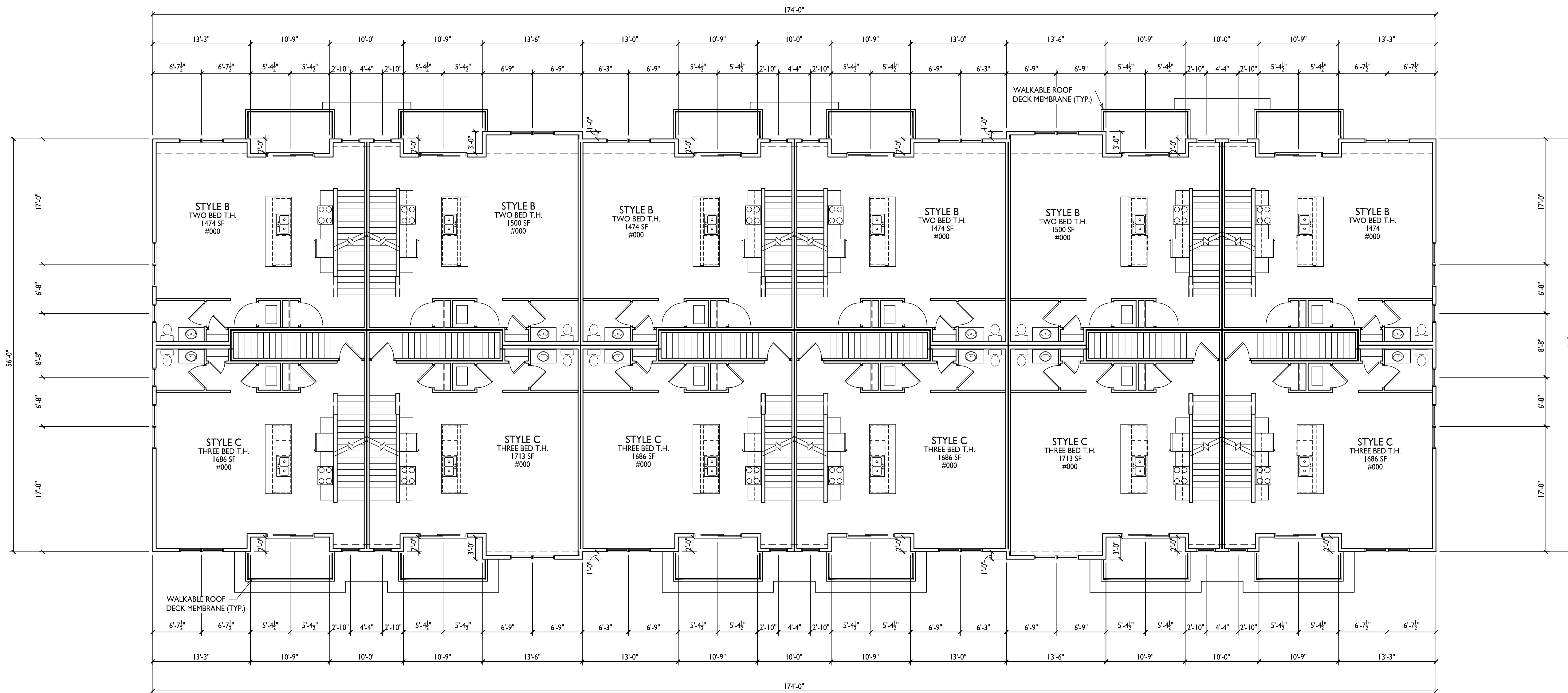
N 15th St & Luedke Ct
Sheboygan, Wisconsin

SHEET TITLE
Second Floor Plan

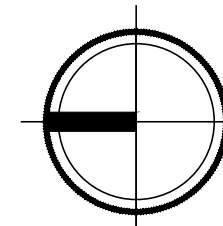
SHEET NUMBER

A-1.2

PROJECT NO. **2427**
© Knothe & Bruce Architects, LLC



1 SECOND FLOOR PLAN
A-1.2 1/8" = 1'-0"





knothe bruce
ARCHITECTS

Phone: 8401 Greenway Blvd., Suite 900
608.836.3690 Middleton, WI 53562

I/A-1.3
3RD FLOOR

ISSUED
Issued for Plan Review - January 17, 2025

PROJECT TITLE
**Jakum Site
Redevelopment**

**18-Unit
Townhouse**

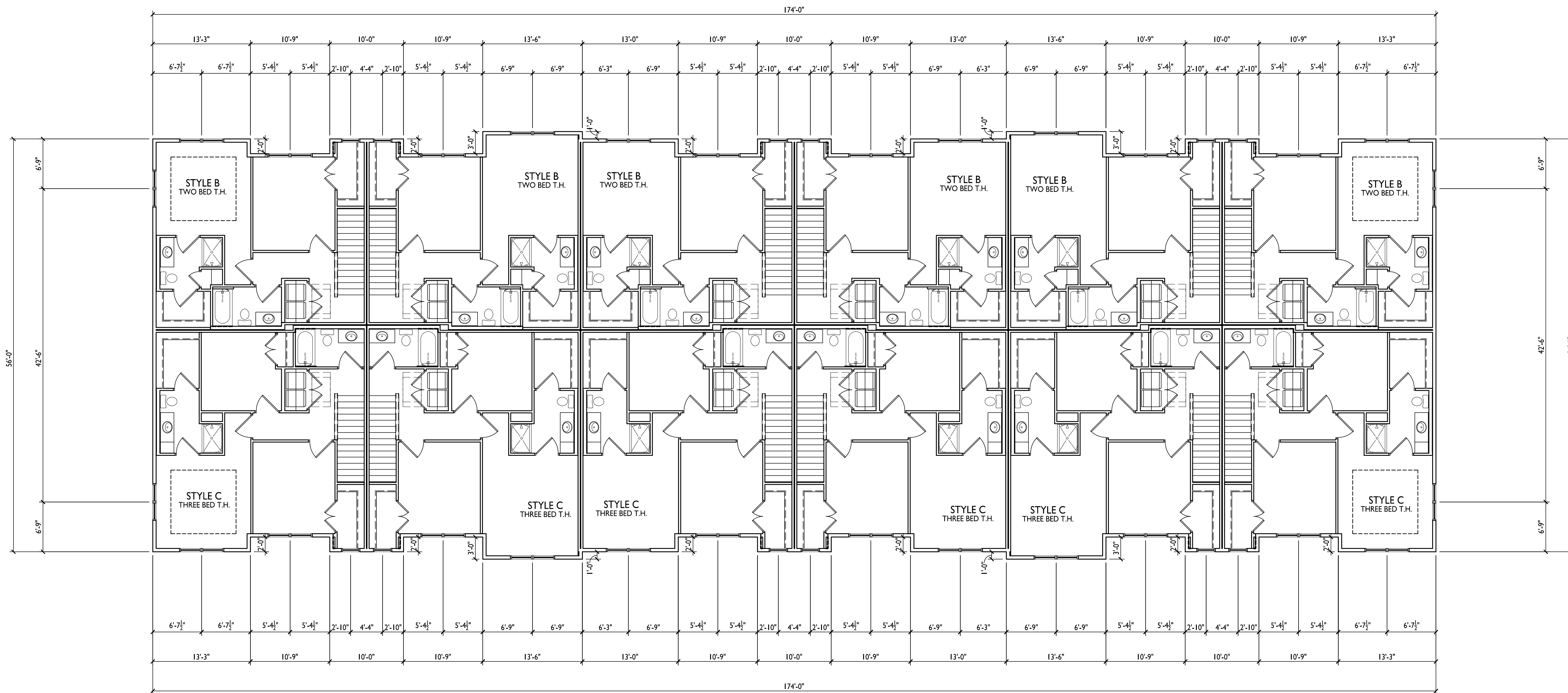
**Red Earth
Development**

N 15th St & Luedke Ct
Sheboygan, Wisconsin
SHEET TITLE
Third Floor Plan

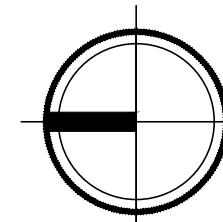
SHEET NUMBER

A-1.3

PROJECT NO. **2427**
© Knothe & Bruce Architects, LLC



I
A-1.3
THIRD FLOOR PLAN
1/8" = 1'-0"





knothe • bruce
ARCHITECTS

Phone: 8401 Greenway Blvd., Suite 900
608.836.3690 Middleton, WI 53562

I/A-1.4

ROOF PLAN

ISSUED

Issued for Plan Review - January 17, 2025

PROJECT TITLE

Jakum Site
Redevelopment

18-Unit
Townhouse

Red Earth
Development

N 15th St & Luedke Ct
Sheboygan, Wisconsin

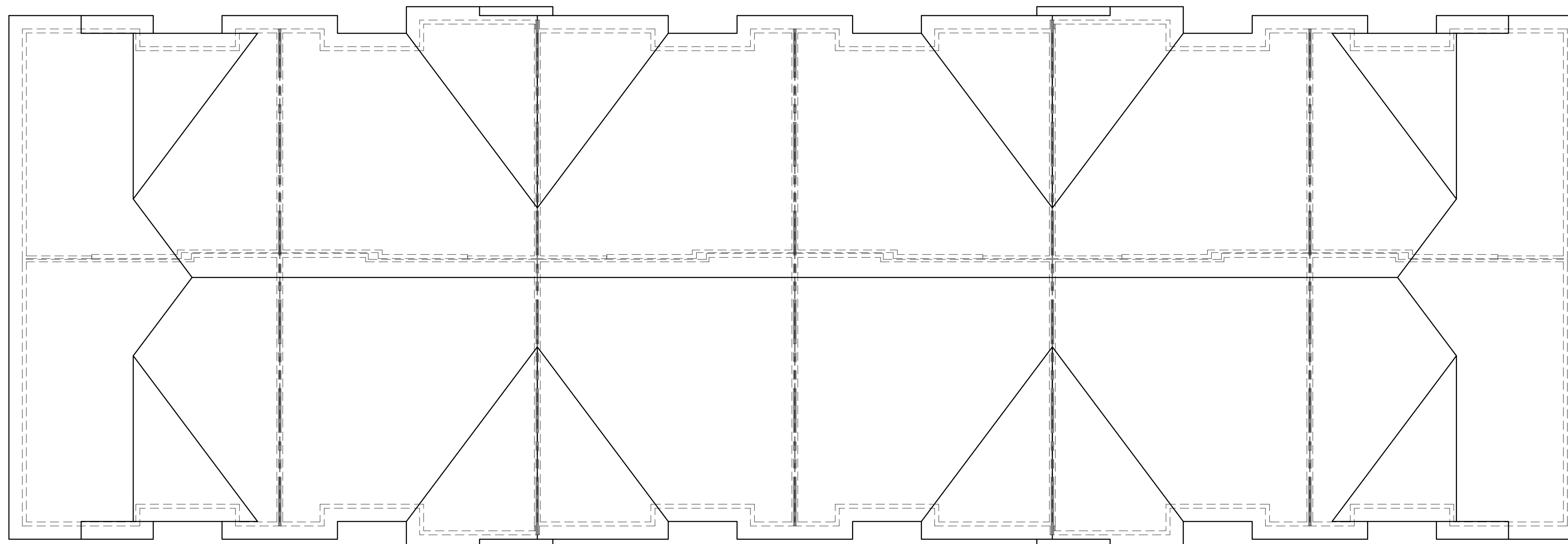
SHEET TITLE
Roof Plan

SHEET NUMBER

A-1.4

PROJECT NO. 2427

© Knothe & Bruce Architects, LLC



I
A-1.4
ROOF PLAN
1/8" = 1'-0"

