

ISSUED  
Issued for Plan Review - January 17, 2025

PROJECT TITLE  
**Jakum Site  
Redevelopment**

**15-Unit  
Townhouse**

**Red Earth  
Development**

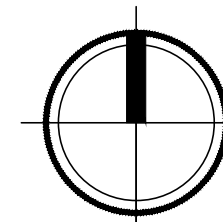
N 15th St & Luedke Ct  
Sheboygan, Wisconsin  
SHEET TITLE  
**First Floor Plan**

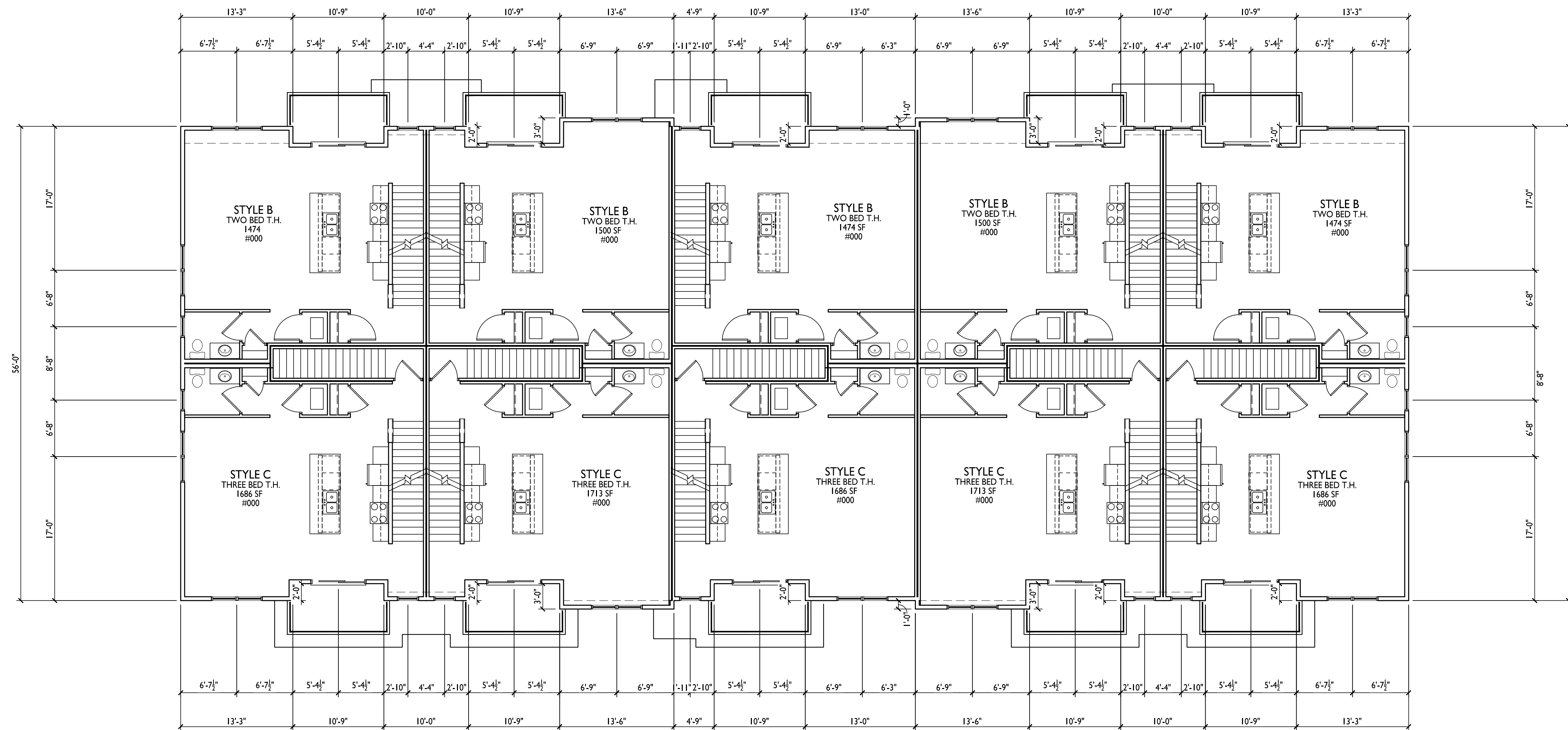
SHEET NUMBER

**A-1.1**

PROJECT NO. **2427**  
© Knothe & Bruce Architects, LLC

**1** FIRST FLOOR PLAN  
A-1.1 1/8" = 1'-0"





ISSUED  
Issued for Plan Review - January 17, 2025

PROJECT TITLE  
**Jakum Site  
Redevelopment**

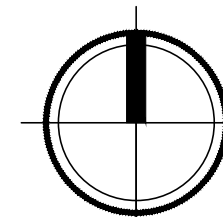
**15-Unit  
Townhouse**

**Red Earth  
Development**

N 15th St & Luedke Ct  
Sheboygan, Wisconsin  
SHEET TITLE  
**Second Floor Plan**

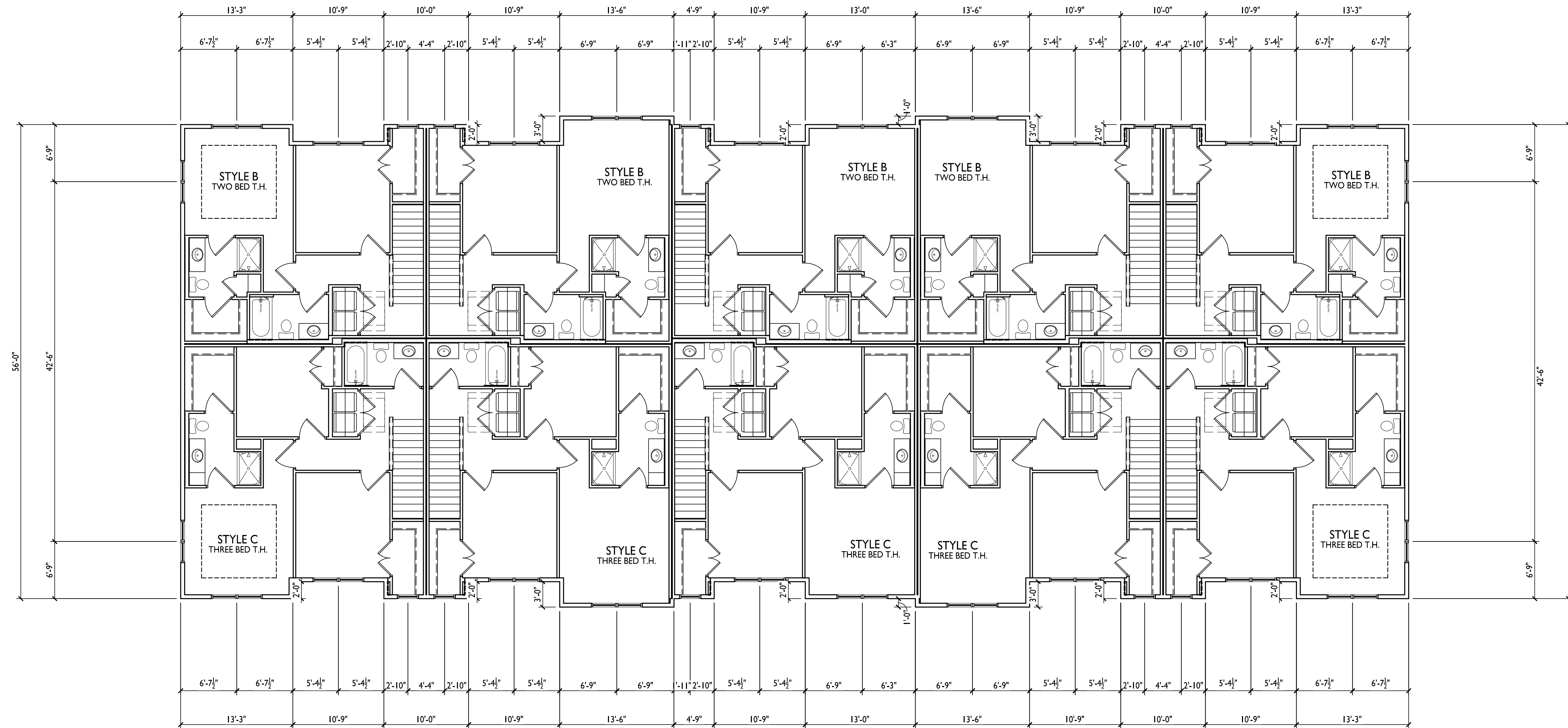
SHEET NUMBER

**1 SECOND FLOOR PLAN**  
A-1.2 1/8" = 1'-0"



**A-1.2**

PROJECT NO. **2427**  
© Knothe & Bruce Architects, LLC



ISSUED  
Issued for Plan Review - January 17, 2025

PROJECT TITLE  
**Jakum Site  
Redevelopment**

**15-Unit  
Townhouse**

**Red Earth  
Development**

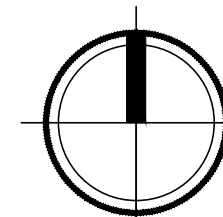
N 15th St & Luedke Ct  
Sheboygan, Wisconsin  
SHEET TITLE  
**Third Floor Plan**

SHEET NUMBER

**A-1.3**

PROJECT NO. **2427**  
© Knothe & Bruce Architects, LLC

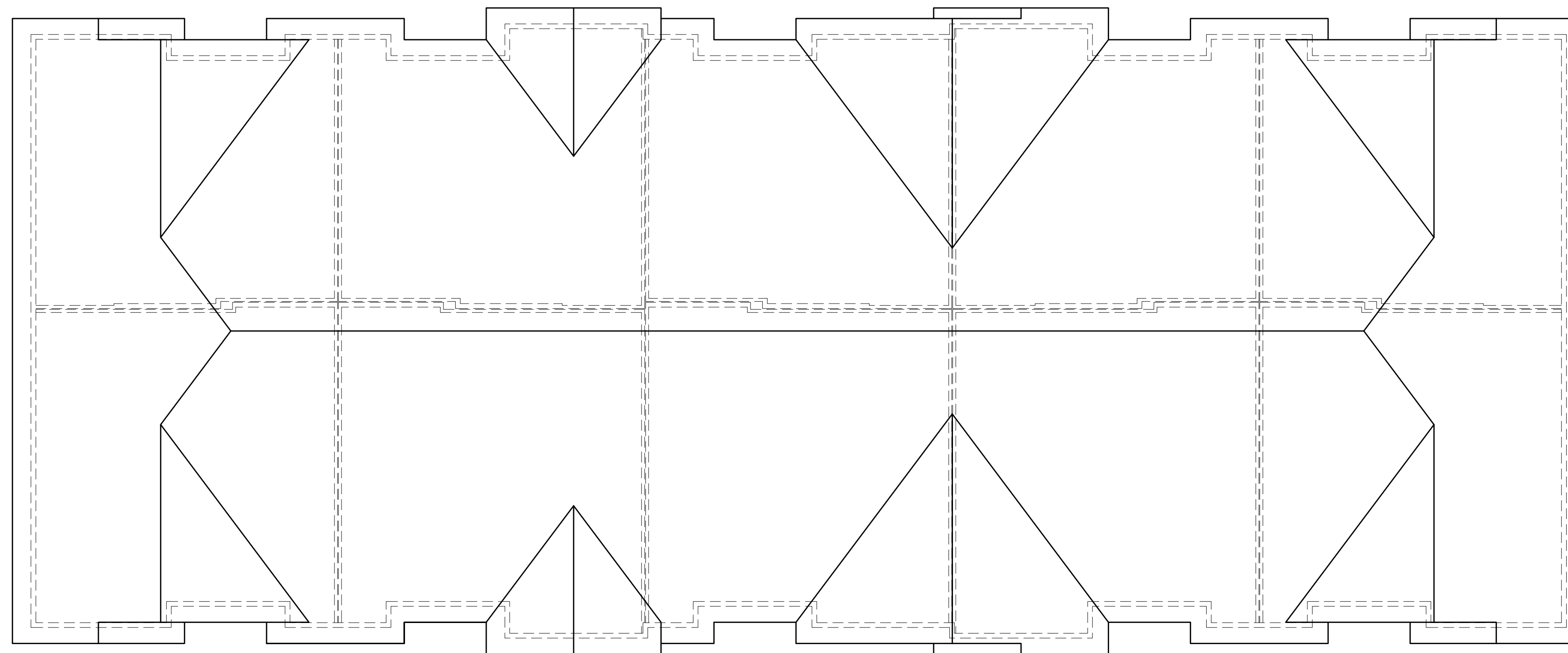
**THIRD FLOOR PLAN**  
1/8" = 1'-0"





**knothe • bruce**  
ARCHITECTS

Phone: 8401 Greenway Blvd., Suite 900  
608.836.3690 Middleton, WI 53562



ISSUED  
Issued for Plan Review - January 17, 2025

PROJECT TITLE  
**Jakum Site  
Redevelopment**

**15-Unit  
Townhouse**

**Red Earth  
Development**

N 15th St & Luedke Ct  
Sheboygan, Wisconsin  
SHEET TITLE  
**Roof Plan**

SHEET NUMBER

**A-1.4**

PROJECT NO. **2427**  
© Knothe & Bruce Architects, LLC

**1** ROOF PLAN  
A-1.4 1/8" = 1'-0"

