

Phone: 8401 Greenway Blvd., Suite 900
 608.636.3690
 Middleton, WI 53202

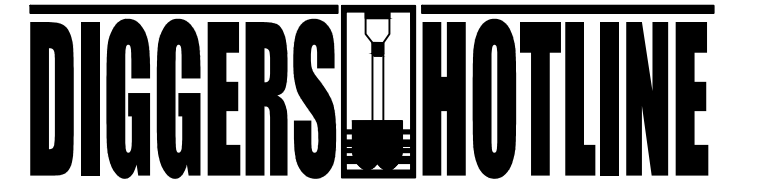


788 N. Jefferson Street, Ste 900
 Milwaukee, Wisconsin 53202
 kapurinc.com

ISSUED
 Plan Commission Set - January 17, 2025



Scale: 0 10 20 40
 Scale: 1" = 20'



Dial 811 or (800)242-8511
 www.DiggersHotline.com

KEY INDEX	
	- FOUND REBAR/PIN
	- FOUND STEEL PIPE
	- SET 5/8" REBAR
	- POST
	- CATCH BASIN
	- STORM MANHOLE
	- SANITARY MANHOLE
	- HYDRANT
	- GATE VALVE
	- POWER POLE
	- SANITARY SEWER
	- STORM SEWER
	- WATERMAIN
	- UNDERGROUND GAS
	- UNDERGROUND FIBER OPTICS
	- OVERHEAD WIRE
	- WOOD FENCE

PROJECT TITLE
 Jakum Site
 Redevelopment

Red Earth
 Development

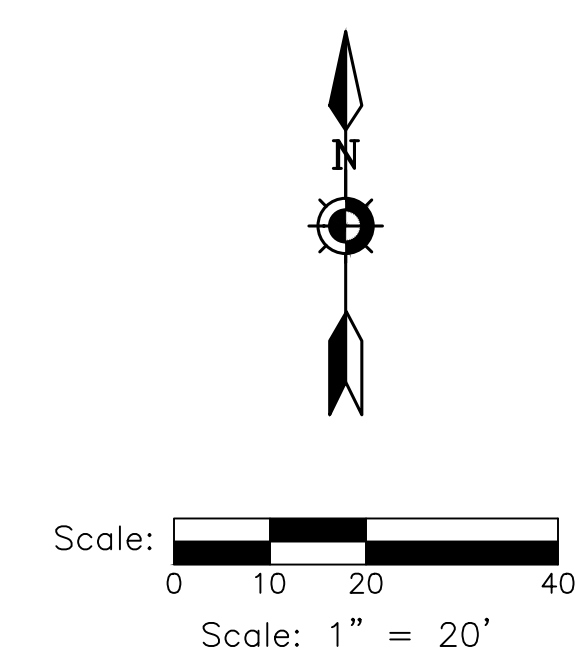
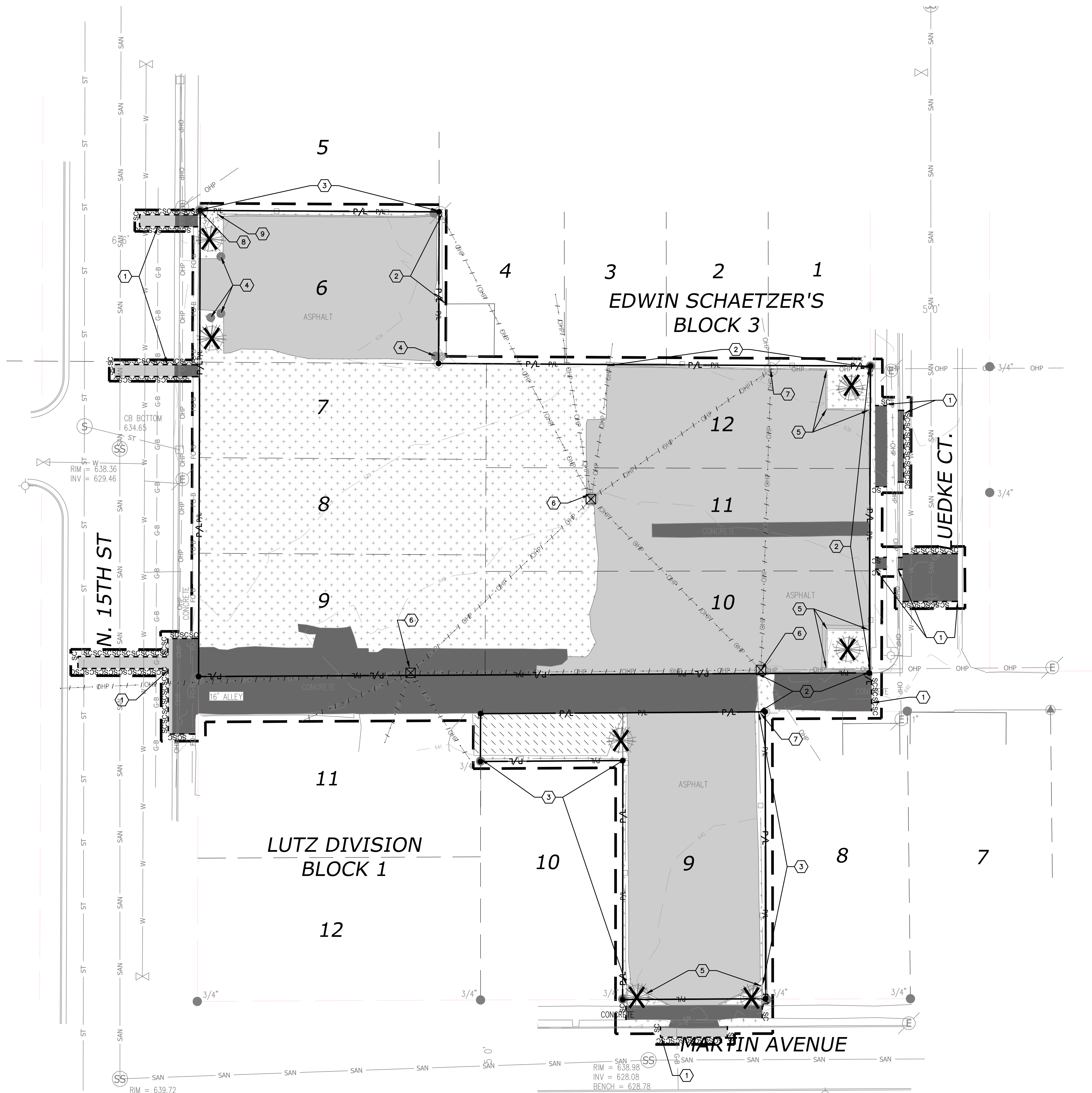
N. 15th St. & Luedke Ct.
 Sheboygan, Wisconsin

SHEET TITLE
 EXISTING
 CONDITIONS
 PLAN

SHEET NUMBER

C100

PROJECT NO. 2427



DIGGERS HOTLINE
 Dial 811 or (800)242-8511
 www.DiggersHotline.com

KEY INDEX

- PROJECT LIMITS
PROPERTY LINE
- VEGETATION TO BE REMOVED & DISPOSED OF OFFSITE. IF SUITABLE FOR REUSE, TOPSOIL TO BE STOCKPILED. UNUSED & UNSUITABLE TOPSOIL TO BE REMOVED OFFSITE. TOPSOIL THICKNESS MAY VARY. REFER TO GEOTECHNICAL REPORT.
- ASPHALT PAVEMENT & BASE MATERIAL TO BE REMOVED TO SUB-BASE & DISPOSED OF OFFSITE. PAVEMENT & BASE THICKNESS MAY VARY. REFER TO GEOTECHNICAL REPORT.
- CONCRETE & BASE MATERIAL TO BE REMOVED TO SUB-BASE & DISPOSED OF OFFSITE. CONCRETE & BASE THICKNESS MAY VARY. REFER TO GEOTECHNICAL REPORT.
- GRAVEL MATERIAL TO BE REMOVED & DISPOSED OF OFFSITE. IF SUITABLE FOR REUSE, GRAVEL TO BE STOCKPILED. UNUSED GRAVEL MATERIAL TO BE REMOVED OFFSITE. GRAVEL THICKNESS MAY VARY. REFER TO GEOTECHNICAL REPORT.
- SAWCUT FULL DEPTH
- TREES & STUMPS TO BE REMOVED
- DENOTES UTILITIES TO BE ABANDONED & REMOVED.
- UTILITY STRUCTURE REMOVAL/ABANDONMENT
- SAWCUT APPROXIMATELY 2' OF ASPHALT PAVEMENT OFF THE EDGE OF THE ROADWAY TO PROVIDE A SMOOTH EDGE FOR INSTALLATION OF NEW PAVEMENT.
- REMOVE & DISPOSE OF EXISTING WOOD FENCE INCLUDING POSTS & FOOTINGS
- EXISTING FENCE TO REMAIN. CONTRACTOR TO PROTECT THROUGHOUT CONSTRUCTION.
- REMOVE & DISPOSE OF EXISTING POST.
- REMOVE & DISPOSE OF WOODEN PLANTER BEDS
- REMOVE & RELOCATE EXISTING UTILITY POLE AND OVERHEAD WIRES. CONTRACTOR TO COORDINATE REMOVAL AND RELOCATION WITH EXISTING UTILITY OWNER.
- REMOVE & RELOCATE EXISTING GUY WIRE. CONTRACTOR TO COORDINATE REMOVAL AND RELOCATION WITH EXISTING UTILITY OWNER.
- EXISTING UTILITY POLE TO REMAIN. CONTRACTOR TO PROTECT THROUGHOUT CONSTRUCTION.
- EXISTING GUY WIRE TO REMAIN. CONTRACTOR TO PROTECT THROUGHOUT CONSTRUCTION.

ISSUED
 Plan Commission Set - January 17, 2025

PROJECT TITLE
 Jakum Site
 Redevelopment

Red Earth
 Development

N. 15th St. & Luedke Ct.
 Sheboygan, Wisconsin

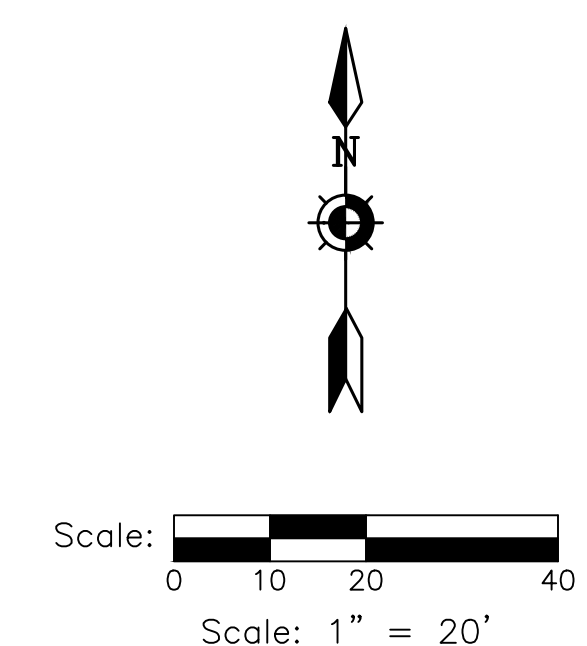
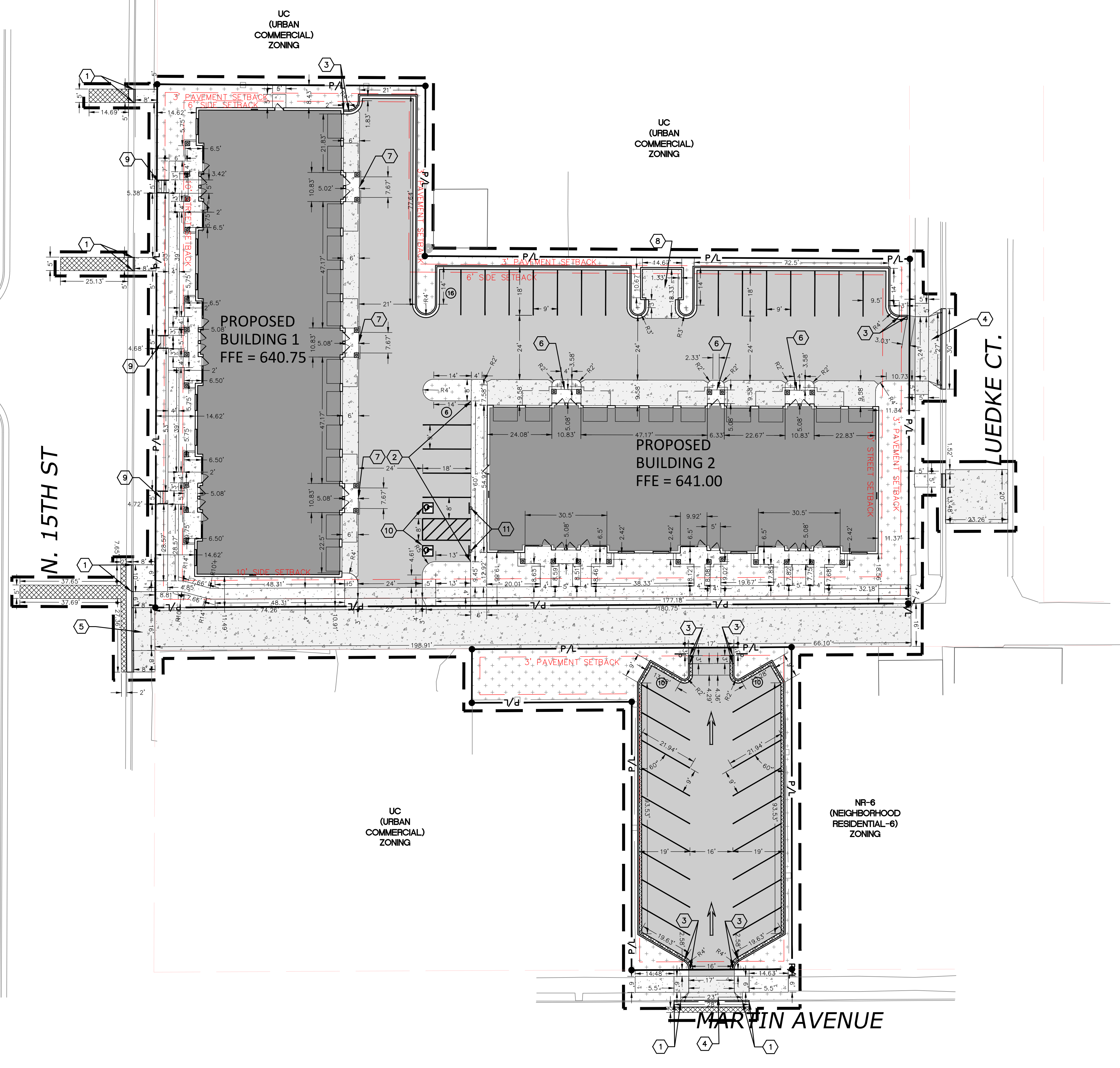
SHEET TITLE
**SITE
 DEMOLITION
 PLAN**

SHEET NUMBER

C101

PROJECT NO. 2427

PARKING SUMMARY	
REQUIRED VEHICLE SPACES - 2 SPACES FOR EACH UNIT WITH 2 OR MORE BEDROOMS AND 1-1/2 SPACES FOR EACH UNIT WITH 1 BEDROOM OR LESS - 3 BEDROOM UNITS = 11 X 2 SPACES = 22 SPACES - 2 BEDROOM UNITS = 11 X 2 SPACES = 22 SPACES - 1 BEDROOM UNITS = 11 X 1.5 SPACES = 17 SPACES	61
STANDARD SURFACE SPACES	40
ACCESSIBLE SURFACE SPACES	2
GARAGE SPACES	22
TOTAL VEHICLE SPACES	64



DIGGERS HOTLINE
 Dial 811 or (800)242-8511
 www.DiggersHotline.com

KEY INDEX	
	PROJECT LIMITS PROPERTY LINE
	AREAS DISTURBED BY CONSTRUCTION (NOT SPECIFICALLY CALLED OUT ON THE LANDSCAPE PLANS) TO BE RESTORED WITH MINIMUM 4" TOPSOIL, SEED, FERTILIZER, AND MULCH (TYP). USE SALVAGED TOPSOIL OR IMPORT TOPSOIL IF REQUIRED.
	ASPHALTIC CONCRETE
	ASPHALTIC CONCRETE TO MATCH EXISTING STREET SECTION
	CONCRETE SLAB
	HEAVY DUTY CONCRETE SLAB
	LOW-SIDE CONCRETE CURB & GUTTER 18" BARRIER UNLESS OTHERWISE NOTED
	HIGH-SIDE CONCRETE CURB & GUTTER 18" BARRIER UNLESS OTHERWISE NOTED
	DEPRESSED CONCRETE CURB & GUTTER 18" DEPRESSED UNLESS OTHERWISE NOTED
	30" BARRIER CURB & GUTTER
	DEPRESSED INTEGRAL CURB
	TRANSITION FROM 18" BARRIER CURB & GUTTER TO ZERO FACE CURB
	CONCRETE DRIVEWAY APRON
	CONCRETE DRIVEWAY APRON
	RAISED CONCRETE STEP
	RAISED CONCRETE STEP
	CMU DUMPSTER ENCLOSURE. REFER TO ARCHITECTURAL PLANS FOR MORE INFORMATION.
	CONCRETE STEPS WITH HANDRAILS
	ACCESSIBLE PARKING SYMBOL
	ACCESSIBLE SIGN

kb2
knothe • bruce
 ARCHITECTS
 Phone: 8401 Greenway Blvd., Suite 0
 908 836 3690 0
 5 3 5 6 2
 Middleton, WI

kapur
 788 N. Jefferson Street, Ste 900
 Milwaukee, Wisconsin 53202
 kapurinc.com

ISSUED
 Plan Commission Set - January 17, 2025

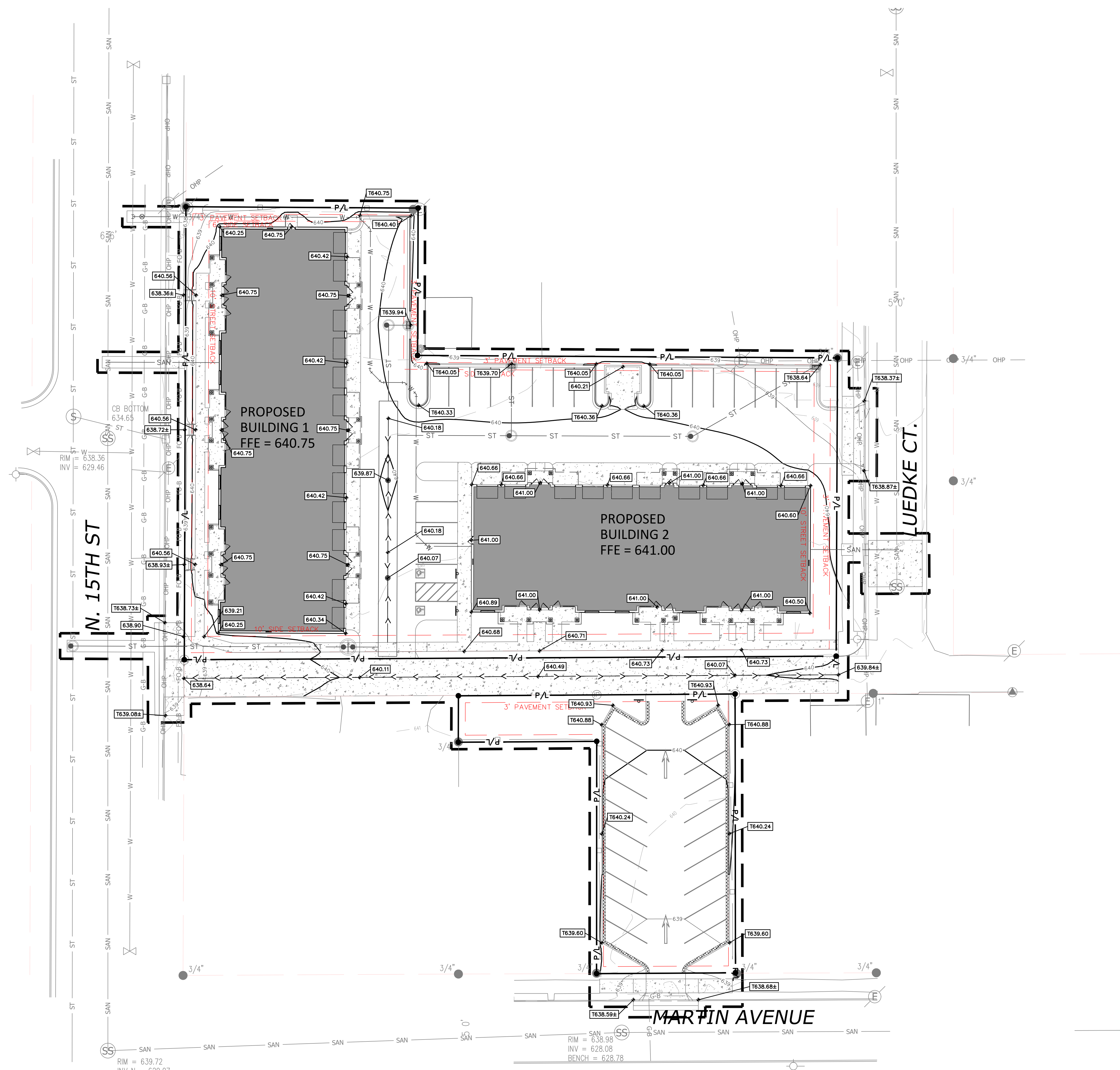
PROJECT TITLE
 Jakum Site
 Redevelopment
 Red Earth
 Development

N. 15th St. & Luedke Ct.
 Sheboygan, Wisconsin
 SHEET TITLE
 SITE LAYOUT
 PLAN

SHEET NUMBER

C102

PROJECT NO. 2427
 © Knothe & Bruce Architects, LLC



N. 15TH ST

LUEDKE CT.

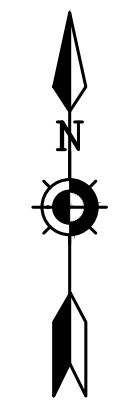
PROPOSED BUILDING 2
FFE = 641.00

PROPOSED BUILDING 1
FFE = 640.75

MARTIN AVENUE

RIM = 639.72
INV N = 629.07

RIM = 638.98
INV = 628.08
BENCH = 628.78



Scale: 0 10 20 40
Scale: 1" = 20'



Dial 811 or (800)242-8511
www.DiggersHotline.com

KEY INDEX

- PROJECT LIMITS
- PROPERTY LINE
- EXISTING CONTOUR MINOR
- EXISTING CONTOUR MAJOR
- PROPOSED CONTOUR MINOR
- PROPOSED CONTOUR MAJOR
- SWALE
- PROPOSED SPOT GRADE
- MATCH EXISTING GRADE
- PROPOSED TOP OF CURB GRADE, REFER TO SITE LAYOUT PLANS FOR MORE INFORMATION. GUTTER IS 6" BELOW TOP OF CURB UNLESS OTHERWISE NOTED.
- MATCH EXISTING TOP OF CURB GRADE



Phone: 8401 Greenway Blvd., Suite 900
608.636.3690 Mirlleton, WI 53122



788 N. Jefferson Street, Ste 900
Milwaukee, Wisconsin 53202
kapurinc.com

ISSUED
Plan Commission Set - January 17, 2025

PROJECT TITLE
Jakum Site
Redevelopment

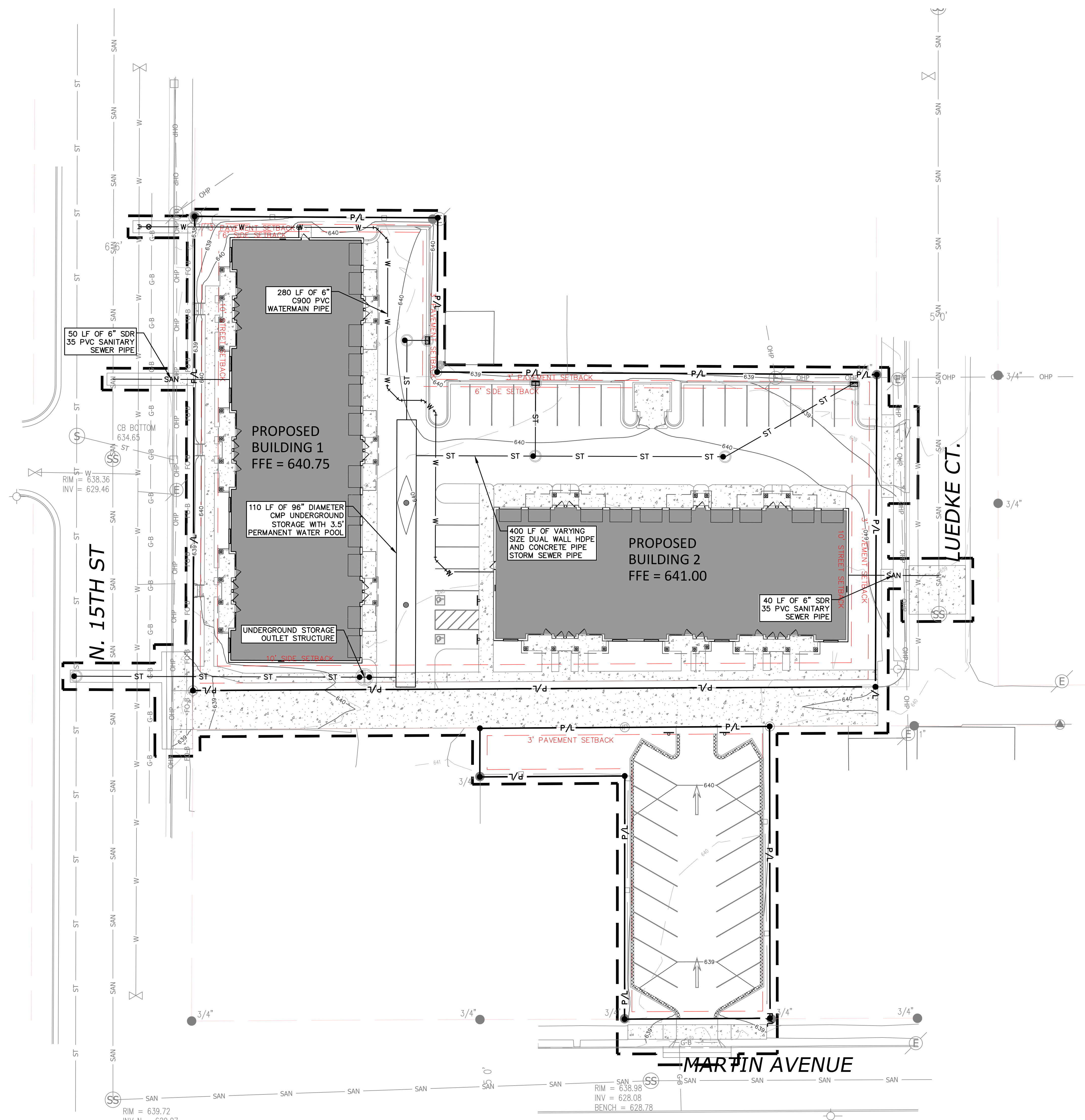
Red Earth
Development


N. 15th St. & Luedke Ct.
Sheboygan, Wisconsin
SHEET TITLE
SITE GRADING
PLAN

SHEET NUMBER

C104

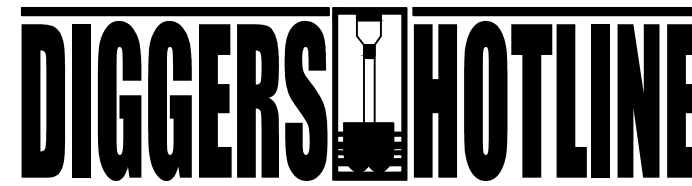
PROJECT NO. 2427





Scale: 1" = 20'

0 10 20 40



Dial 811 or (800)242-8511

www.DiggersHotline.com

UTILITY NOTES

CAUTION KNOWN UTILITY AND POTENTIAL CONFLICT EXIST WITH EXISTING UNDERGROUND UTILITIES. PRIOR TO UTILITY INSTALLATION, CONTRACTOR TO EXCAVATE AND EXPOSE EXISTING UTILITIES, VERIFY LOCATIONS AND ELEVATIONS, AND CONTACT ENGINEER IF CONFLICTS EXIST WITH PROPOSED CONSTRUCTION AND EXISTING UNDERGROUND UTILITIES..

- PER PROJECT SPECIFICATIONS AND THE STANDARD SPECIFICATIONS FOR SEWER AND WATER CONSTRUCTION IN WISCONSIN, THE POINT OF COMMENCEMENT FOR THE LAYING OF SEWER PIPE SHALL BE AT THE LOWEST POINT IN THE PROPOSED SEWER LINE. THE PIPE SHALL BE LAID WITH THE BELL END OF THE BELL AND SPOT PIPE, OR WITH THE RECEIVING GROOVE END OF THE TONGUE AND GROOVE PIPE, POINTING UPGRADE. WHEN A NEW SEWER IS TO BE CONNECTED TO AN EXISTING SEWER NOT TERMINATING IN A MANHOLE, THE CONTRACTOR SHALL UNCOVER THE EXISTING SEWER TO ALLOW ANY ADJUSTMENTS IN LINE AND GRADE TO BE MADE BEFORE PIPE IS LAID.
- THE UNDERGROUND AND OVERHEAD UTILITY INFORMATION AS SHOWN HEREON IS BASED, IN PART, UPON INFORMATION FURNISHED BY UTILITY COMPANIES, LOCAL MUNICIPALITY, PROPERTY OWNER, AND DIGGERS HOTLINE. WHILE THIS INFORMATION IS BELIEVED TO BE RELIABLE, ITS ACCURACY AND COMPLETENESS CANNOT BE GUARANTEED NOR CERTIFIED TO.
- GENERAL CONTRACTOR OR THEIR SUB CONTRACTORS SHALL APPLY FOR AND OBTAIN ALL THEIR REQUIRED PERMITS AND APPROVALS PRIOR TO THE START OF THEIR WORK. CONSULT WITH AND OBTAIN FROM ENGINEER COPIES OF ENGINEERING DESIGN APPROVAL PERMITS, INCLUDING BUT NOT LIMITED TO WDR, STATE OR LOCAL PLUMBING, WDOT, COUNTY, AND STORM WATER MANAGEMENT.
- GENERAL CONTRACTOR OR THEIR SUB CONTRACTORS SHALL CONTACT DIGGERS HOTLINE TO ALLOW THEM SUFFICIENT TIME TO LOCATE EXISTING UTILITIES PRIOR TO COMMENCEMENT OF WORK.
- GENERAL CONTRACTOR OR THEIR SUB CONTRACTORS ARE RESPONSIBLE FOR COORDINATING THEIR WORK WITH ALL OTHER CONTRACTORS.
- GENERAL CONTRACTOR OR THEIR SUB CONTRACTORS ARE RESPONSIBLE FOR VERIFYING OWNERSHIP OF AND COORDINATING THE DEMOLITION AND/OR RELOCATION OF ALL EXISTING UTILITIES FROM EXISTING BUILDINGS AND WITHIN THE PROJECT LIMITS, INCLUDING BUT NOT LIMITED TO ELECTRICAL/FIBER OPTIC/TELEPHONE/CABLE/GAS/WATER/SANITARY/STORM. DEMOLITION OF THIS UTILITY WORK MUST BE IN ACCORDANCE WITH ALL STATE, FEDERAL, & LOCAL REGULATIONS.
- FOR ALL WORK, GENERAL CONTRACTOR OR THEIR SUB CONTRACTORS ARE RESPONSIBLE FOR REVIEWING BID DOCUMENTS, VERIFYING THE VERTICAL AND HORIZONTAL LOCATION OF ALL EXISTING UTILITIES WITHIN THE PROJECT LIMITS, AND INCLUDE IN THEIR CONTRACT THE RELOCATION OF SAID UTILITIES (NOTED OR NOT ON THE BID DOCUMENTS) AS NECESSARY TO PROVIDE PROPER DEPTH/CLEARANCE PER UTILITY OWNER'S REQUIREMENTS.

KEY INDEX

	PROJECT LIMITS
	PROPERTY LINE
	STORM MANHOLE
	STORM CATCH BASIN WITH CURB BOX FRAME & GRATE
	UNDERGROUND STORAGE RISER
	WATER MAIN TEE
	WATER MAIN VALVE
	STORM SEWER
	SANITARY SEWER
	WATER MAIN

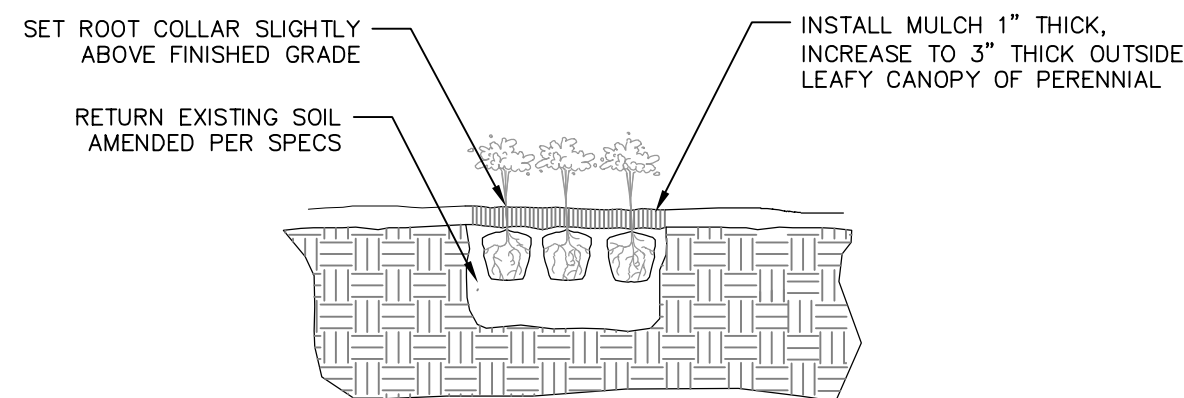
Plant Schedule						
Code	Scientific Name	Common Name	Quantity	Spacing	Install Size	Mature Size (Height/Spread)
Shade and Tall Trees: (Install in accordance with detail 3/L201)						
GIBPS	Ginkgo biloba 'Princeton Sentry'	Princeton Sentry Ginkgo (male)	2	Per Plan	2" caliper B&B	40'/15'
GLTIS	Gleditsia tricanthos 'Shademaster' PP1,515	Shademaster Honeylocust	2	Per Plan	2" caliper B&B	60'/35'
GYDIE	Gymnocladus dioicus 'Espresso'	Espresso Kentucky Coffee Tree	1	Per Plan	2" caliper B&B	50'/35'
QUBBM	Quercus bicolor 'Bonnie and Mike'	Beacon Swamp White Oak	1	Per Plan	2" caliper B&B	35'/15'
ULFR	Ulmus 'Frontier'	Frontier Elm	2	Per Plan	2" caliper B&B	40'-50'/25'-35'
Medium and Low Trees: (Install in accordance with detail 3/L201)						
SYRIS	Syringa reticulata 'Ivory Silk'	Ivory Silk Japanese Tree Lilac	3	Per Plan	1.5" caliper B&B	25'/15'
Evergreen Trees: (Install in accordance with detail 4/L201)						
JUCTR	Juniperus chinensis 'Trautman'	Trautman Juniper	12	Per Plan	4' tall B&B	12'/4'
Deciduous Shrubs: (Install in accordance with detail 5/L201)						
DISCS	Diervilla sessilifolia 'LPDC Podras' PP19,391	Cool Splash Dwarf Bush Honeysuckle	10	Per Plan	24" tall pot	30"/30"-54"
HYPAL	Hydrangea paniculata 'LVOBO' PP22,782	Bobo Hydrangea	17	Per Plan	24" tall pot	3'/3'-4'
HYPAL	Hydrangea paniculata 'Jane'	Little Lime Hydrangea	3	Per Plan	18" tall pot	3'-5'/3'-5'
RHARG	Rhus aromatica 'Gro-Low'	Gro-Low Sumac	48	Per Plan	18" spread pot	2'-3'/6'-8'
SPFRA	Spiraea x fritschiana 'JN Select A'	Pink-a-licious Fritsch Spirea	47	Per Plan	18" tall pot	2'-3'/2'-3'
SYMEP	Syringa meyeri 'Palbin'	Meyer Lilac (Dwarf Korean Lilac)	2	Per Plan	36" tall pot	4'-5'/5'-7'
Evergreen Shrubs: (Install in accordance with detail 5/L201)						
TAMEV	Taxus x media 'Everlow'	Everlow Yew	3	Per Plan	18" spread pot	2'-3'/4'-5'
Perennials: (Install in accordance with detail 6/L201)						
ALSPB	Allium x 'Summer Peek-a-Boo'	Summer Peek-a-Boo Globe Lily	50	Per Plan	#1 cont.	8"-12"/18"-24"
BECOW	Bergenia cordifolia 'Winterglut'	Winter Glow Bergenia	2	Per Plan	#1 cont.	12"-18"/12"-18"
CAAC	Calamagrostis x acutiflora Karl Foerster	Karl Foerster Reed Grass	61	Per Plan	#1 cont.	5'-6'/18"-24"
CABRA	Calamagrostis brachytricha	Fall Blooming Feather Reed Grass	26	Per Plan	#1 cont.	36"-60"/24"
HEHR	Hemerocallis 'Happy Returns'	Happy Returns Daylily	30	Per Plan	#1 cont.	12"-18"/16"-24"
NEJW	Nepeta x 'Junior Walker'	Junior Walker Catmint	34	Per Plan	#1 cont.	15"-18"/30"-36"
PANO	Panicum virgatum 'Northwinds'	Northwinds Switch Grass	50	Per Plan	#1 cont.	4'-5'/24"-30"
SEAF	Sedum x 'Autumn Fire'	Autumn Fire Sedum	11	Per Plan	#1 cont.	18"-24"/24"

NOTE: Plant quantities indicated in the plant schedule are for convenience only. Installation contractor is responsible for verifying plant count on the landscape plan. When discrepancies between the plant schedule, labels and the landscape plan occur, the quantity drawn on the landscape plan shall be the official quantity.

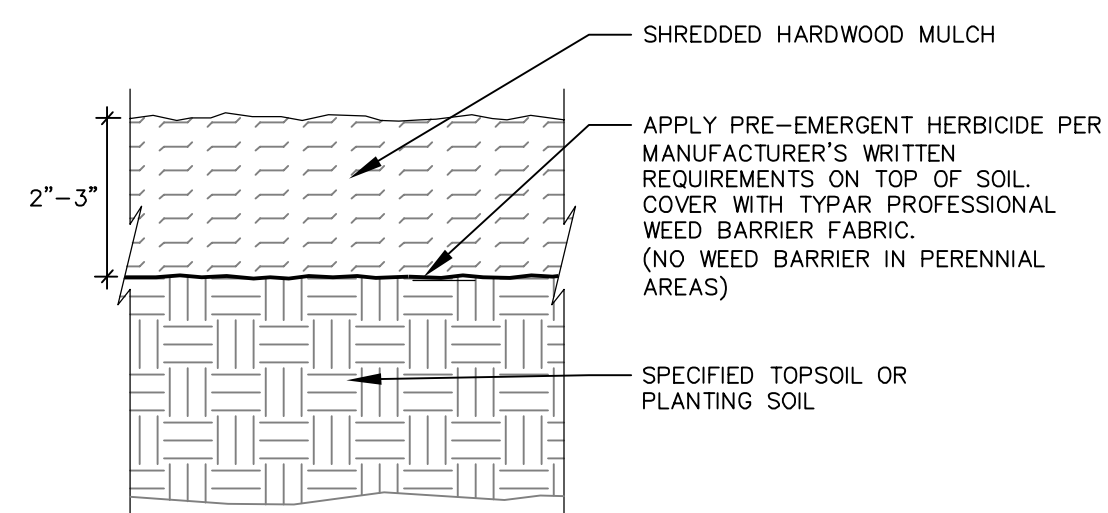
1 PLANT SCHEDULE
L201 REFER TO SPECIFICATIONS FOR ADDITIONAL INFORMATION

- ALL PLANT MATERIAL SHALL BE OBTAINED FROM A NURSERY LOCATED IN ZONE 5, CONFORM TO APPLICABLE REQUIREMENTS OF THE CURRENT EDITION OF THE AMERICAN STANDARD FOR NURSERY STOCK, AND BOTANICAL NAMES SHALL BE ACCORDING TO THE CURRENT EDITION OF "STANDARDIZED PLANT NAMES" PREPARED BY THE AMERICAN JOINT COMMITTEE ON HORTICULTURE NOMENCLATURE.
- CONTRACTOR TO PROVIDE TO THE LANDSCAPE ARCHITECT SAMPLES OF ALL WOOD AND MINERAL/STONE MULCHES OR OTHER GROUND COVER MATERIALS FOR APPROVAL PRIOR TO INSTALLATION.
- SHREDDED HARDWOOD MULCH TO BE FRESHLY ACQUIRED SHREDDED HARDWOOD MULCH. DOUBLE MILLED, EXCESSIVE DIRT AND DUST LIKE MATERIAL OR OLD MATERIAL IS NOT ACCEPTABLE.
- LANDSCAPE EDGING TO BE ALUMINUM EDGING. REFER TO SPECIFICATION 32 93 00 PLANTS FOR ADDITIONAL INFORMATION.
- ALL PLANTING AREAS TO RECEIVE A 2 TO 3-INCH THICK LAYER OF SHREDDED HARDWOOD MULCH OVER TYPAR PROFESSIONAL WEED BARRIER FABRIC WITH EDGING. EDGING TO BE INSTALLED BETWEEN DIFFERENT TYPES OF MULCHES, BETWEEN MULCHES AND TURF, AND/OR WHERE SPECIFICALLY NOTED ON THE PLAN. REFER TO SPECIFICATION 32 93 00 PLANTS FOR ADDITIONAL INFORMATION.
- INSTALL SHOVEL CUT EDGE AROUND ALL INDIVIDUAL TREES AND SHRUBS IN LAWN AREAS AND ALONG PAVEMENT WHERE PLANTING AREAS ADJUT TO PREVENT SHREDDED HARDWOOD MULCH FROM SPILLING OUT OF PLANTING AREA.
- CONTRACTOR RESPONSIBLE FOR MAINTENANCE OF PLANT MATERIAL FOR 90 DAYS FROM INSTALLATION, INCLUDING WATERING, WEEDING, ETC. CONTRACTOR IS RESPONSIBLE FOR MAINTENANCE OF SEEDING AREAS FOR 60 DAYS FROM INSTALLATION, INCLUDING WATERING, WEEDING, ETC. CONTRACTOR TO PROVIDE AND REVIEW MAINTENANCE INSTRUCTIONS WITH THE OWNER PRIOR TO THE COMPLETION OF THESE MAINTENANCE PERIODS. REFER TO SPECIFICATIONS FOR ADDITIONAL REQUIREMENTS.
- CLEANLY PRUNE AND REMOVE DAMAGED BRANCHES, DEAD WOOD, AND ROOTS IMMEDIATELY PRIOR TO PLANTING. DO NOT CUT LEADERS OR LEAVE "V" CROTCHES OR DOUBLE LEADERS UNLESS A MULTI-STEM TREE IS SPECIFIED.
- REMOVE BURLAP, WIRE BASKET, ROPE, TWINE, AND ALL SYNTHETIC MATERIAL FROM THE ROOTS, TRUNK, OR CROWN OF PLANT.
- REMOVE EXCESS SOIL ABOVE ROOT COLLAR.
- PLANT TREES AND SHRUBS SO THAT THE ROOT COLLAR IS 2" ABOVE FINISHED GRADE OR SEVERAL INCHES ABOVE GRADE IF PLANT IS INSTALLED IN POOR SOILS.
- PLANT TREES AND SHRUBS WITH SAME ORIENTATION AS WHEN HARVESTED FROM THE NURSERY OR TO SHOWCASE THE MOST AESTHETIC VIEW.
- PLANT ALL TREES WITH THREE SLOW RELEASE FERTILIZER PACKETS, SPACED EQUIDISTANT AROUND THE EDGE OF THE ROOT BALL.
- PLANT ALL SHRUBS WITH ONE SLOW RELEASE FERTILIZER PACKET, PLACED BELOW THE ROOTING SYSTEM.
- WATER AND TAMP BACKFILL AND ROOTS OF ALL NEWLY SET PLANT MATERIAL SO THE SOIL AND ROOTS ARE THOROUGHLY SOAKED AND AIR POCKETS ARE REMOVED.
- FOR INDIVIDUAL TREES & SHRUBS PLANTED IN TURF AREAS, PROVIDE CONTINUOUS 3" SOIL SAUCER TO CONTAIN WATER & MULCH (TREES ON SLOPES SHALL BE SAUCERED ON THE DOWNHILL SIDE)
- INSTALL 3" THICK SHREDDED HARDWOOD MULCH RING 3'-0" DIA. FOR DECIDUOUS TREES AND ALL INDIVIDUAL SHRUBS IN LAWN AREAS, 5'-0" DIA. FOR EVERGREEN TREES. KEEP MULCH 2" AWAY FROM TRUNKS.
- STAKING - ONLY STAKE EVERGREEN TREES 5'-0" OR GREATER IN HEIGHT OR TREES THAT ARE UNABLE TO REMAIN UPRIGHT AFTER PLANTING. TREES WILL BECOME STRONGER FASTER WHEN THE TOP 2/3 OF THE TREE IS FREE TO SWAY. DO NOT ATTACH WIRE DIRECTLY TO TREES OR THROUGH HOSES - UTILIZE GROMMETED, SYNTHETIC STRAPS AT LEAST 2" WIDE AROUND THE TREE, ATTACH STRAPPING TO STAKE WITH WIRE. STAKE ONLY WHEN NECESSARY. STAKES SHOULD BE DRIVEN DEEPLY INTO THE GROUND TO PREVENT DISLODGING. CHECK AT LEAST EVERY THREE MONTHS FOR BINDING OR OTHER PROBLEMS. STAKES AND TIES SHOULD BE REMOVED SIX MONTHS TO ONE YEAR AFTER PLANTING.
- LAWN AREAS BEING CONVERTED TO PLANTING BEDS SHALL HAVE THE LAWN KILLED AND ENTIRELY REMOVED INCLUDING ROOTS. REPLACE THE REMOVED SOIL WITH IMPORTED TOPSOIL. DO NOT TILL THE EXISTING LAWN INTO THE SOIL.
- PAVED AREAS BEING CONVERTED TO PLANTING BEDS SHALL HAVE ALL STONE AGGREGATE BASE DOWN TO SUBGRADE REMOVED AND REPLACED WITH PLANTING SOIL.
- STONE MULCH TO BE 3/4-INCH RAVENS BLACK DECORATIVE STONE CHIP FROM HALQUIST STONE OR APPROVED EQUIVALENT. CONTRACTOR TO CONTACT HALQUIST STONE N51 W23563 LISBON ROAD SUSSEX, WI 53089 TELEPHONE (262)246-9000 EMAIL: INFO@HALQUISTSTONE.COM
- REFER TO SPECIFICATIONS 32 93 00 PLANTS AND 32 92 00 TURF AND GRASSES FOR ADDITIONAL INFORMATION.

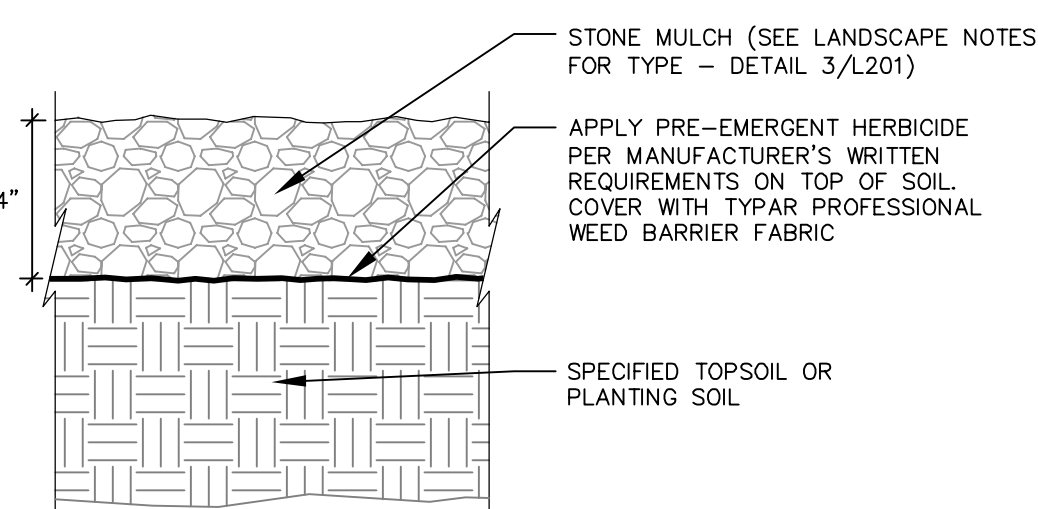
2 LANDSCAPE NOTES
L201 REFER TO SPECIFICATIONS



6 PERENNIAL PLANTING
L201 N.T.S.

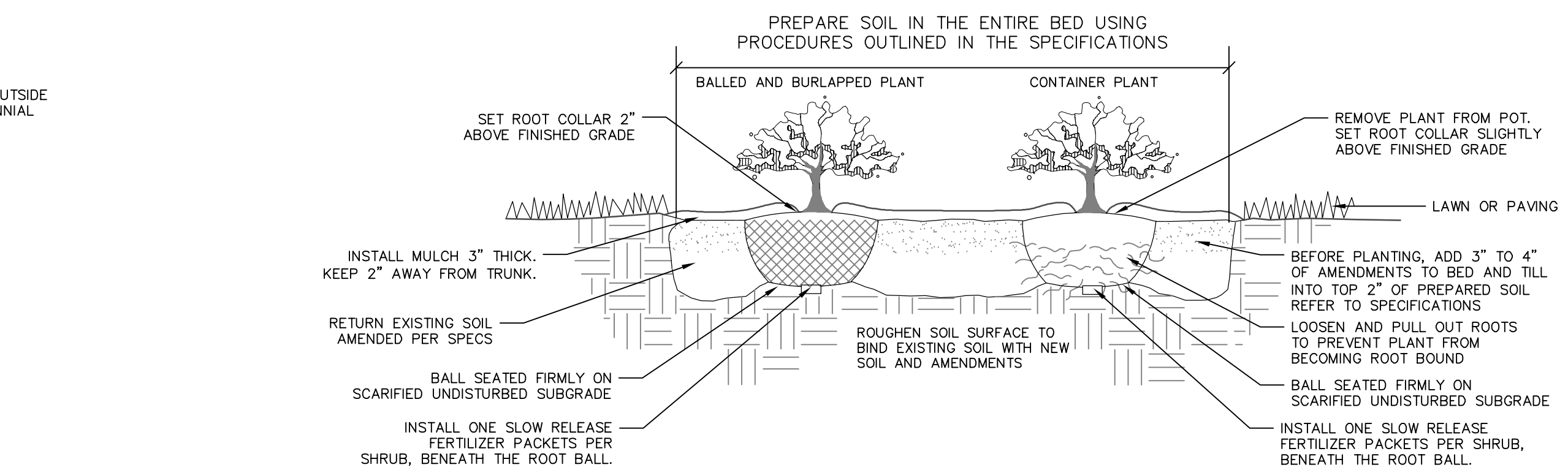


7 SHREDDED HARDWOOD MULCH SECTION
L201 N.T.S.

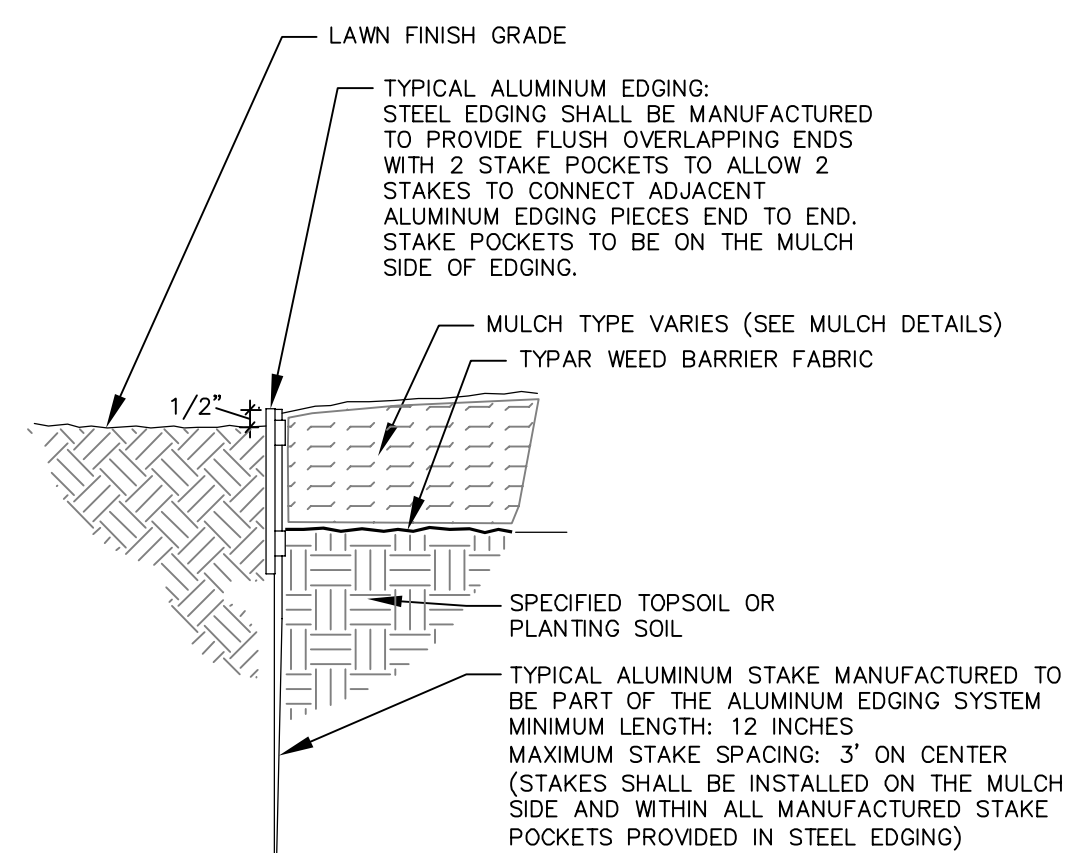


NOTE:
1. FINAL GRADE OF STONE MULCH SHALL BE FLUSH WITH TOP OF PAVEMENT OR TOP OF CURB WHEN ADJACENT TO PAVEMENT OR CURBS.

8 STONE MULCH SECTION
L201 N.T.S.

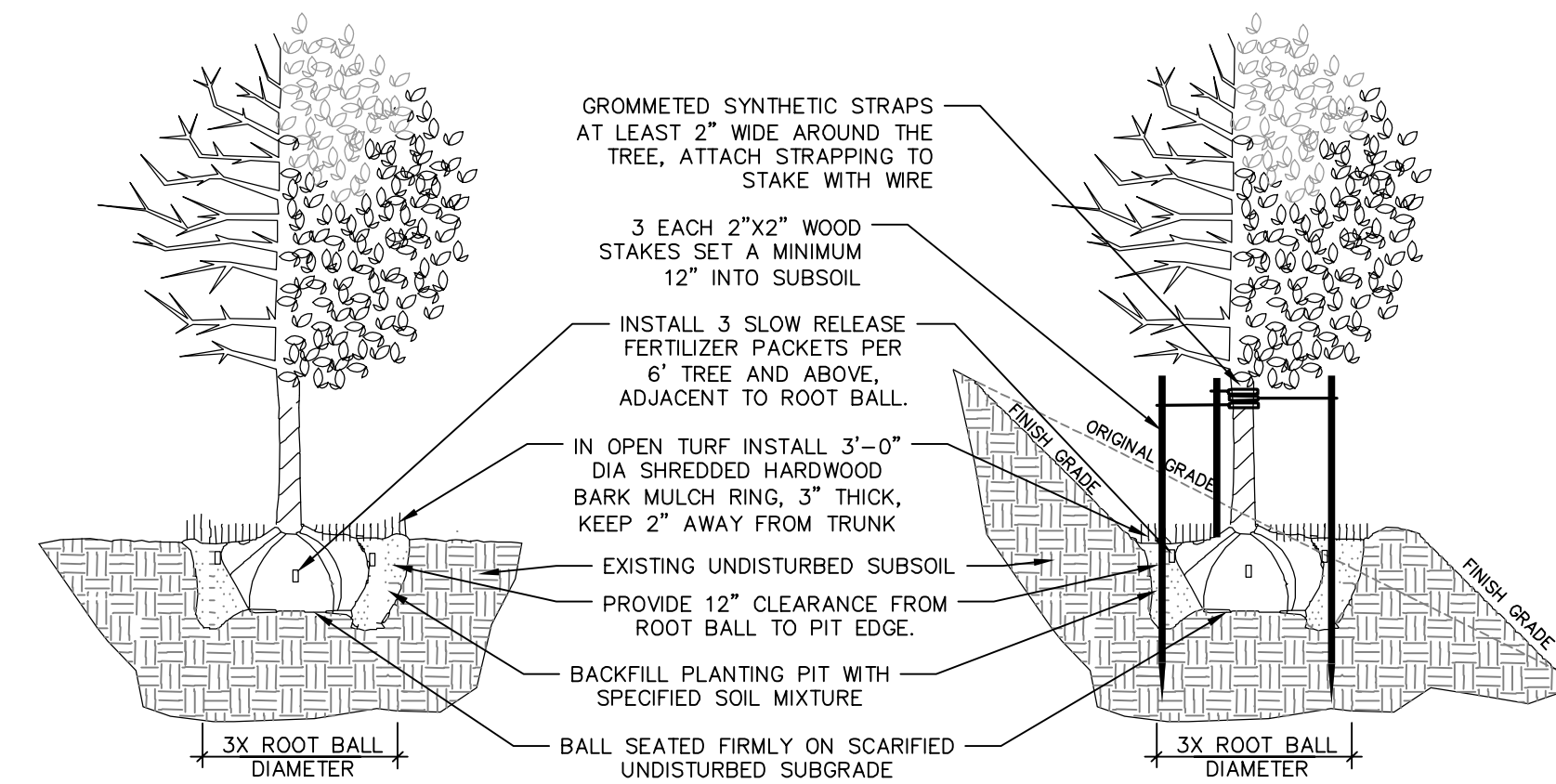


5 DECIDUOUS & EVERGREEN SHRUB PLANTING
L201 N.T.S.

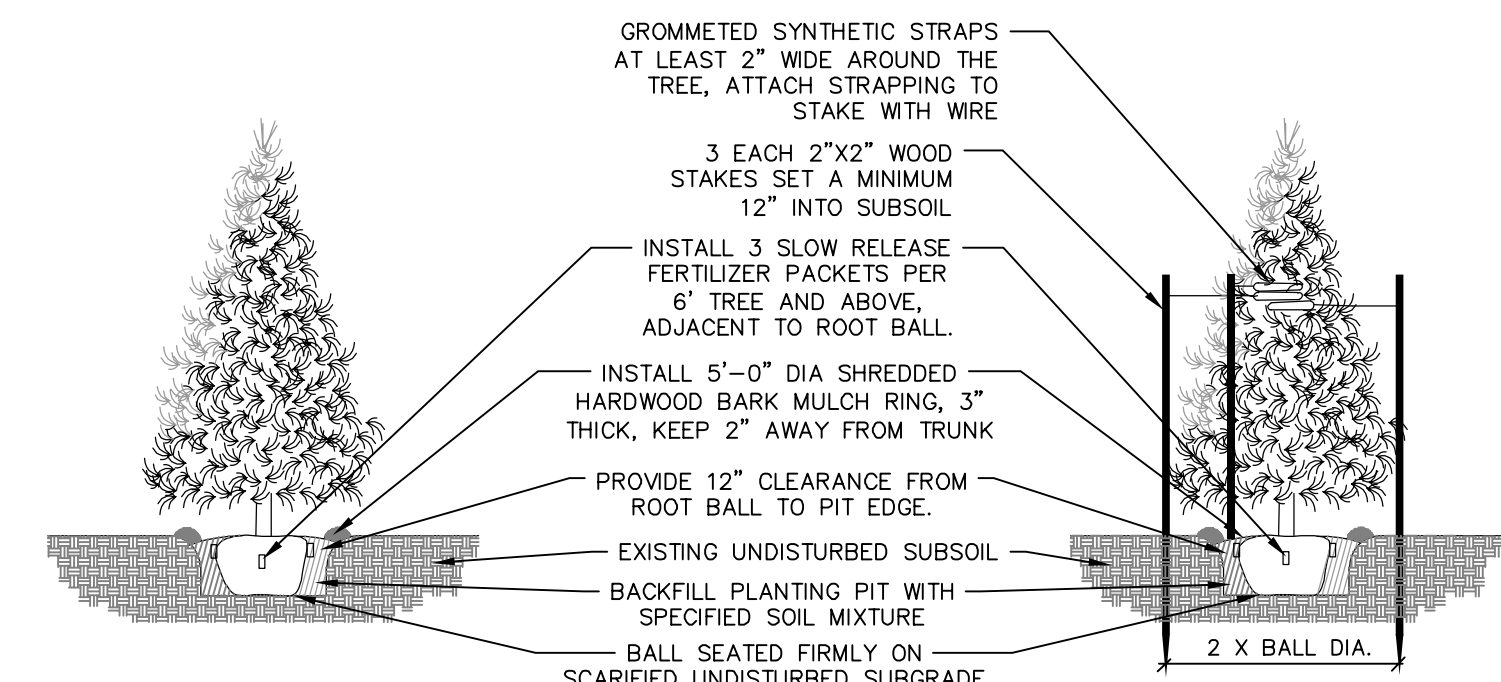


NOTE:
1. BEVEL OR RECESS THE TOP OF ALUMINUM EDGING 1/2" BELOW THE TOP OF SIDEWALK OR TOP OF CURB WHERE EDGING TERMINATES AT A SIDEWALK OR CURB TO PREVENT A TRIPPING HAZARD.

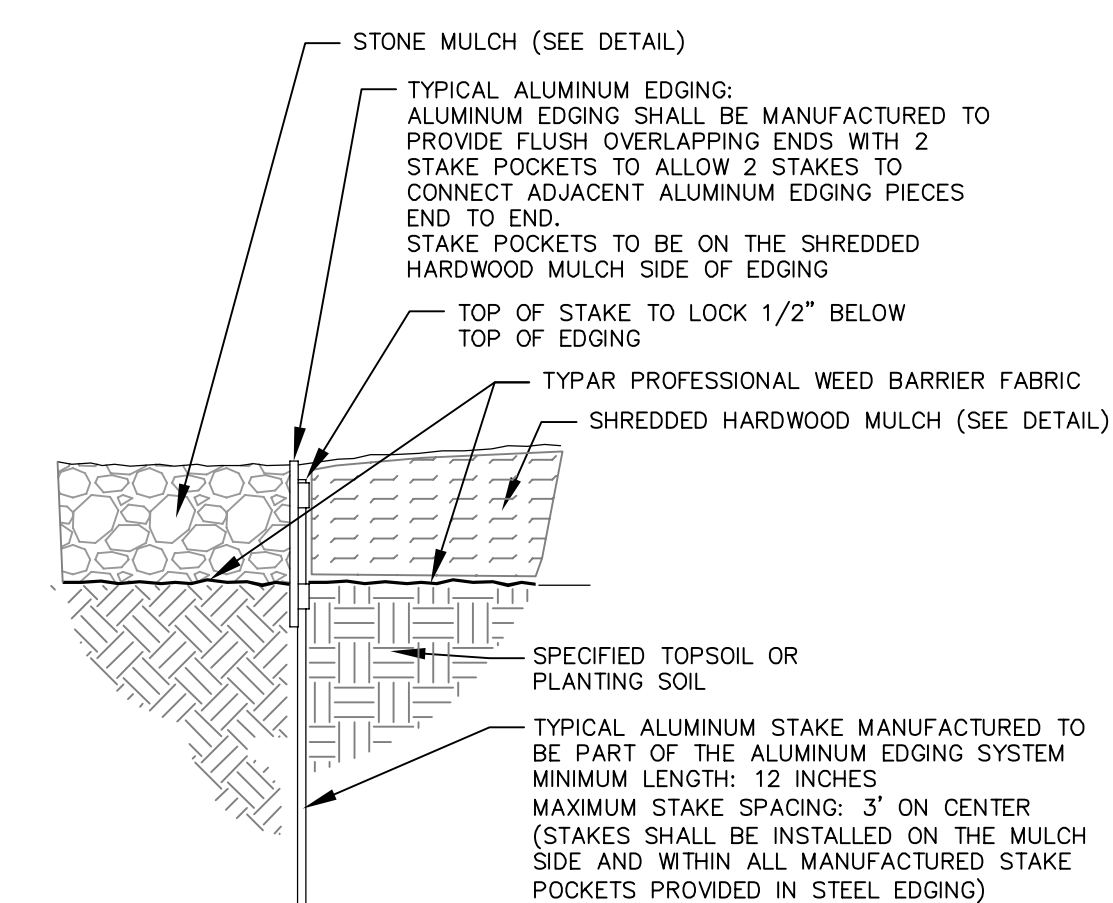
9 ALUMINUM EDGING AT PLANTING BED SECTION
L201 N.T.S.



3 DECIDUOUS TREE PLANTING, STAKING, & PLANTING ON A SLOPE
L201 N.T.S.



4 EVERGREEN TREE PLANTING & STAKING
L201 N.T.S.



NOTE:
1. BEVEL OR RECESS THE TOP OF ALUMINUM EDGING 1/2" BELOW THE TOP OF SIDEWALK OR TOP OF CURB WHERE EDGING TERMINATES AT A SIDEWALK OR CURB TO PREVENT A TRIPPING HAZARD.
2. TOP OF MULCH TO MATCH THE TOP OF THE EDGING.

10 ALUMINUM EDGING AT MULCH SEPERATION SECTION
L201 N.T.S.



knothe + bruce
ARCHITECTS
Phone: 8401 Greenway Blvd., Suite 900
908.836.3690 Middleton, WI 53702



788 N. Jefferson Street, Ste 900
Milwaukee, Wisconsin 53202
kapurinc.com

ISSUED
Plan Commission Set - January 17, 2025

PROJECT TITLE
Jakum Site
Redevelopment

Red Earth
Development

N. 15th St. & Luedke Ct.
Sheboygan, Wisconsin
SHEET TITLE
SITE
LANDSCAPE
DETAILS

SHEET NUMBER

L201

PROJECT NO. 2427

© Knothe & Bruce Architects, LLC