

BUILDING DIRECTORY

Floor 1

Audiobooks
Book Club Kits
Cafe
CDs/DVDs
Exp. Collection
Fax Service
Fiction
Friends Bookstore

Graphic Novels
Holds Pickup
Large Print
New Materials
Plant Exchange
Rocca Room
Video Games

Floor 2

Biographies
Copy/Scan Service
Genealogy
Makerspace
Magazines
Maps
Newspapers
Nonfiction

Public Computers
Public Conf. Rooms
Quiet Study Room
Private Study Rooms
Research Desk
Seed Library
Teen Study Area
Warschau Room

Floor 3

Children's Library
The Loft

Story Garden
Teen Center

HOURS

REGULAR HOURS (Labor Day to Memorial Day)

Monday-Thursday
8:30 a.m. to 8 p.m.

Friday & Saturday
8:30 a.m. to 5 p.m.

Sunday
1 to 5 p.m.

SUMMER HOURS (Memorial Day to Labor Day)

Tues., Thurs., Fri. & Sat.
8:30 a.m. to 5 p.m.

Monday & Wednesday
8:30 a.m. to 8 p.m.

Sunday
Closed

STAY CONNECTED

Keep up on library news and learn about upcoming author visits, lectures, maker workshops, classes & more:

Social Media



@meadpl



meadpubliclibrary



@meadlibrary



Mead Public Library

Newsletters

Sign up for our monthly e-newsletter at www.meadpl.org, or pick up a printed copy of *Footnotes*, which is our quarterly guide to news, classes and events at Mead.

Events Calendar

www.meadpl.org/events

Staff Blog

www.blog.meadpl.org



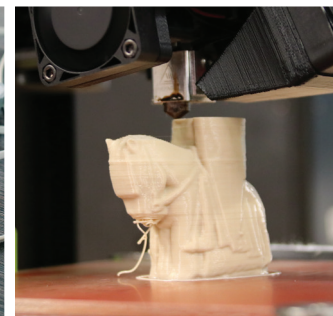
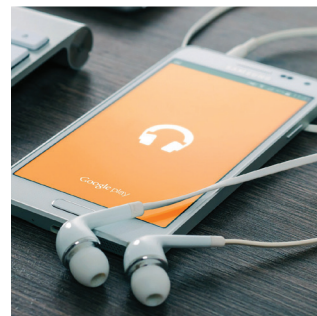
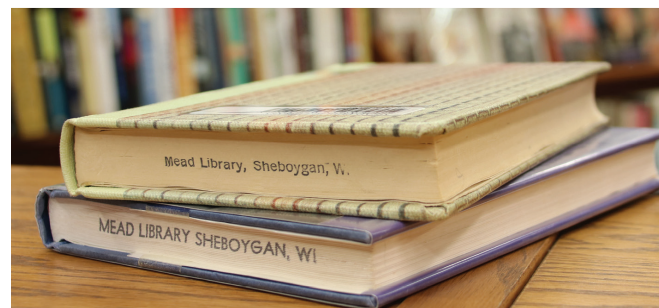
MEAD LIBRARY

710 NORTH 8TH STREET
SHEBOYGAN, WISCONSIN 53081
920-459-3400 | WWW.MEADPL.ORG

WELCOME TO YOUR LIBRARY



MEAD
LIBRARY



LEARN, EXPLORE, CONNECT

YOUR ACCOUNT

Manage Your Account

Access your account at www.meadpl.org, by phone, in person at the library, or download the Monarch 2 Go app. To access your account online, you'll need your account number and PIN, which is usually the last four digits of your telephone number.



Reserves

Search for and reserve items from any of the more than 30 Monarch Library System locations at www.meadpl.org. Items can be picked up and returned to any library.

Renew items

Visit the first-floor Customer Service Desk, call 459-3400, ext. 2 or access your account online. In most instances, you can renew items up to two times if there are no requests for the item.

LIBRARY SERVICES

- Chromebooks & Wi-Fi Hotspots
- Copy/Fax/Scan
- Curbside Pickup
- Free Wi-Fi
- Free Delivery for Homebound Residents
- Lectures, Workshops, Author Talks & Events
- Makerspace
- Meeting Rooms
- Notary
- Test Proctoring
- Public Computers
- Seed Library
- Study Rooms
- Used Book Store



COLLECTIONS

- Audiobooks
- Book Club Kits
- Experience Collection
- Fiction/Nonfiction
- Genealogy/Local History
- Graphic Novels
- Holocaust Collection
- Magazines & Newspapers
- Maps
- Music
- Movies
- Toy & Book Kits
- Ukuleles
- Video Games



E-CONTENT

- Comics
- Databases
- Digital Magazines
- eBooks, eAudiobooks
- Movie/TV Streaming
- Music Streaming
- New York Times Digital
- Online Training/Classes



CONTRIBUTE

- Volunteer for clerical work, shelf reading, cleaning and more.
- Help supplement funding to the library by joining the **Friends of Mead Public Library**.
- Support the **Mead Public Library Foundation** Endowment Fund and help fund purchases, services and building enhancements.

— Visit the library or call for details.

CHECKOUT POLICIES

LOAN PERIODS

Books & Audiobooks

14 days (new)
28 days

Kids Books & Audiobooks

28 days

DVDs

7 days (new)
14 days

CDs

14 days

Magazines

14 days

Encyclopedias

28 days

Video Games

28 days

Experience Passes

7 days

Ukuleles

28 days

Chromebooks + Hotspots

7 days

Sewing Machine

28 days

Movie Geek Boxes

28 days

Storytime-at-Home Kits

14 days

Kids Book & CD Kits

28 days

Toy & Book Kits

7 days

Kids STEM Kits

14 days

NO LATE FEES

Mead Library is fine free, meaning cardholders will not be charged late fees for overdue items regardless of where the item originates.

Cardholders will still be billed for lost and damaged items, and accounts will be temporarily blocked once items are two weeks overdue.

Materials may be returned to other Monarch member libraries in Dodge, Ozaukee, Sheboygan & Washington counties, or to the bookmobile.