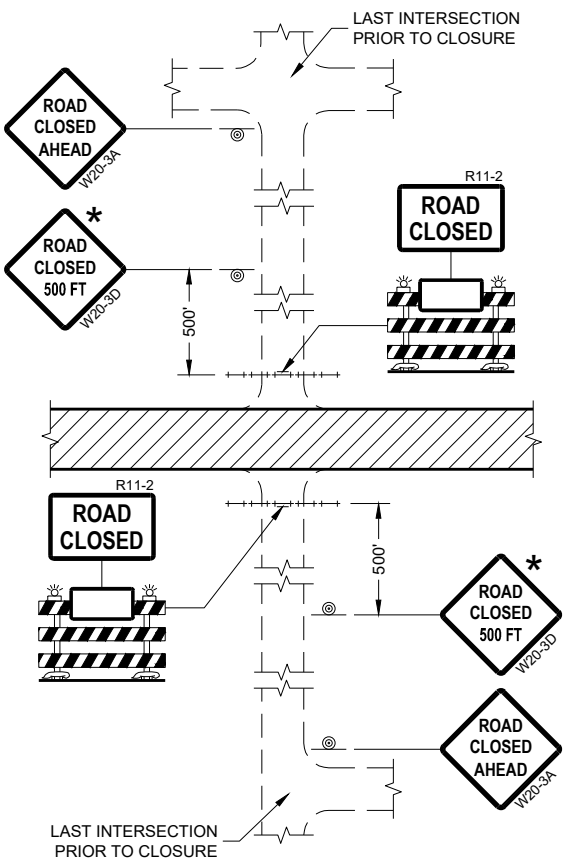


DETOUR SIGNAGE

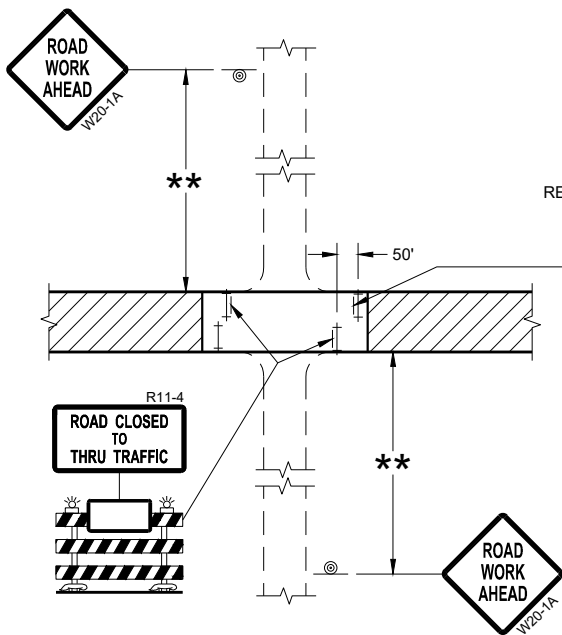
**DETOUR TO ABOVE & BEYOND
PARKING**

**DRIVE SOUTH TO WISCONSIN
AVE, TURN WEST ON WISCONSIN
AVE. DRIVE NORTH ON NINTH
STREET, TURN EAST ON NIAGARA
AVE TO ABOVE & BEYOND
PARKING.**

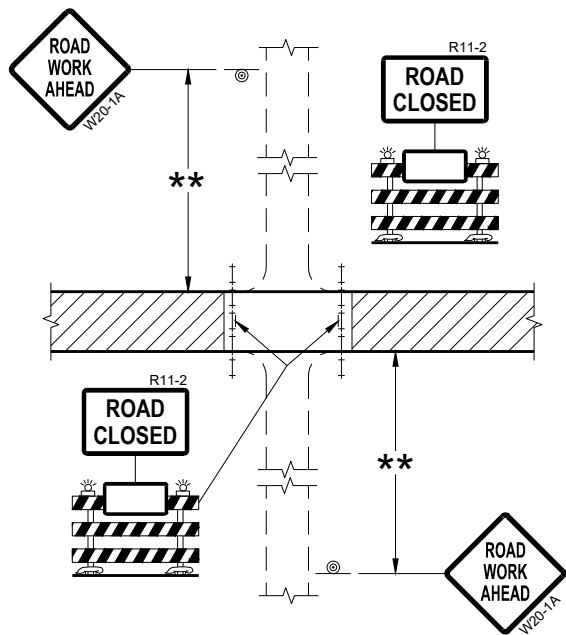
SDD 15C03 Barricades and Signs for Sideroad Closures



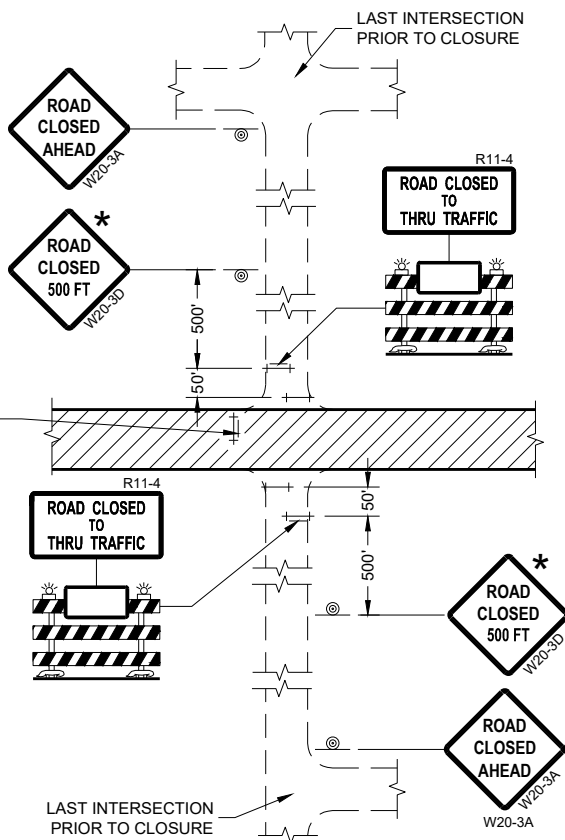
DETAIL 1
(NO ACCESS TO PROJECT)



DETAIL 3
(PUBLIC CROSS-TRAFFIC MAINTAINED.
CONTRACTOR, LOCAL BUSINESS AND
RESIDENT ACCESS TO PROJECT)



DETAIL 2
(PUBLIC CROSS-TRAFFIC MAINTAINED.
NO ACCESS TO PROJECT)



DETAIL 4
(CONTRACTOR, LOCAL BUSINESS AND
RESIDENT ACCESS TO PROJECT)

GENERAL NOTES

THE EXACT NUMBER, LOCATION, AND SPACING OF ALL SIGNS AND BARRICADES SHALL BE ADJUSTED TO FIT FIELD CONDITIONS AS APPROVED BY THE ENGINEER.

ANY SIGNS TEMPORARY OR EXISTING, WHICH CONFLICT WITH TRAFFIC CONTROL "IN USE" SHALL BE REMOVED OR COVERED AS NEEDED AND AS APPROVED BY THE ENGINEER.

THE SPACING BETWEEN TRAFFIC CONTROL SIGNS SHOULD BE ADJUSTED TO NOT CONFLICT WITH AND SHOULD PROVIDE A DESIRABLE MINIMUM OF 200 FEET CLEARANCE (500 FEET DESIRABLE) TO EXISTING SIGNS THAT WILL REMAIN IN PLACE.

IF A "STOP" SIGN MUST BE REMOVED FOR A WORK OPERATION, A TEMPORARY "STOP" SIGN SHALL BE PLACED PRIOR TO THE SIGN REMOVAL, OR A FLAGGER SHALL BE PROVIDED UNTIL THE SIGN IS REESTABLISHED.

BARRICADES THAT MUST BE MOVED FOR A WORK OPERATION SHALL BE IMMEDIATELY REESTABLISHED UPON COMPLETION OF THE OPERATION OR FOR CONTINUING OPERATIONS, AT THE END OF EACH WORKING DAY.

SIGNS THAT WILL BE IN PLACE LESS THAN SEVEN CONTINUOUS DAYS AND NIGHTS MAY BE MOUNTED ON PORTABLE SUPPORTS.

ALL TYPE III BARRICADES SHALL HAVE RAILS REFLECTORIZED ON BOTH FACES. STRIPES SHALL BE PROPERLY SLOPED DOWN TOWARD THE TRAFFIC SIDE OR AS SHOWN IN THE ROAD CLOSURE BARRICADE DETAIL "D" FOR FULL ROAD CLOSURES.

TYPE "A" LOW-INTENSITY FLASHING WARNING LIGHTS SHALL BE VISIBLE ON BOTH SIDES OF THE BARRICADE.

THE R11-2, R11-3, AND R11-4 SIGNS PLACED ON BARRICADES SHALL COVER NO MORE THAN THE TOP RAIL. THE SIGNS SHALL NOT COVER ANY PORTION OF THE MIDDLE OR BOTTOM RAILS.

ALL SIGNS SHALL BE 48" X 48" UNLESS OTHERWISE NOTED BELOW:
R11-2 SHALL BE 48" X 30".
R11-4 AND R11-3 SHALL BE 60" X 30".

- * OMIT THE "ROAD CLOSED 500 FT." SIGN IF THE LAST INTERSECTION IS 500 FEET OR LESS FROM THE WORK ZONE.
- ** 500' MAX. OR AT LAST INTERSECTION, WHICHEVER IS CLOSEST.

LEGEND

- SIGN ON PERMANENT SUPPORT
- TYPE III BARRICADE
- TYPE III BARRICADE WITH ATTACHED SIGN
- TYPE "A" WARNING LIGHT (FLASHING)
- WORK AREA

BARRICADES AND SIGNS FOR SIDEROAD CLOSURES

STATE OF WISCONSIN
DEPARTMENT OF TRANSPORTATION

APPROVED
July 2018 /S/ Andrew Heidtke
DATE WORK ZONE ENGINEER
FHWA

*Barricades and Signs for Sideroad Closures***References:**

Part 6 of the Manual on Uniform Traffic Control Devices (MUTCD)
[FDM 11-50-20](#)

Bid items associated with this drawing:

<u>ITEM NUMBER</u>	<u>DESCRIPTION</u>	<u>UNIT</u>
643.0420	Traffic Control Barricades Type III	DAYS
643.0705	Traffic Control Warning Lights Type A	DAYS
643.0900	Traffic Control Signs	DAYS

Standardized Special Provisions associated with this drawing:

108-057 Wisconsin Lane Closure System Advance Notification

Other SDDs associated with this drawing:

[SDD 15C2](#) Barricades and Signs for Mainline Closures, sheets "a" and "b" are required.
[SDD 15D30](#) Traffic Control, Sidewalk Closure (if sidewalk will be closed)

Design Notes:

A traffic control overview sheet is desirable to indicate the following:
Sideroads within the project and whether to use Detail 1, 2, 3, or 4 at each sideroad.
Whether to use Detail A, B, or C from SDD 15c2 sheet "a" and Detail D or E from SDD 15c2 sheet "b" at each mainline end of the project.
Detour route if one is being designated, unless the route is shown on a detour route signing sheet.

Contact Person:

Andrew Heidtke (414) 220-6802