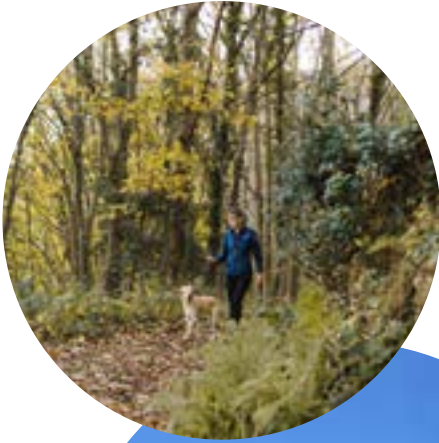


APPENDIX: INDIVIDUAL PARK SHEETS

The City of Sheboygan

COMPREHENSIVE OUTDOOR RECREATION PLAN



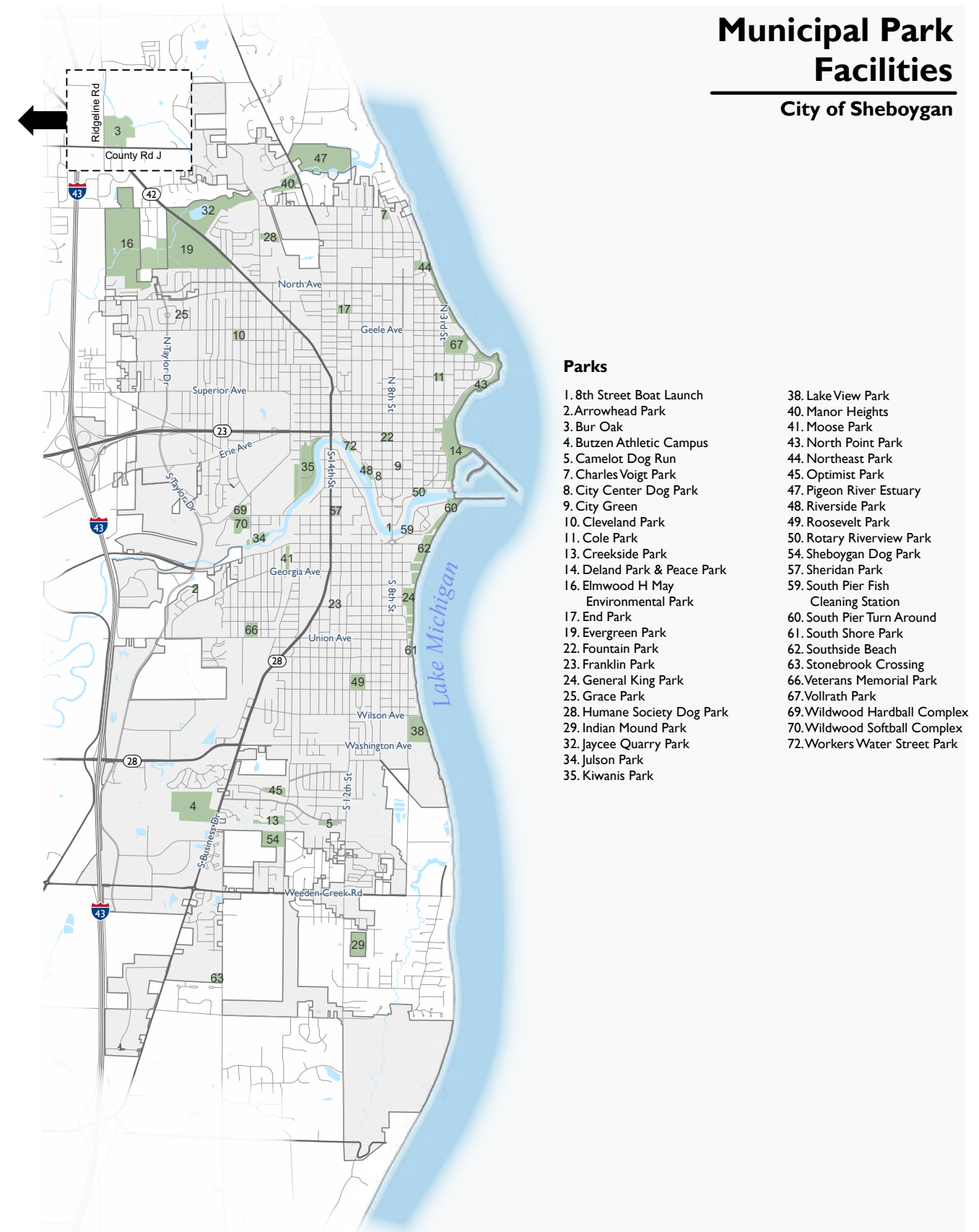
JULY 31, 2023 FINAL DRAFT

TABLE OF CONTENTS

OVERALL PARK MAPS

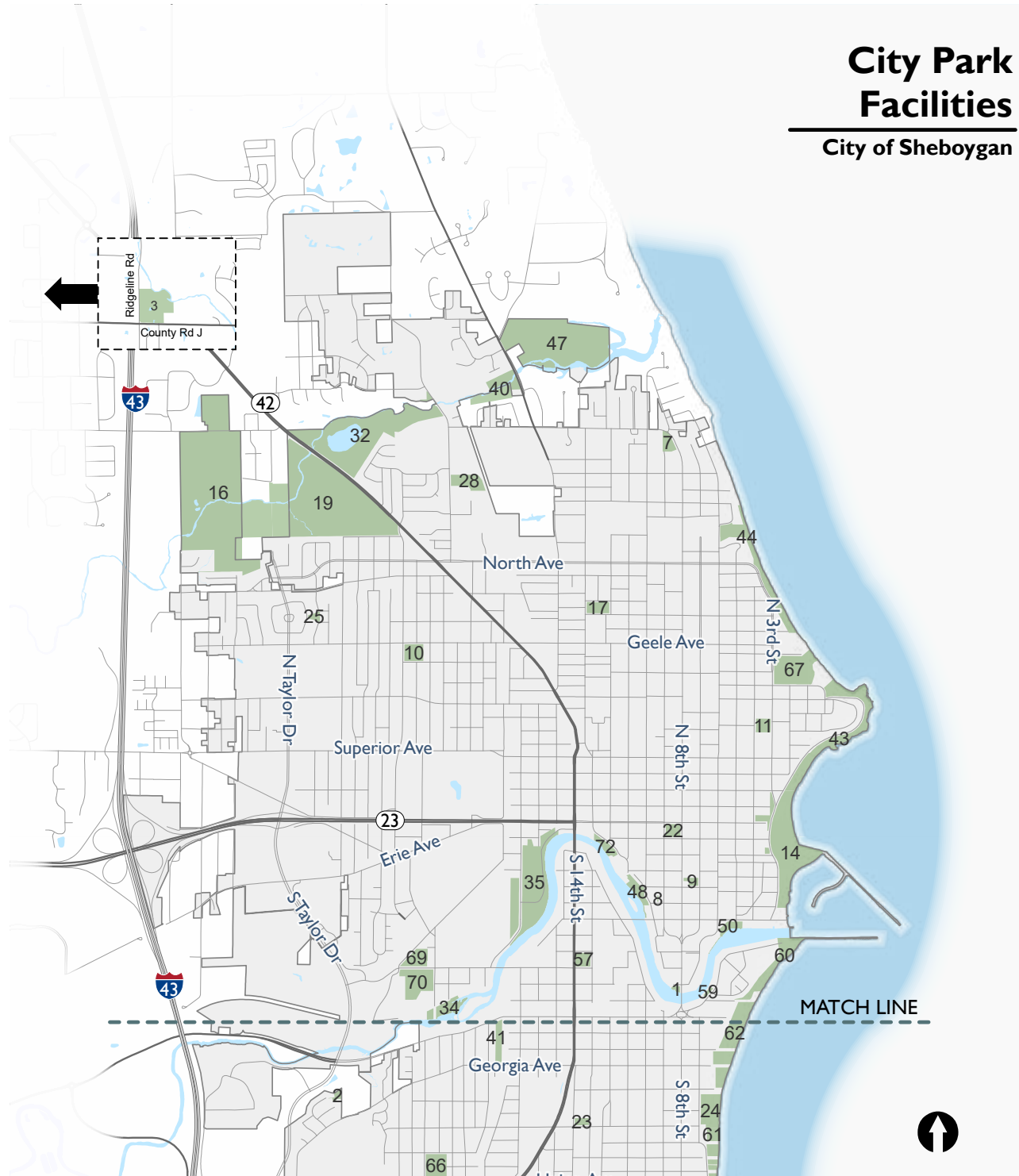
- 1** OVERALL PARK MAPS **5**
- Municipal Parks Map 5
- North Side Enlarged Map 6
- South Side Enlarged Map 7
- Waterfront Parks Maps 8
- Lakefront Parks Maps 9
- Riverfront Parks Maps 10

- 2** INDIVIDUAL PARK SHEETS **11**



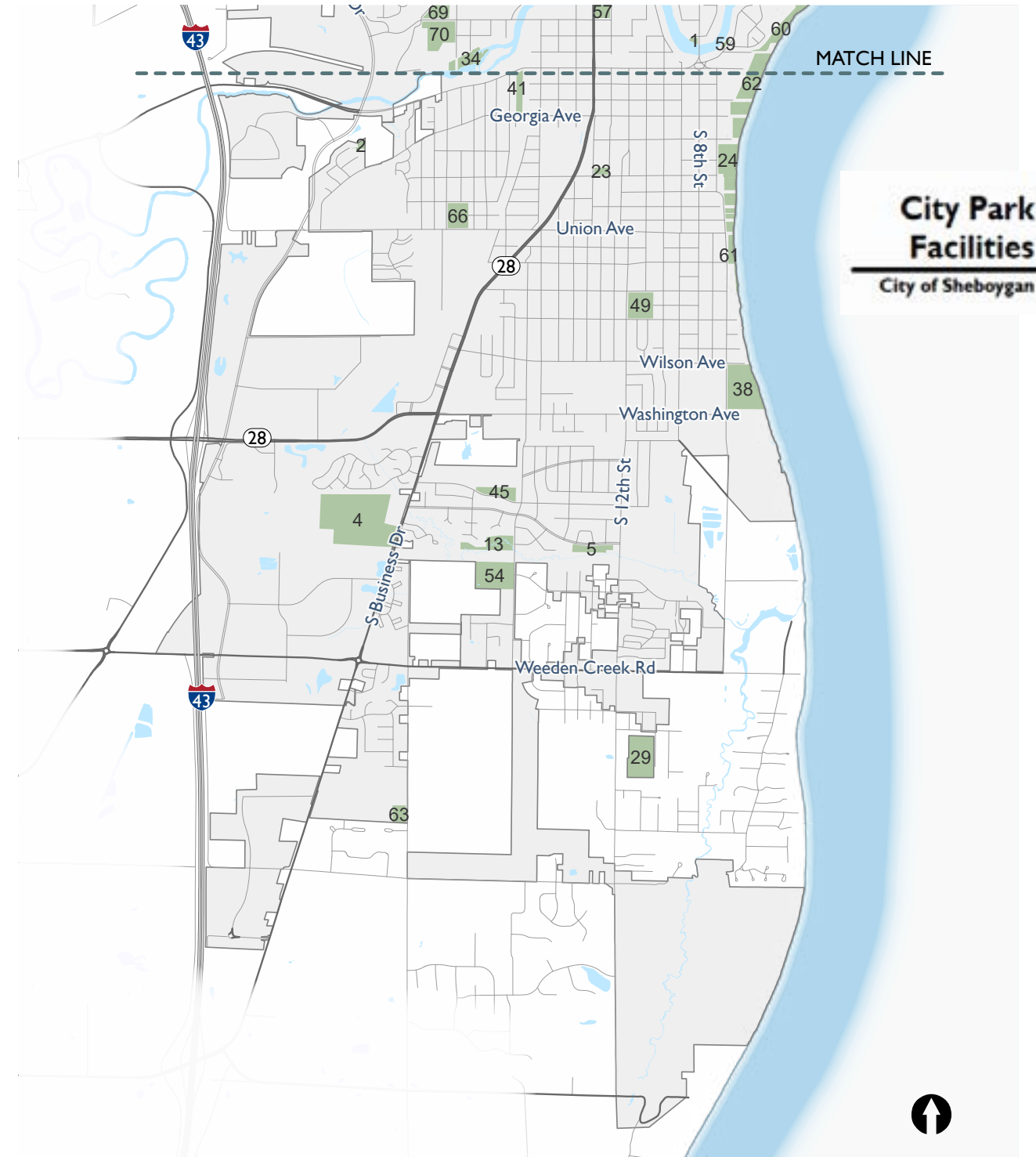
City Park Facilities

City of Sheboygan



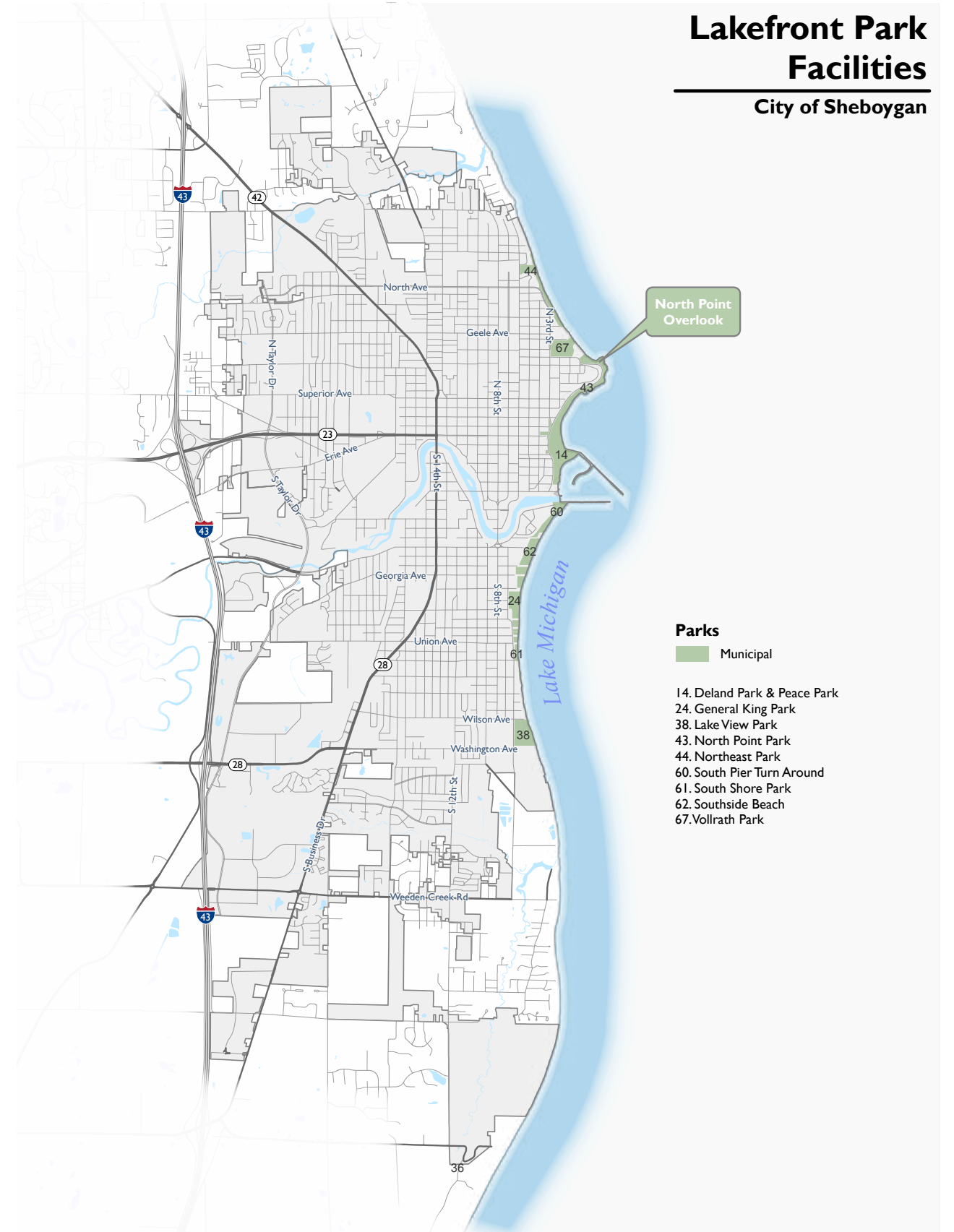
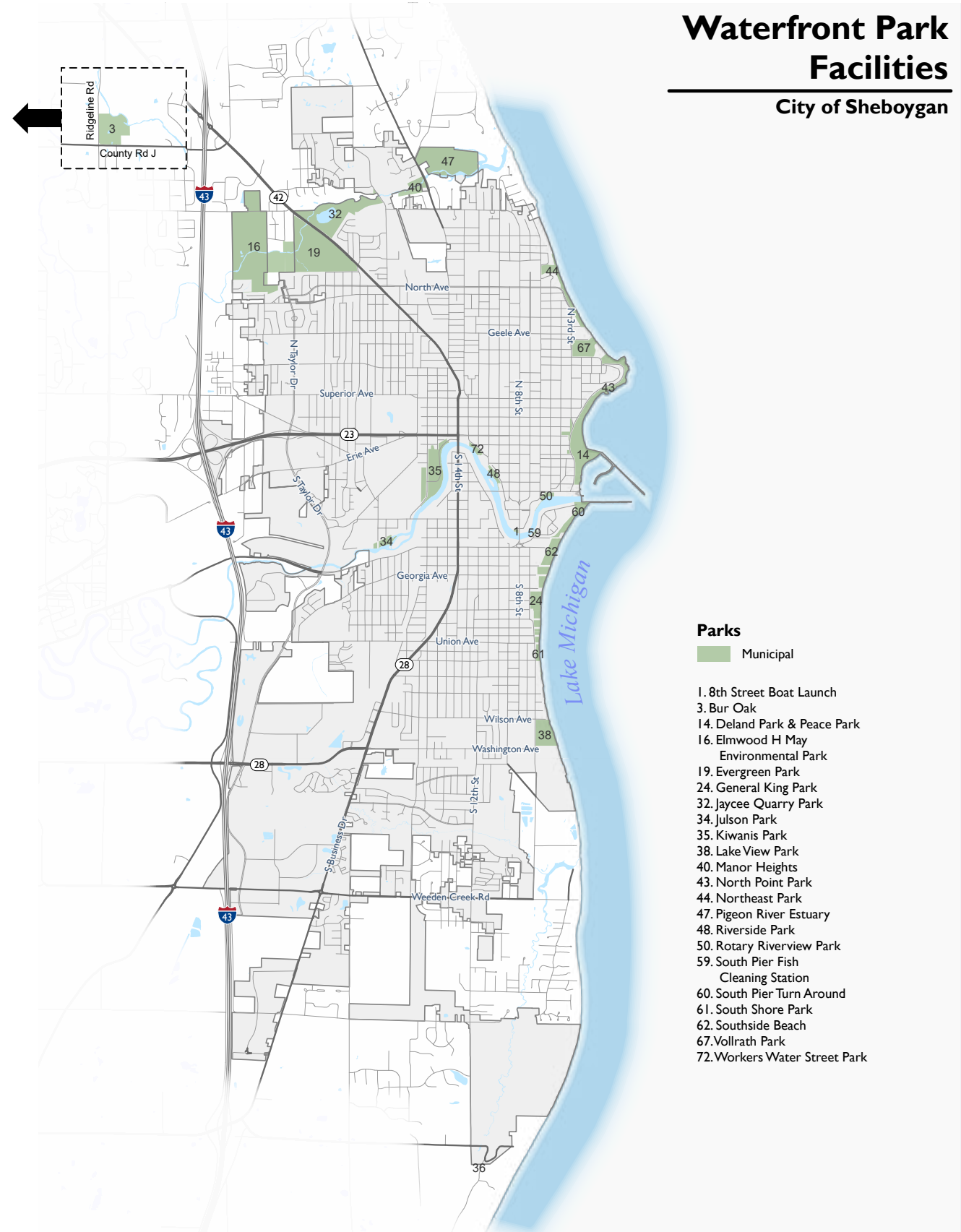
North Side Parks

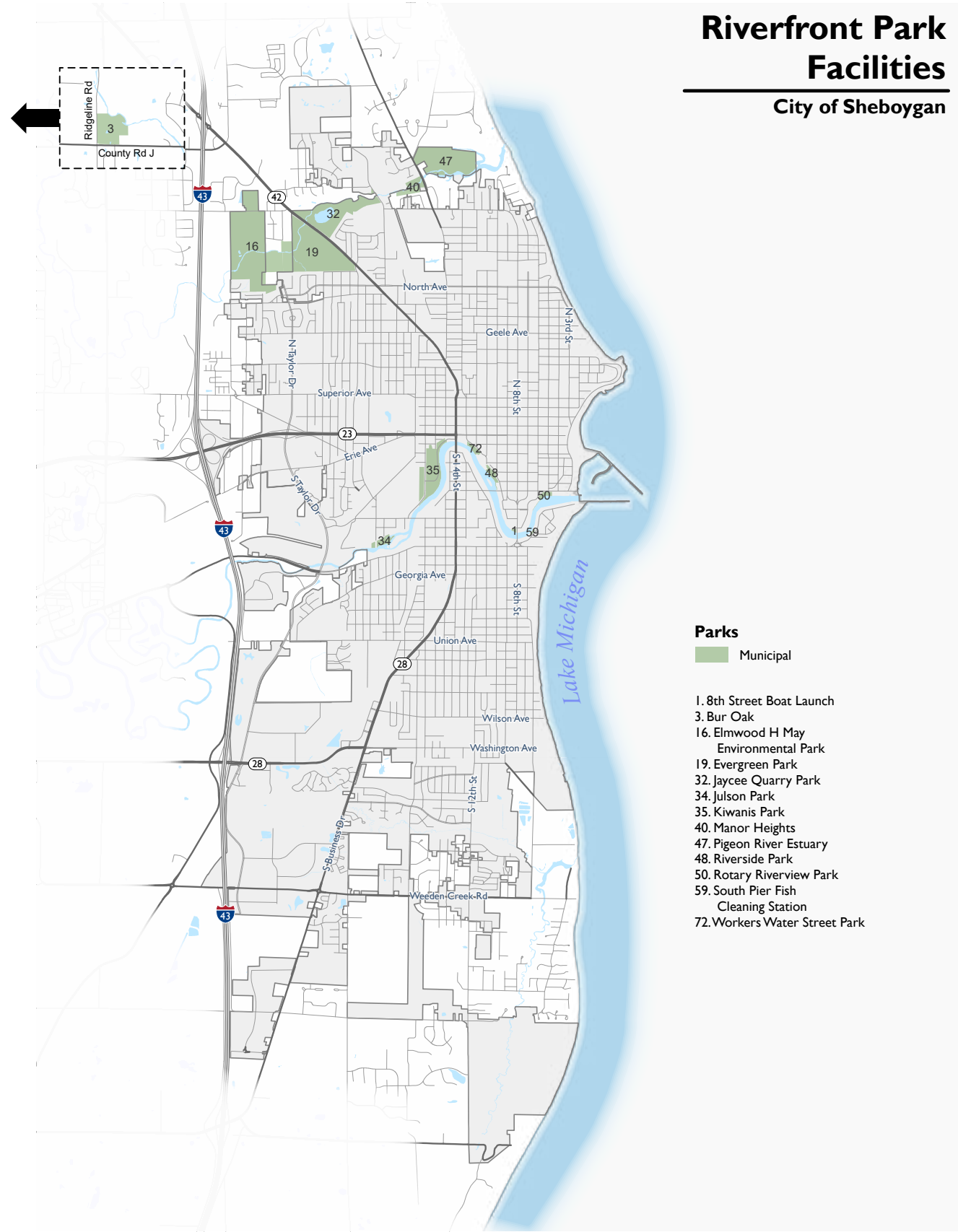
- | | | | |
|------------------------------|-----------------------------|--------------------------------------|-------------------------------|
| 1. 8th Street Boat Launch | Environmental Park | 40. Manor Heights | 60. South Pier Turn Around |
| 3. Bur Oak | 17. End Park | 43. North Point Park | 67. Vollrath Park |
| 7. Charles Voigt Park | 19. Evergreen Park | 44. Northeast Park | 69. Wildwood Hardball Complex |
| 8. City Center Dog Park | 22. Fountain Park | 47. Pigeon River Estuary | 70. Wildwood Softball Complex |
| 9. City Green | 25. Grace Park | 48. Riverside Park | 72. Workers Water Street Park |
| 10. Cleveland Park | 28. Humane Society Dog Park | 50. Rotary Riverview Park | |
| 11. Cole Park | 32. Jaycee Quarry Park | 57. Sheridan Park | |
| 14. Deland Park & Peace Park | 34. Julson Park | 59. South Pier Fish Cleaning Station | |
| 16. Elmwood H May | 35. Kiwanis Park | | |



South Side Parks

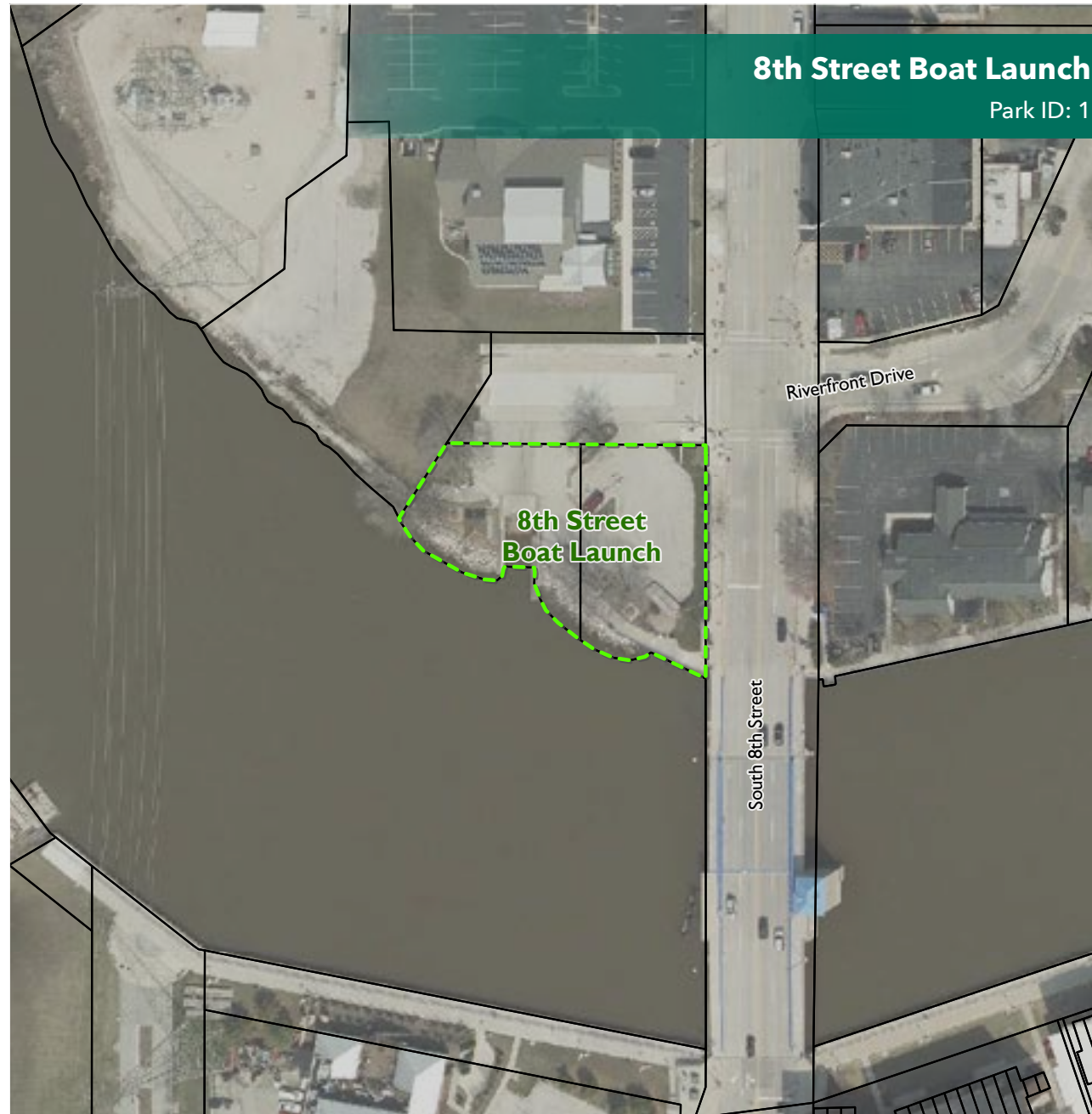
- | | |
|---------------------------|----------------------------|
| 2. Arrowhead Park | 41. Moose Park |
| 4. Butzen Athletic Campus | 45. Optimist Park |
| 5. Camelot Dog Run | 49. Roosevelt Park |
| 13. Creekside Park | 54. Sheboygan Dog Park |
| 23. Franklin Park | 61. South Shore Park |
| 24. General King Park | 62. Southside Beach |
| 29. Indian Mound Park | 63. Stonebrook Crossing |
| 38. Lake View Park | 66. Veterans Memorial Park |





INDIVIDUAL PARK SHEETS

8TH STREET BOAT LAUNCH



Park Description

Location: 807 Riverfront Drive

This facility provides public access to the Sheboygan River for small watercraft. The Visitor's Center provides amenities and a gift shop.

Opportunities

- River edge restoration
- Riverwalk connection from Riverside Park
- Development of adjacent city property
- Dock improvements

Existing Facilities

- Boat launch
- Visitor's Center
- Riverfront
- Fishing

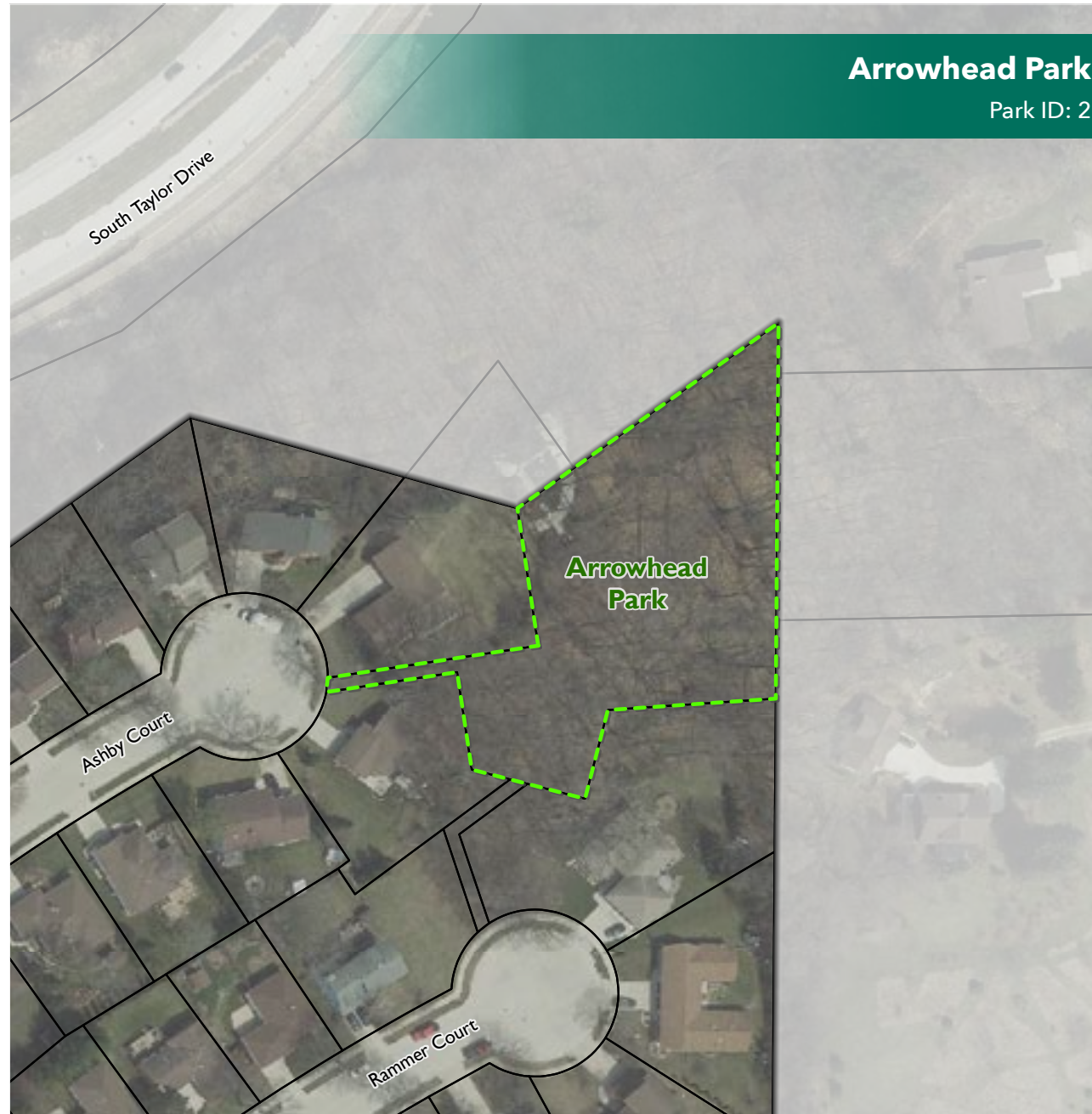


ARROWHEAD PARK

Park Description

Location: 2833 Ashby Court

This park consists of wooded greenspace with natural vegetation.



BUTZEN SPORTS COMPLEX

Park Description

Location: 3936 South Business Drive

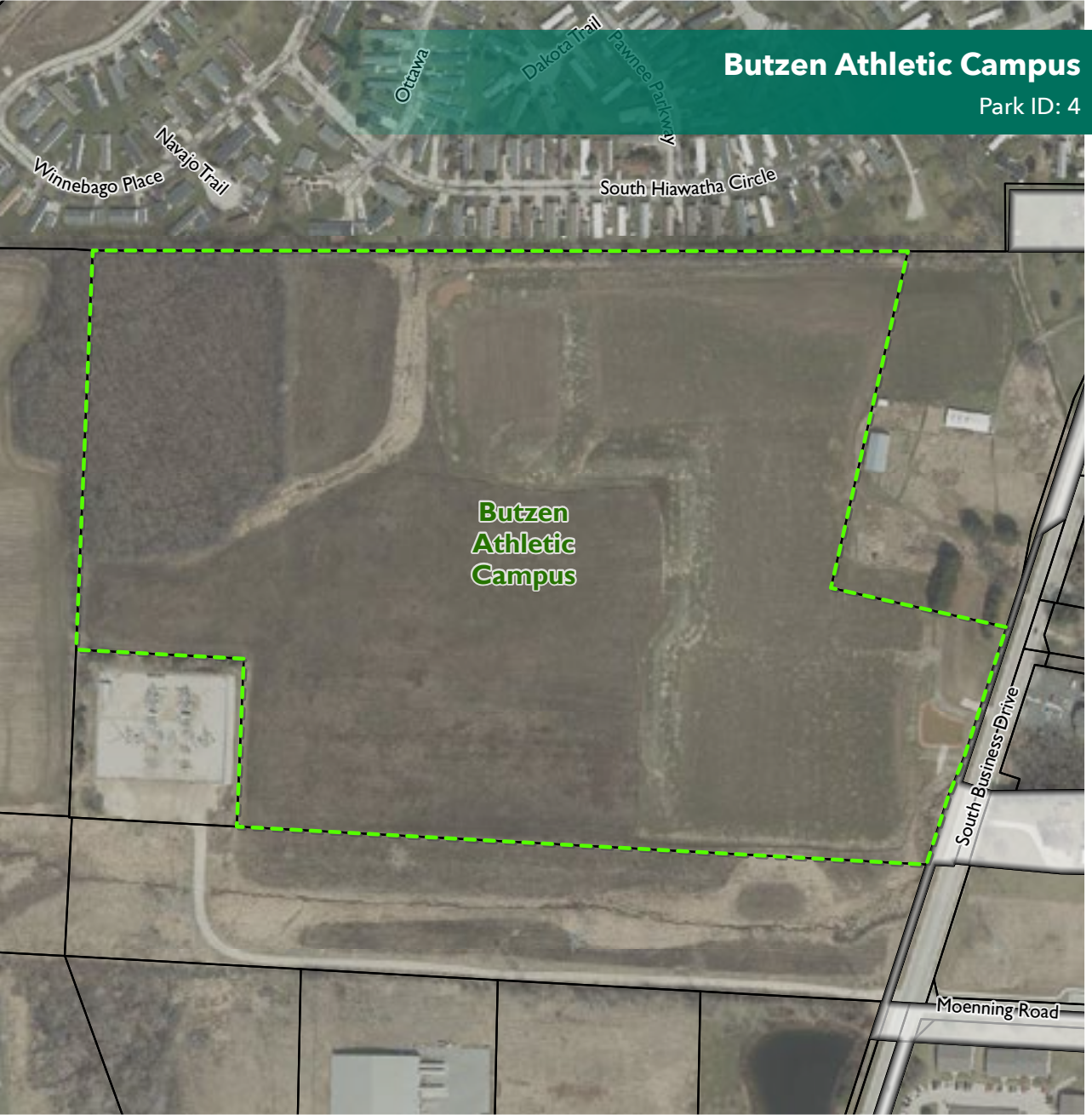
This park is planned for development to support the activities of the Lakeshore United Football Club (LUFC) as well as activities for the City of Sheboygan and Sheboygan County. At this time the plan includes soccer fields, dome/permanent structures, indoor facilities and parking. The park will serve as a community asset that enhances the sense of place and quality of life for local residents. It will create a significant driver of economic impact that supports existing local businesses and functions as a catalyst for attracting and retaining employees, as well as major events, within the region.

Opportunities

- Developing partnerships within the County
- Working with possible Stakeholders
- Fundraising for the development of the park
- Grant opportunities for the development

Existing Facilities

- None



← Athletic complex planned phases.



CAMELOT DOG RUN

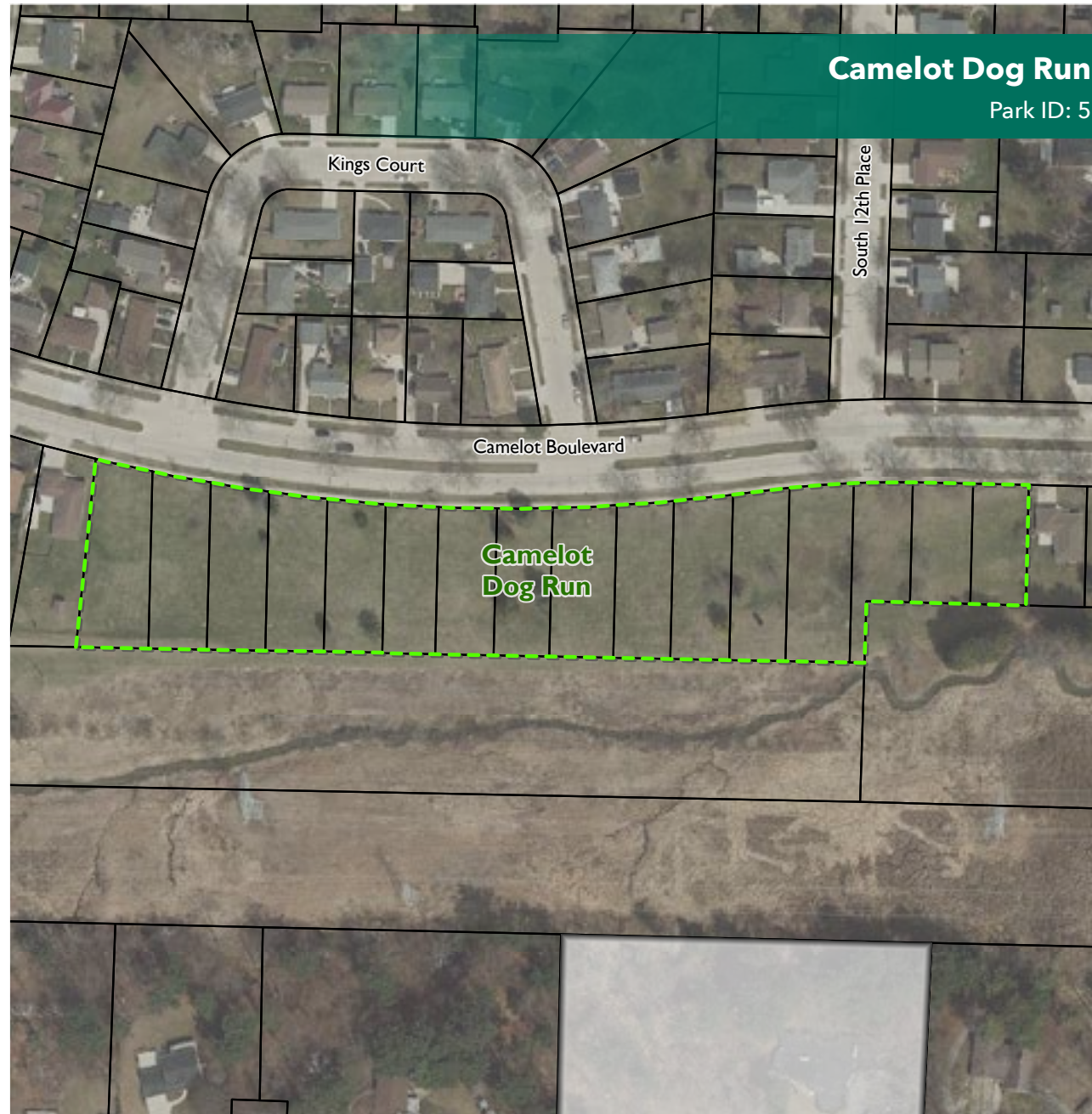
Park Description

Location: 1311 Camelot Boulevard

This park is a pet friendly facility with open play areas. As the site is unfenced, pets must be leashed.

Existing Facilities

- Open space
- Dog-friendly (on-leash)



CHARLES VOIGT PARK

Park Description

Location: 3500 North 8th Street
This 2.86 acre north side park offers playground equipment and plenty of open space.

Opportunities

- Accessibility to play equipment
- Small shelter

Existing Facilities

- Playground equipment
- Open space



CITY CENTER DOG PARK

Park Description

Location: 998 Center Avenue

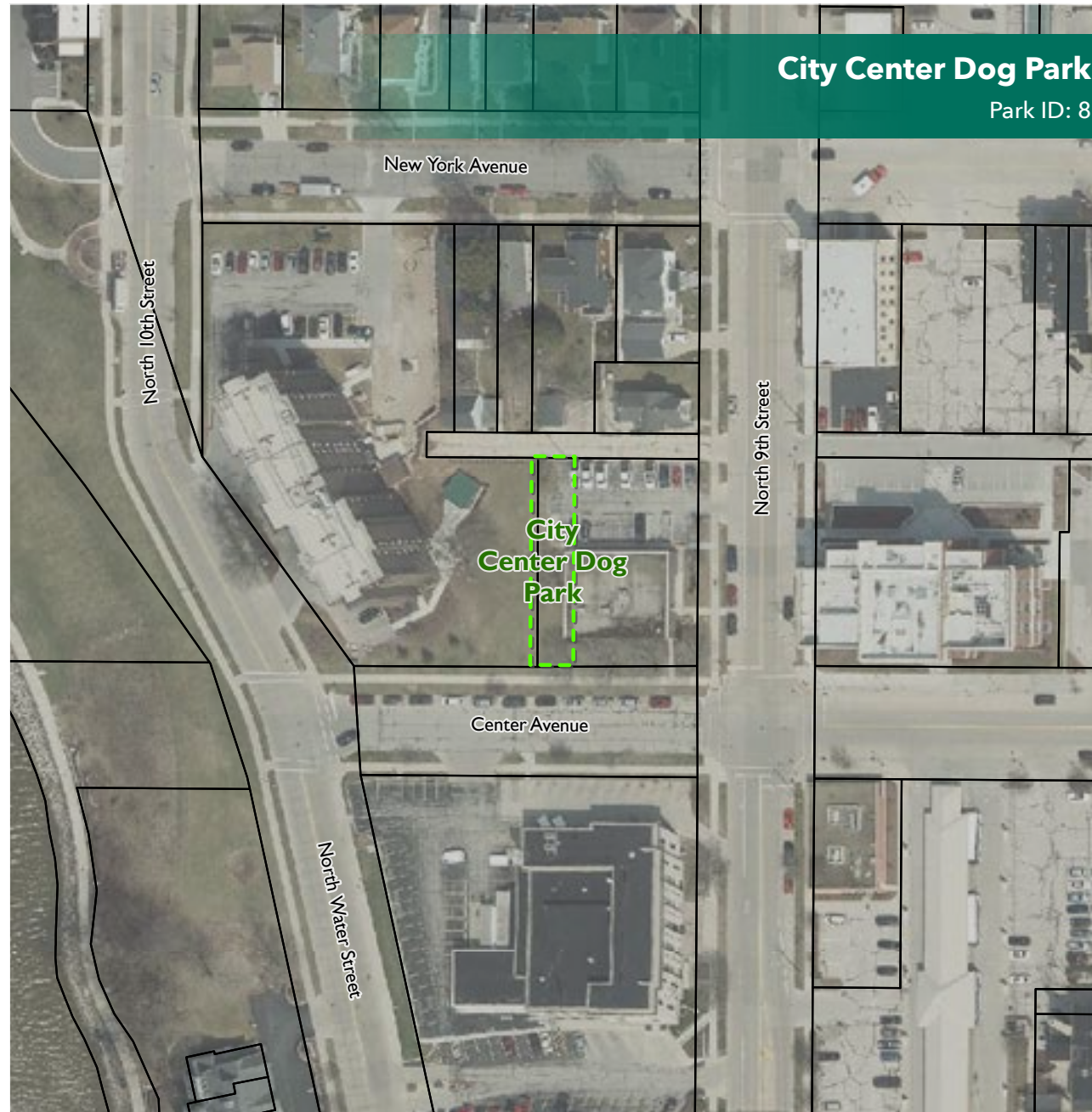
This new dog park is located east of Riverside Park on Center Avenue and 9th Street.

Opportunities

- Shade, benches, and tables
- Water fountain for dogs

Existing Facilities

- Fenced dog park





CITY GREEN

Park Description

Location: 710 New York Avenue

This public space offers a performance space integrated with unique public art. Regular musical performances are held at this location. Food trucks are often present during events. The unique space is overlooked by the John Michael Kohler Arts Center.

Existing Facilities

- Stage/amphitheater
- Greenspace

Opportunities

- Restrooms



▲ Image credit: Visit Sheboygan

CLEVELAND PARK

Park Description

Location: 2331 Geele Avenue

This 4.41 acre park is part of the Cooper-Cleveland Neighborhood. The park contains two playgrounds for children age 2-5 years old and 5-12 years old respectively. There are restrooms and a rentable shelter in the park.

Opportunities

- Off-street parking
- Grass volleyball courts
- Small fenced-in dog park

Existing Facilities

- Shelter available for rental
- Restrooms
- Basketball court
- Playground equipment (ages 2-5; 5-12)
- Grills
- Picnic tables
- Open space
- Splash pad
- Dog friendly (on-leash)



COLE PARK

Park Description

Location: 1700 North 3rd Street

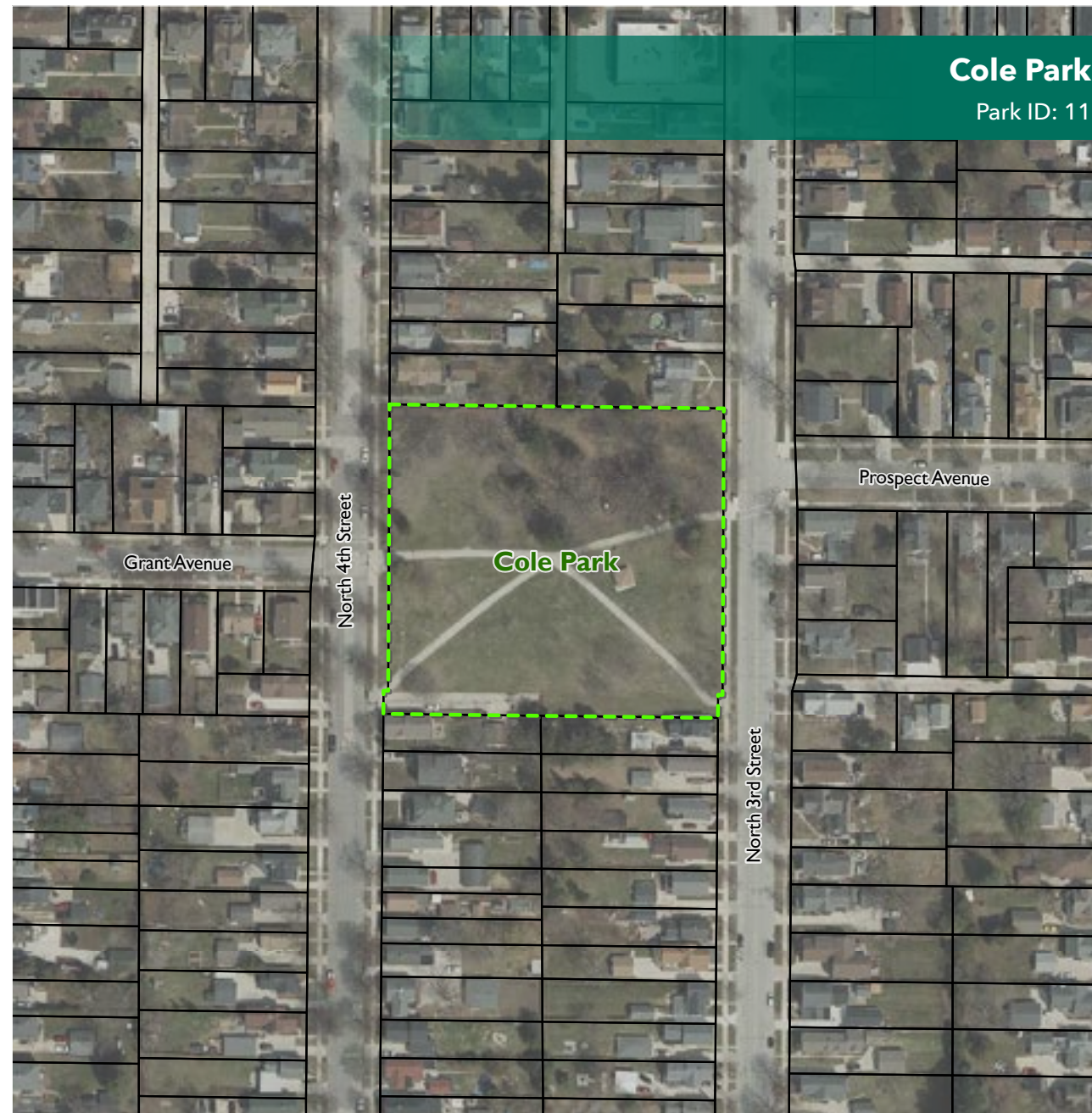
This 2.5 acre park is located on the north side of Sheboygan as part of the North Point Neighborhood. The park includes a small non-rentable picnic shelter.

Opportunities

- Resurface walkways
- Accessibility improvements to walkways
- Additional grills and picnic tables
- Playground border
- Park signage

Existing Facilities

- Playground equipment
- Small picnic shelter
- Picnic tables
- Port-a-potty



CREEKSIDE PARK

Park Description

Location: South 18th Street
This undeveloped park property is located on South 18th Street south of Camelot Boulevard just north of Sheboygan Dog Park. The site is heavily wooded.

Opportunities

- Trail and nature access
- Sightseeing
- Creek restoration

Existing Facilities

- Greenspace with natural vegetation including trees and wetlands



DELAND PARK

Park Description

Location: 715 Broughton Drive

This 16.13 acre community park is located on the shores of Lake Michigan; it is in the heart of the Harbor Centre District. It is home to several festivals, the Marina, Sheboygan Youth Sailing Club, and a boat launch.

The park includes the Deland Community Center, Richardson Shelter, Deland Home, three playground areas including the Rammer playground, and bathhouse overlook that has restrooms and showers.

The City worked with Veterans for Peace to install a Peace Pole in a portion of Deland Park, known as the Michigan/Broughton triangle. A site plan created by a group of volunteers includes plans for the park to include benches, plantings, a walking path, art pieces, and other items that will complement the peace pole.

Existing Facilities

- 3 playground areas (including 1 accessible/inclusive playground)
- Biking/Walking on the Harbor Trail
- Sand volleyball
- Tennis/pickleball
- Swimming
- Fishing area
- Boat launch
- Rentable shelters
- Restrooms
- Event area
- Beachfront
- Fish cleaning station
- Marina

Opportunities

- Bluff stabilization, erosion protection
- Invasive species removal
- Bathhouse refurbishment/replacement
- Bathhouse concessions
- Beachfront restoration
- Performance shelter/bandshell
- Accessibility improvements such as cord walk and mobimat for access to the water.
- Accessibility improvements to Rammer Playground
- Restrooms at Rammer Playground



ELMWOOD H MAY ENVIRONMENTAL PARK



Park Description

Location: 3516 Mueller Road

Elmwood H May Environmental Park (Maywood) is Sheboygan's natural jewel. It offers an Environmental Learning Center, several trails through wetlands, prairie, and maple forest and along the pigeon river. The city partners with the Maywood Trust & Association and Cap Y-Koda to promote environmental stewardship through real life experiences.

A master plan was completed for the park in 2020.

Opportunities

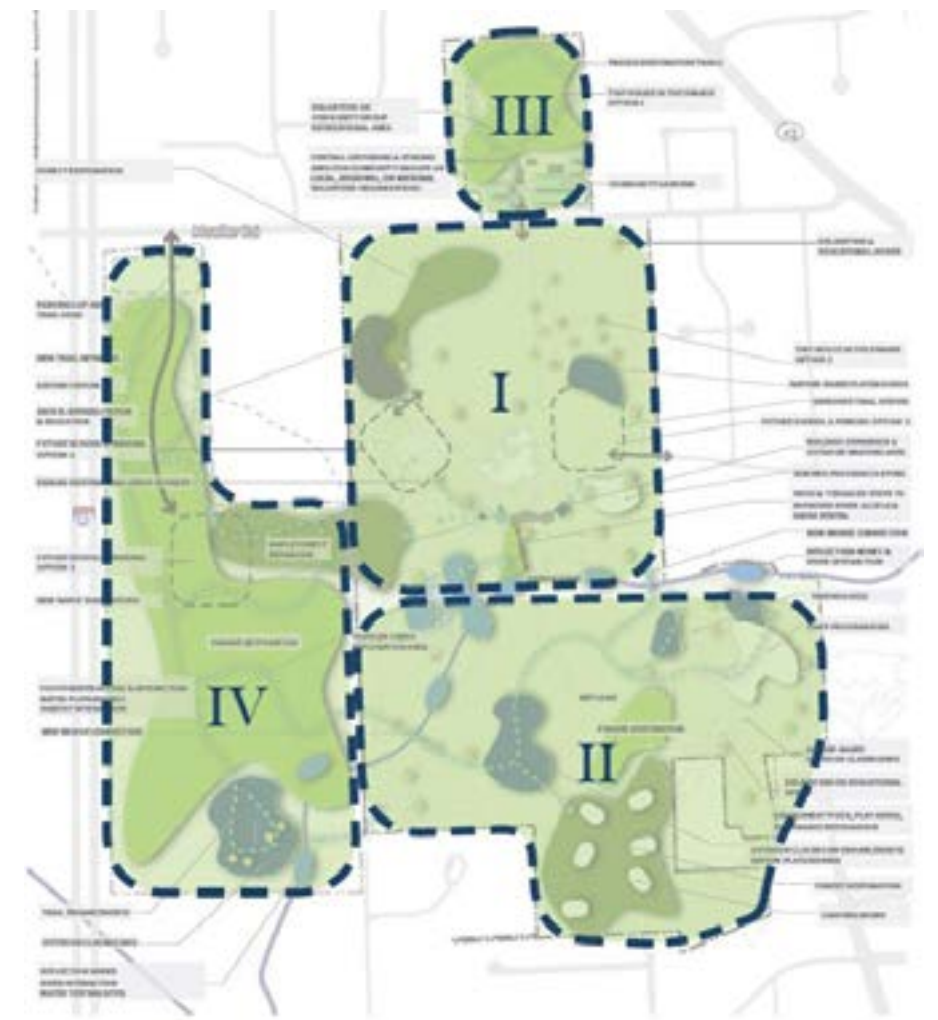
- Follow Master Plan
- Invasive species removal on land and in ponds
- Resurface/restore park driveway
- Land acquisition for expansion
- New restrooms
- New sugar shack
- Outdoor classrooms
- Additional solar panels

Existing Facilities

- Nature walking/hiking trails
- Cross country ski trails
- Environmental Learning Center
- Two spring-fed ponds
- Prairie overlook platform
- Arboretum
- Maple sugaring



▼ 2020 Master Plan. Source: Maywood



END PARK

Park Description

Location: 1236 Bell Avenue

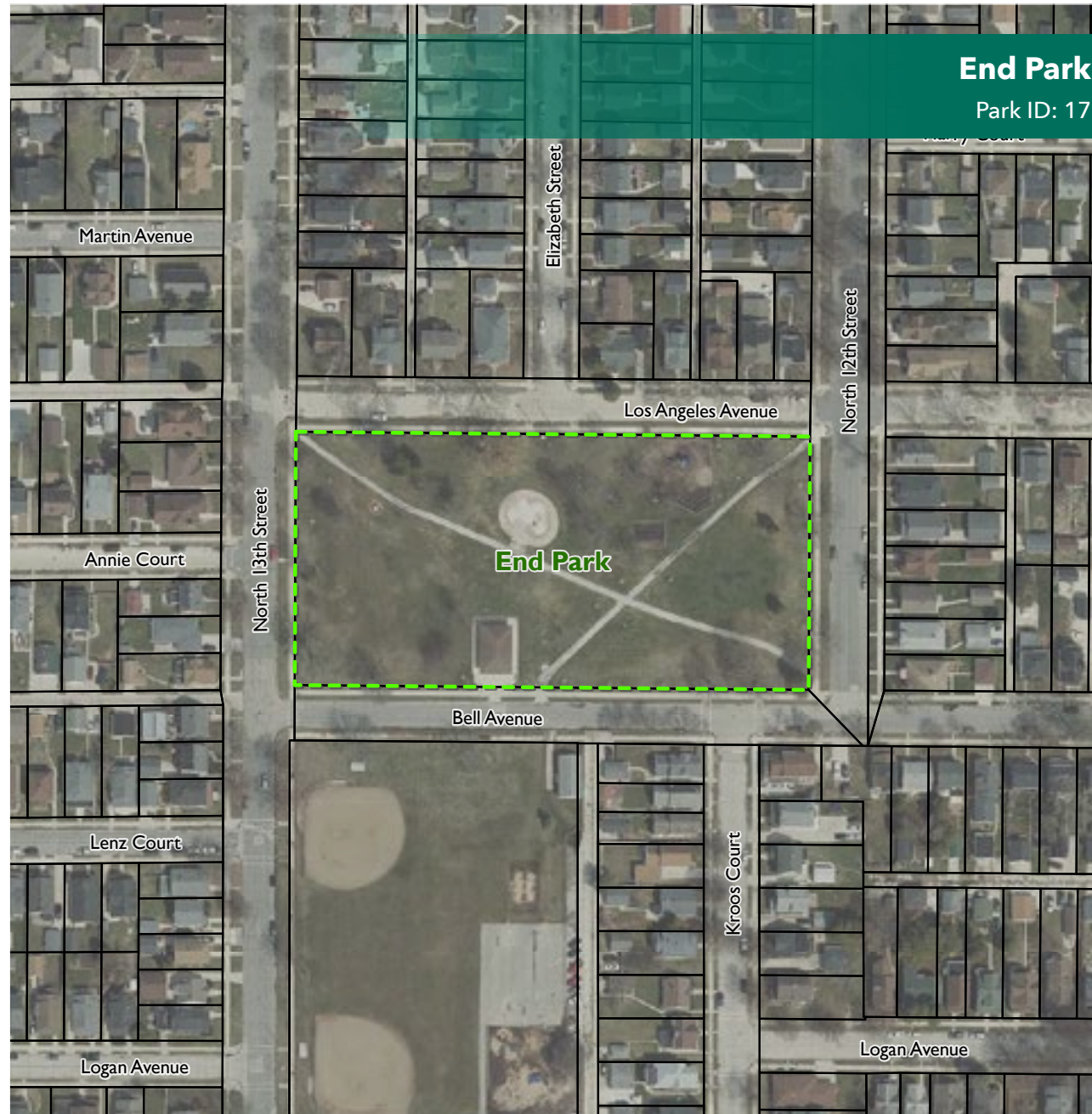
This 3.47 acre park is part of the End Park Neighborhood on the north side of Sheboygan. The park includes a rentable shelter, restrooms, playground equipment and splashpad. The park is a great place for family gatherings.

Opportunities

- Off-street parking
- Small parking lot
- Address stormwater drainage problems
- Resurface walkways
- Accessibility improvements to all facilities
- Install drain tile

Existing Facilities

- Rentable shelter
- Restrooms
- Playground equipment
- Splashpad
- Picnic areas



EVERGREEN PARK



Park Description

Location: 3000 Calumet Drive

Evergreen Park has 98.2 acres of towering white pines and hardwoods with spots of open spaces, all along the Pigeon River. The park offers miles of hiking, mountain biking and ski trails. This is a favorite spot for family picnics with several rental areas. It is also home to the Making Spirits Bright Christmas light show.

Opportunities

- Trail erosion prevention
- Additional trail connections
- Mountain biking trail plan including pump track
- Refurbish/construct new shelters and restrooms
- Lighting installations
- Pedestrian safety improvements along roadway
- Storm damage cleanup
- Repave park road

Existing Facilities

- 3 rentable shelters
- Shaw Family Playground
- Grace Pavilion
- Restrooms
- Playground equipment
- Biking/Walking/Hiking/Skiing
- Fishing
- Wooded open space
- Dog friendly (on-leash)



FOUNTAIN PARK

Park Description

Location: 1010 North 8th Street

This downtown park hosts numerous activities throughout the summer. The Farmers Market is very popular, providing fresh vegetables for purchase every Wednesday and Saturday. The performance shelter is used to provide music for many events and concerts in the park on Tuesdays. Housing insecurity has been documented in the park.

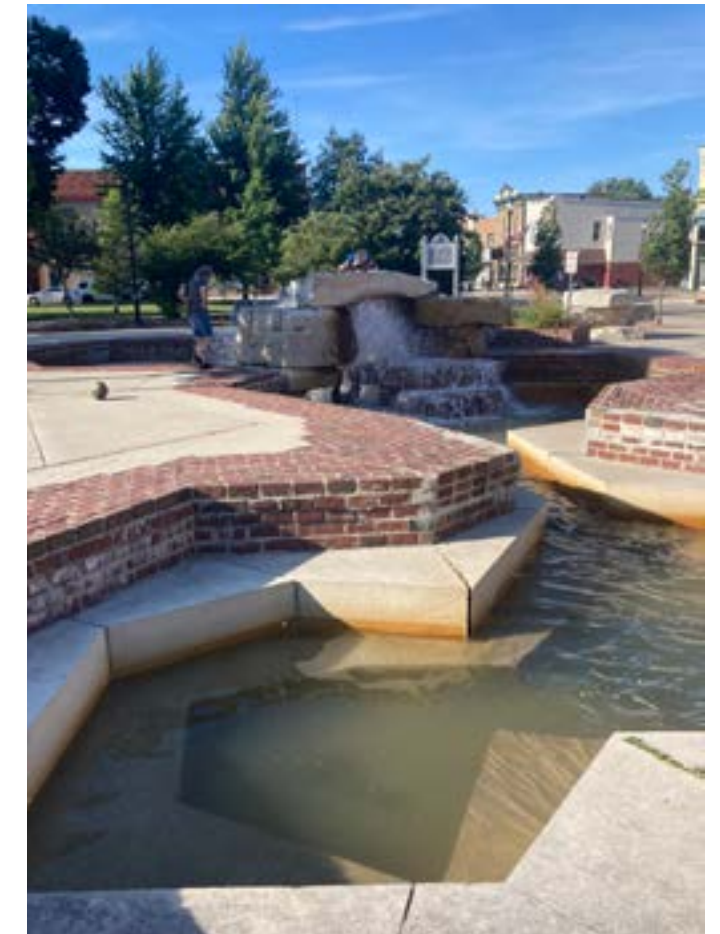
Opportunities

- Turf restoration and management plan
- Refurbish performance shelter and restrooms
- Staging areas for Farmer's Market
- Repair of fountain or replacement



Existing Facilities

- Performance shelter
- Fountain
- Historical memorials
- Restrooms
- Picnic tables and benches



FRANKLIN PARK

Park Description

Location: 1300 Broadway Avenue
This 1.4 acre park is located on the south side of Sheboygan and is part of the Franklin Park Neighborhood.

Opportunities

- Fence repair/replacement
- Move backstop
- Accessibility improvements to walkways

Existing Facilities

- Playground equipment
- Basketball half court
- Backstop
- Open space



GENERAL KING PARK

Park Description

Location: 1611 South 7th Street

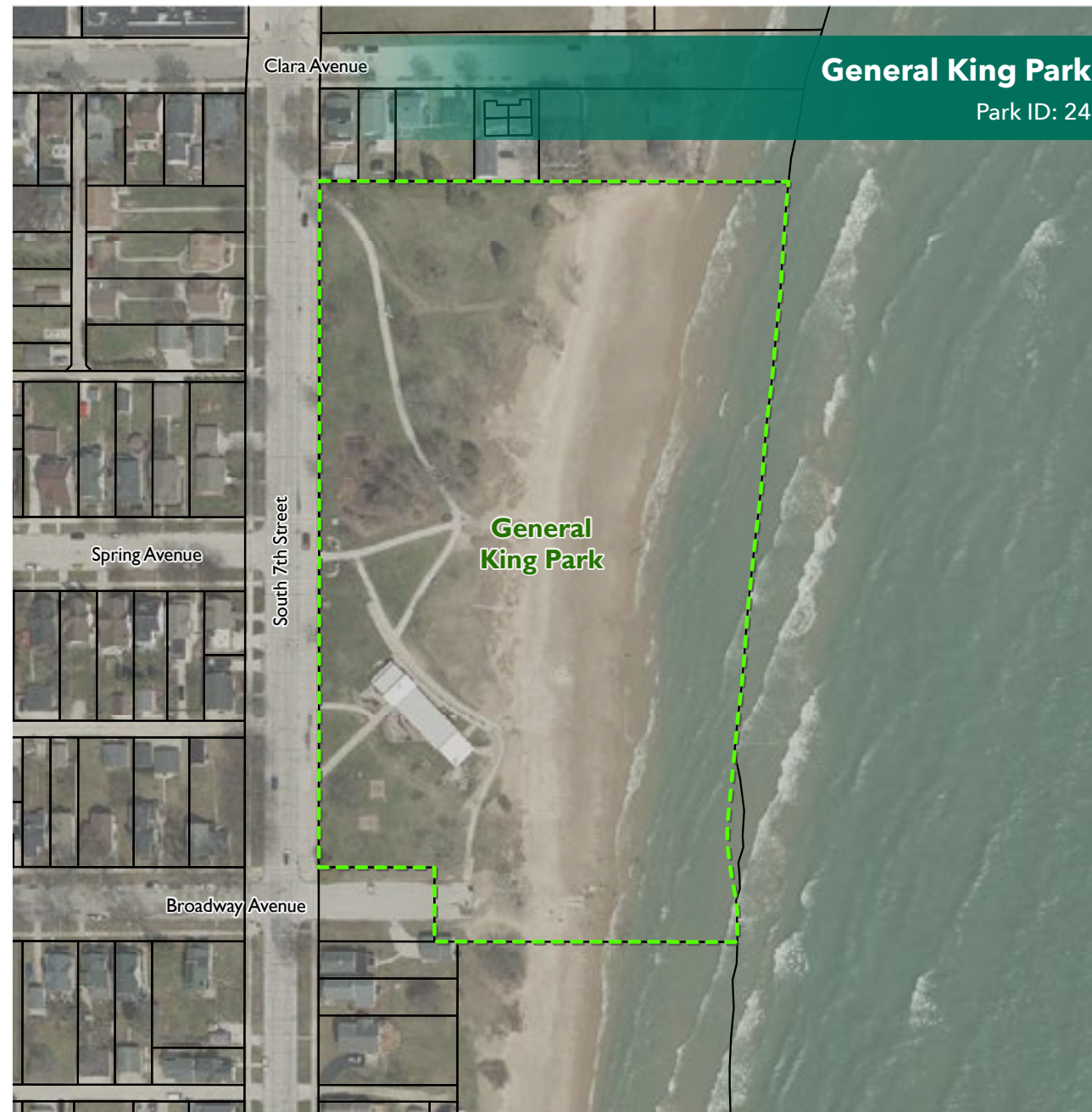
This 6.5 acre lakefront park is located on the south side of Sheboygan in the King Park Neighborhood. Built in 2009, a rentable park building, restrooms and outdoor showers overlooking Lake Michigan make this a hotspot for family reunions, weddings and all other gatherings.

Opportunities

- Off-street parking
- Improve storm sewer outfall
- Restore historic entrance and flagpole
- Accessible walkways to all facilities including lake such as cord walk and Mobimat material
- Lakeshore restoration

Existing Facilities

- Park building available for rental
- Lakefront/Beach
- Outdoor showers
- Restrooms
- Playground equipment (ages 2-5; 5-12)
- Picnic tables/benches
- Grills



GRACE PARK

Park Description

Location: 1611 South 7th Street

This 1.13 acre park is located on the north side of Sheboygan in the Fellowship Neighborhood.

Opportunities

- Accessible walkway to play equipment
- Improved landscaping buffer along adjacent residential uses

Existing Facilities

- Playground equipment
- Picnic tables



INDIAN MOUND PARK

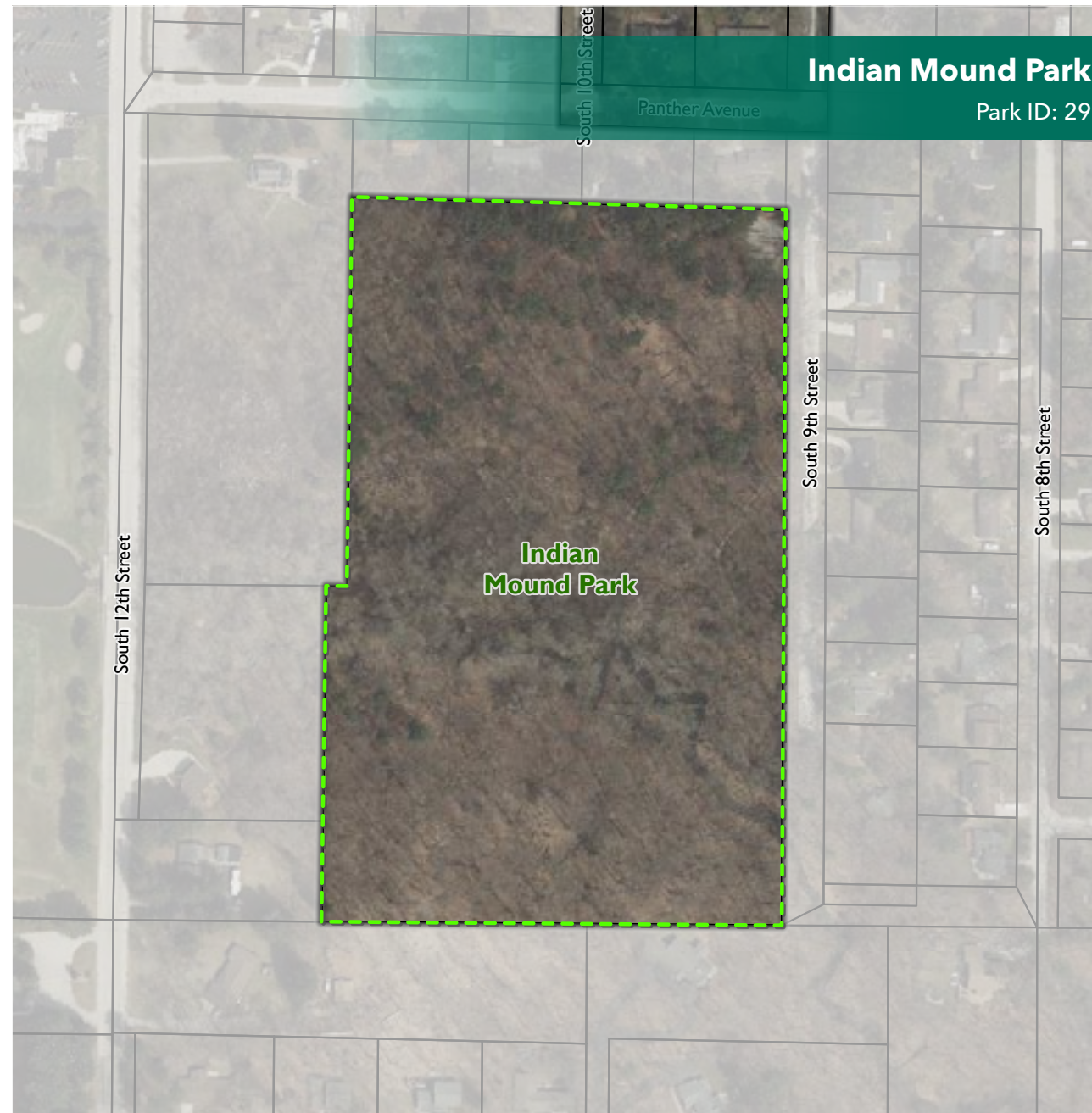
Park Description

Location: 5000 South 9th Street

This park includes the preserved mounds first known as the Kletzien Mound Group. The group originally consisted of 33 conical and effigy mounds. Today about 18 mounds remain in animal and geometric forms. A walking path for free self-guided tours provides easy viewing. A boardwalk trail traverses the site's wetlands.

Opportunities

- Landscaping
- Trail restoration/boardwalk

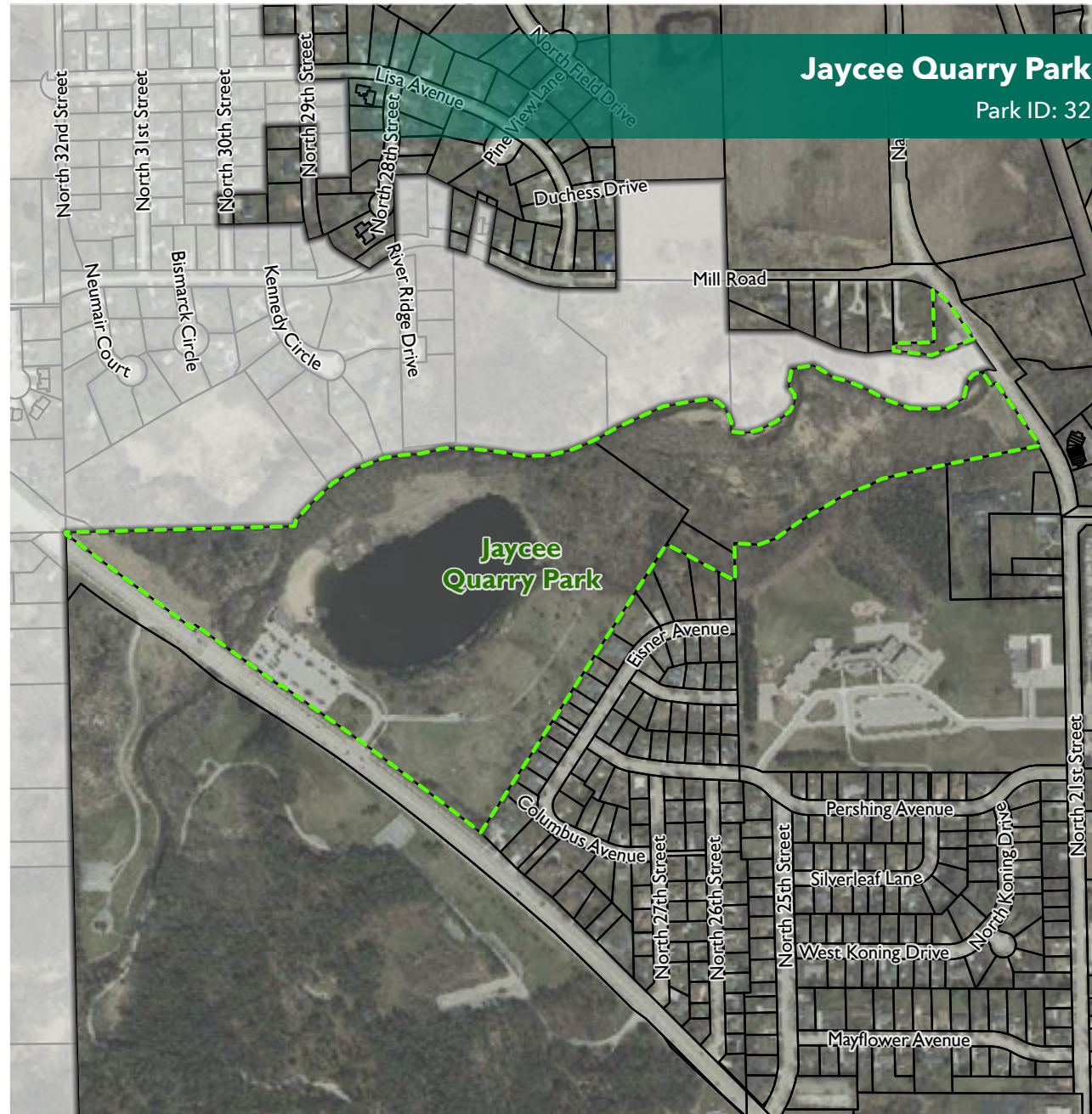


Existing Facilities

- Historic mounds
- Nature trails
- Elevated boardwalk
- Educational signage
- Wooded greenspace with natural vegetation



JAYCEE QUARRY PARK



Park Description

Location: 3401 Calumet Drive

This park was the site of a former limestone quarry that now offers an excellent spring-fed swimming area and a sand beach. In the summer the Quarry View shelter and beachfront is known as the Quarry Beach Adventure Park and offers swimming, boat rentals and other aquatic activities. The park also has a popular 23-hole disc golf course that is open year-round.

Opportunities

- Severe storm damage to wooded areas
- Riverbank erosion stabilization
- New rentable park building with restrooms
- New playground equipment
- New storage building
- New master plan
- Restroom improvements needed

Existing Facilities

- Mountain biking/hiking trails
- Quarry View Center, rentable building
- Riverfront along the Pigeon River
- Disc golf (23 holes)
- Beach/Swimming
- Dog friendly (on-leash)



JULSON PARK

Park Description

Location: Julon Court

This undeveloped natural area is located on the Sheboygan River. It includes off-street parking and supports the nearby business park.

Opportunities

- Trails
- Fishing areas
- Riverbank restoration

Existing Facilities

- Off-street parking
- Picnic tables
- Wooded greenspace with natural vegetation



KIWANIS PARK

Park Description

Location: 726 Kiwanis Park Drive

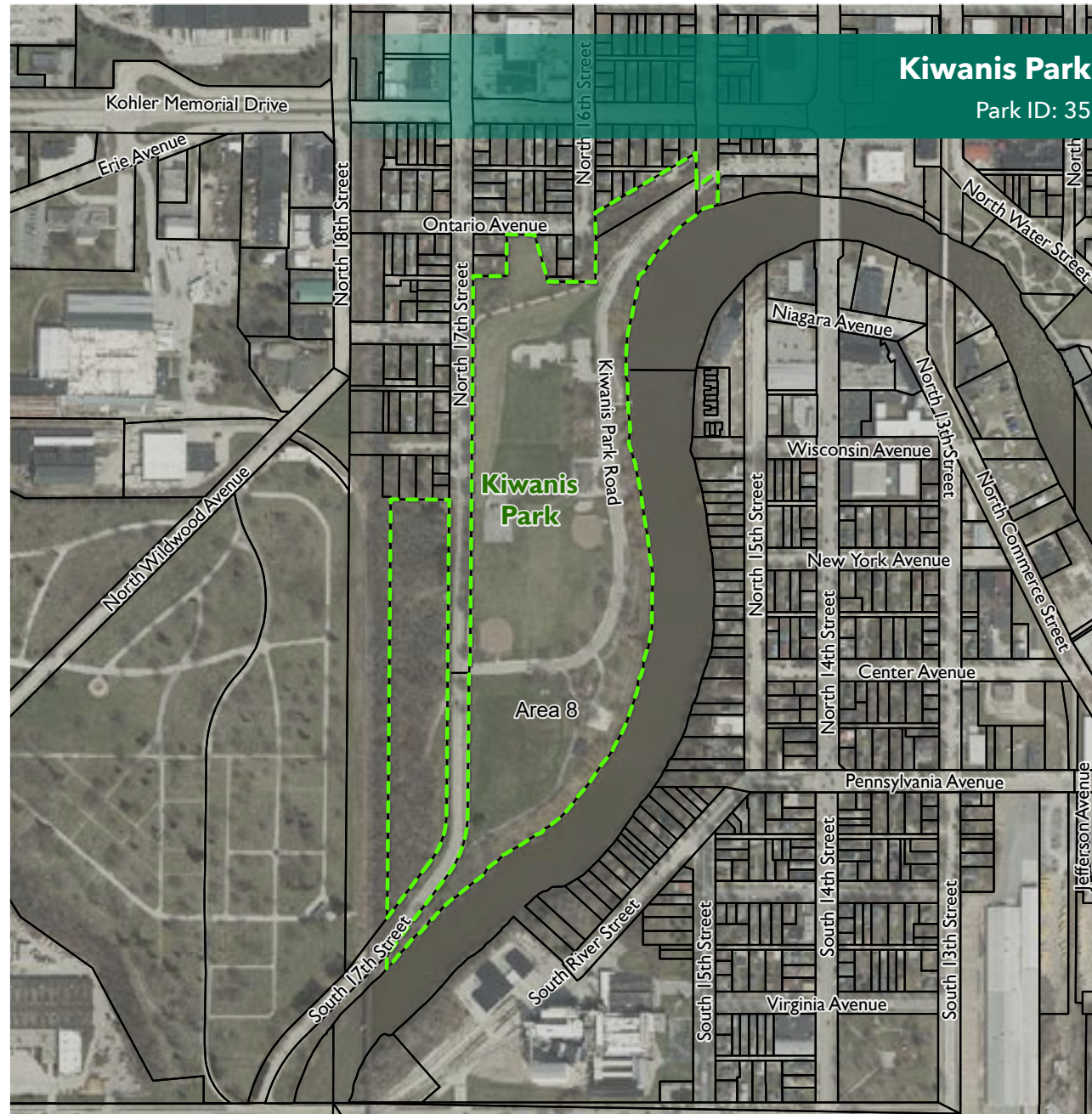
Kiwanis Park is located along the Sheboygan River. It is home to several festivals during the summer including the well-known Brat Days event. Kiwanis Park includes open spaces, baseball and softball fields, and youth football. There is a beautiful rentable enclosed park shelter and two open shelters.

Existing Facilities

- Open space
- Riverfront
- Playground equipment
- Softball fields
- Basketball court
- Fishing area
- Event area
- Restrooms
- Kiwanis Fieldhouse
- Skatepark
- Sheboygan Biergarten
- Kayak launch
- Riverfront trail
- Area 8 is dog friendly (on-leash)

Opportunities

- Security to manage vandalism
- Follow new Master Plan
- Fishing/viewing areas



LAKE VIEW PARK

Park Description

Location: 3201 Lakeshore Drive

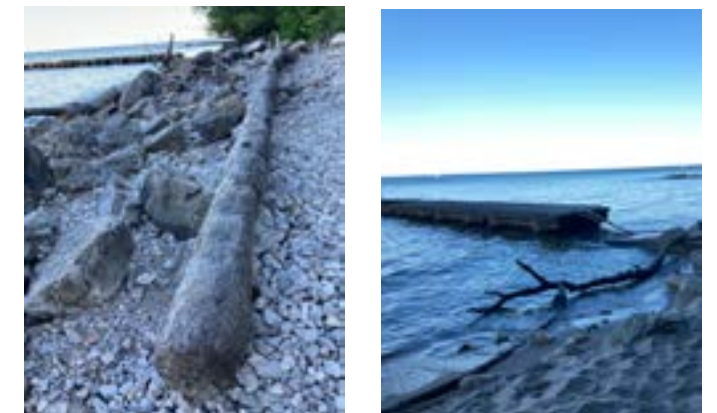
This south side park is located along the shores of Lake Michigan. It is a popular family picnicking site and offers great views and access to the beach. The park has the only dog-friendly beach in the city.

Existing Facilities

- Rentable park shelter
- Dog-friendly beach area
- Playground equipment
- Restrooms
- Off-street parking
- Wooded area
- Dog friendly (on-leash)

Opportunities

- Follow park design plan
- New park shelter placed closer to the lake overlook
- Parking area to better utilize the view of the lake
- Improve stormwater drainage of property
- Possible camp sites
- Accessibility improvements
- Log the wooded area of the park



MANOR HEIGHTS

Park Description

Location: Lakeshore Road

This undeveloped park property is on Lakeshore Road along the Pigeon River between Pine Bluff Drive and Koehler Drive.

Opportunities

- Improve trails and connect to Jaycee Quarry Park
- Riverbank restoration

Existing Facilities

- Wooded and riverside greenspace with natural vegetation



MOOSE PARK



Park Description

Location: 1801 Indiana Avenue

This 3.9 acre long narrow park stretches between Indiana Avenue and Georgia Avenue on the south side of Sheboygan. Moose Park is part of the Indiana Corridor Neighborhood.

Opportunities

- Improved parking area
- Potential for bike park amenities
- Small fenced dog park
- Hardscape surfacing

Existing Facilities

- Playground equipment
- Basketball
- Open space
- Dog friendly (on-leash)



NORTH POINT PARK

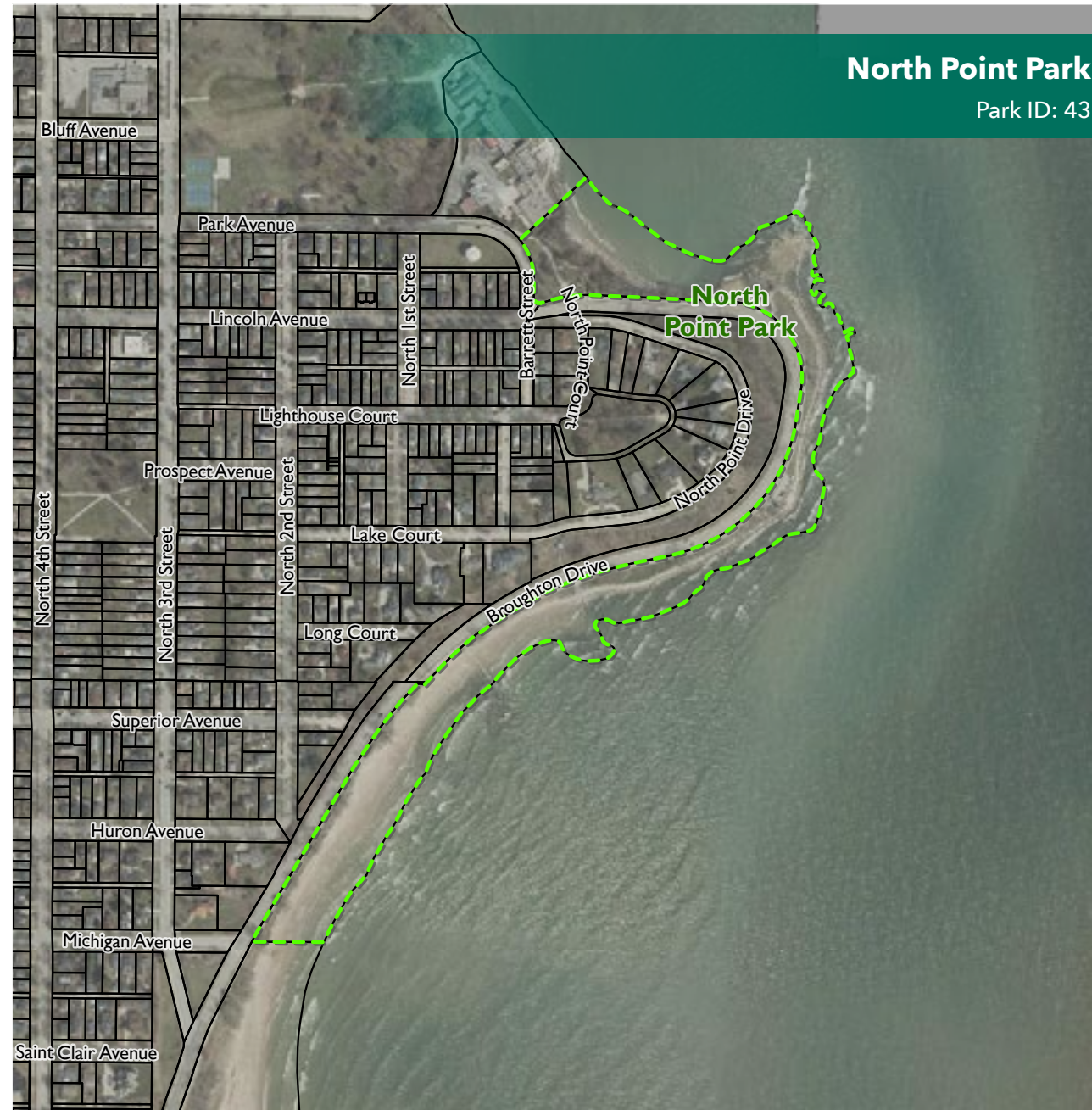
Park Description

Location: Broughton Drive

This park provides lake access and walking paths circling the city's north point. The trail includes access to the historical marker for Wisconsin's Maritime Trails, marking the location of the historic Schooner Gallinipper Shipwreck.

Opportunities

- Bluff restoration/stabilization



Existing Facilities

- Walking paths
- Overlook
- Seating/benches
- Pet-friendly area (on-leash)
- Small shelter
- Off-street parking with lake view



NORTHEAST PARK

Park Description

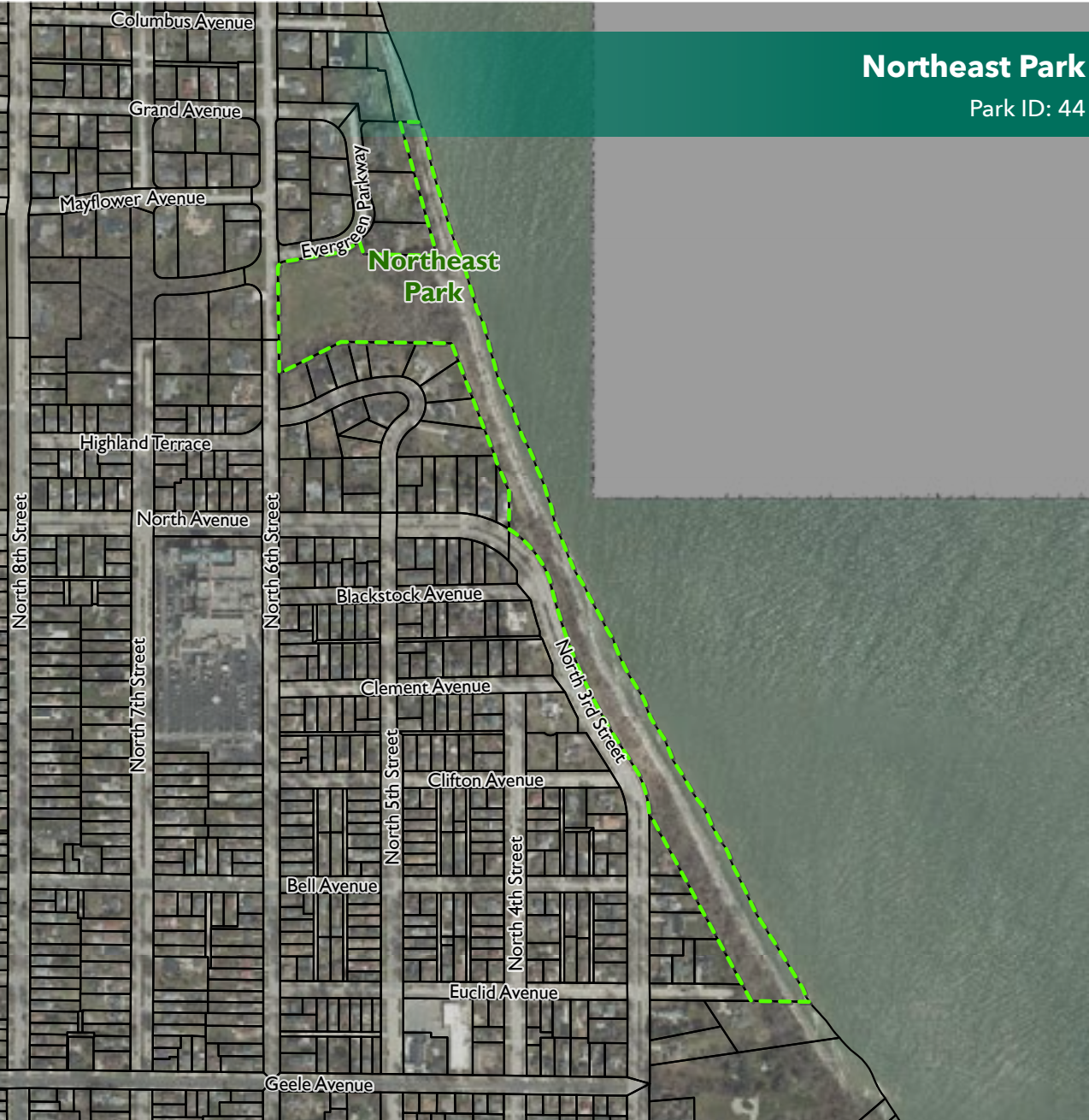
Location: 2901 North 6th Street
 This 12 acre lakefront park is located on the north side of Sheboygan in the North Lake Neighborhood.

Existing Facilities

- Youth soccer
- Lakefront access
- Beach
- Benches
- Open space

Opportunities

- Off-street parking
- Invasive species removal
- Lakeshore restoration
- Storm sewer outfall improvements
- Additional picnic areas
- Park signage



OPTIMIST PARK

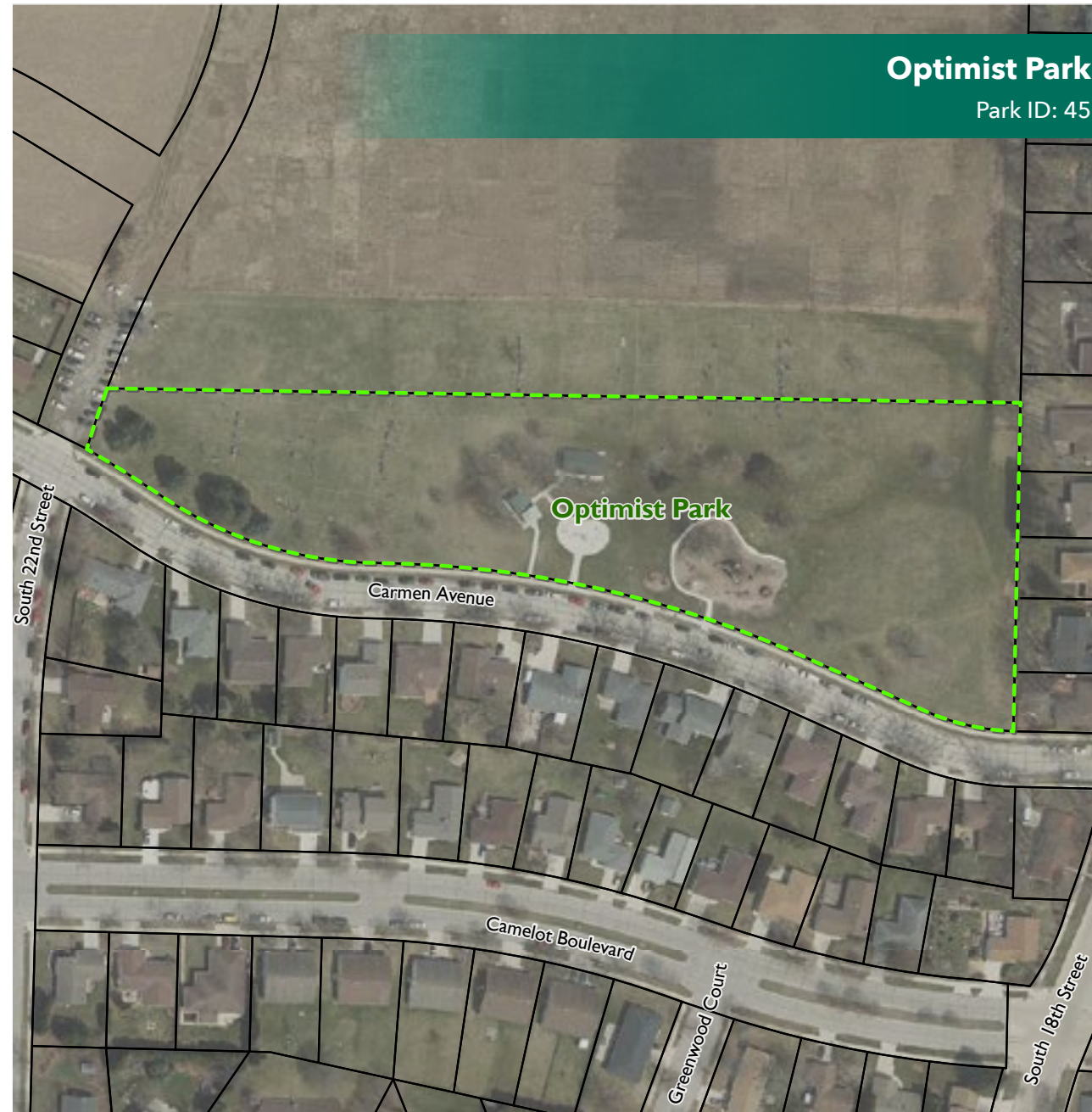
Park Description

Location: 2010 Carmen Avenue

This 5 acre park is located on the south side of Sheboygan. With a rentable shelter, restrooms and playground equipment, the park is great for family and neighborhood gatherings. Soccer and youth baseball are also held in the park. Optimist Park is adjacent to the Hmong garden rental lots.

Opportunities

- Off-street parking
- Basketball court



Existing Facilities

- Rentable shelter
- Restrooms
- Playground equipment
- Youth soccer
- Youth baseball
- Open space
- Splashpad



PIGEON RIVER ESTUARY

Park Description

Location: 4001 Lakeshore Road

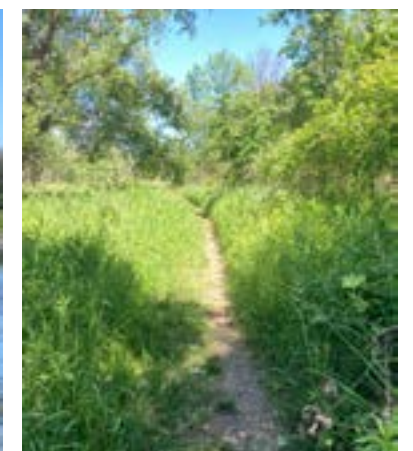
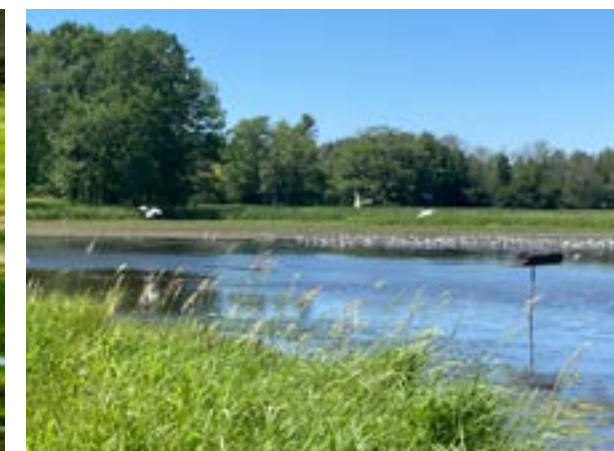
This environmental area sits near the mouth of the Pigeon River into Lake Michigan. The park contains a nature trail with views of the Pigeon River.

Opportunities

- Signage
- Develop additional trails
- Accessibility improvements to walkways
- Removal of invasive species
- Boardwalks over wet areas

Existing Facilities

- Seating
- Nature/Walking trails
- Off-street parking
- New tree and shrub planting



RIVERSIDE PARK

Park Description

Location: 640 North Water Street

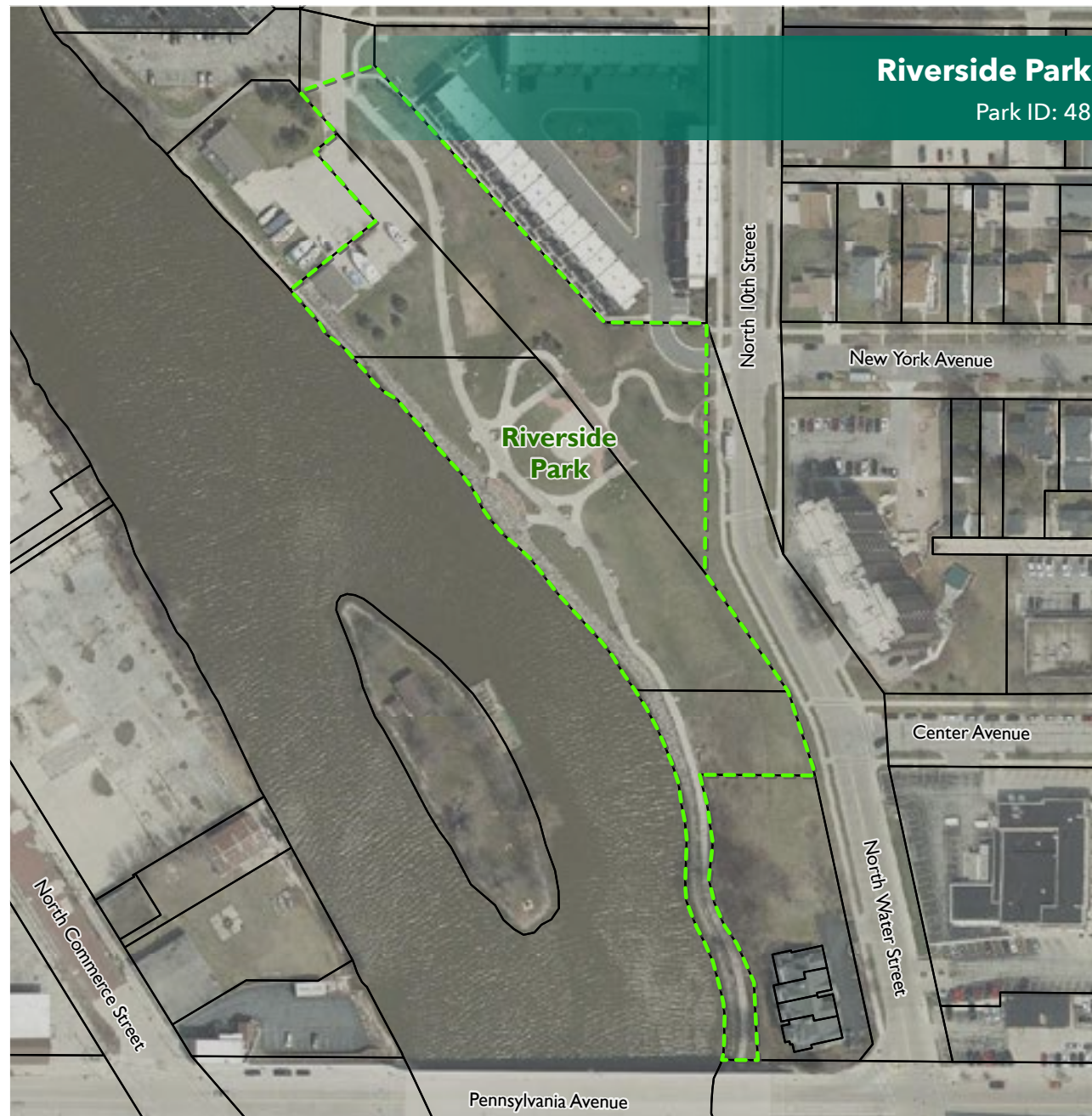
This park sits on the banks of the Sheboygan River and provides downtown riverfront access and views. The park has several walking trails directing people to gathering spaces and amenities, making it a dynamic space for different groups of people.

Existing Facilities

- Seating
- Walking paths
- Riverfront
- Half-court basketball

Opportunities

- Low maintenance landscaping



ROOSEVELT PARK

Park Description

Location: 1103 Mead Avenue

This 6.5 acre park on the south side of Sheboygan has a rentable park building, playground equipment, two baseball/softball fields, tennis, and basketball courts with plenty of open space.

Opportunities

- Off-street parking

Existing Facilities

- Playground equipment
- 2 softball/baseball fields
- Basketball (full-court)
- Rentable Roosevelt Fieldhouse
- 2 tennis courts/pickleball
- Restrooms
- Open space



ROTARY RIVERVIEW PARK

Park Description

Location: 517 Riverfront Drive

This riverfront park features a boardwalk along the Sheboygan River and plenty of open space.

Opportunities

- Riverbank erosion stabilization



Existing Facilities

- Walking paths
- Restrooms
- Boardwalk
- Open Space
- Shelters
- Seating
- Picnic tables



SHEBOYGAN DOG PARK

Park Description

Location: 4108 South 18th Street

This park, shared with the Town of Wilson, offers dog-friendly amenities and plenty of open space for dogs to play. The park perimeter is fenced for security.

Opportunities

- Signage
- Bring water into the park
- Shade structures
- Trail improvement
- Dog amenities

Existing Facilities

- Dog run
- Open space
- Wetlands
- Fencing



SHERIDAN PARK

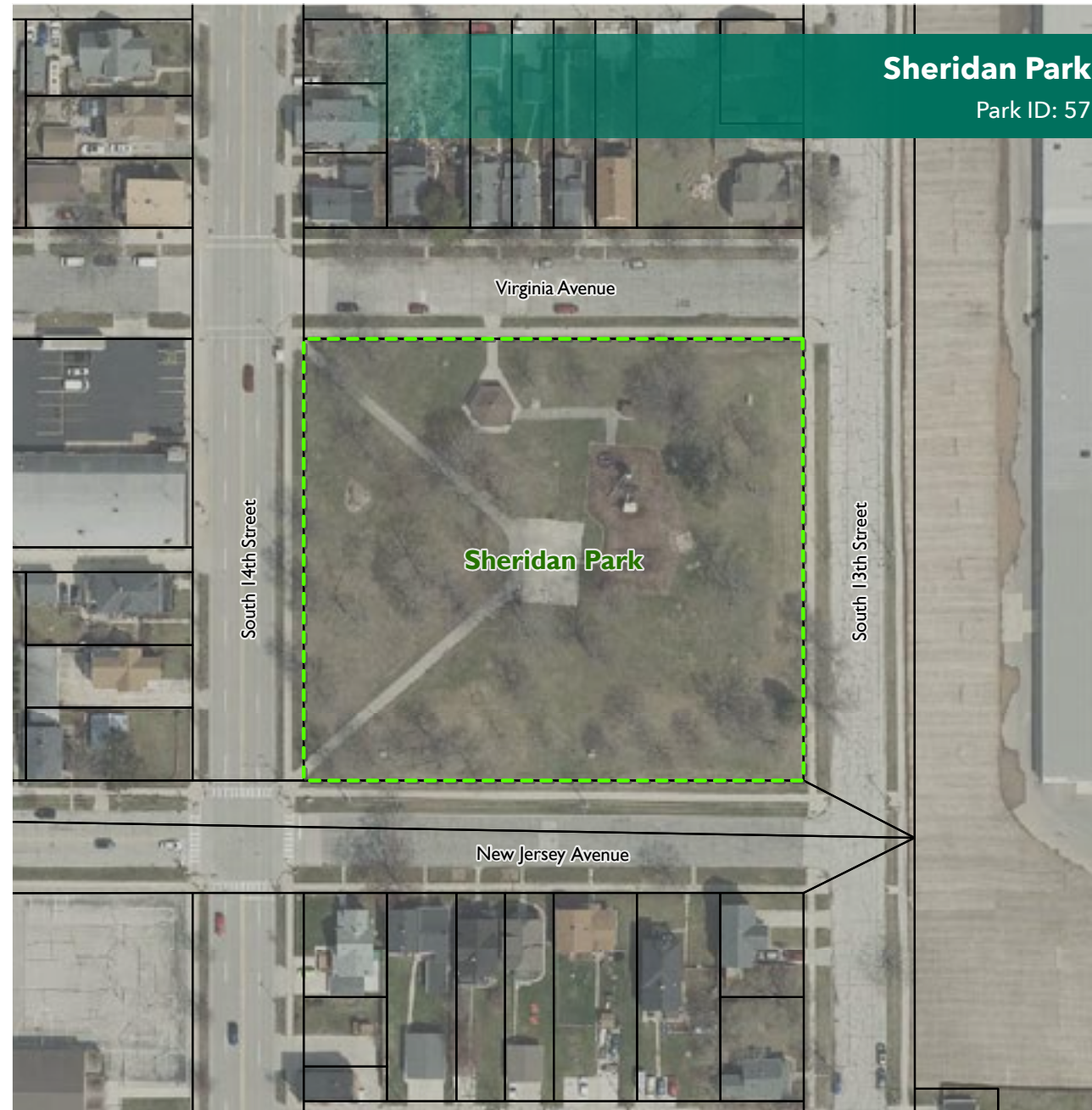
Park Description

Location: 701 South 14th Street

This 2.62 acre park features playground equipment, basketball court, picnic areas, and a small shelter along with many trees for shade.

Existing Facilities

- Seating
- Picnic tables
- Basketball
- Small shelter
- Temporary restrooms



SOUTH PIER FISH CLEANING STATION



Park Description

Location: 689 South Pier Drive

This space offers a location to clean freshly caught fish nearby the river with a shaded overhang.

Existing Facilities

- Fish cleaning station
- Restrooms
- Parking lot



SOUTH PIER TURNAROUND

Park Description

Location: 226 South Pier Drive

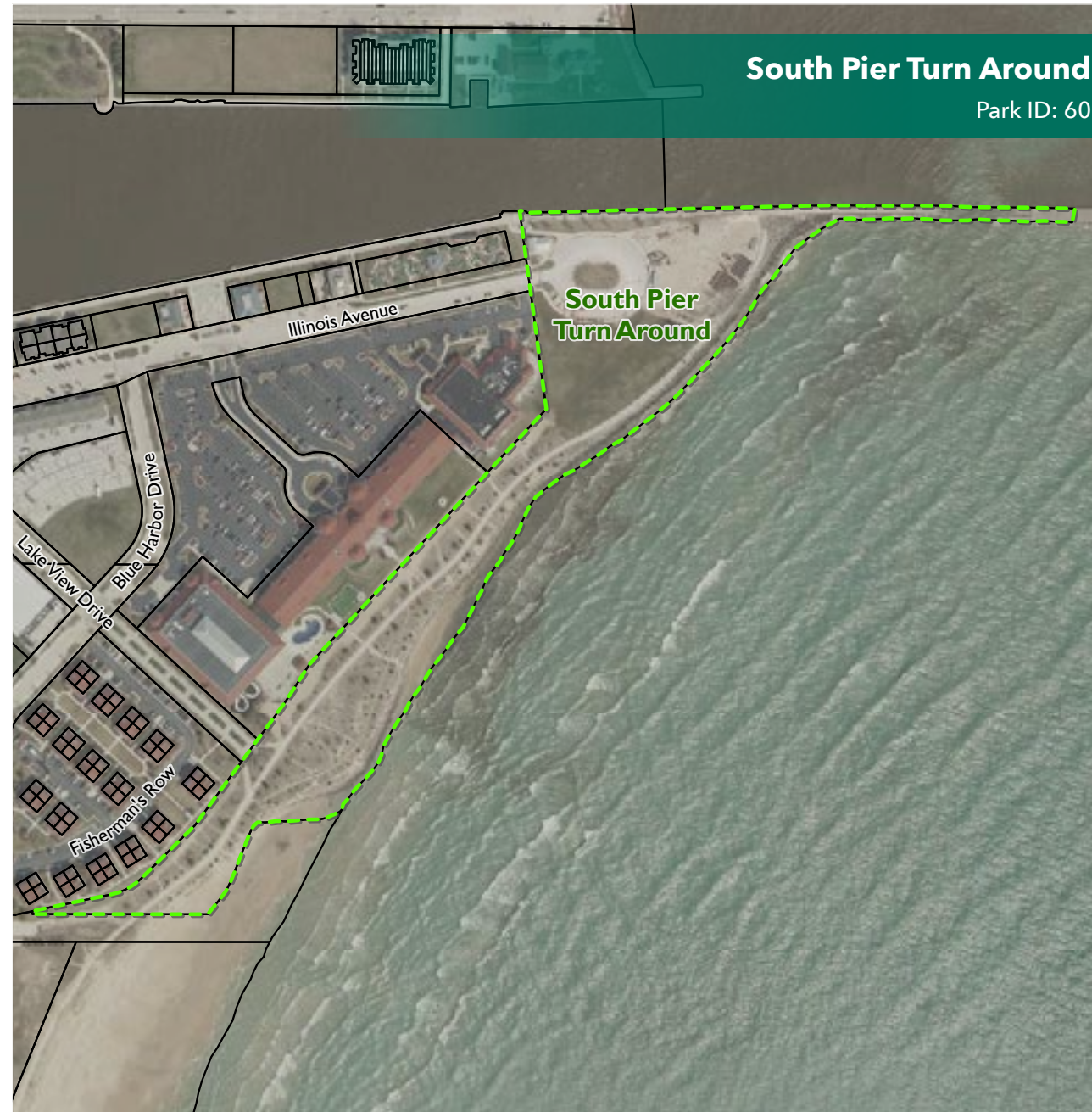
A public space located just north of Southside Beach, South Pier Turnaround offers a wonderful view of Lake Michigan with ample grassy space and parking.

Opportunities

- Rentable shelter

Existing Facilities

- Seating
- Picnic tables
- Open space
- Walking path
- Restrooms
- Pier access
- Pier fishing



SOUTH SHORE PARK

Park Description

Location: Lakeshore Drive & S. 7th Street

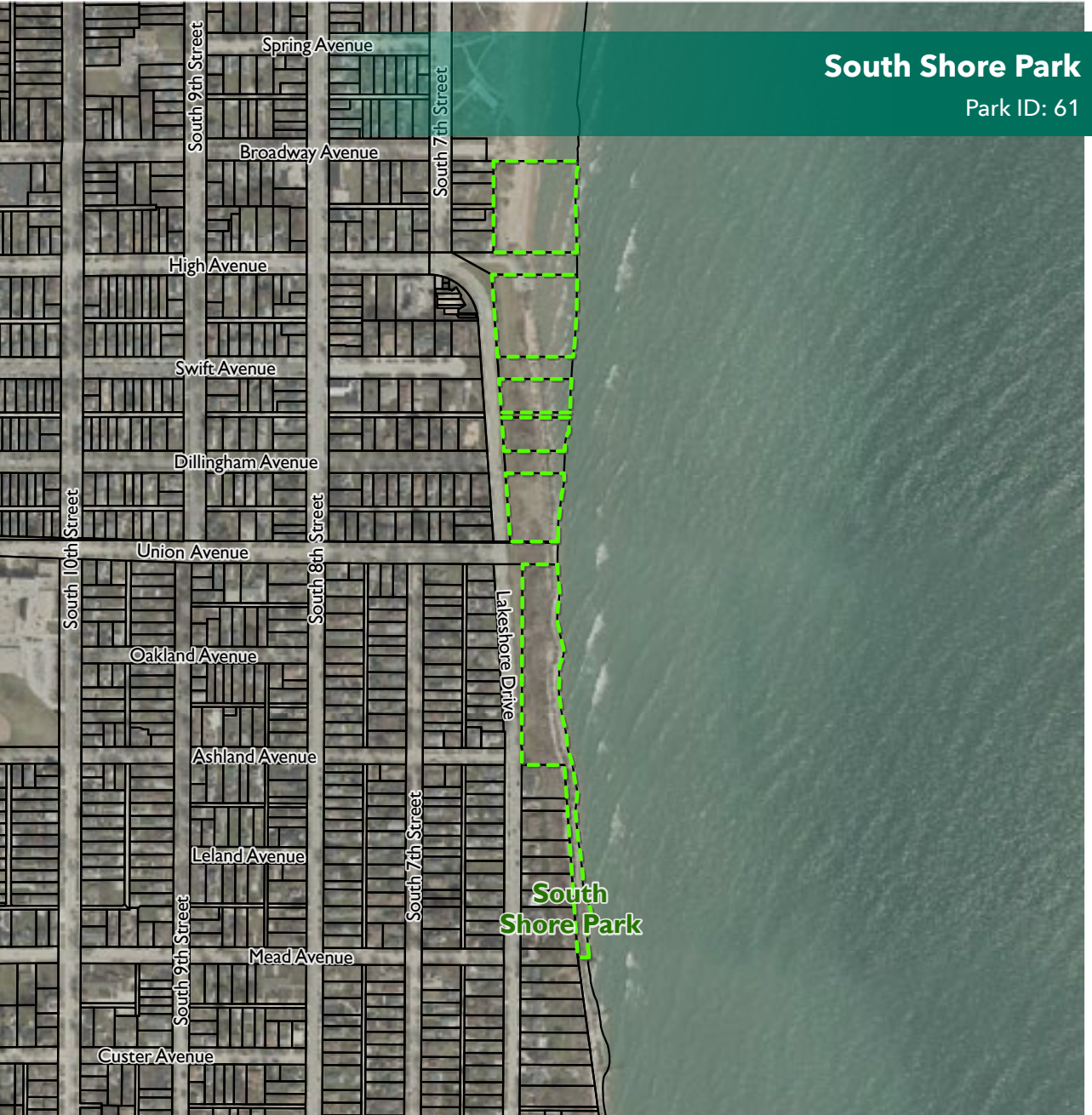
South Shore Park offers beachfront access with limited parking.

Existing Facilities

- Beach access
- Open space

Opportunities

- Seating and viewing areas
- Multi-purpose pathway
- Dog-friendly on-leash beach area



SOUTHSIDE BEACH

Park Description

Location: 501 Indiana Avenue

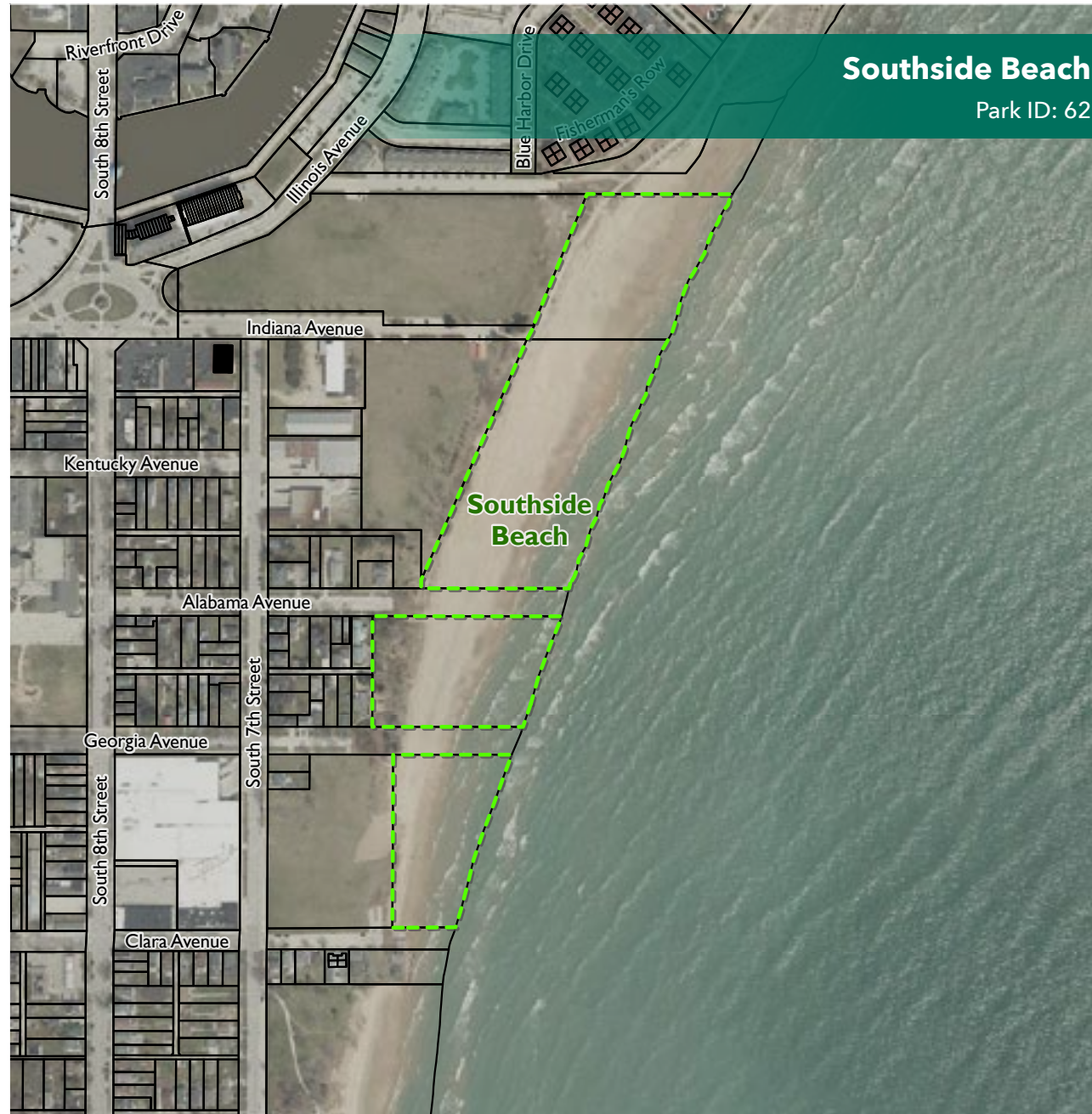
Southside Beach offers an expansive beachfront with access to a recreational trail along the shore.

Opportunities

- Dog friendly on-leash beach area
- Trail from Indiana Avenue south to Clara Avenue, along western border of beach

Existing Facilities

- Beach access
- Open space
- Walking path



STONEBROOK CROSSING

Park Description

Location: 5509 Moenning Road

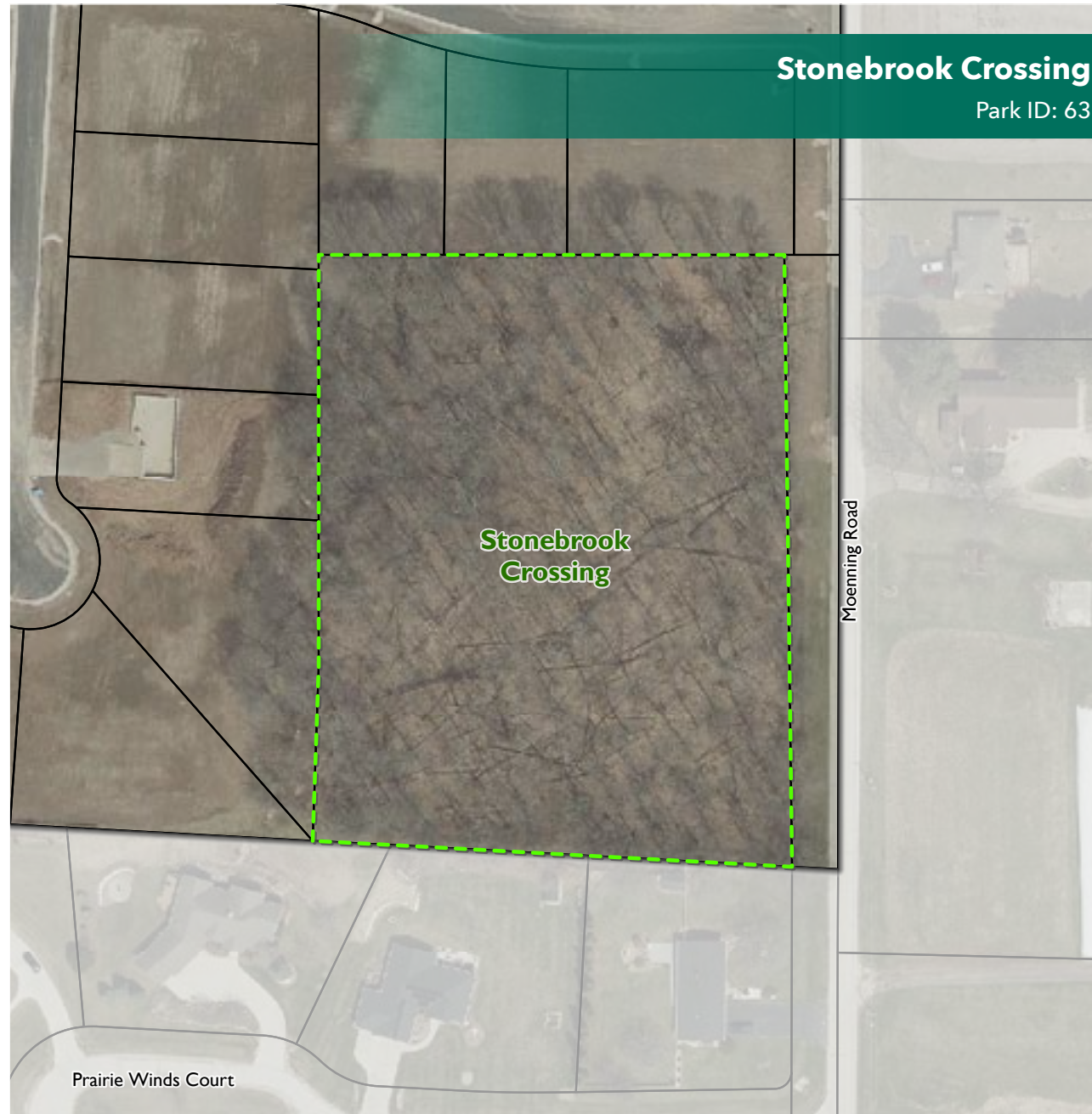
Stonebrook Crossing is a forested area adjacent to a recent residential subdivision.

Existing Facilities

- Undeveloped 0.5-acre lot
- Wooded lot

Opportunities

- Trail on wooded property
- Playground equipment
- Pathways
- Shade structure



VETERANS MEMORIAL PARK

Park Description

Location: 2220 Union Avenue

This 7.45 acre south side park offers a rentable shelter and restrooms, playground equipment, tennis courts, picnic areas, sports fields, and a Vietnam Veterans of Sheboygan Tank Memorial.

Opportunities

- Basketball court improvements
- Accessible walkways
- Add splashpad
- Improve tennis/pickleball courts
- Off-street parking

Existing Facilities

- Playground equipment
- 2 Softball/baseball fields
- Tennis courts
- Restrooms
- Rentable shelter
- Picnic areas/tables
- Open space



VOLLRATH PARK

Park Description

Location: 2001 N. 3rd Street

This 16.13 acre lakeside park is home to Wisconsin's largest disc golf course as well as many other amenities including "The Shack," which offers refreshments and disc golf gear.

Opportunities

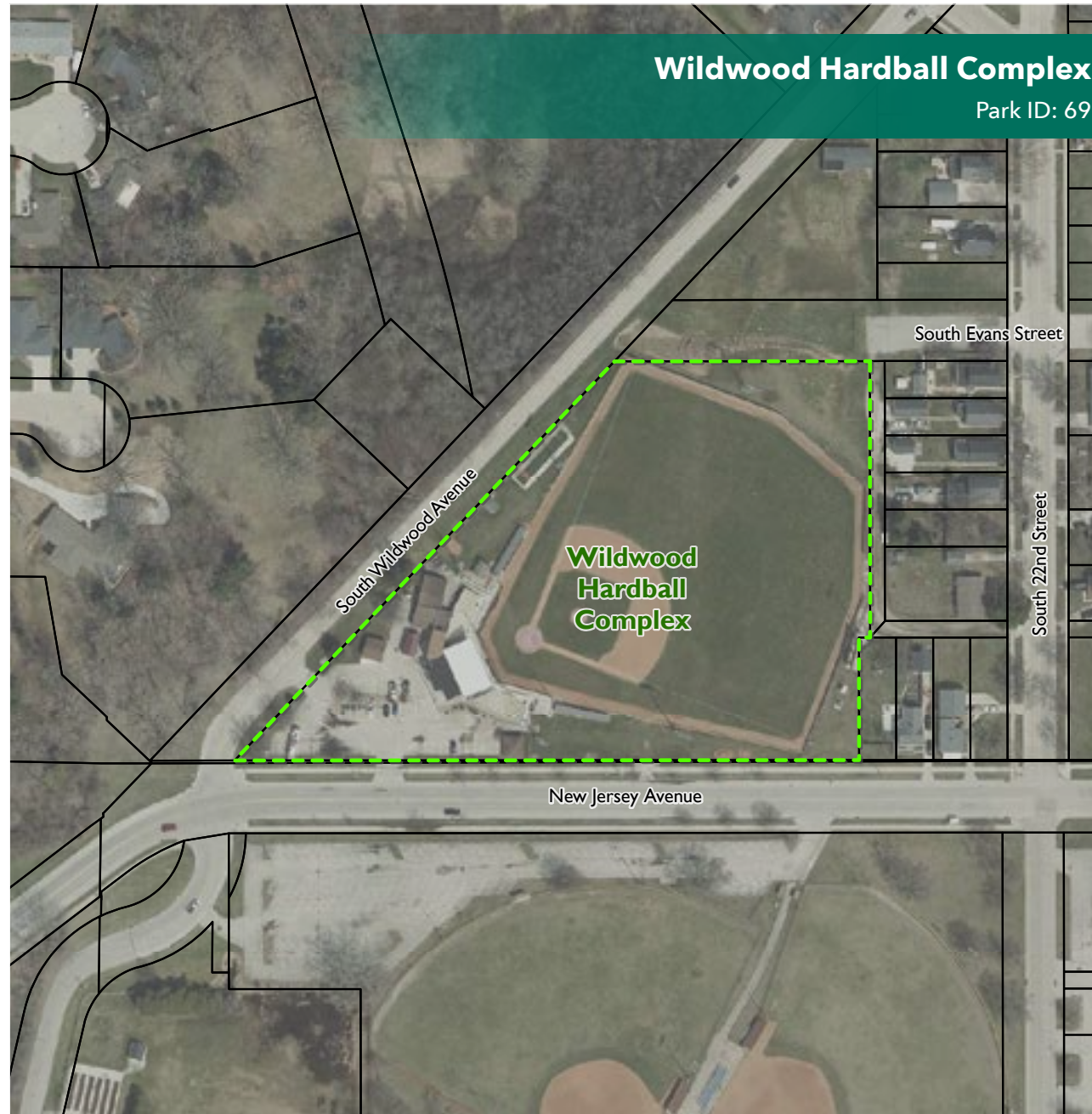
- Update lighting
- Off-street parking
- Disc golf course improvements
- Rebuild retaining walls
- Erosion control

Existing Facilities

- Disc golf course
- Rentable shelter
- Restrooms
- 2 Tennis courts
- 3 pickleball courts
- Playground equipment
- Basketball court
- Picnic areas/tables



WILDWOOD HARDBALL COMPLEX



Park Description

Location: 2276 New Jersey Avenue

This park is home to the Sheboygan A's baseball, one of the top semi-pro baseball organizations in the Midwest.

Opportunities

- Follow Park Plan

Existing Facilities

- Baseball field
- Seating
- Bleachers
- Concessions
- Covered shelter

Image credit: Wildwood Baseball Park via Facebook



WILDWOOD SOFTBALL COMPLEX



Park Description

Location: 1030 S. 22nd Street

This park is home to three softball fields used for adult softball.

Existing Facilities

- Softball fields
- Seating
- Bleachers
- Playground equipment
- Concession stand
- Shelter
- Restrooms

▼ Image credits: Mid-Lake Softball via Facebook

Opportunities

- New concession stand, restroom, and meeting room
- New hardscape areas



WORKERS WATER STREET PARK



Park Description

Location: 938 N. Water Street

This park features a family-friendly interactive splash pad along the river as well as seating and picnic areas, a rentable shelter, and playground.

Opportunities

- Outdated playground equipment
- Riverbank erosion stabilization

Existing Facilities

- Interactive splash pad
- Seating
- Walking path
- Restrooms
- Playground equipment
- Riverfront
- Picnic tables
- Non-rentable shelter



▲ Image credit: City of Sheboygan