



Mercury Racing 50th Anniversary Sheboygan Event Application

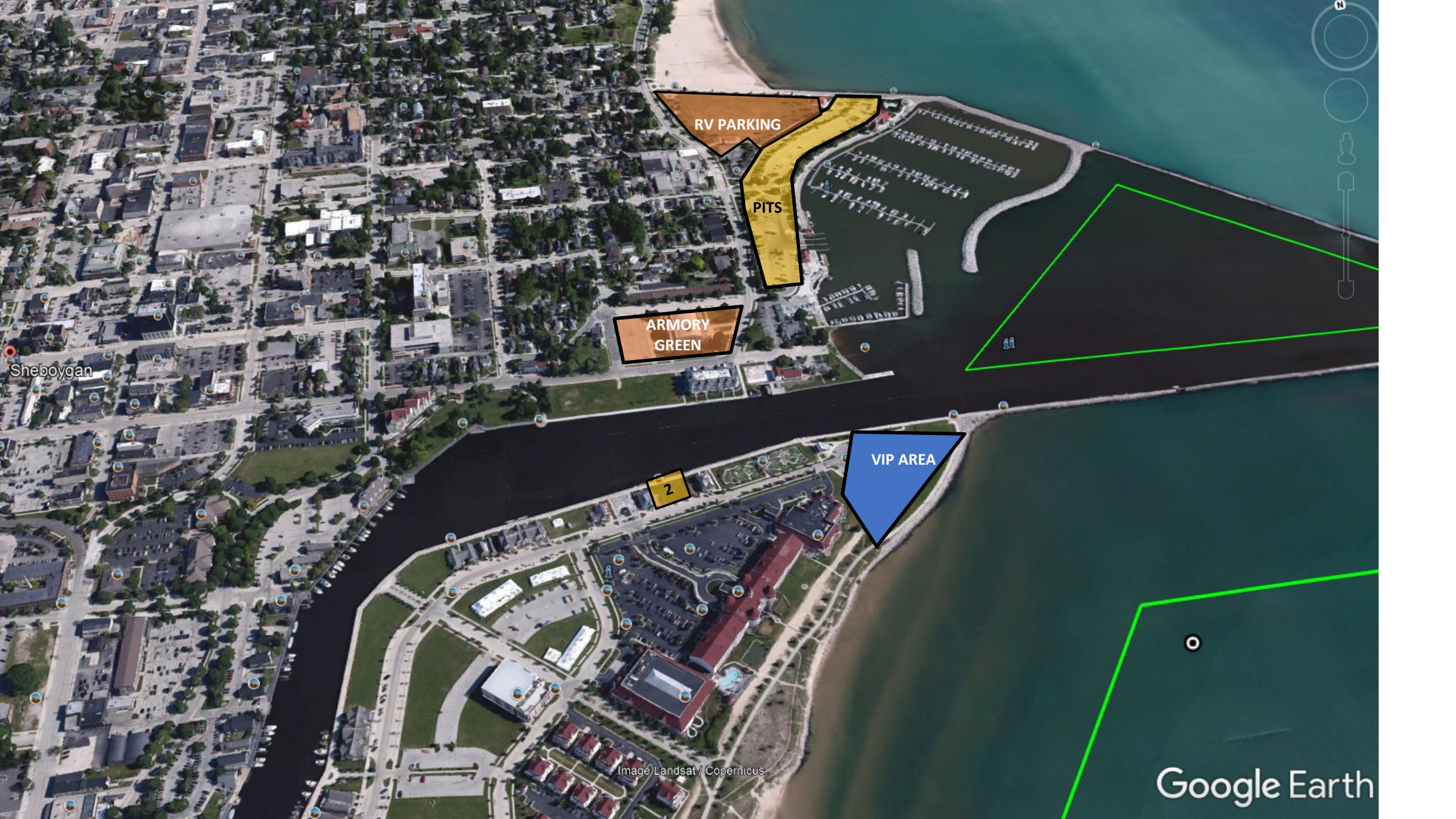
August 11th -13th 2023





OVERALL SITE PLANS





RV PARKING

PITS

ARMORY
GREEN

VIP AREA

2

Image Landsat / Copernicus

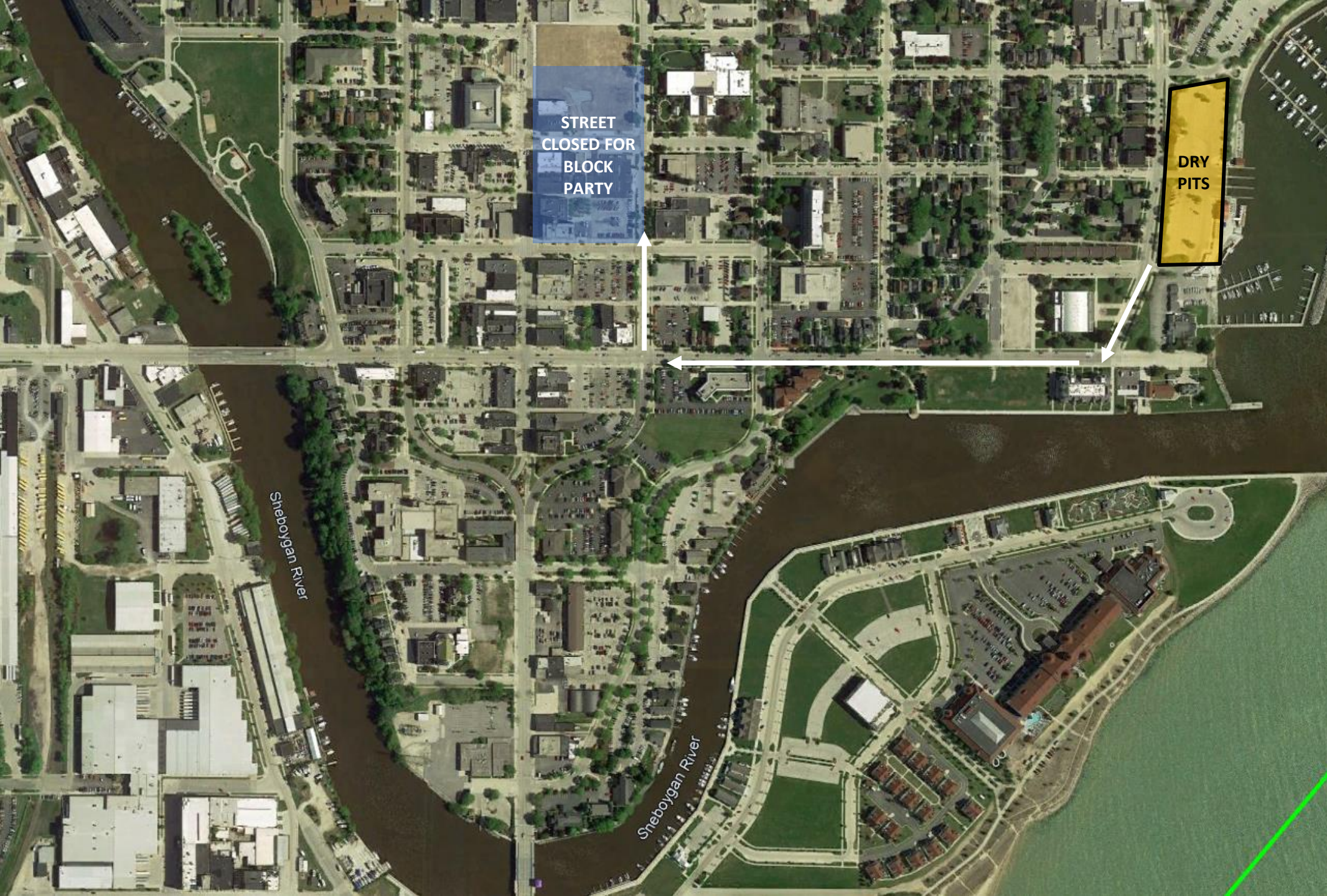
Google Earth

Sheboygan



**FRIDAY NIGHT BLOCK PARTY & RIVER BOAT PARADE
RACE TEAM MEET AND GREET**





STREET
CLOSED FOR
BLOCK PARTY

DRY
PITS

Sheboygan River

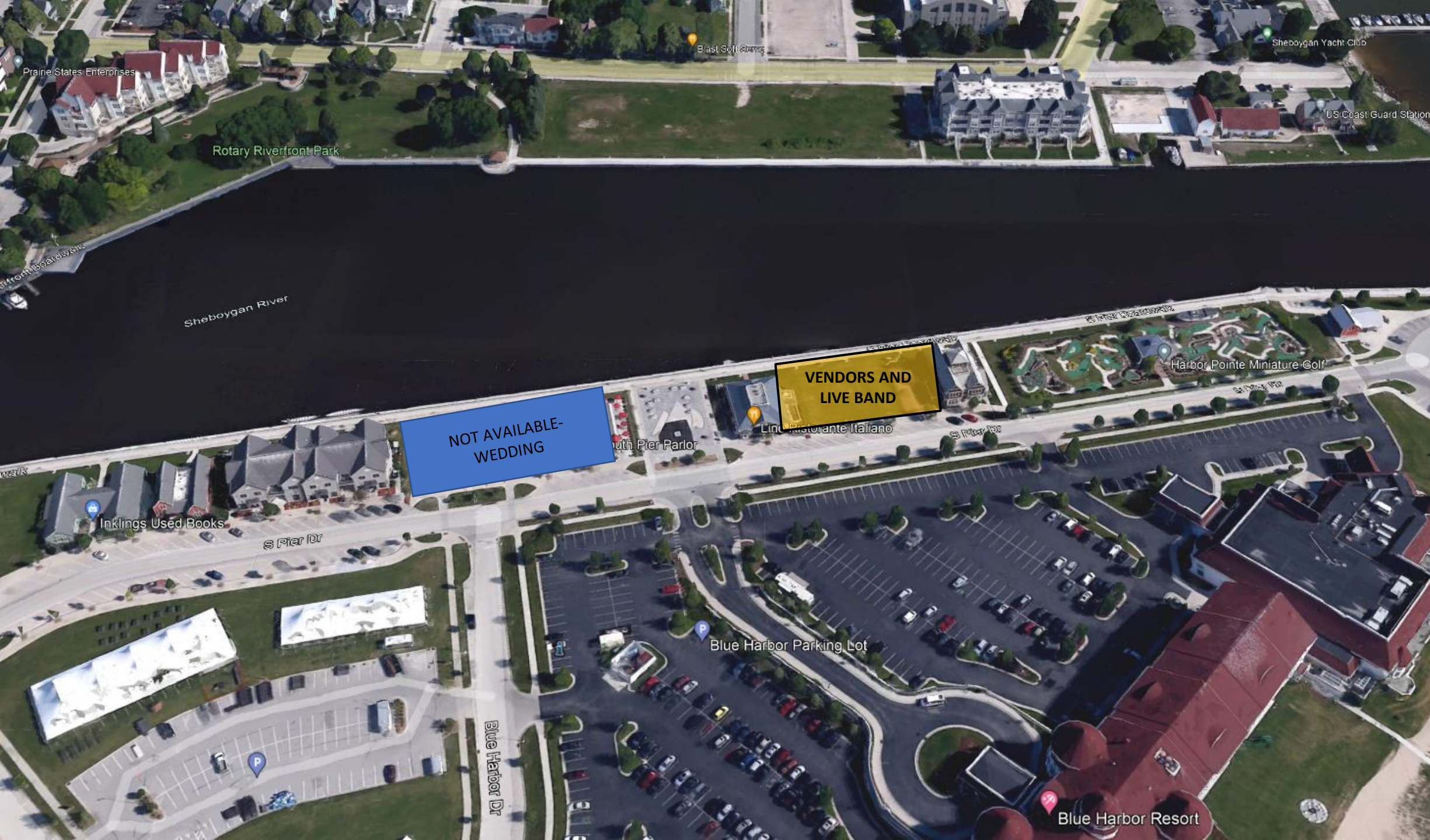
Sheboygan River



VENDORS AND FOOD TRUCKS

CLASS 1 BOATS – 90FT

MILITARY
DISPLAY



Prairie States Enterprises

Rotary Riverfront Park

East Soft Serve

Sheboygan Yacht Club

US Coast Guard Station

Sheboygan River

VENDORS AND
LIVE BAND

NOT AVAILABLE -
WEDDING

Harbor Pointe Miniature Golf

Inklings Used Books

S Pier Dr

Blue Harbor Parking Lot

Blue Harbor Dr

Blue Harbor Resort

SATURDAY NIGHT – “WINNERS CIRCLE” BOAT PARADE
300ft OFF MOORING SPACE FOR PARADE FOR MEET AND GREET.

Sheboygan River

RACE TEAM BOATS

151 METERS / 495FT

SPACE NOT AVAILABLE
- WEDDING

LIVE MUSIC /
BEER GARDEN

TEAMS
AND
VENDORS

STAGE

Harbor Pointe Miniature Golf

S Pier Dr

S Pier Dr

S Pier Boardwalk

S Pier Boardwalk

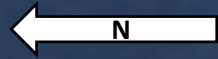
South Pier Pier

Lino Ristorante Italia



RACECOURSES





F1 - 1 MILE COURSE

OFFSHORE - 6 MILE COURSE

START RUN 1.5 miles

ELLIS HISTORICAL DISTRICT

Sheboygan
Sheboygan

SOUTH PIER

KING PARK

SOUTH LAKE

FARNSWORTH

ROOSEVELT PARK

DEER GAZE

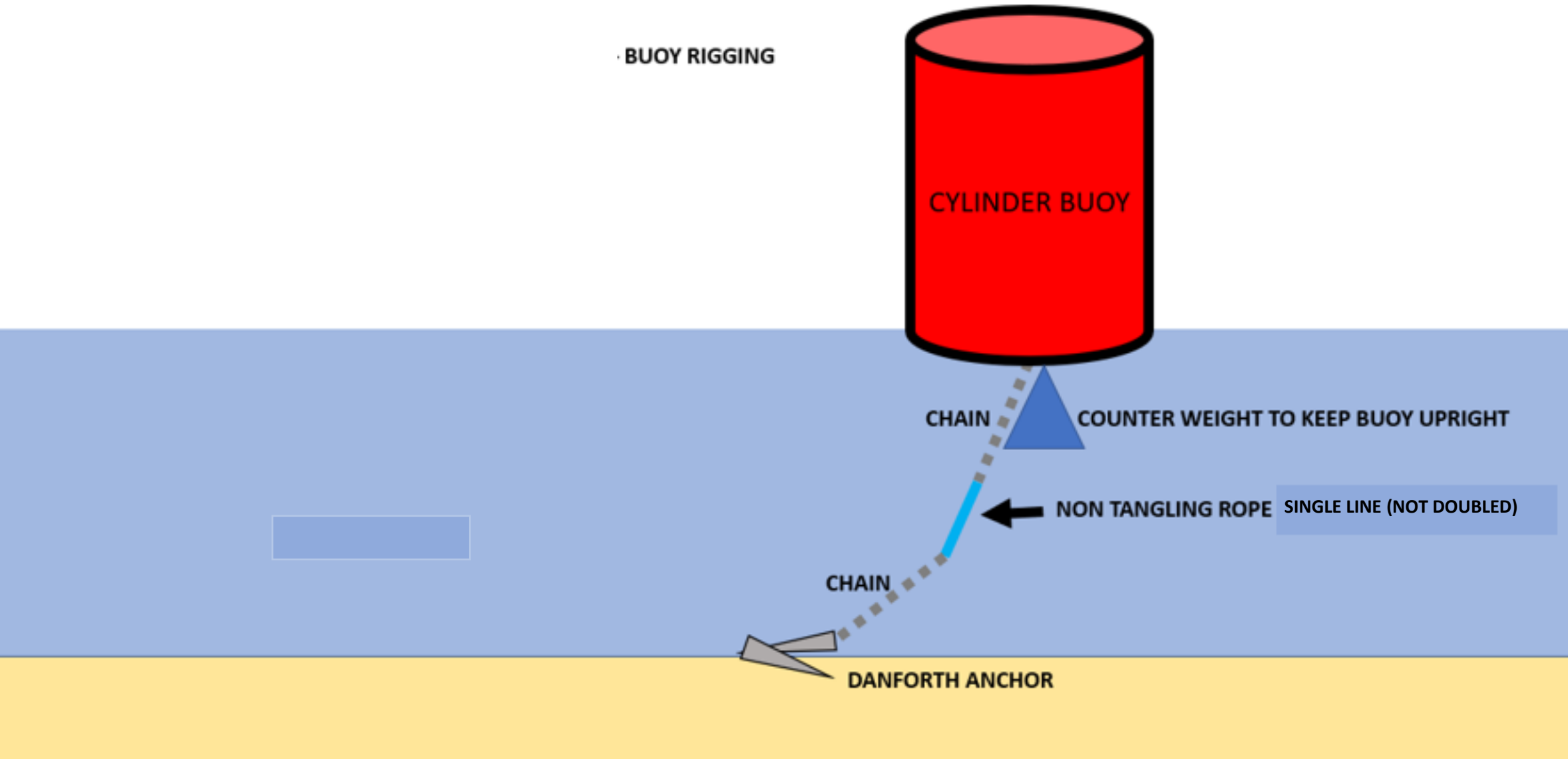






BUOY RIGGING AS INSTRUCTED BY THE ARMY CORPS OF ENGINEERS.

· BUOY RIGGING










PIT PLANS





-  REQUESTED PIT SPACE
-  OVERFLOW PARKING
-  STAFF PARKING
MEDIA PARKING
-  RESTRICTED AREA
-  FUEL



CLASS 1



FS450R



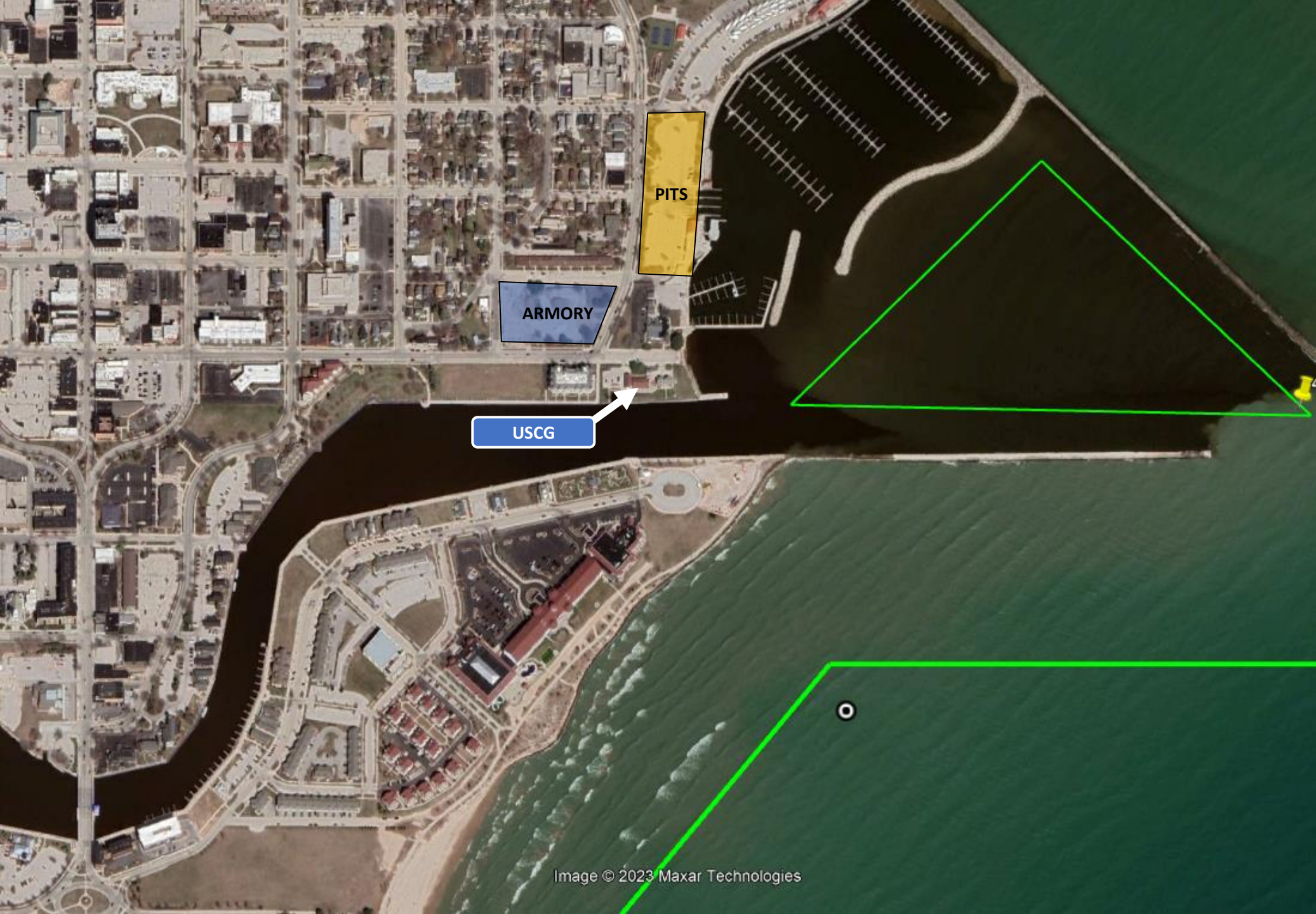
F1



SUPER STOCK

FUEL

CRANE

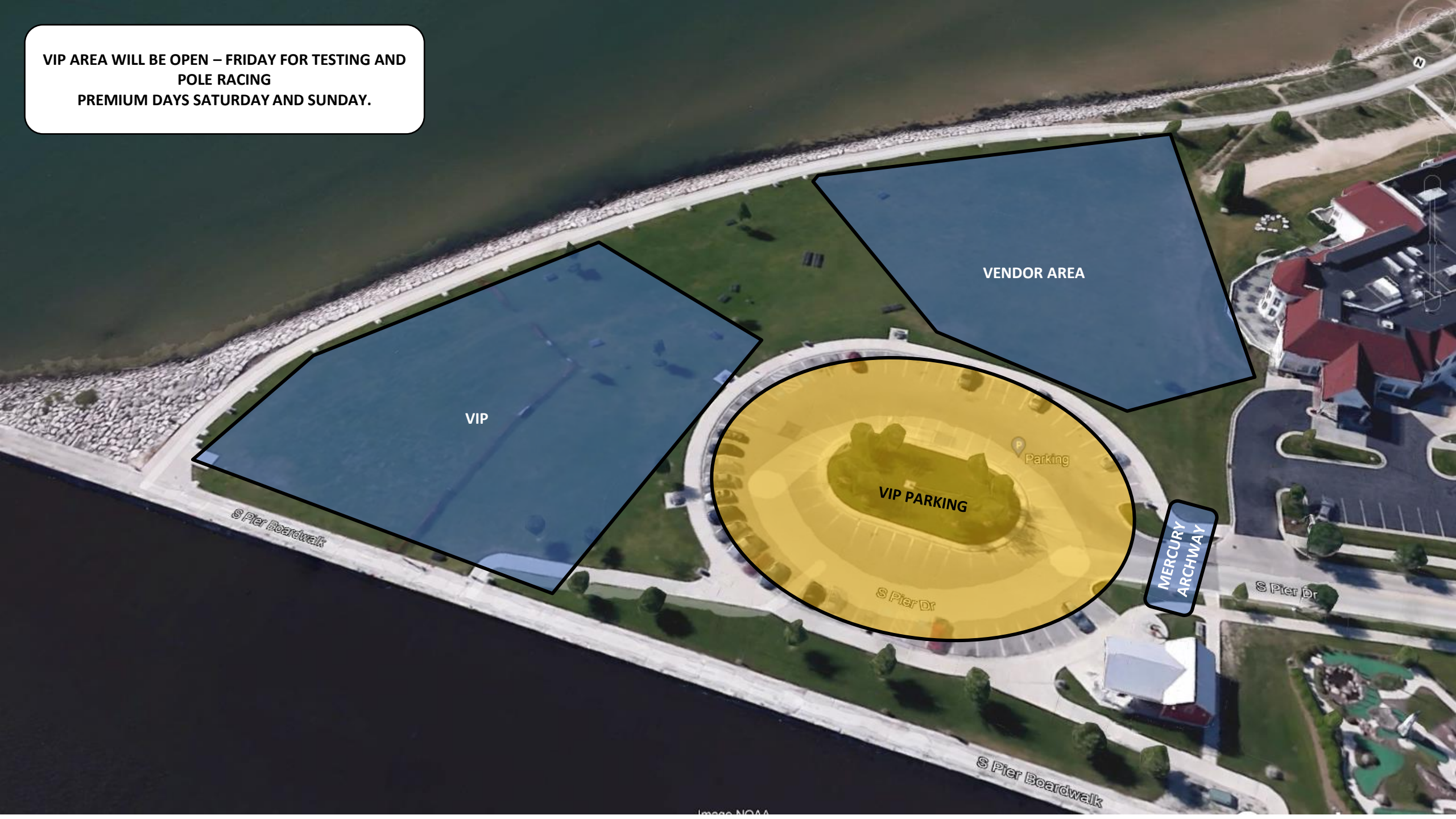




VIP AREA

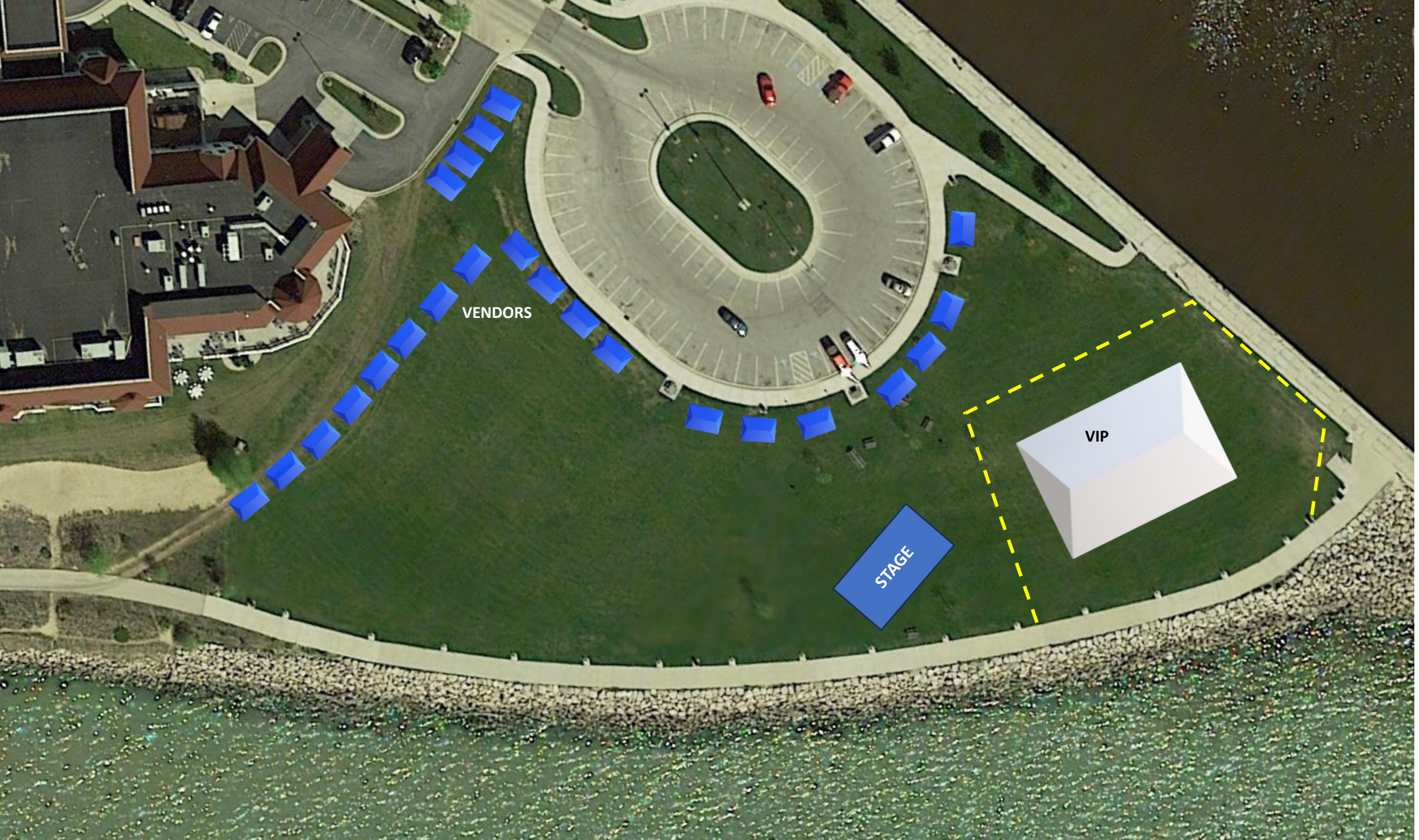


VIP AREA WILL BE OPEN – FRIDAY FOR TESTING AND
POLE RACING
PREMIUM DAYS SATURDAY AND SUNDAY.



VIP AREA WILL BE OPEN – FRIDAY FOR TESTING AND
POLE RACING
PREMIUM DAYS SATURDAY AND SUNDAY.





VENDORS

STAGE

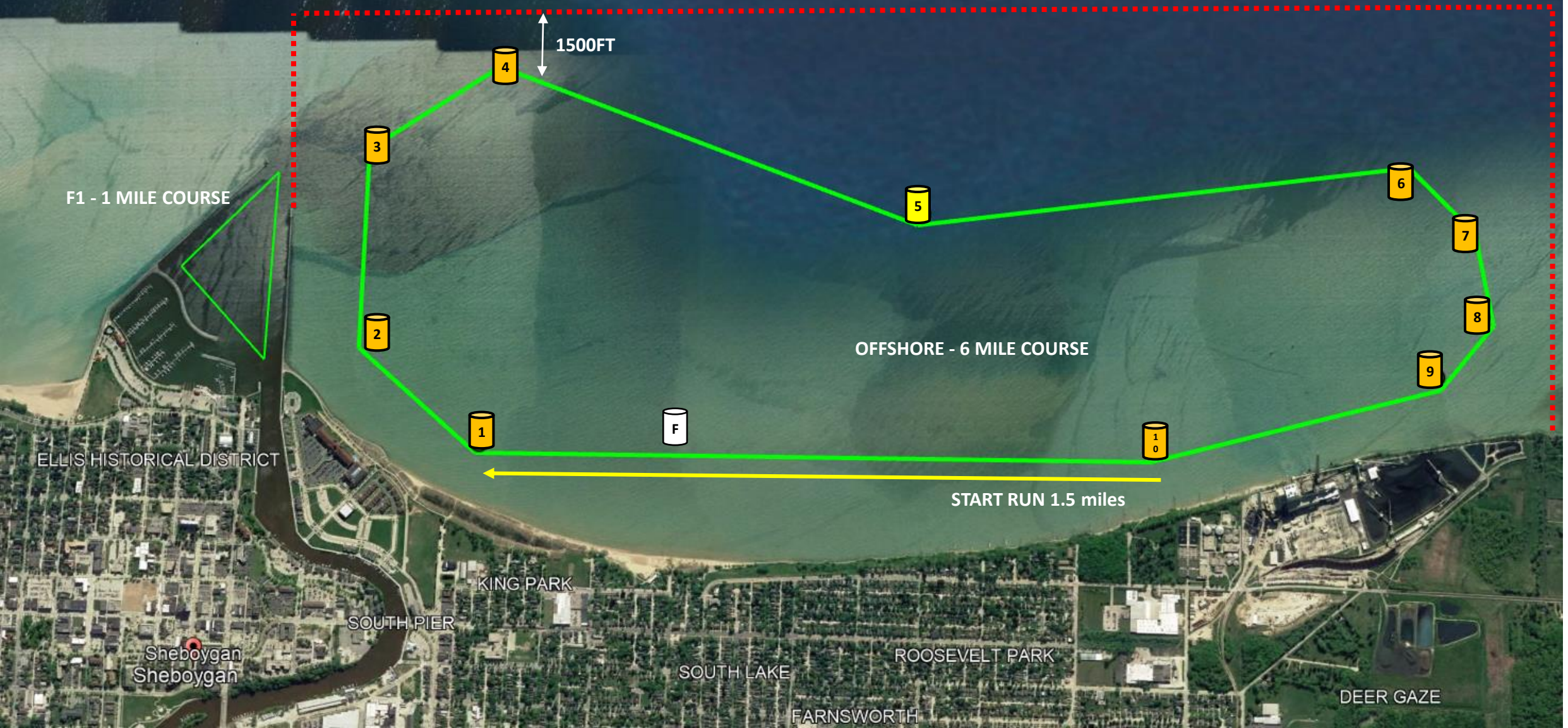
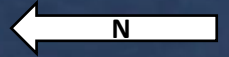
VIP



SAFETY



SAFETY ZONE / SPECTATOR FLEET MUST STAY OUTSIDE THIS ZONE. PERIMETER WILL BE MARKED WITH A "BUCKET LINE" – WHICH MARKS THE ON WATER DESIGNATED SPECTATOR AREA. WE REQUEST ON WATER SUPPORT TO MAINTAIN THE INTEGRITY OF THE SPECTATOR AREA AND PREVENT ANY ENCROACHING VESSELS ON TO THE COURSE.



SAFETY OUTLINE:

PATROL BOATS: 11 VESSELS
DIVE / RESCUE BOATS: 10 VESSELS
COURSE INTEGRITY: 1 VESSELS
P1 RESCUE RHIB 1 VESSEL

P1 RESCUE PWC 4 VESSELS
START FINISH BOAT: 1 VESSEL

1 HELICOPTER DEDICATED TO DIVE / RESCUE
1 DEDICATED EMS / AMBULANCE ON STANDBY

LAW ENFORCEMENT MARINE PATROL VESSELS:
WE WOULD LIKE TO REQUEST A MINIMUM OF 8

FIRE RESCUE VESSELS:
WE WOULD LIKE TO REQUEST A MINIMUM OF 2

TOWING / SALVAGE:
MINIMUM OF TWO VESSELS EQUIPED WITH SALVAGE AND TOWING CAPABILITIES

USCG AUX PATROL VESSELS:
WE WILL REQUEST USCG PRESENCE FOR THE PRIMETER

ALL OUR DIVE RESCUE PERSONEL SPECIALIZE IN POWERBOAT RACING RESCUE. THEY ARE ALSO MEDICALLY TRAINED FIRST RESPONDERS IN EMERGENCY SERVICES SUCH AS EMT, PARAMEDIC, SURF RESCUE AND FIRE RESCUE.



KEY FOR PREVIOUS RACECOURSE OUTLINE

RES


DIVE RESCUE

PAT

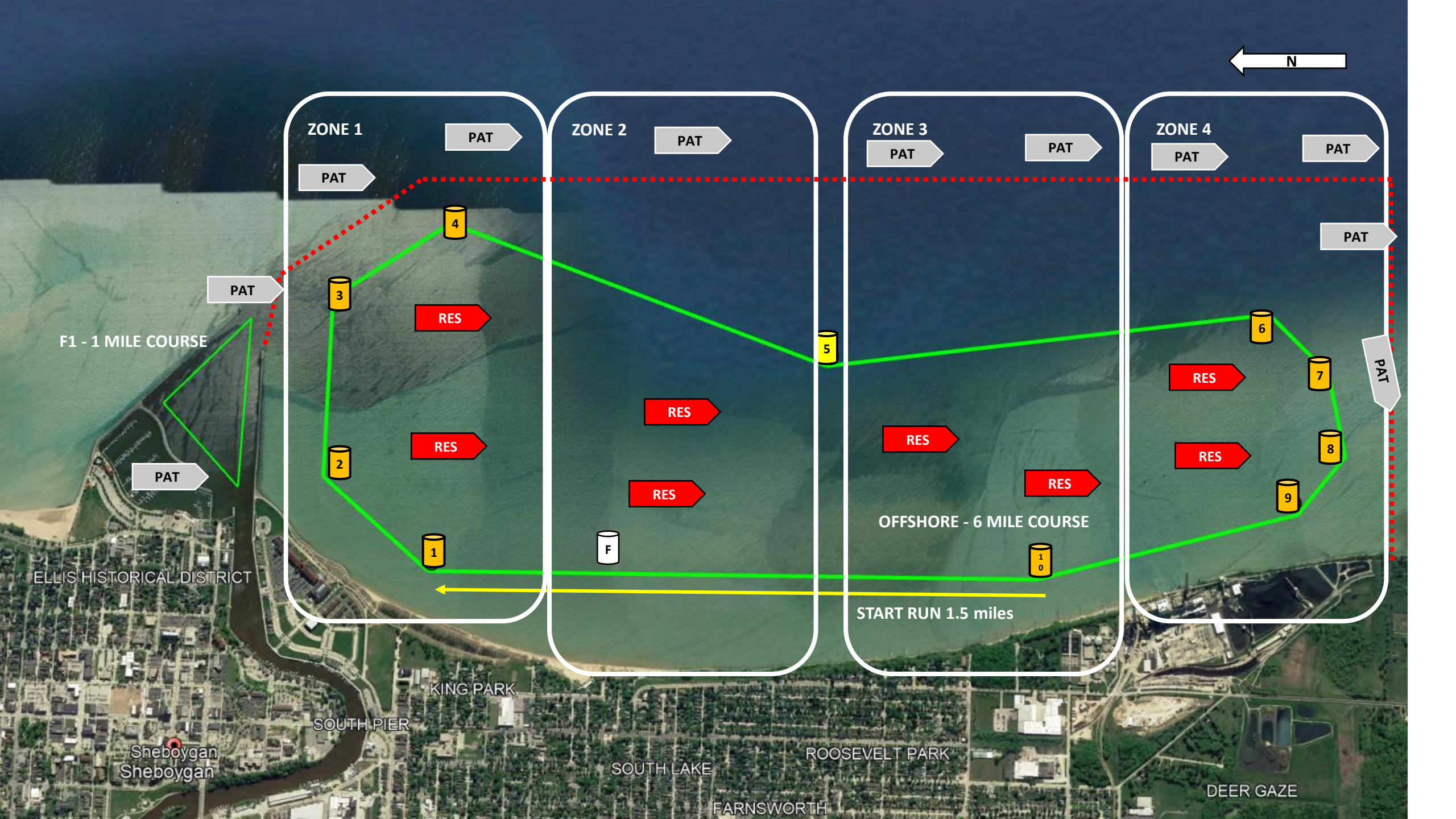
PATROL BOAT / PERIMETER

EMS

AMBULANCE ON STANDY



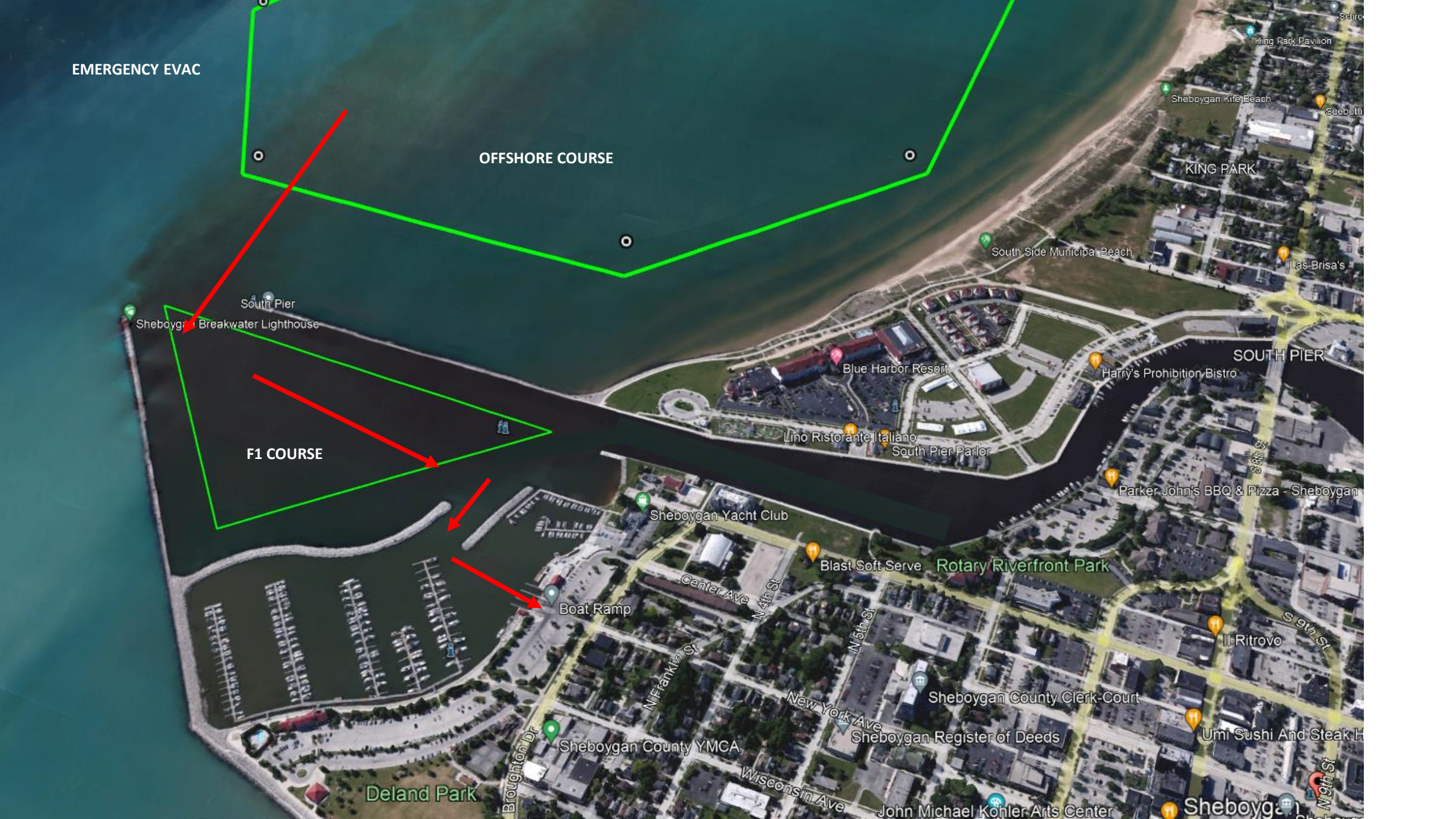
DEDICATED DIVE RESCUE HELICOPTER



EMERGENCY EVAC

OFFSHORE COURSE

F1 COURSE



EMERGENCY EVAC RAMP

CRANE

Boat Ramp

Sheboygan Youth Sailing Center

ALS -
EMS

