

THIS DRAWING HAS BEEN PROVIDED FOR DESIGN, ESTIMATING, AND/OR CONSTRUCTION PURPOSES ONLY. THIS DRAWING AND INFORMATION REMAINS THE PROPERTY OF WAGNER EXCAVATING, INC. AND MAY NOT BE REPRODUCED OR COPIED IN WHOLE OR IN PART WITHOUT PRIOR WRITTEN CONSENT OF WAGNER EXCAVATING, INC. THE INTENT OF THE DESIGN IS FOR CONSTRUCTION AND/OR APPROVAL. IT IS THE OWNERS RESPONSIBILITY FOR MAINTENANCE AND SAFETY OF THE CONSTRUCTED ITEMS

No.	Revision	Date
5		
4		
3		
2		
1	Preliminary Drawings	3-20-2025

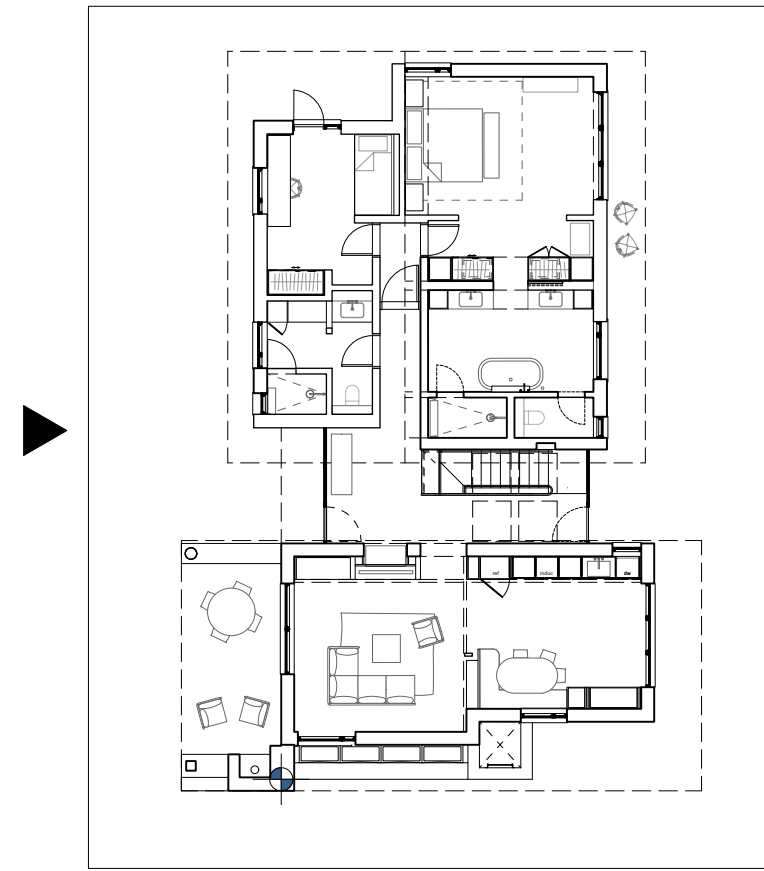


**SHEBOYGAN POINT
PRIVATE RESIDENCE**
120 VOLLRATH BOULEVARD
SHEBOYGAN, WI

DATE
3-20-2025

3

OVERALL SITE PLAN



Key Plan

Sheboygan Point
Villa One
Proposed - West Elevation

General Notes

— Drawings are to be read in conjunction with all other consultants drawings and specifications.

External Finishes Key

- 4" thick Fond du Lac Stone
- Timber framed triple glazed window
- Openable timber side ventilation panel with fly screen in front
- Vertical timber weather boarding with 1"x2" vertical batten

- Larger dimension Fond du Lac Stone with bushhammered finish
- Dark slimline metal framed windows
- Timber shingles to pitched roof

Drawing Scale

1:25	0	250	500	1000	2500mm
------	---	-----	-----	------	--------

Paper Scale

1:1	0	10	20	30	40	50	60	70	80	90	100mm
-----	---	----	----	----	----	----	----	----	----	----	-------

North

© Copyright

This drawing is the property of Tuckey Design Studio Ltd. Copyright and intellectual property of all information shown is reserved by them. The drawing is issued on the condition that it is not copied either wholly, or in part, without written consent from Tuckey Design Studio Ltd, except for planning purposes. Drawings not to be scaled, except for planning purposes. Contractor to work to figurative dimensions only. All dimensions to be checked on site before commencement of work or shop drawings. This drawing is to be read in conjunction with the specification when issued.

-	Detail Design Issue	07 March 2025	CL/JM/E
Rev.	Notes	Date	Drawn/Checked

Tuckey Design Studio

studio@tuckeydesign.com

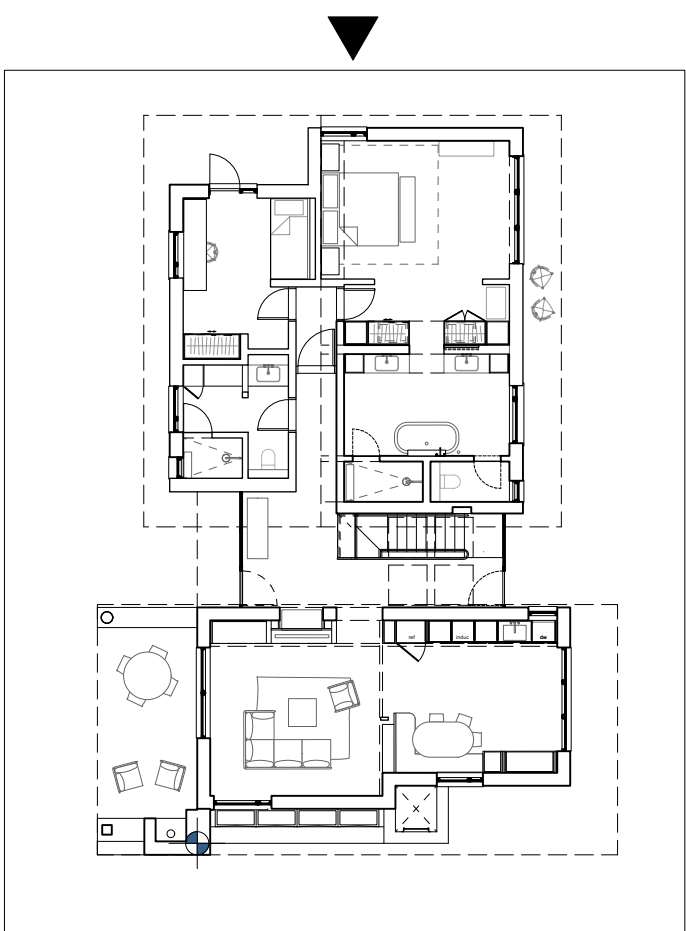
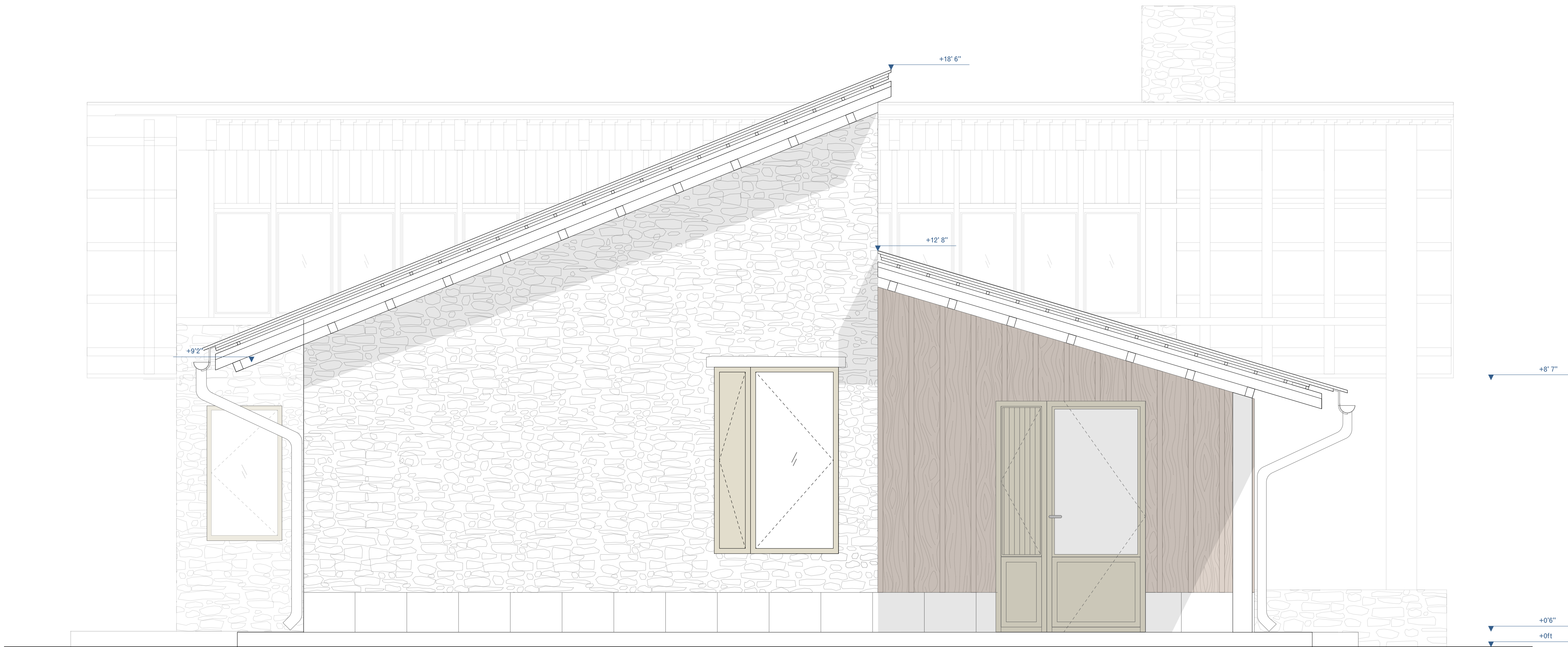
London
58 Milson Road
London W14 0LB
United Kingdom

Switzerland
+41 (0)41 8671406
Gottardstrasse 44
8604 Andermatt
Switzerland

Project
Sheboygan Point
Sheet Title
Proposed - Villa OneWest Elevation
Drawing Number
TDS_301_03_230

Job Number
0301
Scale at A1
1:25
Scale at A3
1:50

Detail Design



Key Plan

Sheboygan Point
Villa One

Proposed - North Elevation

General Notes

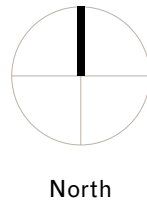
— Drawings are to be read in conjunction with all other consultants drawings and specifications.

External Finishes Key

- 4" thick Fond du Lac Stone
- Timber framed triple glazed window
- Openable timber side ventilation panel with fly screen in front
- Vertical timber weather boarding with 1"x2" vertical batten

- Larger dimension Fond du Lac Stone with bushhammered finish
- Dark slimline metal framed windows
- Timber shingles to pitched roof

Drawing Scale	1:25	0	250	500	1000																																																																																																																																																																																																																																																																																																																																																																																																																																																																																																																																																																																																																																																																																																																																																																																																																																																																																																																																																																																																																																																																																																																																																																																																																																																																																																																																																																																																																																																																																																																																																																												
---------------	------	---	-----	-----	------	--	--	--	--	--	--	--	--	--	--	--	--	--	--	--	--	--	--	--	--	--	--	--	--	--	--	--	--	--	--	--	--	--	--	--	--	--	--	--	--	--	--	--	--	--	--	--	--	--	--	--	--	--	--	--	--	--	--	--	--	--	--	--	--	--	--	--	--	--	--	--	--	--	--	--	--	--	--	--	--	--	--	--	--	--	--	--	--	--	--	--	--	--	--	--	--	--	--	--	--	--	--	--	--	--	--	--	--	--	--	--	--	--	--	--	--	--	--	--	--	--	--	--	--	--	--	--	--	--	--	--	--	--	--	--	--	--	--	--	--	--	--	--	--	--	--	--	--	--	--	--	--	--	--	--	--	--	--	--	--	--	--	--	--	--	--	--	--	--	--	--	--	--	--	--	--	--	--	--	--	--	--	--	--	--	--	--	--	--	--	--	--	--	--	--	--	--	--	--	--	--	--	--	--	--	--	--	--	--	--	--	--	--	--	--	--	--	--	--	--	--	--	--	--	--	--	--	--	--	--	--	--	--	--	--	--	--	--	--	--	--	--	--	--	--	--	--	--	--	--	--	--	--	--	--	--	--	--	--	--	--	--	--	--	--	--	--	--	--	--	--	--	--	--	--	--	--	--	--	--	--	--	--	--	--	--	--	--	--	--	--	--	--	--	--	--	--	--	--	--	--	--	--	--	--	--	--	--	--	--	--	--	--	--	--	--	--	--	--	--	--	--	--	--	--	--	--	--	--	--	--	--	--	--	--	--	--	--	--	--	--	--	--	--	--	--	--	--	--	--	--	--	--	--	--	--	--	--	--	--	--	--	--	--	--	--	--	--	--	--	--	--	--	--	--	--	--	--	--	--	--	--	--	--	--	--	--	--	--	--	--	--	--	--	--	--	--	--	--	--	--	--	--	--	--	--	--	--	--	--	--	--	--	--	--	--	--	--	--	--	--	--	--	--	--	--	--	--	--	--	--	--	--	--	--	--	--	--	--	--	--	--	--	--	--	--	--	--	--	--	--	--	--	--	--	--	--	--	--	--	--	--	--	--	--	--	--	--	--	--	--	--	--	--	--	--	--	--	--	--	--	--	--	--	--	--	--	--	--	--	--	--	--	--	--	--	--	--	--	--	--	--	--	--	--	--	--	--	--	--	--	--	--	--	--	--	--	--	--	--	--	--	--	--	--	--	--	--	--	--	--	--	--	--	--	--	--	--	--	--	--	--	--	--	--	--	--	--	--	--	--	--	--	--	--	--	--	--	--	--	--	--	--	--	--	--	--	--	--	--	--	--	--	--	--	--	--	--	--	--	--	--	--	--	--	--	--	--	--	--	--	--	--	--	--	--	--	--	--	--	--	--	--	--	--	--	--	--	--	--	--	--	--	--	--	--	--	--	--	--	--	--	--	--	--	--	--	--	--	--	--	--	--	--	--	--	--	--	--	--	--	--	--	--	--	--	--	--	--	--	--	--	--	--	--	--	--	--	--	--	--	--	--	--	--	--	--	--	--	--	--	--	--	--	--	--	--	--	--	--	--	--	--	--	--	--	--	--	--	--	--	--	--	--	--	--	--	--	--	--	--	--	--	--	--	--	--	--	--	--	--	--	--	--	--	--	--	--	--	--	--	--	--	--	--	--	--	--	--	--	--	--	--	--	--	--	--	--	--	--	--	--	--	--	--	--	--	--	--	--	--	--	--	--	--	--	--	--	--	--	--	--	--	--	--	--	--	--	--	--	--	--	--	--	--	--	--	--	--	--	--	--	--	--	--	--	--	--	--	--	--	--	--	--	--	--	--	--	--	--	--	--	--	--	--	--	--	--	--	--	--	--	--	--	--	--	--	--	--	--	--	--	--	--	--	--	--	--	--	--	--	--	--	--	--	--	--	--	--	--	--	--	--	--	--	--	--	--	--	--	--	--	--	--	--	--	--	--	--	--	--	--	--	--	--	--	--	--	--	--	--	--	--	--	--	--	--	--	--	--	--	--	--	--	--	--	--	--	--	--	--	--	--	--	--	--	--	--	--	--	--	--	--	--	--	--	--	--	--	--	--	--	--	--	--	--	--	--	--	--	--	--	--	--	--	--	--	--	--	--	--	--	--	--	--	--	--	--	--	--	--	--	--	--	--	--	--	--	--	--	--	--	--	--	--	--	--	--	--	--	--	--	--	--	--	--	--	--	--	--	--	--	--	--	--	--	--	--	--	--	--	--	--	--	--	--	--	--	--	--	--	--	--	--	--	--	--	--	--	--	--	--	--	--	--	--	--	--	--	--	--	--	--	--	--	--	--	--	--	--	--	--	--	--	--	--	--	--	--	--	--	--	--	--	--	--	--	--	--	--	--	--	--	--	--	--	--	--	--	--	--	--	--	--	--	--	--	--	--	--	--	--	--	--	--	--	--	--	--	--	--	--	--	--	--	--	--	--	--	--	--	--	--	--	--	--	--	--	--	--	--	--	--	--	--	--	--	--	--	--	--	--	--	--	--	--	--	--	--	--	--	--	--	--	--	--	--	--	--	--	--	--	--	--	--	--	--	--	--	--	--	--	--	--	--	--	--	--	--	--	--	--	--	--	--	--	--	--	--	--	--	--	--	--	--	--	--	--	--	--	--	--	--	--	--	--	--	--	--	--	--	--	--	--	--	--	--	--	--	--	--	--	--	--	--	--	--	--	--	--	--	--	--	--	--	--	--	--	--	--	--	--	--	--	--	--	--	--	--	--	--	--	--	--	--	--	--	--	--	--	--	--	--	--	--	--	--	--	--	--	--	--	--	--	--	--	--	--	--	--	--	--	--	--	--	--	--	--	--	--	--	--	--	--	--	--	--	--	--	--	--	--	--	--	--	--	--	--	--	--	--	--	--	--	--	--	--	--	--	--	--	--	--	--	--	--	--	--	--	--	--	--	--	--	--	--	--	--	--	--	--	--	--	--	--	--	--	--	--	--	--	--	--	--	--	--	--	--	--	--	--	--	--	--	--	--	--	--	--	--	--	--	--	--	--	--	--	--	--	--	--	--	--	--	--	--	--	--	--	--	--	--	--	--	--	--	--	--	--	--	--	--	--	--	--	--	--	--	--	--	--	--	--	--	--	--	--	--	--	--	--	--	--	--	--	--	--	--	--	--	--	--	--	--	--	--	--	--	--	--	--	--	--	--	--	--	--	--	--	--	--	--	--	--	--	--	--	--	--	--	--	--	--	--	--	--	--	--	--	--	--	--	--	--	--	--	--	--	--	--	--	--	--	--	--	--	--	--	--	--	--	--	--	--	--	--	--	--	--	--	--	--	--	--	--	--	--	--	--	--	--	--	--	--	--	--	--	--	--	--	--	--	--	--	--	--	--	--	--	--	--	--	--	--	--	--	--	--	--	--	--	--	--	--	--	--	--	--	--	--	--	--	--	--	--	--



© Copyright

This drawing is the property of Tuckey Design Studio Ltd. Copyright and intellectual property of all information shown is reserved by them. The drawing is issued on the condition that it is not copied either wholly, or in part, without written consent from Tuckey Design Studio Ltd, except for planning purposes. Drawings not to be scaled, except for planning purposes. Contractor to work to figurative dimensions only. All dimensions to be checked on site before commencement of work or shop drawings. This drawing is to be read in conjunction with the specification when issued.

- Detail Design Issue
Rev. Notes

07 March 2025
Date

CL/JM/E
D. J. M.
Checked

Tuckey Design Studio

studio@tuckeydesign.com

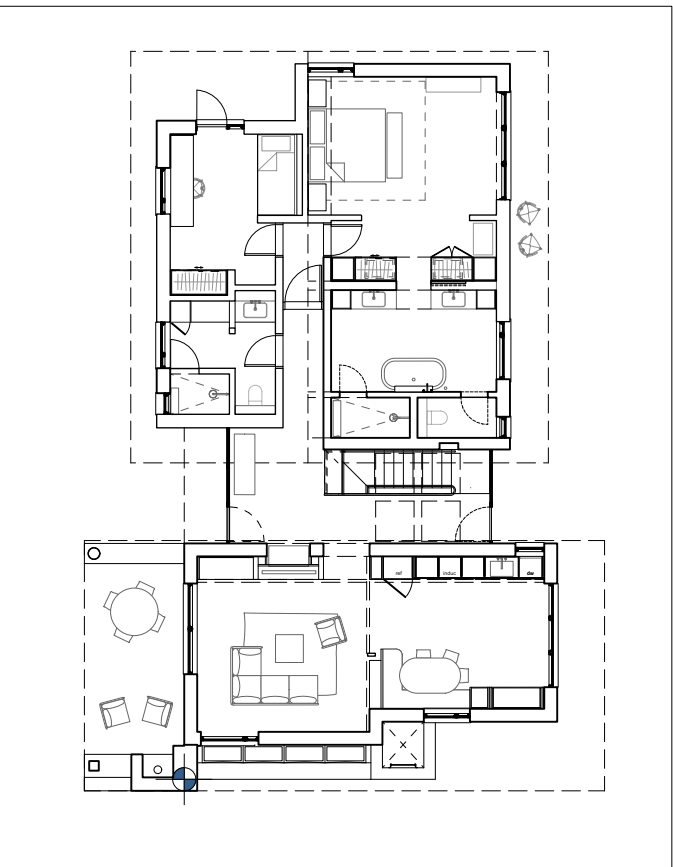
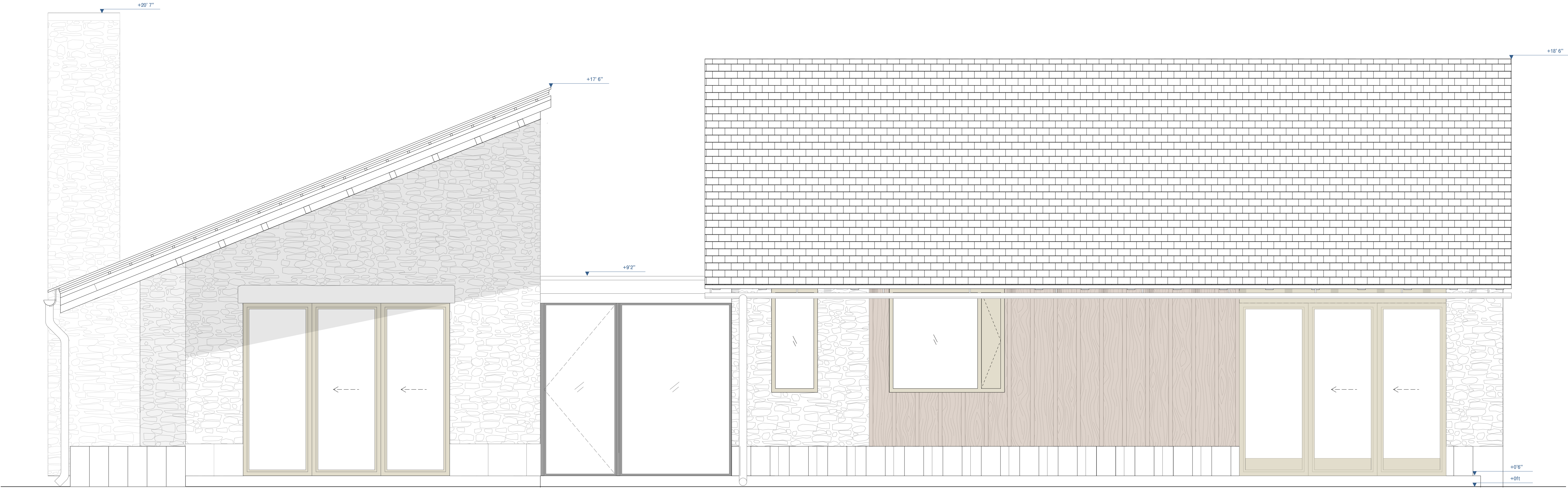
London
+44 (0)20 8960 1909
58 Milson Road
London W14 0LB
United Kingdom

Switzerland
+41 (0)41 8671406
Gottardstrasse 44
8004 Andermatt
Switzerland

Project
Sheboygan Point
Sheet Title
Proposed - Villa One North Elevation
Drawing Number
TDS_301_03_231

Job Number
0301
Scale at A1
1:25
Scale at A3
1:50

Detail Design



Key Plan

Sheboygan Point
Villa One

Proposed - East Elevation

General Notes

— Drawings are to be read in conjunction with all other consultants drawings and specifications.

External Finishes Key

4" thick Fond du Lac Stone

Timber framed triple glazed window


Openable timber side ventilation panel with fly screen in front

Vertical timber weather boarding with 1"x2" vertical batten

Larger dimension Fond du Lac Stone with bushhammered finish

Dark slimline metal framed windows

Timber shingles to pitched roof

Drawing Scale	1:25	0	250	500	1000	2500mm							
Paper Scale	1:1	0	10	20	30	40		50	60	70	80	90	100mm
© Copyright													
This drawing is the property of Tuckey Design Studio Ltd. Copyright and intellectual property of all information shown is reserved by them. The drawing is issued on the condition that it is not copied either wholly, or in part, without written consent from Tuckey Design Studio Ltd, except for planning purposes. Drawings not to be scaled, except for planning purposes. Contractor to work to figurative dimensions only. All dimensions to be checked on site before commencement of work or shop drawings. This drawing is to be read in conjunction with the specification when issued.													
-	Rev.	Notes	Detail Design Issue		07 March 2025				CL/JM		Drawn/Checked		

Tuckey Design Studio

studio@tuckeydesign.com

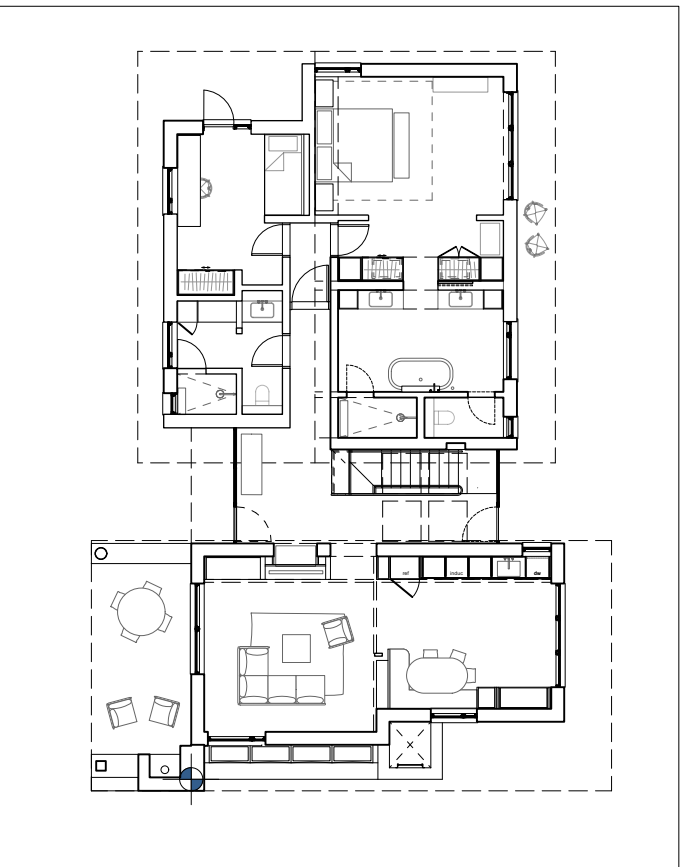
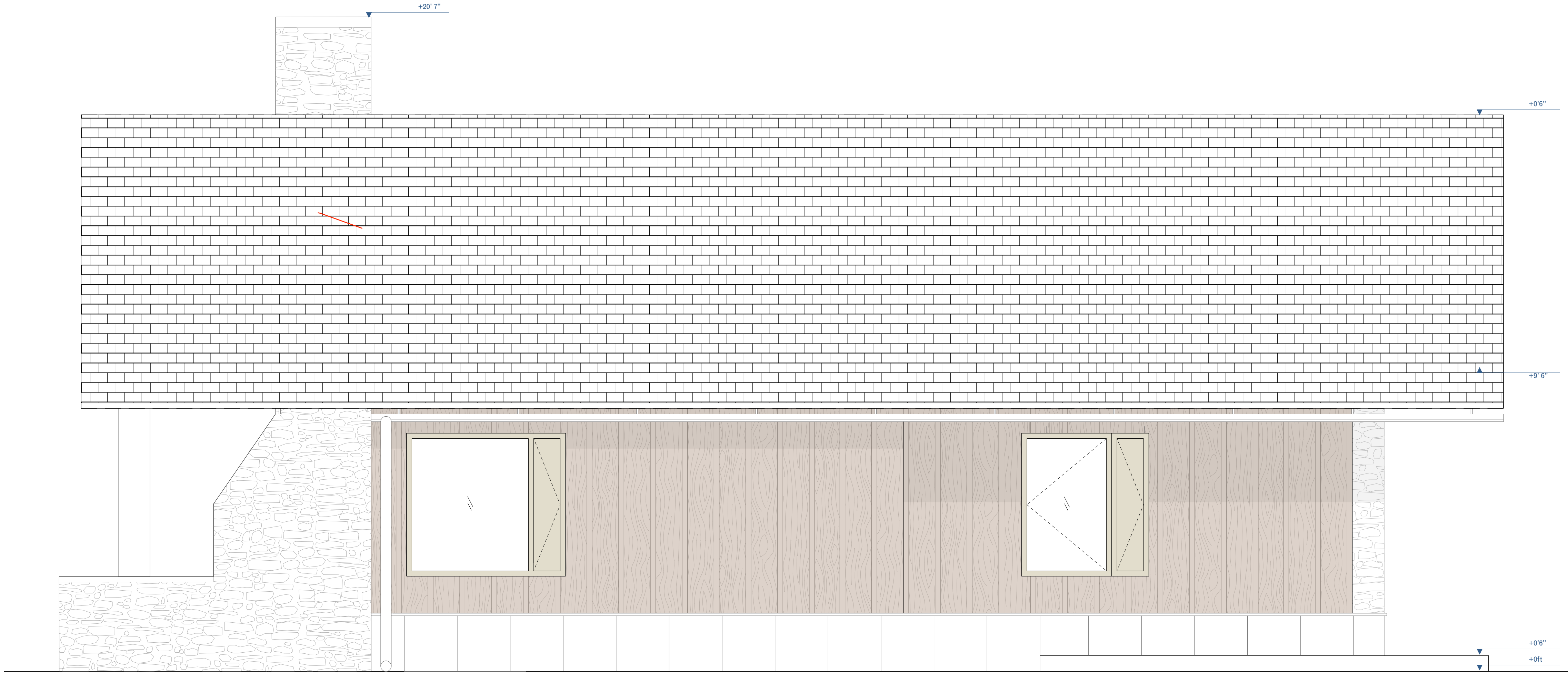
London
+44 (0)20 8960 1909
58 Milson Road
London W14 0LB
United Kingdom

Sheboygan Point
+41 (0)41 8671406
Gottardstrasse 44
8600 Andermatt
Switzerland

Project
Sheboygan Point
Sheet Title
Proposed - Villa One East Elevation
Drawing Number
TDS_301_03_232

Job Number
0301
Scale at A1
1:25
Scale at A3
1:50

Detail Design



Key Plan

Sheboygan Point
Villa One

Proposed - South Elevation

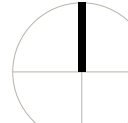
General Notes

— Drawings are to be read in conjunction with all other consultants drawings and specifications.

External Finishes Key

- 4" thick Fond du Lac Stone
- Timber framed triple glazed window
- Openable timber side ventilation panel with fly screen in front
- Vertical timber weather boarding with 1"x2" vertical batten

- Larger dimension Fond du Lac Stone with bushhammered finish
- Dark slimline metal framed windows
- Timber shingles to pitched roof

Drawing Scale	1:25	0	250	500	1000								2500mm	
Paper Scale	1:1	0	10	20	30	40	50	60	70	80	90	100mm	North	
© Copyright														
This drawing is the property of Tuckey Design Studio Ltd. Copyright and intellectual property of all information shown is reserved by them. The drawing is issued on the condition that it is not copied either wholly, or in part, without written consent from Tuckey Design Studio Ltd, except for planning purposes. Drawings not to be scaled, except for planning purposes. Contractor to work to figurative dimensions only. All dimensions to be checked on site before commencement of work or shop drawings. This drawing is to be read in conjunction with the specification when issued.														
-	Detail Design Issue										07 March 2025		CL/JM	
Rev.	Notes										Date		Drawn/Checked	

Tuckey Design Studio

studio@tuckeydesign.com

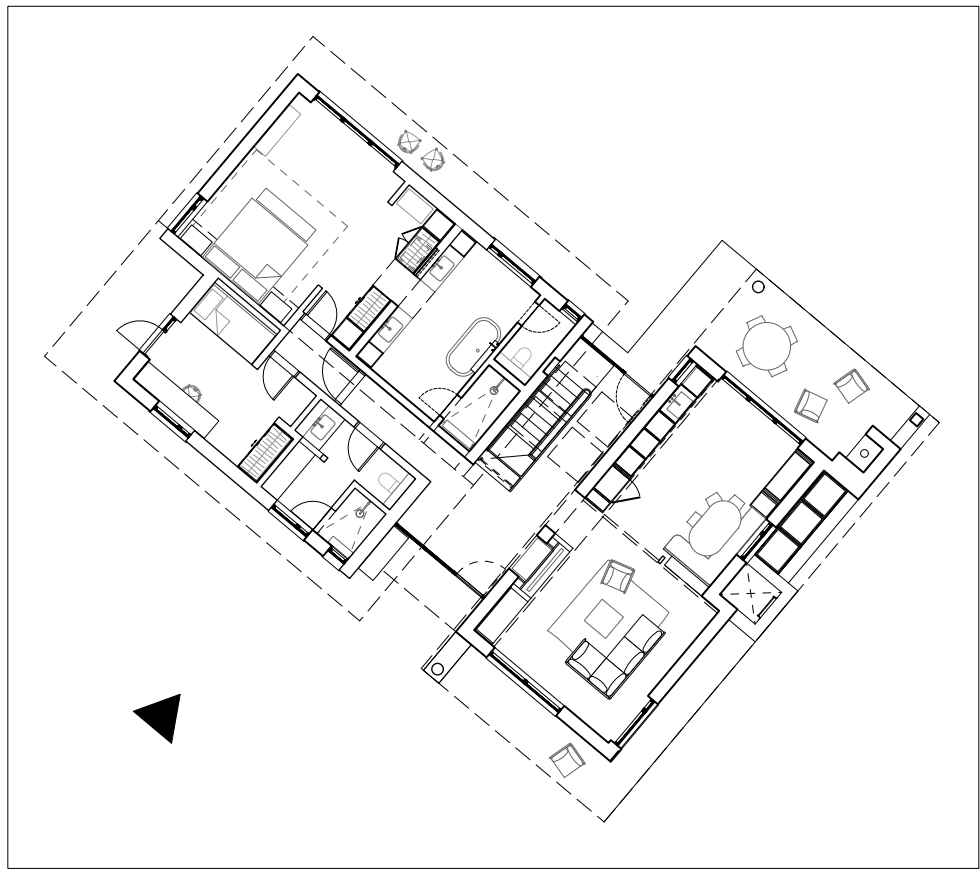
London
+44 (0)20 8960 1909
58 Milson Road
London W14 0LB
United Kingdom

Switzerland
+41 (0)41 8671406
Gottardstrasse 44
8004 Andermatt
Switzerland

Project
Sheboygan Point
Sheet Title
Proposed - Villa One South Elevation
Drawing Number
TDS_301_03_233

Job Number
0301
Scale at A1
1:25
Scale at A3
1:50

Detail Design



Key Plan

Sheboygan Point
Villa Two

Proposed - West Elevation


General Notes

— Drawings are to be read in conjunction with all other consultants drawings and specifications.

External Finishes Key

- 4" thick Fond du Lac Stone
- Timber framed triple glazed window
- Openable timber side ventilation panel with fly screen in front
- Vertical timber weather boarding with 1"x2" vertical batten

- Larger dimension Fond du Lac Stone with bushhammered finish
- Dark slimline metal framed windows
- Timber shingles to pitched roof

Drawing Scale	1:25	0	250	500	1000	2500mm							
Paper Scale	1:1	0	10	20	30	40	50	60	70	80	90	100mm	North

© Copyright

This drawing is the property of Tuckey Design Studio Ltd. Copyright and intellectual property of all information shown is reserved by them. The drawing is issued on the condition that it is not copied either wholly, or in part, without written consent from Tuckey Design Studio Ltd, except for planning purposes. Drawings not to be scaled, except for planning purposes. Contractor to work to figurative dimensions only. All dimensions to be checked on site before commencement of work or shop drawings. This drawing is to be read in conjunction with the specification when issued.

-	Detail Design Issue	07 March 2025	CL/JM/E
Rev.	Notes	Date	Drawn Checked

Tuckey Design Studio

studio@tuckeydesign.com

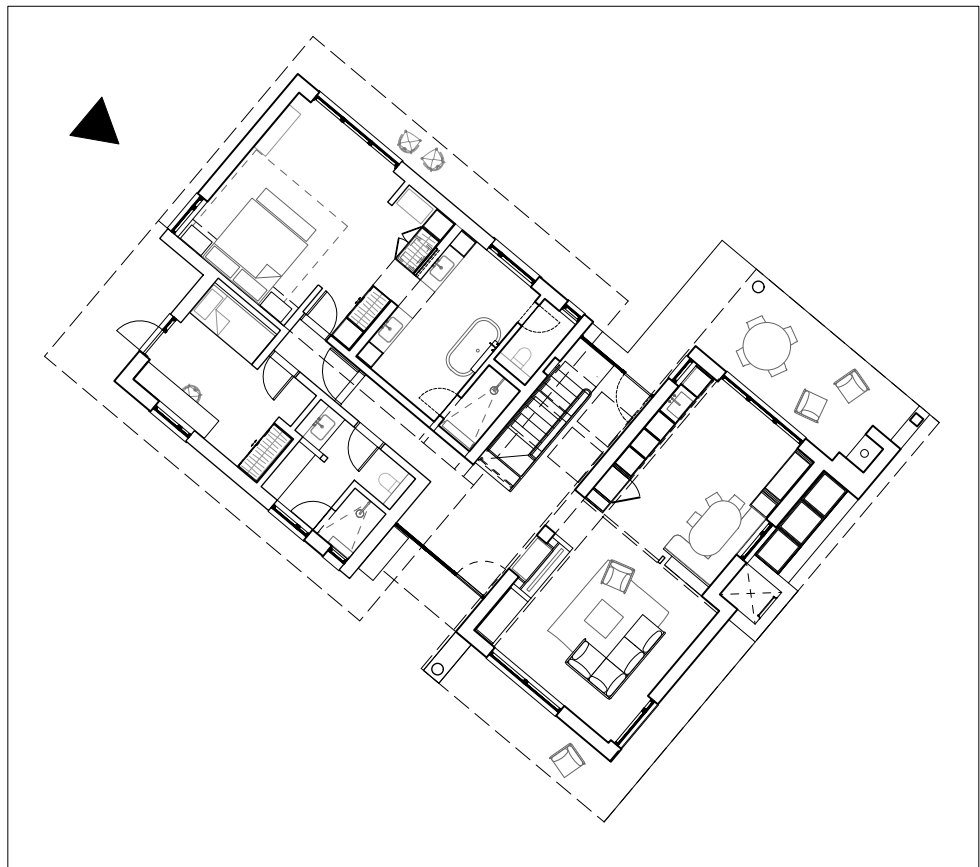
London
+44 (0)20 8960 1909
58 Milson Road
London W14 0LB
United Kingdom

Switzerland
+41 (0)41 8671406
Gottardstrasse 44
8004 Andermatt
Switzerland

Project
Sheboygan Point
Sheet Title
Proposed - Villa Two Southwest Elevation
Drawing Number
TDS_301_03_234

Job Number
0301
Scale at A1
Scale at A3
1:50

Detail Design



Key Plan

Sheboygan Point
Villa Two

Proposed - North Elevation

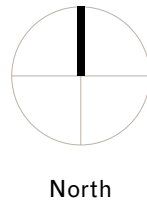
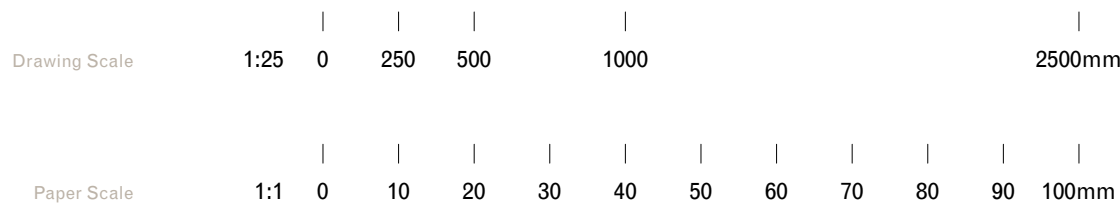
General Notes

— Drawings are to be read in conjunction with all other consultants drawings and specifications.

External Finishes Key

- 4" thick Fond du Lac Stone
- Timber framed triple glazed window
- Openable timber side ventilation panel with fly screen in front
- Vertical timber weather boarding with 1"x2" vertical batten

- Larger dimension Fond du Lac Stone with bushhammered finish
- Dark slimline metal framed windows
- Timber shingles to pitched roof



© Copyright

This drawing is the property of Tuckey Design Studio Ltd. Copyright and intellectual property of all information shown is reserved by them. The drawing is issued on the condition that it is not copied either wholly, or in part, without written consent from Tuckey Design Studio Ltd, except for planning purposes. Drawings not to be scaled, except for planning purposes. Contractor to work to figurative dimensions only. All dimensions to be checked on site before commencement of work or shop drawings. This drawing is to be read in conjunction with the specification when issued.

-	Detail Design Issue	07 March 2025	CL/JM/E
Rev.	Notes	Date	Drawn/Checked

Tuckey Design Studio

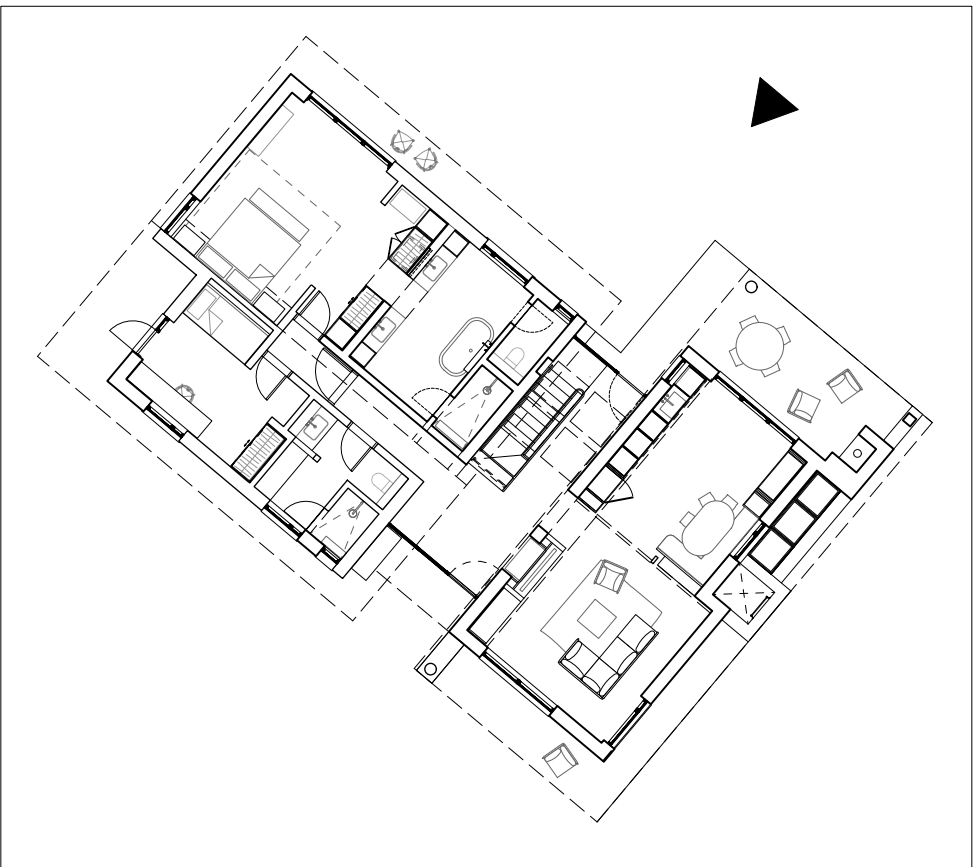
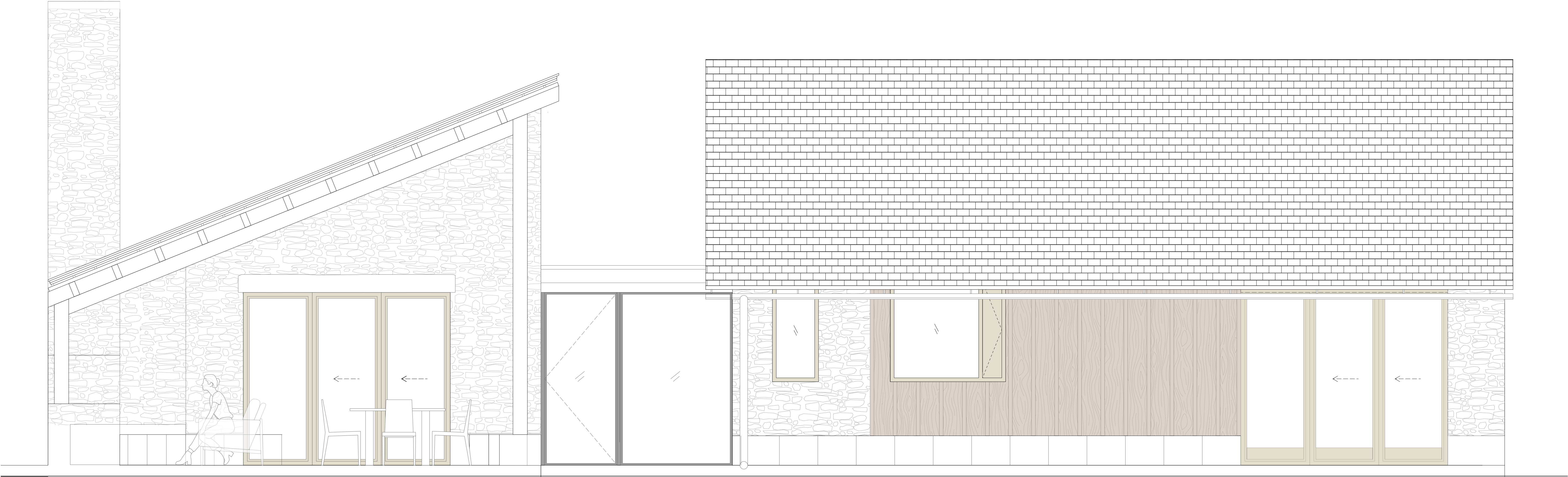
studio@tuckeydesign.com

London
+44 (0)20 8960 1909
58 Milson Road
London W14 0LB
United Kingdom

Switzerland
+41 (0)41 8671406
Gottardstrasse 44
8904 Andermatt
Switzerland

Project	Job Number
Sheboygan Point	0301
Sheet Title	Scale at A1
Proposed - Villa Two Northwest Elevation 1:25	
Drawing Number	Scale at A3
TDS_301_03_235	1:50

Detail Design



Key Plan

Sheboygan Point
Villa Two

Proposed - East Elevation

General Notes

— Drawings are to be read in conjunction with all other consultants drawings and specifications.

External Finishes Key

4" thick Fond du Lac Stone

Timber framed triple glazed window

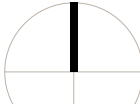
Openable timber side ventilation panel with fly screen in front

Vertical timber weather boarding with 1"x2" vertical batten

Larger dimension Fond du Lac Stone with bushhammered finish

Dark slimline metal framed windows

Timber shingles to pitched roof

Drawing Scale	1:25	0	250	500	1000	2500mm							
Paper Scale	1:1	0	10	20	30	40	50	60	70	80	90	100mm	North
© Copyright													
This drawing is the property of Tuckey Design Studio Ltd. Copyright and intellectual property of all information shown is reserved by them. The drawing is issued on the condition that it is not copied either wholly, or in part, without written consent from Tuckey Design Studio Ltd, except for planning purposes. Drawings not to be scaled, except for planning purposes. Contractor to work to figurative dimensions only. All dimensions to be checked on site before commencement of work or shop drawings. This drawing is to be read in conjunction with the specification when issued.													
-	Detail Design Issue						07 March 2025	CL/JM/E					
Rev.	Notes						Date	Drawn Checked					

Tuckey Design Studio

studio@tuckeydesign.com

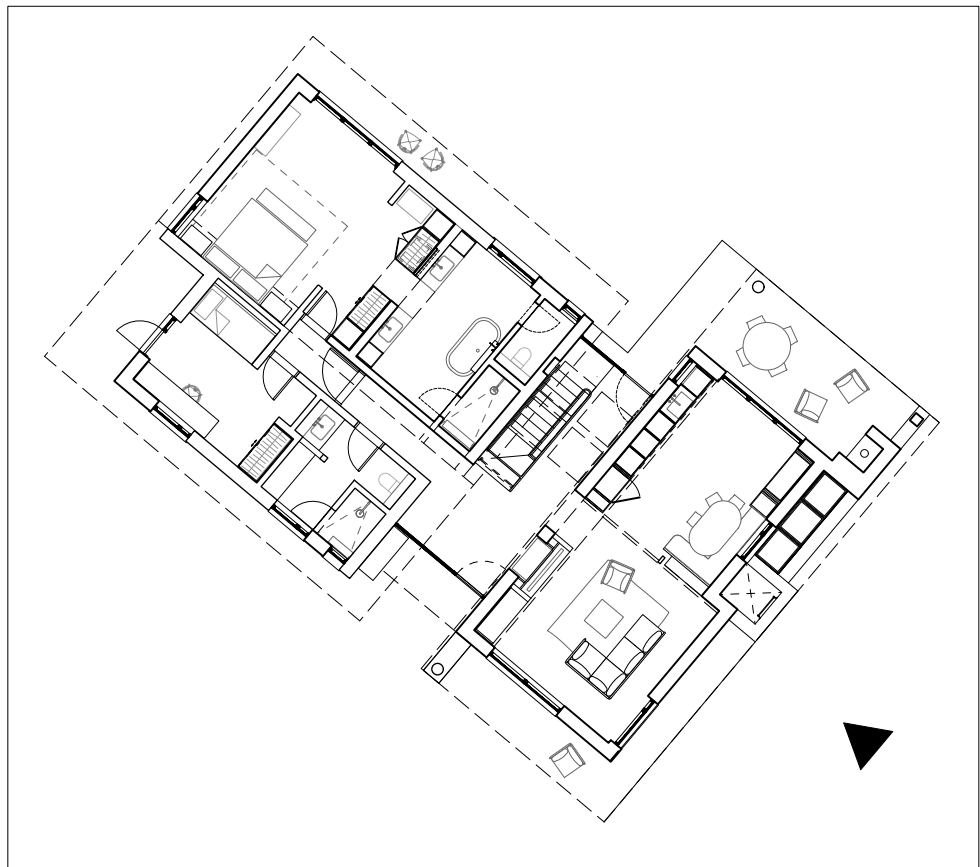
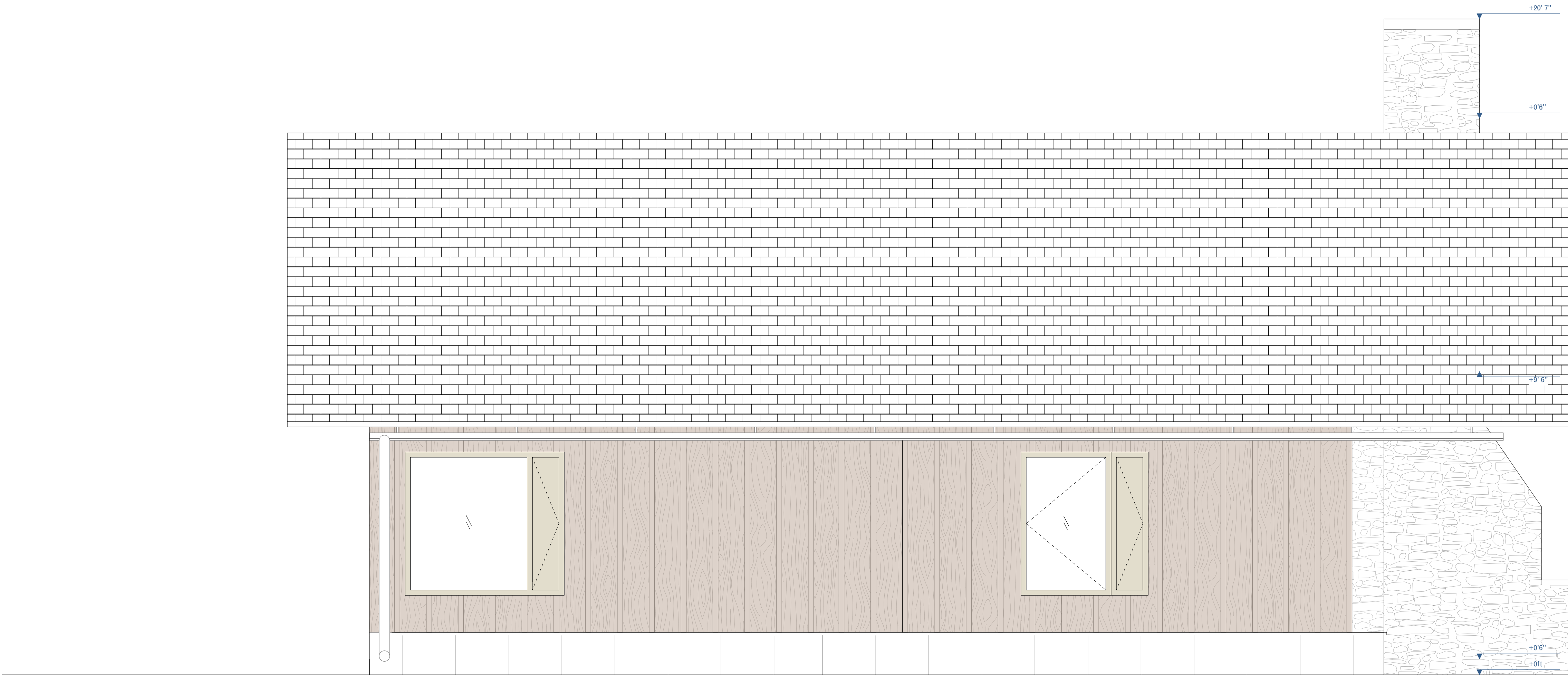
London
+44 (0)20 8960 1909
58 Milson Road
London W14 0LB
United Kingdom

Switzerland
+41 (0)41 8671406
Gottardstrasse 44
8004 Andermatt
Switzerland

Project
Sheboygan Point
Sheet Title
Proposed - Villa Two Northeast Elevation 1:25
Drawing Number
TDS_301_03_236

Job Number
0301
Scale at A1
Scale at A3
1:50

Detail Design



Key Plan

Sheboygan Point
Villa Two

Proposed - South Elevation

General Notes

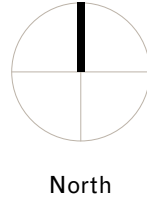
— Drawings are to be read in conjunction with all other consultants drawings and specifications.

External Finishes Key

- 4" thick Fond du Lac Stone
- Timber framed triple glazed window
- Openable timber side ventilation panel with fly screen in front
- Vertical timber weather boarding with 1"x2" vertical batten

- Larger dimension Fond du Lac Stone with bushhammered finish
- Dark slimline metal framed windows
- Timber shingles to pitched roof

Drawing Scale	1:25	0	250	500	1000									2500mm
Paper Scale	1:1	0	10	20	30	40	50	60	70	80	90	100	mm	



© Copyright

This drawing is the property of Tuckey Design Studio Ltd. Copyright and intellectual property of all information shown is reserved by them. The drawing is issued on the condition that it is not copied either wholly, or in part, without written consent from Tuckey Design Studio Ltd, except for planning purposes. Drawings not to be scaled, except for planning purposes. Contractor to work to figurative dimensions only. All dimensions to be checked on site before commencement of work or shop drawings. This drawing is to be read in conjunction with the specification when issued.

- Detail Design Issue
Rev. Notes

07 March 2025
Date

CL/JM/E
D. J. M. E.
Checked

Tuckey Design Studio

studio@tuckeydesign.com

London
+44 (0)20 8960 1909
58 Milson Road
London W14 0LB
United Kingdom

Switzerland
+41 (0)41 8671406
Gottardstrasse 44
8004 Andermatt
Switzerland

Project
Sheboygan Point
Sheet Title
Proposed - Villa Two Southeast Elevation
Drawing Number
TDS_301_03_237

Job Number
0301
Scale at A1
Scale at A3
1:50





Detail Design




Sheboygan Point
VillaThree
Proposed - North Elevation

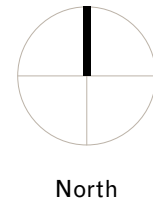
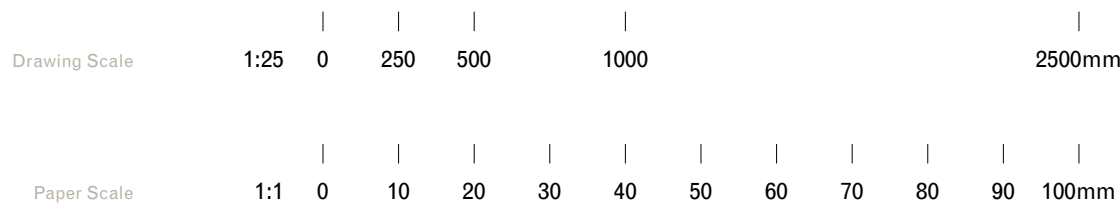
General Notes

— Drawings are to be read in conjunction with all other consultants drawings and specifications.

External Finishes Key

-  4" thick Fond du Lac Stone
-  Timber framed triple glazed window
-  Openable timber side ventilation panel with fly screen in front
-  Vertical timber weather boarding with 1"x2" vertical batten

-  Larger dimension Fond du Lac Stone with bushhammered finish
-  Dark slimline metal framed windows
-  Timber shingles to pitched roof



© Copyright

This drawing is the property of Tuckey Design Studio Ltd. Copyright and intellectual property of all information shown is reserved by them. The drawing is issued on the condition that it is not copied either wholly, or in part, without written consent from Tuckey Design Studio Ltd, except for planning purposes. Drawings not to be scaled, except for planning purposes. Contractor to work to figurative dimensions only. All dimensions to be checked on site before commencement of work or shop drawings. This drawing is to be read in conjunction with the specification when issued.

-	Detail Design Issue	07 March 2025	CL/JM/E
Rev.	Notes	Date	Drawn/Checked

Tuckey Design Studio

studio@tuckeydesign.com

London
+44 (0)20 8960 1909
58 Milson Road
London W14 0LB
United Kingdom

Switzerland
+41 (0)41 8671406
Gotthardstrasse 44
8004 Andermatt
Switzerland

Project	Job Number
Sheboygan Point	0301
Sheet Title	Scale at A1
Proposed - VillaThree North Elevation	1:25
Drawing Number	Scale at A3
TDS_301_03_239	1:50

Detail Design



Sheboygan Point
Villa Three
Proposed - North Elevation

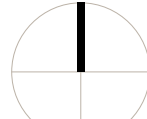
General Notes

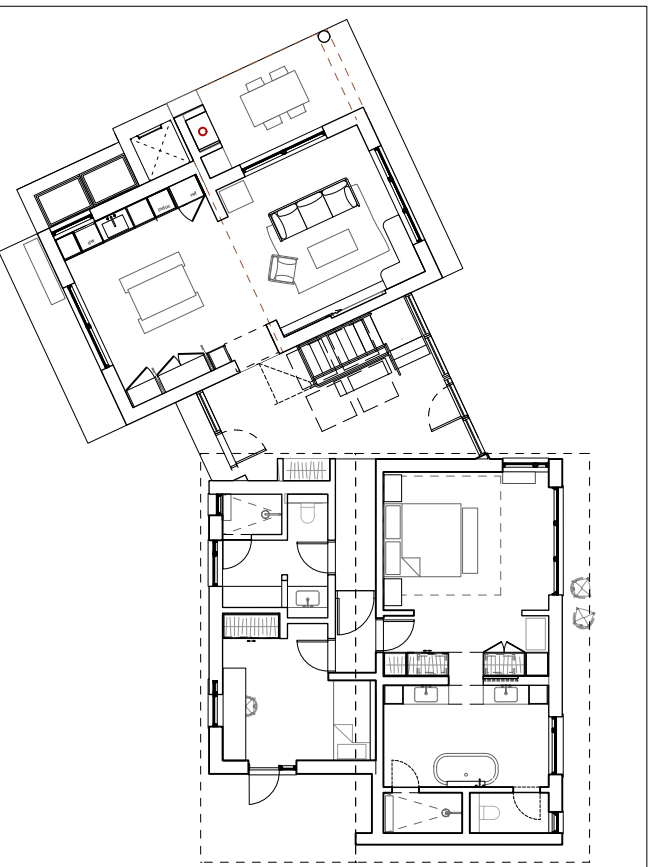
— Drawings are to be read in conjunction with all other consultants drawings and specifications.

External Finishes Key

- 4" thick Fond du Lac Stone
- Timber framed triple glazed window
- Openable timber side ventilation panel with fly screen in front
- Vertical timber weather boarding with 1"x2" vertical batten

- Larger dimension Fond du Lac Stone with bushhammered finish
- Dark slimline metal framed windows
- Timber shingles to pitched roof

Drawing Scale	1:25	0	250	500	1000	2500mm	 North					
Paper Scale	1:1	0	10	20	30	40		50	60	70	80	90
<p>© Copyright</p> <p>This drawing is the property of Tuckey Design Studio Ltd. Copyright and intellectual property of all information shown is reserved by them. The drawing is issued on the condition that it is not copied either wholly, or in part, without written consent from Tuckey Design Studio Ltd, except for planning purposes. Drawings not to be scaled, except for planning purposes. Contractor to work to figurative dimensions only. All dimensions to be checked on site before commencement of work or shop drawings. This drawing is to be read in conjunction with the specification when issued.</p>								Rev.	Detail Design Issue	07 March 2025	CL/JM/E	
								Notes		Date	Drawn/Checked	

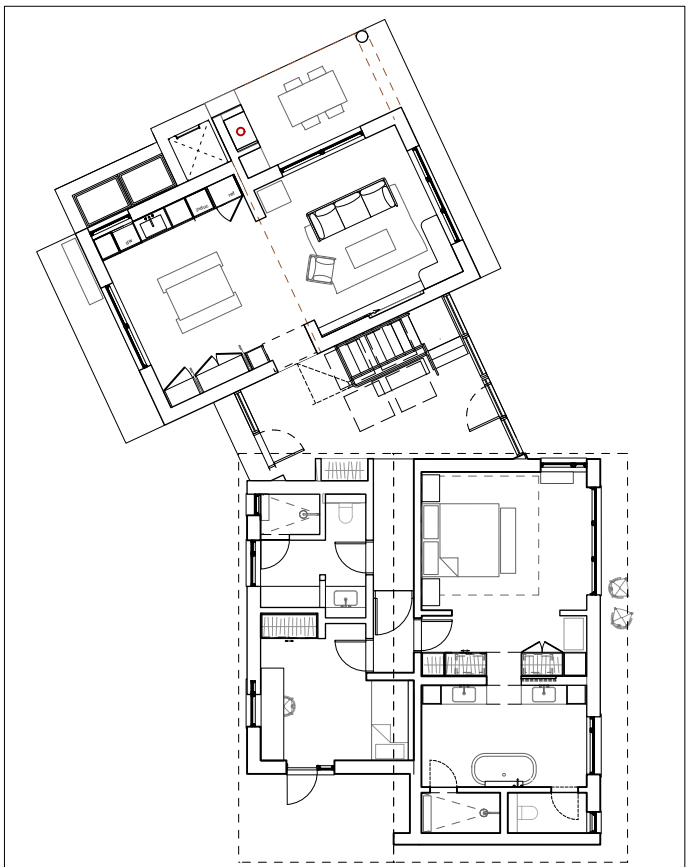


Key Plan

Tuckey Design Studio
studio@tuckeydesign.com
London
+44 (0)20 8960 1909
58 Milson Road
London W14 0LB
United Kingdom
Switzerland
+41 (0)41 8671406
Gotthardstrasse 44
8004 Andermatt
Switzerland

Project
Sheboygan Point
Sheet Title
Proposed - Villa Three East Elevation
Drawing Number
TDS_301_03_240
Job Number
0301
Scale at A1
1:25
Scale at A3
1:50

Detail Design



Key Plan



Sheboygan Point
Villa Three

Proposed - North Elevation

General Notes

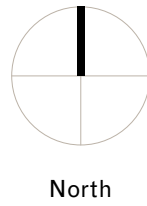
— Drawings are to be read in conjunction with all other consultants drawings and specifications.

External Finishes Key

- 4" thick Fond du Lac Stone
- Timber framed triple glazed window
- Openable timber side ventilation panel with fly screen in front
- Vertical timber weather boarding with 1"x2" vertical batten

- Larger dimension Fond du Lac Stone with bushhammered finish
- Dark slimline metal framed windows
- Timber shingles to pitched roof

Drawing Scale	1:25	0	250	500	1000																																																																																																																																																																																																																																																																																																																																																																																																																																																																																																																																																																																																																																																																																																																																																																																																																																																																																																																																																																																																																																																																																																																																																																																																																																																																																																																																																																																																																																																																																																																																																																													
---------------	------	---	-----	-----	------	--	--	--	--	--	--	--	--	--	--	--	--	--	--	--	--	--	--	--	--	--	--	--	--	--	--	--	--	--	--	--	--	--	--	--	--	--	--	--	--	--	--	--	--	--	--	--	--	--	--	--	--	--	--	--	--	--	--	--	--	--	--	--	--	--	--	--	--	--	--	--	--	--	--	--	--	--	--	--	--	--	--	--	--	--	--	--	--	--	--	--	--	--	--	--	--	--	--	--	--	--	--	--	--	--	--	--	--	--	--	--	--	--	--	--	--	--	--	--	--	--	--	--	--	--	--	--	--	--	--	--	--	--	--	--	--	--	--	--	--	--	--	--	--	--	--	--	--	--	--	--	--	--	--	--	--	--	--	--	--	--	--	--	--	--	--	--	--	--	--	--	--	--	--	--	--	--	--	--	--	--	--	--	--	--	--	--	--	--	--	--	--	--	--	--	--	--	--	--	--	--	--	--	--	--	--	--	--	--	--	--	--	--	--	--	--	--	--	--	--	--	--	--	--	--	--	--	--	--	--	--	--	--	--	--	--	--	--	--	--	--	--	--	--	--	--	--	--	--	--	--	--	--	--	--	--	--	--	--	--	--	--	--	--	--	--	--	--	--	--	--	--	--	--	--	--	--	--	--	--	--	--	--	--	--	--	--	--	--	--	--	--	--	--	--	--	--	--	--	--	--	--	--	--	--	--	--	--	--	--	--	--	--	--	--	--	--	--	--	--	--	--	--	--	--	--	--	--	--	--	--	--	--	--	--	--	--	--	--	--	--	--	--	--	--	--	--	--	--	--	--	--	--	--	--	--	--	--	--	--	--	--	--	--	--	--	--	--	--	--	--	--	--	--	--	--	--	--	--	--	--	--	--	--	--	--	--	--	--	--	--	--	--	--	--	--	--	--	--	--	--	--	--	--	--	--	--	--	--	--	--	--	--	--	--	--	--	--	--	--	--	--	--	--	--	--	--	--	--	--	--	--	--	--	--	--	--	--	--	--	--	--	--	--	--	--	--	--	--	--	--	--	--	--	--	--	--	--	--	--	--	--	--	--	--	--	--	--	--	--	--	--	--	--	--	--	--	--	--	--	--	--	--	--	--	--	--	--	--	--	--	--	--	--	--	--	--	--	--	--	--	--	--	--	--	--	--	--	--	--	--	--	--	--	--	--	--	--	--	--	--	--	--	--	--	--	--	--	--	--	--	--	--	--	--	--	--	--	--	--	--	--	--	--	--	--	--	--	--	--	--	--	--	--	--	--	--	--	--	--	--	--	--	--	--	--	--	--	--	--	--	--	--	--	--	--	--	--	--	--	--	--	--	--	--	--	--	--	--	--	--	--	--	--	--	--	--	--	--	--	--	--	--	--	--	--	--	--	--	--	--	--	--	--	--	--	--	--	--	--	--	--	--	--	--	--	--	--	--	--	--	--	--	--	--	--	--	--	--	--	--	--	--	--	--	--	--	--	--	--	--	--	--	--	--	--	--	--	--	--	--	--	--	--	--	--	--	--	--	--	--	--	--	--	--	--	--	--	--	--	--	--	--	--	--	--	--	--	--	--	--	--	--	--	--	--	--	--	--	--	--	--	--	--	--	--	--	--	--	--	--	--	--	--	--	--	--	--	--	--	--	--	--	--	--	--	--	--	--	--	--	--	--	--	--	--	--	--	--	--	--	--	--	--	--	--	--	--	--	--	--	--	--	--	--	--	--	--	--	--	--	--	--	--	--	--	--	--	--	--	--	--	--	--	--	--	--	--	--	--	--	--	--	--	--	--	--	--	--	--	--	--	--	--	--	--	--	--	--	--	--	--	--	--	--	--	--	--	--	--	--	--	--	--	--	--	--	--	--	--	--	--	--	--	--	--	--	--	--	--	--	--	--	--	--	--	--	--	--	--	--	--	--	--	--	--	--	--	--	--	--	--	--	--	--	--	--	--	--	--	--	--	--	--	--	--	--	--	--	--	--	--	--	--	--	--	--	--	--	--	--	--	--	--	--	--	--	--	--	--	--	--	--	--	--	--	--	--	--	--	--	--	--	--	--	--	--	--	--	--	--	--	--	--	--	--	--	--	--	--	--	--	--	--	--	--	--	--	--	--	--	--	--	--	--	--	--	--	--	--	--	--	--	--	--	--	--	--	--	--	--	--	--	--	--	--	--	--	--	--	--	--	--	--	--	--	--	--	--	--	--	--	--	--	--	--	--	--	--	--	--	--	--	--	--	--	--	--	--	--	--	--	--	--	--	--	--	--	--	--	--	--	--	--	--	--	--	--	--	--	--	--	--	--	--	--	--	--	--	--	--	--	--	--	--	--	--	--	--	--	--	--	--	--	--	--	--	--	--	--	--	--	--	--	--	--	--	--	--	--	--	--	--	--	--	--	--	--	--	--	--	--	--	--	--	--	--	--	--	--	--	--	--	--	--	--	--	--	--	--	--	--	--	--	--	--	--	--	--	--	--	--	--	--	--	--	--	--	--	--	--	--	--	--	--	--	--	--	--	--	--	--	--	--	--	--	--	--	--	--	--	--	--	--	--	--	--	--	--	--	--	--	--	--	--	--	--	--	--	--	--	--	--	--	--	--	--	--	--	--	--	--	--	--	--	--	--	--	--	--	--	--	--	--	--	--	--	--	--	--	--	--	--	--	--	--	--	--	--	--	--	--	--	--	--	--	--	--	--	--	--	--	--	--	--	--	--	--	--	--	--	--	--	--	--	--	--	--	--	--	--	--	--	--	--	--	--	--	--	--	--	--	--	--	--	--	--	--	--	--	--	--	--	--	--	--	--	--	--	--	--	--	--	--	--	--	--	--	--	--	--	--	--	--	--	--	--	--	--	--	--	--	--	--	--	--	--	--	--	--	--	--	--	--	--	--	--	--	--	--	--	--	--	--	--	--	--	--	--	--	--	--	--	--	--	--	--	--	--	--	--	--	--	--	--	--	--	--	--	--	--	--	--	--	--	--	--	--	--	--	--	--	--	--	--	--	--	--	--	--	--	--	--	--	--	--	--	--	--	--	--	--	--	--	--	--	--	--	--	--	--	--	--	--	--	--	--	--	--	--	--	--	--	--	--	--	--	--	--	--	--	--	--	--	--	--	--	--	--	--	--	--	--	--	--	--	--	--	--	--	--	--	--	--	--	--	--	--	--	--	--	--	--	--	--	--	--	--	--	--	--	--	--	--	--	--	--	--	--	--	--	--	--	--	--	--	--	--	--	--	--	--	--	--	--	--	--	--	--	--	--	--	--	--	--	--	--	--	--	--	--	--	--	--	--	--	--	--	--	--	--	--	--	--	--	--	--	--	--	--	--	--	--	--	--	--	--	--	--	--	--	--	--	--	--	--	--	--	--	--	--	--	--	--	--	--	--	--	--	--	--	--	--	--	--	--	--	--	--	--	--	--	--	--	--	--	--



© Copyright

This drawing is the property of Tuckey Design Studio Ltd. Copyright and intellectual property of all information shown is reserved by them. The drawing is issued on the condition that it is not copied either wholly, or in part, without written consent from Tuckey Design Studio Ltd, except for planning purposes. Drawings not to be scaled, except for planning purposes. Contractor to work to figurative dimensions only. All dimensions to be checked on site before commencement of work or shop drawings. This drawing is to be read in conjunction with the specification when issued.

-	Detail Design Issue	07 March 2025	CL/JM/E
Rev.	Notes	Date	Drawn/Checked

Tuckey Design Studio

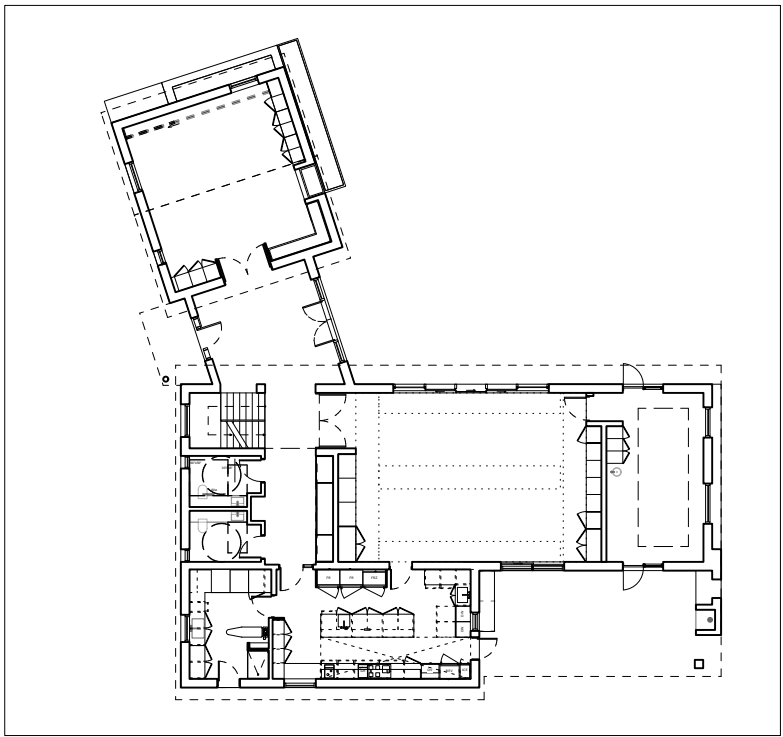
studio@tuckeydesign.com

London
58 Milson Road
London W14 0LB
United Kingdom

Switzerland
+41 (0)41 8671406
Gotthardstrasse 44
8004 Andermatt
Switzerland

Project	Job Number
Sheboygan Point	0301
Sheet Title	Scale at A1
Proposed - Villa Three South Elevation	1:25
Drawing Number	Scale at A3
TDS_301_03_241	1:50

Detail Design



Key Plan



Sheboygan Point
Family Hall
Proposed - West Elevation

General Notes

— Drawings are to be read in conjunction with all other consultants drawings and specifications.

Legend

1. Wall - 4" thick Font du Lac Stone
2. Wall - Vertical timber weather boarding with 1"x 2" vertical batten
3. Wall - Larger dimension Font Du Lac stone skirting. Finish TBC
4. Window - Timber framed triple glazed
5. Window - Metal windows and fixed glazing
6. Window - Timber Brise Soleil
7. Roof - Timber board on board roofing. Species TBC

8. Chimney - Fond du Lac Stone.

9. Window - Timber high level clerestory

10. Timber Dormer- Species and finish TBC.

11. Stainless steel gutters

Tuckey Design Studio

studio@tuckeydesign.com

London
+44 (0)20 8960 1909
58 Milson Road
London W14 0LB
United Kingdom

Project
Sheboygan Point
Sheet Title
Proposed Family Hall - West Elevation
Drawing Number
TDS_301_03_220

Switzerland
+41 (0)41 8671406
Gotthardstrasse 44
8004 Andermatt
Switzerland

Job Number
0301
Scale at A1
50
Scale at A3
100

Detail Design



Sheboygan Point
Family Hall
Proposed - North Elevation FH

General Notes

— Drawings are to be read in conjunction with all other consultants drawings and specifications.

Legend

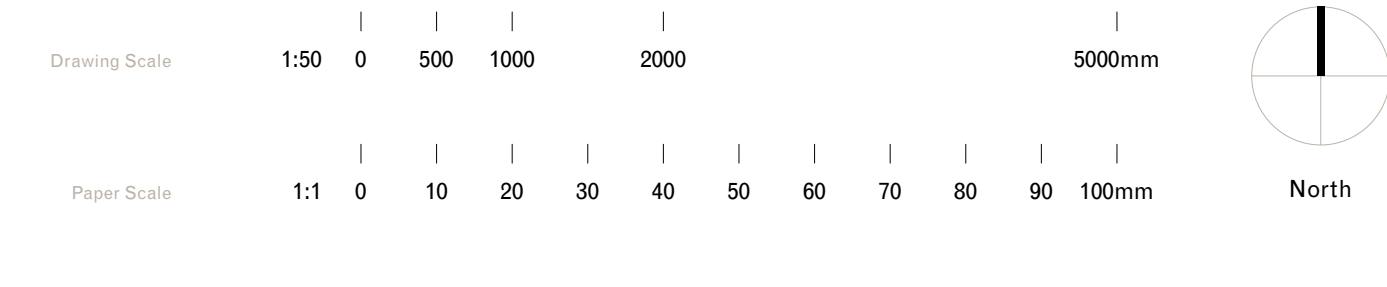
1. Wall - 4" thick Font du Lac Stone
2. Wall - Vertical timber weather boarding with 1"x 2" vertical batten
3. Wall - Larger dimension Font Du Lac stone skirting. Finish TBC
4. Window - Timber framed triple glazed
5. Window - Metal windows and fixed glazing
6. Window - Timber Brise Soleil
7. Roof - Timber board on board roofing. Species TBC

8. Chimney - Fond du Lac Stone.

9. Window - Timber high level clerestory

10. Timber Dormer- Species and finish TBC.

11. Stainless steel gutters



© Copyright

This drawing is the property of Tuckey Design Studio Ltd. Copyright and intellectual property of all information shown is reserved by them. The drawing is issued on the condition that it is not copied either wholly, or in part, without written consent from Tuckey Design Studio Ltd, except for planning purposes. Drawings not to be scaled, except for planning purposes. Contractor to work to figurative dimensions only. All dimensions to be checked on site before commencement of work or shop drawings. This drawing is to be read in conjunction with the specification when issued.

Rev.	Notes	Date	Drawn/Checked
A	Draft Update	04/04/2025	JM/ED
-	First Draft Issue	31 January 2025	RS/JM

Tuckey Design Studio

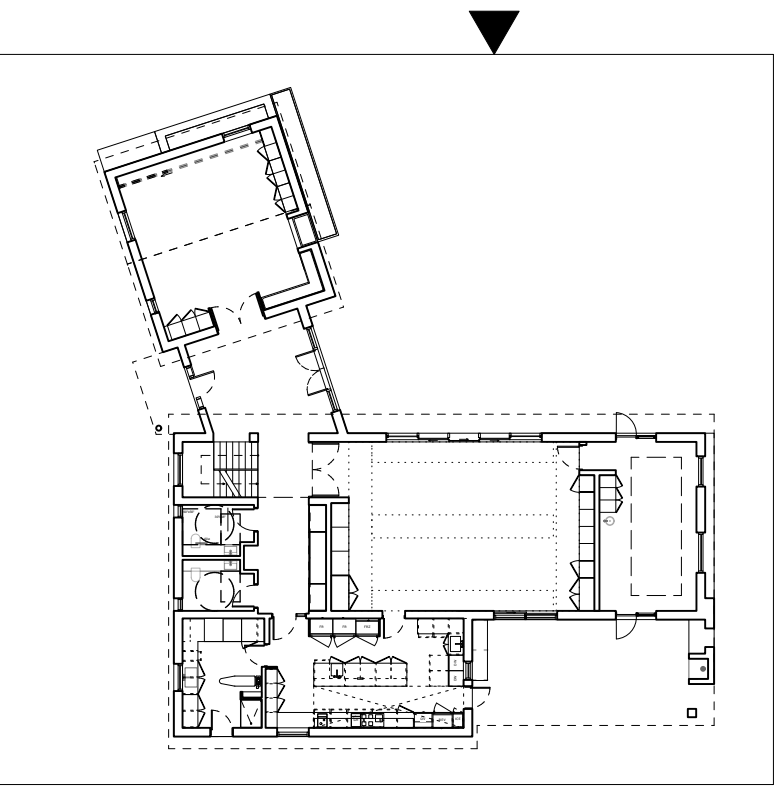
studio@tuckeydesign.com

London
+44 (0)20 8960 1909
58 Milson Road
London W14 0LB
United Kingdom

Switzerland
+41 (0)41 8671406
Gotthardstrasse 44
8004 Andermatt
Switzerland

Project	Job Number
Sheboygan Point	0301
Sheet Title	Scale at A1
Proposed Family Hall - North Elevation	50
Drawing Number	Scale at A3
TDS_301_03_221	100

Detail Design



Key Plan

Sheboygan Point
Family Hall

Proposed - East Elevation

General Notes

— Drawings are to be read in conjunction with all other consultants drawings and specifications.

Legend

1. Wall - 4" thick Font du Lac Stone

2. Wall - Vertical timber weather boarding with 1"x 2" vertical batten

3. Wall - Larger dimension Font Du Lac stone skirting. Finish TBC

4. Window - Timber framed triple glazed

5. Window - Metal windows and fixed glazing

6. Window - Timber Brise Soleil

7. Roof - Timber board on board roofing. Species TBC

8. Chimney - Fond du Lac Stone.

9. Window - Timber high level clerestory

10. Timber Dormer- Species and finish TBC.

11. Stainless steel gutters

Drawing Scale

Paper Scale

1:50 0 500 1000 2000 5000mm

1:1 0 10 20 30 40 50 60 70 80 90 100mm

North

© Copyright

This drawing is the property of Tuckey Design Studio Ltd. Copyright and intellectual property of all information shown is reserved by them. The drawing is issued on the condition that it is not copied either wholly, or in part, without written consent from Tuckey Design Studio Ltd, except for planning purposes. Drawings not to be scaled, except for planning purposes. Contractor to work to figurative dimensions only. All dimensions to be checked on site before commencement of work or shop drawings. This drawing is to be read in conjunction with the specification when issued.

A	Draft Update	04/04/2025	JM/ED
-	First Draft Issue	31 January 2025	RS/JM
Rev.	Notes	Date	Drawn/Checked

Tuckey Design Studio

studio@tuckeydesign.com

London
+44 (0)20 8960 1909
58 Milson Road
London W14 0LB
United Kingdom

Switzerland
+41 (0)41 8671406
Gottardstrasse 44
8004 Andermatt
Switzerland

Project
Sheboygan Point

Job Number
0301

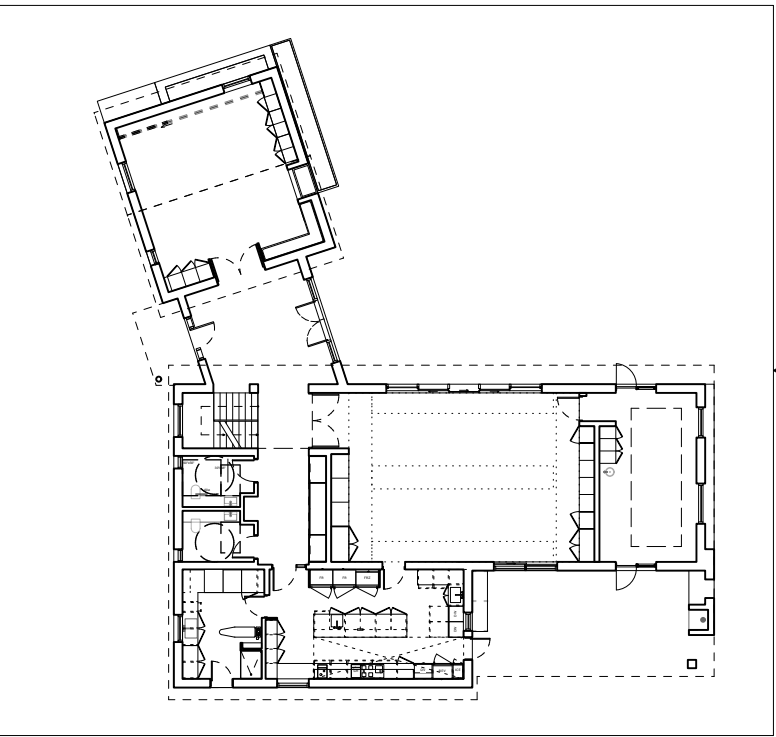
Sheet Title
Proposed Family Hall - East Elevation

Drawing Number
TDS_301_03_222

Scale at A1
50

Scale at A3
100

Detail Design



Key Plan

Sheboygan Point
Family Hall
Proposed - South Elevation

General Notes

— Drawings are to be read in conjunction with all other consultants drawings and specifications.

Legend

1. Wall - 4" thick Font du Lac Stone
2. Wall - Vertical timber weather boarding with 1"x 2" vertical batten
3. Wall - Larger dimension Font Du Lac stone skirting. Finish TBC
4. Window - Timber framed triple glazed
5. Window - Metal windows and fixed glazing
6. Window - Timber Brise Soleil
7. Roof - Timber board on board roofing. Species TBC

8. Chimney - Fond du Lac Stone.

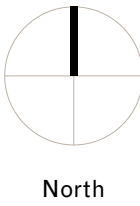
9. Window - Timber high level clerestory

10. Timber Dormer- Species and finish TBC.

11. Stainless steel gutters

Drawing Scale 1:50 0 500 1000 2000 5000mm

Paper Scale 1:1 0 10 20 30 40 50 60 70 80 90 100mm



© Copyright

This drawing is the property of Tuckey Design Studio Ltd. Copyright and intellectual property of all information shown is reserved by them. The drawing is issued on the condition that it is not copied either wholly, or in part, without written consent from Tuckey Design Studio Ltd, except for planning purposes. Drawings not to be scaled, except for planning purposes. Contractor to work to figurative dimensions only. All dimensions to be checked on site before commencement of work or shop drawings. This drawing is to be read in conjunction with the specification when issued.

A	Draft Update	04/04/2025	JM/ED
-	First Draft Issue	31 January 2025	RS/JM
Rev.	Notes	Date	Drawn/Checked

Tuckey Design Studio

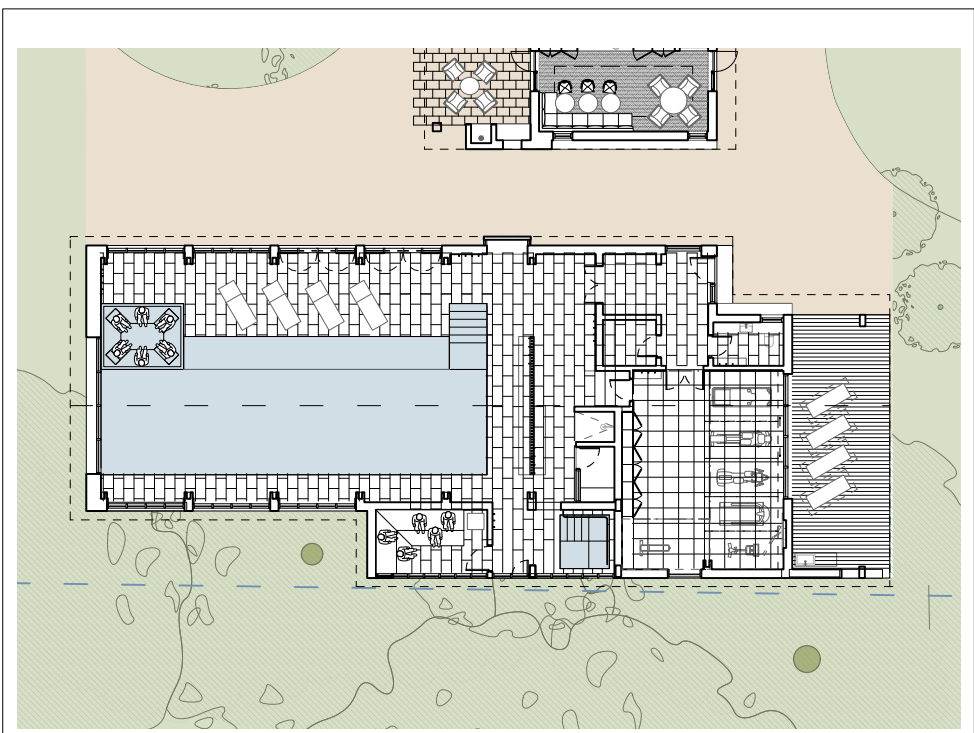
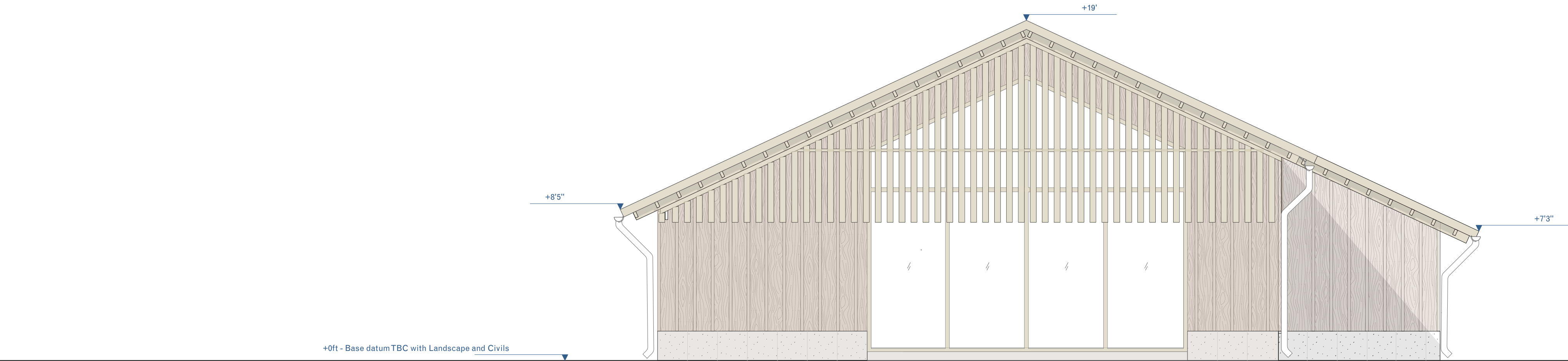
studio@tuckeydesign.com

London
+44 (0)20 8960 1909
58 Milson Road
London W14 0LB
United Kingdom

Switzerland
+41 (0)41 8671406
Gottardstrasse 44
8004 Andermatt
Switzerland

Project	Job Number
Sheboygan Point	0301
Sheet Title	Scale at A1
Proposed Family Hall - South Elevation	50
Drawing Number	Scale at A3
TDS_301_03_223	100

Detail Design



Key Plan

Sheboygan Point
Wellness Centre

Proposed - West Elevation

General Notes

— Drawings are to be read in conjunction with all other consultants drawings and specifications.

External Finishes Key



4" thick Fond du Lac Stone



Timber board on board roof



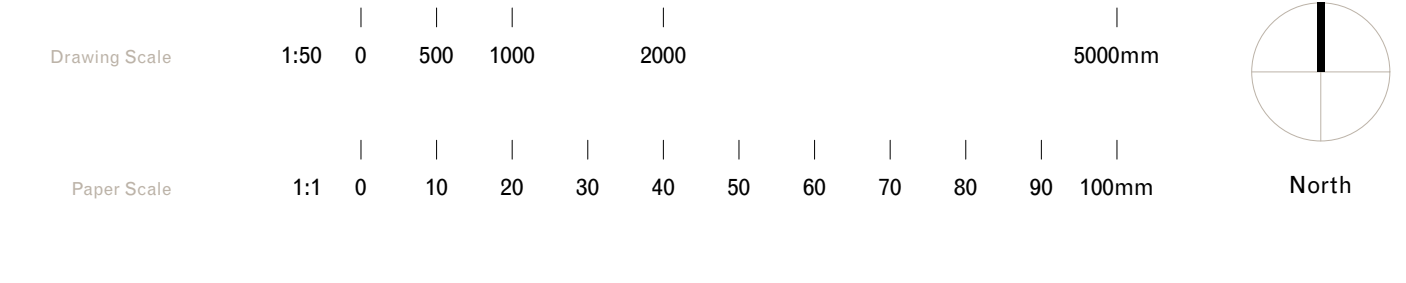
Timber framed triple glazed window



Vertical timber weather boarding with 1"x2" vertical batten



Larger dimension Fond du Lac Stone with bushhammered finish



© Copyright				This drawing is the property of Tuckey Design Studio Ltd. Copyright and intellectual property of all information shown is reserved by them. The drawing is issued on the condition that it is not copied either wholly, or in part, without written consent from Tuckey Design Studio Ltd, except for planning purposes. Drawings not to be scaled, except for planning purposes. Contractor to work to figurative dimensions only. All dimensions to be checked on site before commencement of work or shop drawings. This drawing is to be read in conjunction with the specification when issued.			
A	Draft Material updates	04/04/2025	JM/ED				
-	Detail Design Issue	XX April 2025	RS/JM				
Rev.	Notes	Date	Drawn/Checked				

Tuckey Design Studio

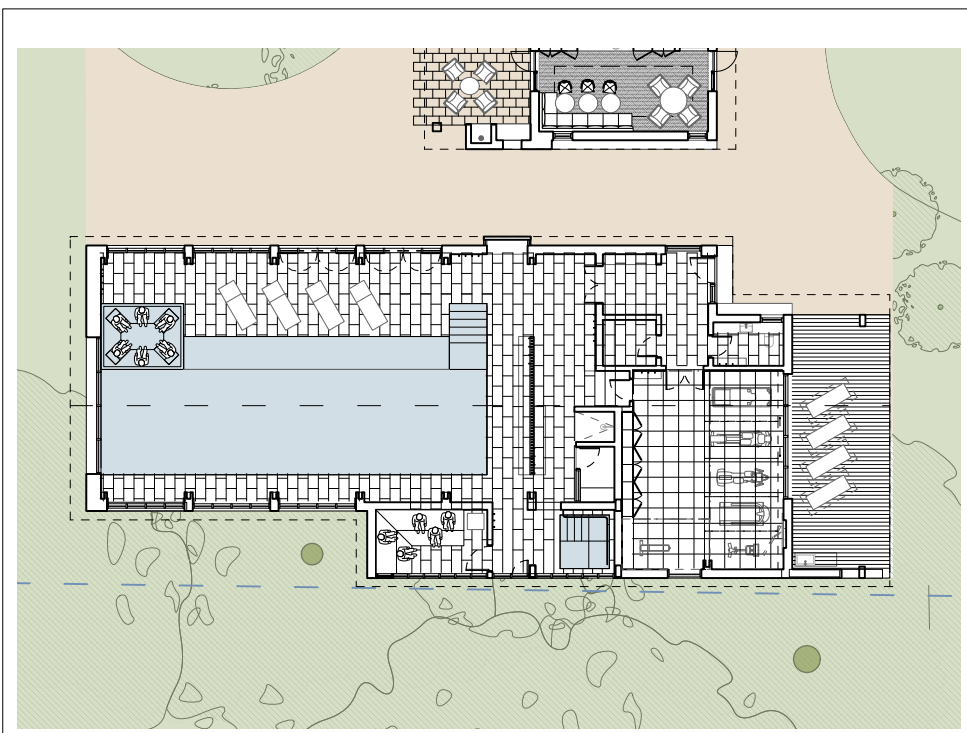
studio@tuckeydesign.com

London
+44 (0)20 8960 1909
58 Milson Road
London W14 0LB
United Kingdom

Switzerland
+41 (0)41 8871406
Gotthardstrasse 44
6490 Andermatt
Switzerland

Project	Job Number
Sheboygan Point	0301
Sheet Title	Scale at A1
Proposed Wellness Centre - West	50
Elevation	Scale at A3
TDS_301_03_225	100

Detail Design



Key Plan






Sheboygan Point
Wellness Centre

Proposed - North Elevation

General Notes

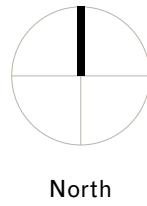
— Drawings are to be read in conjunction with all other consultants drawings and specifications.

External Finishes Key

	4" thick Fond du Lac Stone		Timber board on board roof
	Timber framed triple glazed window		
	Vertical timber weather boarding with 1"x2" vertical batten		
	Larger dimension Fond du Lac Stone with bushhammered finish		

Drawing Scale 1:50 0 500 1000 2000 5000mm

Paper Scale 1:1 0 10 20 30 40 50 60 70 80 90 100mm



© Copyright

This drawing is the property of Tuckey Design Studio Ltd. Copyright and intellectual property of all information shown is reserved by them. The drawing is issued on the condition that it is not copied either wholly, or in part, without written consent from Tuckey Design Studio Ltd, except for planning purposes. Drawings not to be scaled, except for planning purposes. Contractor to work to figurative dimensions only. All dimensions to be checked on site before commencement of work or shop drawings. This drawing is to be read in conjunction with the specification when issued.

Rev.	Notes	Date	Drawn/Checked
A	Draft Material updates	04/04/2025	JM/ED
-	Detail Design Issue	XX April 2025	RS/JM

Tuckey Design Studio

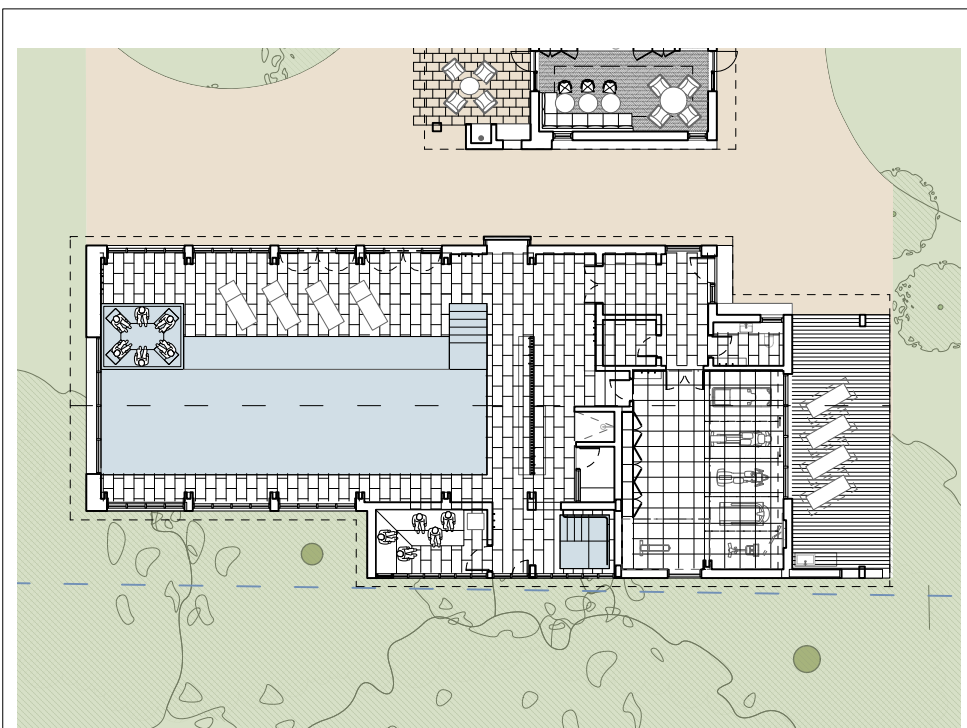
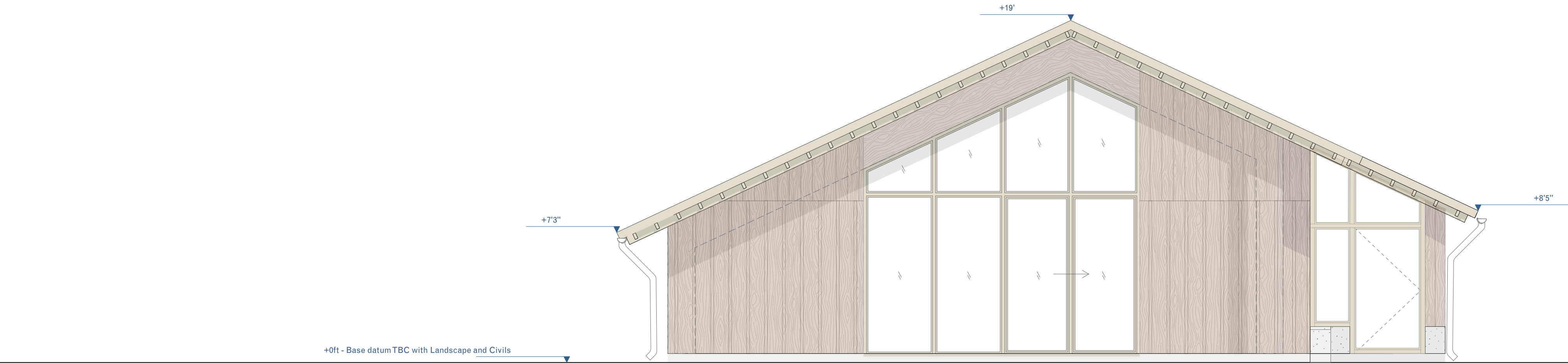
studio@tuckeydesign.com

London
+44 (0)20 8960 1909
58 Milson Road
London W14 0LB
United Kingdom

Switzerland
+41 (0)41 8871406
Gotthardstrasse 44
6490 Andermatt
Switzerland

Project	Sheboygan Point	Job Number	0301
Sheet Title	Proposed Wellness Centre - North	Scale at A1	50
Elevation	TDS_301_03_226	Scale at A3	100

Detail Design



Key Plan






Sheboygan Point
Wellness Centre

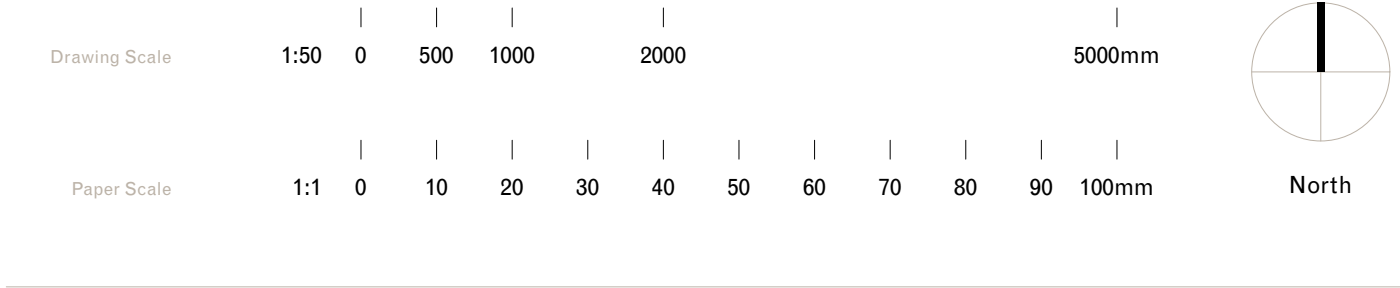
Proposed - East Elevation

General Notes

— Drawings are to be read in conjunction with all other consultants drawings and specifications.

External Finishes Key

-  4" thick Fond du Lac Stone
-  Timber board on board roof
-  Timber framed triple glazed window
-  Vertical timber weather boarding with 1"x2" vertical batten
-  Larger dimension Fond du Lac Stone with bushhammered finish



© Copyright				This drawing is the property of Tuckey Design Studio Ltd. Copyright and intellectual property of all information shown is reserved by them. The drawing is issued on the condition that it is not copied either wholly, or in part, without written consent from Tuckey Design Studio Ltd, except for planning purposes. Drawings not to be scaled, except for planning purposes. Contractor to work to figurative dimensions only. All dimensions to be checked on site before commencement of work or shop drawings. This drawing is to be read in conjunction with the specification when issued.			
A	Draft Material updates	04/04/2025	JM/ED				
-	Detail Design Issue	XX April 2025	RS/JM				
Rev.	Notes	Date	Drawn/Checked				

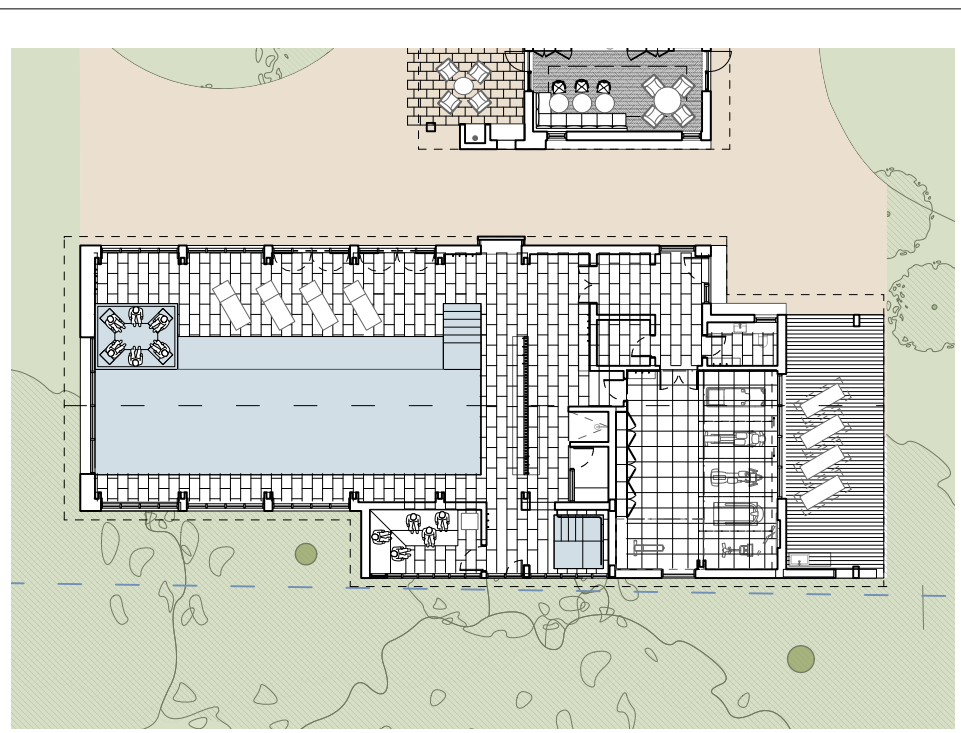
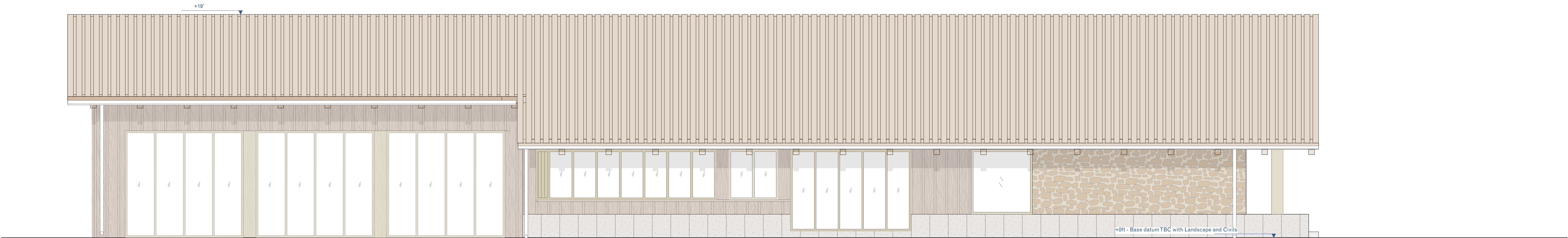
Tuckey Design Studio

studio@tuckeydesign.com

London	Switzerland
+44 (0)20 8960 1909	+41 (0)41 8871406
58 Milson Road	Gotthardstrasse 44
London W14 0LB	6490 Andermatt
United Kingdom	Switzerland

Project	Job Number
Sheboygan Point	0301
Sheet Title	Scale at A1
Proposed Wellness Centre - East	50
Elevation	Scale at A3
TDS_301_03_227	100

Detail Design



Key Plan

Sheboygan Point
Wellness Centre

Proposed - South Elevation

General Notes

— Drawings are to be read in conjunction with all other consultants drawings and specifications.

External Finishes Key



4" thick Fond du Lac Stone



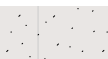
Timber board on board roof



Timber framed triple glazed window



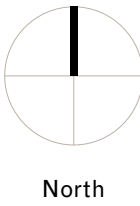
Vertical timber weather boarding with 1"x2" vertical batten



Larger dimension Fond du Lac Stone with bushhammered finish

Drawing Scale 1:50 0 500 1000 2000 5000mm

Paper Scale 1:1 0 10 20 30 40 50 60 70 80 90 100mm



© Copyright

This drawing is the property of Tuckey Design Studio Ltd. Copyright and intellectual property of all information shown is reserved by them. The drawing is issued on the condition that it is not copied either wholly, or in part, without written consent from Tuckey Design Studio Ltd, except for planning purposes. Drawings not to be scaled, except for planning purposes. Contractor to work to figurative dimensions only. All dimensions to be checked on site before commencement of work or shop drawings. This drawing is to be read in conjunction with the specification when issued.

A

Rev.

Draft Material updates

Detail Design Issue

04/04/2025

XX April 2025

Date

JM/ED

RS/JM

Drawn/

Checked

Tuckey Design Studio

studio@tuckeydesign.com

London
+44 (0)20 8960 1909
58 Milson Road
London W14 0LB
United Kingdom

Switzerland
+41 (0)41 8871406
Gotthardstrasse 44
6490 Andermatt
Switzerland

Project
Sheboygan Point

Sheet Title
Proposed Wellness Centre - South
Elevation

TDS_301_03_228

Job Number

0301

Scale at A1

50

Scale at A3

100

Detail Design

Referencing the Chalet



2

1

Model image of the proposed Villa one,
highlighting the layering of solid stone
chimneys alongside timber clad walls, timber
roofs and windows..

2

Reference archive image of the Chalet with
stone chimneys, timber walls, roof overhangs,
balconies and windows. .

Sheboygan Point
Garage and Apartment. Front elevation approach.

