



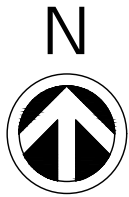
APRIL 7th, 2025

VOLLRATH COMPANY LLC

1236 NORTH 18th STREET , SHEBOYGAN WI 53081

A0.1 DRONE SURVEY IMAGE

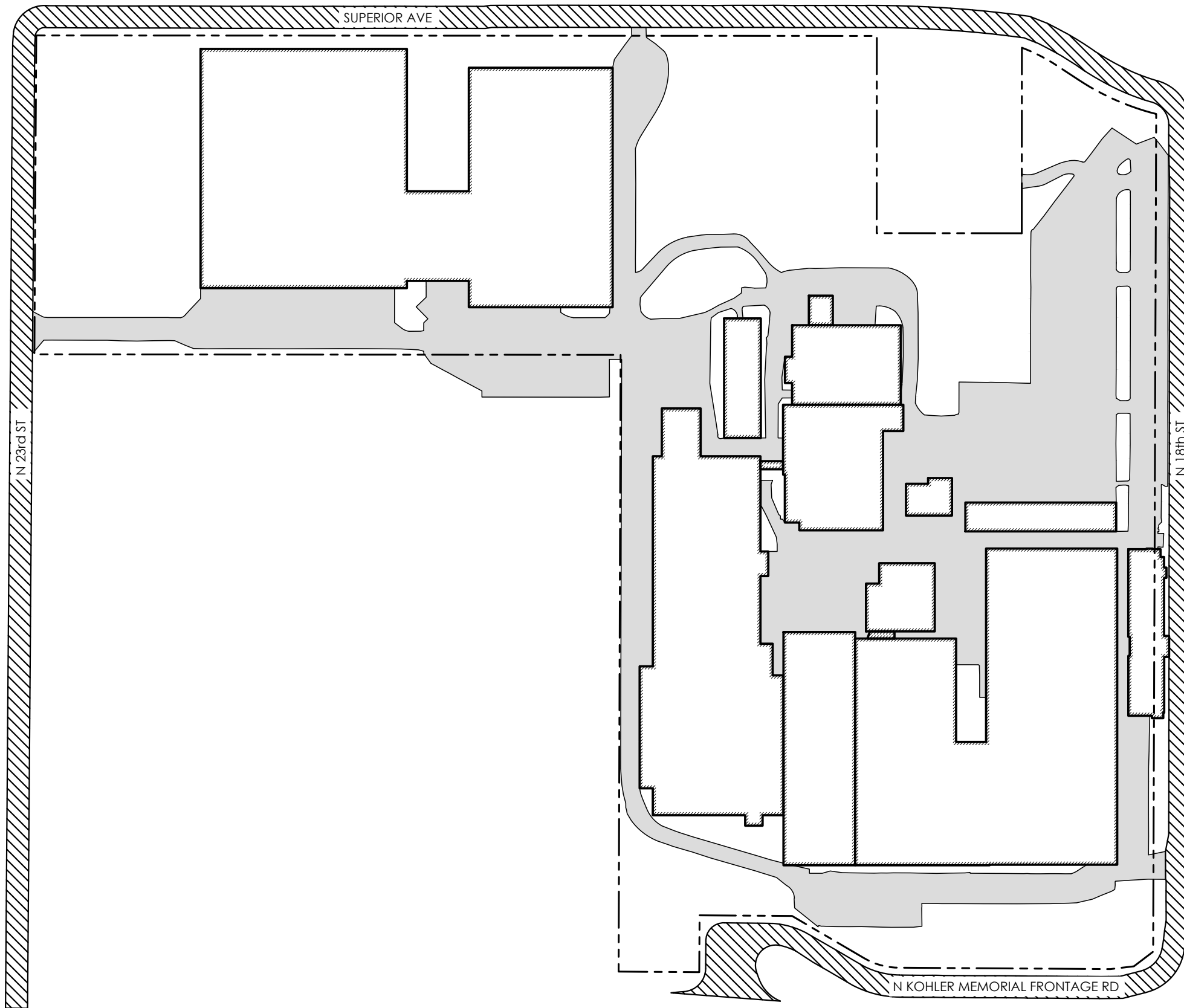
PROJ. NO. 2024-093



SCALE: "1=200"



Abacus Architects, Inc. holds all rights of copyright in and to these prints, drawings and documents. No reproduction, copying, alteration, modification, usage, incorporation into other documents, or assignment of the same may occur without the prior written permission of Abacus Architects, Inc. © AbacusArchitects, Inc. 2024



APRIL 7th, 2025

VOLLRATH COMPANY LLC

1236 NORTH 18th STREET , SHEBOYGAN WI 53081

A1 PHASE 1 - EXISTING

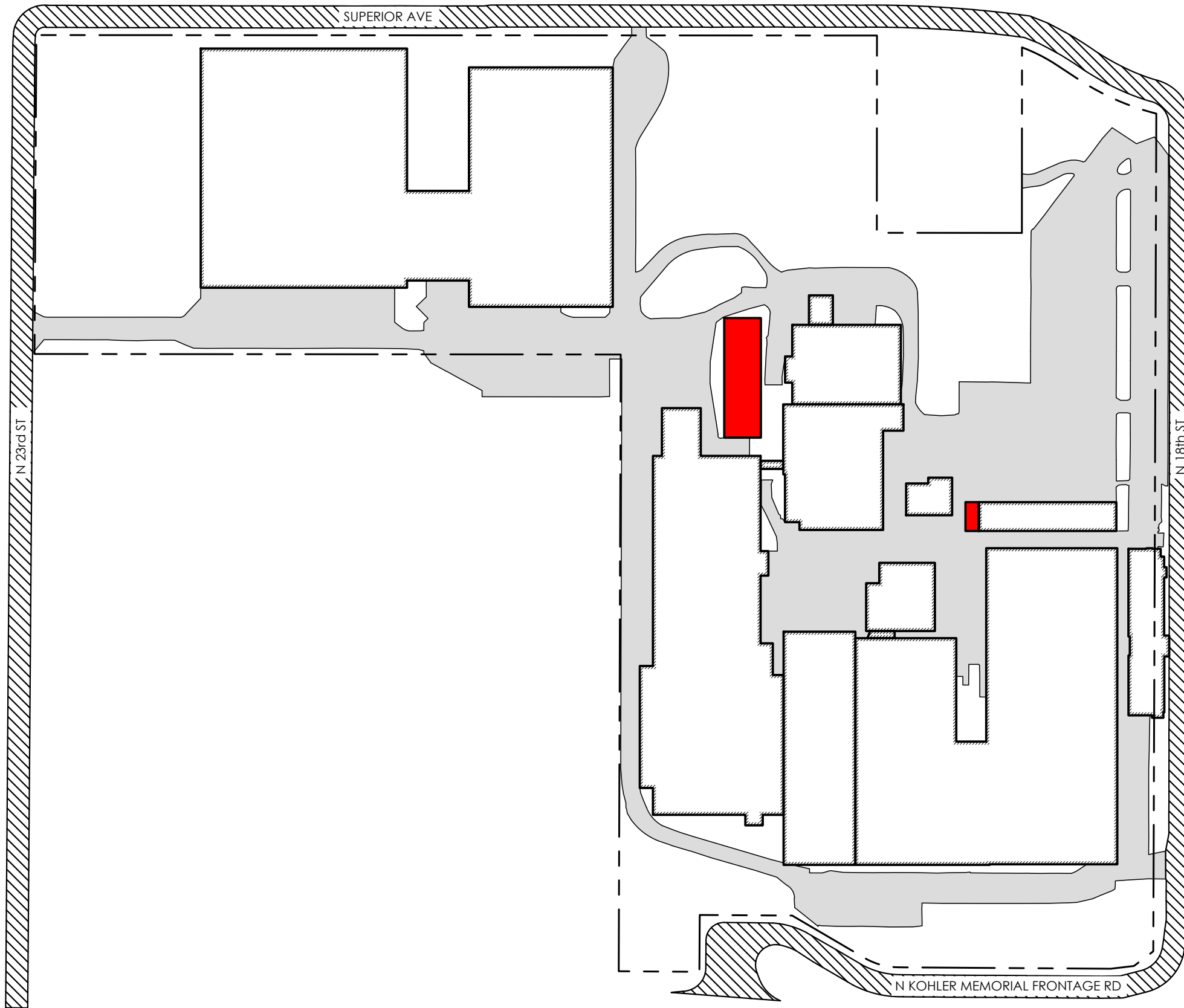
PROJ. NO. 2024-093



SCALE: "1=200"



Abacus Architects, Inc. holds all rights of copyright in and to these prints, drawings and documents. No reproduction, copying, alteration, modification, usage, incorporation into other documents, or assignment of the same may occur without the prior written permission of Abacus Architects, Inc. © Abacus Architects, Inc. 2024



APRIL 7th, 2025

VOLLRATH COMPANY LLC

1236 NORTH 18th STREET , SHEBOYGAN WI 53081

A2 PHASE 2 - DEMOLITION

PROJ. NO. 2024-093



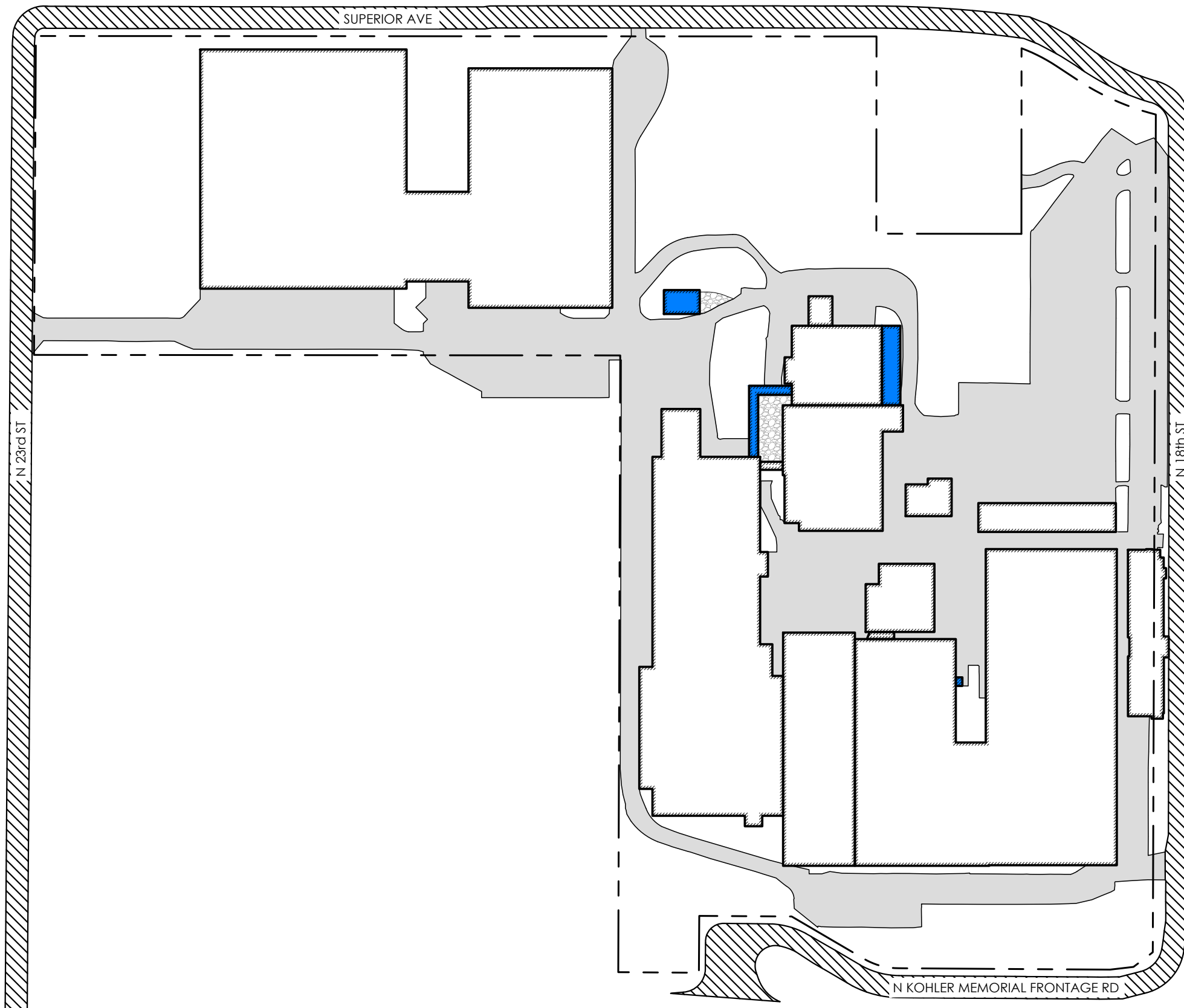
SCALE: "1=200"



Abacus Architects, Inc. holds all rights of copyright in and to these prints, drawings and documents. No reproduction, copying, alteration, modification, usage, incorporation into other documents, or assignment of the same may occur without the prior written permission of Abacus Architects, Inc. © Abacus Architects, Inc. 2024

04/09/25

P:\2024-CONTRACTS\2024-93 Vollrath Company\Phase - 2\Construction Documents\3.3 Site\Project Phasing\2024-93 - Project Phasing.dwg



APRIL 7th, 2025

VOLLRATH COMPANY LLC

1236 NORTH 18th STREET , SHEBOYGAN WI 53081

A3 PHASE 3 - NEW CONSTRUCTION

PROJ. NO. 2024-093



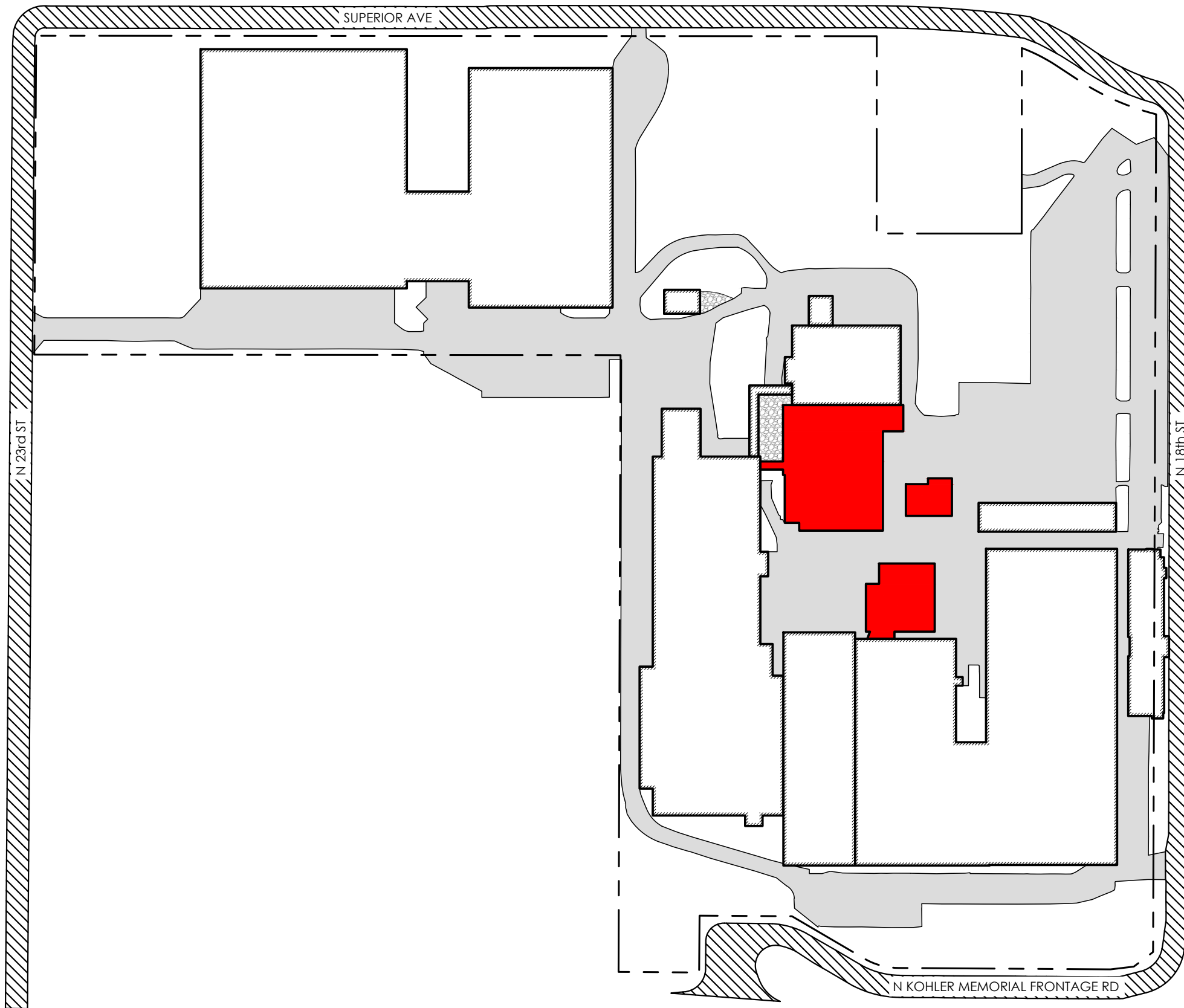
SCALE: "1=200"



Abacus Architects, Inc. holds all rights of copyright in and to these prints, drawings and documents. No reproduction, copying, alteration, modification, usage, incorporation into other documents, or assignment of the same may occur without the prior written permission of Abacus Architects, Inc. © Abacus Architects, Inc. 2024

04/09/25

P:\2024-CONTRACTS\2024-93 Vollrath Company\Phase - 2\Construction Documents\3.3 Site\Project Phasing\2024-93 - Project Phasing.dwg



APRIL 7th, 2025

VOLLRATH COMPANY LLC

1236 NORTH 18th STREET , SHEBOYGAN WI 53081

A4 PHASE 4 - DEMOLITION

PROJ. NO. 2024-093



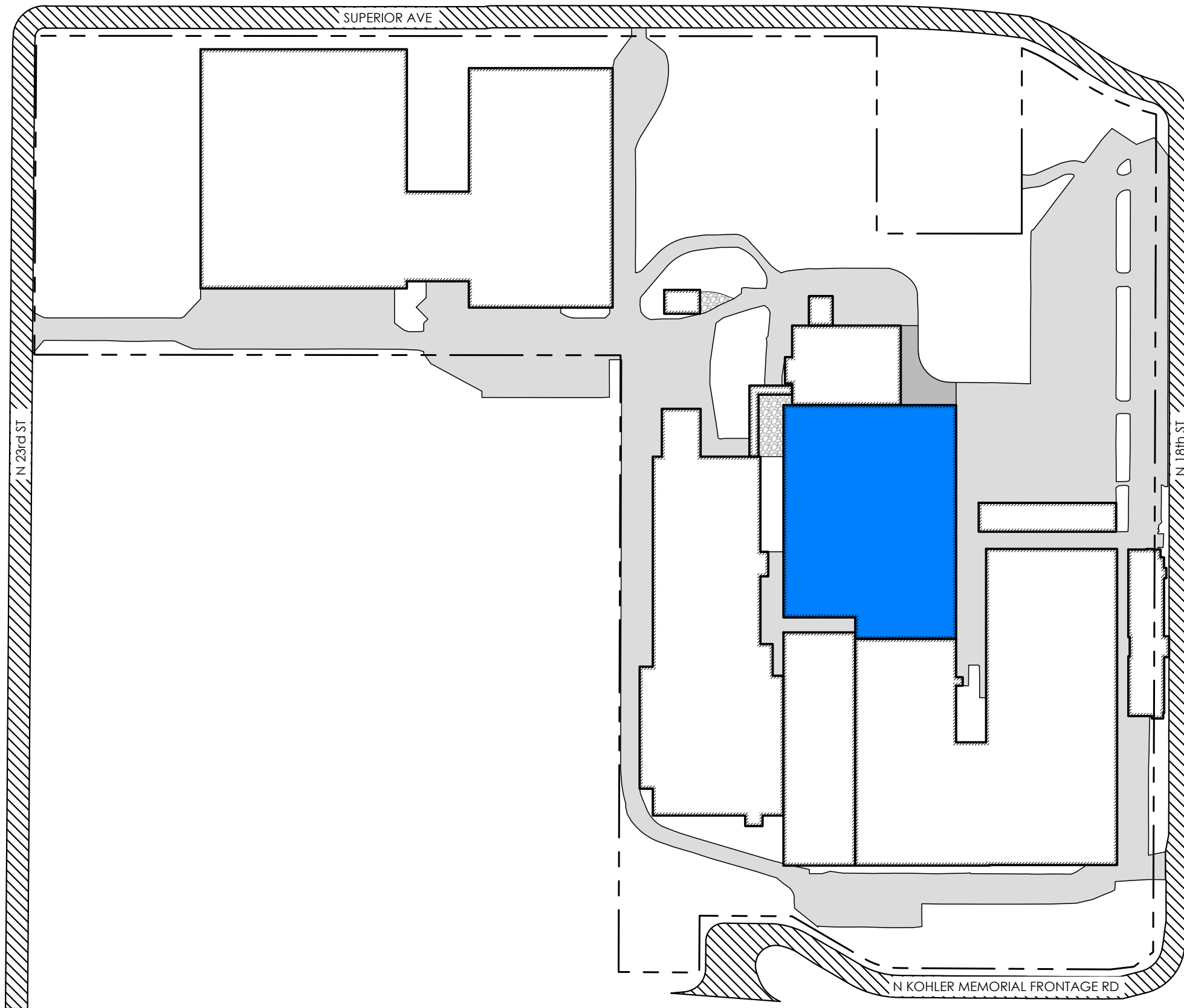
SCALE: "1=200"



Abacus Architects, Inc. holds all rights of copyright in and to these prints, drawings and documents. No reproduction, copying, alteration, modification, usage, incorporation into other documents, or assignment of the same may occur without the prior written permission of Abacus Architects, Inc. © Abacus Architects, Inc. 2024

04/09/25

P:\2024-CONTRACTS\2024-93 Vollrath Company\Phase - 2\Construction Documents\3.3 Site\Project Phasing\2024-93 - Project Phasing.dwg



APRIL 7th, 2025

VOLLRATH COMPANY LLC

1236 NORTH 18th STREET , SHEBOYGAN WI 53081

A5 PHASE 5 - NEW CONSTRUCTION

PROJ. NO. 2024-093



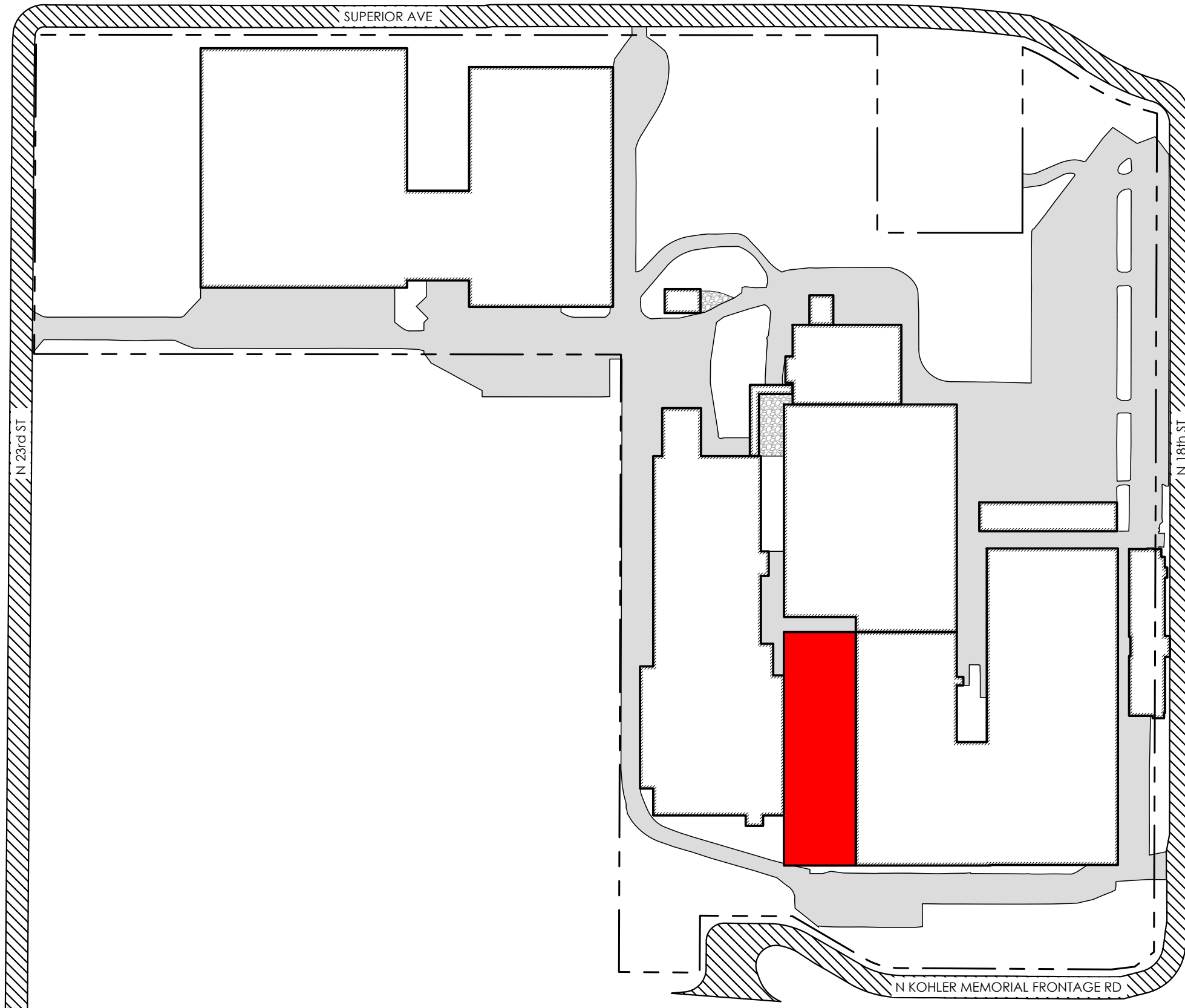
SCALE: "1=200"



Abacus Architects, Inc. holds all rights of copyright in and to these prints, drawings and documents. No reproduction, copying, alteration, modification, usage, incorporation into other documents, or assignment of the same may occur without the prior written permission of Abacus Architects, Inc. © Abacus Architects, Inc. 2024

04/09/25

P:\2024-CONTRACTS\2024-93 Vollrath Company\Phase - 2\Construction Documents\3.3 Site\Project Phasing\2024-93 - Project Phasing.dwg



APRIL 7th, 2025

VOLLRATH COMPANY LLC

1236 NORTH 18th STREET , SHEBOYGAN WI 53081

A6 PHASE 6 - DEMOLITION

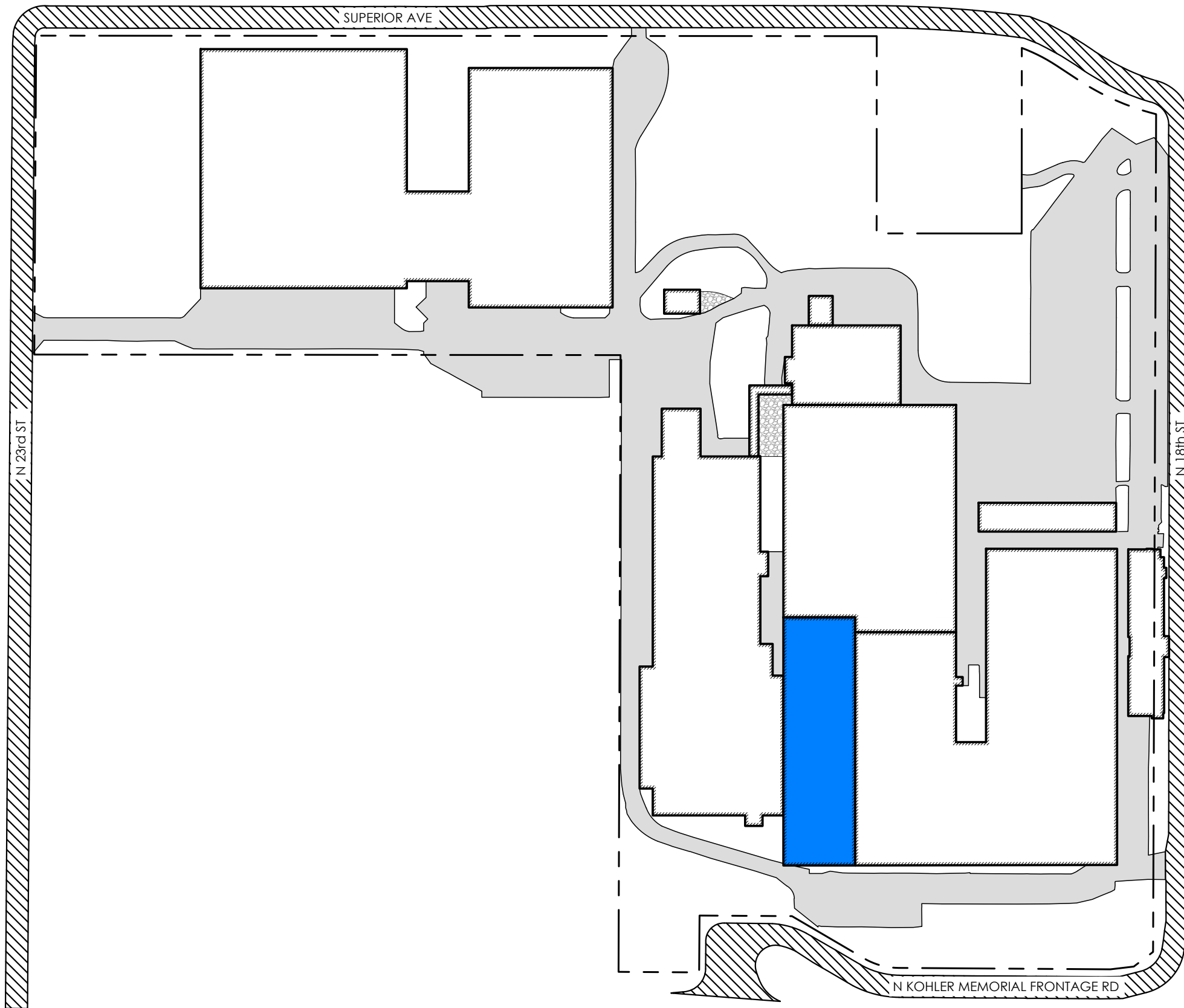
PROJ. NO. 2024-093



SCALE: "1=200"



Abacus Architects, Inc. holds all rights of copyright in and to these prints, drawings and documents. No reproduction, copying, alteration, modification, usage, incorporation into other documents, or assignment of the same may occur without the prior written permission of Abacus Architects, Inc. © Abacus Architects, Inc. 2024



APRIL 7th, 2025

VOLLRATH COMPANY LLC

1236 NORTH 18th STREET , SHEBOYGAN WI 53081

A7 PHASE 7 - NEW CONSTRUCTION

PROJ. NO. 2024-093



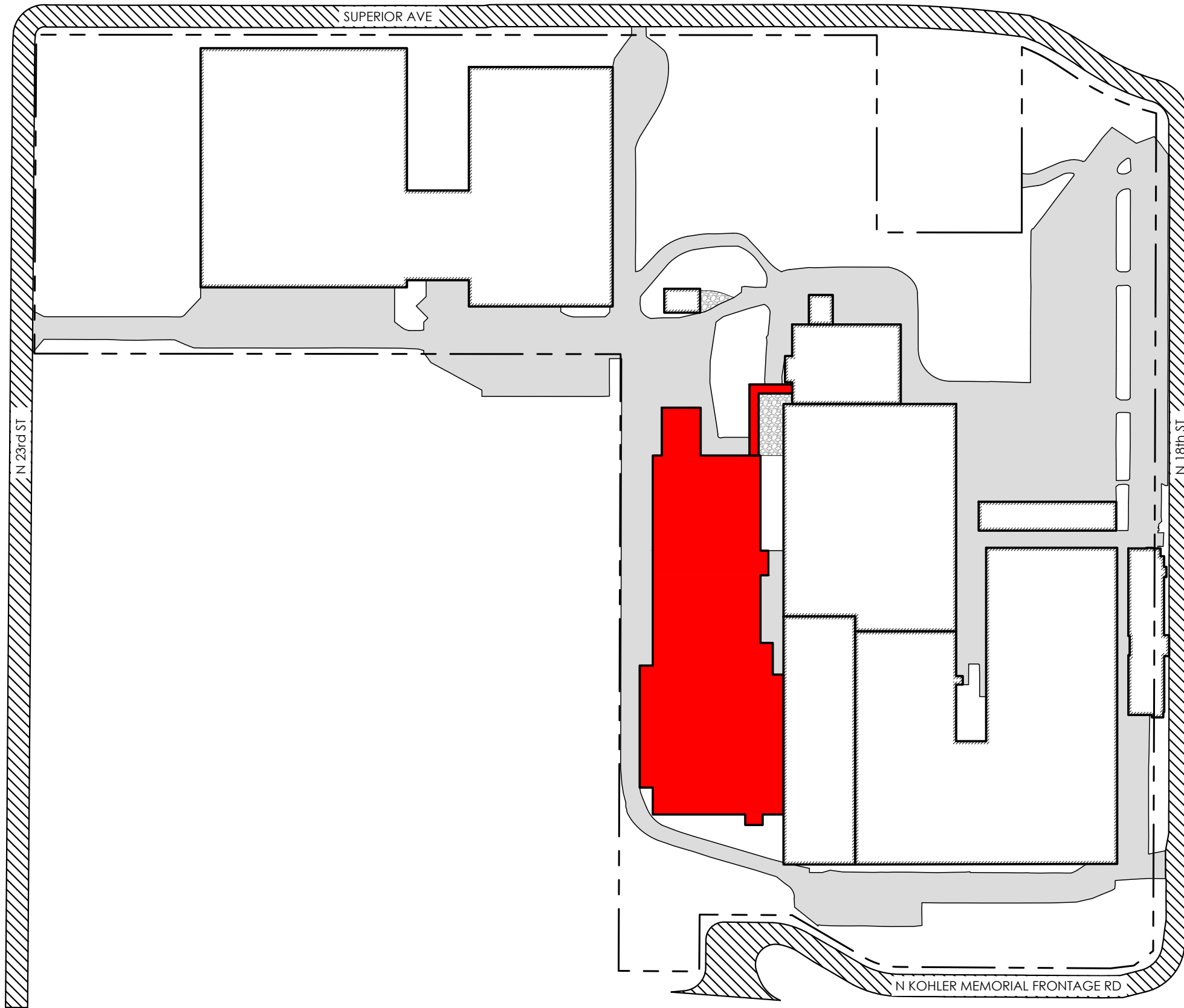
SCALE: "1=200"



Abacus Architects, Inc. holds all rights of copyright in and to these prints, drawings and documents. No reproduction, copying, alteration, modification, usage, incorporation into other documents, or assignment of the same may occur without the prior written permission of Abacus Architects, Inc. © Abacus Architects, Inc. 2024

04/09/25

P:\2024-CONTRACTS\2024-93 Vollrath Company\Phase - 2\Construction Documents\3.3 Site\Project Phasing\2024-93 - Project Phasing.dwg



APRIL 7th, 2025

VOLLRATH COMPANY LLC

1236 NORTH 18th STREET , SHEBOYGAN WI 53081

A8 PHASE 8 - DEMOLITION

PROJ. NO. 2024-093



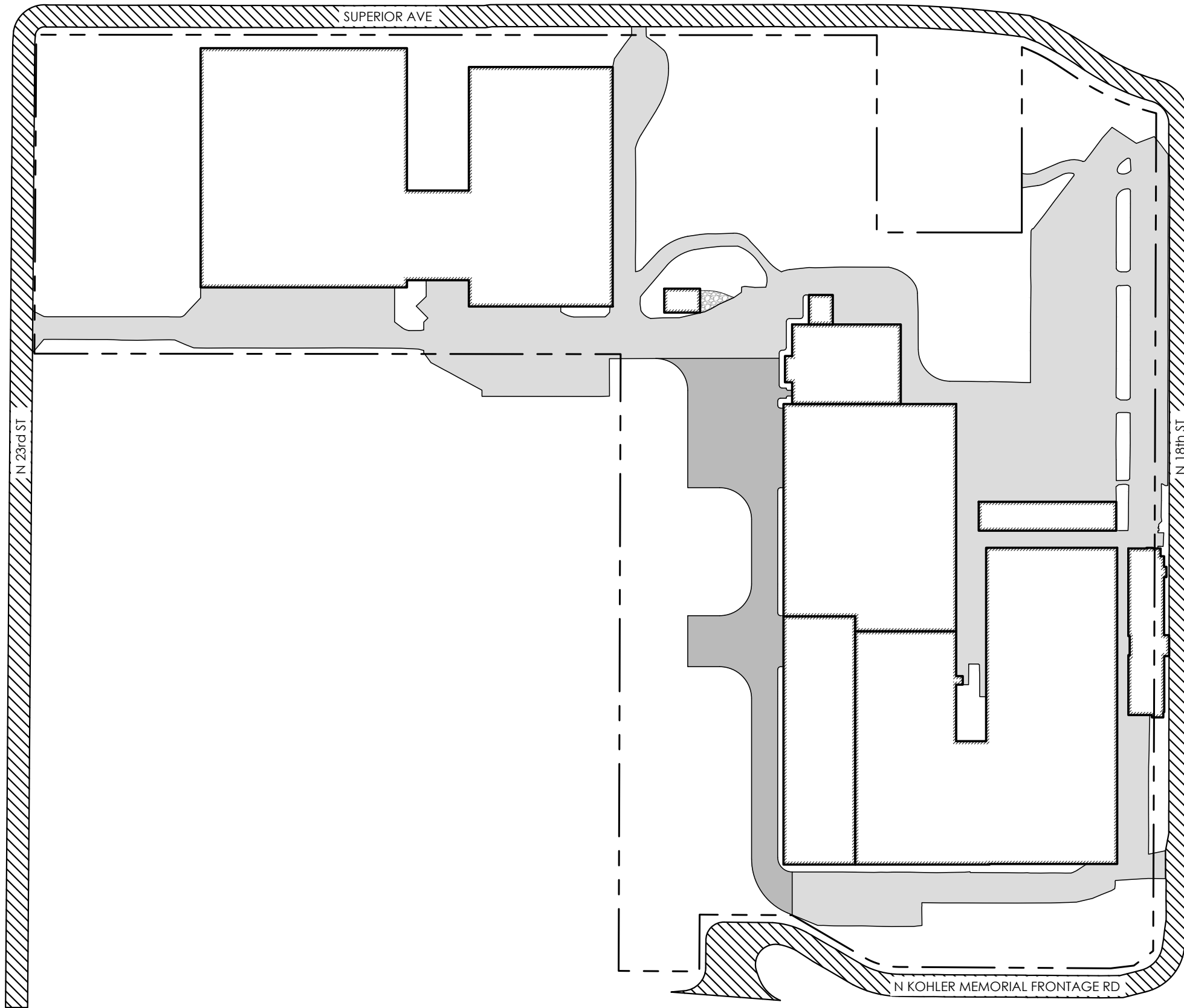
SCALE: "1=200"



Abacus Architects, Inc. holds all rights of copyright in and to these prints, drawings and documents. No reproduction, copying, alteration, modification, usage, incorporation into other documents, or assignment of the same may occur without the prior written permission of Abacus Architects, Inc. © Abacus Architects, Inc. 2024

04/09/25

P:\2024-CONTRACTS\2024-93 Vollrath Company\Phase - 2\Construction Documents\3.3 Site\Project Phasing\2024-93 - Project Phasing.dwg



APRIL 7th, 2025

VOLLRATH COMPANY LLC

1236 NORTH 18th STREET , SHEBOYGAN WI 53081

A9 PHASE 9 - FINISHED

PROJ. NO. 2024-093



SCALE: "1=200"



Abacus Architects, Inc. holds all rights of copyright in and to these prints, drawings and documents. No reproduction, copying, alteration, modification, usage, incorporation into other documents, or assignment of the same may occur without the prior written permission of Abacus Architects, Inc. © Abacus Architects, Inc. 2024

SITE PROPERTIES:

TAX ID: 59281214074
ZONING: SI - SUBURBAN INDUSTRIAL DISTRICT

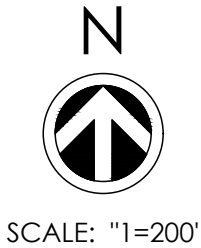
EXISTING SITE:

TOTAL PROPERTY AREA = 1,937,549 SQ.FT. = 44.48 ACRES
ROOFS = 739,953 SQ.FT. = 16.99 ACRES
PAVEMENT = 559,721 SQ.FT. = 12.85 ACRES
IMPERVIOUS SURFACE = 67.1%
FACADE LENGTH = 10,603 FT

PROPOSED FINAL SITE (PHASE 9):

TOTAL PROPERTY AREA = 1,937549 SQ.FT. = 44.48 ACRES
ROOFS = 696,654 SQ.FT. = 16.00 ACRES
PAVEMENT = 487,954 SQ.FT. = 11.20 ACRES
IMPERVIOUS SURFACE = 61.2%
FACADE LENGTH = 8,107 FT

APRIL 7th, 2025
VOLLRATH COMPANY LLC
1236 NORTH 18th STREET , SHEBOYGAN WI 53081
A10 SITE PROPERTIES
PROJ. NO. 2024-093



Abacus Architects, Inc. holds all rights of copyright in and to these prints, drawings and documents. No reproduction, copying, alteration, modification, usage, incorporation into other documents, or assignment of the same may occur without the prior written permission of Abacus Architects, Inc.
© Abacus Architects, Inc. 2024