

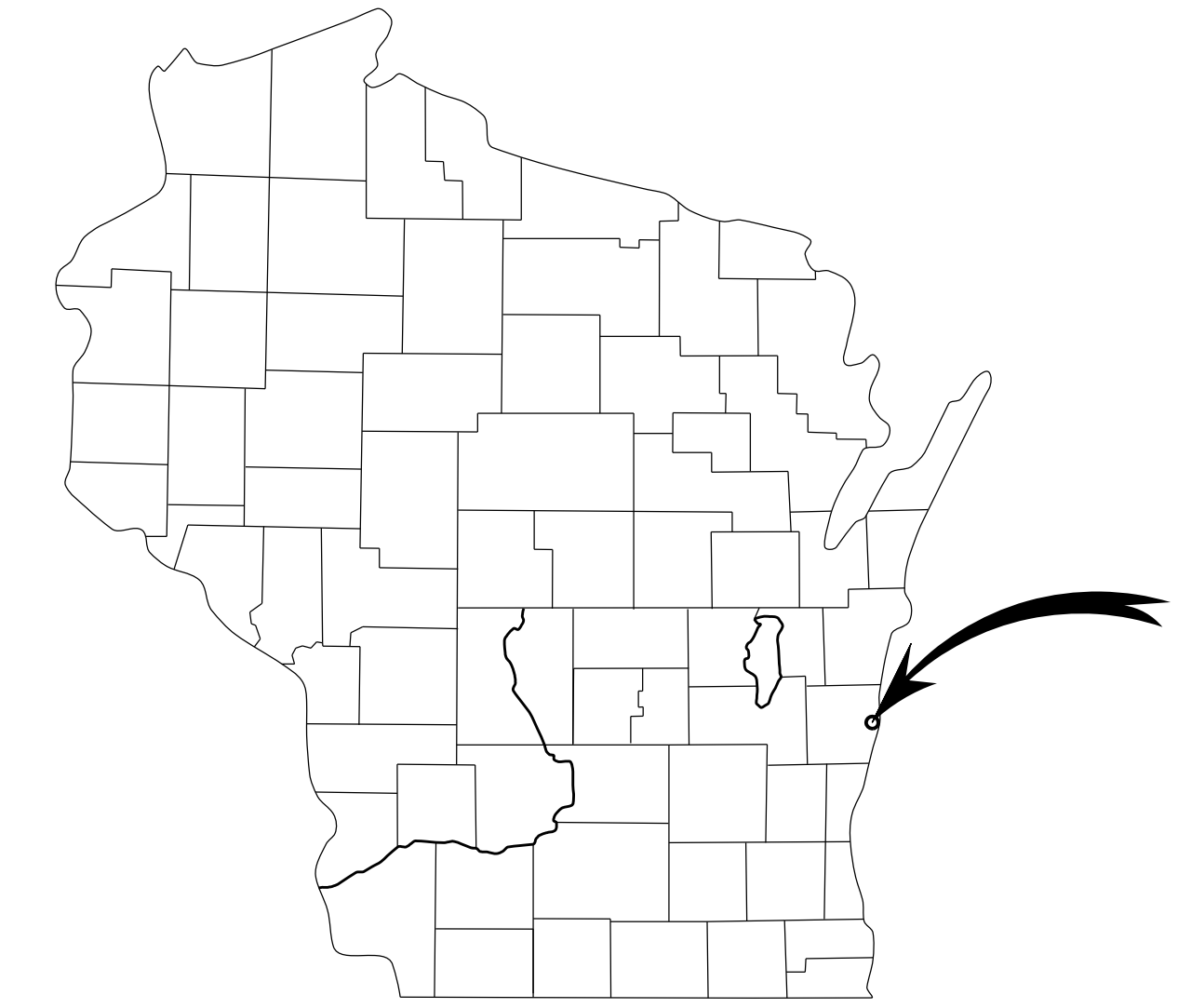
Wisconsin HPGN Grid Coordinates, South Zone
 Combined Grid Factor = 0.99993688
 NAVD 88 Elevations
 Distances shown are GROUND
 COORDINATE SYSTEM OF DESIGN FILE
 MUST BE PRESERVED

LEGEND

- 856.0' --- MAJOR GROUND CONTOUR
- MINOR GROUND CONTOUR
- GRAVEL EDGE
- x-x-x-x-x- SUB FENCE
- FO- UG FIBER OPTIC
- C- UNDERGROUND GAS
- OH- OVERHEAD ELECTRIC
- E- UNDERGROUND ELECTRIC
- W- WATER MAIN
- ▣ CATCH BASIN
- ⊙ MANHOLE
- ⊕ TREE
- ⊕ WATER VALVE
- ⊕ GAS VALVE



CITY OF SHEBOYGAN



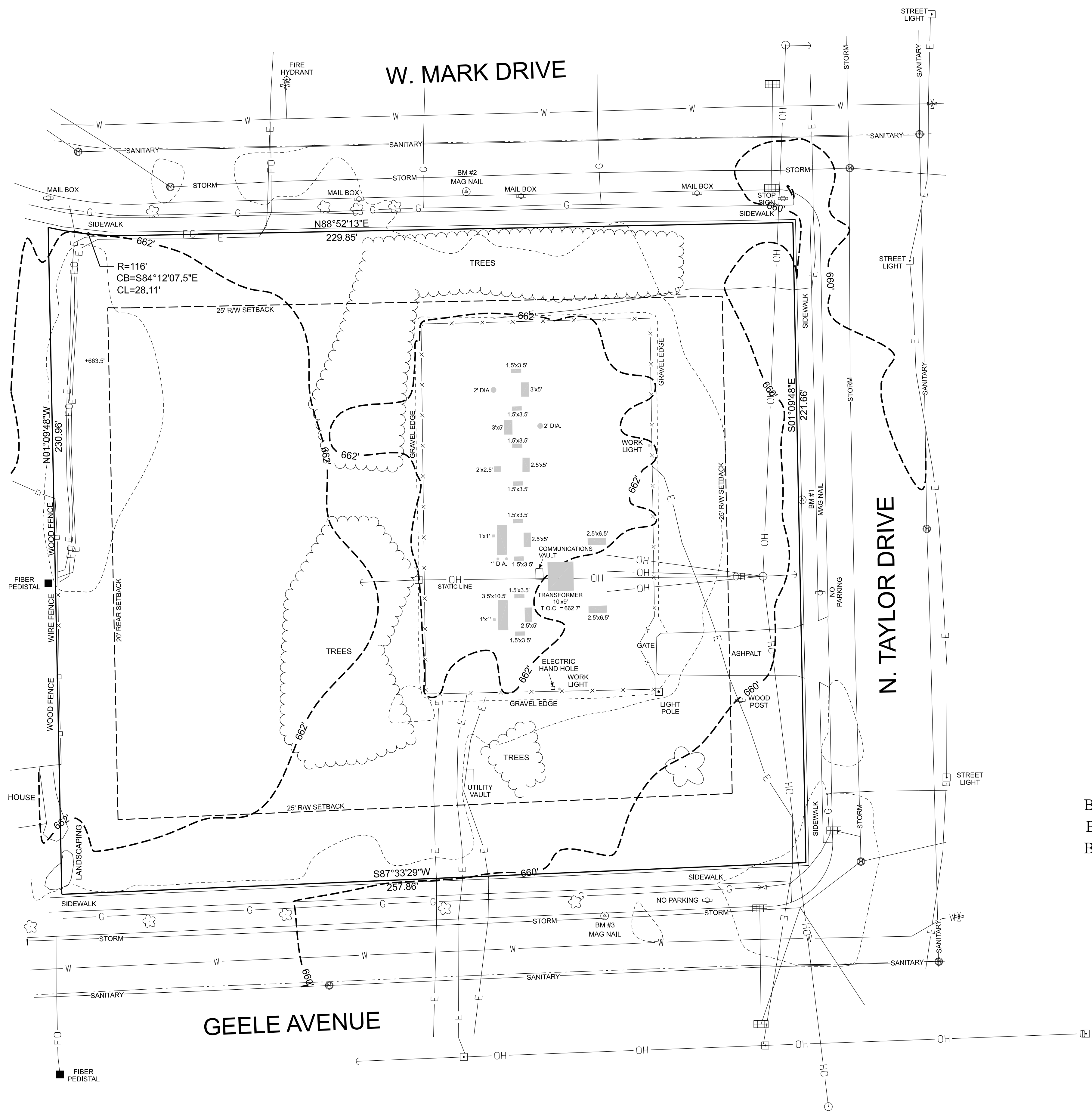
BENCHMARK INFORMATION

BM #1 N=652675.226 E=2562826.607 ELEV= 659.84'
 BM #2 N=652781.977 E=2562710.315 ELEV= 660.46'
 BM #3 N=652531.208 E=2562758.197 ELEV= 658.86'

THESE ARE STATE PLANE COORDINATES,
 SOUTH ZONE

SUBSTATION SITE ADDRESS
 2214 N TAYLOR DRIVE
 SHEBOYGAN, WI 53081

LATITUDE: 43° 46' 7.36"N
 LONGITUDE: 87° 45' 0.47"W



File: A:\Utilities\Projects\Sheboygan\Substations\22nd Street\16157-02-01.dwg, Title: gpg

NO.	DATE	REVISION	BY
0	5/24/23	CURRENT CONDITIONS	PKK AS AS
			BY: CHKD/ APVD

CONFIDENTIAL
 These documents are for the use of Alliant Energy. Alliant Energy disclaims all warranties, both expressed and implied. Use by anyone other than Alliant Energy is at their own risk.



WISCONSIN POWER AND LIGHT
 32nd STREET
 CITY OF SHEBOYGAN, WI
SITE PLAN
 PART OF THE SE 1/4 OF NW 1/4, SEC. 16, T15N, R23E
 CITY OF SHEBOYGAN, SHEBOYGAN COUNTY, WISCONSIN
 SCALE: 1"=20' DWG. NO. **16157-02-01**