



POPEYES

POPEYES
E11507
Sheboygan, WI
November 09, 2023

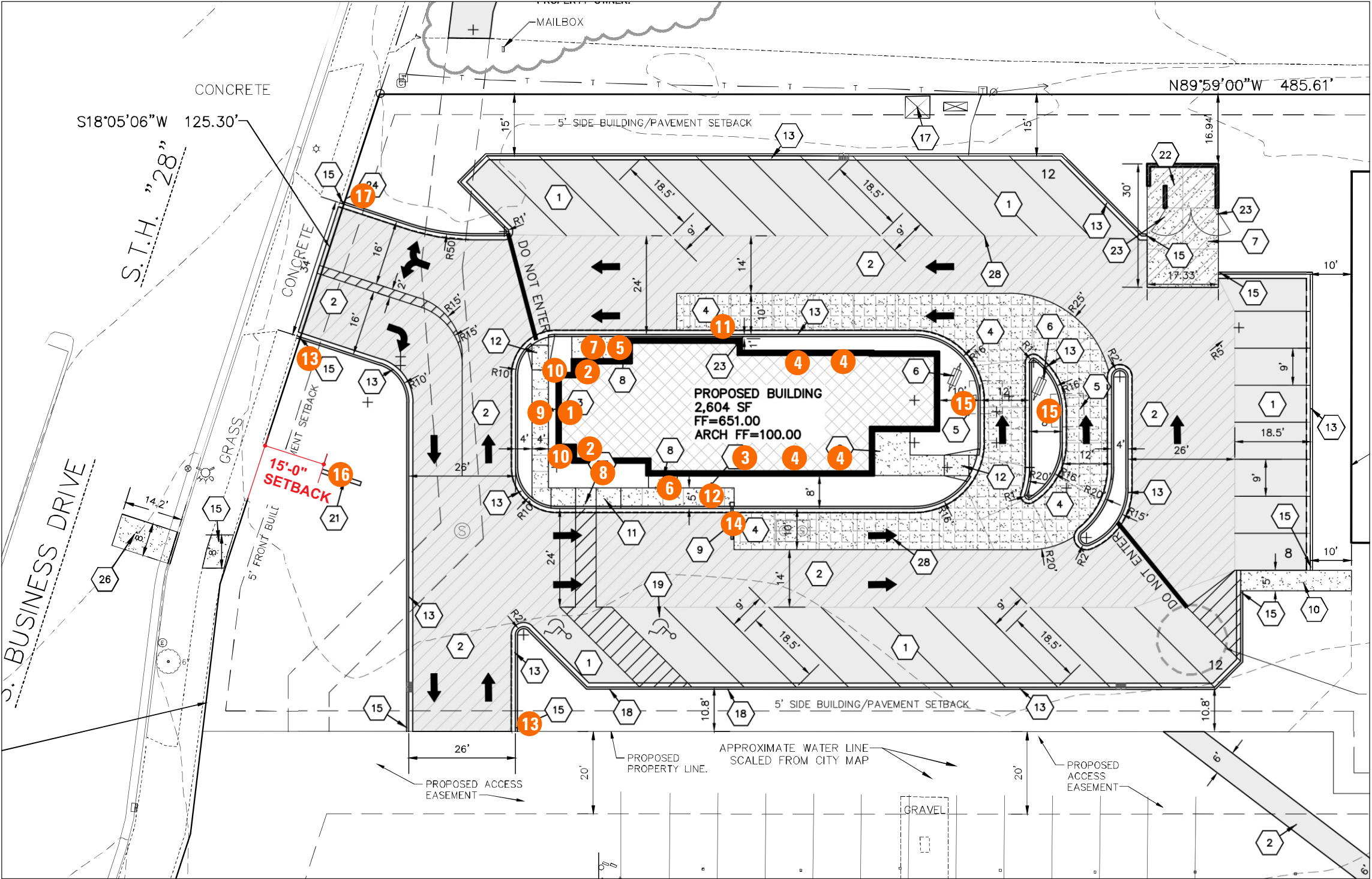
Allen Industries

YOUR BRAND AT ITS BEST™

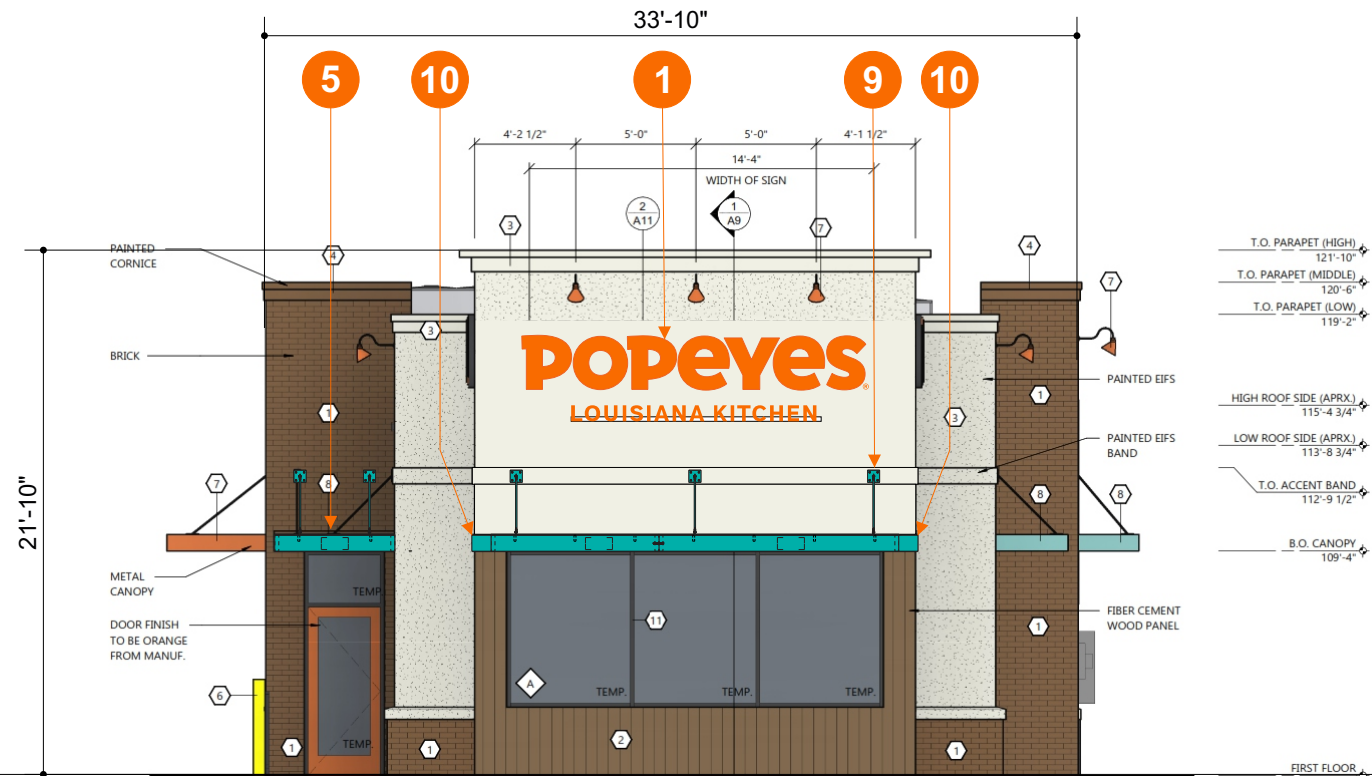
1-800-967-2553
www.allenindustries.com

Customer Approval / Signature

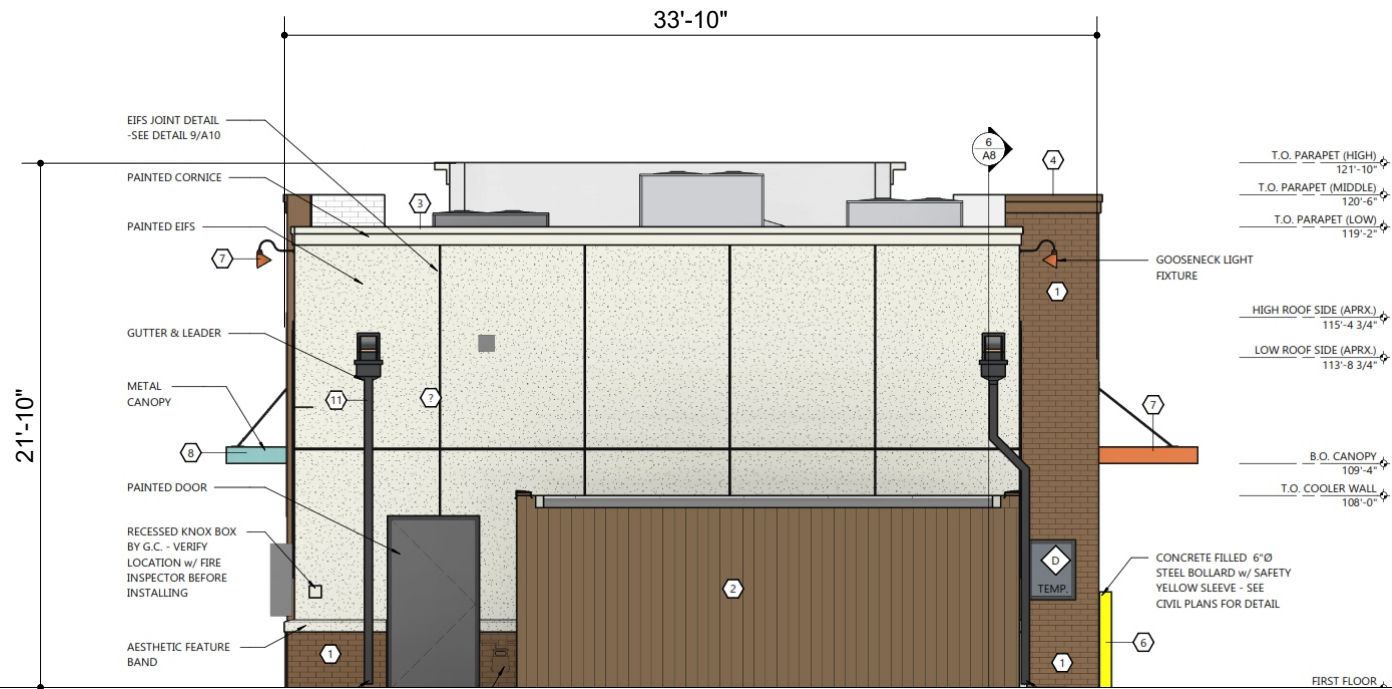
Signature: _____ Date: _____



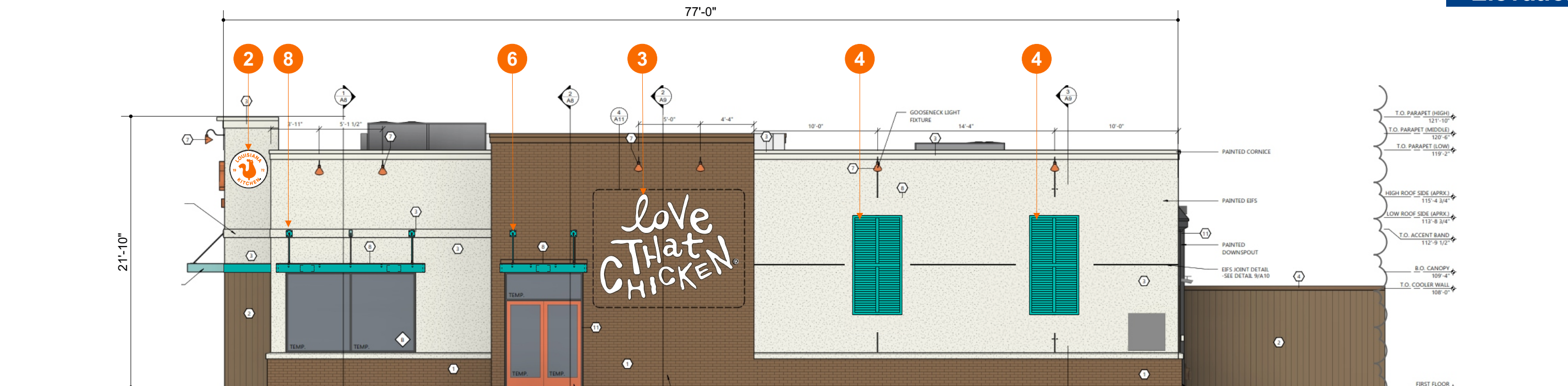
- 1 (1) 27" Popeyes Channel Letters w/ Tagline
- 2 (2) Popeyes - 36" Seal Sign_White
- 3 (1) "Love That Chicken" Letters
- 4 (4) 4' x 8' Decorative Shutters
- 5 (1) 5' Teal Canopy
- 6 (1) 7' Teal Canopy
- 7 (1) 10' Teal Canopy
- 8 (1) 12' Teal Canopy
- 9 (1) 17' Teal Canopy
- 10 (2) Fascia Bands
- 11 (1) 9'-0" Drive Thru Window Canopy
- 12 (1) Drive Thru Directional
- 13 (2) Enter/Enter Directional
- 14 (1) Clearance Bar
- 15 (2) Drive Thru Order Canopies
- 16 (1) Pylon Sign
- 17 (1) Do Not Enter/Thanks Y'all - Directional



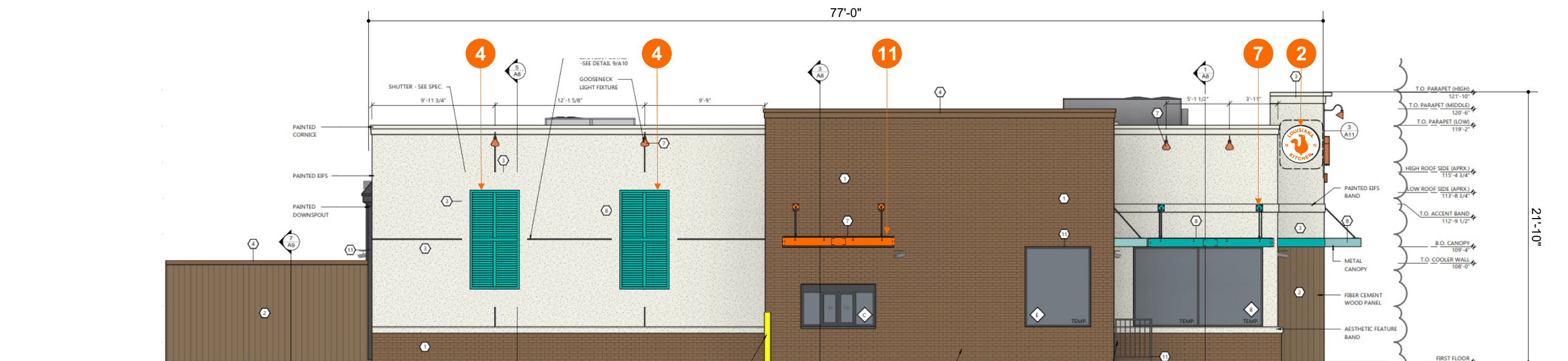
Front Elevation
Scale: 1/8"=1'-0"



Rear Elevation
Scale: 1/8"=1'-0"



Main Entrance Elevation
Scale: 1/8"=1'-0"

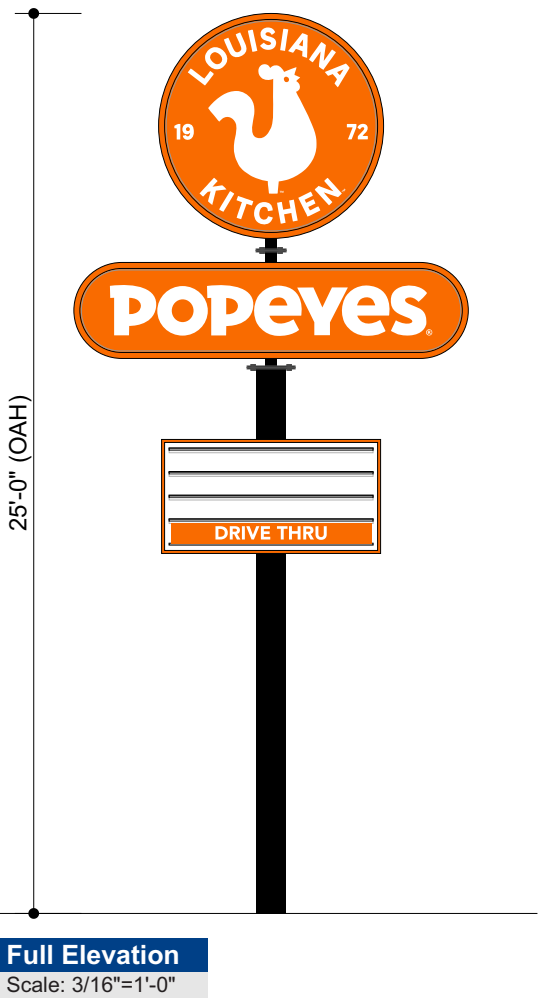
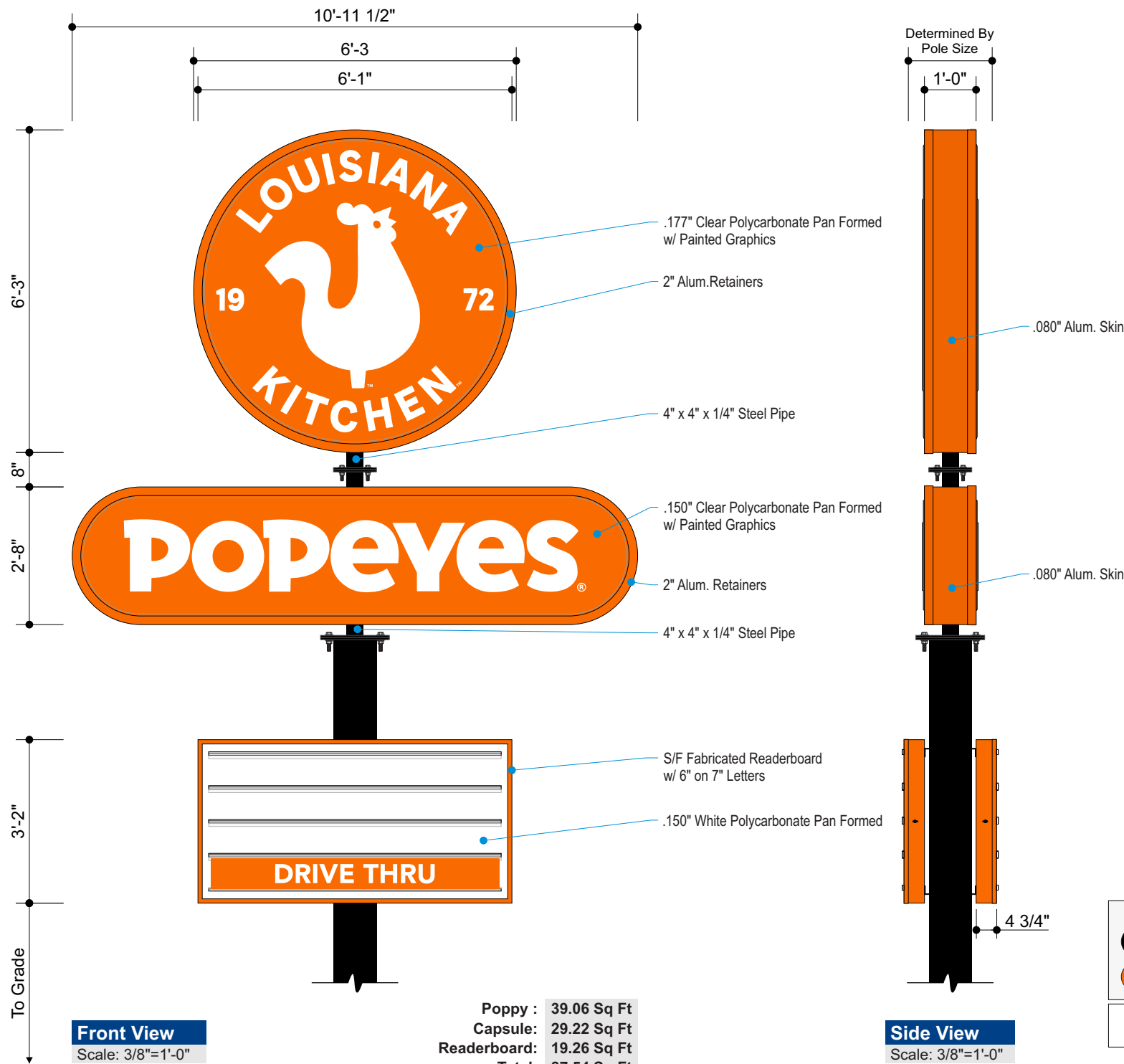


Drive-Thru Elevation
Scale: 1/8"=1'-0"

Popeyes - P60 Pylon Sign w/ RB

Formed Face, LED Internal Illumination
POP22-P60-6.3, POP22-AP60, POP22-RB-SF3X6-X2

DESIGN INTENT ONLY
Engineering Required to
Determine Actual Production
& Installation Requirements



Vinyl Specifications

- 3M 3630-20 White
- 3M 3630-84 Tangerine

Paint Specifications

- Black
- Paint to Match Pantone 3564C - Orange

All paint finishes to be Satin unless otherwise specified

General Specifications:

- Faces:** Poppy: .177" Clear Polycarbonate Pan Formed Faces w/ 2nd Surface 3M Vinyl & Diffuser
Capsule: .150" Clear Polycarbonate Pan Formed Faces w/ 2nd Surface 3M Vinyl & Diffuser
RB: .150" White Polycarbonate Pan Formed Faces
- Cabinets:** Constructed w/ Alum. Angle and .080 Alum. Skin Retainers - 2"
- RB:** Set of S/F Cabinets w/ Flat Faces. 4 - Lines of 6" Letters on 7" Panel
- Illum:** White LEDs as Required per Manufacturer, Self Contained Power Supplies
- Electrical:** Actual Number of Circuits to be Determined by Licensed Electrical Contractor
(1) 20 AMP Circuit, 120 Volts - All Wiring Shall be 12 GA
- Quantity:** (1) ONE



Electric Sign
Complies with
UL48

THIS SIGN IS INTENDED TO BE INSTALLED IN ACCORDANCE WITH THE REQUIREMENTS OF ARTICLE 600 OF THE NATIONAL ELECTRICAL CODE AND/OR OTHER APPLICABLE LOCAL CODES. THIS INCLUDES PROPER GROUNDING AND BONDING OF THE SIGN.



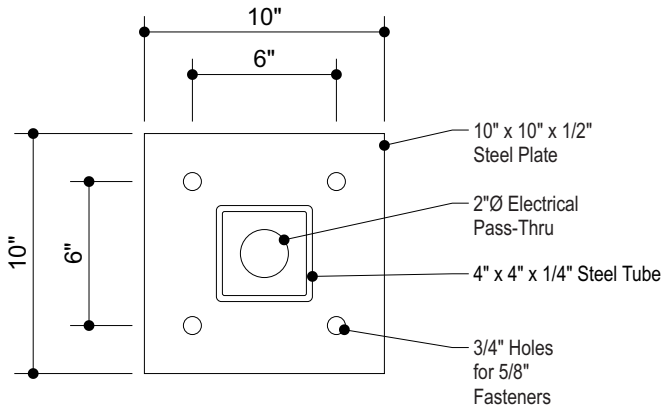
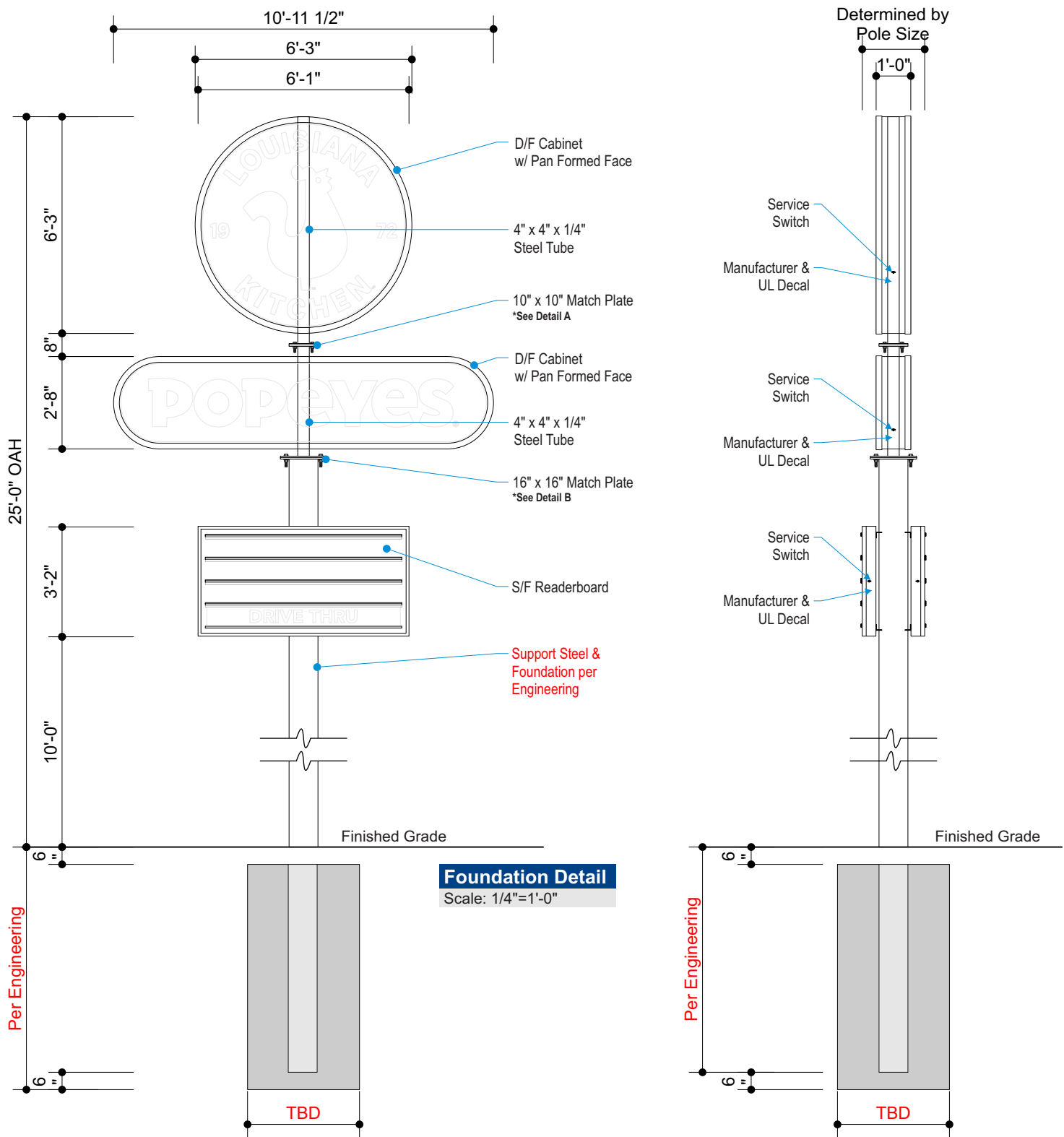
PICK-UPS REQUIRED

Popeyes - P60 Pylon Sign w/ RB

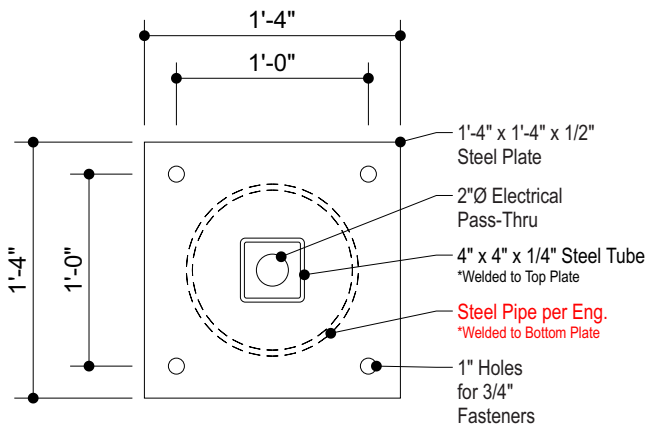
Foundation Detail

POP22-P60-6.3, POP22-AP60, POP22-RB-SF3X6-X2

DESIGN INTENT ONLY
Engineering Required to
Determine Actual Production
& Installation Requirements



A Small Match Plate
Scale: 1 1/2"=1'-0"
Quantity: 2



B Large Match Plate
Scale: 1"=1'-0"
Quantity: 2



Electric Sign
Complies with
UL48

THIS SIGN IS INTENDED TO BE INSTALLED IN ACCORDANCE WITH THE REQUIREMENTS OF ARTICLE 600 OF THE NATIONAL ELECTRICAL CODE AND/OR OTHER APPLICABLE LOCAL CODES. THIS INCLUDES PROPER GROUNDING AND BONDING OF THE SIGN.

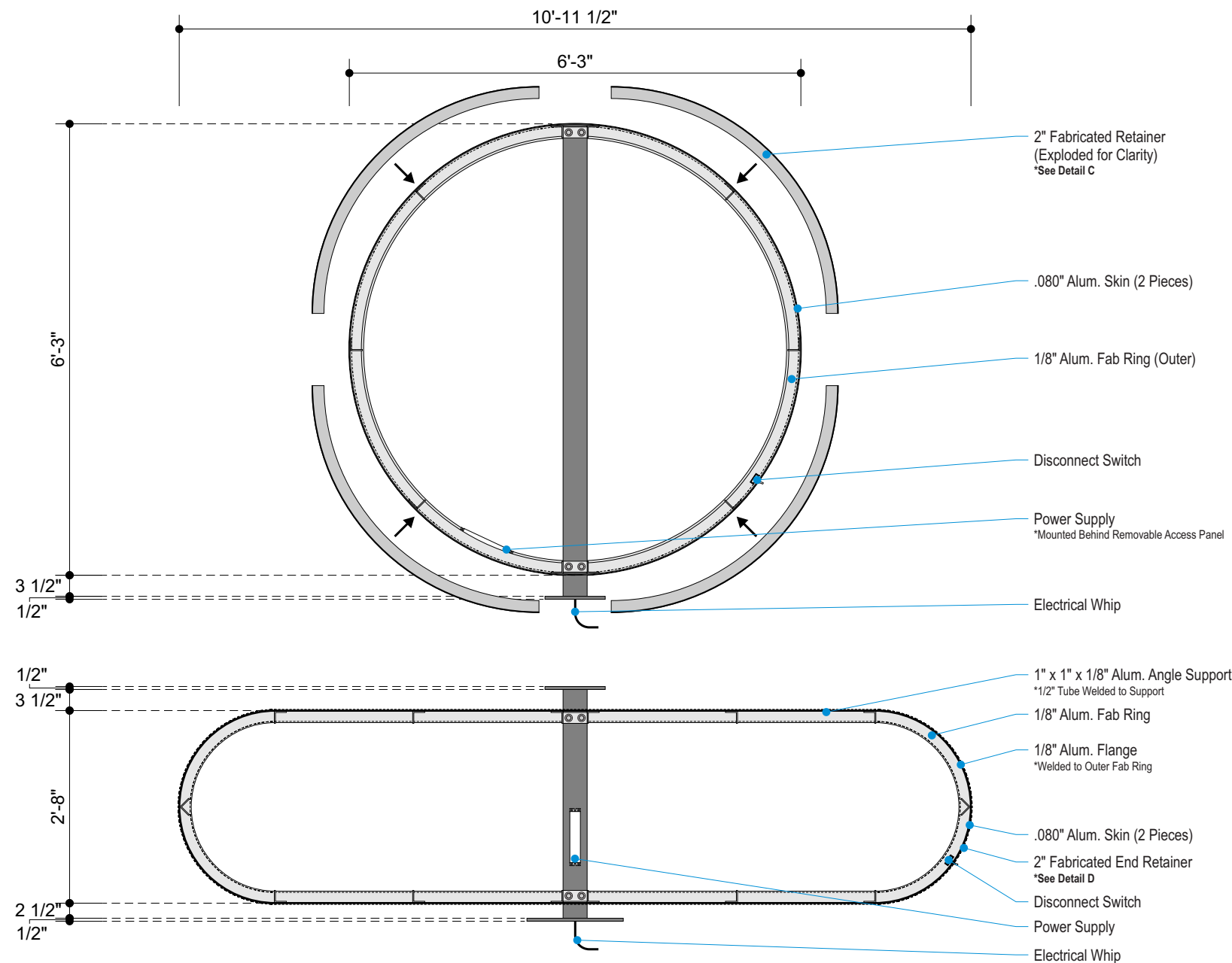


PICK-UPS REQUIRED

Popeyes - P60 Pylon Sign w/ RB

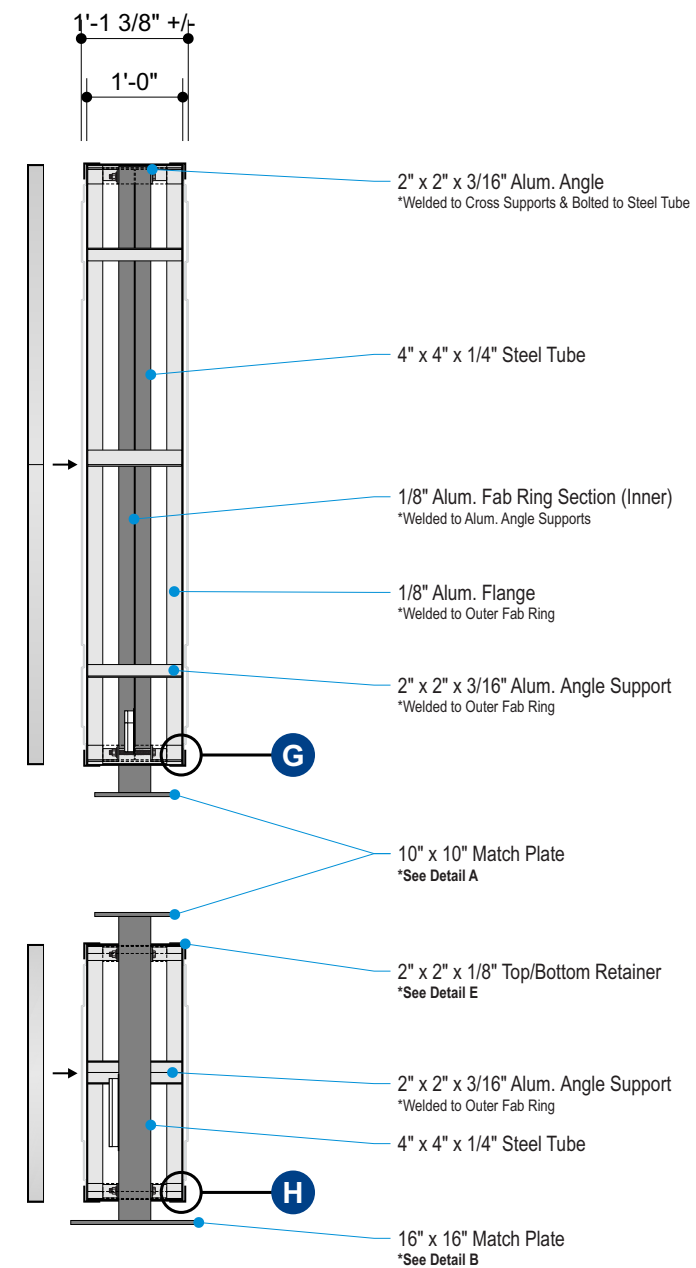
Production Detail - 1 of 2

POP22-P60-6.3, POP22-AP60



Frame Detail - Front

Scale: 1/2"=1'-0"



Frame Detail - Side

Scale: 1/2"=1'-0"



**Electric Sign
Complies with
UL48**

THIS SIGN IS INTENDED TO BE INSTALLED IN ACCORDANCE WITH THE REQUIREMENTS OF **ARTICLE 600 OF THE NATIONAL ELECTRICAL CODE** AND/OR OTHER APPLICABLE LOCAL CODES. THIS INCLUDES PROPER GROUNDING AND BONDING OF THE SIGN.



Copyright © 2023 Allen Industries, Inc.
This is an original, unpublished drawing, created by Allen Industries, Inc. This drawing is submitted to you in confidence for your sole use in connection with the project being planned for you by Allen Industries, Inc. and is not to be shown to anyone outside your organization, nor used, reproduced, copied or exhibited in any fashion whatsoever. The designs shown on the drawing (except for any registered trademarks that may belong to a client of Allen Industries, Inc.) remain the property of Allen Industries, Inc.

Client:
POPEYES

Address:
**3207 S Business Dr,
Sheboygan, WI 53081**

Date: **10/27/23**

Estimate #:
E11507

Job #:
J0007033

Page #: 32 of 38

File Name:

POP-J0007033_Sheboygan, WI_302

Sales:
House

Design:
NM

PM:
TL

#	Date	Description	Initials
1	11/07/23	Justified Engineering 63195-E provided	DAG
2	11/09/23	remove monument, add Pylon	NM
3	-	-	-
4	-	-	-
5	-	-	-
6	-	-	-

Initial DAG

Allen Industries, Inc. requires that an approved drawing be obtained from the client prior to any production release or production release revision.

Client Signature:

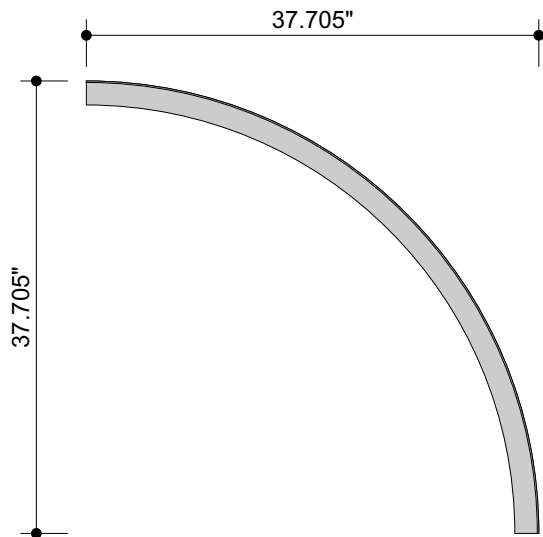
Approval Date:

PICK-UPS REQUIRED

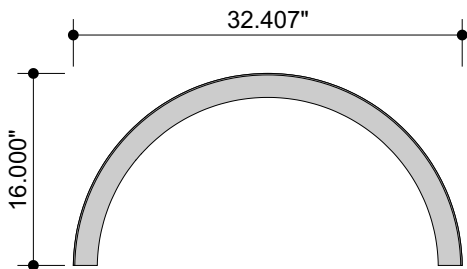
Popeyes - P60 Pylon Sign w/ RB

Production Detail - 2 of 2
POP22-P60-6.3, POP22-AP60

DESIGN INTENT ONLY
Engineering Required to
Determine Actual Production
& Installation Requirements

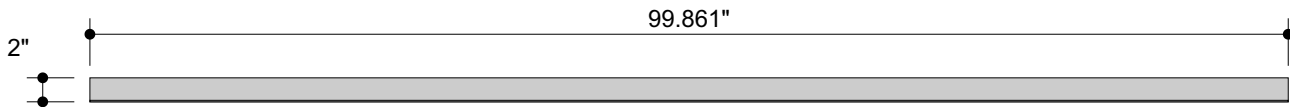


C Poppy Cabinet - Retainer
Scale: 3/4"=1'-0"
Quantity: 8

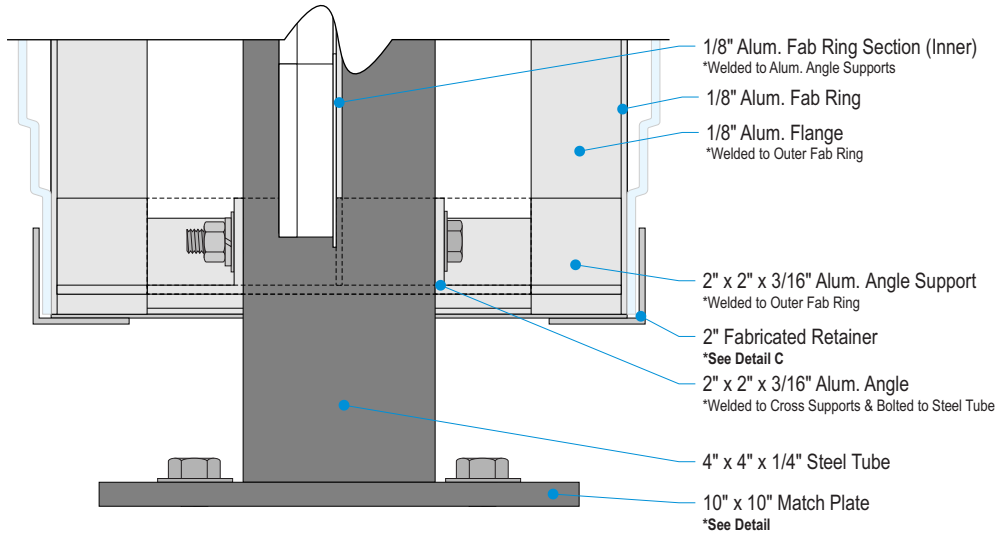


D Capsule End Retainer
Scale: 3/4"=1'-0"
Quantity: 4

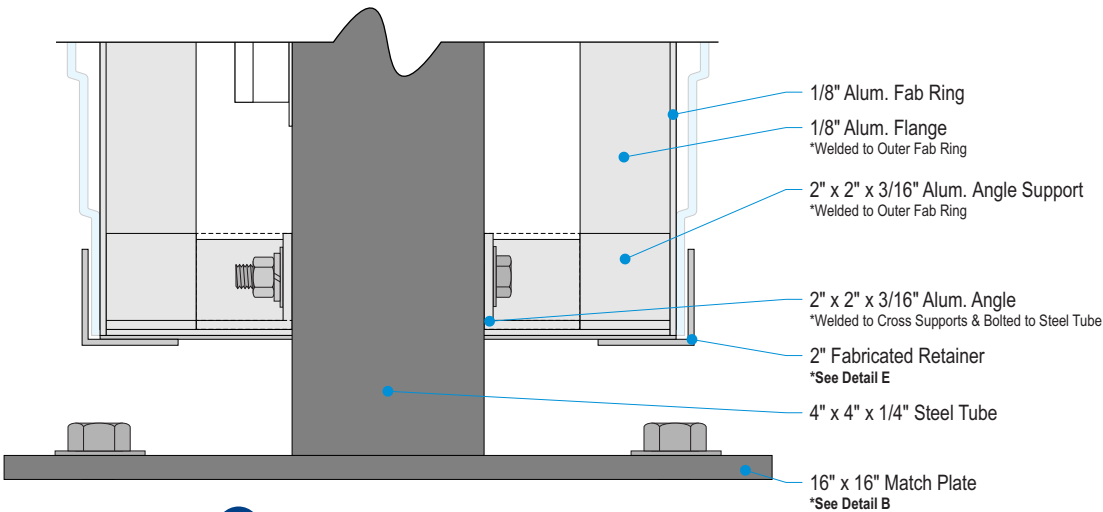
*Exact Retainer Dimensions Based on Drawing,
Production to Adjust as Necessary for Best Fitment
of Actual Cabinet Being Produced



E Capsule Top/Bottom Retainer
Scale: 3/4"=1'-0"
Quantity: 4



G Poppy Cabinet Detail
Scale: 3"=1'-0"



H Capsule Cabinet Detail
Scale: 3"=1'-0"



Electric Sign
Complies with
UL48

THIS SIGN IS INTENDED TO BE INSTALLED IN ACCORDANCE WITH THE
REQUIREMENTS OF ARTICLE 600 OF THE NATIONAL ELECTRICAL CODE
AND/OR OTHER APPLICABLE LOCAL CODES. THIS INCLUDES PROPER
GROUNDING AND BONDING OF THE SIGN.

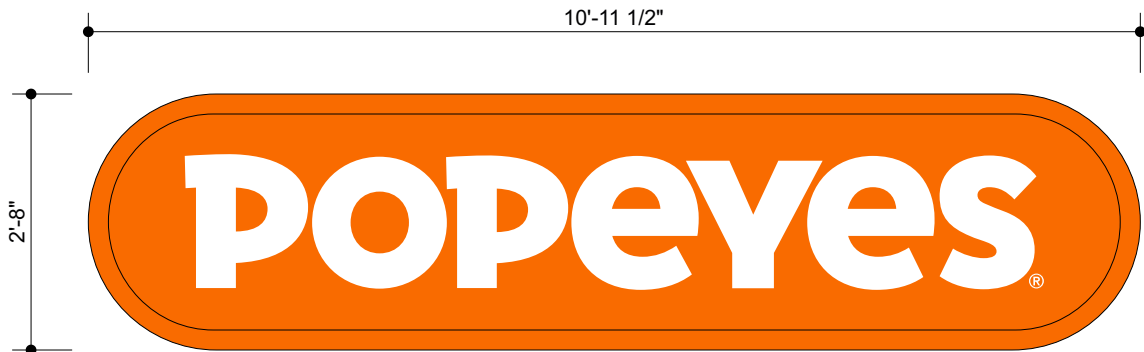


Popeyes - P60 Pylon Sign w/ RB

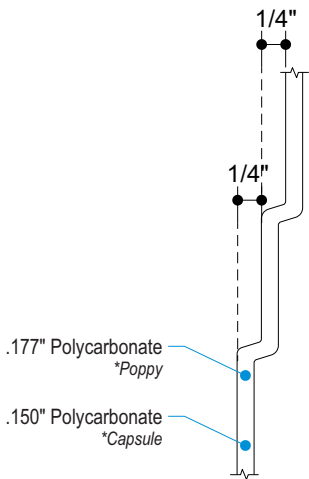
Pylon Cabinet - Face Detail
POP22-P60-6.3, POP22-AP60



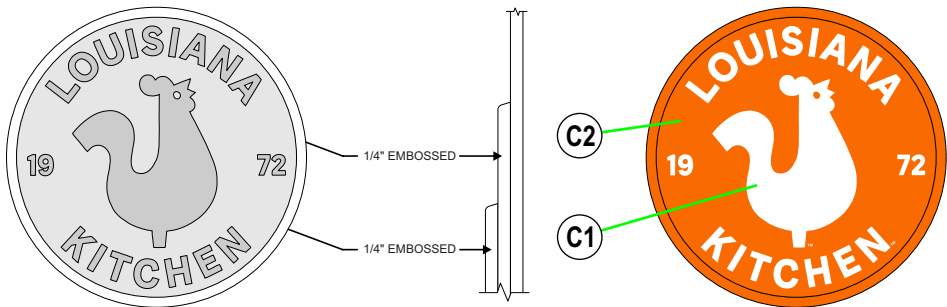
Front View
Scale: 1/2"=1'-0"



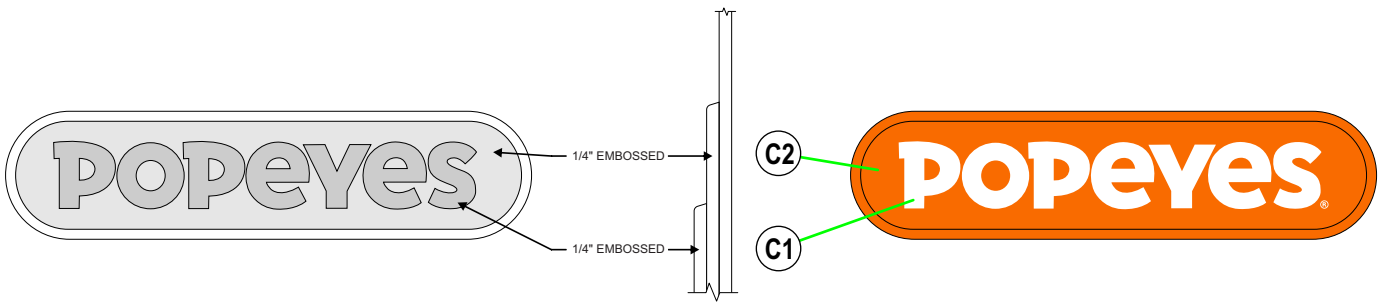
Front View
Scale: 1/2"=1'-0"



Face Embossment Detail
Scale: 6"=1'-0"



DOUBLE DEBOSSED FACE
N.T.S



DOUBLE DEBOSSED FACE
N.T.S

Vinyl Specifications

C1 3M 3630-20 White

Paint Specifications

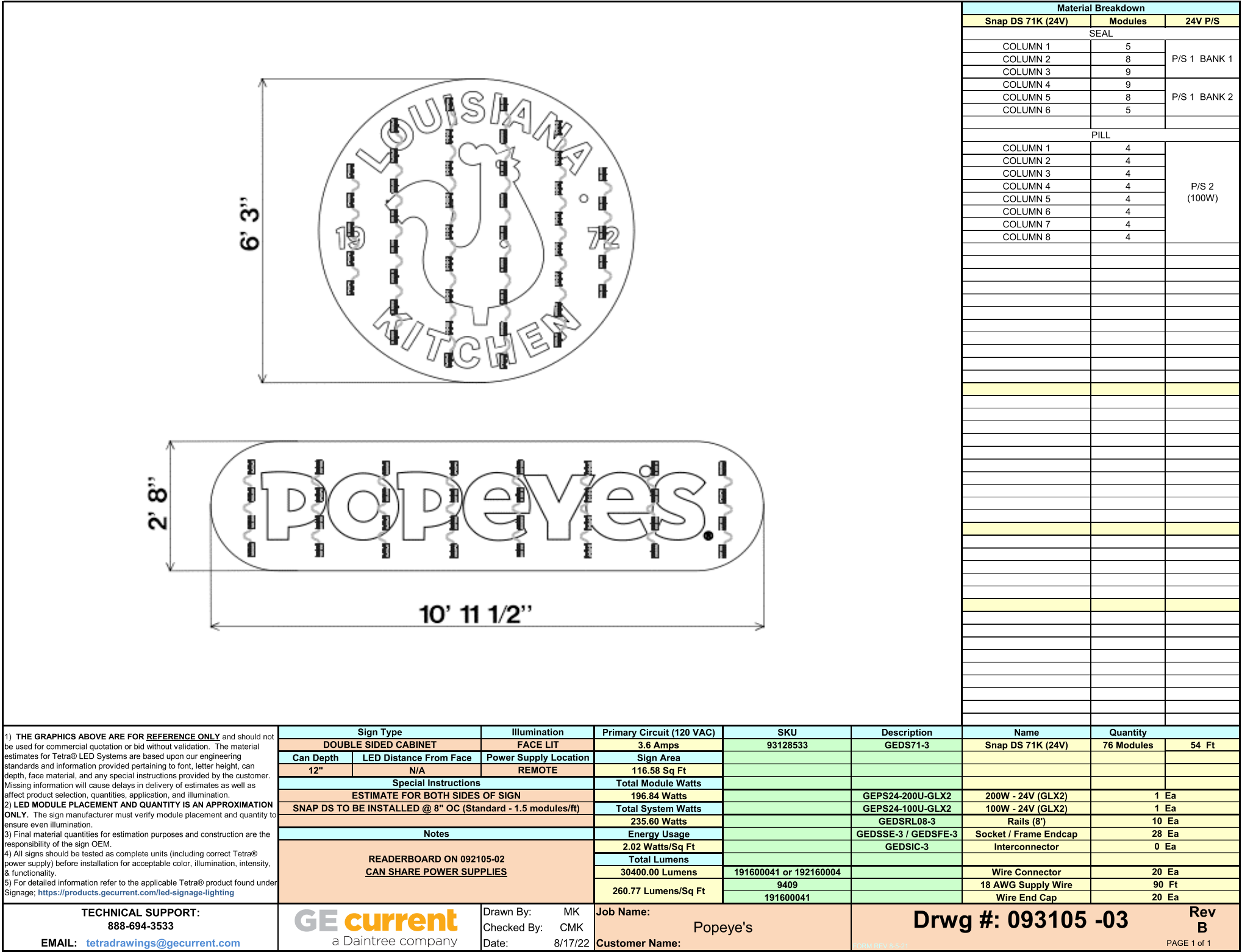
C2 Paint to Match
Pantone 3564C - Orange

All paint finishes to be Satin
unless otherwise specified

Popeyes - P60 Pylon Sign w/ RB

Pylon Cabinet - LED Layout

POP22-P60-6.3, POP22-AP60



PICK-UPS REQUIRED

Popeyes - P30/60 Pylon Sign w/ RB

3'-2" x 6'-1" Reader Board Cabinet
POP22-RB-SF3X6-X2



General Specifications:

Faces:	RB: .150" White Polycarbonate Pan Formed Faces DT: .093" Clear Polycarbonate w/ 3M Vinyl & Diffuser
Cabinets:	Constructed w/ Alum. Angle and .080 Alum. Skin Retainers - 2"
RB:	Set of S/F Cabinets w/ Flat Faces. 4 - Lines of 6" Letters on 7" Panel
Illum:	White LEDs as Required per Manufacturer, Self Contained Power Supplies
Electrical:	Actual Number of Circuits to be Determined by Licensed Electrical Contractor (1) 20 AMP Circuit, 120 Volts - All Wiring Shall be 12 GA
Quantity:	(1) ONE



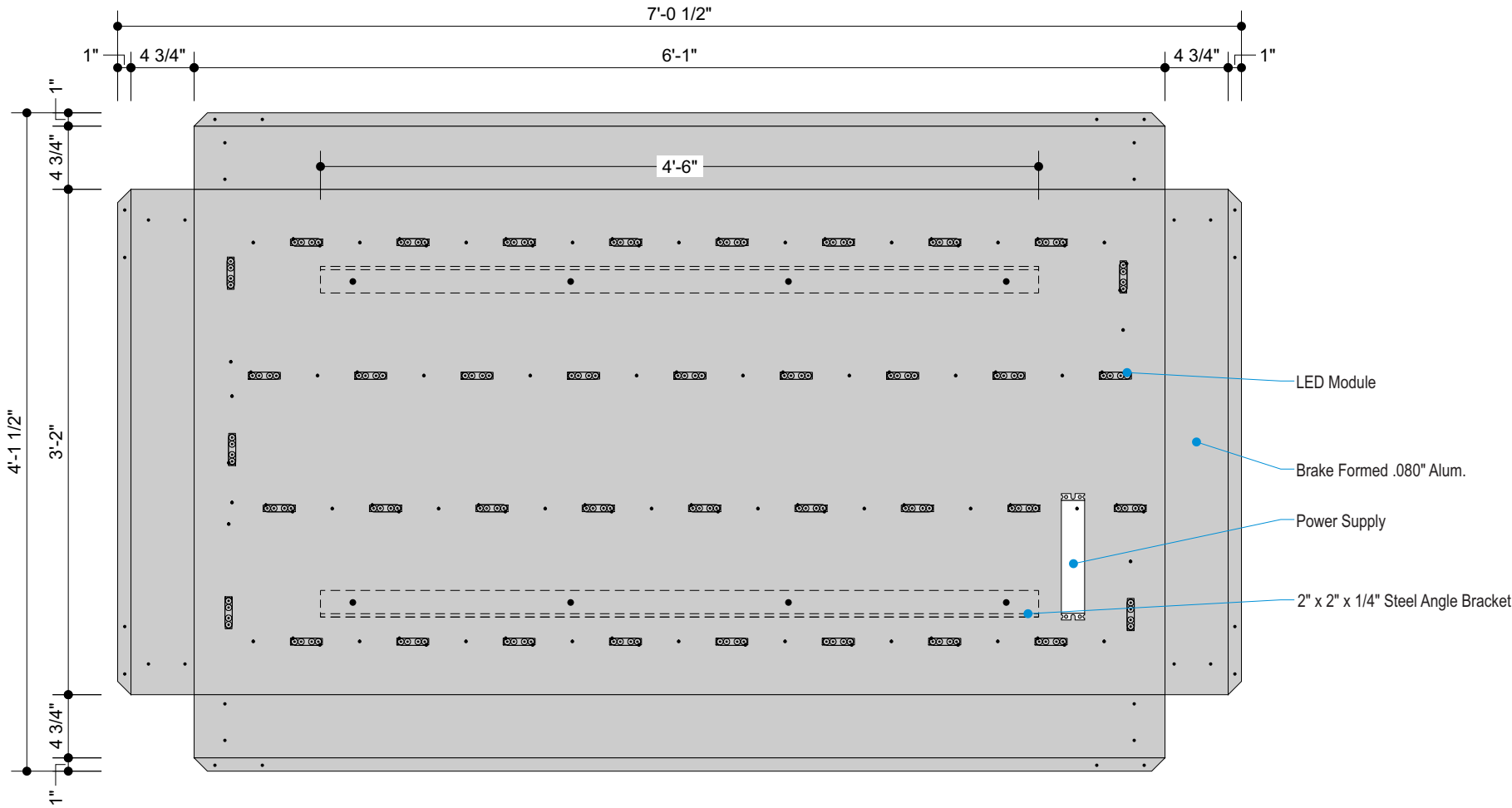
THIS SIGN IS INTENDED TO BE INSTALLED IN ACCORDANCE WITH THE REQUIREMENTS OF ARTICLE 600 OF THE NATIONAL ELECTRICAL CODE AND/OR OTHER APPLICABLE LOCAL CODES. THIS INCLUDES PROPER GROUNDING AND BONDING OF THE SIGN.



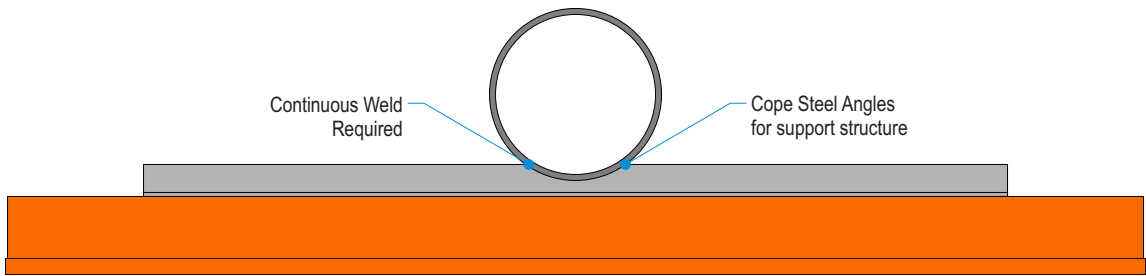
PICK-UPS REQUIRED

Popeyes - P30/60 Pylon Sign w/ RB

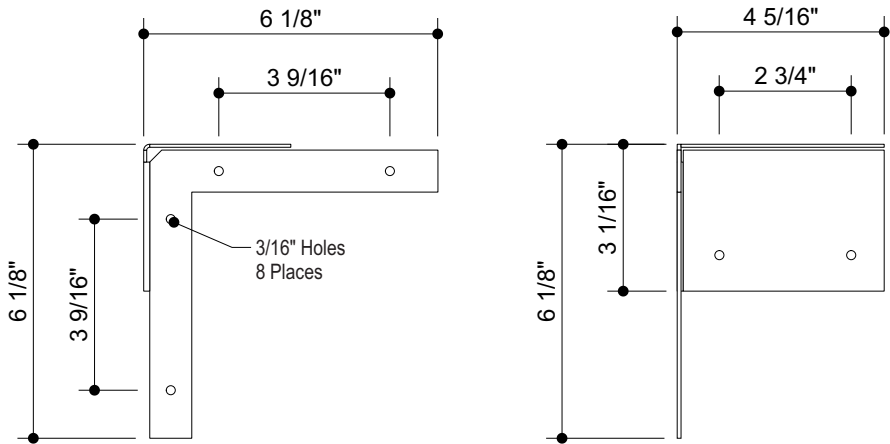
3'-2" x 6'-1" Reader Board - Production Detail
POP22-RB-SF3X6-X2



Flattened View - Cabinet
Scale: 1"=1'-0"



Attachment Detail
Scale: 1"=1'-0"



Corner Bracket
Scale: 3"=1'-0"
Quantity: 4

 FILE NUMBER: E212503

Listed

E212503

Electric Sign
Complies with
UL48

THIS SIGN IS INTENDED TO BE INSTALLED IN ACCORDANCE WITH THE REQUIREMENTS OF ARTICLE 600 OF THE NATIONAL ELECTRICAL CODE AND/OR OTHER APPLICABLE LOCAL CODES. THIS INCLUDES PROPER GROUNDING AND BONDING OF THE SIGN.



#	Date	Description	Initial
1	11/07/23	Justified Engineering 63195-E provided	DAG
2	11/09/23	remove monument, add Pylon	NM
3	-	-	-
4	-	-	-
5	-	-	-
6	-	-	-

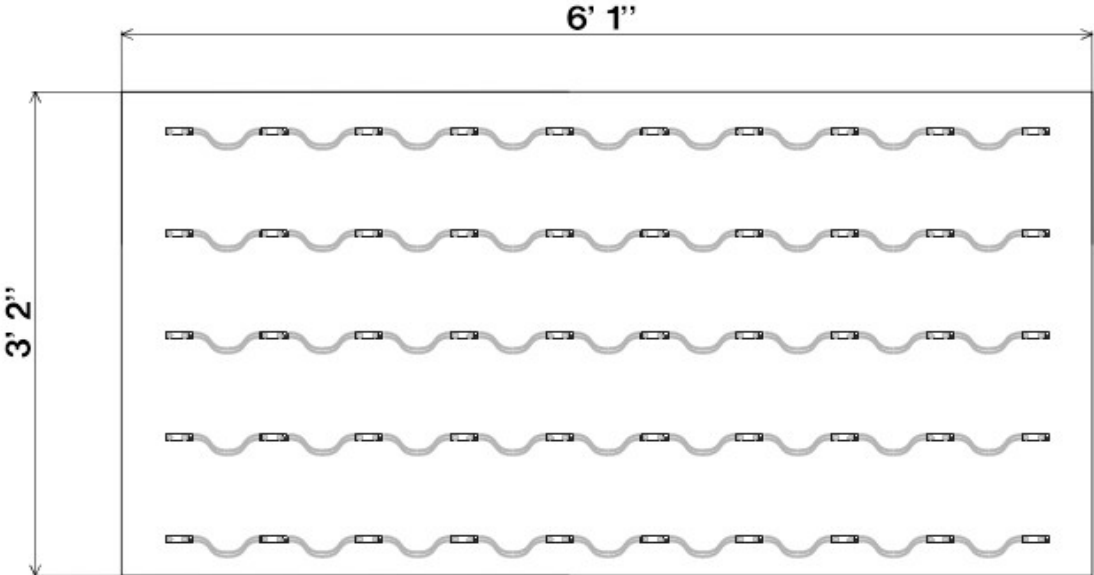
Allen Industries, Inc. requires that an approved drawing be obtained from the client prior to any production release or production release revision.

Client Signature:	Approval Date:
--------------------------	-----------------------


Popeyes - P30/60 Pylon Sign w/ RB

3'-2" x 6'-1" Reader Board - LED Layout

POP22-RB-SF3X6-X2

[illegible]

- 1) **THE GRAPHICS ABOVE ARE FOR REFERENCE ONLY** and should not be used for commercial quotation or bid without validation. The material estimates for Tetra® LED Systems are based upon our engineering standards and information provided pertaining to font, letter height, can depth, face material, and any special instructions provided by the customer. Missing information will cause delays in delivery of estimates as well as affect product selection, quantities, application, and illumination.
- 2) **LED MODULE PLACEMENT AND QUANTITY IS AN APPROXIMATION ONLY.** The sign manufacturer must verify module placement and quantity to ensure even illumination.
- 3) **Final material quantities for estimation purposes and construction are the responsibility of the sign OEM.**
- 4) All signs should be tested as complete units (including correct Tetra® power supply) before installation for acceptable color, illumination, intensity, & functionality.
- 5) For detailed information refer to the applicable Tetra® product found under Signage: <https://products.gccurrent.com/led-signage-lighting>

Sign Type		Illumination	Primary Circuit (120 VAC)	SKU	Description	Name	Quantity	
SINGLE SIDED CABINET		FACE LIT	1.1 Amps	93146573	GELTM2471-1	Tetra LT Medium (7100K)	100 Modules	67 Ft
Can Depth	LED Distance From Face	Power Supply Location	Sign Area					
4.75"	N/A	REMOTE	38.52 Sq Ft					
Special Instructions			Total Module Watts					
ESTIMATE FOR BOTH SIDES OF SIGN			72.00 Watts		GEPS24-100U-GLX2	100W - 24V (GLX2)	1 Ea	
			Total System Watts		-	-		
			85.00 Watts					
Notes			Energy Usage					
			2.21 Watts/Sq Ft					
			Total Lumens					
			11500.00 Lumens	191600041		Wire Connector	42 Ea	
			298.55 Lumens/Sq Ft	9409		18 AWG Supply Wire	70 Ft	
<div>Current</div>		Drawn By: GG	Job Name:	Reader Board	Drwg #: 099608 - 01			Rev -
Checked By: GG	Date: 7/12/23	Customer Name:	PAGE 1 of 1					

Copyright © 2023 Allen Industries, Inc.
This is an original, unpublished drawing, created by Allen Industries, Inc. This drawing is submitted to you in confidence for your use solely in connection with the project being planned for you by Allen Industries, Inc. and is not to be shown to anyone outside your organization, nor used, reproduced, copied or exhibited in any fashion whatsoever. The designs shown on the drawing (except for any registered trademarks that may belong to a client of Allen Industries, Inc.) remain the property of Allen Industries, Inc.

Client: **POPEYES**

Address: **3207 S Business Dr,
Sheboygan, WI 53081**

Date:	Estimate #:	Job #:	Page #:
10/27/23	E11507	J0007033	38 of 38
File Name:			
POP-J0007033_Sheboygan, WI_302			
Sales:	Design:	PM:	
House	NM	TL	

#	Date	Description	Initial
1	11/07/23	Justified Engineering 63195-E provided	DAG
2	11/09/23	remove monument, add Pylon	NM
3	-	-	-
4	-	-	-
5	-	-	-
6	-	-	-

Allen Industries, Inc. requires that an approved drawing be obtained from the client prior to any production release or production release revision.

Client Signature:	Approval Date:
-------------------	----------------