



The City of Sheboygan held a public information meeting to gather residents' input on potential improvements for the public space known as Fountain Park. Approximately 75 people were in attendance and held discussions from 6:00 to roughly 8:00 PM. The meeting consisted of an overview presentation of the process, imaging for potential features and improvements, and three initial bubble diagram concepts for organizing the features within the park. During the presentation, general resident questions and discussion occurred. Residents were then asked to circulate and review the proposed feature images, design concepts, and provide written comments and preferences. Individual question and answer sessions took place during this informal circulation time between residence and planning staff. The following summarizes the input gathered.

#### **Verbal Discussion Items:**

- Desire for better landscaping, but concerns on maintenance
- Electric needs exist and should be provided by renewable sources
- Potential closure of 8<sup>th</sup> street for events
- Ice skating ribbon functionality and relationship to cost
- Where will funding come from → park impact fees
- Parking is an issue
- North side of park activation and connection to Erie Street business owners
- Accessibility issues in existing site
- Fountain Park plans vs waterfront plans – two should work together and not have same elements
- Design should account for maintenance long term

#### **Written Comment Card Responses:**

The following comments are verbatim from written comment cards collected at the meeting.

- Ice skating on actual ice is impractical with our winters. We should not be using refrigeration to create ice. If the market remains it should be more tolerant of the greenery. Market surface should be permeable. Sustainable Sheboygan Task Force is stake holder you missed. Bike infrastructure is essential! All plans should be cognizant of climate change, e.g. carbon neutral, shade. I question whether a stage/amphitheater is still necessary with City Green available. In the last 50 years Sheboygan's average winter temperature has increased 5 degrees. So, winter activities are extremely limited. During the 180-day winter season for the last two years over half of all days the temperature rose above 32 degrees. The closing of a street for usage is a great idea. Perhaps removable bollards are appropriate. Presently on market days the streets are very busy and dangerous for pedestrians and bikers. – Jim Van Akkever
- Finding a way to convert road space into shaded/shelter space would be huge!! Clean, accessible drinking water bottle fill access. Sheltered bike parking, more people can be accommodated with bike parking than car. For any hard surfaces concrete alternatives are appreciated (brick, permeable etc.). – Alex Vanden Heuvel
- Like a fountain in the center or N.E. corner. Like support building with restrooms central, away from edge of park. Want minimal hardscaping. More trees – more have been removed recently than replaced. Don't like closing of 8<sup>th</sup> street and putting food trucks

there. Keep improvements minimal with upfront and maintenance costs in mind. – Unknown

- Shade over hardscape is very, very important on hot days. Hardscape gives off a lot of heat. Seating areas need to be totally accessible. Please work with local art for play features. It needs to feel like Sheboygan. – Betty Kamikawa
- Please respect the vintage character of our downtown. We need attractions and amenities but not Disneyland in our central square. – Bill Burton
- This consulting group should present an upgrade plan for several parks and not just one. Too much to fit into just fountain park when there are more needing attention. Listen to and work with the existing significant users, farmers market, rotary etc. The non-traditional play areas exist in other nearby areas. Developing other areas for food truck / skating elsewhere. – Mark Steffen
- I think the triangle pattern was the better layout plan. I still like the bandshell where it sits because it utilizes the hill for added seating. I just wish the city would utilize it more as past mayors did. Only one fountain for the park. Don't over clutter the park. – Jack Meier
- Is there a way to incorporate the north side of the park more? It's the most visible when people come into town and there are lots of local shops and stores there. - Matt S.
- Thank you for all your awesome ideas! I would like to see better landscaping of the park. In the past we had trees, bushes and flowers and grass. Now we mostly have trees and grass. The area looks barren and uninviting to me. I understand upkeep can be a challenge, but I hope we can include some flowers and bushes into the park. – Elaine Jacks
- I am more interested in appearance than use. I fear having this small park, with its significant heritage (our first park) looking like an outside mall, filled with cheesy stuff. I want it to remain well landscaped and retain a park look (while serving some not all needs). I do believe the appearance of the park today is not attractive. It is a hodge-podge of disconnected features. This is an opportunity to create a unified attractive place. – Eleanor Jung \*a resident for almost 70 years
- Great concepts – worried about a prolonged closing of 8<sup>th</sup> street. – Edward Procet
- Ask kids, families and neighbors what they want and would use at the park. Not sure how to get them together to ask – maybe a kid's day at the park event? – Betty Kamikawa
- The fountain needs brickwork repaired. The Spanish-American memorial needs an improved setting / location. – Frank Koczan
- Its called 'Fountain Park' Fix the fountain! Keep the 'Pat Matzdorf' world record pole. The park is used even if no one is in it. It doesn't have to have a constant crowd. If people including to speak, they need a mike! No playground – swings etc. It's an adult park. - Unknown

### Image Preferences:

Image boards were prepared showing a variety of examples and a range of design styles related to the proposed features and improvements. Attendees had an opportunity to view all the images and then placed stickers next to the image they preferred. Parkitecture staff were present to answer any questions related to the imaging. Total stickers next to each image are as follows:

### Feature - Flexible Space:

- Beer Garden / Social Space = 9
- Social Space = 8
- Pedestrian Promenade = 8

- Beer Garden / Vendor Space = 8
- Central Great Lawn = 6
- Food Truck Access = 3
- Yoga, Zumba etc. = 1
- Yard Games = 0
- Central Hardscape Plaza = 0

Market Space Feature:

- Street Closure Area = 13
- Integrated Shaded Market Seating = 7
- Covered Market Area = 4
- Semi-enclosed Space = 3
- Covered Market Structure and Hardscape Areas = 3
- Turf Surfacing (ex-condition) = 3
- Crushed Gravel Surfacing = 1
- Extra-wide Hardscape Surface = 1
- All Turf Surfacing = 0

New Fountain Feature:

- Original Fountain / Forsyth Park Fountain (Similar) = 29
- Artistic = 2
- Water Curtain = 2
- Wave Fountain = 2
- Water Boat = 1
- Water Sculpture = 1
- Floating Rock = 0
- Cloudscape = 0
- Bow Wave Fountain = 0

Interactive Water Feature:

- Spray Jet Water Tunnell = 13
- Water Pavilion = 5
- Fog Play = 5
- Water Runnel = 2
- Dry Deck Walkable Fountain = 2
- Splash Pad = 0
- Water Playground = 0
- Lake Union Spraypark = 0
- Water Table = 0

Support Building Feature:

- Market/Linear Shade Structure = 14
- Building with Patio Extension (2 images) = 12
- Building with Interior Vendor Space = 7
- Combined Restroom and Interior Space = 7
- Building with Open Concept = 5
- Building with Support Shade Element = 4
- Building Fronting on Street = 0

### Lighting Feature

- Catenary Lighting = 14
- Integrated Water and Light – Linear = 12
- Light as Art = 10
- Tree and Feature Perimeter Lighting = 6
- Light and Water (building in background image) = 5
- Light and Water (red, white and blue) = 3
- Light and Water (child playing image) = 2
- Light Rooms = 2
- Light and Water (splash pad image) = 1
- Wall seating Lighting = 0

### Furnishings Features:

- Landscape Form Seating (benches) = 10
- Landscape Form Seating (large rocks) = 7
- Sunken Seating Rooms = 6
- Bench Swing Structures = 5
- Hammock Garden = 4
- Art Form Seating (circular) = 3
- Artistic Shade Structure = 3
- Art Form Seating (wavy) = 1
- Adirondack Seating = 0
- Fitness Equipment = 0

### Non-Traditional Play Features:

- Sculpture Garden = 8
- Organic Form Play (tower with hanging pads) = 3
- Playable Art (large Sphere) = 3
- Organic Form Play (tower) = 3
- Playable Art (pinecone) = 2
- Natural Material Play (vertical playground elements) = 2
- Playable Art (sphere) = 1
- Playable Art (elevated boardwalk) = 1
- Organic Form Play (blue climbers) = 1
- Organic Form Play (orb) = 1
- Natural Play Materials (horizontal elements) = 1
- Non-Traditional Play = 1

### Ice Skating Ribbon Feature:

- Two Rivers Central Park = 14
- Outdoor Fire Pit = 10
- Maple Grove MN = 4
- Titledown District = 4
- Bountiful Town Square = 2
- Seating = 2
- Central Park Washington DC = 0

**Concept Preferences:**

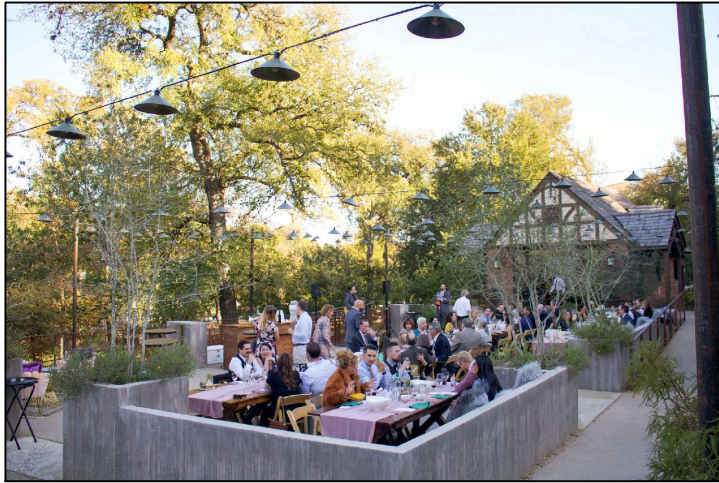
Concept bubble diagrams were prepared showing three potential plans for organizing the features and improvements within Fountain Park. Attendees had an opportunity to view the diagrams and then placed stickers next to the one they preferred. Parkitecture staff were present to answer any questions related to the imaging. Total stickers next to each concept are as follows:

Ring Concept = 20

Triangle Concept = 5

Tee Concept = 4

# Plan Features - Flexible Space



Social Space



Pedestrian Promenade



Beer Garden/Vendor Space



Food Truck Access



Beer Garden/Social Space



Yard Games



Central Great Lawn



Central Hardscape Plaza



Yoga, Zumba, etc

# Plan Features - Market Space



Semi-enclosed Space



Covered Market Area



Crushed Gravel Surfacing



Covered Market Structure and Hardscape Areas



Turf Surfacing (ex condition)



Street Closure Market Area



Turf Surfacing (existing condition)



Extra-wide Hardscape Surface



Integrated Shaded Market Seating



All Turf Surfacing

File: V:\24.010\_Sheboygan\_Fountain\_Park\CAD\LW.dwg Layout: Market User: Blake Plotted: Jul 08, 2024 - 2:14pm

Revisions:

Project #: 24.010  
Issued For: Review  
Date: 07/10/2024

Sheet Number

**IM 1**

# Plan Features - New Fountain



Water Boat Fountain - Valencia, Spain



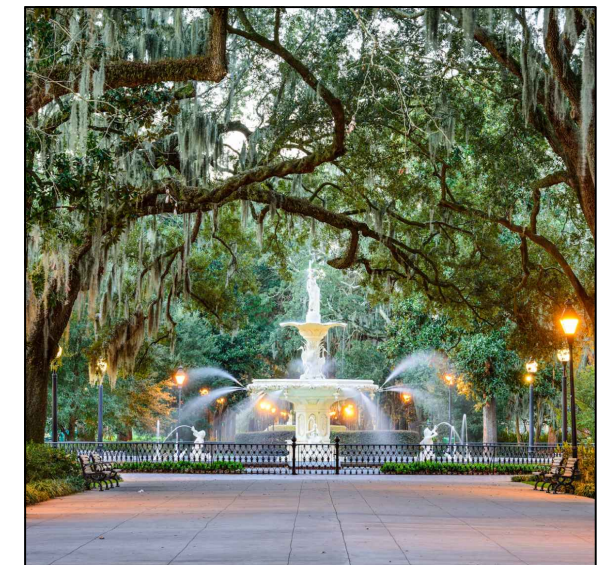
Water Sculpture - Joure, Netherlands



Bow Wave Fountain - San Diego, CA



Original Fountain Park Fountain



Forsyth Park Fountain - Savannah, GA



Floating Rock - Cancun, Mexico



Cloudscape - Austin, Texas



Water Curtain - South Korea



Wave Fountain - Burgos, Spain

Revisions:

Project #: 24.010  
Issued For: Review  
Date: 07/10/2024

Sheet Number

**IM 8**



# Plan Features - Interactive Water Feature



Water Table - Memorial Union, Madison



Fog Play - Water Distributing Park, Chengdu, China



Splash Pad - Nanjing, China



Dry Deck Walkable Fountain - Spain



Water Pavilion - Aalborg, Denmark



Water Runnel - Bountiful, Utah



Lake Union Spraypark - Seattle, WA



Water Playground - Smale Park, Cincinnati



Spray Jet Water Tunnel - Toronto

# Plan Features - Support Building



Combined Restrooms and Interior Space



Market/Linear Shade Structure



Building with Open Concept



Building with Support Shade Element



Building with Patio Extension



Building with Interior Vendor Space



Building Fronting on Street



Building with Patio Extension

Revisions:

Project #: 24.010  
Issued For: Review  
Date: 07/10/2024

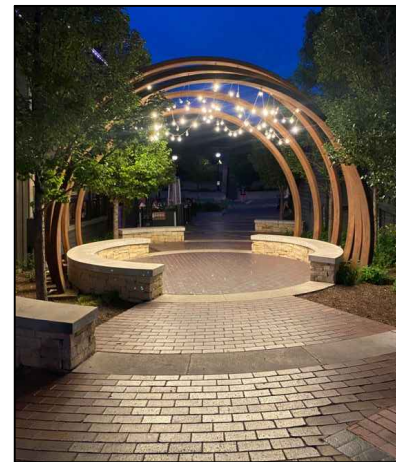
Sheet Number

**IM 6**

# Plan Features - Lighting



Light and Water



Light "Rooms"



Light as Art



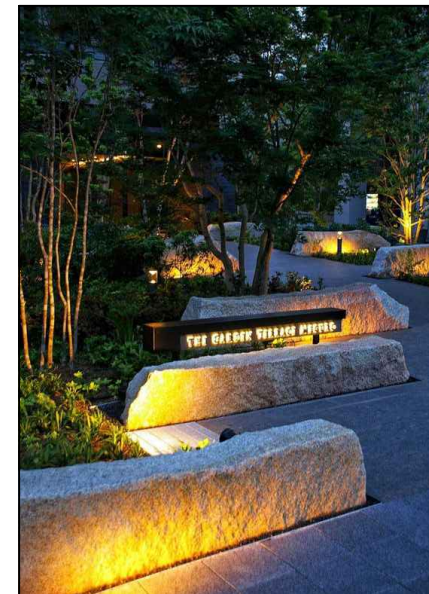
Light and Water



Tree and Feature Perimeter Lighting



Light and Water



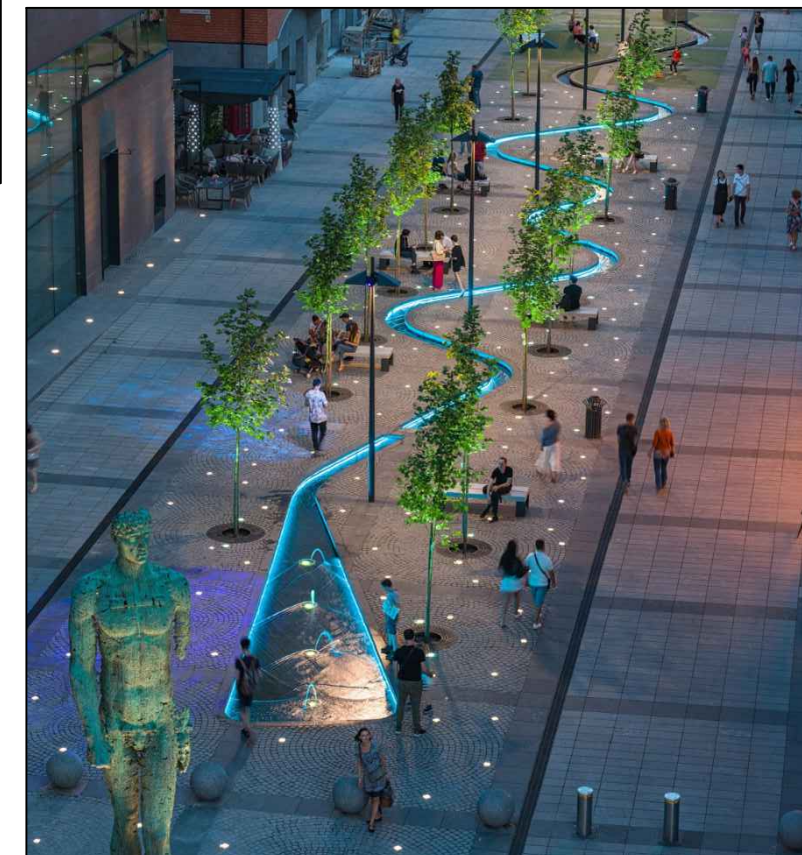
Wall Seating Lighting



Light and Water



Catenary Lighting



Integrated Water and Light - Linear

# Plan Features - Furnishings



Art Form Seating



Art Form Seating



Adirondack Seating



Landscape Form Seating



Artistic Shade Structure



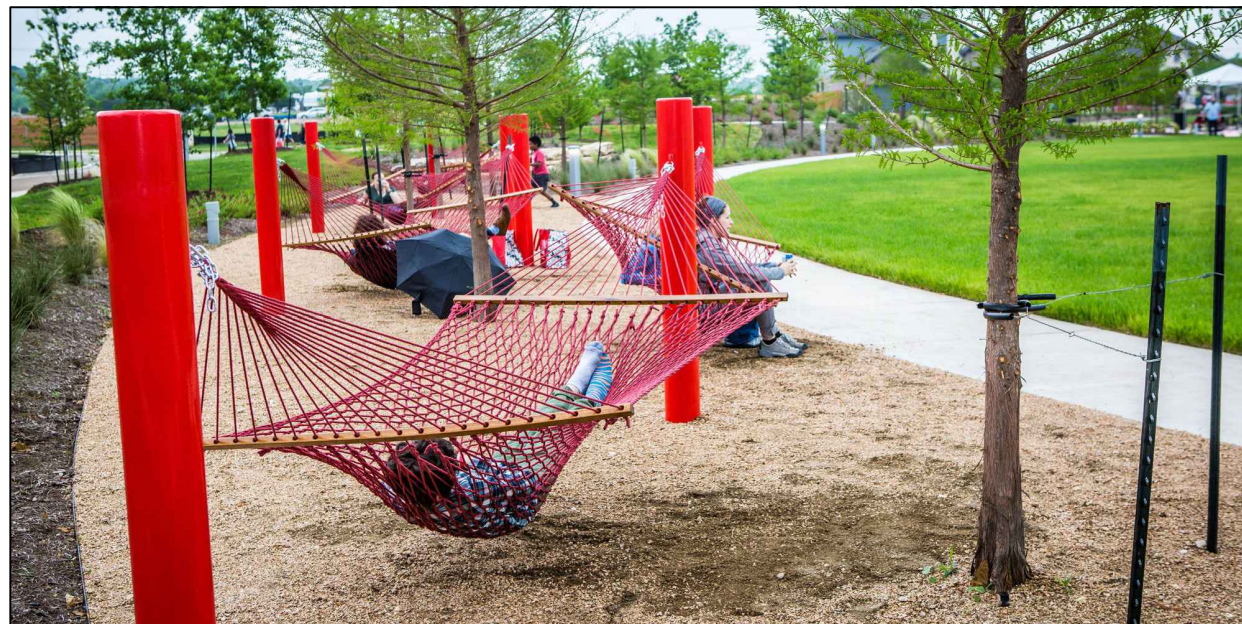
Landscape Form Seating



Sunken Seating "Rooms"



Bench Swing Structure



Hammock Garden



Fitness Equipment

Revisions:

Project #: 24.010  
Issued For: Review  
Date: 07/10/2024

Sheet Number

**IM 4**

# Plan Features - Non-Traditional Play



Playable Art



Sculpture Garden



Organic Form Play



Playable Art



Organic Form Play



Natural Material Play



Non-Traditional Play



Natural Material Play



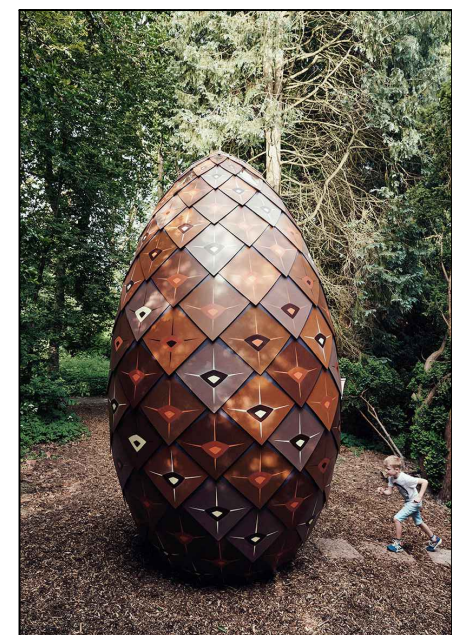
Playable Art



Organic Form Play



Organic Form Play



Playable Art

File: V:\24.010 Sheboygan Fountain Park\CAD\LIV.dwg Layout: Play User: Blake Plotted: Jul 08, 2024 - 2:15pm

Revisions:

Project #: 24.010  
Issued For: Review  
Date: 07/10/2024

Sheet Number

**IM 5**

# Plan Features - Ice Skating Ribbon



Bountiful Town Square - Utah



Central Park - Two Rivers



Outdoor Fire Pit



Central Park - Washington DC



Title Town District - Green Bay

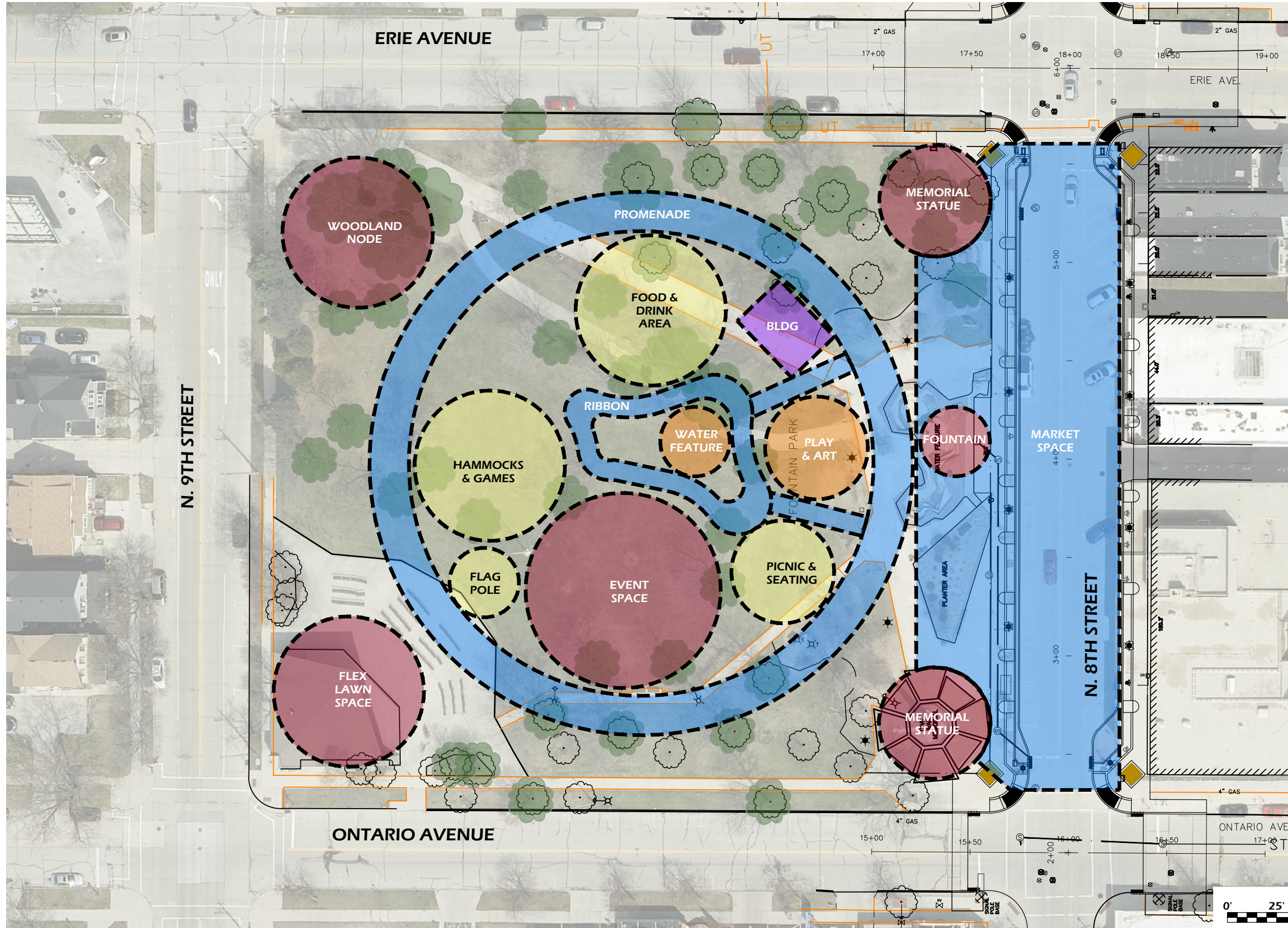


Seating



Maple Grove Central Park - Maple Grove, MN

# Bubble Concept - Ring



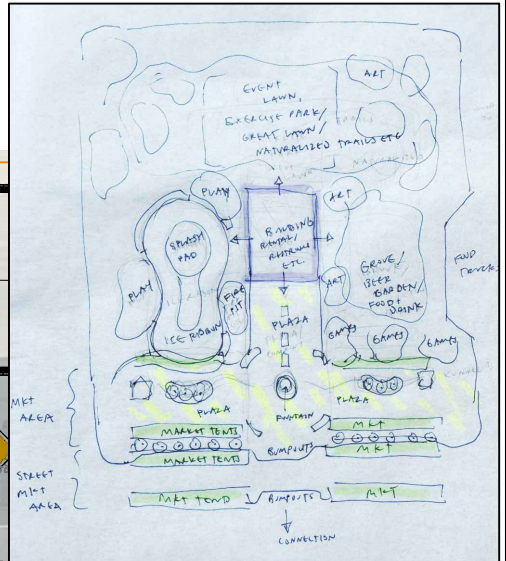
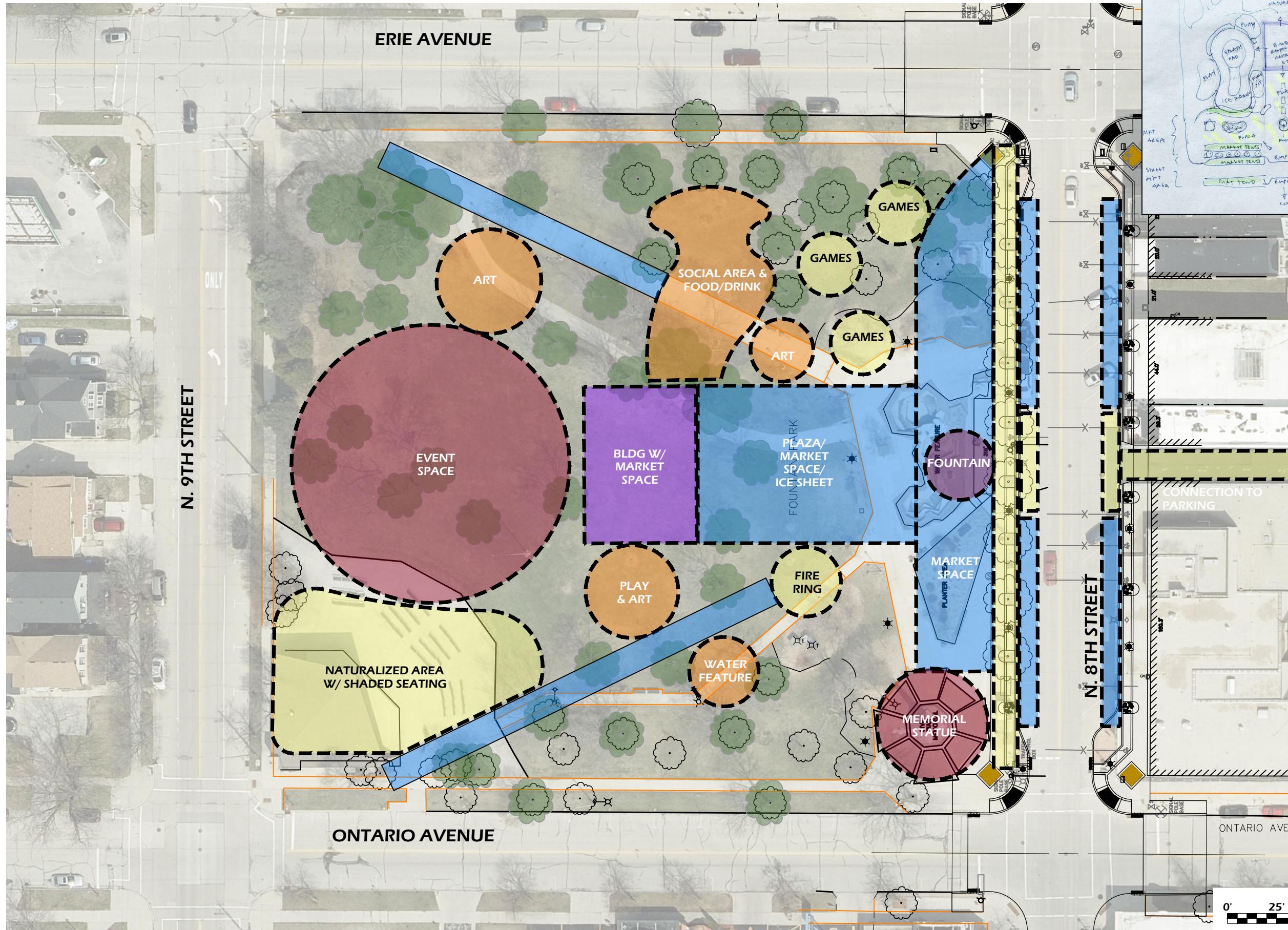
File: V:\24.010 Sheboygan Fountain Park\CAD\LW.dwg Layout: RING User: Blake Plotted: Jul 08, 2024 - 6:38pm

Revisions:

Project #: 24.010  
Issued For: Review  
Date: 07/10/2024

Sheet Number

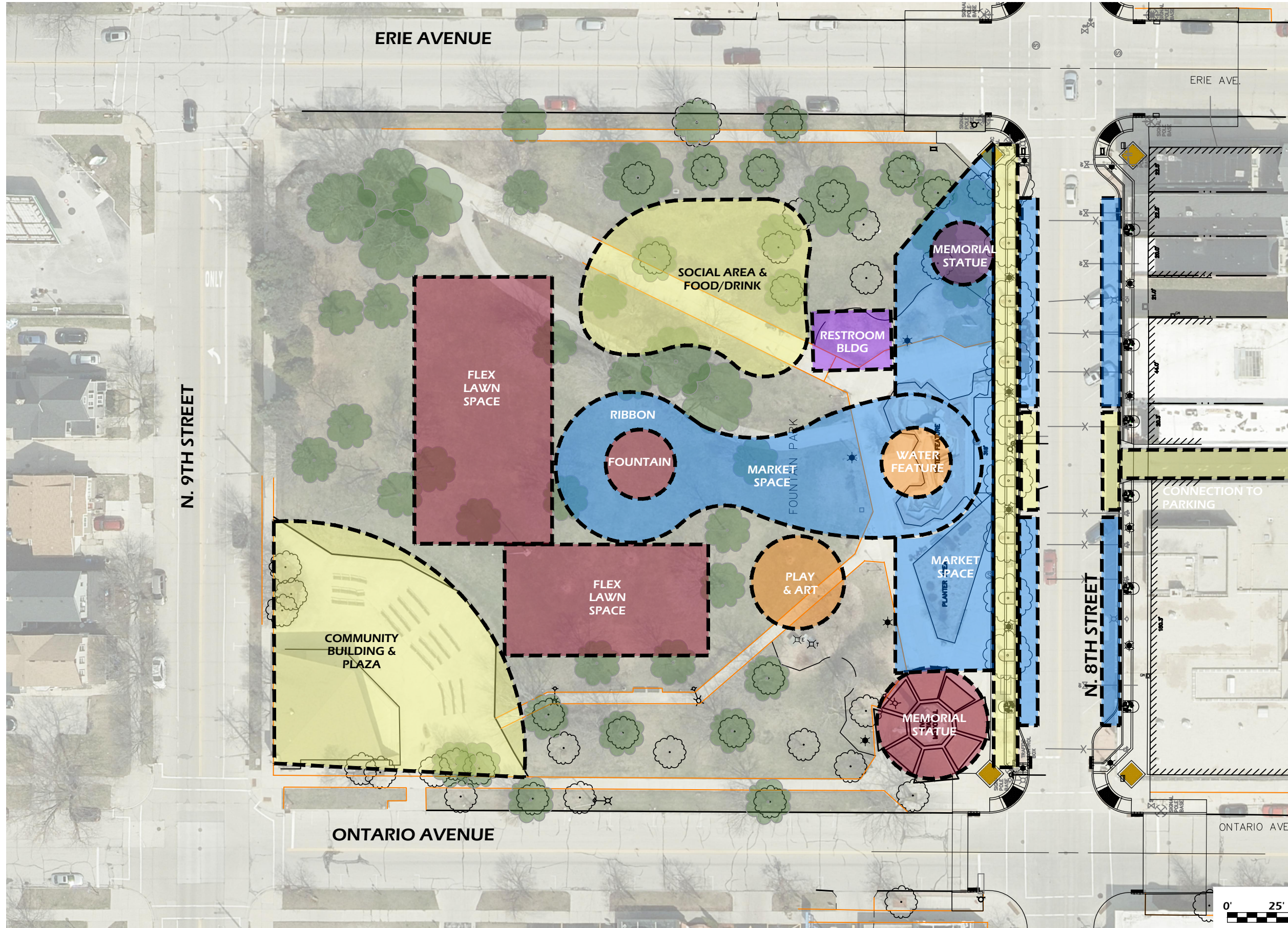
# Bubble Concept - Triangle



File: V:\24.010 Sheboygan Fountain Park\CAD\LW.dwg Layout: TRIANGLE User: Blake Plotted: Jul 08, 2024 - 7:30pm



# Bubble Concept - Tee



File: P:\24.010 Sheboygan Fountain Park\CAD\LW.dwg Layout: TEE User: Blake Treisen Plotted: Jul 08, 2024 - 11:22pm

Revisions:

Project #: 24.010  
Issued For: Review  
Date: 07/10/2024

Sheet Number