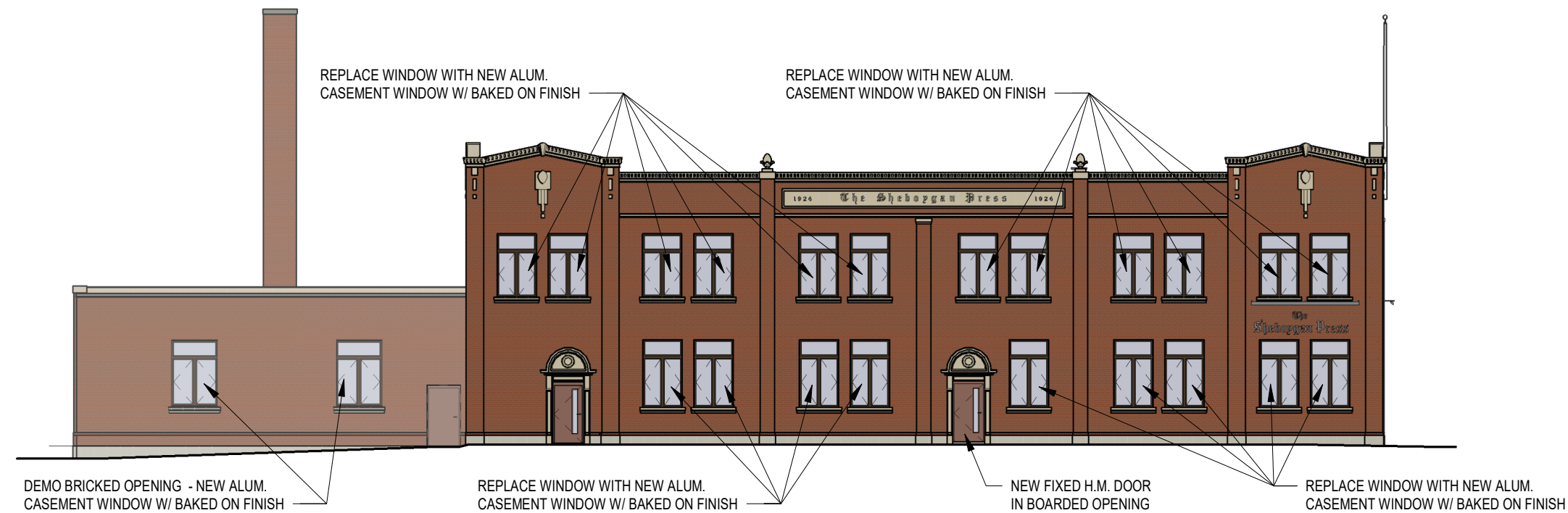


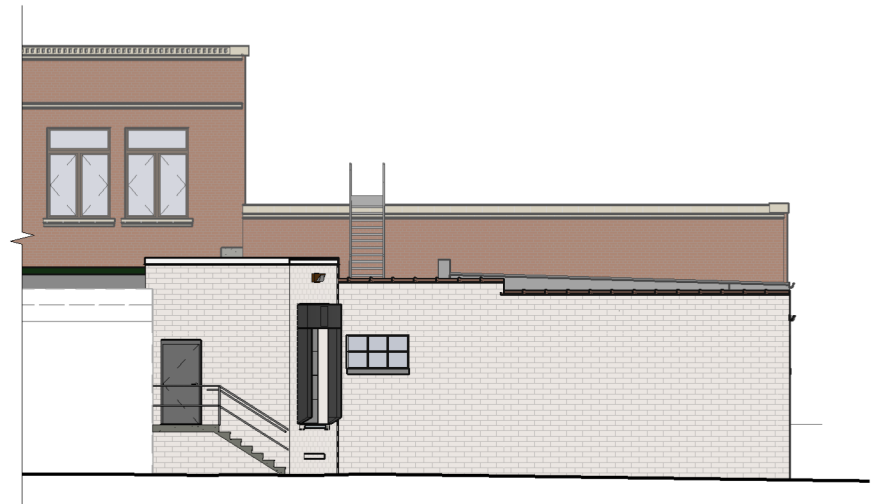
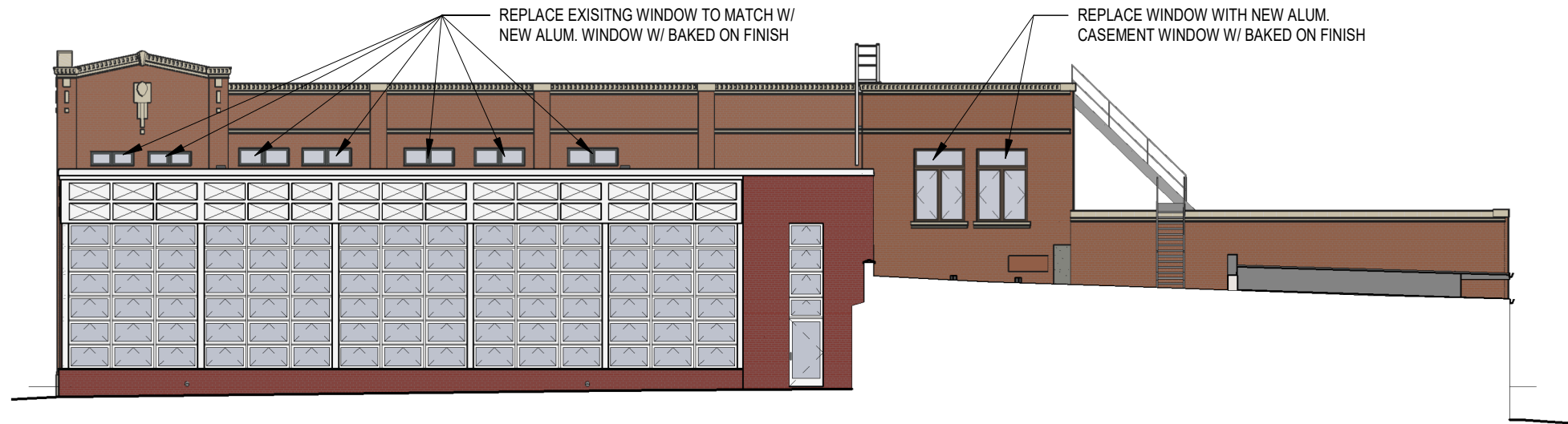
2 SOUTH ELEVATION - Colored

A200 1/16" = 1'-0"



1 WEST ELEVATION - Colored

A200 1/16" = 1'-0"

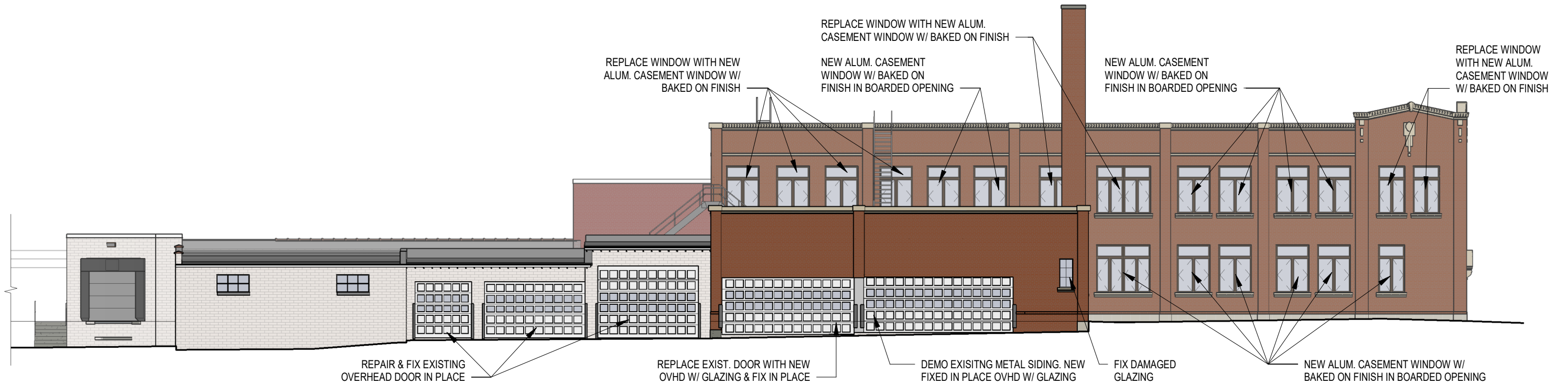


3 EAST ELEVATION - Colored

A201 1/16" = 1'-0"

2 EAST ELEVATION (REAR) - Colored

A201 1/16" = 1'-0"



1 NORTH ELEVATION - Colored

A201 1/16" = 1'-0"