

© ALL DRAWINGS AND WRITTEN MATERIAL CONTAINED HEREIN ARE THE PROPERTY OF THE LINGLE DESIGN GROUP, INC. THEY MAY NOT BE REVISED, COPIED, REUSED OR REPRODUCED IN ANY MANNER WITHOUT WRITTEN AUTHORIZATION FROM THE ARCHITECT.

**PRELIMINARY
NOT FOR CONSTRUCTION**

STATE ID: 481099 PROJECT #: 26-080
 NATIONAL #: 45569 DRAWN BY: RP
 CHECKED BY: JK

DATE: 04/15/26 - P&Z REVIEW SET - 001

REVISIONS

NO.	DATE	DESCRIPTION
△		
△		
△		
△		
△		

CLIENT
**McDonald's
USA, LLC**

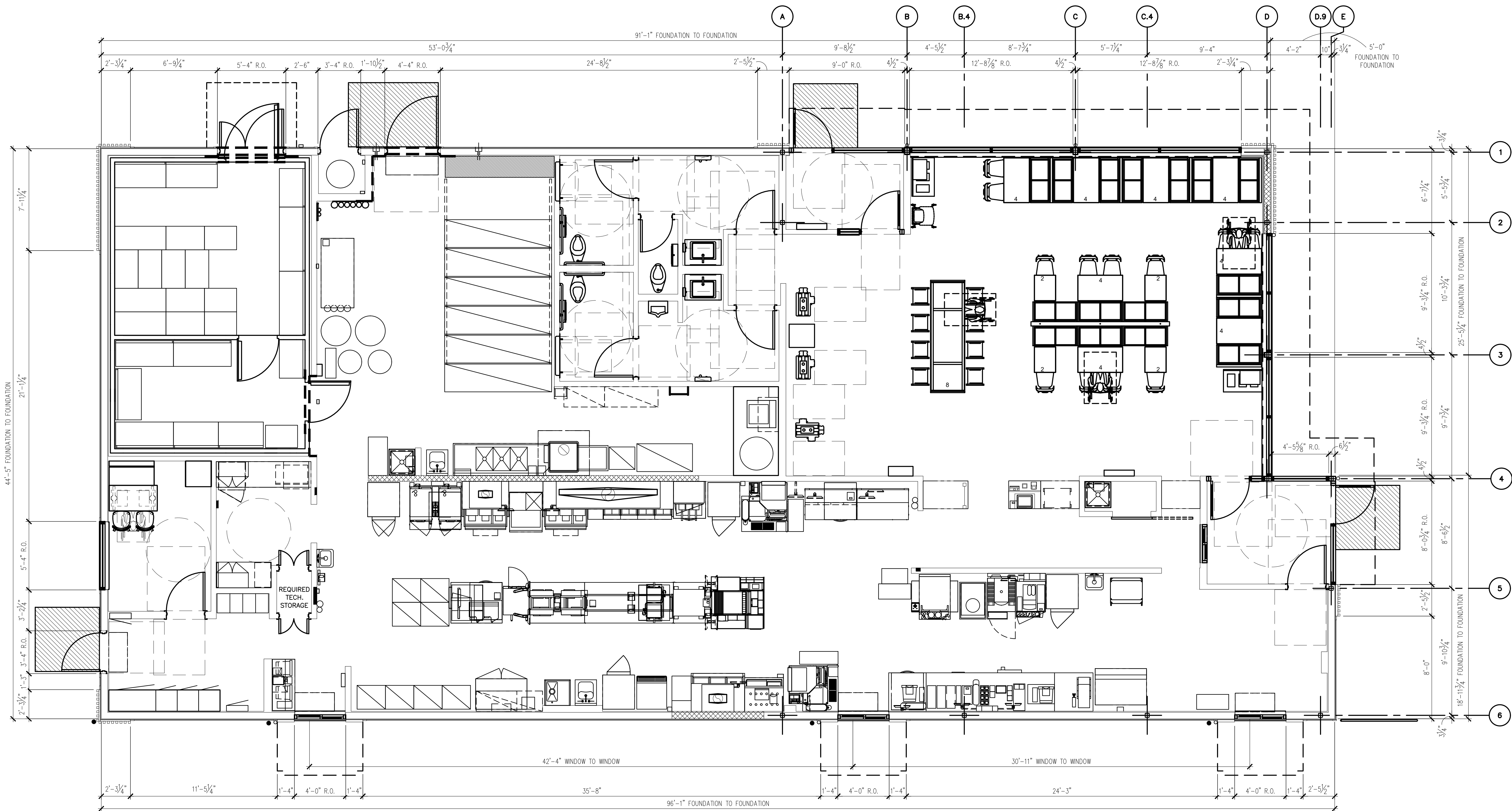
PROTOTYPE
 BB20 4590 WW-HB
 ISSUE DATE 02/26

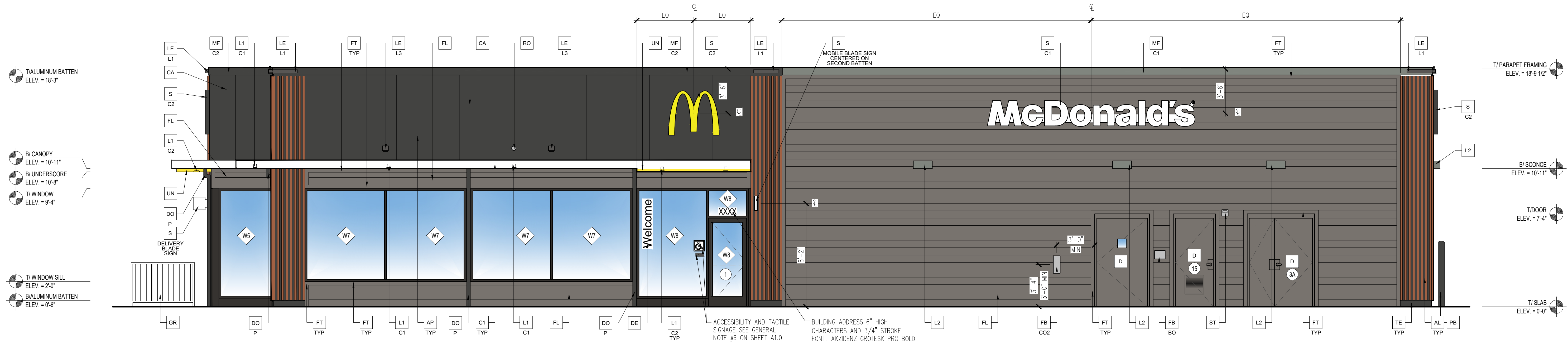
ADDRESS
 1221 ERIE AVENUE
 SHEBOYGAN, WI 53081

SHEET TITLE
**PROPOSED
FLOOR
PLAN**

SHEET NUMBER:

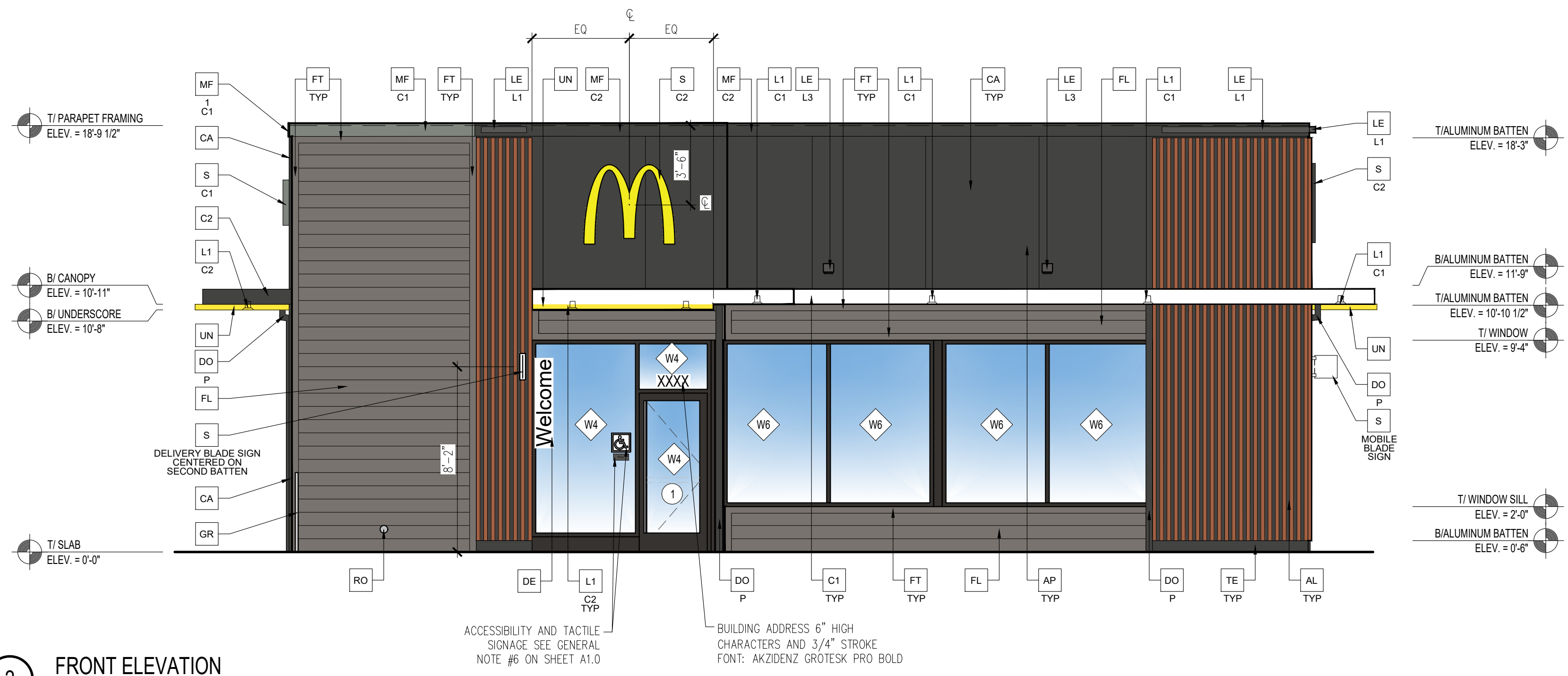
A1.0





1 NON DRIVE-THRU ELEVATION

Scale: 1/4"=1'-0"



2 FRONT ELEVATION

Scale: 1/4"=1'-0"

SIGNAGE	
FRONT	= 14 SF < 45 SF
NON-DT SIDE	= 47 SF < 90 SF
REAR	= 14 SF < 45 SF
DT SIDE	= 0 SF < 90 SF
TOTAL	= 75 SF

ELEVATION KEY NOTES:			
COLOR SCHEME: 'STEEL' SCHEME			
<p>AL ALUMINUM BATTEN SYSTEM SIZE: 2"x2" PROFILE COLOR: WOOD GRAIN, BACKRAIL UNFINISHED, ENDCAP PAINTED TO MATCH SUBSTRATE: 1/2" EXTERIOR HIGH DENSITY OVERLAY (HDO) PLYWOOD, BB, GROUP 1, HDO BOTH FACES, APA TRADEMARKED. COURSE GRIT SAND SURFACES PRIOR TO PRIMING, PRIME AND PAINT BOTH SIDES AND ALL EDGES PRIOR TO INSTALLATION. SUBSTRATE COLOR: "IRON ORE" SW 7069 BY SHERWIN WILLIAMS</p> <p>C1 ALUMINUM CANOPY SYSTEM COLOR: WHITE</p> <p>C2 ALUMINUM CANOPY SYSTEM COLOR: RAL 7022</p> <p>CA CITADEL ACM WALL PANELS COLOR: UMBRA GRAY</p>	<p>D HOLLOW METAL DOOR PAINT: GAUNTLET GRAY SW 7019 BY SHERWIN WILLIAMS</p> <p>DE DECAL BY GRAPHICS SUPPLIER SURFACE APPLIED, FIELD INSTALLED, PRE CUT, PRE SPACED. SUPPLIERS: VOMEIA (865) 330-7337, ann.bowen@vomeia.com GEX INTERNATIONAL (847) 543-4600, mcdonaldsdecor@gxi.com</p> <p>DO DOWNSPOUT - 3" DOWNSPOUT BY CANOPY SYSTEM MANUFACTURER - COORDINATE WITH CIVIL TO TIE INTO STORM DRAIN - COLOR: RAL 7022 TYPE/LOCATION: DT = AT DRIVE THRU LOCATIONS, DOWNSPOUTS CAN OUTLET DIRECTLY TO PAVEMENT IN DRIVE THRU LANE. P = AT PEDESTRIAN LOCATIONS, APPROVED CONNECTION OPTIONS ARE: DRAIN TO LANDSCAPE OR AREA DRAIN.</p> <p>FB FILL BOX # - TYPE: CO2 = BULK CO2 (EQPM SCHEDULE ITEM 49.00) BO = BULK OIL (EQPM SCHEDULE ITEM 700.18)</p> <p>FL FIBER CEMENT LAP SIDING: SMOOTH HARDI-BOARD PLANK BY JAMES HARDIE, 8-1/4" WIDTH, 7" EXPOSURE, HZ5 PAINT: "GAUNTLET GREY" SW7019 BY SHERWIN WILLIAMS</p>	<p>FT FIBER CEMENT TRIM: HARDIE TRIM BOARDS 4/4 SMOOTH, 3 1/2" WIDTH, 3/4" THICK, HZ5 PAINT: "GAUNTLET GREY" SW7019 BY SHERWIN WILLIAMS</p> <p>GR GUARD RAIL - STAINLESS STEEL SEE SITE PLAN AND DETAIL 3/A2.0</p> <p>L1 RECESSED LIGHT FIXTURE - SEE ELECTRICAL # - COLOR: C1 = WHITE C2 = GOLD</p> <p>L2 RADIAL SCONCE LIGHT FIXTURE - SEE ELECTRICAL COLOR: PLATINUM SILVER</p> <p>LE ACCENT LIGHTING - SEE ELECTRICAL # - LED LIGHT: L1 = SLIM LED (DOWN ONLY) L2 = UP ONLY FLOOD FIXTURE</p> <p>MF METAL FASCIA: PRE-FAB ANCHOR-TITE FASCIA # - COLOR: C1 = WEATHERED ZINC C2 = RAL 7022</p>	<p>PB PIPE BOLLARD - SEE SITE PLAN AND DETAIL 3/A2.1 COLOR: "IRON ORE" SW 7069 BY SHERWIN WILLIAMS</p> <p>RO ROOF DRAIN OVERFLOW PIPE - PAINT TO MATCH SURROUNDING MATERIAL</p> <p>S McDONALD'S SIGNAGE BY OTHERS - UNDER SEPARATE # - COLOR: C1 = WEATHERED ZINC RACEWAY C2 = RAL 7022 RACEWAY</p> <p>ST CO2 STROBE/ALARM: SEE MECHANICAL DRAWINGS FOR SPECIFICATION.</p> <p>TE TRU EXTERIOR 1"x6" TRIM, PAINTED ON SITE COLOR: "IRON ORE" SW 7069 BY SHERWIN WILLIAMS</p> <p>UN METAL UNDERSCORE COLOR: GOLD</p> <p>W EXTERIOR WINDOW ASSEMBLY - TEMPERED GLASS COLOR: DARK BRONZE - SEE SHEET A5.0 FOR ASSEMBLY NOTE & A6.0 FOR WINDOW TYPES. XX - DRIVE-THRU WINDOWS BY READY ACCESS MODEL: 600 SERIES, 36" SERVICE HEIGHT WITH TRANSOM, MANUAL OPEN, ELECTRONIC RELEASE COLOR: DEEP BRONZE SLIDE DIRECTION: RL = RIGHT TO LEFT LR = LEFT TO RIGHT</p>



ALL DRAWINGS AND WRITTEN MATERIAL CONTAINED HEREIN ARE THE PROPERTY OF THE LINGLE DESIGN GROUP, INC. THEY MAY NOT BE REVISED, COPIED, REUSED OR DISCLOSED IN ANY MANNER WITHOUT WRITTEN AUTHORIZATION FROM THE ARCHITECT.



STATE ID: 481099	PROJECT #: 26-080
NATIONAL #: 45569	DRAWN BY: RP
	CHECKED BY: JK

DATE:
04/15/26 - P&Z REVIEW SET - 001

REVISIONS
△
△
△
△
△

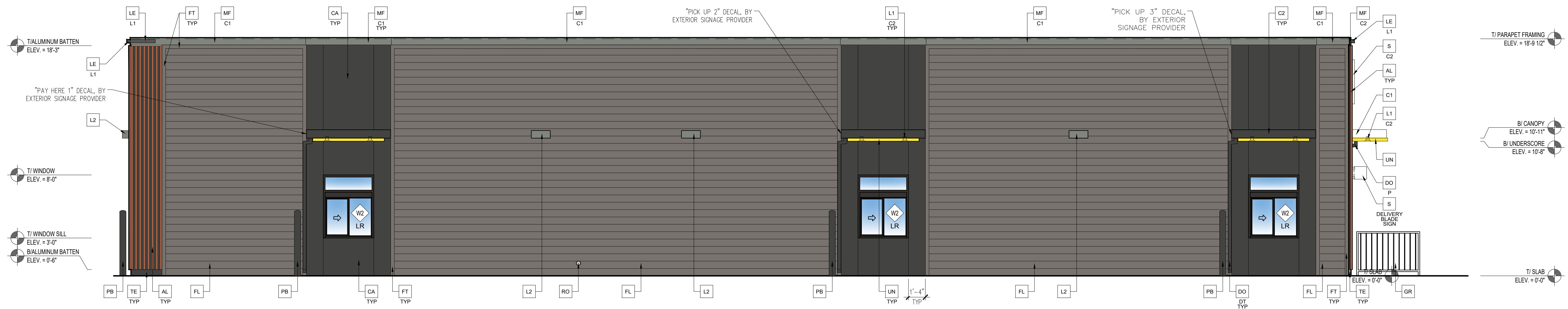
CLIENT
McDonald's USA, LLC

PROTOTYPE
BB20 4590 WW-HB
ISSUE DATE 02/26

ADDRESS
1221 ERIE AVENUE
SHEBOYGAN, WI 53081

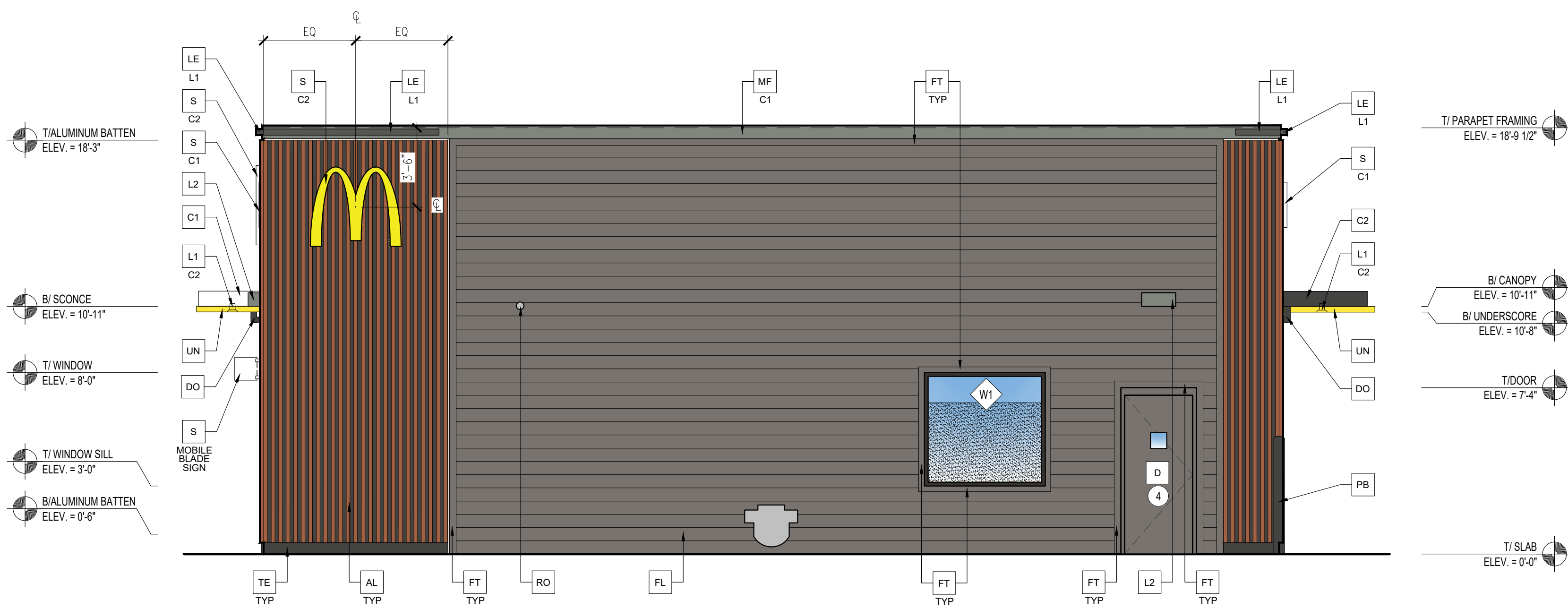
SHEET TITLE
EXTERIOR ELEVATIONS

SHEET NUMBER:
A2.0



1 DRIVE-THRU ELEVATION

Scale: 1/4"=1'-0"



2 REAR ELEVATION

Scale: 1/4"=1'-0"

ELEVATION KEY NOTES:

COLOR SCHEME: 'STEEL' SCHEME				
<p>AL ALUMINUM BATTEN SYSTEM SIZE: 2"x2" PROFILE COLOR: WOOD GRAIN, BACKRAIL UNFINISHED, ENDCAP PAINTED TO MATCH SUBSTRATE: 1/2" EXTERIOR HIGH DENSITY OVERLAY (HDO) PLYWOOD, BB, GROUP 1, HDO BOTH FACES, APA TRADEMARKED. COURSE GRIT SAND SURFACES PRIOR TO PRIMING, PRIME AND PAINT BOTH SIDES AND ALL EDGES PRIOR TO INSTALLATION. SUBSTRATE COLOR: "IRON ORE" SW 7069 BY SHERWIN WILLIAMS</p> <p>C1 ALUMINUM CANOPY SYSTEM COLOR: WHITE</p> <p>C2 ALUMINUM CANOPY SYSTEM COLOR: RAL 7022</p> <p>CA CITADEL ACM WALL PANELS COLOR: UMBRA GRAY</p>	<p>D HOLLOW METAL DOOR PAINT: GAUNTLET GRAY SW 7019 BY SHERWIN WILLIAMS</p> <p>DE DECAL BY GRAPHICS SUPPLIER SURFACE APPLIED, FIELD INSTALLED, PRE CUT, PRE SPACED. SUPPLIERS: VOMEIA (865) 330-7337, ann.bowen@vomeia.com GEX INTERNATIONAL (847) 543-4600, mcdonaldsdecor@gfi.com</p> <p>DO DOWNSPOUT - 3" DOWNSPOUT BY CANOPY SYSTEM MANUFACTURER - COORDINATE WITH CIVIL TO TIE INTO STORM DRAIN - COLOR: RAL 7022 TYPE/LOCATION: DT = AT DRIVE THRU LOCATIONS, DOWNSPOUTS CAN OUTLET DIRECTLY TO PAVEMENT IN DRIVE THRU LANE. P = AT PEDESTRIAN LOCATIONS, APPROVED CONNECTION OPTIONS ARE: DRAIN TO LANDSCAPE OR AREA DRAIN.</p> <p>FB FILL BOX ## - TYPE: CO2 = BULK CO2 (EQPM SCHEDULE ITEM 49.00) BO = BULK OIL (EQPM SCHEDULE ITEM 700.18)</p> <p>FL FIBER CEMENT LAP SIDING: SMOOTH HARDI-BOARD PLANK BY JAMES HARDIE, 8-1/4" WIDTH, 7" EXPOSURE, HZ5 PAINT: "GAUNTLET GREY" SW7019 BY SHERWIN WILLIAMS</p>	<p>FT FIBER CEMENT TRIM: HARDIE TRIM BOARDS 4/4 SMOOTH, 3 1/2" WIDTH, 3/4" THICK, HZ5 PAINT: "GAUNTLET GREY" SW7019 BY SHERWIN WILLIAMS</p> <p>GR GUARD RAIL - STAINLESS STEEL SEE SITE PLAN AND DETAIL 3/A2.0</p> <p>L1 RECESSED LIGHT FIXTURE - SEE ELECTRICAL ## - COLOR: C1 = WHITE C2 = GOLD</p> <p>L2 RADIAL SCONCE LIGHT FIXTURE - SEE ELECTRICAL COLOR: PLATINUM SILVER</p> <p>LE ACCENT LIGHTING - SEE ELECTRICAL ## - LED LIGHT: L1 = SLIM LED (DOWN ONLY) L2 = UP ONLY FLOOD FIXTURE</p> <p>MF METAL FASCIA: PRE-FAB ANCHOR-TITE FASCIA ## - COLOR: C1 = WEATHERED ZINC C2 = RAL 7022</p>	<p>PB PIPE BOLLARD - SEE SITE PLAN AND DETAIL 3/A2.1 USA 310-SD BASTION, COLOR: RAL 7022</p> <p>RO ROOF DRAIN OVERFLOW PIPE - PAINT TO MATCH SURROUNDING MATERIAL</p> <p>S McDONALD'S SIGNAGE BY OTHERS - UNDER SEPARATE ## - COLOR: C1 = WEATHERED ZINC RACEWAY C2 = RAL 7022 RACEWAY</p> <p>ST CO2 STROBE/ALARM: SEE MECHANICAL DRAWINGS FOR SPECIFICATION.</p>	<p>TE TRU EXTERIOR 1"x6" TRIM, PAINTED ON SITE COLOR: "IRON ORE" SW 7069 BY SHERWIN WILLIAMS</p> <p>UN METAL UNDERSCORE COLOR: GOLD</p> <p>WZ EXTERIOR WINDOW ASSEMBLY - TEMPERED GLASS COLOR: DARK BRONZE - SEE SHEET A5.0 FOR ASSEMBLY NOTE & A6.0 FOR WINDOW TYPES.</p> <p>XX DRIVE-THRU WINDOWS BY READY ACCESS MODEL: 600 SERIES, 36" SERVICE HEIGHT WITH TRANSOM, MANUAL OPEN; ELECTRONIC RELEASE COLOR: DEEP BRONZE SLIDE DIRECTION: RL = RIGHT TO LEFT LR = LEFT TO RIGHT</p>



© ALL DRAWINGS AND WRITTEN MATERIAL CONTAINED HEREIN ARE THE PROPERTY OF THE LINGLE DESIGN GROUP, INC. THEY MAY NOT BE REVISED, COPIED, REUSED OR DISCLOSED IN ANY MANNER WITHOUT WRITTEN AUTHORIZATION FROM THE ARCHITECT.



STATE ID: 481099	PROJECT #: 26-080
NATIONAL #: 45569	DRAWN BY: RP
	CHECKED BY: JK

DATE:
04/15/26 - P&Z REVIEW SET - 001

REVISIONS

△	
△	
△	
△	
△	

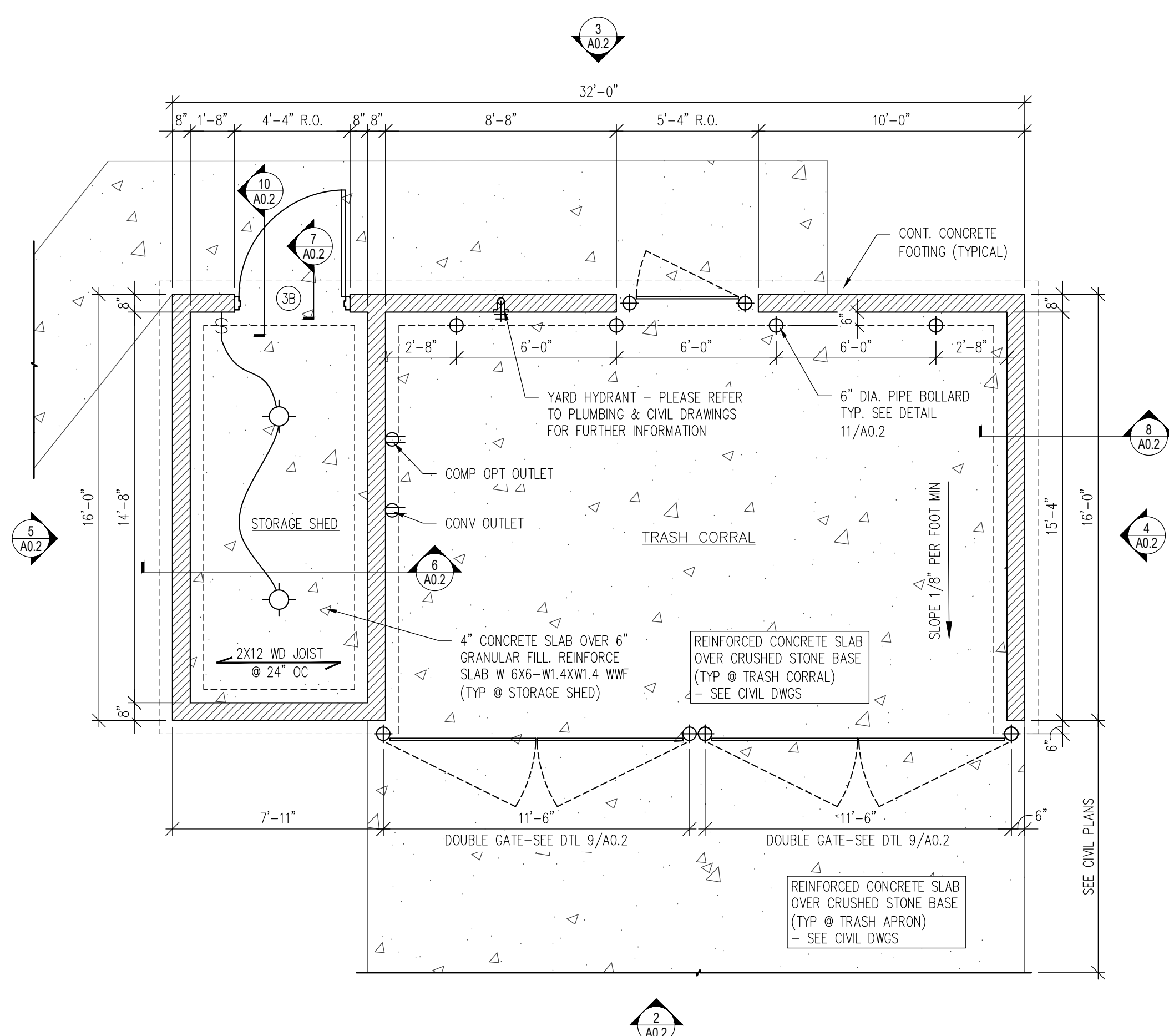
CLIENT
McDonald's USA, LLC

PROTOTYPE
BB20 4590 WW-HB
ISSUE DATE 02/26

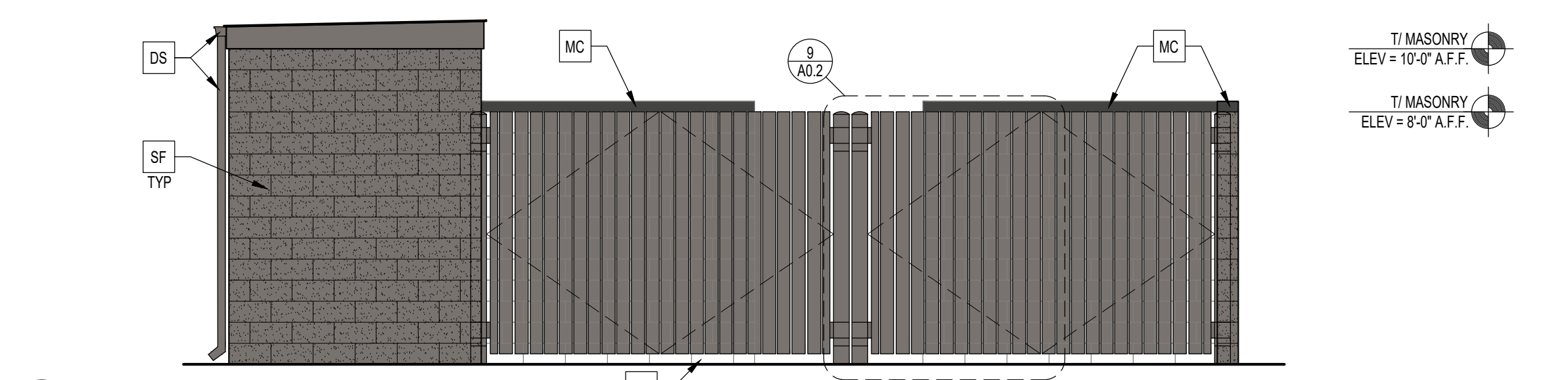
ADDRESS
1221 ERIE AVENUE
SHEBOYGAN, WI 53081

SHEET TITLE
EXTERIOR ELEVATIONS

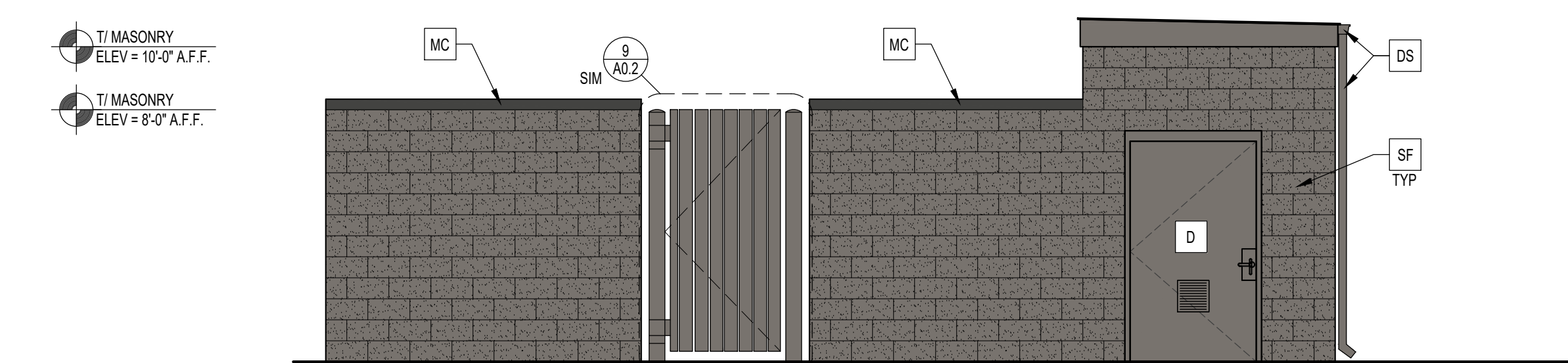
SHEET NUMBER:
A2.1



NOTES:
 - INCANDESCENT LIGHT FIXTURE SHALL BE FURNISHED, WIRE GUARD, 40 WATT LAMP, AND SURFACE MOUNT, PASS & SEMORE-#44 OR LIGHTING LTD-#1743-2000 AWG
 - TURBINE FAN SHALL BE FURNISHED AND INSTALLED IN SHED ROOF
 - TRASH CORRAL POWER: 3/4" C-4#10 & 3/8" GND TO A 30A-2P AND A 20A-1P CB IN PANEL AP-2 FOR TRASH COMPACTOR AND WP GFCI DCO. PROVIDE 30A-2P NF DISCONNECT FOR TRASH COMPACTOR. VERIFY EXACT LOCATION AND ALL REQUIREMENTS OF TRASH CORRAL IN FIELD.



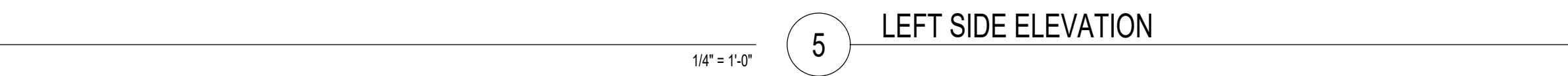
2 FRONT ELEVATION



3 REAR ELEVATION

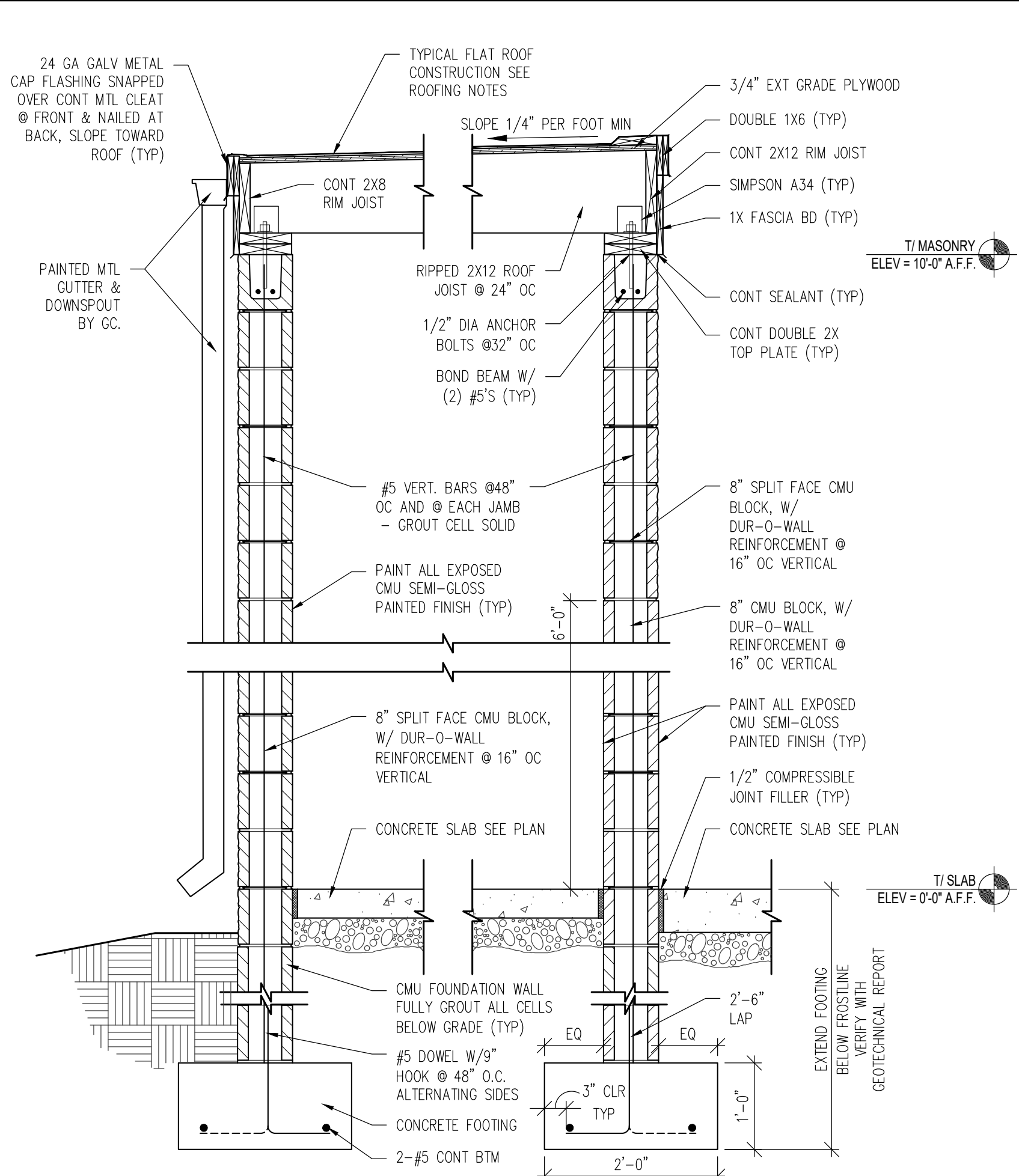


4 RIGHT SIDE ELEVATION

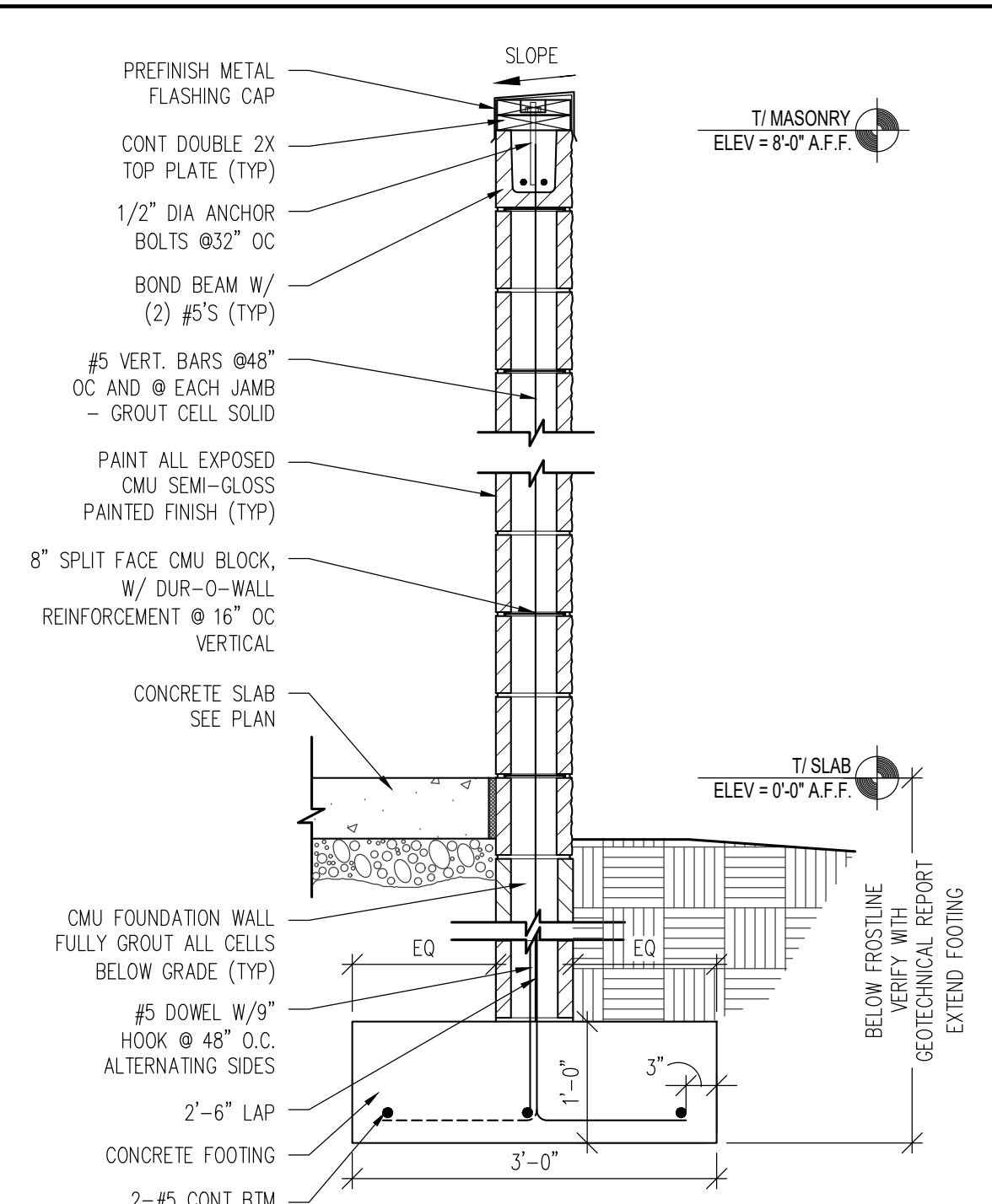
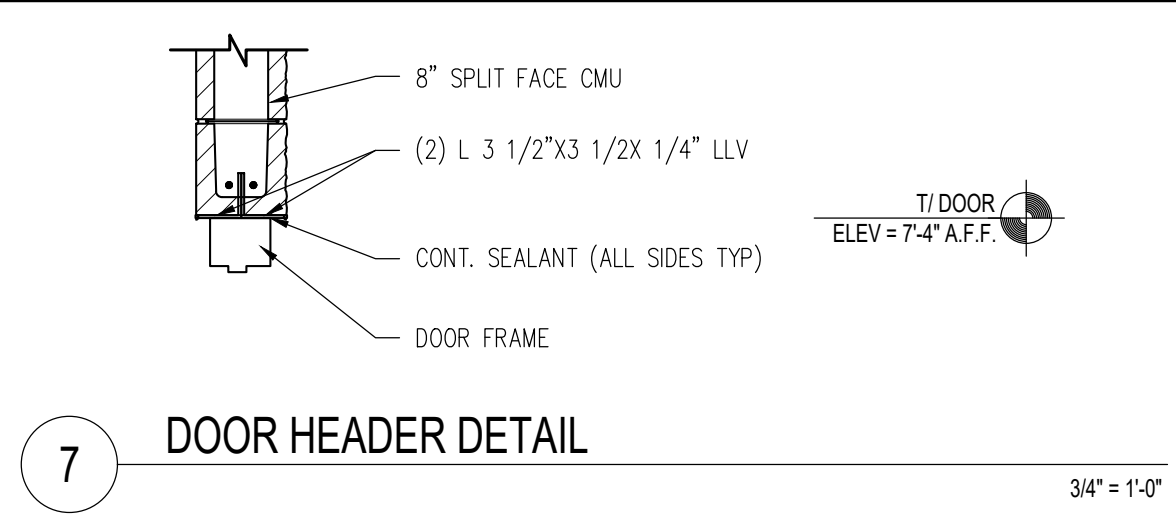


5 LEFT SIDE ELEVATION

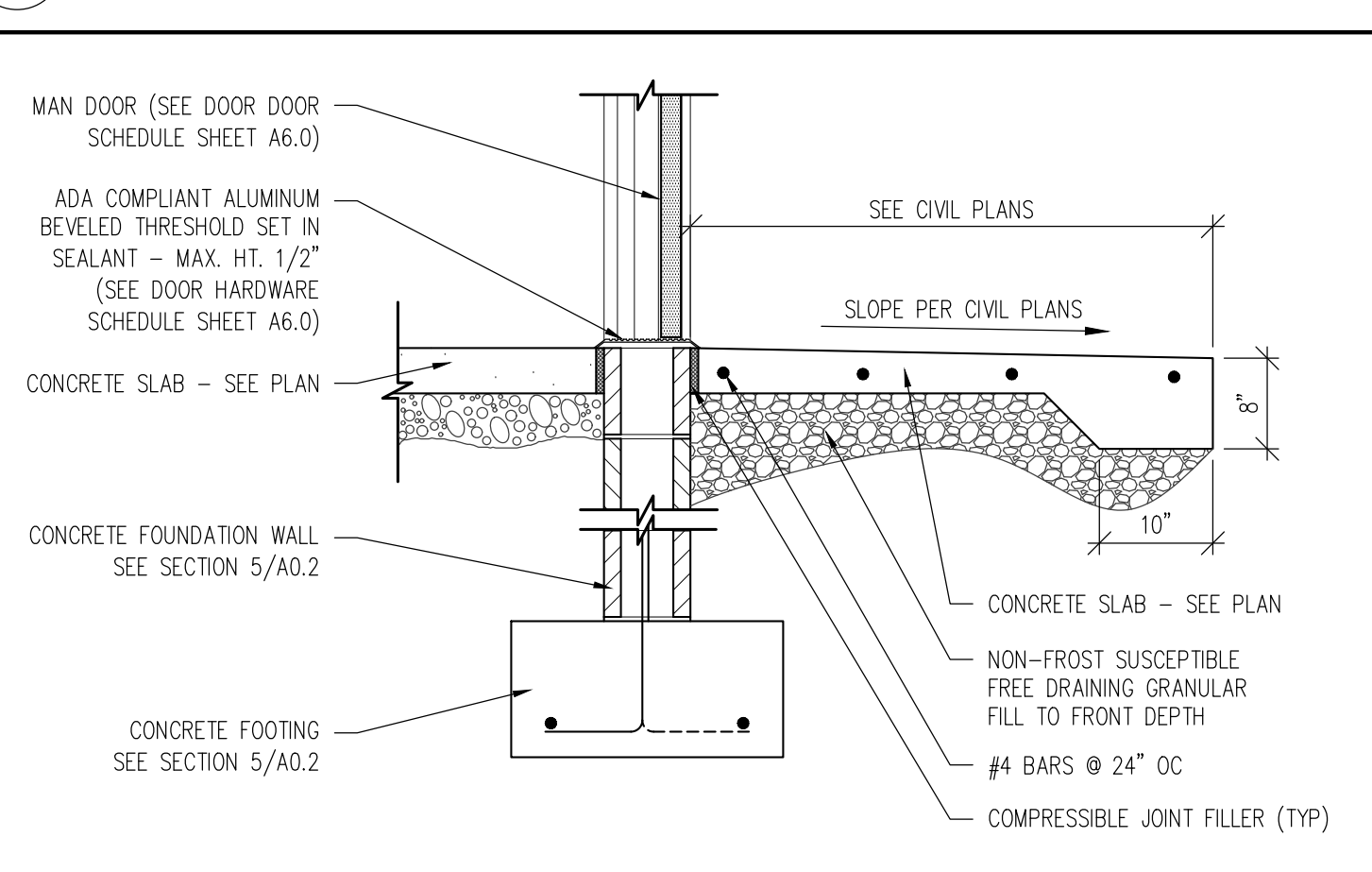
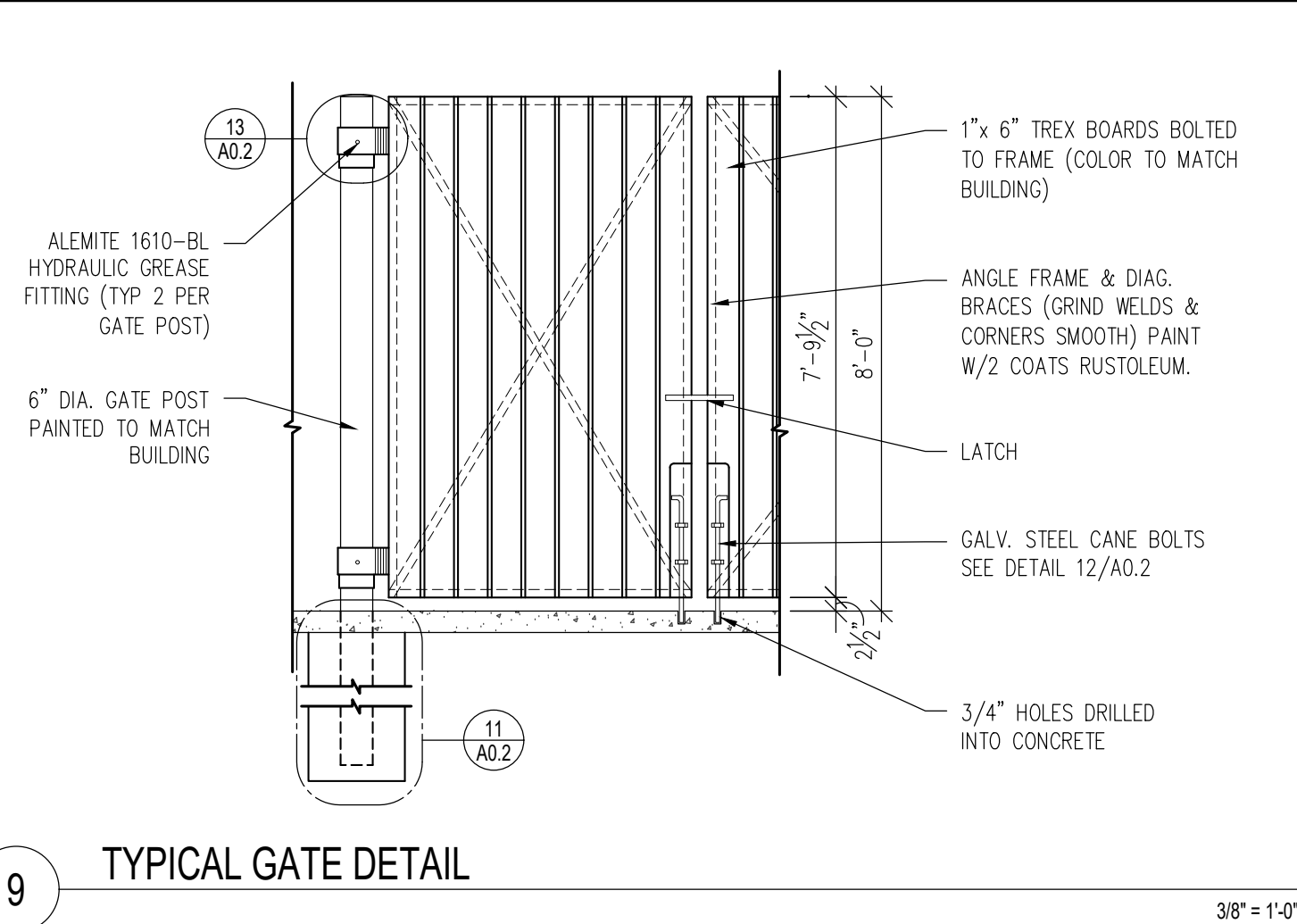
1 TRASH ENCLOSURE PLAN W/ SHED



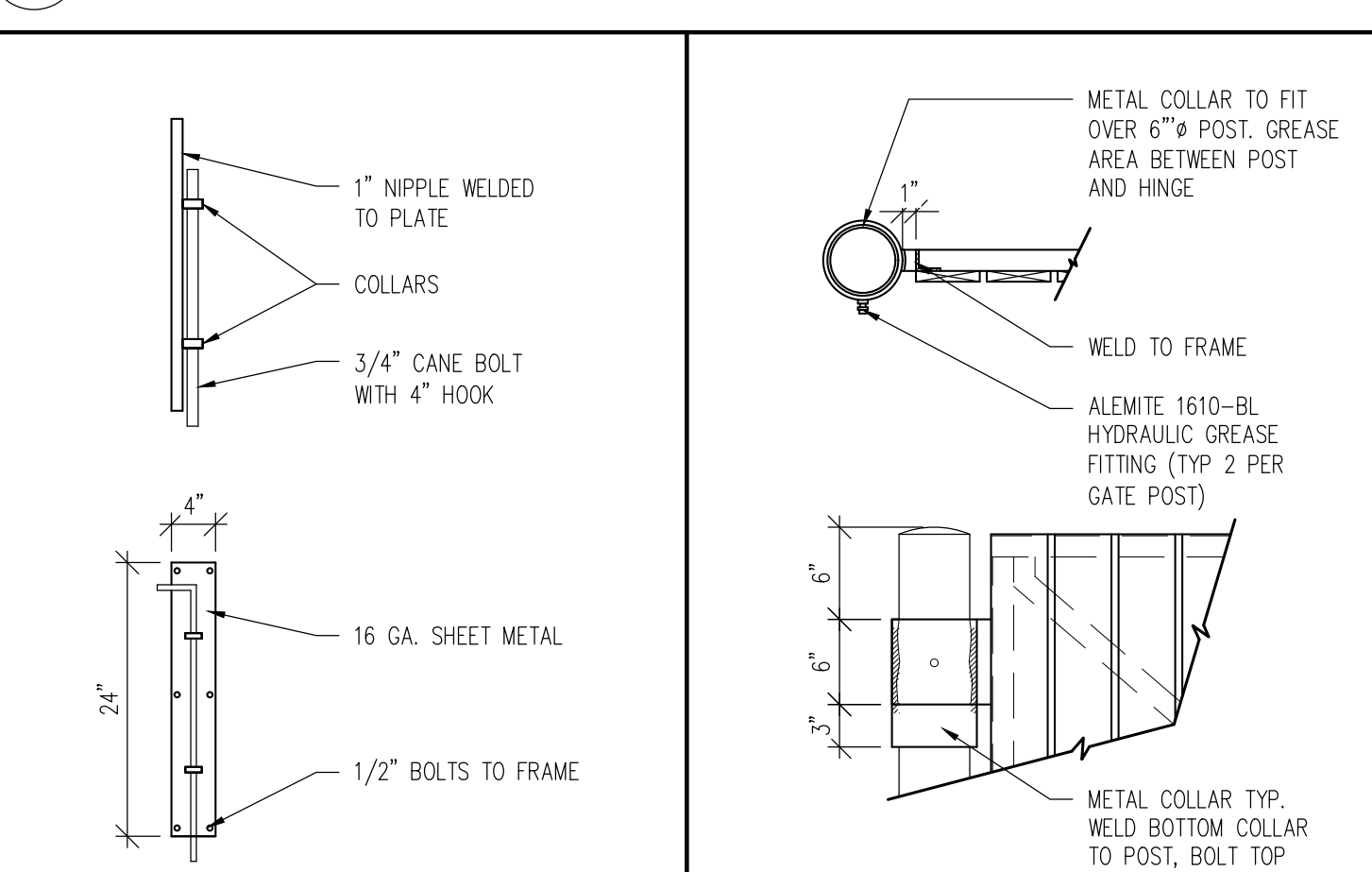
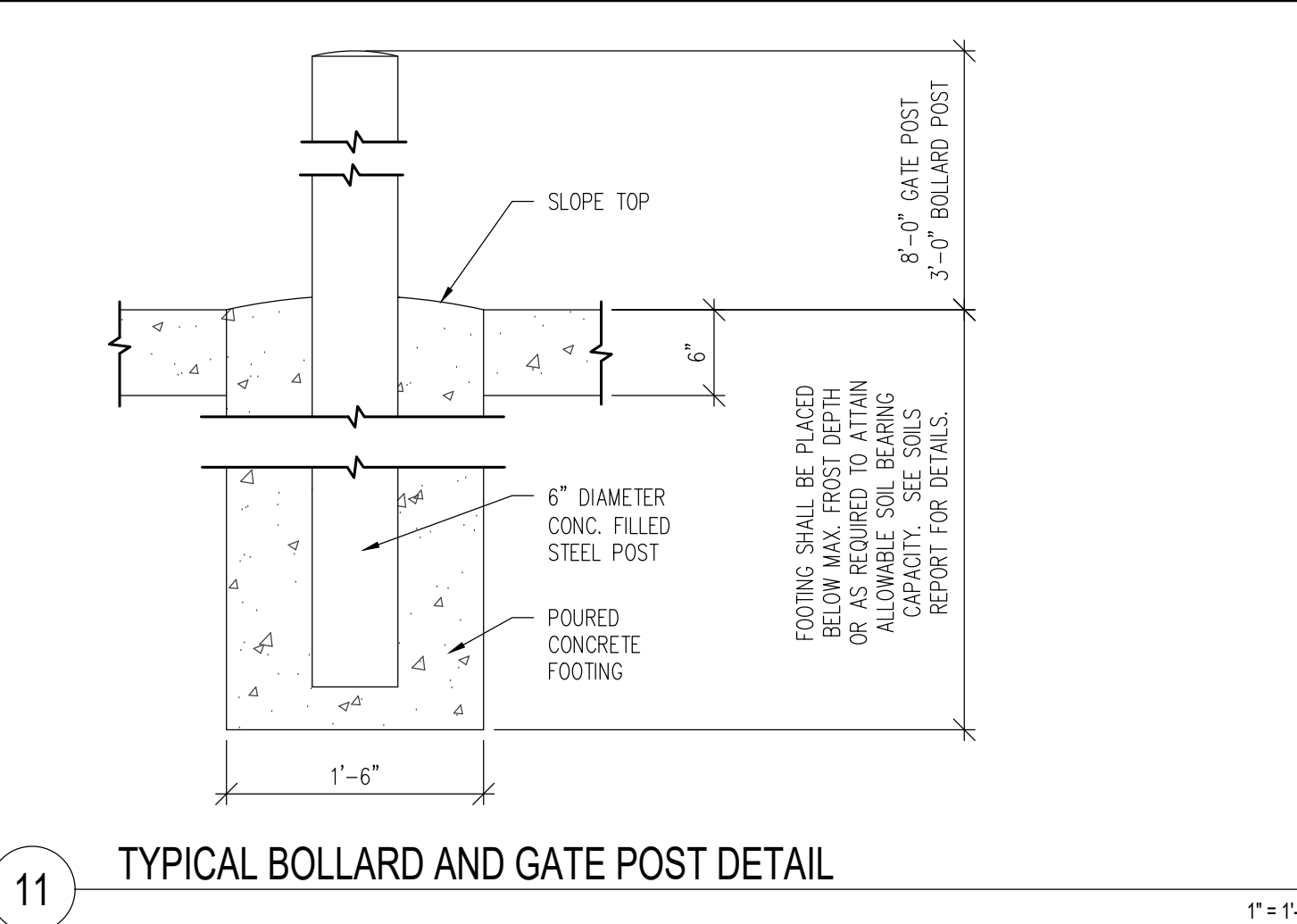
6 TYPICAL STORAGE SHED SECTION



8 TYPICAL WALL SECTION



10 STORAGE SHED DOOR SILL DETAIL



12 BOLT DETAILS
 13 HINGE DETAILS

- KEY NOTES:
- CMU CMU SEMI-GLOSS PAINTED FINISH
 - D HOLLOW METAL DOOR PAINT: GAUNTLET GRAY SW 7019 BY SHERWIN WILLIAMS
 - DS GUTTER AND DOWNSPOUT PAINT: GAUNTLET GRAY SW 7019 BY SHERWIN WILLIAMS
 - SF 8" SPLIT FACE CMU BLOCK BY NORTFIELD BLOCK ASH OR EQUAL COLOR: MATCH MAIN BUILDING, PRISM PIGMENTS OR EQUAL MORTAR TO MATCH BLOCK.
 - MC METAL COPING - UNA-CLAD BY FIRESTONE ANODIZED ALUMINUM COLOR: RAL 7022



ALL DRAWINGS AND WRITTEN MATERIAL CONTAINED HEREIN ARE THE PROPERTY OF THE LINGLE DESIGN GROUP, INC. THEY MAY NOT BE REVISED, COPIED, REUSED OR DISCLOSED IN ANY MANNER WITHOUT WRITTEN AUTHORIZATION FROM THE ARCHITECT.



STATE ID: 481099
 NATIONAL #: 45569
 PROJECT #: 26-080
 DRAWN BY: RP
 CHECKED BY: JK

DATE: 04/15/26 - P&Z REVIEW SET - 001

REVISIONS

CLIENT
McDonald's USA, LLC

PROTOTYPE
 BB20 4590 WW-HB
 ISSUE DATE 02/26

ADDRESS
 1221 ERIE AVENUE
 SHEBOYGAN, WI 53081

SHEET TITLE
TRASH ENCLOSURE PLAN AND DETAILS

SHEET NUMBER:
A0.2