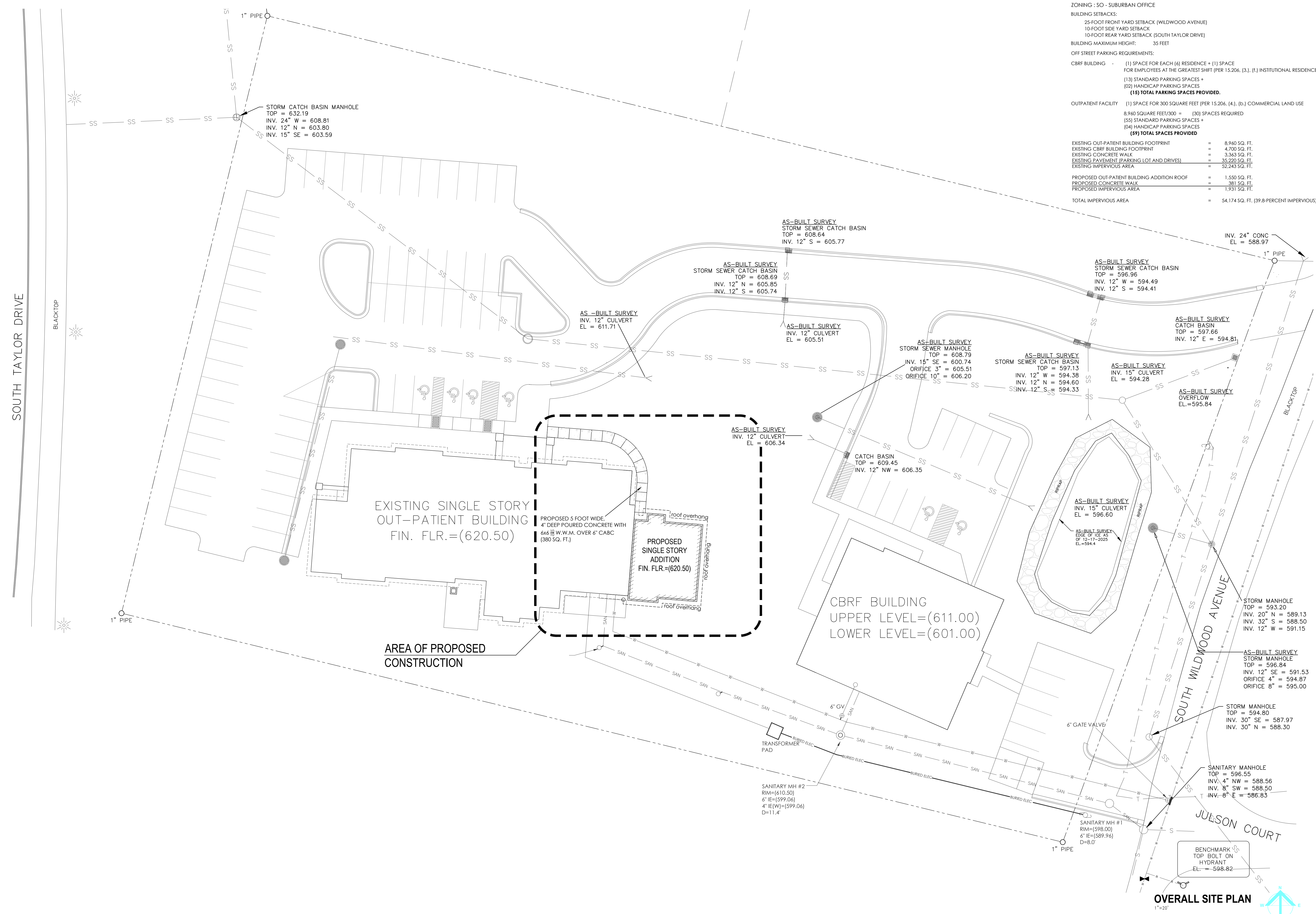


SITE DATA

TOTAL SITE AREA = 136,283.3 SQ.FT. (3.13 AC.)
 SITE ADDRESS: 1108 SOUTH WILDWOOD AVENUE
 ZONING : SO - SUBURBAN OFFICE
 BUILDING SETBACKS:
 25-FOOT FRONT YARD SETBACK (WILDWOOD AVENUE)
 10-FOOT SIDE YARD SETBACK
 10-FOOT REAR YARD SETBACK (SOUTH TAYLOR DRIVE)
 BUILDING MAXIMUM HEIGHT: 35 FEET
 OFF STREET PARKING REQUIREMENTS:
 CBRF BUILDING (1) SPACE FOR EACH (6) RESIDENCE + (1) SPACE FOR EMPLOYEES AT THE GREATEST SHIFT (PER 15.206, (3), (1) INSTITUTIONAL RESIDENCE
 (13) STANDARD PARKING SPACES +
 (02) HANDICAP PARKING SPACES
(15) TOTAL PARKING SPACES PROVIDED.
 OUTPATIENT FACILITY (1) SPACE FOR 300 SQUARE FEET (PER 15.206, (4), (b.) COMMERCIAL LAND USE
 8,960 SQUARE FEET/300 = (30) SPACES REQUIRED
 (55) STANDARD PARKING SPACES +
 (04) HANDICAP PARKING SPACES
(59) TOTAL SPACES PROVIDED

EXISTING OUT-PATIENT BUILDING FOOTPRINT	=	8,960 SQ. FT.
EXISTING CBRF BUILDING FOOTPRINT	=	4,700 SQ. FT.
EXISTING CONCRETE WALK	=	3,363 SQ. FT.
EXISTING PAVEMENT (PARKING LOT AND DRIVES)	=	35,220 SQ. FT.
EXISTING IMPERVIOUS AREA	=	52,243 SQ. FT.
PROPOSED OUT-PATIENT BUILDING ADDITION ROOF	=	1,550 SQ. FT.
PROPOSED CONCRETE WALK	=	381 SQ. FT.
PROPOSED IMPERVIOUS AREA	=	1,931 SQ. FT.
TOTAL IMPERVIOUS AREA	=	54,174 SQ. FT. (39.8-PERCENT IMPERVIOUS)



Rogers Behavioral Health - Sheboygan
1108 S. Wildwood Avenue
Sheboygan, Wisconsin 53081

Revisions:

Sheet Name:
OVERALL SITE PLAN

Date: 4/10/2026

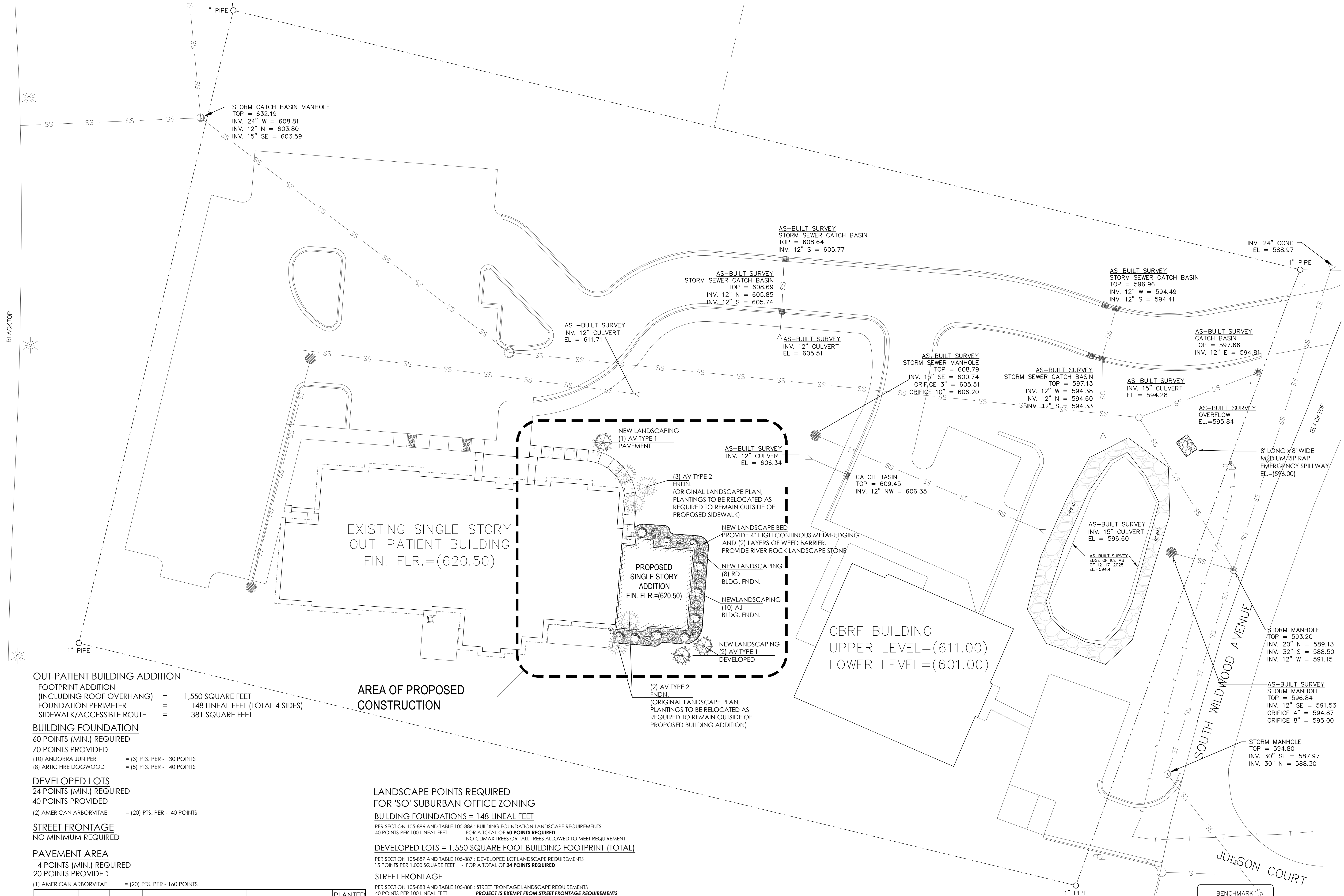
Drawn By: JAB

Project No.:

Sheet No.

C1.1

SOUTH TAYLOR DRIVE



OUT-PATIENT BUILDING ADDITION
 FOOTPRINT ADDITION (INCLUDING ROOF OVERHANG) = 1,550 SQUARE FEET
 FOUNDATION PERIMETER = 148 LINEAL FEET (TOTAL 4 SIDES)
 SIDEWALK/ACCESSIBLE ROUTE = 381 SQUARE FEET

BUILDING FOUNDATION
 60 POINTS (MIN.) REQUIRED
 70 POINTS PROVIDED
 (10) ANDORRA JUNIPER = (3) PTS. PER - 30 POINTS
 (8) ARTIC FIRE DOGWOOD = (5) PTS. PER - 40 POINTS

DEVELOPED LOTS
 24 POINTS (MIN.) REQUIRED
 40 POINTS PROVIDED
 (2) AMERICAN ARBORVITAE = (20) PTS. PER - 40 POINTS

STREET FRONTAGE
 NO MINIMUM REQUIRED

PAVEMENT AREA
 4 POINTS (MIN.) REQUIRED
 20 POINTS PROVIDED

(1) AMERICAN ARBORVITAE = (20) PTS. PER - 160 POINTS

SYMBOL	MARK	QTY.	BOTANICAL NAME	COMMON NAME	PLANTED SIZE
	AV TYPE 1	20	THUJA OCCIDENTALIS	AMERICAN ARBORVITAE	40" TALL
	AJ	23	JUNIPERUS HORIZONTALIS 'PLUMOSA'	ANDORRA JUNIPER	12"-15"
	RD	21	CORNUS SERICEA	ARTIC FIRE DOGWOOD	30"-36"

AREA OF PROPOSED CONSTRUCTION

LANDSCAPE POINTS REQUIRED FOR 'SO' SUBURBAN OFFICE ZONING
 BUILDING FOUNDATIONS = 148 LINEAL FEET

PER SECTION 105-884 AND TABLE 105-884: BUILDING FOUNDATION LANDSCAPE REQUIREMENTS
 40 POINTS PER 100 LINEAL FEET - FOR A TOTAL OF 40 POINTS REQUIRED
 - NO CLIMAX TREES OR TALL TREES ALLOWED TO MEET REQUIREMENT

DEVELOPED LOTS = 1,550 SQUARE FOOT BUILDING FOOTPRINT (TOTAL)
 PER SECTION 105-887 AND TABLE 105-887: DEVELOPED LOT LANDSCAPE REQUIREMENTS
 15 POINTS PER 1,000 SQUARE FEET - FOR A TOTAL OF 24 POINTS REQUIRED

STREET FRONTAGE
 PER SECTION 105-888 AND TABLE 105-888: STREET FRONTAGE LANDSCAPE REQUIREMENTS
 40 POINTS PER 100 LINEAL FEET
PROJECT IS EXEMPT FROM STREET FRONTAGE REQUIREMENTS PURSUANT TO THE CITY OF SHEBOYGAN PLANNING DEPARTMENT

PAVEMENT AREA/CONCRETE AREA = 381 SQUARE FEET
 PER SECTION 105-889 AND TABLE 105-889: PAVED AREA (CONCRETE WALK) LANDSCAPE REQUIREMENTS
 80 POINTS PER 10,000 SQUARE FEET - FOR A TOTAL 4 POINTS REQUIRED

Rogers Behavioral Health - Sheboygan
 1108 S. Wildwood Avenue
 Sheboygan, Wisconsin 53081

Revisions:

Sheet Name:
LANDSCAPE PLAN

Date: 4/10/2026

Drawn By: JAB

Project No.:

Sheet No.

C1.3

LANDSCAPE PLAN
 1"=20'

