



Prepared Exclusively for
Project # 79439

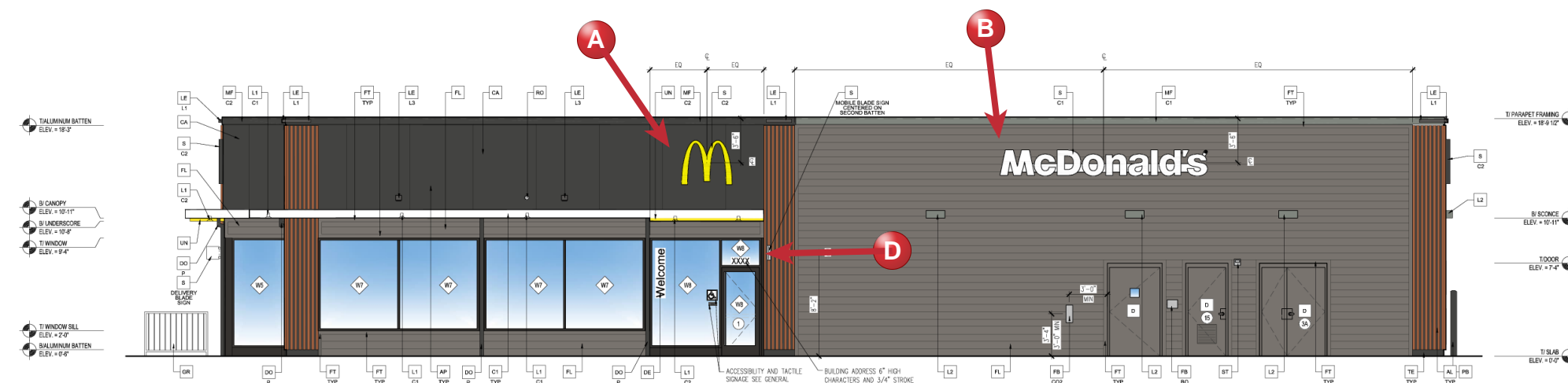
1221 Erie Ave
Sheboygan, WI 53081-3319

April 28, 2026

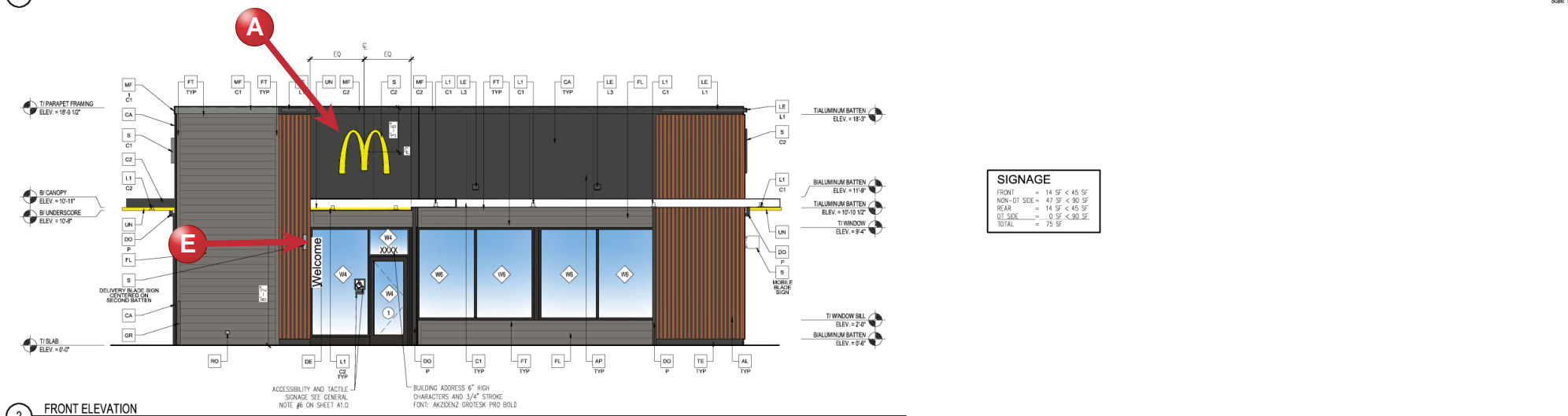
Account Manager: Kari Moyle
kmoyle@everbrite.com (414) 529-3500

Sign Schedule

- A** 42" NG Arch 14 sq ft
- B** 24" NG Wordmark 32.83 sq ft
- D** Mobile Order Blade Sign
- E** McDelivery Blade Sign



1 NON DRIVE-THRU ELEVATION



2 FRONT ELEVATION



© ALL RIGHTS RESERVED. NO PART OF THIS DOCUMENT MAY BE REPRODUCED OR TRANSMITTED IN ANY FORM OR BY ANY MEANS, ELECTRONIC OR MECHANICAL, WITHOUT PERMISSION FROM THE ARCHITECT.

**PRELIMINARY
NOT FOR CONSTRUCTION**

STATE ID: 481099 PROJECT #: 26-200
NATIONAL #: 6068 DRAWN BY: RP
CHECKED BY: JK

DATE: 04/28/2026
DATE: 04/28/2026
DATE: 04/28/2026
DATE: 04/28/2026
DATE: 04/28/2026
DATE: 04/28/2026

CLIENT
**McDonald's
USA, LLC**

PROTOTYPE
BB20 4590 WW-HB
ISSUE DATE 02/26

ADDRESS
1221 ERIE AVENUE
SHEBOYGAN, WI 53081

SHEET TITLE
EXTERIOR
ELEVATIONS

SHEET NUMBER
A2.0

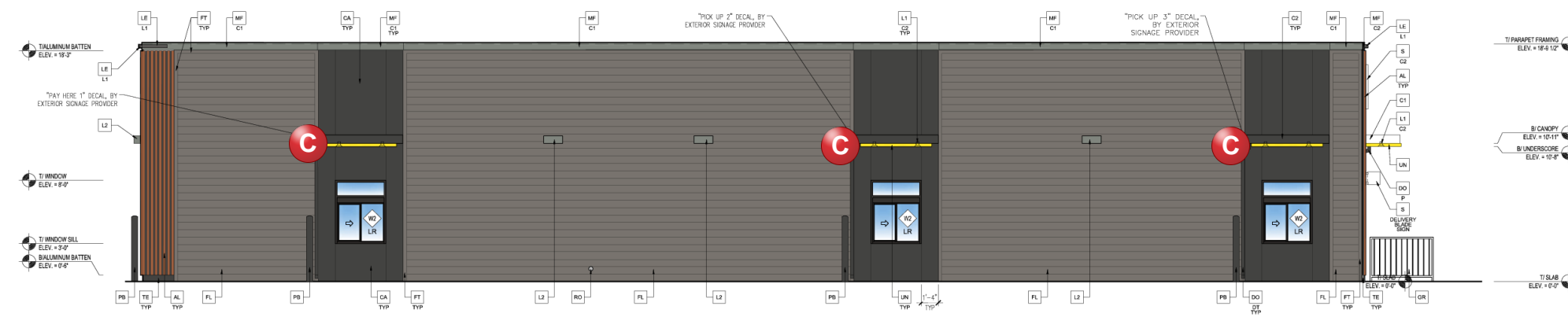
ELEVATION KEY NOTES:					
COLOR SCHEME: STEEL SCHEME					
AL ALUMINUM BATTEN SYSTEM SIZE: 2"x2" PROFILE COLOR: WOOD GRAIN, BACKRAL UNFINISHED, ENDCAP PAINTED TO MATCH SUBSTRATE. 1/2" EXTERIOR HIGH DENSITY OVERLAY (HDD) PLYWOOD, SS, GROUP 1, HOO BOTH FACES. #FA (TRADEMARKED). COURSE GRT SAND SURFACES PRIOR TO FRAMING, PRIME AND PAINT BOTH SIDES AND ALL EDGES PRIOR TO INSTALLATION. SUBSTRATE COLOR: "IRON GREY" SW 7069 BY SHERWIN WILLIAMS	D HOLLOW METAL DOOR PAINT: GAUNTLET GRAY SW 7019 BY SHERWIN WILLIAMS	FT FIBER CEMENT TRIM: HARDY TRIM BOARDS 4/4 SMOOTH, 1/2" WITH 3/4" THICK, HUS PAINT: "GAUNTLET GREY" SW7019 BY SHERWIN WILLIAMS	PE PIPE DOLLARD - SEE SITE PLAN AND DETAIL 3/A2.1 USA 310-SD EASTON, COLOR: RAL 7022	TE TRU EXTERIOR 1"X6" TRIM, PAINTED ON SITE COLOR: "IRON GREY" SW 7069 BY SHERWIN WILLIAMS	
C1 ALUMINUM CANOPY SYSTEM COLOR: WHITE	DE DECAL BY GRAPHICS SUPPLIER SURFACE APPLIED, FIELD INSTALLED, PRE CUT, PRE SPACED. SUPPLIER: VOMELA (865) 330-7337, om.bawen@vomela.com GEX INTERNATIONAL (847) 543-4600, mcDonaldsdecor@x.com	GR GUARD RAIL - STAINLESS STEEL SEE SITE PLAN AND DETAIL 3/A2.0	S MACDONALD'S SIGNAGE BY OTHERS - UNDER SEPARATE # - COLOR: C1 = WEATHERED ZINC RACEWAY C2 = RAL 7022 RACEWAY	LN METAL UNDERSCORE COLOR: GOLD	XX EXTERIOR WINDOW ASSEMBLY - TEMPERED GLASS COLOR: DARK BRONZE - SEE SHEET A1.0 FOR ASSEMBLY NOTE & A1.0 FOR WINDOW TYPES.
C2 ALUMINUM CANOPY SYSTEM COLOR: RAL 7022	DO DOWNSPOUT - 3" DOWNSPOUT BY CANOPY SYSTEM MANUFACTURER - COORDINATE WITH CYRIL TO THE INTO STORM DRAIN - COLOR: RAL 7022 # - TYPE/LOCATION: D1 = AT DRIVE THRU LOCATIONS, DOWNSPOUTS ON OUTLET DIRECTLY TO PARADE IN DRIVE THRU LANE. P = AT PEDESTRIAN LOCATIONS, APPROVED CONNECTION OPTIONS ARE: DRAIN TO LANDSCAPE OR AREA DRAIN.	L1 RECESSED LIGHT FIXTURE - SEE ELECTRICAL # - COLOR: C1 = WHITE C2 = GOLD	BT CO2 STROBE/ALARM, SEE MECHANICAL DRAWINGS FOR SPECIFICATION.	XX DRIVE-THRU WINDOWS BY READY ACCESS MODEL: 600 SERIES, 36" SERVICE HEIGHT WITH TRANSOM, MANUAL OPEN, ELECTRONIC RELEASE COLOR: (SEE BRONZE) - SLIDE DIRECTION: RL = RIGHT TO LEFT LR = LEFT TO RIGHT	
CA CITADEL ACM WALL PANELS COLOR: UMBRA GRAY	FR FULL BOX # - TYPE: C02 = BULK CO2 (ECPM SCHEDULE ITEM 48.00) B0 = BULK OIL (ECPM SCHEDULE ITEM 700.18)	L2 RADIAL SCONCE LIGHT FIXTURE - SEE ELECTRICAL COLOR: PLATINUM SILVER			
	FL FIBER CEMENT LAP SONG: SMOOTH HARD-BOARD PLANK BY JAMES HARDIE, 8-1/4" W/14" W/14" J' JOISTURE, 1/2" PAINT: "GAUNTLET GREY" SW7019 BY SHERWIN WILLIAMS	LE ACCENT LIGHTING - SEE ELECTRICAL # - LED LIGHT: L1 = DIM LED (DOWN ONLY) L2 = UP ONLY FLOOD FIXTURE			
		ME METAL FASADA: PRE-FAB ANCHOR-TITE FASADA # - COLOR: C1 = WEATHERED ZINC C2 = RAL 7022			



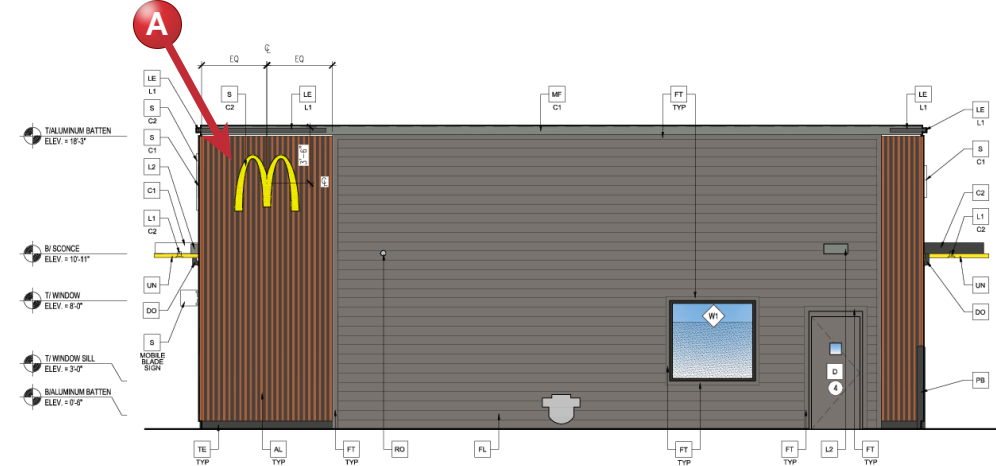
Sign Schedule

A 42" NG Arch 14 sq ft

C Drive-Thru Trellis Decals, 3 Windows



1 DRIVE-THRU ELEVATION



2 REAR ELEVATION

© ALL RIGHTS RESERVED. MATERIALS, COORDINATES, AND THE PROPERTY OF THE LINCOLN DESIGN GROUP, INC. THEY MAY NOT BE REPRODUCED, COPIED, REPRODUCED, OR OTHERWISE USED WITHOUT WRITTEN AUTHORIZATION FROM THE ARCHITECT.

Lincoln Design Group Inc.
1508 WEST MAIN STREET
LEWIS, IL 61248
815.349.9155
1704 BLAKE ST
DENVER, CO 80202
303.774.9873
WWW.LINCOLNDESIGN.COM

**PRELIMINARY
NOT FOR CONSTRUCTION**

STATE ID: 481099
NATIONAL ID: 6000

PROJECT #: 26-200
DRAWN BY: RP
CHECKED BY: JK

DATE: 04/28/2026 - PAZ REVIEW SET - 001

REVISIONS

- △
- △
- △
- △
- △
- △

CLIENT
McDonald's USA, LLC

PROTOTYPE
BB20 4590 WW-HB
ISSUE DATE 02/26

ADDRESS
1221 ERIE AVENUE
SHEBOYGAN, WI 53081

SHEET TITLE
EXTERIOR ELEVATIONS

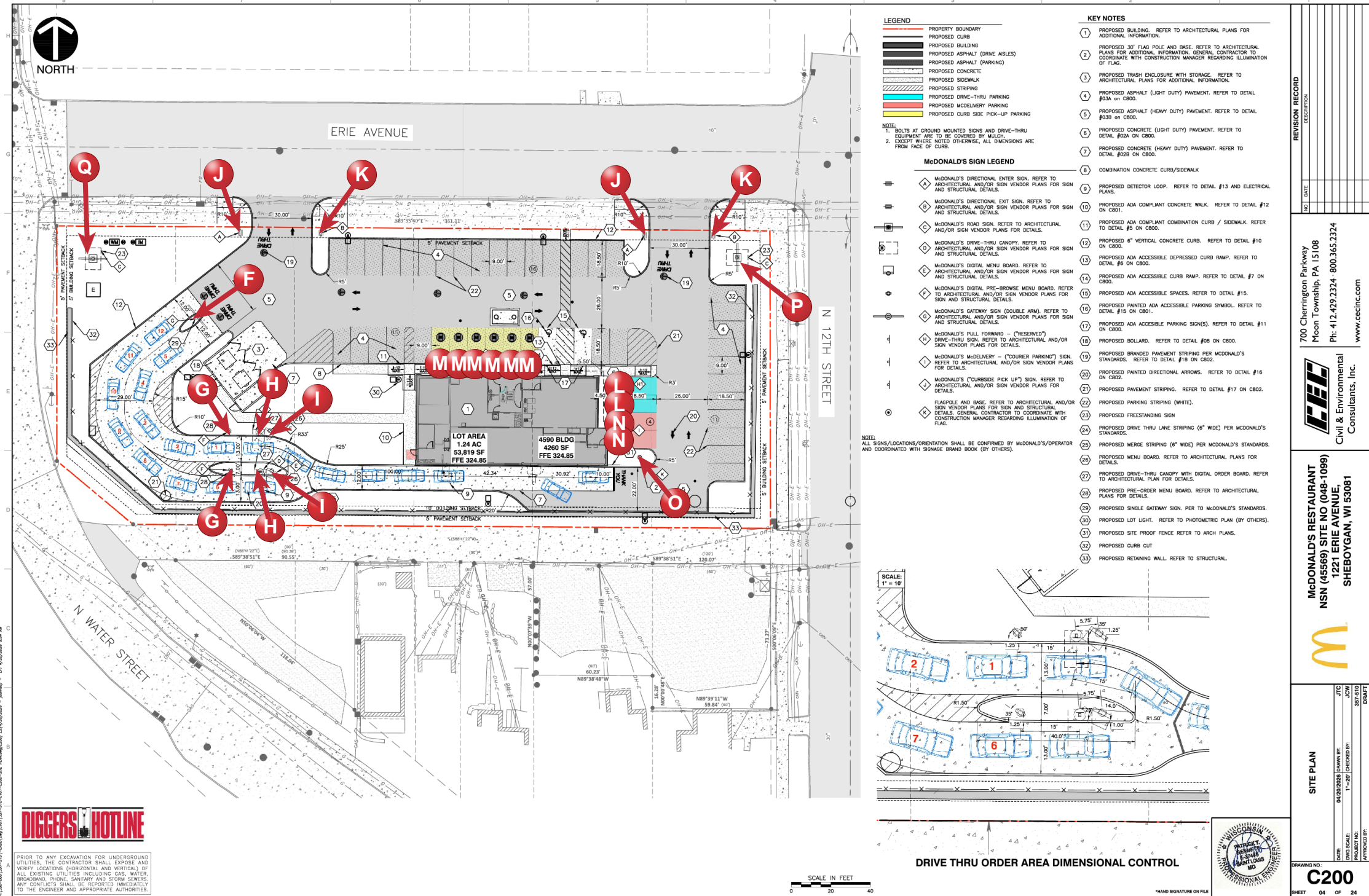
SHEET NUMBER
A2.1

ELEVATION KEY NOTES:	
<p>AL ALUMINUM BATTEN SYSTEM SIZE: 2"x2" PROFILE COLOR: WOOD GRAIN, BACKRAL UNFINISHED, DODGAP PAINTED TO MATCH SUBSTRATE. 1/2" EXTERIOR HIGH DENSITY OVERLAY (HDD) PLYWOOD, BS, GROUP 1, HOO BOTH FACES. #PA TRADEMARKED. COURSE GRT SAND SURFACES PRIOR TO FINISHING. PRIME AND PAINT BOTH SIDES AND ALL EDGES PRIOR TO INSTALLATION. SUBSTRATE COLOR: "IRON GREY" SW 7069 BY SHERWIN WILLIAMS</p> <p>CI ALUMINUM CANOPY SYSTEM COLOR: WHITE</p> <p>CA CITADEL ACM WALL PANELS COLOR: UMBRA GRAY</p>	<p>D YELLOW METAL DOOR PAINT: CAUNTLET GRAY SW 7019 BY SHERWIN WILLIAMS</p> <p>DE DECAL BY GRAPHICS SUPPLIER SURFACE APPLIED, FIELD INSTALLED, PRE CUT, PRE SPACED. SUPPLIER: VOMELA (865) 330-7337, om.bowen@vomela.com GEX INTERNATIONAL (847) 543-4600, mcdonaldsdecor@gi.com</p> <p>DO DOWNSPOUT - 3" DOWNSPOUT BY CANOPY SYSTEM MANUFACTURER - COORDINATE WITH CIVIL TO TIE INTO STORM DRAIN - COLOR: RAL 7022 TYPE/LOCATION: DT = AT DRIVE THRU LOCATIONS, DOWNSPOUTS ON OUTLET DIRECTLY TO PARAPET IN DRIVE THRU LANE. P = AT PEDESTRIAN LOCATIONS, APPROVED CONNECTION OPTIONS ARE: DRAIN TO LANDSCAPE OR AREA DRAIN.</p> <p>FB FILL BOX TYPE: C2 = BULK CO2 (EQPM SCHEDULE ITEM 48.00) BO = BULK OIL (EQPM SCHEDULE ITEM 700.18)</p> <p>FL FIBER CEMENT LAP SIDING, SMOOTH HARD-BOARD PLANK BY JAMES HARDIE, 8-1/4" WIDTH, 17" EXPOSURE, 1/2" PAINT: "CAUNTLET GREY" SW7019 BY SHERWIN WILLIAMS</p>
<p>FT FIBER CEMENT TRIM, HARD-BOARD 4/4 SMOOTH, 3/12" WITH 3/4" THICK, 1/8" PAINT: "CAUNTLET GREY" SW7019 BY SHERWIN WILLIAMS</p> <p>GR GUARD RAIL - STAINLESS STEEL SEE SITE PLAN AND DETAIL 3/A2.0</p> <p>LI RECESSED LIGHT FIXTURE - SEE ELECTRICAL COLOR: C1 = WHITE C2 = GOLD</p> <p>LZ RADIAL SCONCE LIGHT FIXTURE - SEE ELECTRICAL COLOR: PLATINUM SILVER</p> <p>LE ACCENT LIGHTING - SEE ELECTRICAL LED LIGHT: L1 = DOWN LED (DOWN ONLY) L2 = UP ONLY FLOOD FIXTURE</p> <p>MF METAL FASADA, PRE-FAB ANCHOR-TITE FASADA COLOR: C1 = WEATHERED ZINC C2 = RAL 7022</p>	<p>PE PIPE DOLLAND - SEE SITE PLAN AND DETAIL 3/A2.1 USA 310-50 EASTON, COLOR: RAL 7022</p> <p>RO ROOF DRAIN OVERFLOW PIPE - PAINT TO MATCH SURROUNDING MATERIAL</p> <p>S MCDONALD'S SIGNAGE BY OTHERS - UNDER SEPARATE CONTRACT</p> <p>CI = WEATHERED ZINC RACEWAY C2 = RAL 7022 RACEWAY</p> <p>BT CO2 STROBE/ALARM, SEE MECHANICAL DRAWINGS FOR SPECIFICATION.</p> <p>TE TRU EXTERIOR 1"X6" TRIM, PAINTED ON SITE COLOR: "IRON GREY" SW 7069 BY SHERWIN WILLIAMS</p> <p>UN METAL UNDERSCORE COLOR: GOLD</p> <p>XX EXTERIOR WINDOW ASSEMBLY - TEMPERED GLASS COLOR: DARK BRONZE - SEE SHEET A2.0 FOR ASSEMBLY NOTE & ASD FOR WINDOW TYPES. DRIVE-THRU WINDOWS BY READY ACCESS MODEL: 600 SERIES, 36" SERVICE HEIGHT WITH TRANSOM, MANUAL OPEN, ELECTRONIC RELEASE COLOR: 102P BRONZE SLIDE DIRECTION: RL = RIGHT TO LEFT LR = LEFT TO RIGHT</p>

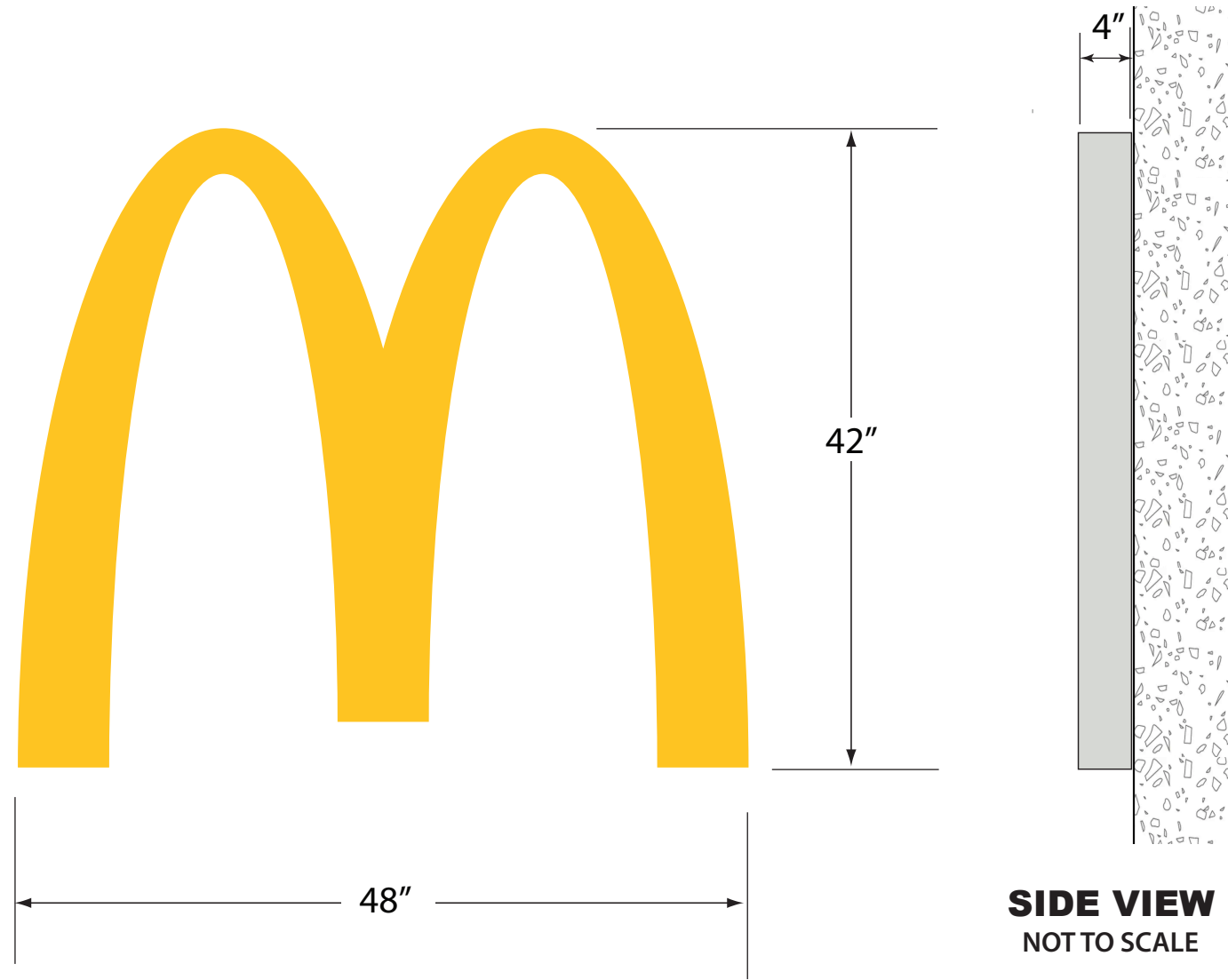


Sign Schedule

- F** Double Welcome Point Gateway-Charcoal
- G** Outdoor Digital Pre-Browse
- H** Spring Board Canopy-Charcoal
- I** Outdoor Digital Menu Board
- J** 48" Next Gen Welcome with Arch
- K** 48" Next Gen Thank You with Arch
- L** Drive-Thru Reserved Signage
- M** Curbside Pick Up Signage
- N** Courier Parking Sign
- O** 25' Flag Pole
- P** 6'3" x 6'3" Next Gen Monument @9'OAH
- Q** 11'6 NG Hwy Sign w/ 4x8 EMC @30'OAH



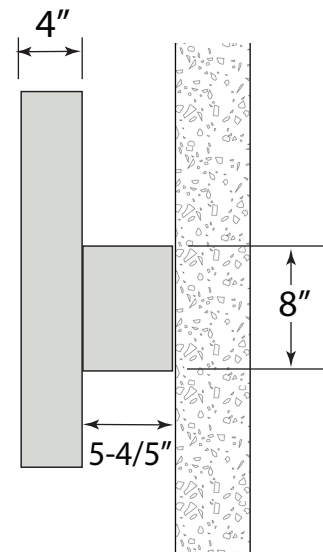
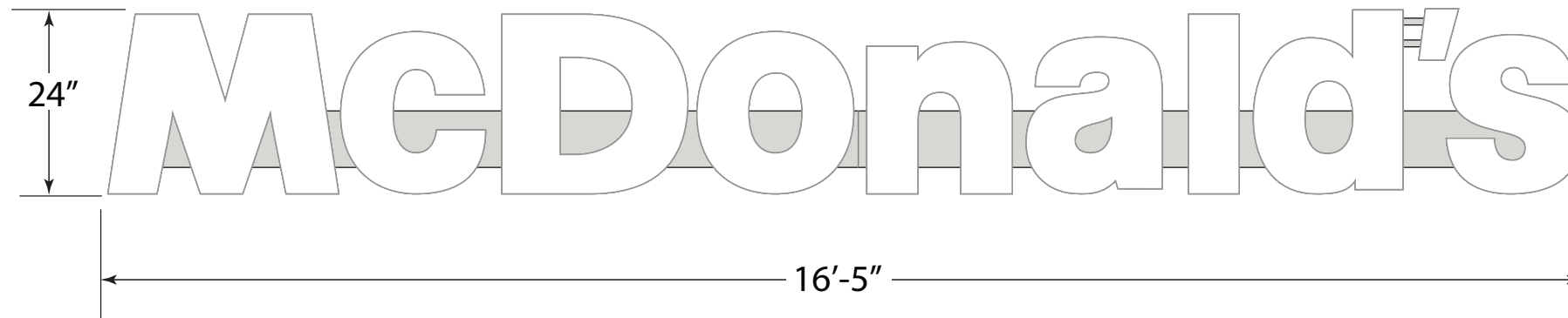
DIGGERS HOTLINE
 PRIOR TO ANY EXCAVATION FOR UNDERGROUND UTILITIES, THE CONTRACTOR SHALL EXPOSE AND VERIFY LOCATIONS (HORIZONTAL AND VERTICAL) OF ALL EXISTING UTILITIES INCLUDING GAS, WATER, BROWNING, PHONE, SANITARY AND STORM SEWERS. ANY CONFLICTS SHALL BE REPORTED IMMEDIATELY TO THE ENGINEER AND APPROPRIATE AUTHORITIES.



SIGN DETAILS:

LED illuminated McDonald's Arch Face

Injection-molded logo with PMS123C Yellow and Next Gen Silver return



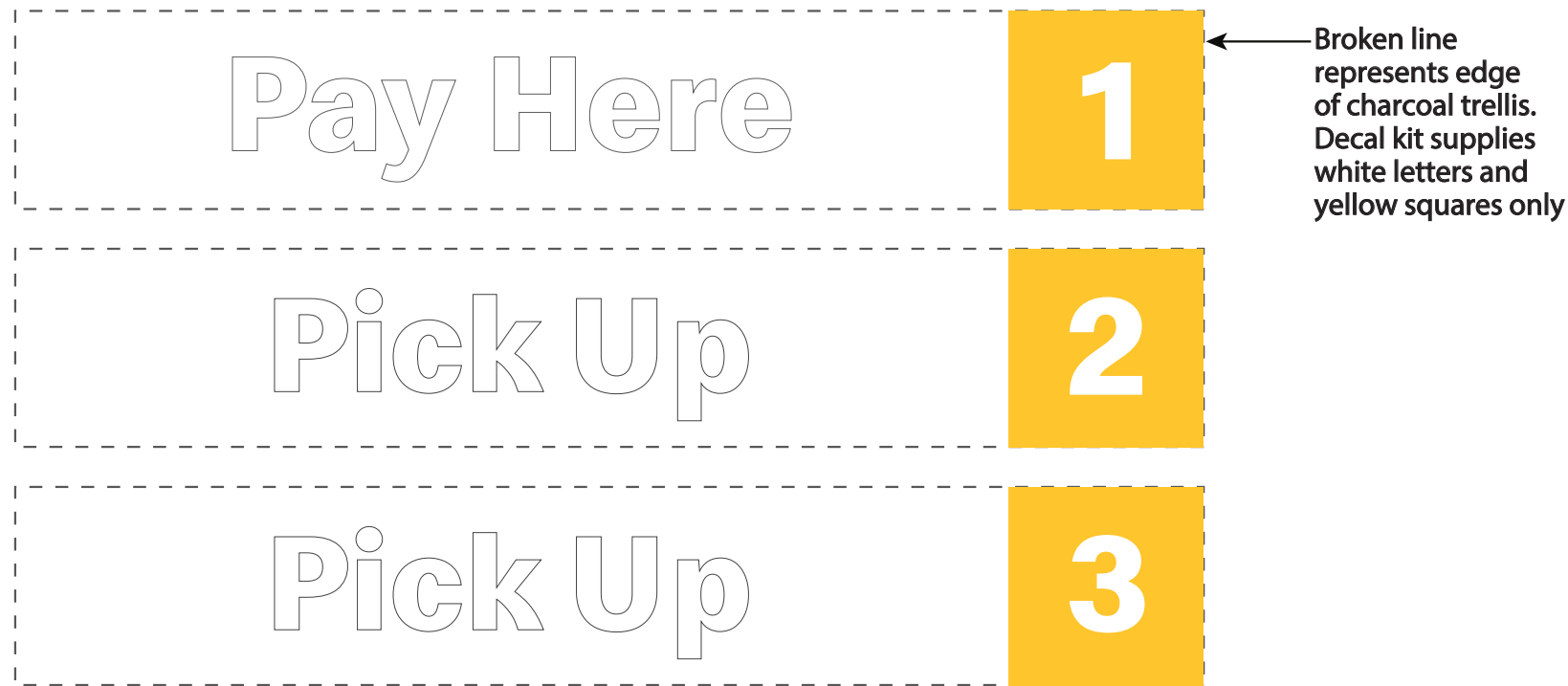
SIDE VIEW
NOT TO SCALE

SIGN DETAILS:

LED illuminated McDonald's Wordmark on Next Gen Silver raceway

Injection-molded letters with White faces and Next Gen Silver returns

Wall mount is standard. Tube mounting kit available for mansard roofs.

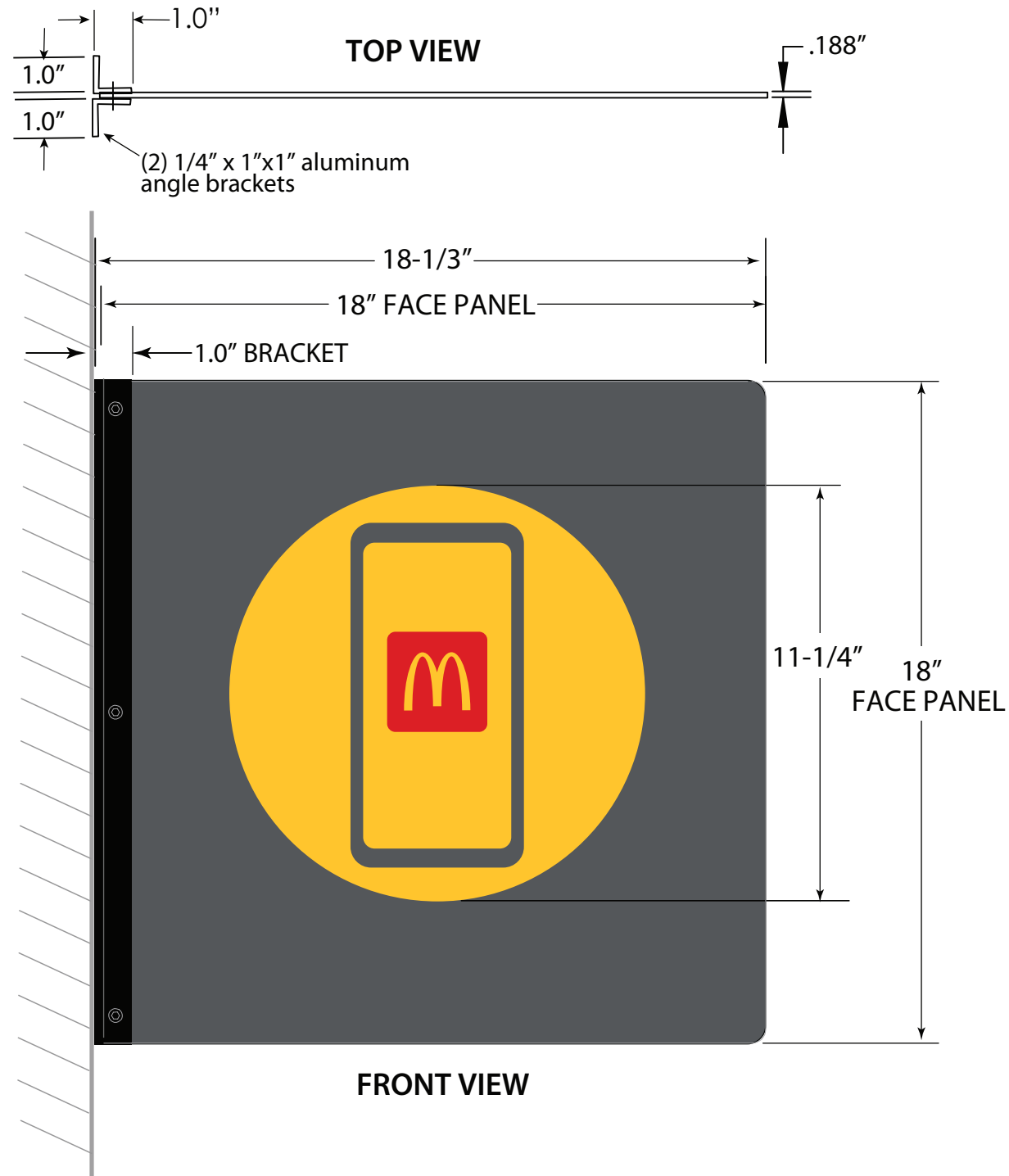


Product Details:

Decals for 48" charcoal drive-thru trellis ONLY.

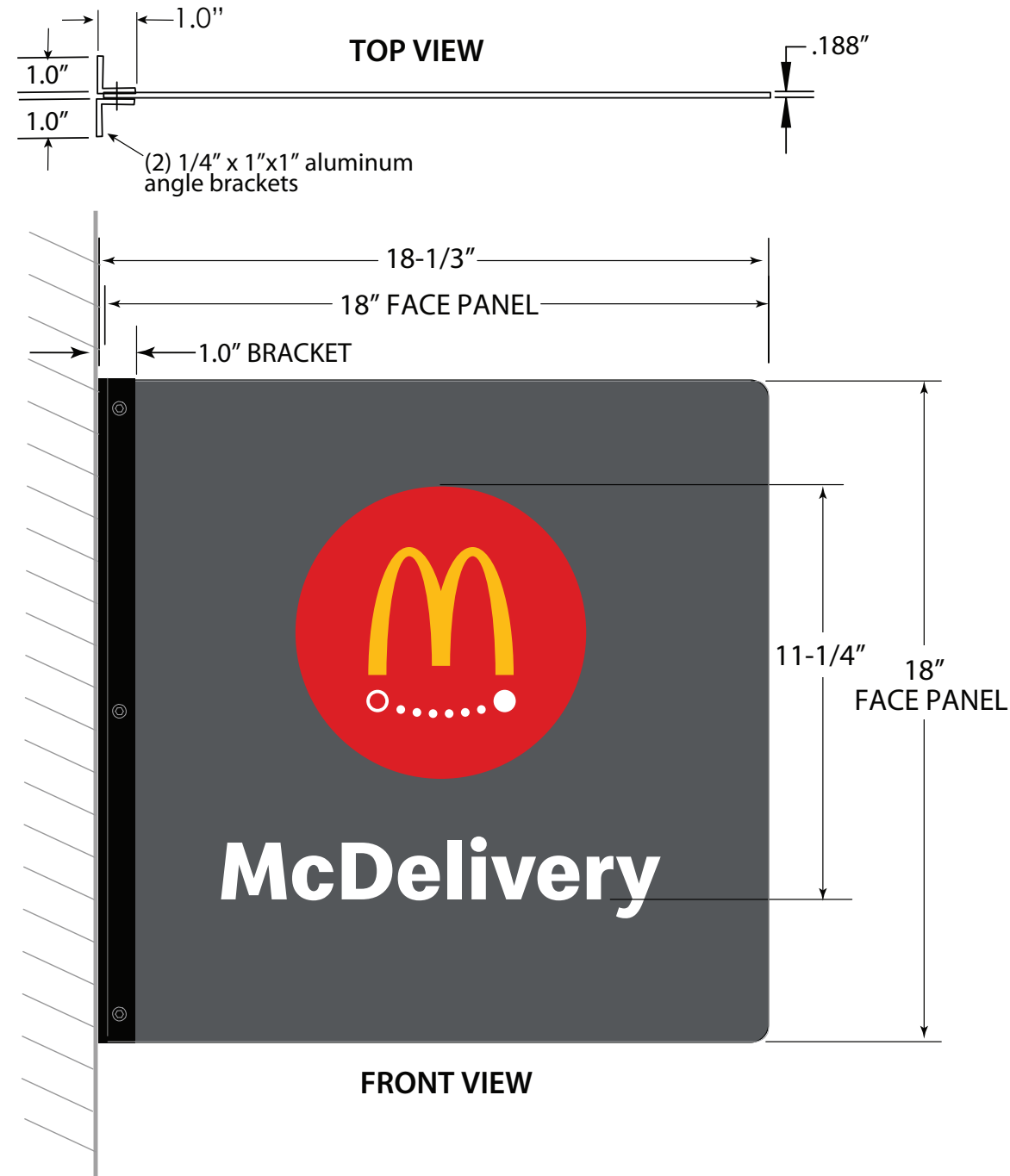
White vinyl letters

PMS 132C Yellow vinyl square with number cut out



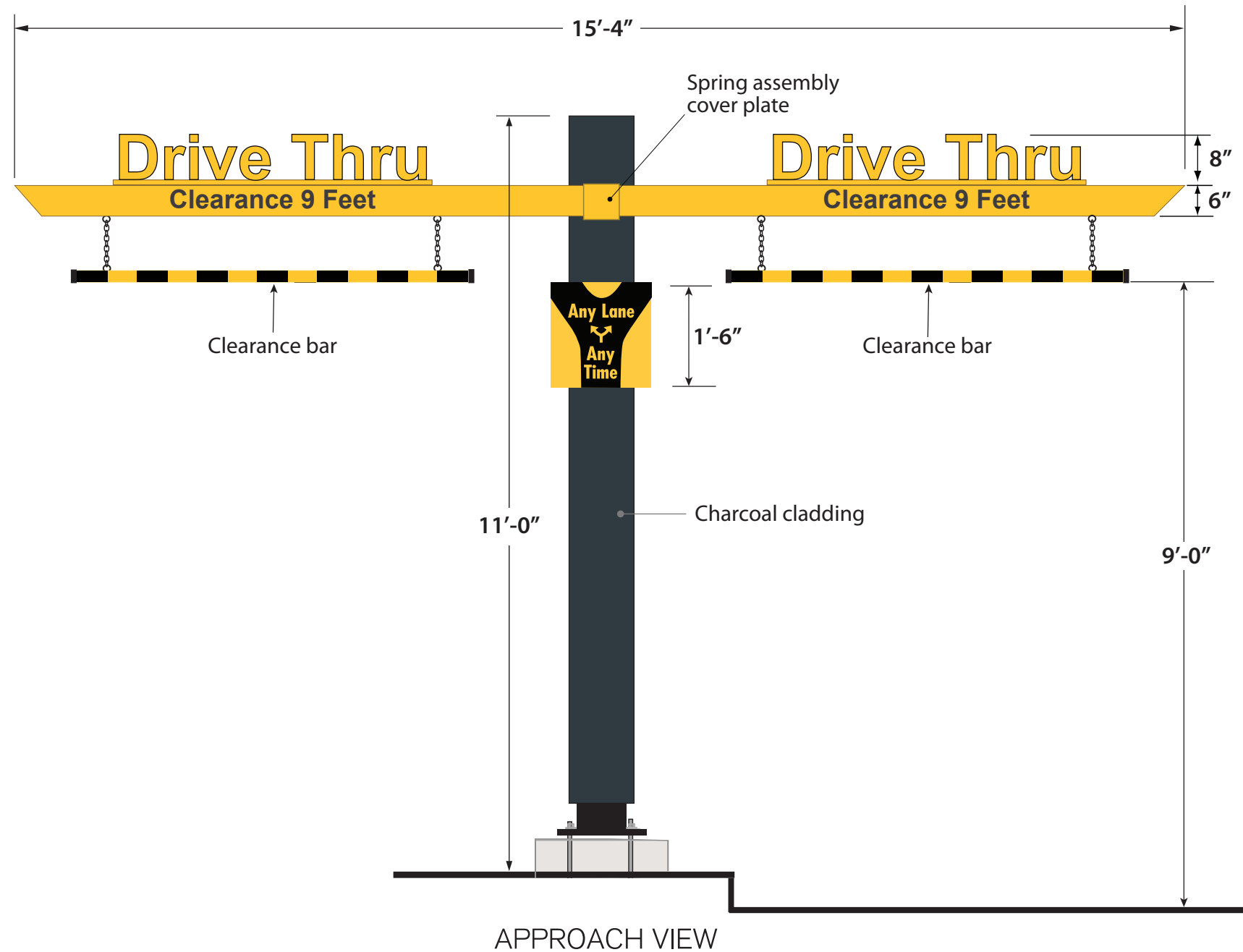
SIGN DETAILS:

Non-illuminated double-sided face and mounting bracket
 Next Gen charcoal with vinyl Mobil Order graphic



SIGN DETAILS:

Non-illuminated double-sided face and mounting bracket
 Next Gen charcoal with vinyl McDelivery graphic



SIGN DETAILS:

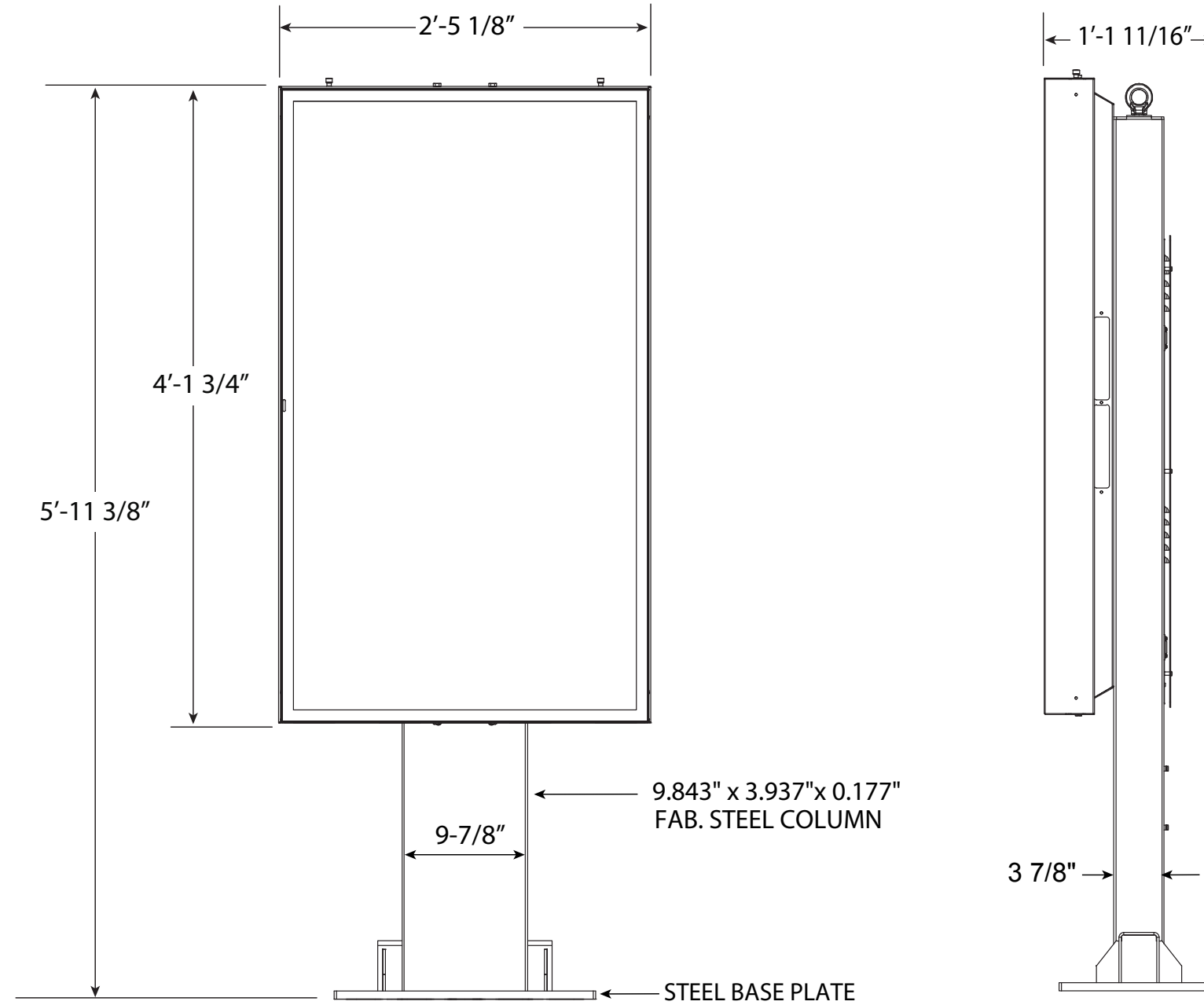
Non-illuminated clearance sign with spring loaded clearance arms

Clearance copy to be black vinyl

Adjustable PMS 123C Yellow and black bang bar

Sintra "Drive Thru" letters with reflective PMS 123C Yellow vinyl decal

PMS 123C Yellow and black "Any Lane Any Time" face

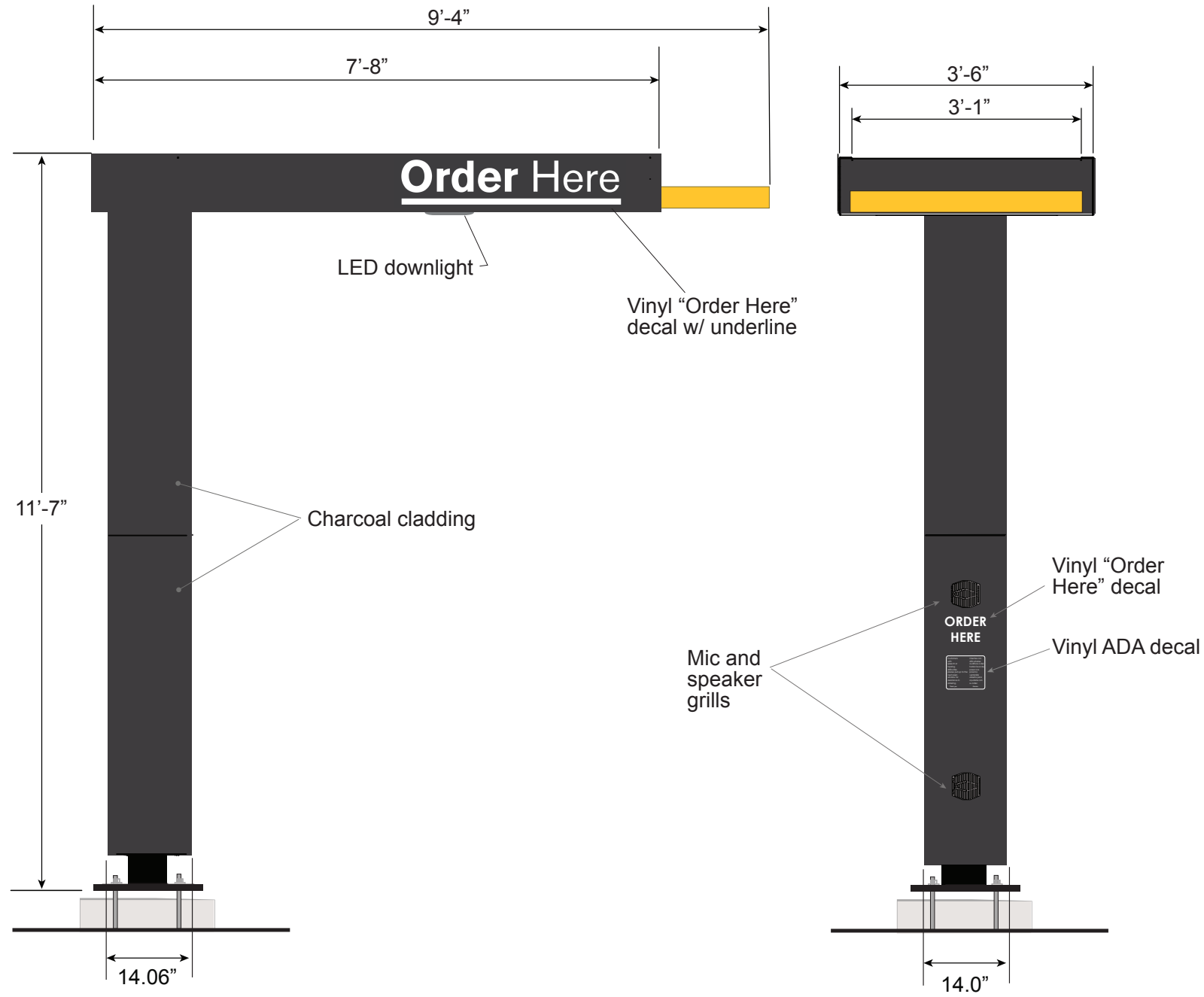


ODPB DESIGNED BY COATES



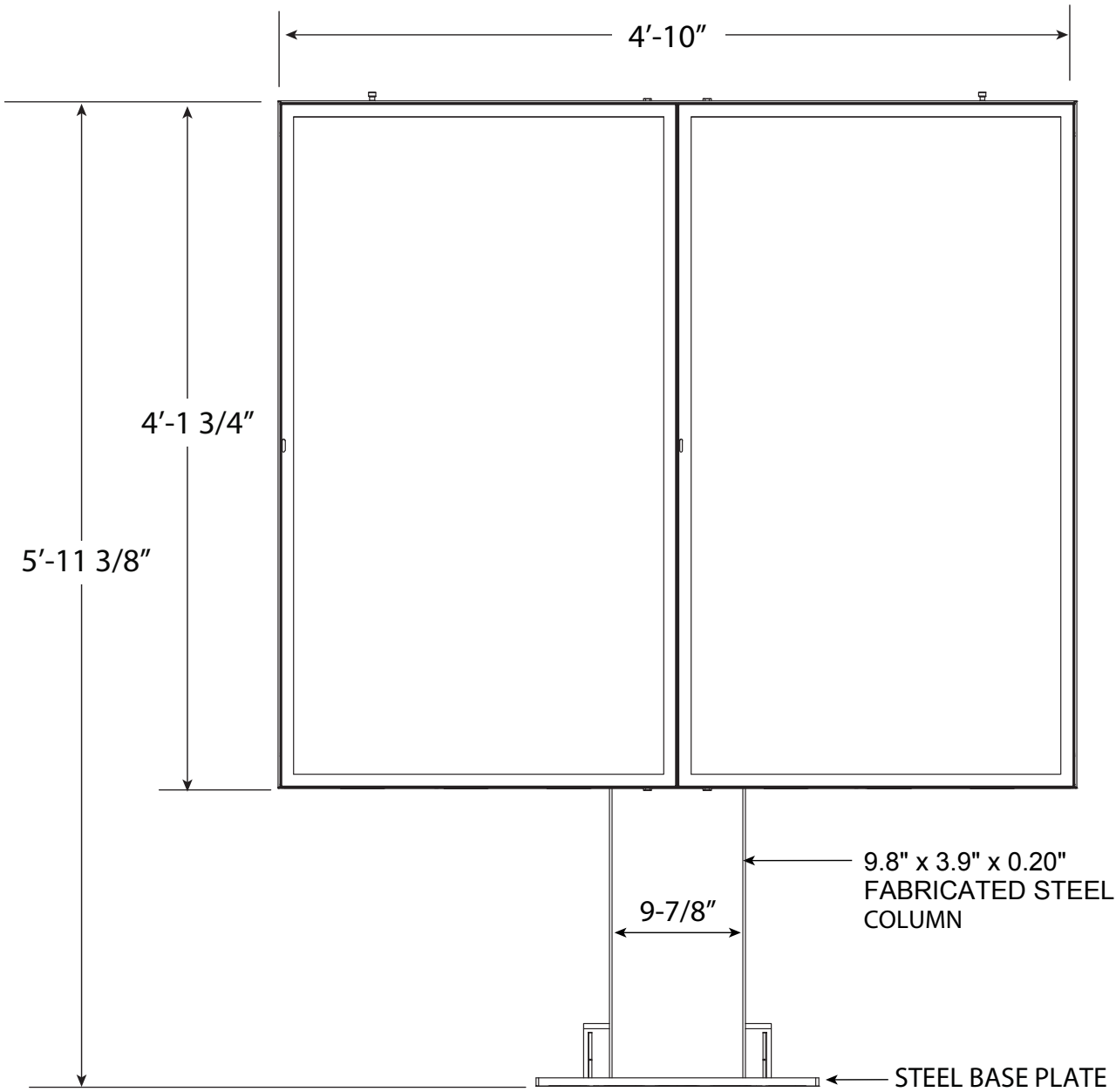
10 SQUARE FEET



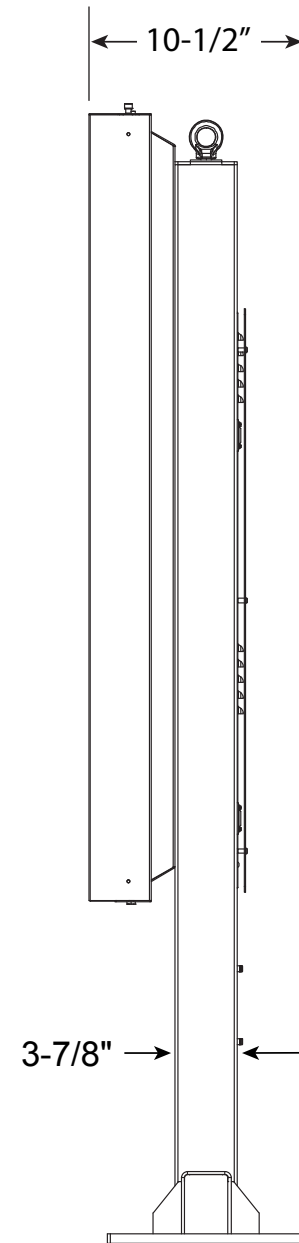


SIGN DETAILS:

- LED illuminated order canopy and cladding
- Next Gen Charcoal with PMS 123C Yellow accents
- Reflective White vinyl Order Here letters
- Audio provided by others

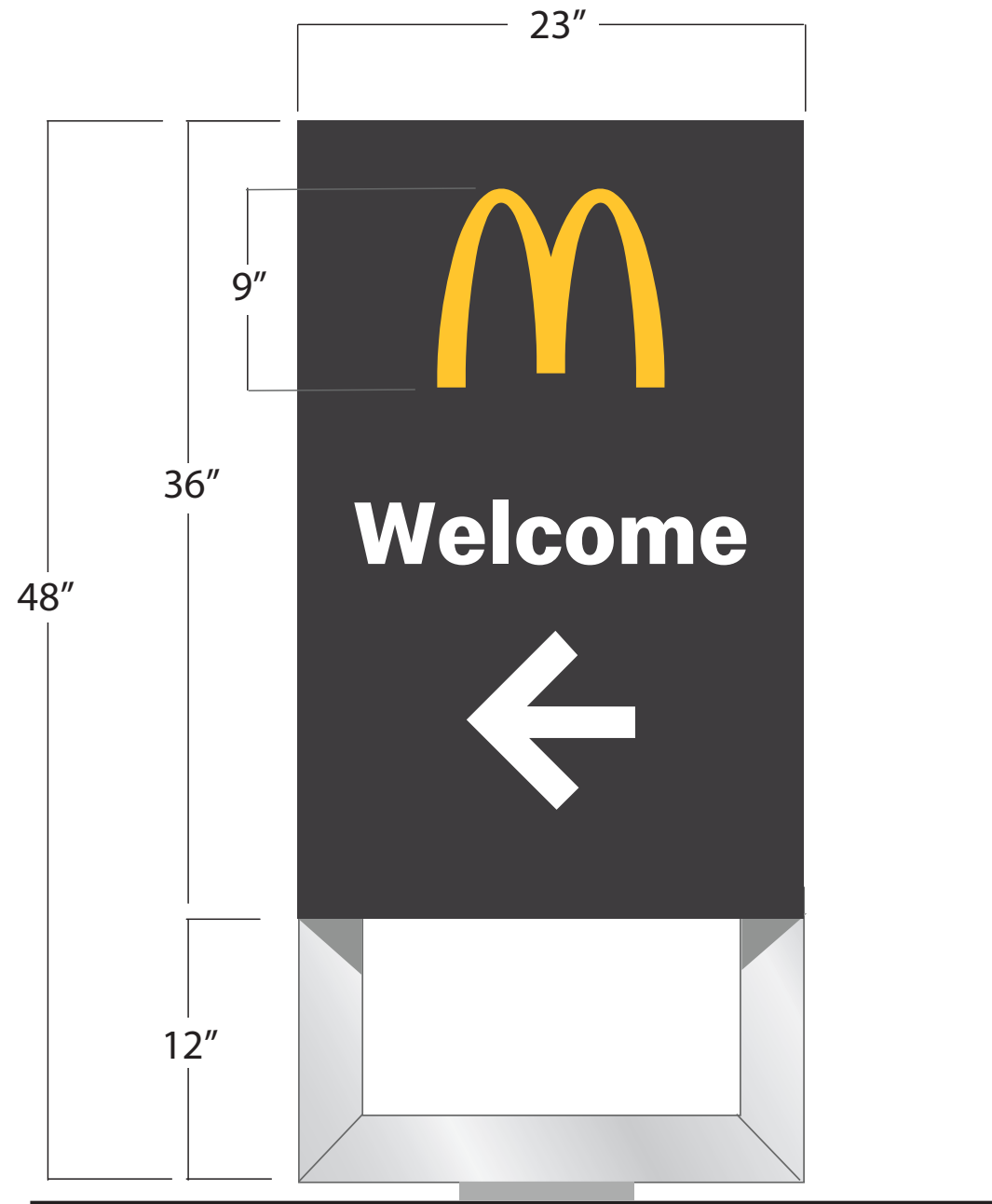


ODMB DESIGNED BY COATES



20 SQUARE FEET





Directional with Arch

SIGN DETAILS:

- Routed aluminum Next Gen Charcoal faces and Next Gen Silver frame
- LED illuminated letters, arrow, and Arch logo
- White letters and arrow, PMS 123C Yellow Arch



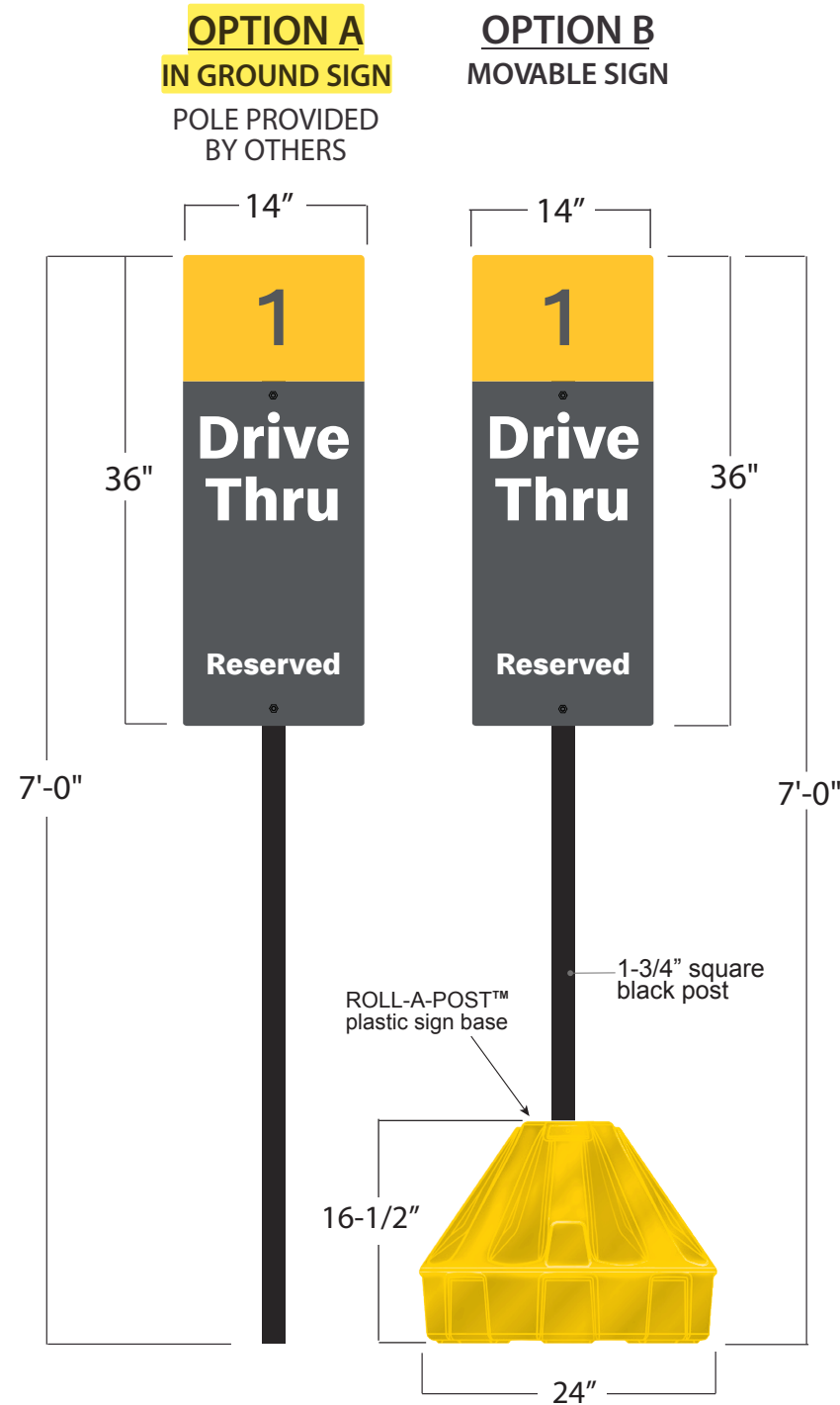
Directional with Arch

SIGN DETAILS:

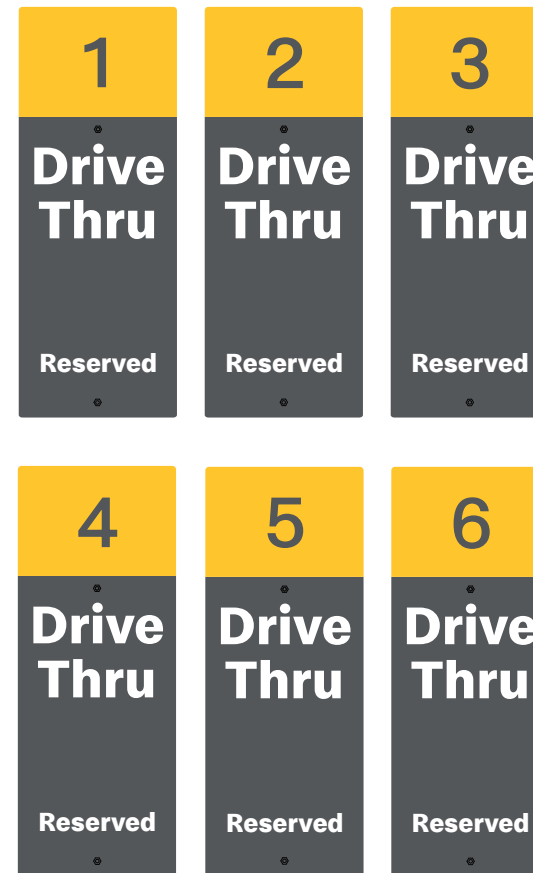
Routed aluminum Next Gen Charcoal faces and Next Gen Silver frame

LED illuminated letters and Arch logo

White letters and arrow, PMS 123C Yellow Arch

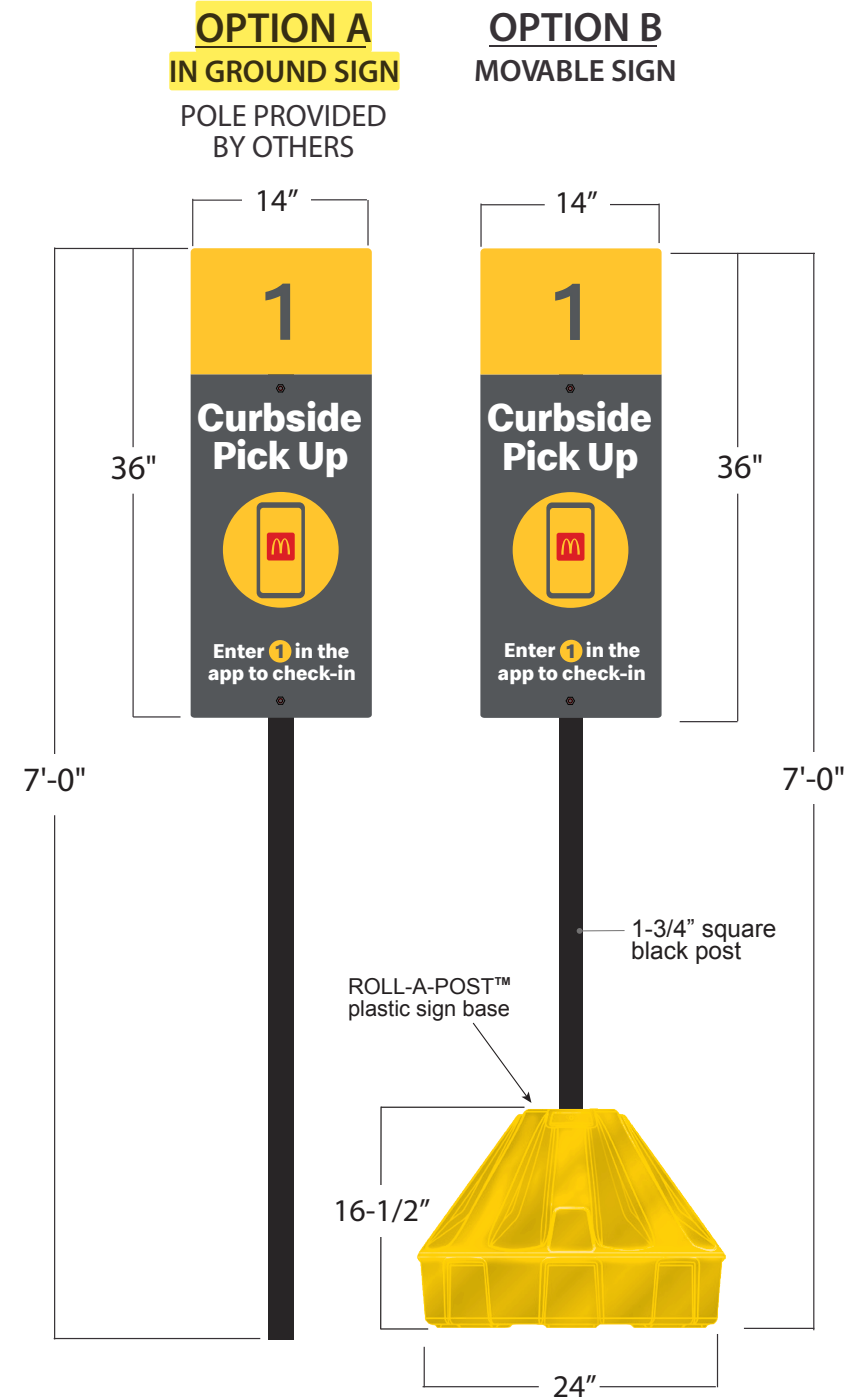


FACE OPTIONS



SIGN DETAILS:

- Non-illuminated ACM panel
- Next Gen Charcoal with matte finish screened copy and graphics
- Reflective PMS123C Yellow vinyl number square
- Shown with yellow ROLL-A-POST™ and black plastic post, sold separately

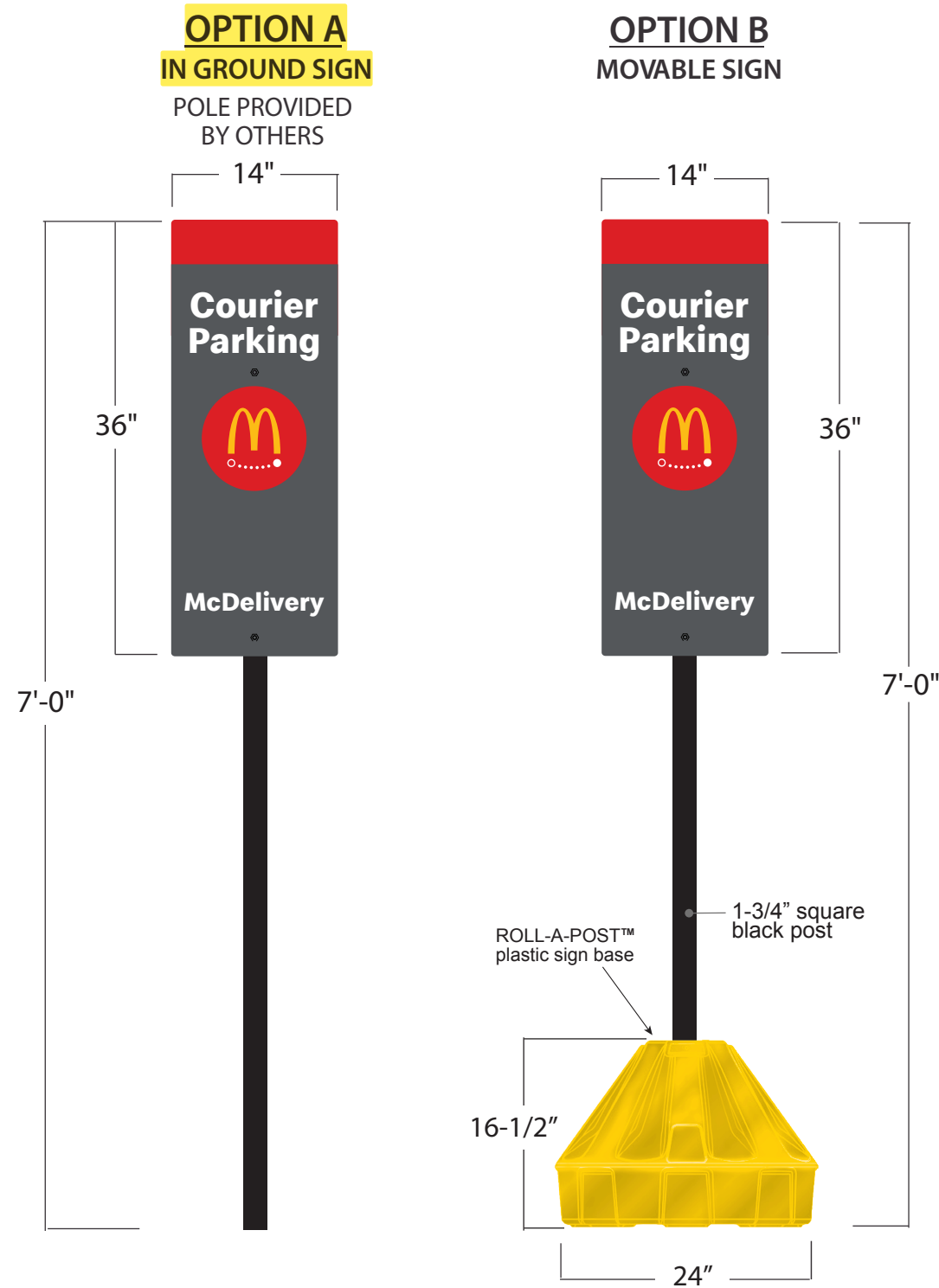


FACE OPTIONS



SIGN DETAILS:

- Non-illuminated ACM panel
- Next Gen Charcoal with matte finish screened copy and graphics
- Reflective PMS123C Yellow vinyl number square
- Shown with yellow ROLL-A-POST™ and black plastic post, sold separately



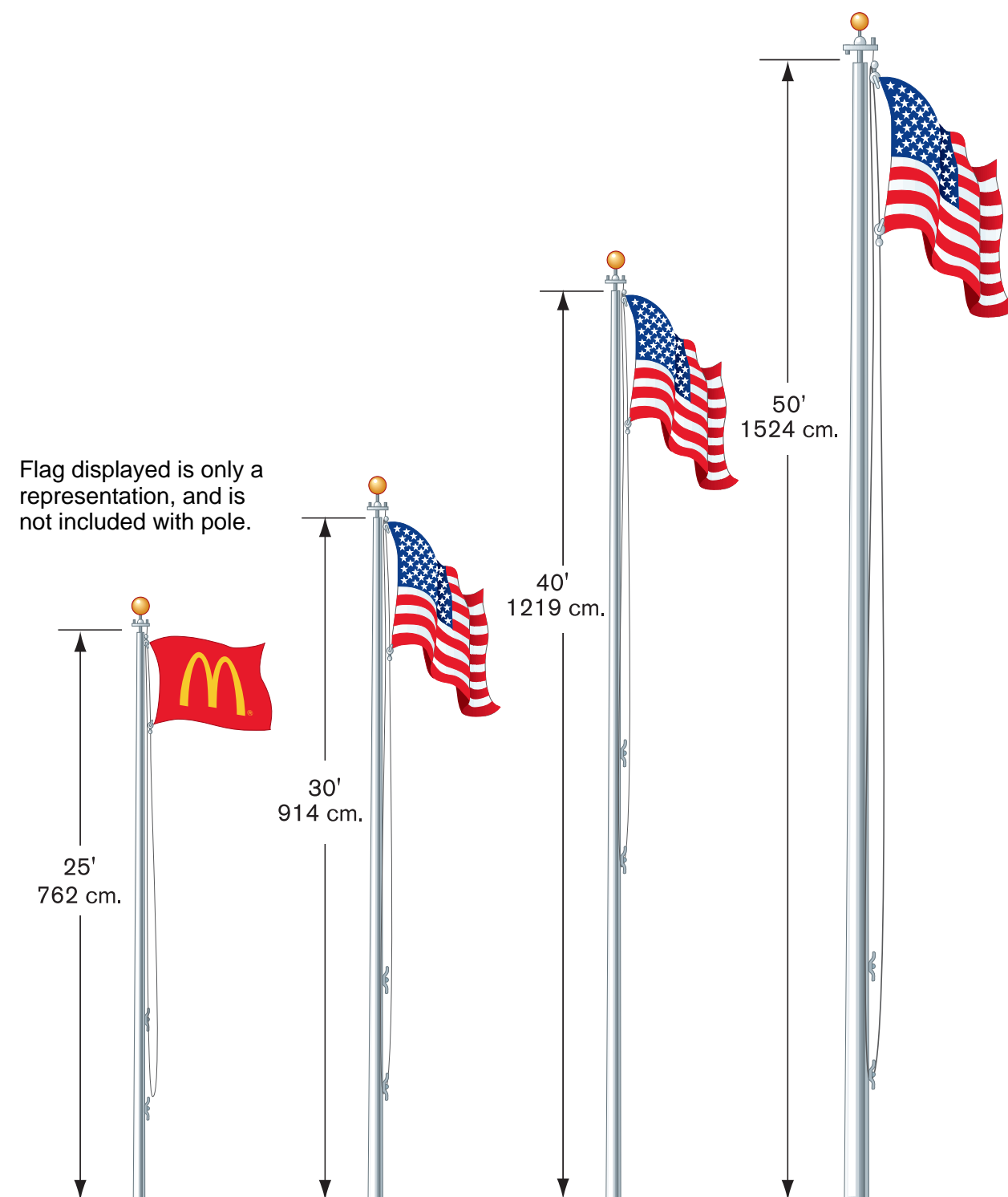
SIGN DETAILS:

Non-illuminated ACM panel

Next Gen Charcoal with matte finish screened copy and graphics

Shown with yellow ROLL-A-POST™ and black plastic post, sold separately

Flag Poles



Available Heights: 25' (762 cm.)
 30' (914 cm.)
 40' (1219 cm.)
 50' (1524 cm.)

Construction: Spun aluminum

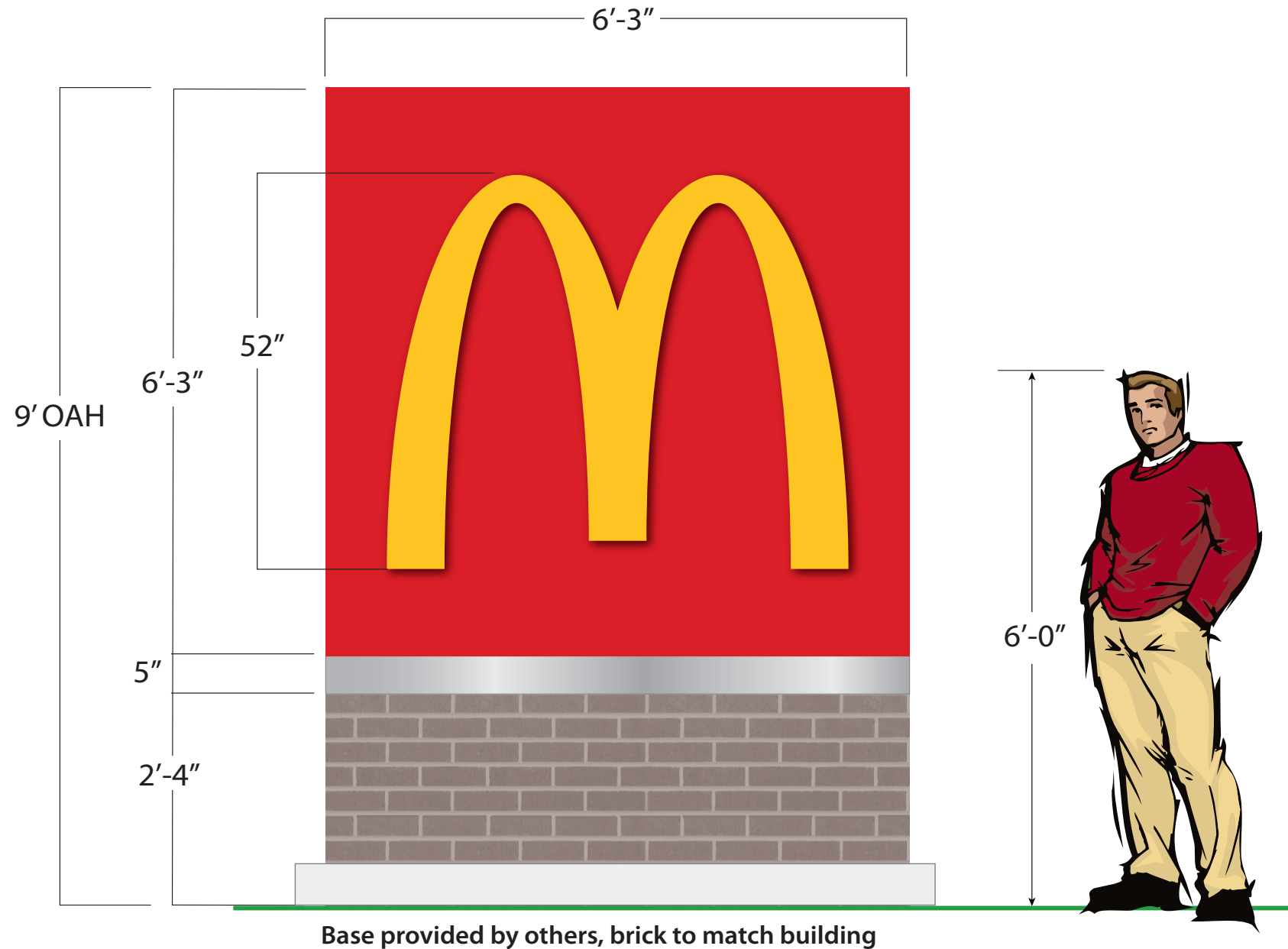
Includes: Halyard, rope and cleat

Max. allowable sq. ft. of flag: (flag not included)
 25' - 40 sq. ft. 5' x 8' flag
 30' - 60 sq. ft. 6' x 10' flag
 40' - 96 sq. ft. 8' x 12' flag
 50' - 150 sq. ft. 10' x 15' flag

Other: • 25', 30', 40' AND 50' flag poles- standard with ball top.



6'-3" x 6'-3" Next Gen Monument Sign, 9' OAH

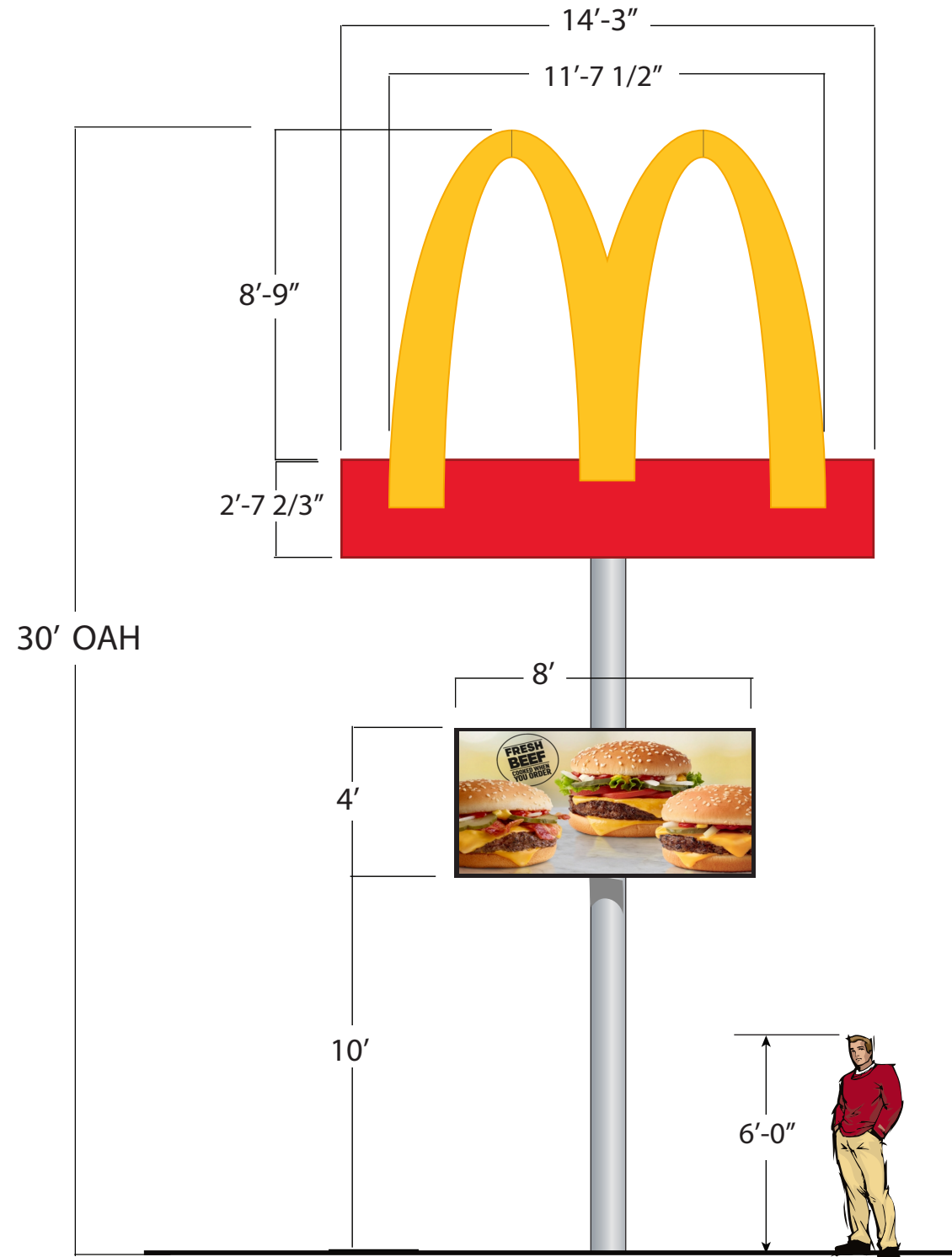


SIGN DETAILS:

- Routed aluminum faces with LED illuminated Arch logo
- Next Gen Red cabinet and PMS 123C Yellow Arch
- 5" Next Gen Silver band
- Base Height: 2'-4" (Not including silver band)
- Brick to match building similar to SW7019 Gauntlet Gray
- Base provided by others

**N. 12th Street
39 sq ft**

11'-6" Next Gen Highway Sign w/ 4'x8' EMC, 30' OAH



11'-6" Next Gen Hwy Sign w/ 4' x 8' EMC, 30' OAH

LED illuminated sign and Arches
 Next Gen Red and PMS 123C Yellow polycarbonate faces
 4' x 8' full color EMC displays, back to back on center pole
 EMC to be installed 10' from grade to bottom of sign

Erie Avenue
Sign: 164.33 sq ft
EMC: 32 sq ft
Total: 196.33 sq ft