

**SITE PLAN - AERIAL VIEW**



**PSCO KIEFFER**  
BRINGING THE WORLD'S BRANDS TO LIFE  
a Philadelphia Sign Company

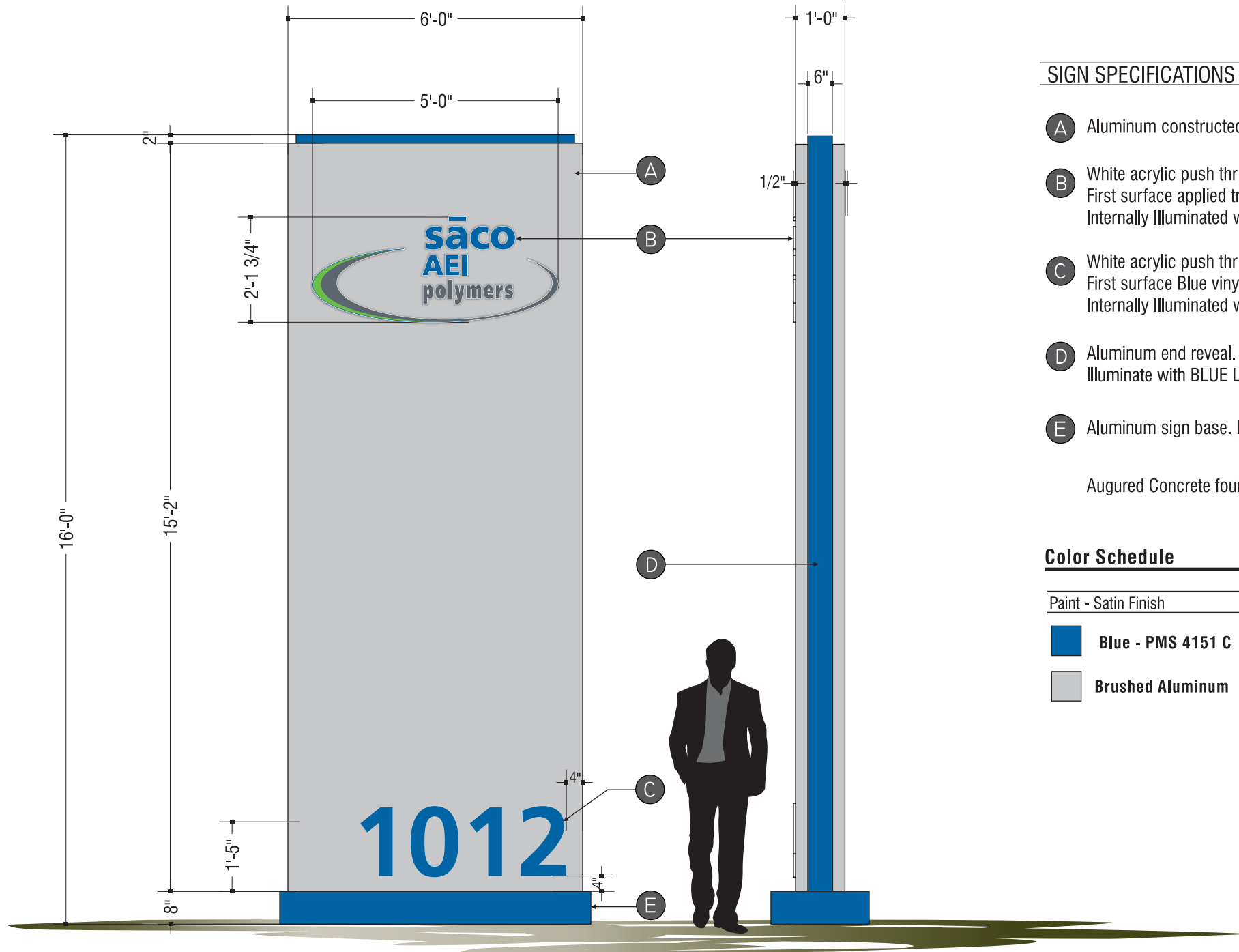
ACCOUNT: SACO AEI Polymers  
 LOCATION: 1012 S. 22nd Street - Sheboygan, WI  
 ACCT. REP: Mike Mele DESIGNER: MSO  
 DATE: 9/17/25  
 COMPANION FILES: \_\_\_\_\_

REVISIONS:	INITIALS & DATE:
<b>A</b> Revised site plan.	MAK 1/28/26
<b>B</b> Delete S2, revise orientation of S1 to 45 degrees to right.	MAK 2/17/26
<b>C</b> _____	_____
<b>D</b> _____	_____
<b>E</b> _____	_____
<b>F</b> _____	_____
<b>G</b> _____	_____
<b>H</b> _____	_____

This is an original unpublished drawing submitted for use in connection with a project being planned for you by PSCO Kieffer. It is not to be reproduced, copied or exhibited in any fashion without the written permission of PSCO Kieffer.

Phone: 920.458.4394  
pscosigngroup.com

**SITE PLAN**



**S/F Illuminated Monument Sign**

Scale: 3/8" = 1'-0"

**SIGN SPECIFICATIONS**

- A** Aluminum constructed sign cabinet. Paint Brushed Aluminum.
- B** White acrylic push thru copy. 1/2" projection from face. First surface applied translucent printed vinyl. Internally illuminated with white LED modules.
- C** White acrylic push thru copy. 1/2" projection from face. First surface Blue vinyl. Internally illuminated with white LED modules.
- D** Aluminum end reveal. Paint Blue. Illuminate with BLUE LED to create accent lighting on sign ends.
- E** Aluminum sign base. Paint blue.

Augured Concrete foundation. Per engineering.

**Color Schedule**

Paint - Satin Finish	Vinyl
Blue - PMS 4151 C	Blue - PMS 4151 C
Brushed Aluminum	Green PMS 360 C
	3M 3630-61 Slate Gray Gray PMS 431 C
	Address
	3M 3630-22 Black



**Proposed Day**



**Night Time Illumination**