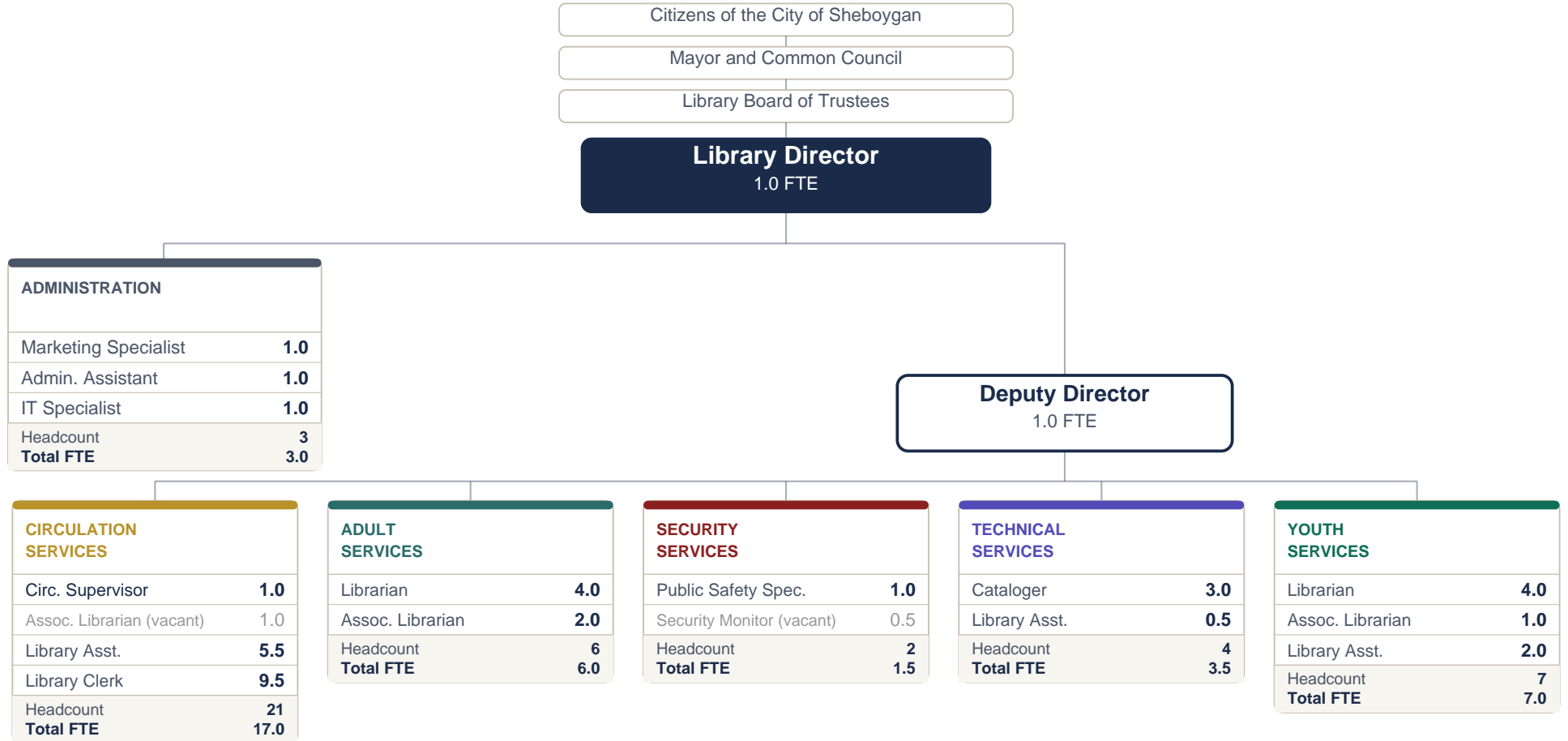


TABLE OF ORGANIZATION — PROPOSED

Mead Public Library

City of Sheboygan



Organization summary

Team	Full-time		Part-time		Total	
	Count	FTE	Count	FTE	Count	FTE
Administration (incl. Director & Deputy Dir.)	5	5.0	—	—	5	5.0
Adult Services	6	6.0	—	—	6	6.0
Circulation Services (1 vacancy)	6	6.0	14	10.0	21	17.0
Security Services (1 vacancy)	1	1.0	1	0.5	2	1.5
Technical Services	3	3.0	1	0.5	4	3.5
Youth Services	7	7.0	—	—	7	7.0
Organization total	28	28.0	16	11.0	45	40.0

● FTE based on scheduled hours (80 hrs = 1.0 FTE, 40 hrs = 0.5 FTE).