

PROJECT INFORMATION

PROPOSED COFFEE SHOP FOR:  
**7 BREW SHEBOYGAN**  
3715 WASHINGTON AVE • SHEBOYGAN, WI 53081

PROFESSIONAL SEAL

SHEET DATES

ISSUED FOR APPROVAL

IFA MAY 5, 2026

JOB NUMBER

260004700

SHEET NUMBER

**A2.2**

EXTERIOR ELEVATION KEYNOTES

- PRE-ENGINEERED ALUMINUM CANOPY BY OTHERS; REF STRUCTURAL.
- SURFACE-MOUNTED LED NEON FLEX LIGHTING AS INDICATED (SHOWN DASHED), TYP; REF ELECTRICAL.
- MOUNTED SPEAKER SYSTEM; REF SYSTEMS PLAN.
- ADDRESS NUMBERS TO BE 8" TALL x 2" BRUSH STROKE.
- ELECTRICAL EQUIPMENT, PAINTED TO MATCH BUILDING; REF ELECTRICAL.
- FROST PROOF FLUSH HOSE BIB.
- EXTERIOR WEATHER-PROOF OUTLET; REF ELECTRICAL.
- THROUGH WALL SCUPPER ROOF DRAIN.
- SURFACE-MOUNTED LIGHTED SIGN BOX.
- SAMSUNG DIGITAL DISPLAYS; INSTALLED IN FIELD BY IT PROVIDER; CHASE FOR DATA CABLE INSTALLED AT BUILDING MANUFACTURING FACILITY.
- GUARDRAIL; 3' - 6" ABOVE ATTIC FLOOR.
- HVAC EQUIPMENT.
- OUTLINE OF MECHANICAL UNIT BEYOND.
- PREFABRICATED COOLER BY NATIONAL MODULAR MANUFACTURING; COORD. LOCATION AND SPECS WITH CIVIL AND STRUCTURAL.
- CANOPY HEATER.
- 36" COOLER DOOR.
- COOLER LOCK AND CONTROLS.
- KNOX BOX.
- 1/4" THICK ACRYLIC SIGNAGE APPLIED TO SIDING WITH VH DOUBLE SIDE TAPE.
- ROUND STOREFRONT SIGN; SUPPLIED AND INSTALLED BY SIGN CONTRACTOR.
- ILLUMINATED STOREFRONT SIGNAGE BY SIGN CONTRACTOR.
- EXPOSED DOWNSPOUT, GALVANIZED, PAINTED; CONNECT TO SUB-GRADE STORM WATER COLLECTION SYSTEM; REF CIVIL.
- PAINTED STRUCTURAL CANOPY COLUMN; RAINWATER DOWNSPOUT WITHIN; CONNECT BASE OF CANOPY COLUMN DOWNSPOUT TO STORMWATER MANAGEMENT SYSTEM; REF CIVIL.
- PAINTED STRUCTURAL CANOPY COLUMN; REF CIVIL.

EXTERIOR ELEVATION MATERIALS

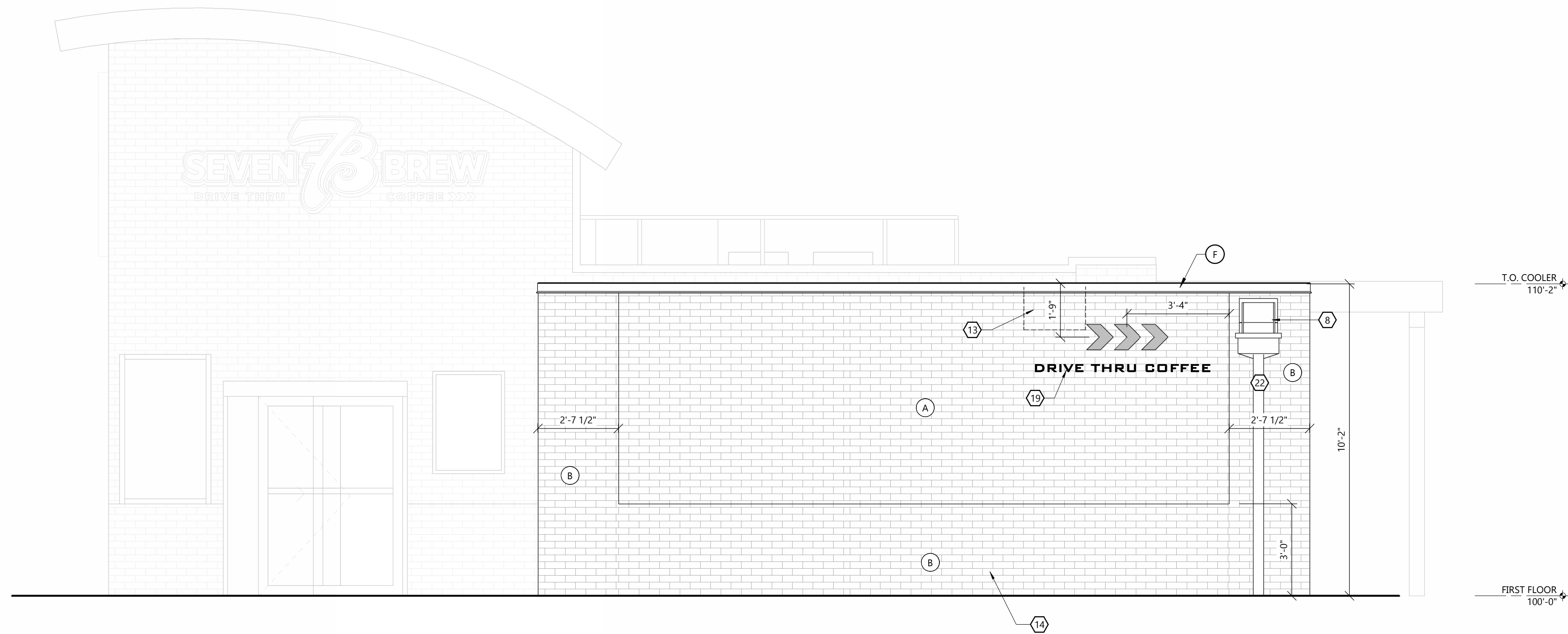
- A. FIBER CEMENT BRICK SIDING (BRK-2).
- B. FIBER CEMENT BRICK SIDING (BRK-1).
- C. BRAKE METAL FASCIA (MP-2).
- D. SOFFIT PANELS (MP-2).
- E. STANDING SEAM ROOF PANELS (MP-2).
- F. METAL BRAKE CAP (MP-3).
- G. CLEAR ANODIZED ALUMINUM (MP-4).

FINISH MATERIALS SCHEDULE

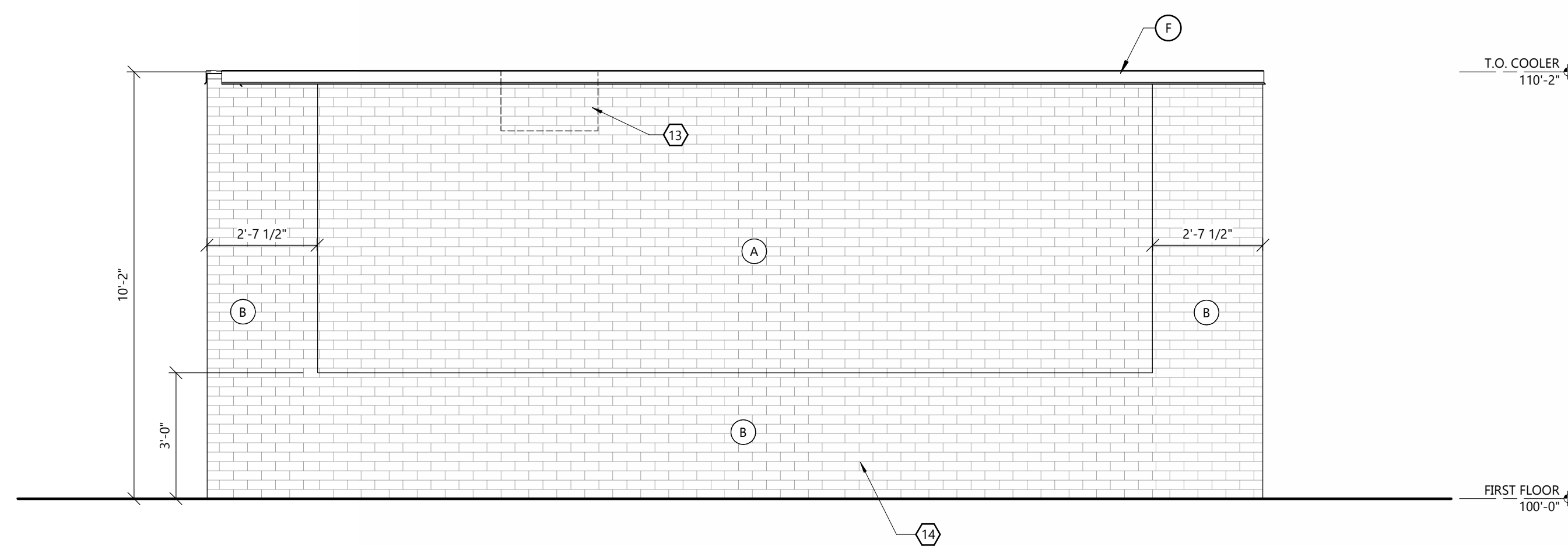
SYMBOL	ITEM	DESCRIPTION	REMARKS
BRK-1	FIBER CEMENT PANEL SIDING	BRAND: NICHHA COLOR: MIDNIGHT STYLE: MODERN BRICK	EXTERIOR WAINSCOT AND REAR WALL NOTES: a, d
BRK-2	FIBER CEMENT PANEL SIDING	BRAND: NICHHA COLOR: SHALE BROWN STYLE: CANYON BRICK	EXTERIOR WALLS ABOVE WAINSCOT AND ATTIC REAR NOTES: b
FRP-1	FRP WALL COVERING	BRAND: NUDO FIBERLITE COLOR: WHITE STYLE: 4' x FULL HEIGHT x .090"	SERVICE AREA AND TOILET NOTES: c
MP-2	BRAKE METAL	BRAND: BERRIDGE COLOR: ROYAL BLUE STYLE: LOW SHEEN SMOOTH	REFLECTIVITY - .26 METAL ROOF AND CANOPIES NOTES: a
MP-3	BRAKE METAL	BRAND: BERRIDGE COLOR: ZINC GREY STYLE: LOW SHEEN SMOOTH	REFLECTIVITY - .39 METAL COPING AT REAR WALL NOTES: a
MP-4	BRAKE METAL	BRAND: BERRIDGE COLOR: ZINC GREY STYLE: LOW SHEEN SMOOTH	REFLECTIVITY - .39 METAL COPING AT SIDE WALLS NOTES: a
PT-1	PAINT	BRAND: SHERWIN WILLIAMS COLOR: "INDIGO" SW 6531 STYLE: EGG SHELL	CILING TRIMS AND MISC TRIMS NOTES: a, c
PT-2	PAINT	BRAND: SHERWIN WILLIAMS COLOR: "FIRST STAR" SW 7646 STYLE: SEMI-GLOSS	CILING, INTERIOR TOILET ROOM WALLS, DOORS AND FRAMES NOTES: a, c
VB-1	RESILIENT VINYL BASE	BRAND: AMARCO COLOR: LIGHT GRAY STYLE: PROTECT-ALL BASE	SERVICE AREA AND TOILET NOTES: a
VI-1	RESILIENT VINYL FLOORING	BRAND: AMARCO COLOR: LIGHT GRAY STYLE: PROTECT-ALL FLOORING	SERVICE AREA AND TOILET NOTES: a

FINISH MATERIALS SCHEDULE NOTES:

- SITE CONTRACTOR TO COORDINATE WITH PREFABRICATOR DIRECTLY TO DETERMINE SCOPE SPLIT OF ITEMS PROVIDED/INSTALLED/FINISHED WITHIN FABRICATION FACILITY VERSUS ON-SITE.
- PROVIDE COMPLETE ARCHITECTURAL SIDING SYSTEM AND ACCESSORIES, INCLUDING MATCHING MANUF. FABRICATED CORNERS, FLASHINGS, AND TRIMS. SIDING INSTALLATION PER MANUF. INSTALLATION INSTRUCTIONS.
- PROVIDE A MINIMUM OF TWO (2) COATS PAINT OVER ONE (1) COAT PRIMER ON ALL EXPOSED GYP BD IN SERVICE AREA AND TOILET.



1 EAST COOLER ELEVATION  
A2.2 SCALE: 3/8" = 1'-0"



2 WEST COOLER ELEVATION  
A2.2 SCALE: 3/8" = 1'-0"