

PROJECT LOCATION

SCALE: 1"=40'



REVISIONS:

DATE ISSUE

NOTICE TO BIDDERS  
BIDDERS SHALL REVIEW ALL DRAWINGS AND  
SPECIFICATION SECTIONS TO DETERMINE THE IMPACT OF  
OTHER SECTIONS OF WORK ON THEIR OWN WORK  
© 2024 ABACUS ARCHITECTS, INC.

MAY 2nd, 2025  
FACILITIES RENOVATION FOR  
VOLLRATH COMPANY LLC  
1236 NORTH 18th STREET, SHEBOYGAN, WI 53081  
1136A MICHIGAN AVE. SHEBOYGAN, WI 53081 | (920) 452-4444 | 640 N VEL R. PHILIPS AVE. SUITE 210, MILWAUKEE, WI 53203

PERMIT SET

DRAWN BY: MBS

CHECKED BY: JRV

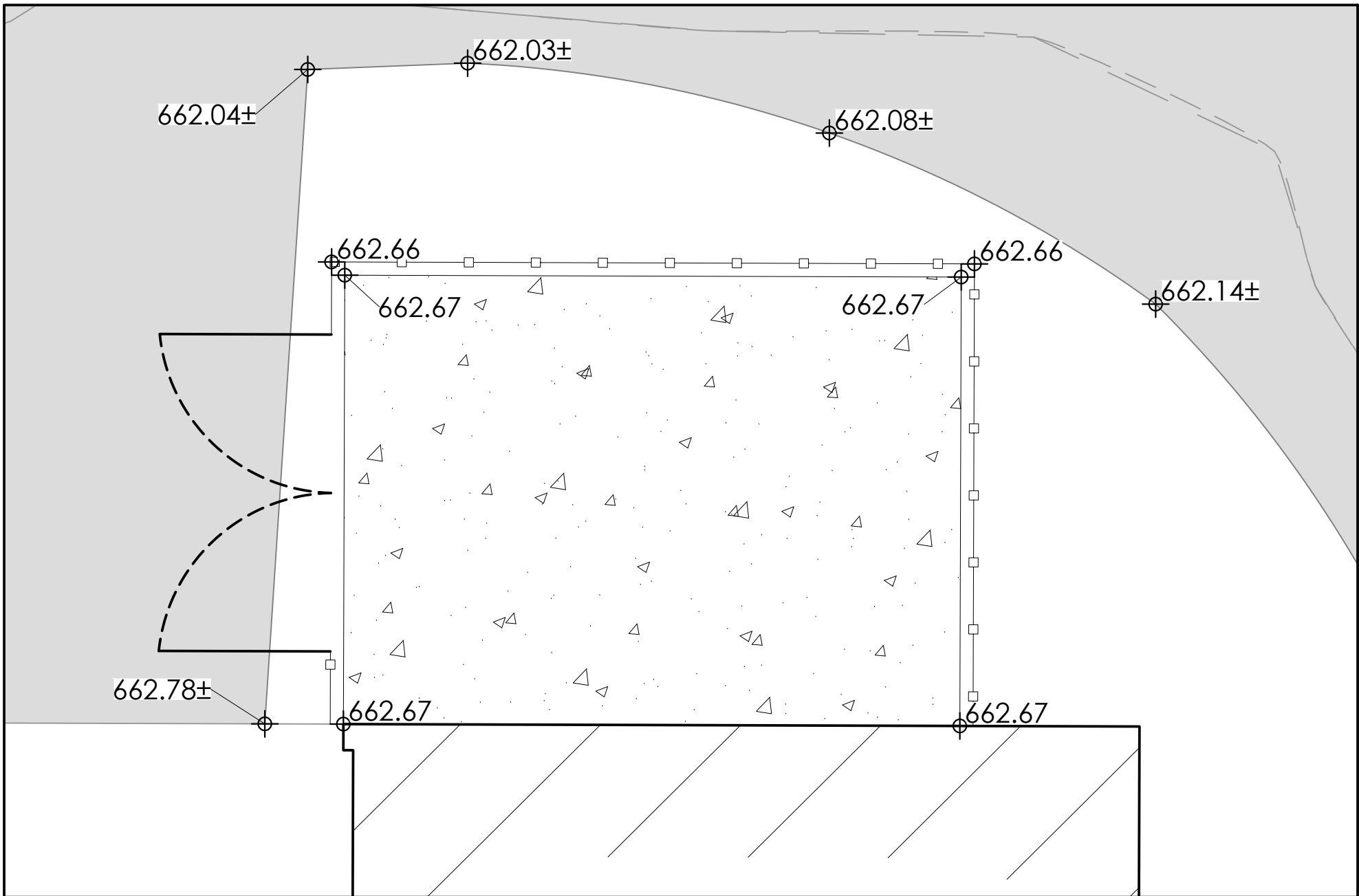
PROJECT  
LOCATION

A  
200A

PROJ. NO. 2024-93

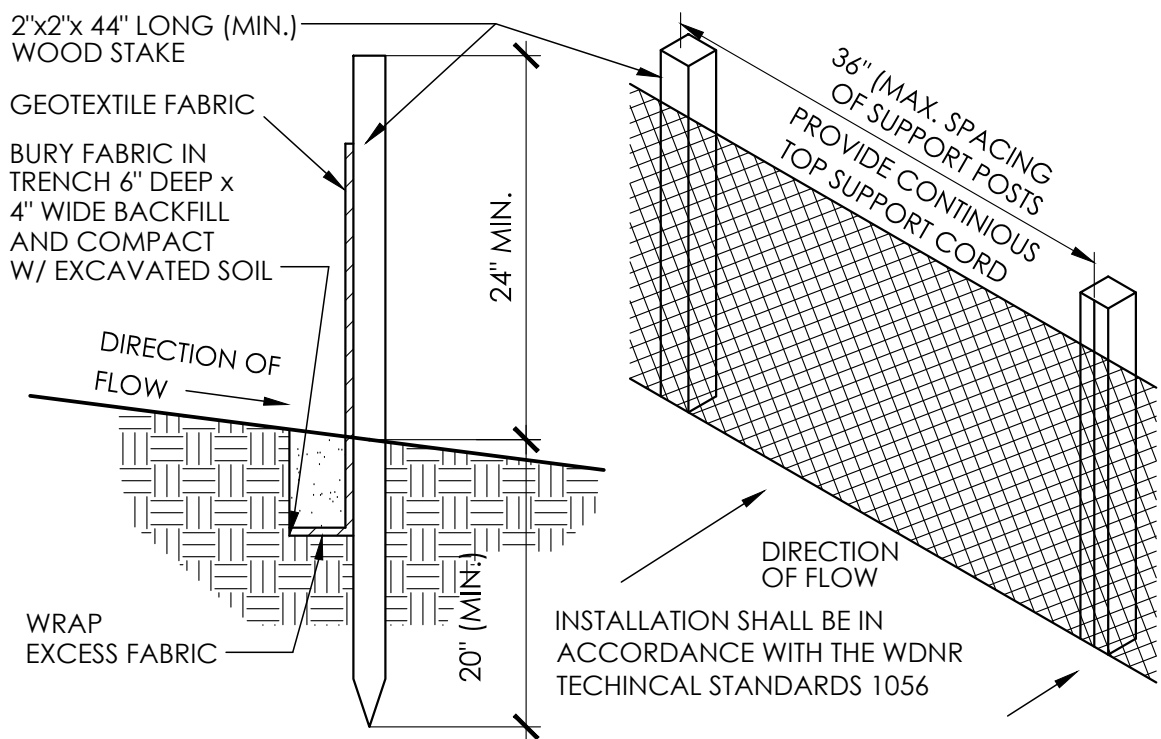




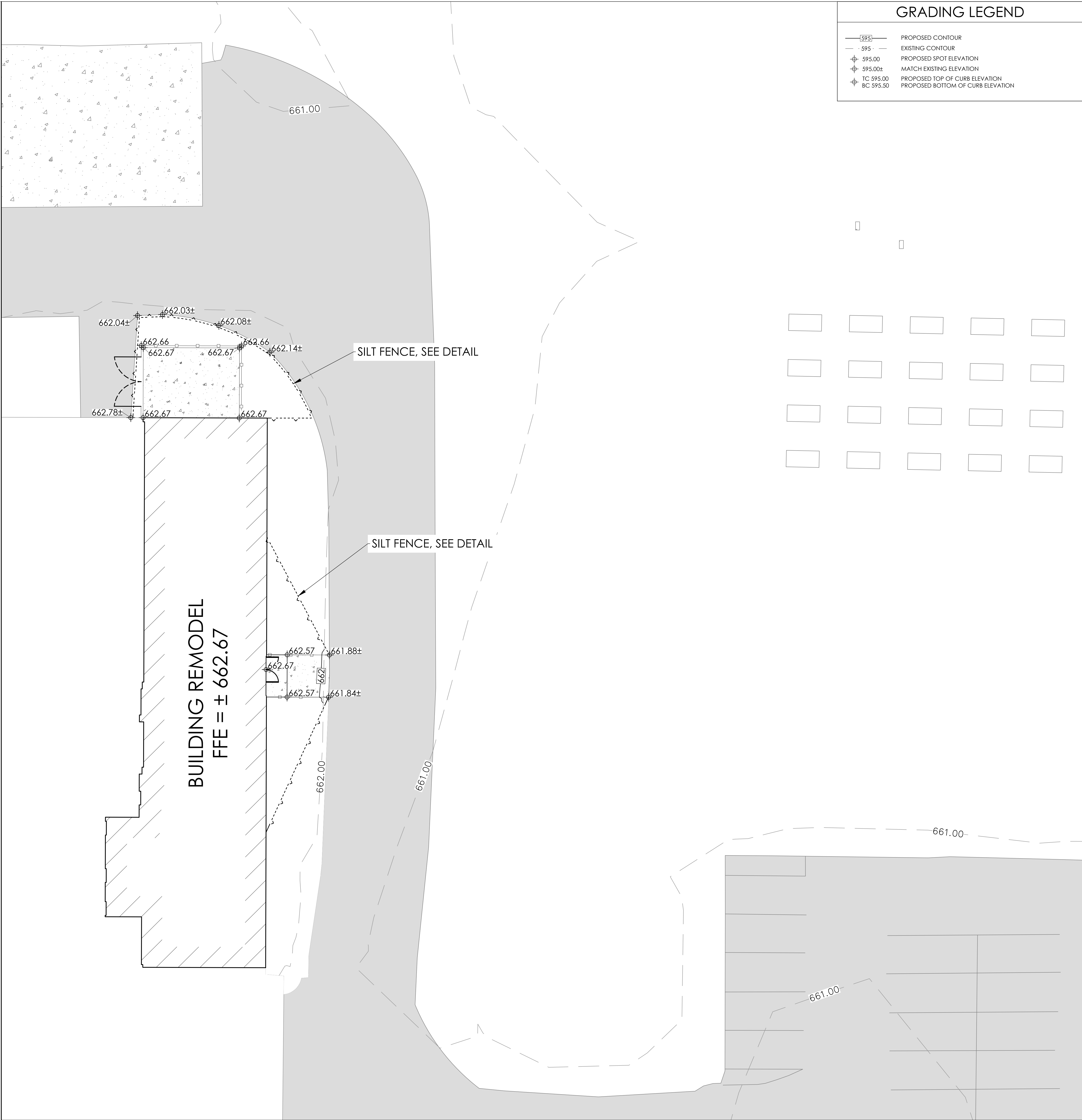


MECHANICAL CONCRETE PAD

SCALE: 1"=5'



SILT FENCE SECTION & DETAIL



GRADING LEGEND

|  |                                   |
|--|-----------------------------------|
|  | PROPOSED CONTOUR                  |
|  | EXISTING CONTOUR                  |
|  | PROPOSED SPOT ELEVATION           |
|  | MATCH EXISTING ELEVATION          |
|  | PROPOSED TOP OF CURB ELEVATION    |
|  | PROPOSED BOTTOM OF CURB ELEVATION |



REVISIONS:

| DATE | ISSUE |
|------|-------|
|------|-------|

NOTICE TO BIDDERS  
BIDDERS SHALL REVIEW ALL DRAWINGS AND SPECIFICATION SECTIONS TO DETERMINE THE IMPACT OF OTHER SECTIONS OF WORK ON THEIR OWN WORK  
© 2024 ABACUS ARCHITECTS, INC.

MAY 2nd, 2025  
FACILITIES RENOVATION FOR  
VOLLRATH COMPANY LLC  
1236 NORTH 18th STREET, SHEBOYGAN, WI 53081  
1135A MICHIGAN AVE. SHEBOYGAN, WI 53081 | (920) 452-4444 | 640 N VIL R. PHILIPS AVE. SUITE 210, MILWAUKEE, WI 53203

PERMIT SET

DRAWN BY: MBS

CHECKED BY: JRV

GRADING PLAN

A  
202A

PROJ. NO. 2024-93

GRADING PLAN

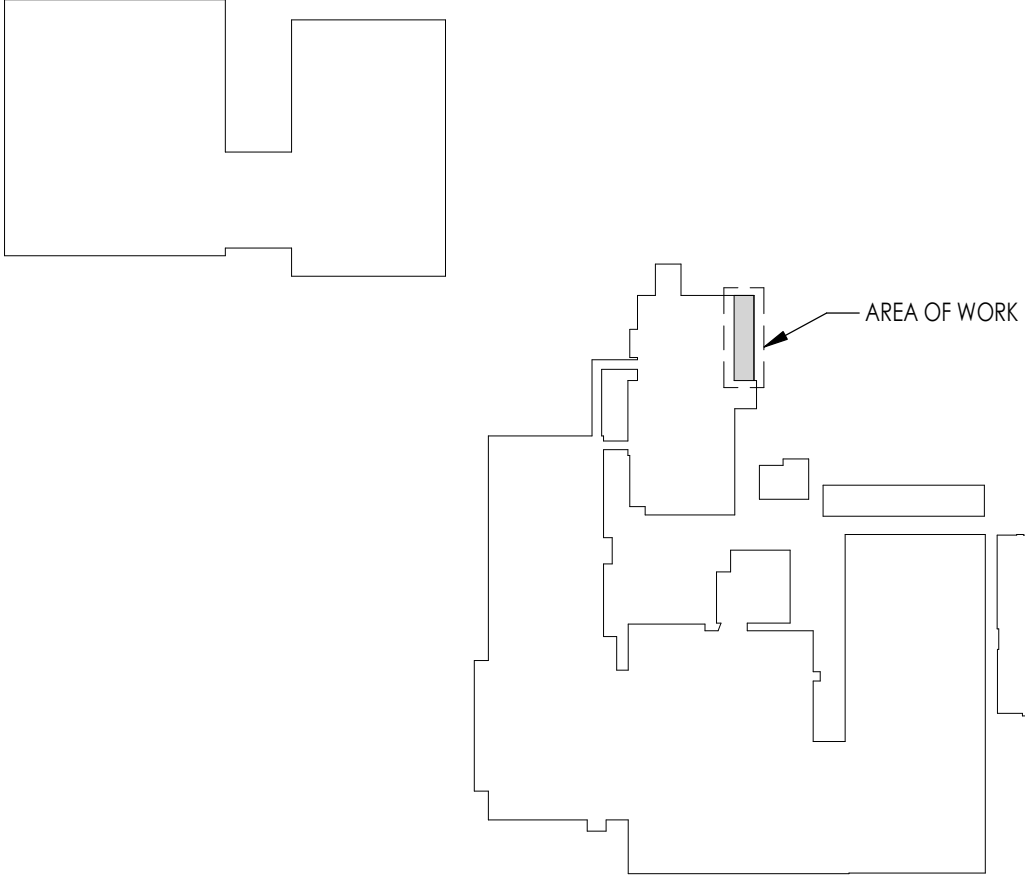
SCALE: 1"=10'





| SANITARY FIXTURE COUNT |  |
|------------------------|--|
| PROVIDED MALE:         | TOILETS = 5<br>URINALS = 5<br>LAVATORIES = 8 |
| PROVIDED FEMALE:       | TOILETS = 3<br>LAVATORIES = 8                |
| PROVIDED SINGLE-USER:  | TOILETS = 3<br>LAVATORIES = 3                |

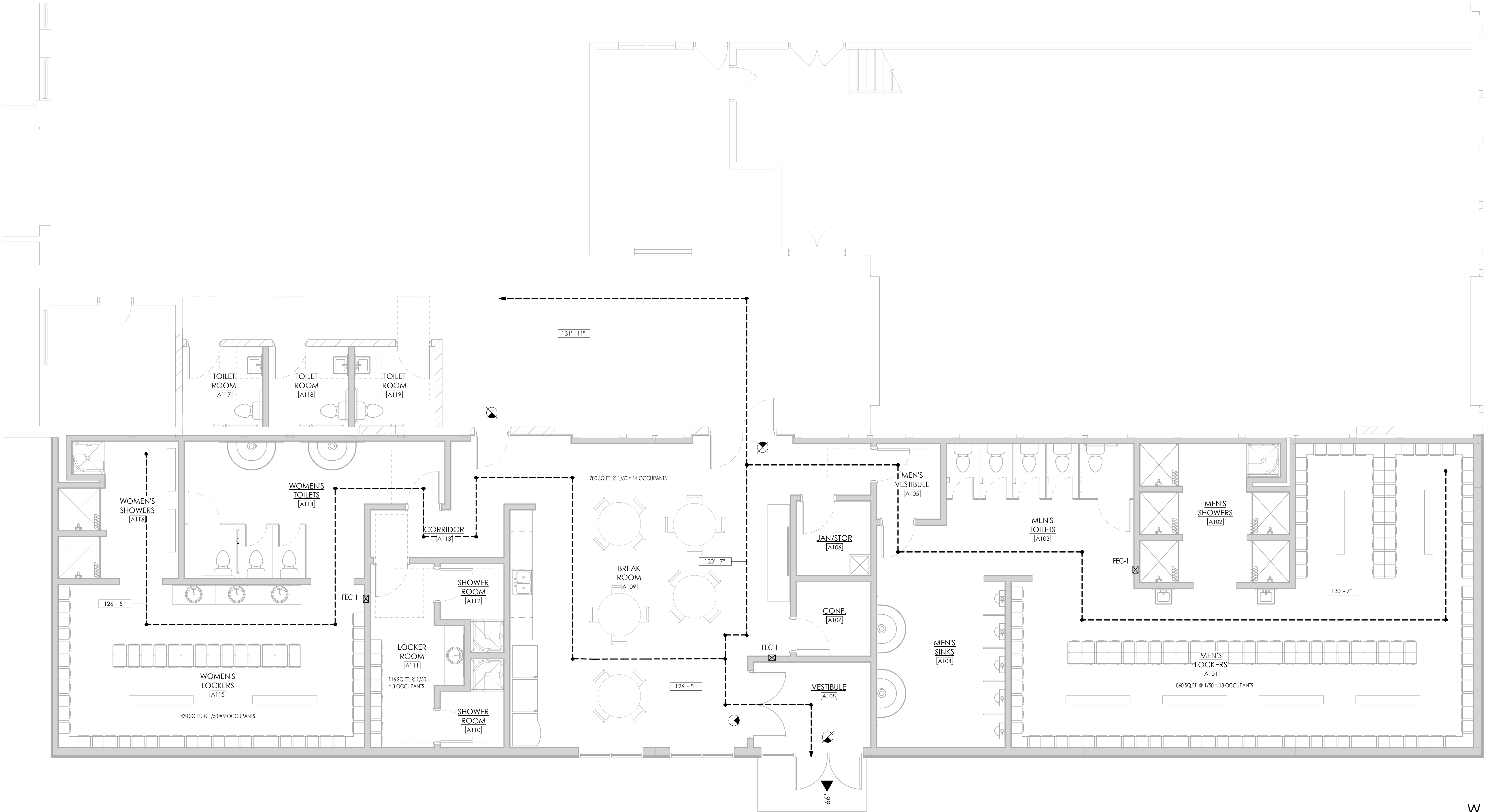
| LIFE SAFETY PLAN LEGEND |                                |
|-------------------------|--------------------------------|
|                         | PATH OF TRAVEL / DISTANCE      |
|                         | EXIT AND AVAILABLE EXIT INCHES |
|                         | FIRE EXTINGUISHER              |
|                         | FEC-1: FULLY RECESSED CABINET  |
|                         | FEC-2: SEMI-RECESSED CABINET   |
|                         | FEC-3: SURFACE MOUNTED CABINET |
|                         | EXIT LIGHT                     |



KEY PLAN

N  
W  
E  
S

NOTICE TO BIDDERS  
BIDDERS SHALL REVIEW ALL DRAWINGS AND  
SPECIFICATION SECTIONS TO DETERMINE THE IMPACT  
OF OTHER SECTIONS OF WORK ON THEIR OWN WORK  
© 2025 ABACUS ARCHITECTS, INC.



FIRST FLOOR LIFE SAFETY PLAN

SCALE: 1/4" = 1'-0"

W  
S  
N  
E

MAY 2nd, 2025  
EMPLOYEE ENTRANCE & LOCKER ROOM RENOVATION FOR  
VOLLRATH COMPANY LLC  
1236 NORTH 18th STREET, SHEBOYGAN WI 53081  
1135A MICHIGAN AVE, SHEBOYGAN, WI 53081 | (720) 452-4444 | 313 N. PLANKINTON AVE SUITE 208, MILWAUKEE, WI 53203

PERMIT SET

DRAWN BY: AJK  
CHECKED BY: KED

LIFE SAFETY PLAN

A  
301A

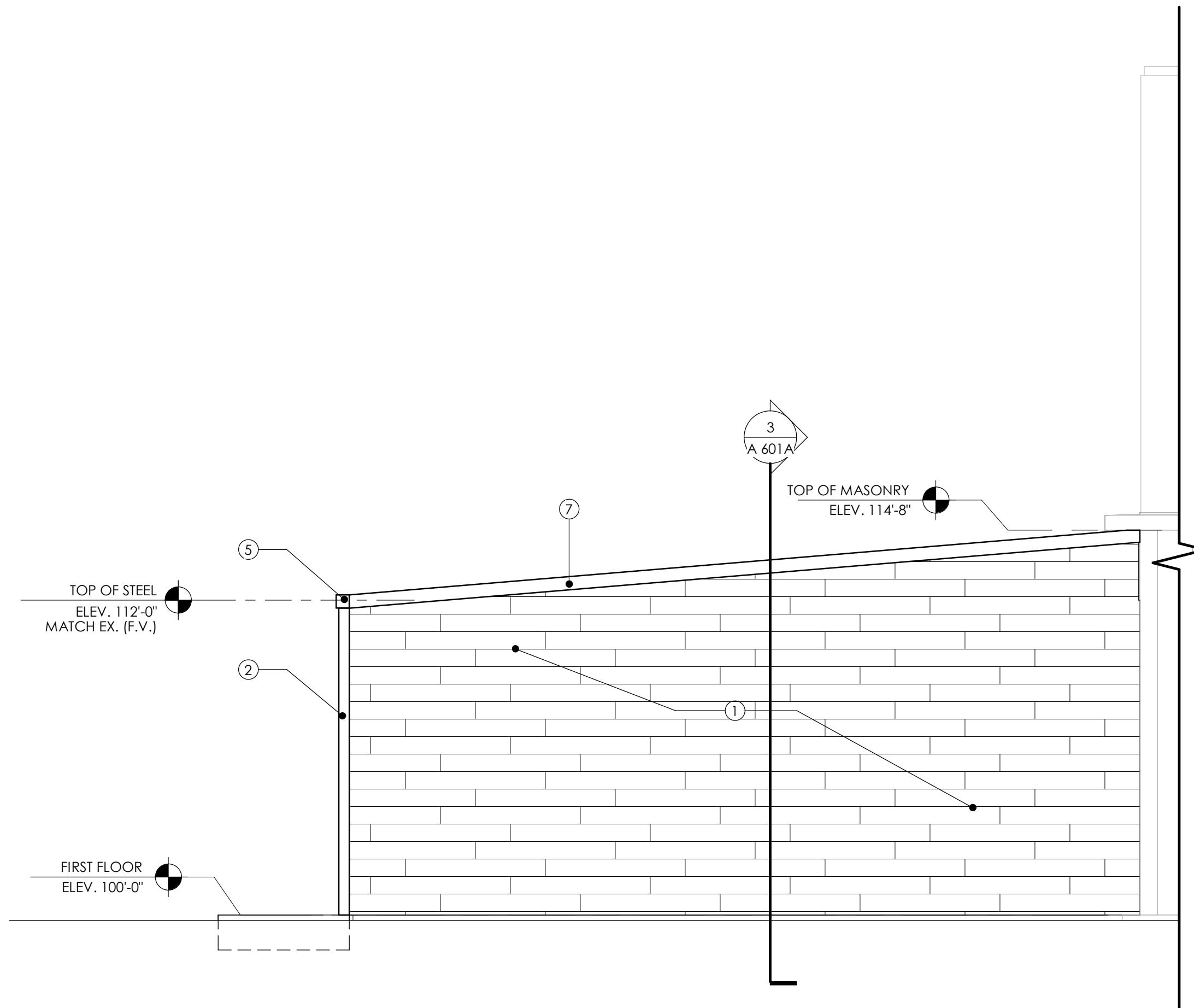
PROJ. NO. 2024-093

GENERAL EXTERIOR  
ELEVATION NOTES

- ALL EXPOSED MISC. EXTERIOR STEEL SHALL BE PAINTED WITH PAINT FINISH E-1.
- MASONRY COURSING SHOWN FOR MATERIAL REPRESENTATION ONLY. ACTUAL COURSING MAY VARY.
- MASONRY CONTROL JOINTS SHALL BE LOCATED AT ALL MASONRY HEIGHT CHANGES, WINDOW OPENINGS, DOOR OPENINGS, 5' MAX. FROM BUILDING CORNERS, AND 25' MAX. AT CONTINUOUS WALL LOCATIONS.

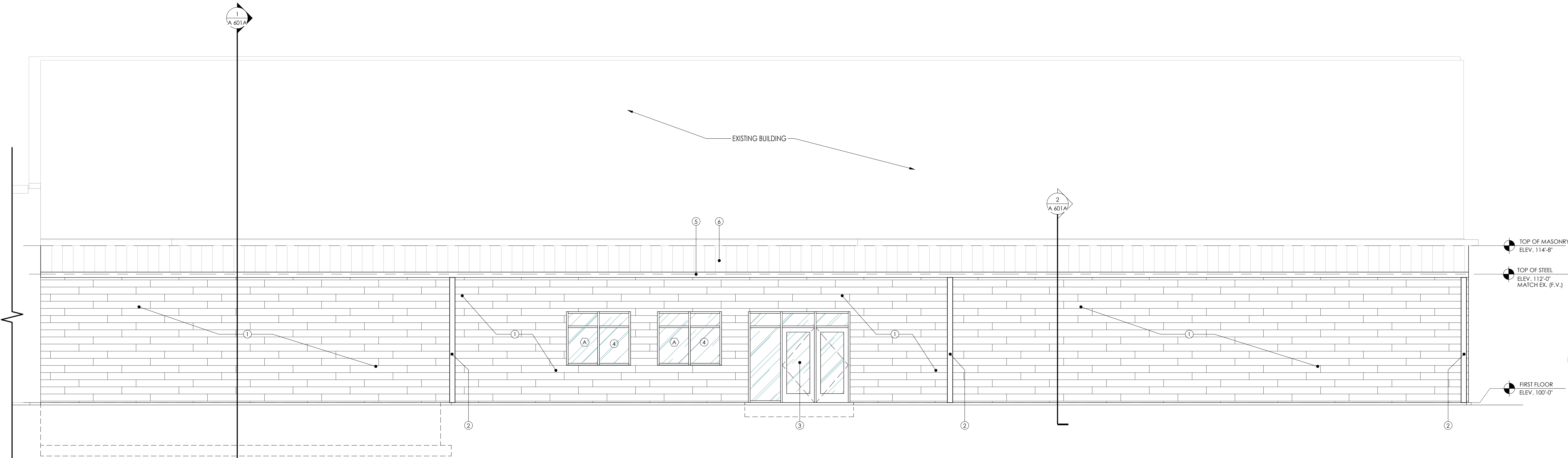
ELEVATION KEYNOTES

| NO. | DESCRIPTION                           |
|-----|---------------------------------------|
| 1   | LUX METAL SIDING - METALLIC COLOR TBD |
| 2   | PRE-FINISHED METAL DOWNSPOUT          |
| 3   | ALUMINUM DOOR AND FRAME ASSEMBLY      |
| 4   | ALUMINUM STOREFRONT WINDOW ASSEMBLY   |
| 5   | PRE-FINISHED METAL GUTTER             |
| 6   | PRE-FINISHED METAL ROOF               |
| 7   | PRE-FINISHED METAL ROOF TRIM          |



NORTH ELEVATION

SCALE: 1/4" = 1'-0" 2 A 501A



EAST ELEVATION

SCALE: 1/4" = 1'-0" 1 A 501A