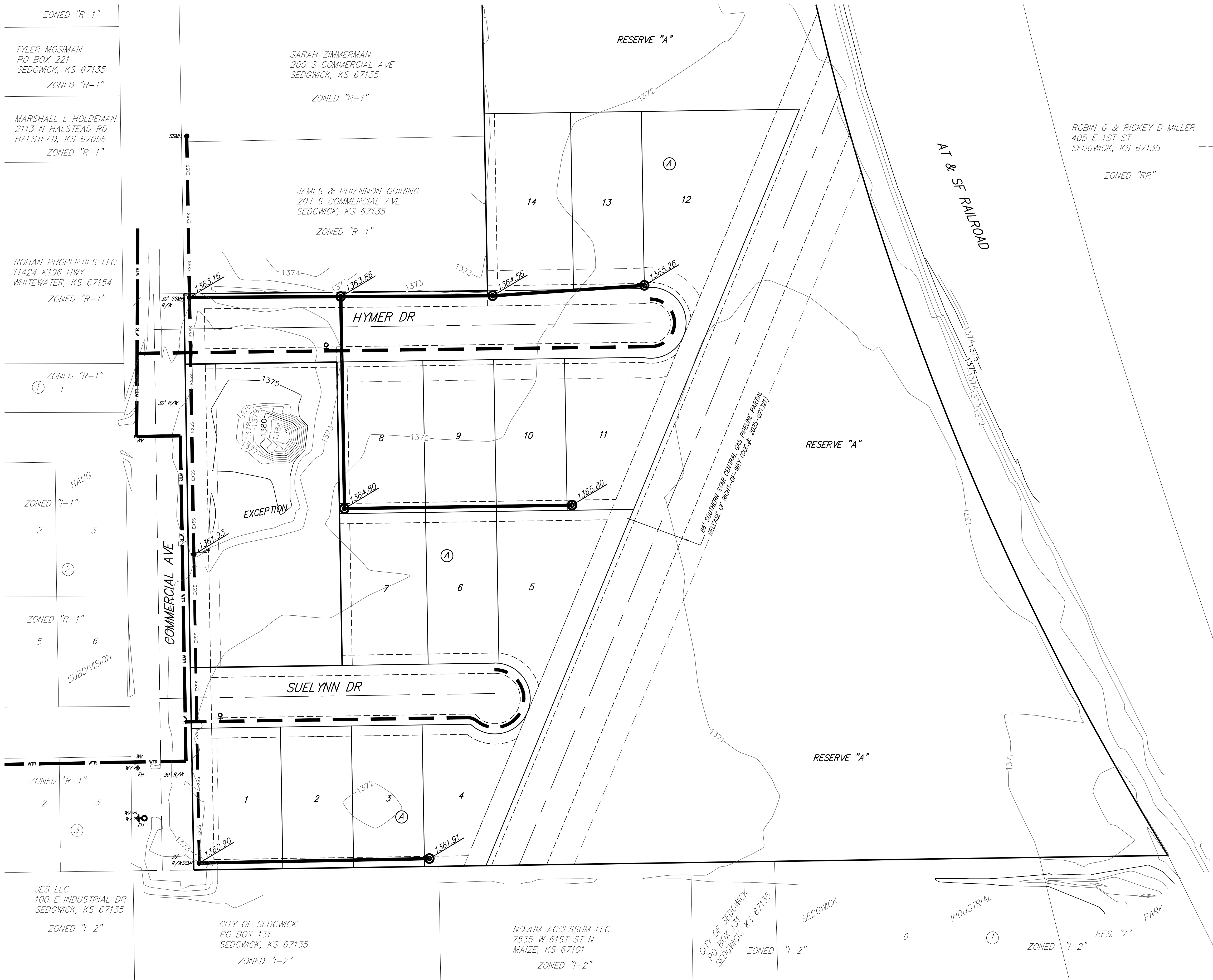
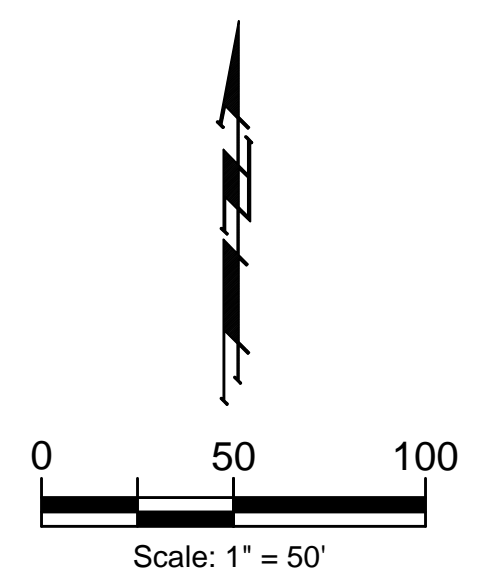


**BENCHMARKS:**

BM-#1:  
SQUARE CUT ON BACK NORTHEAST  
CORNER OF CONCRETE SLAB OF  
SANITARY SEWER LIFT STATION,  
4.7± NORTH AND 69.6± EAST OF  
SE CORNER, LOT 3, BLOCK 3, HAUG  
SUBDIVISION, SEDGWICK, SEDGWICK  
COUNTY, KANSAS.  
ELEV. = 1374.72 NAVD88

BM-#2:  
60-D STEP NAIL, EAST FACE OF  
LIGHT POLE, NORTHWEST CORNER  
OF HYMER DRIVE AND COMMERCIAL  
AVENUE, 55.9± NORTH AND 4.3±  
EAST OF NE CORNER, LOT 3, BLOCK  
2, HAUG SUBDIVISION, SEDGWICK,  
SEDGWICK COUNTY, KANSAS  
ELEV. = 1374.95 NAVD88



ROBIN G & RICKEY D MILLER  
405 E 1ST ST  
SEDGWICK, KS 67135  
-----1350----- Existing Grade

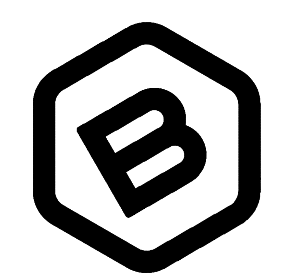
**NOTE**

\*\*\* ALL PROPOSED SANITARY SEWER  
PIPE WAS PLACED AT 0.4% SLOPE  
TO SHOW SERVICE ELEVATIONS AT  
FURTHEST MOST POINTS.

**LEGEND**

- Proposed Water Line  
(8" Unless Noted Otherwise)
- Existing Water Line  
(8" Unless Noted Otherwise)
- Proposed Fire Hydrant
- Existing Fire Hydrant
- Proposed Sanitary Sewer Line  
(8" Unless Noted Otherwise)
- Existing Sanitary Sewer Line  
(8" Unless Noted Otherwise)
- Existing Sanitary Sewer Manhole
- Proposed Sanitary Sewer Manhole
- Proposed Sanitary Sewer Cleanout
- Proposed Sanitary Sewer Flow
- Zero to Marginal Basement Service

**PRELIMINARY  
PLAN. NOT FOR  
CONSTRUCTION.**  
This document is  
preliminary in nature  
and is not a final, signed  
and sealed document.



**BAUGHMAN  
COMPANY**

315 Ellis St.  
Wichita, KS 67211  
316-262-7271  
BaughmanCo.com

CARDINAL 2ND  
ADDITION

**UTILITY  
PLAN**

PROJECT NUMBER:

DESIGN:      DRAWN:  
DATE: November 5, 2025  
SHEET      OF  
1            1

File: E:\Projects\Cardinal 2nd Addition\_25-01-P068\Engineering\Cardinal\_2nd\_UP.dwg