

CONCEPT 1: LAYERED

Inspiration

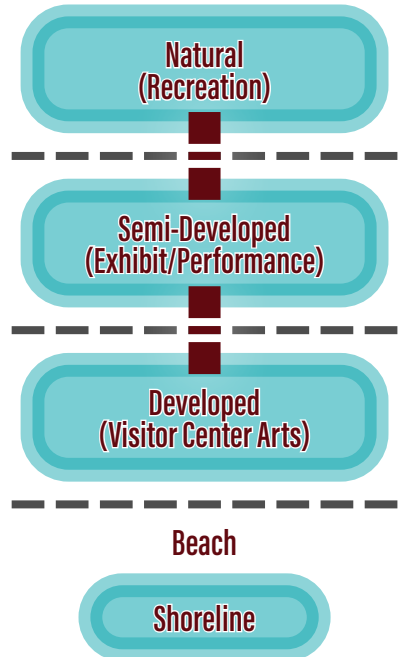
- A layered concept inspired by a traditional village layout with larger, more formal buildings located in a row along the shoreline or beach.
- Performance and exhibit facilities are located beyond these in the semi-developed area that blends with the natural environment.
- Visitors filter through the layers to explore the changing landscape.

Opportunities/Constraints

- Pros
 - Strong connections
 - Separate visitor and resident entrances to the Community Center
 - Staging area for coaches and tours
 - Separates bus traffic from Totem Row
 - Connects the Head Start School with the Cultural Park and playground
- Cons
 - Requires relocating the Senior Housing and the Carving Shed
 - No separation between coach and tour staging
 - Disconnects Dog Salmon Avenue

Amenities

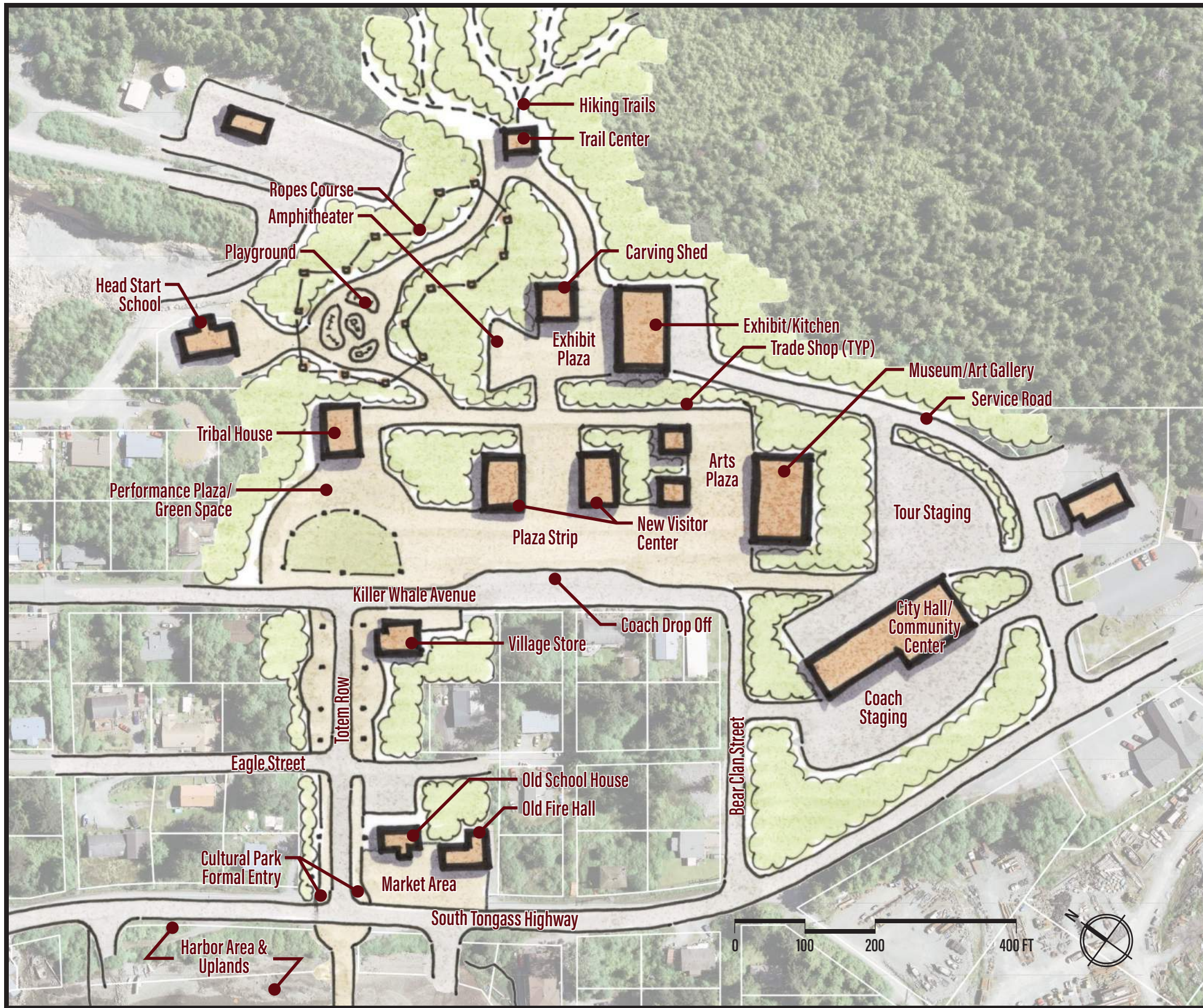
- Artists/makers workshops
- Amphitheater/outdoor performance space
- Exhibit/kitchen area to host food tours
- Market space
- Arts & culture museum
- Culturally themed playground



SAXMAN CULTURAL PARK & HARBOR MASTER PLAN Cultural Park: Concept 1



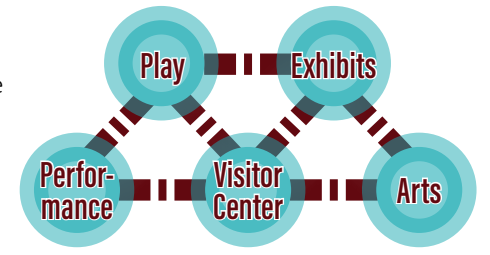
January 19, 2021



CONCEPT 2: SPOKE & HUB

Inspiration

- Centralized formal entry point or a hub at the heart of the Cultural Park.
- New Visitor's Center located at the central hub.
- From the central area visitors will move out from the hub to the various activities



Opportunities/Constraints

- Pros
 - Central area
 - Relocate the first point of contact away from the local Community Center
 - Separate tour and coach staging area
 - Strong entrance to the Cultural Park
 - Incorporates an outdoor performance space into the existing green space at the head of Totem Row
- Cons
 - Requires relocating the Senior Housing and the Carving Shed
 - Requires a new Visitor Center building
 - Disconnects Dog Salmon Avenue
 - Vehicle congestion along Totem Row

Amenities

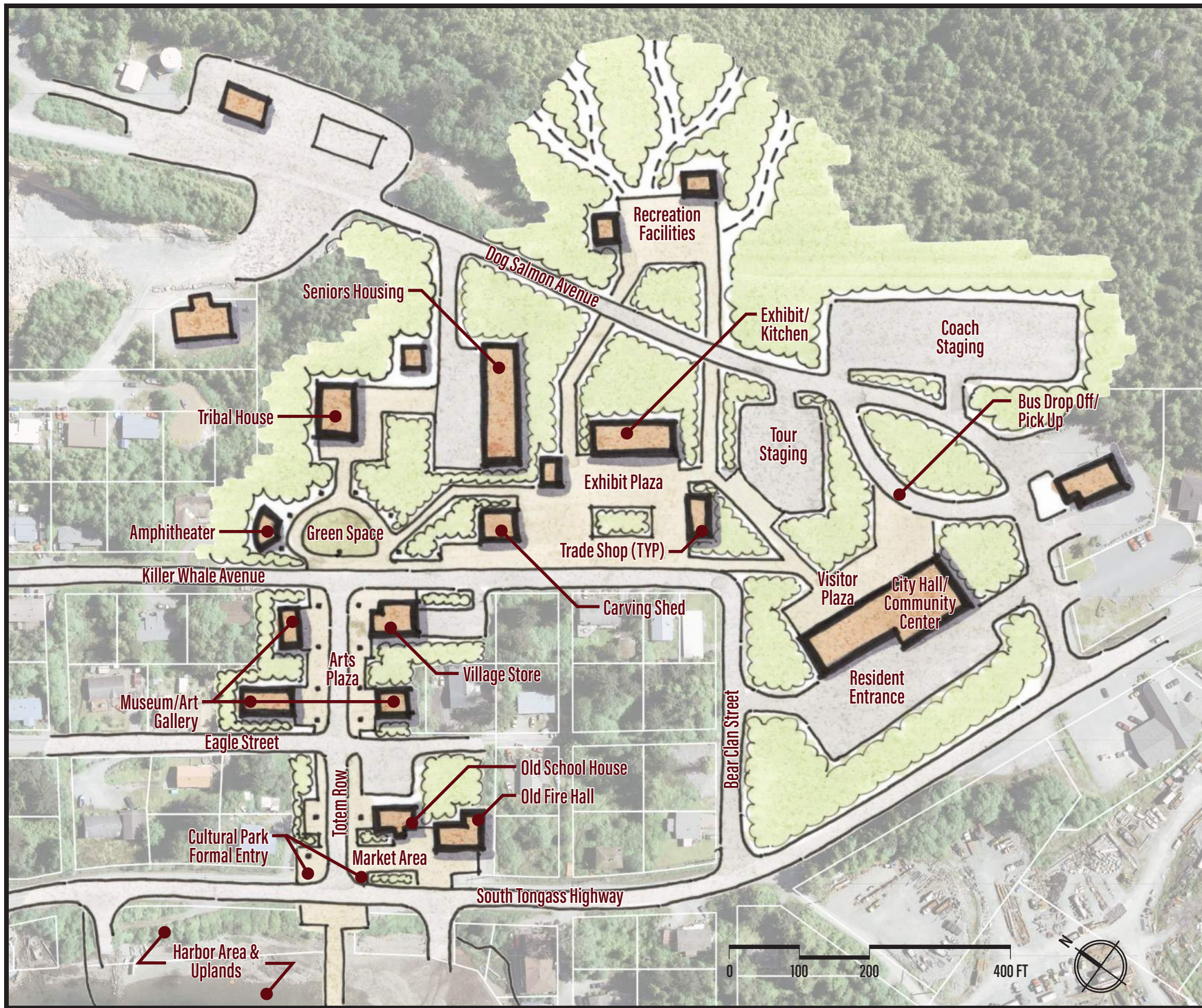
- Artists/makers workshops
- Amphitheater
- Outdoor performance space
- Exhibit/kitchen area to host food tours
- Market space
- Arts & culture museum
- Trail center and contact point
- Culturally themed playground
- Tree-based rope and adventure course



SAXMAN CULTURAL PARK & HARBOR MASTER PLAN Cultural Park: Concept 2



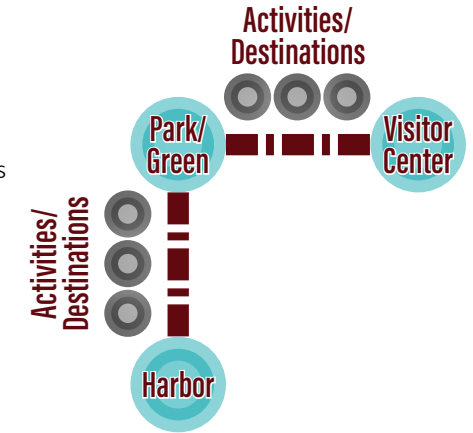
January 19, 2021



CONCEPT 3: AXIS

Inspiration

- The axis theme strengthens the pedestrian connections between the Harbor and the Cultural Park, meeting at the Tribal House.
- Activities are located along these connections similar to a pearl necklace, drawing a visitor along the connections and through the Cultural Park.



Opportunities/Constraints

- Pros
 - Strong axis connection in the park
 - Separate tour and coach staging area
 - A visitor of the space goes on a journey between the connection points
 - Connects the outdoor performance space and amphitheater with the existing green space at the head of Totem Row
 - Senior Housing and Carving Shed remains in place
 - Maintains Dog Salmon Avenue
 - Separates bus traffic from Totem Row
- Cons
 - No connection between the Head Start School and the Cultural Park
 - Potential conflicts with properties along Totem Row to be developed with Museum/Art Gallery buildings

Amenities

- Artists/makers workshops
- Amphitheater/outdoor performance space
- Exhibit/kitchen area to host food tours
- Market space
- Arts & culture museum
- Trail center and contact point

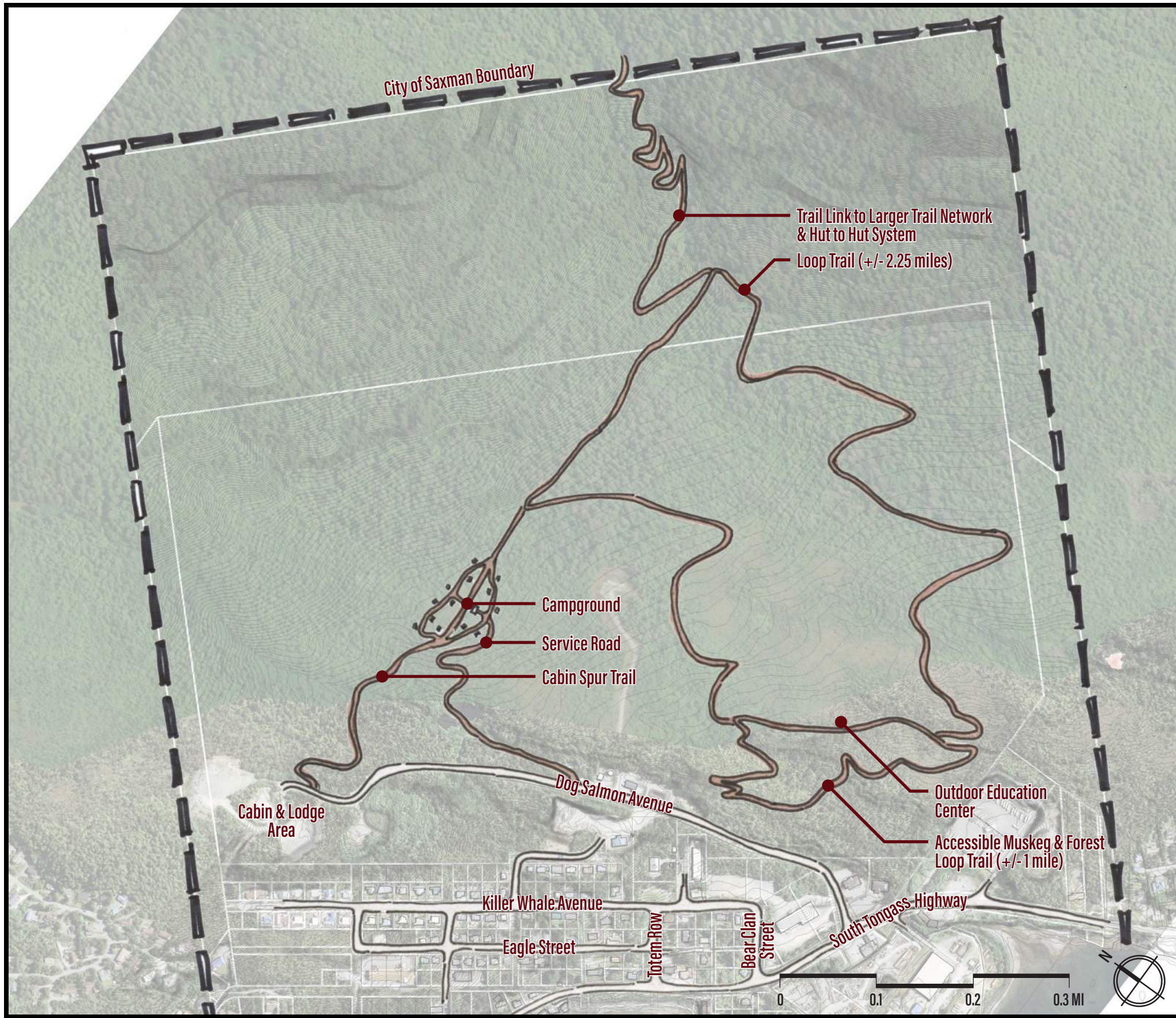


SAXMAN CULTURAL PARK & HARBOR MASTER PLAN Cultural Park: Concept 3



January 19, 2021

TRAILS & RECREATION



Layout Description

- Looped system providing a variety of distances and challenges to the user.
- Highlights the local ecosystems with interpretive opportunities that can be developed for trail tours.
 - Trail tours can be self-led or offered as a guided tour with a group.
- Recreation center that connects with the Cultural Park
 - Trail loops that start from the Recreation Center
 - Spur trails that connect from the trail loops to important connection points (campground, cabin, and lodge area)
- The trails will range from accessible to more challenging and be hardened aggregate with boardwalks where required through wet environments.
- Long-range planning includes a spur trail to connect with a regional trail network and hut-to-hut camping amenities.
- Campground that includes 15 tent sites, vault toilets, and a day-use pavilion.
- Cabin & Lodge area (see next concept).

Amenities

- Outdoor Education Center
- Cabin & lodge area
- Campground
- Looped trails for a variety of users
- Future regional trail connection opportunities



SAXMAN CULTURAL PARK & HARBOR MASTER PLAN Recreational Park: Trails



January 19, 2021

RECREATION CABINS

Layout Description

- Located away from the Cultural Park and Harbor activities in a quiet location that offers million dollar views.
- Clustered throughout a restored forest environment with a shared recreation space and linked connections to the hiking trails.
- Phased development to lower up-front costs.
- In the long-term, a space is provided for a future lodge site.

Amenities

- Cabins
 - 16' x 26' (384 square feet)
 - Timber framed structures
 - Common living space, bathroom, and two bedrooms.
 - Propane for heating and cooking.
 - Connected to electricity.
- Shared recreation space
 - Day-use pavilion
 - Fire pit
 - Outdoor gathering space

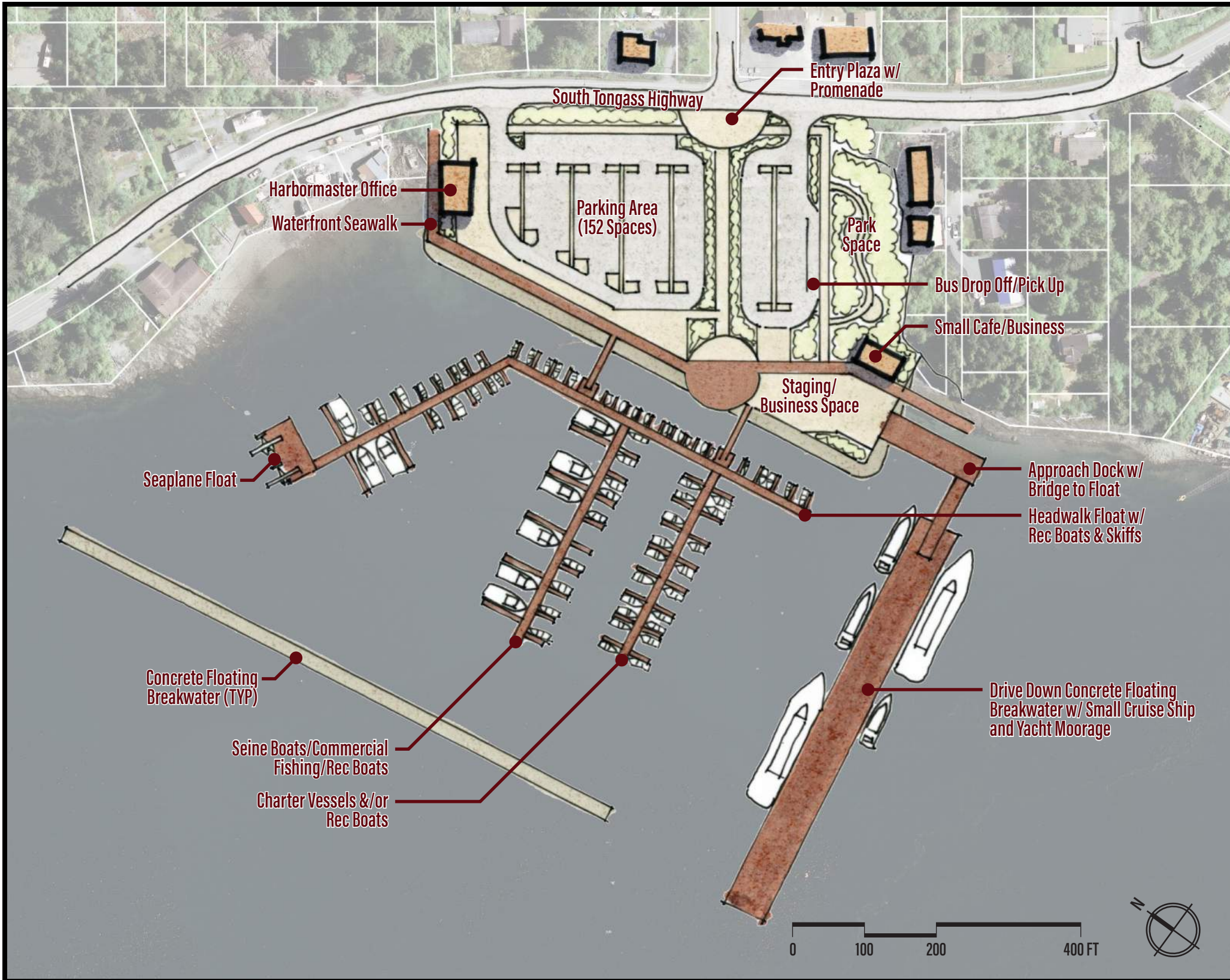


SAXMAN CULTURAL PARK & HARBOR MASTER PLAN Recreational Park: Cabins & Campground



January 19, 2021

HARBOR CONCEPT 1



Layout Description

- Breakwater/Wave Attenuator layout reflects recommendations of previous Wind/Wave analysis
 - (2) breakwater/wave attenuator floats
 - South breakwater/wave attenuator has dual purpose serving also as Drive-Down float w/ direct connection to the uplands area via vehicle/pedestrian access bridge
 - Cruise Ship/Yacht moorage float peripheral to harbor basin
 - Separate from majority of harbor users
 - Maximum maneuvering space for cruise ships
- Maximum harbor moorage w/ two pedestrian access gangways
 - Floats aligned with existing contours to avoid need for dredging
 - Headwalk float located along -20ft contour to allow access/usage at all tides
- Seaplane Facility incorporated into harbor float system – located far end of north mainwalk float
 - Provides wave protection while allowing for necessary space to maneuver

Number of Moorage Slips

- Moorage Summary:
 - 60ft – 16
 - 40ft – 60
 - 24ft – 34
 - <20ft – 20
 - Yachts ~600 If transient moorage

Opportunities/Constraints

- Combined Cruise Ship and Drive-Down Float
 - Pros:
 - Cost savings
 - Cruise Ship/Yacht float and associated activities peripheral to harbor basin
 - Direct charter vessel access via moorage at Cruise Ship float
 - Combined use in summer but available between cruise ship dockings and year-round to locals
 - Cons:
 - Removal of existing rock pinnacle required due to navigation hazard (i.e. additional cost)
 - Potential conflicts w/ local/recreational and industry having combined-use facility
- Combined Seaplane float with moorage float system
 - Pros:
 - Cost savings
 - Combined use in summer but minimal use between cruise ship dockings and remainder of year
 - Cons:
 - Potential conflicts w/ local/recreational and industry having combined-use facility
- Option for alternate access or dual access to drive-down float via Bear Clan.



SAXMAN CULTURAL PARK & HARBOR MASTER PLAN Harbor & Uplands: Concept 1



January 19, 2021

HARBOR CONCEPT 2

Layout Description

- Breakwater/Wave Attenuator layout reflects recommendations of previous Wind/Wave analysis
 - (3) breakwater/wave attenuator floats
 - Breakwater/wave attenuator layout to provide harbor protection but also adequate space for maneuvering of cruise ships in/out of harbor
- Dual purpose Cruise Ship/Yacht and Drive-Down float within harbor basin and direct connection to upland area via vehicle/pedestrian access bridge
- Float connection between Cruise Ship/Drive-down float and harbor float system for access to charter vessels
- Harbor moorage w/ two pedestrian access gangways
 - Floats aligned with existing contours to avoid need for dredging
 - Headwalk float located along -20ft contour to allow access/usage at all tides
- Seaplane Facility separate/peripheral to harbor float system but still inside breakwater/wave attenuator
 - Provides wave protection while allowing for necessary space to maneuver

Number of Moorage Slips

- Moorage Summary:
 - 60ft – 10
 - 40ft – 32; also ~ 300 lf transient moorage
 - 24ft – 26
 - <20ft – 24
 - Yachts ~ 300 lf transient moorage; also cruise ship float if available

Opportunities/Constraints

- Combined Cruise Ship and Drive-Down Float
 - Pros:
 - Cost savings
 - Combined use in summer but available between cruise ship dockings and year-round to locals
 - Direct access to harbor float system and charter vessels but still peripheral to local users
 - Cons:
 - Potential conflicts w/ local/recreational and industry having combined-use facility
- Seaplane Float Facility separate from harbor float system
 - Pros:
 - Separate access and peripheral to harbor basin and moorage floats
 - Maximum maneuvering space
 - Cons:
 - Additional cost
- Minimum Harbor Moorage due to need for large vessel maneuvering/navigation within harbor basin

