

MATERIAL SCHEDULE		
MARK	MATERIAL	FINISH/COLOR
②	THIN BRICK	INTERSTATE – MONTEREY
⑤A	EFIS	COLOR 1 – ACCESSIBLE BEIGE SW7036
⑤B	EFIS	COLOR 2 – TONY TAUPE SW7038
⑤C	EFIS	COLOR 3 – VAN DYKE BROWN SW7041
④	PRECAST CONCRETE SILL	NATURAL
⑤	ARCHITECTURAL FINISH CONCRETE FOUNDATION	NATURAL
⑥	PREFINISHED STRUCTURAL STANDING SEAM METAL ROOFING.	DARK BRONZE
⑦	PAINTED STEEL	MATCH DARK BRONZE, VERIFY COLOR
⑧	GLASS AND ALUMINUM STOREFRONT, RE: WINDOW AND DOOR SCHEDULE	DARK BRONZE STOREFRONT WITH CLEAR GLAZING
⑨	PREFINISHED METAL COPING	DARK BRONZE
⑩	PAINTED HM DOOR AND FRAME	MATCH DARK BRONZE, VERIFY COLOR
⑪	COWS TONGUE DOWNSPOUT NOZZLE, INSTALL AT 24" ABOVE FINISH GRADE, RE: PLUMBING	–
⑫	LIGHT FIXTURE, RE: ELECTRICAL	
⑬	SIGNAGE PROVIDED AND INSTALLED BY OWNER. G.C. TO PROVIDE ELECTRICAL CONNECTIONS, RE: ELECTRICAL. G.C. TO PROVIDE ANCHORAGE FOR SIGNAGE. G.C. TO PROVIDE CORE DRILLED HOLES THROUGH MASONRY FOR CONDUIT FROM J BOXES MOUNTED AT THE INTERIOR OF THE BUILDING. COORDINATE NUMBER AND LOCATION WITH SIGNAGE SUPPLIER.	
⑭	BOARD AND BATTEN CEMENT BOARD SIDING	HARDIE BOARD – TIMBER BARK
⑮	6" LAP CEMENT BOARD SIDING	HARDIE BOARD – TIMBER BARK

EXTERIOR ELEVATION NOTES:
1. ALL EXPOSED STEEL TO BE PAINTED AS DESCRIBED IN SPEC.
2. UNDERSIDE OF PREFINISHED METAL STANDING SEAM ROOFING TO BE PAINTED.
3. PROVIDE MASONRY CONTROL JOINTS AS SHOWN, RE: 7/A5.2.
4. PROVIDE COLORED MORTAR AT CMU AND BRICK.



RETAIL BUILDING
SANTAQUIN PAD A

SANTAQUIN, UTAH

MARK	DATE	DESCRIPTION

DATE: MAY 14, 2021
AGENCY PROJECT NO:
DESIGN SEQUENCE PROJECT NO: 2010.01
CAD DWG FILE NO:

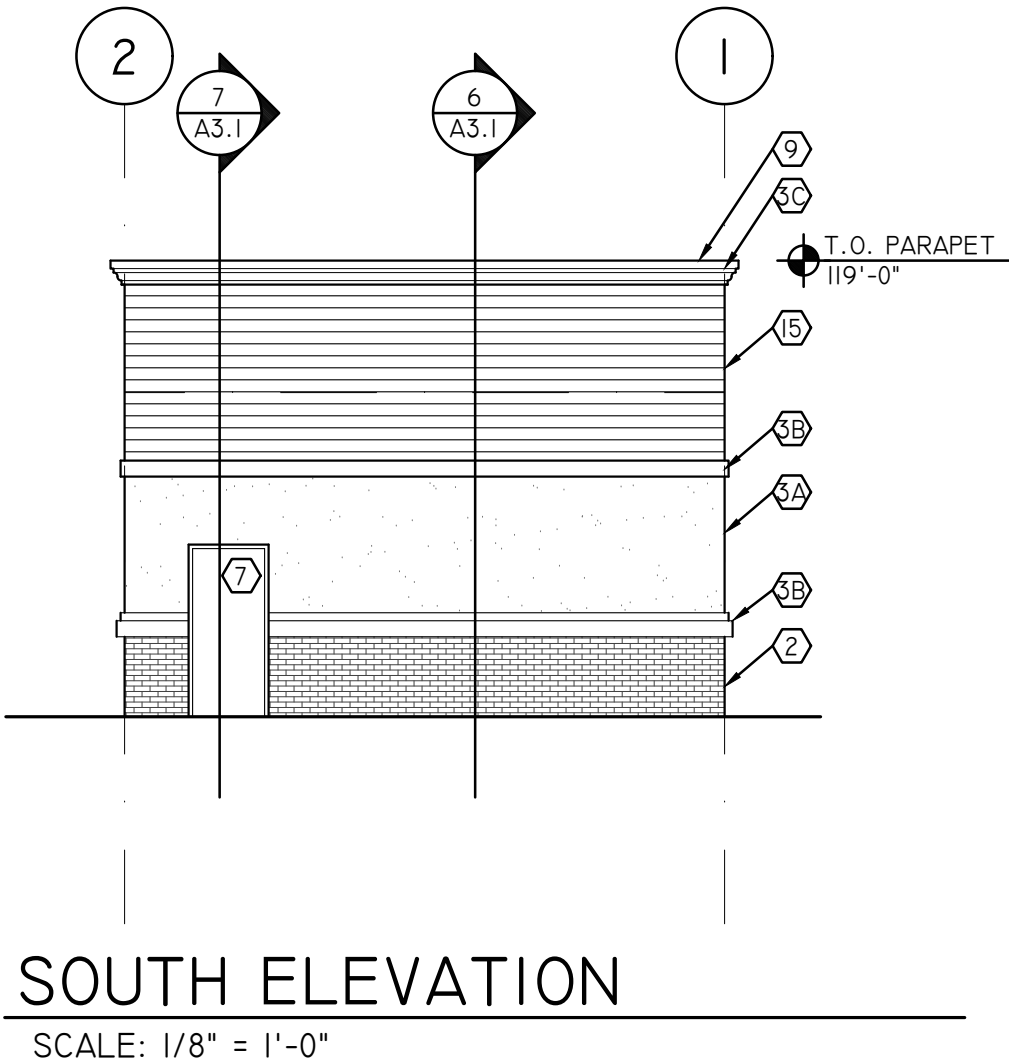
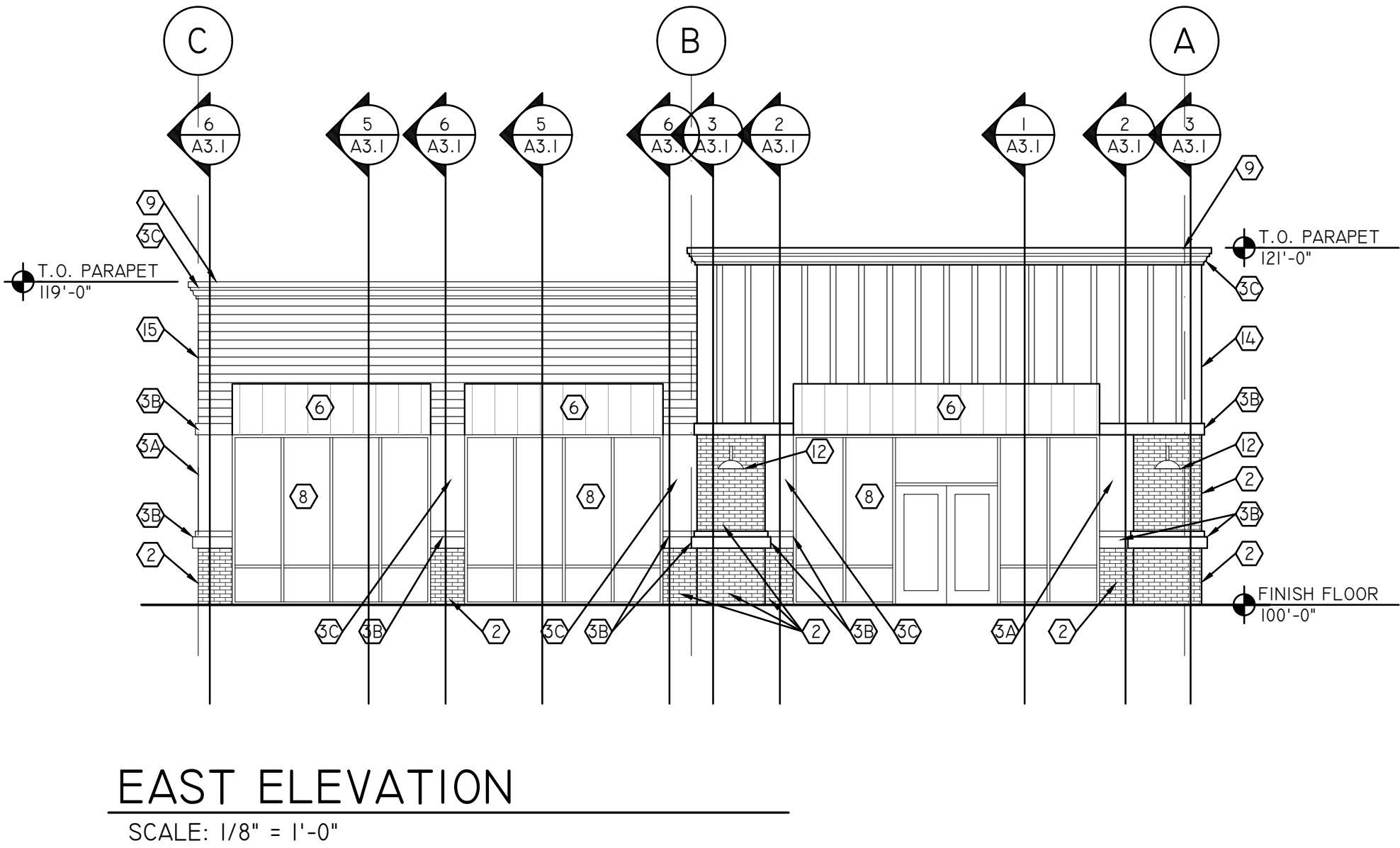
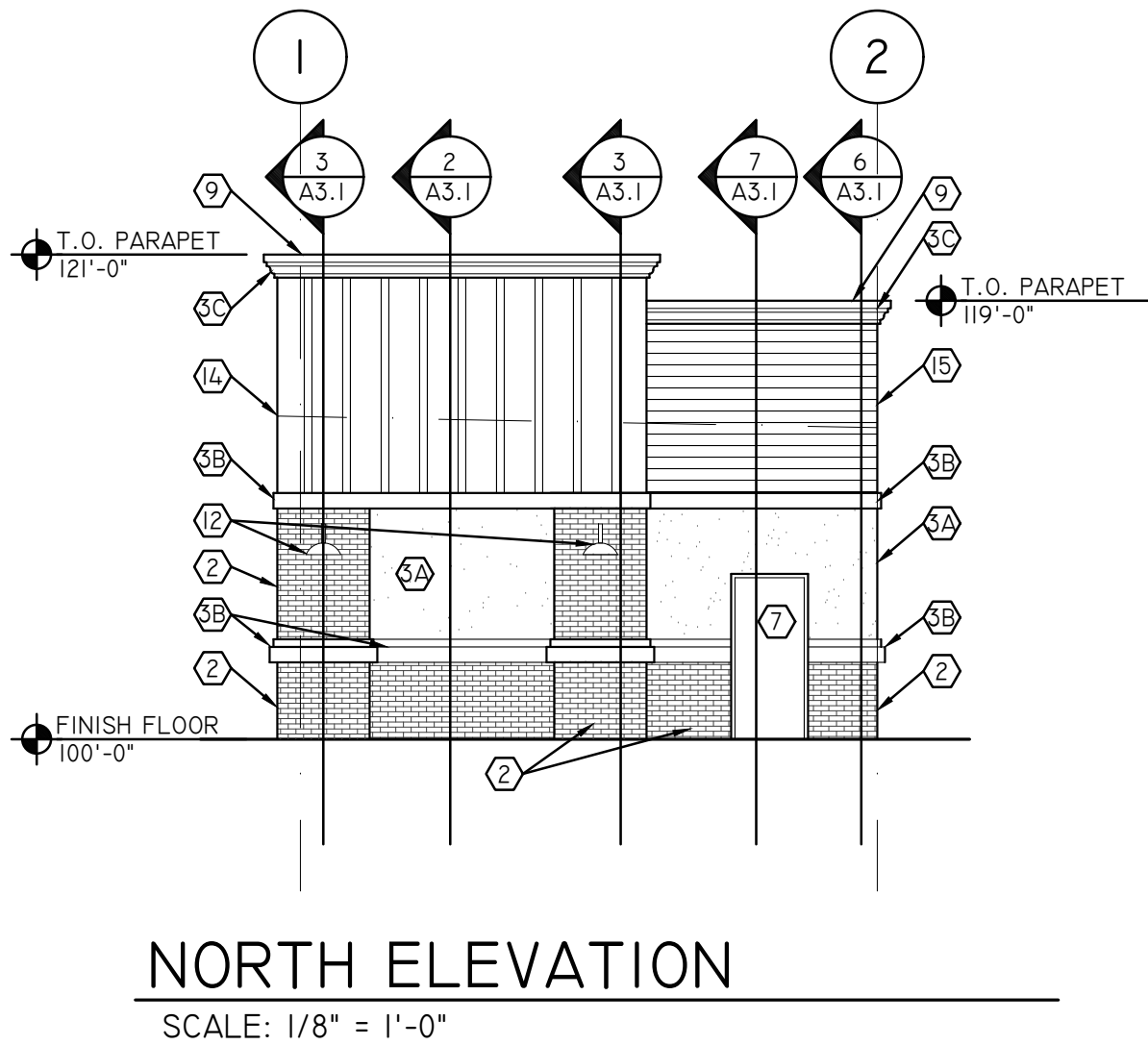
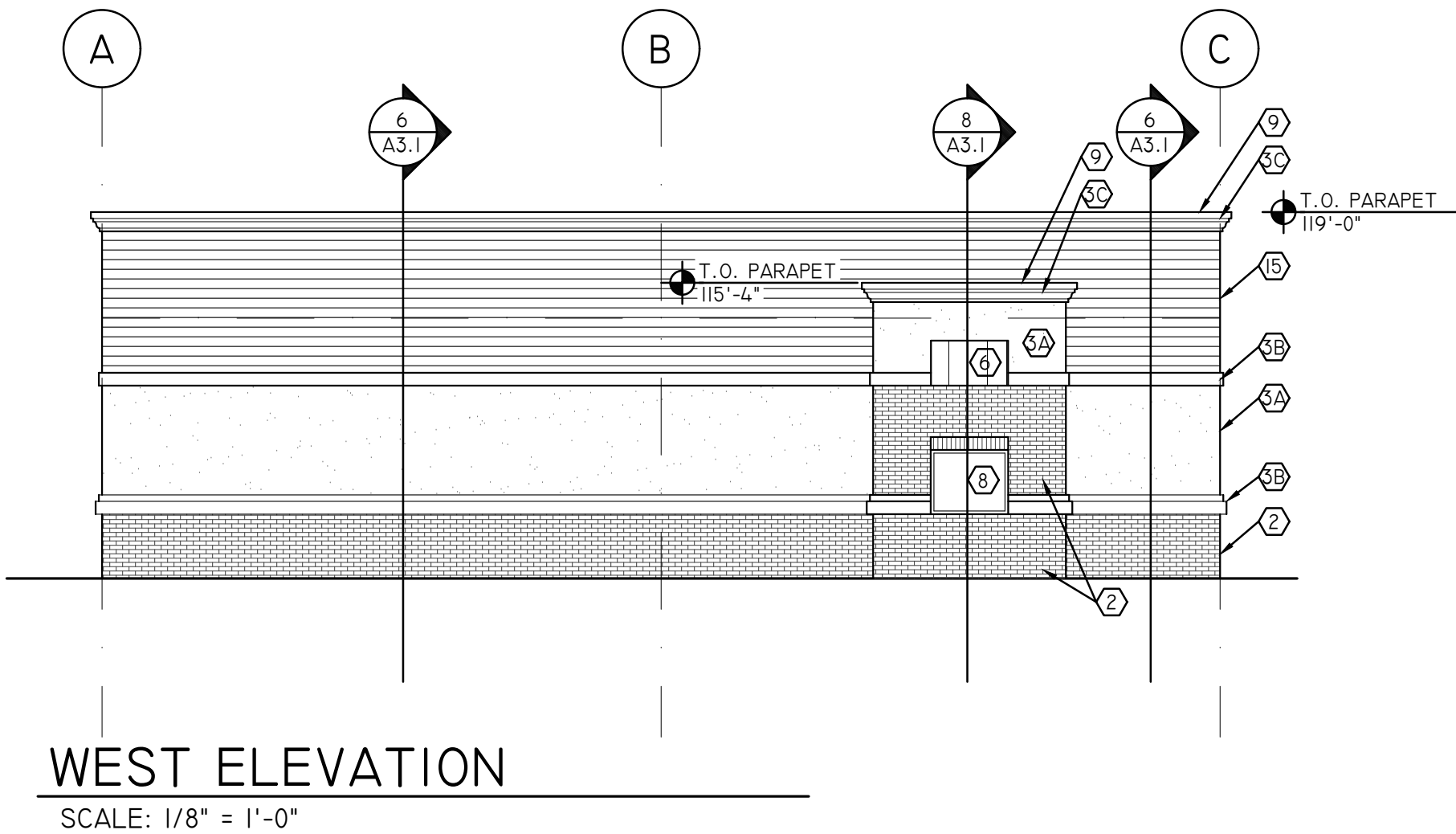
DRAWN BY: KV
DESIGNED BY: KV
DWG TYPE:
ARCHITECTURAL PHASE:

BID SET

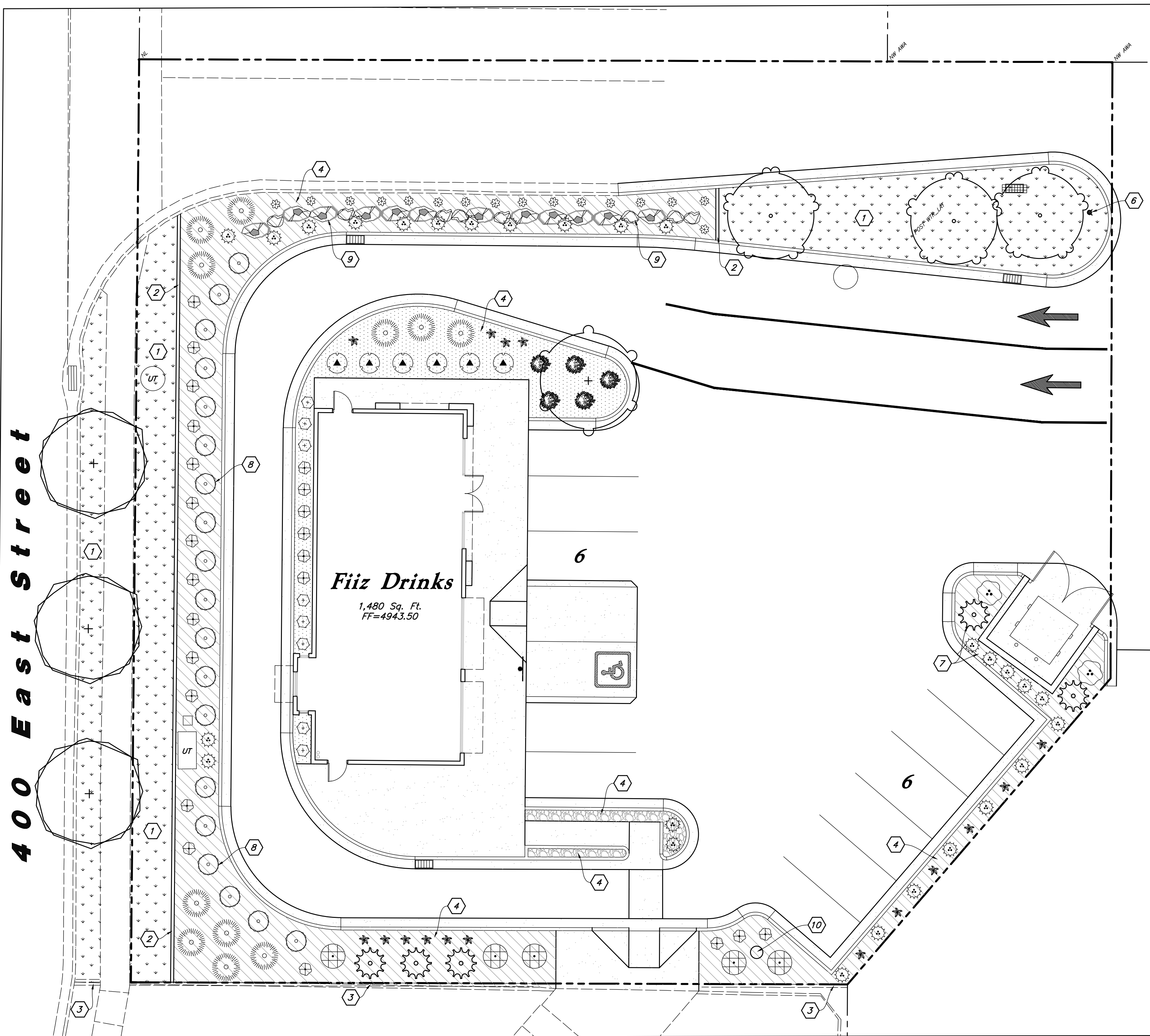
SHEET TITLE

EXTERIOR
ELEVATIONS

A2.1



400 East Street



PLANT SCHEDULE

DECIDUOUS TREES	QTY	BOTANICAL / COMMON NAME	SIZE
	3	Koeleruteria paniculata / Golden Rain Tree	2" Caliper
	1	Quercus robur 'Skyrocket' / Skyrocket English Oak	2" Caliper
	3	Syringa reticulata 'Ivory Silk' / Ivory Silk Japanese Tree Lilac	2" Caliper
EVERGREEN TREES	QTY	BOTANICAL / COMMON NAME	SIZE
	5	Picea pungens glauca / Columnar Spruce	6-8' Ht.
EVERGREEN SHRUBS	QTY	BOTANICAL / COMMON NAME	SIZE
	19	Buxus x 'Green Mound' / Green Mound Boxwood	5 gal
	11	Juniperus horizontalis 'Bar Harbor' / Bar Harbor Creeping Juniper	5 gal
ORNAMENTAL GRASSES	QTY	BOTANICAL / COMMON NAME	SIZE
	27	Calamagrostis x a. 'Karl Foerster' / Feather Grass	1 gal
	23	Helictotrichon sempervirens 'Sapphire' / Blue Oat Grass	1 gal
PERENNIALS	QTY	BOTANICAL / COMMON NAME	SIZE
	16	Hemerocallis x 'Red Hot Returns' / Red Hot Returns Daylily	1 gal
	16	Nepeta x faassonii 'Dropmore' / Catmint	1 gal
DECIDUOUS SHRUB	QTY	BOTANICAL / COMMON NAME	SIZE
	8	Berberis thunbergii 'Orange Rocket' / Orange Rocket Barberry	5 gal
	5	Euonymus alatus 'Compactus' / Compact Burning Bush	5 gal
	2	Prunus x cistena / Purple Leaf Sand Cherry	5 gal
	6	Ribes alpinum 'Green Mound' / Green Mound Alpine Currant	5 gal
	5	Spiraea x bumalda 'Goldflame' / Goldflame Spirea	5 gal
LAWN	QTY	BOTANICAL / COMMON NAME	TYPE
	2,112 sf	Poa pratensis / Kentucky Bluegrass Blend	sod

Landscape Data

Site Area = 22,907 s.f. (0.526 ac.)
Landscape Area Required = 2,291 s.f. (10%)
Landscape Area Provided = 5,218 s.f. (23%)
Parking Area = 16,157 s.f.
Landscape Parking Required = 1,616 s.f. (10%)
Landscape Parking Provided = 1,694 s.f. (10.5%)
400 East Street Frontage = 126 L.f.
400 East Street Trees Req. = 3 Trees (3 Provided)

Landscape Notes:

- All Landscape Material Shall be Fully Irrigated by an Automatic Irrigation System. Drip for Shrub Areas and Spray for Lawn Areas. See Irrigation Sheets L2.1 for Layout and Sheet L3.1 for Details.
- Adjust Landscape Material as Needed to Allow Access to all New and Existing Utilities. Irrigation Components Shall be Spaced Between Plant Material to Allow Easy Access for Maintenance.
- All Areas Disturbed by Construction Shall be Landscaped and Not Left Undone. Blend New Landscape into Existing Corner Landscape.
- No Edging Shall be Used Between Different Stone. Provide a Nice Clean Smooth Flowing Defined Line Between Stone.

Landscape Keynotes

- Install New Lawn
- Install Landscape Concrete Curbing
- Existing Landscape Concrete Curbing
- Install Shrub Planter with Decorative Stone and Weed Barrier
- Irrigation Water Meter and Connection - See Irrigation Plan for More Detail
- New Fire Hydrant; Verify that There is 3' Clearance Around Hydrant
- Planting Screen for Dumpster
- 3' High Evergreen Planting Screen for Parking Lot
- Rock Retaining Wall; Clean Dirt Out Between Rocks and Install Decorative Stone; Wash Dirt off of Rocks; See Material Schedule for More Detail
- Irrigation Secondary Meter- See Utility and Irrigation Plan for More Detail

UT - Existing/New Utility Box or Manhole

MATERIAL SCHEDULE

Symbol	Comments	Detail
	Decorative Stone #1 - Install a (3) Three Inch Depth over Dewitt Pro5 Weed Barrier; Stone Shall be Used in Shrub Planters Where Shown on Plan; Stone Shall be Washed Prior to Installation; Stone Shall be 1" Diameter Crushed, Fractured Talon's Cove (Gray Color) Stone from Utah Landscape Rock (435-250-3851)	Detail: 4/L3.1
	Decorative Stone #2 - Install a (6) Six Inch Depth over Dewitt Pro5 Weed Barrier; Stone Shall be Used in Shrub Planters Where Shown on Plan; Stone Shall be Washed Prior to Installation; Stone Shall be 2" Dia. Crushed, Fractured Stone from Staker Parson Copper Canyon Pit (385-239-0804); Boulders for Wall Shall Match This Decorative Stone Color (Tan and Angular); Install Stone Between Boulders in Retaining Wall	Detail: 4/L3.1
	Decorative Stone #3 - Install over Dewitt Pro5 Weed Barrier; Stone Shall be Used in Shrub Planters Where Shown on Plan; Stone Shall be Washed Prior to Installation; Stone Shall be 4-6" Diameter Crushed, Fractured Stone to Match Decorative Stone #1 (Gray); Interlock and Secure Stone on Steep Slopes; Stone to be Used on Steep Slopes	Detail: 4/L3.1
	4" x 6" Landscape Concrete Curbing - Install Flush to all Concrete Edges between Lawn and Planting Areas; Curbing Shall be Continuous; Adjust Curbing as Needed to Avoid Existing and New Utilities.	Detail: 4/L3.1

General Landscape Notes:

- Plant material quantities are provided for bidding purposes only. It is the contractors responsibility to verify all quantities listed on the plans and the availability of all plant materials and their specified sizes prior to submitting a bid. The contractor must notify the Landscape Architect prior to submitting a bid if the contractor determines a quantity deficiency or availability problem with specified material. The contractor shall provide sufficient quantities of plants equal to the symbol count or to fill the area shown on the plan using the specified spacing. Plans take precedence over plant schedule quantities.
- Contractor shall call Blue Stake before excavation for plant material.
- Prior to construction, the contractor shall be responsible for locating all underground utilities and shall avoid damage to all utilities during the course of the work. It shall be the responsibility of the contractor to protect all utility lines during the construction period, and repair any and all damage to utilities, structures, site appurtenances, etc. which occurs as a result of the landscape construction.
- The landscape contractor shall examine the site conditions under which the work is to be performed and notify the general contractor in writing of unsatisfactory conditions. Do not proceed until conditions have been corrected.
- The contractor shall provide all materials, labor and equipment required for the proper completion of all landscape work as specified and shown on the drawings.
- See civil and architectural drawings for all structures, hardscape, grading, and drainage information.
- Contractor safety and cleanup must meet OSHA standards at all times. All contractors must have adequate liability, personnel injury and property damage insurance. Clean-up must be performed daily, and all hardscape areas must be washed free of dirt and mud on final cleanup. Construction must occur in a timely manner.
- All new plant material shall conform to the minimum guidelines established by the American Standard for Nursery Stock Published by the American Association of Nurseryman, Inc. In addition, all new plant material shall be of specimen quality.
- The Owner/Landscape Architect has the right to reject any and all plant material not conforming to the plans and specifications.

- Any proposed substitutions of plant species shall be made with plants of equivalent overall form, height, branching habit, flower, leaf, color, fruit and culture only as approved by the Landscape Architect.
- It is the contractors responsibility to furnish all plant materials free of pests or plant diseases. It is the contractor's obligation to maintain and warranty all plant materials.
- The contractor shall take all necessary scheduling and other precautions to avoid winter, climatic, wildlife, or other damage to plants. The contractor shall install the appropriate plants at the appropriate time to guarantee life of plants
- The contractor shall install all landscape material per plan, notes and details.
- All existing and relocated trees shall be properly protected. Trees damaged during construction shall be replaced at no cost to the owner.
- Plant names are abbreviated on the drawings, see plant ischedule for symbols, abbreviations, botanical, common names, sizes, estimated quantities and remarks.
- No grading or soil placement shall be undertaken when soils are wet or frozen.
- Existing topsoil to be stripped and stockpiled for landscape use. Contractor shall verify existing topsoil amounts and quality with the general contractor. The landscape contractor shall perform a soil test on existing and imported topsoil and amend per soil test recommendations. Soil test to be done by certified soil testing agency. Provide new imported topsoil as needed from a local source. Imported topsoil must be a premium quality dark sandy loam, free of rocks, clods, roots, and plant matter. Topsoil to be installed in all landscaping areas.
- Prior to placement of topsoil in all landscaping areas, all subgrade areas shall be loosened by scarifying the soil to a depth of 6 inches in order to create a transition layer between existing and new soils.
- Provide a 12" depth of stockpiled or imported topsoil in parking islands and an 8 inch depth in all other shrub areas.

- All plant material holes shall be dug twice the diameter of the rootball and 6 inches deeper. Excavated material shall be removed from the site and replaced with plant backfill mixture. The top of the root balls, shall be planted flush with the finish grade.
- Plant backfill mix shall be composed of 3 parts topsoil to 1 part soil pep, and shall be mixed at the planting hole. Deep water all plant material immediately after planting. Add backfill mixture to depressions as needed.
- All new plants to be balled and burrapped or container grown, unless otherwise noted on plant schedule. Container grown trees shall have the container cut and removed. Trees in ball and burrap shall have the strings, burrap or plastic cut and pulled away from the trunk exposing 1/3 of the root ball. For trees in wire baskets cut and remove the wire basket.
- Upon completion of planting operations, all landscape areas with trees, shrubs, and perennials, shall receive specified stone over Dewitt Pro5 Weed Barrier. Stone shall be evenly spread on a carefully prepared grade free of weeds. The top of stone should be slightly below finish grade and concrete areas.
- Sod must be premium quality, evenly cut, established, healthy, weed and disease free, and from an approved source.
- Install landscape concrete curbing between lawn and shrub areas. Curbing shall be installed level and uniform and shall match top finish grades of concrete walks and curbs. See landscape concrete curbing detail.
- Provide a 4 inch depth of existing or imported topsoil in all lawn areas.
- Sod must be premium quality, evenly cut, established, healthy, weed and disease free, and from an approved source.
- All lawn areas to have uniform grades by float raking. Prior to laying sod, apply a starter fertilizer at a rate recommended by the manufacturer. Sod must be laid with no gaps between pieces on a carefully prepared topsoil layer. Sod to be slightly below finish grade and concrete walks and curbing. The laid sod must be immediately watered after installation. Any burned areas will require replacement. Adjust sprinkler system to assure healthy green survival of the sod without water waste.
- The contractor shall comply with all warranties and guarantees set forth by the Owner, and in no case shall that period be less than one year following the date of completion and final acceptance.



Know what's below.
Call before you dig.

ANDERSON WAHLEN & ASSOCIATES
2010 North Redwood Road, Salt Lake City, Utah 84116
(801) 521-8525 - anderson@andersonwahlengroup.com

Landscape Plan

Fiiz Drinks

30 North 400 East Street
Santaquin City, Utah

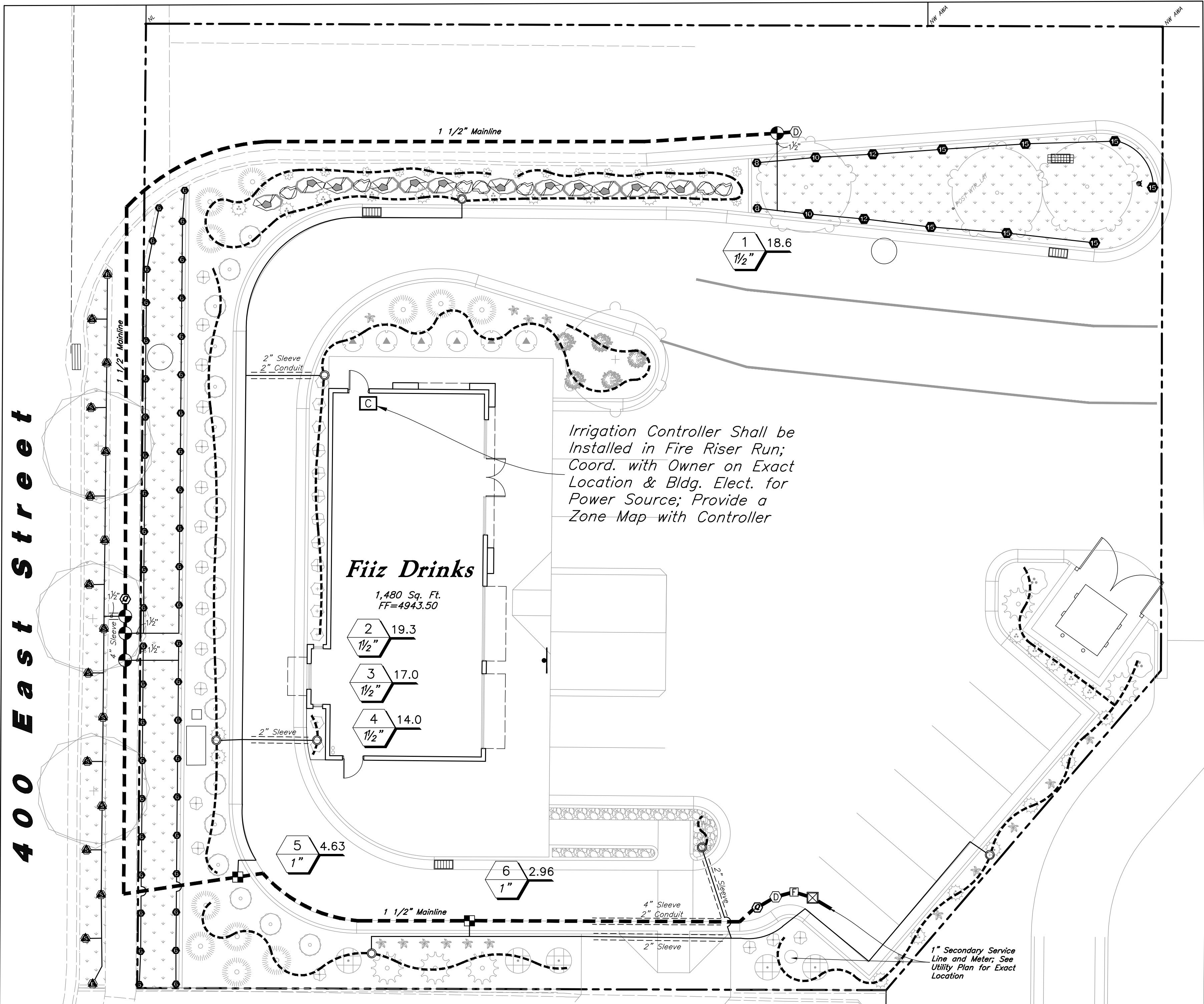


14 May, 2021

SHEET NO.

L1.1

400 East Street



General Irrigation Notes:

- Prior to construction, the contractor shall be responsible for locating all underground utilities and shall avoid damage to all utilities during the course of the work. It shall be the responsibility of the contractor to protect all utility lines during the construction period, and repair any and all damage to utilities, structures, site appurtenances, etc. which occurs as a result of the landscape construction.
- The irrigation contractor shall examine the site conditions under which the work is to be performed and notify the general contractor in writing of unsatisfactory conditions. Do not proceed until conditions have been corrected.
- The contractor shall provide all materials, labor and equipment required for the proper completion of all irrigation work as specified and shown on the drawings.
- See civil and architectural drawings for all structures, hardscape, grading, and drainage information.
- Contractor safety and cleanup must meet OSHA standards at all times. All contractors must have adequate liability, personnel injury and property damage insurance. Clean-up must be performed daily, and all hardscape areas must be washed free of dirt and mud on final cleanup. Construction must occur in a timely manner.
- The Owner/Landscape Architect has the right to reject any and all irrigation material not conforming to the plans and specifications.
- The contractor shall install all irrigation material per plan, notes and details.
- Irrigation system components must be premium quality only and installed to manufactures requirements and specifications. The contractor is responsible for checking state and local laws for all specified materials and workmanship. Substitutions must be approved by landscape architect. Provide owner and maintenance personnel with instruction manual and all products data to operate, check, winterize, repair, and adjust system.
- Irrigation system guarantee for all materials and workmanship shall be one year from the time of final project acceptance. Guarantee will include, but is not limited to winterizing, spring activation, repair, trench setting, backfilling depressions, and repairing freeze damage.
- All irrigation system check must be done before the system is backfilled. Irrigation mainline and each control valve section must be flushed and pressure checked. Assure the complete system has no documented problems and full head to head coverage with adequate pressure for system operation. Adjust system to avoid spray on building, hardscape, and adjacent property. Any problems or plan discrepancies must be reported to the landscape architect.
- Irrigation laterals must be schedule 40 P.V.C. with schedule 40 fittings. one (1) inch minimum size. Solvent weld all joints as per manufactures specifications for measured static p.s.i. Teflon tape all threaded fittings. The minimum depth of lateral lines shall be twelve (12) inches. Adapt system to manual compression air blowout.
- Irrigation mainline that are 2" and smaller mainlines shall be schedule 40 PVC pipe with schedule 80 fittings. Solvent weld all joints as per manufactures specifications for measured static pressure. Use teflon tape on all threaded joints. Line depth must be twenty-four (24) inches minimum.
- Install dielectric fittings whenever dissimilar metals are joined.
- Design locations are approximate. Make minor adjustments necessary to avoid plantings and obstructions such as signs and light standards. Maintain 100(%) percent irrigation coverage of areas indicated.
- Controller valves to be grouped together wherever possible. Install valve boxes with long side perpendicular to walk, curb, lawn, building or landscape features. Valve boxes to conform with finish grades.
- Control valve wire shall be #14 single conductor: white for common wire, red for hot wire and blue for the spare wire. Provide (2) two spare wire that runs the length of the mainline and to the controller. All wiring shall be UF-UL rated. All connections shall be made with water tight connectors (DBR/Y or equivalent) and contained in control valve boxes. Provide 36" extra wire length at each remote control valve in valve box. Install control wiring with main service line where possible. Provide slack in control wires at all changes in direction.
- Control valve size, type, quantity, and location to be approved by landscape architect. install in heavy duty plastic vandal proof box. Size boxes according to valve type and size for ease of maintenance and repair. Install one (1) cubic feet of pea gravel for sump in base of boxes. Boxes to be Carson Brooks or equal.
- Quick couplers shall be a Rain Bird 44-NP (Non-Potable Cover) with a 1 inch Lasco swing joint assembly. Support with rebar in each retainer lug. Install where shown on the plans.
- Irrigation system backfill must occur only after system check is completed as specified. Use only rock free clean fill around pipes, valves, drains, or any irrigation system components. Water settle all trenches and excavations.
- All irrigation pipe running through walls, under sidewalk, asphalt, or other hard surface shall be sleeved prior to paving. It is the irrigation contractors responsibility to coordinate sleeving with concrete and pavement contractors. Sleeves will be schedule 40 P.V.C. The depth for mainline sleeves shall be twenty-eight (28) inches minimum. Depth for lateral sleeves shall be sixteen (16) inches minimum. Sleeves shall be a minimum of two sizes larger than the pipe to be sleeved. All valve wiring shall be contained in separate sleeving.

- Plans are diagrammatic and approximate due to scale, where possible, all piping is to be installed within the planting areas. No tees, els, or changes in direction shall occur under hardscape.
- It is the contractors responsibility to verify all quantities based upon the plan prior to completion of a construction cost estimate.
- The irrigation contractor shall flush and adjust all sprinkler heads for optimum performance and to prevent possible overspray onto walks, roadways, and/or buildings as much as possible. This shall include selecting the best degree of arc to fit the site and to throttle the flow control of each valve to obtain the optimum operating pressure for each system. All mainlines shall be flushed prior to the installation of irrigation heads.
- All sprinkler heads shall be set perpendicular to finish grade of the areas to be irrigated and shall be installed 6"-8" from buildings walls, or within 4" of pavement, curbs, or header edges.
- Drip system piping shall consist of a rigid schedule 40 PVC pipe distribution system connecting drip irrigated planter areas. Poly tubing or drip line shall be run off the rigid PVC in each planting area or island with a PVC to poly tubing adapter. No poly tubing shall run under pavement.
- Electrical power source at the controller location shall be provided by electrical contractor. Contractor shall verify location of controller prior to installation with owner.
- Provide and install all manufacturer's recommended surge and lightning protection equipment on all controllers.
- All lines shall slope to manual drains (see details). If field conditions necessitate additional drains, these drains shall be installed for complete drainage of the entire system. Provide a gravel sump under each drain. All drains shall be a minimum of 6" below grade.
- Upon completion and approval of irrigation system, irrigation contractor to provide the owner with two sets of drawings indicating actual location of piping, valves, sprinkler heads, wiring, and zones.
- An irrigation zone map shall be provided in a protective jacket and be kept with the main irrigation controller. The map shall show all approved irrigation and include all zone valve locations.
- It shall be the responsibility of the sprinkler contractor to demonstrate to the Owner the proper winterization and start-up procedures for the entire system prior to final payment.

VALVE SCHEDULE

VALVE STATION	VALVE SIZE	IRRIGATION TYPE	FLOW (GPM)	PSI	PSI @ POC	PRECIP. RATE
1	1-1/2"	Turf Spray	18.61	34.55	37.59	1.74 in/h
2	1-1/2"	Turf Spray	19.25	34.52	35.83	3.45 in/h
3	1-1/2"	Turf Spray	16.97	34.55	35.57	3.45 in/h
4	1-1/2"	Turf Spray	13.98	34.22	34.9	3.4 in/h
5	1"	Area for Drip Emitters	4.63	34.0	34.04	1.04 in/h
6	1"	Area for Drip Emitters	2.96	32.08	32.08	0.82 in/h



Know what's below.
Call before you dig.

Irrigation Plan

Fiiz Drinks

30 North 400 East Street
Santaquin City, Utah

ANDERSON WAHLEN & ASSOCIATES
2010 North Redwood Road, Salt Lake City, Utah 84116
(801) 521-8525 - aw@engineering.net



14 May, 2021

SHEET NO.

L2.1