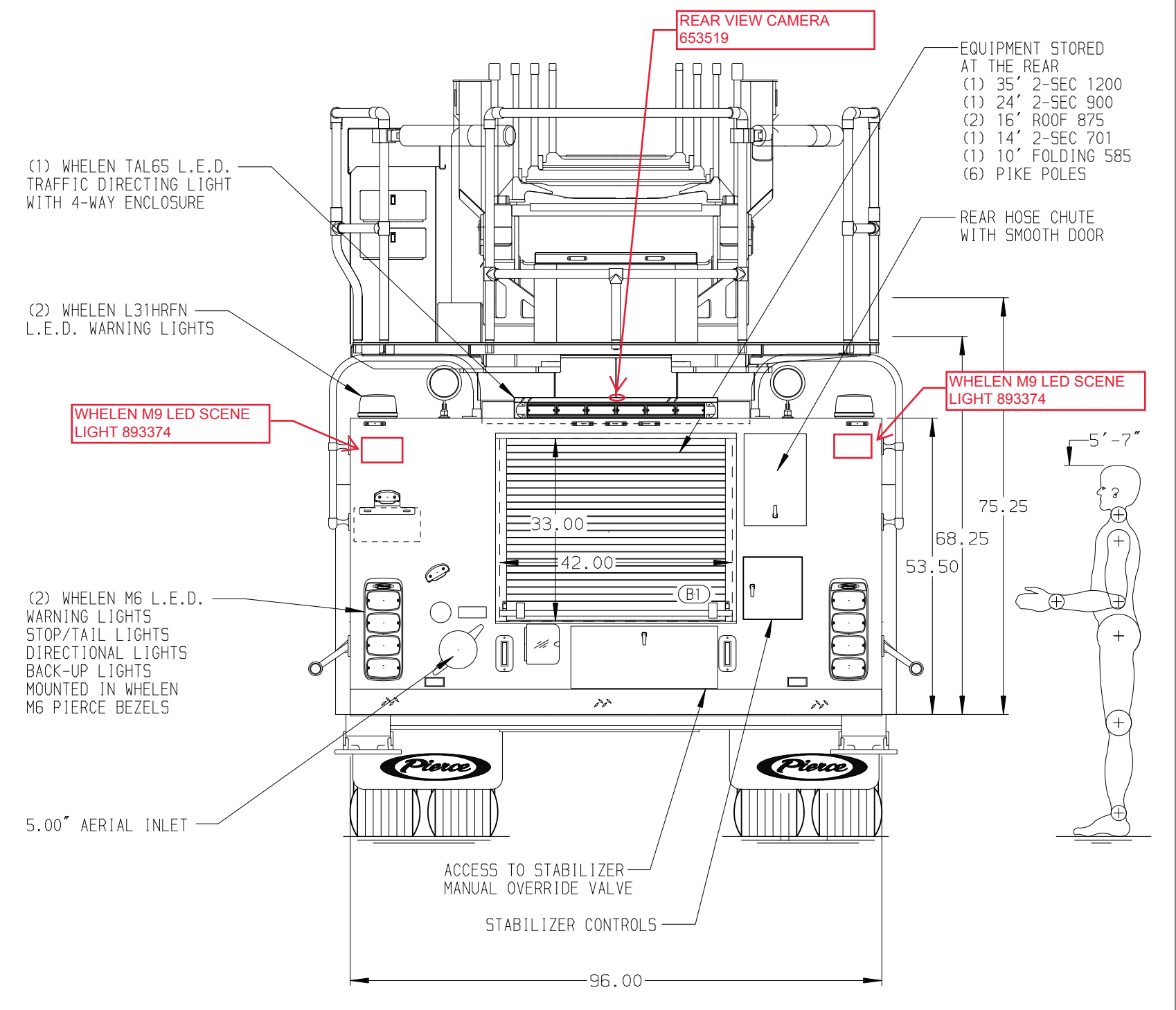
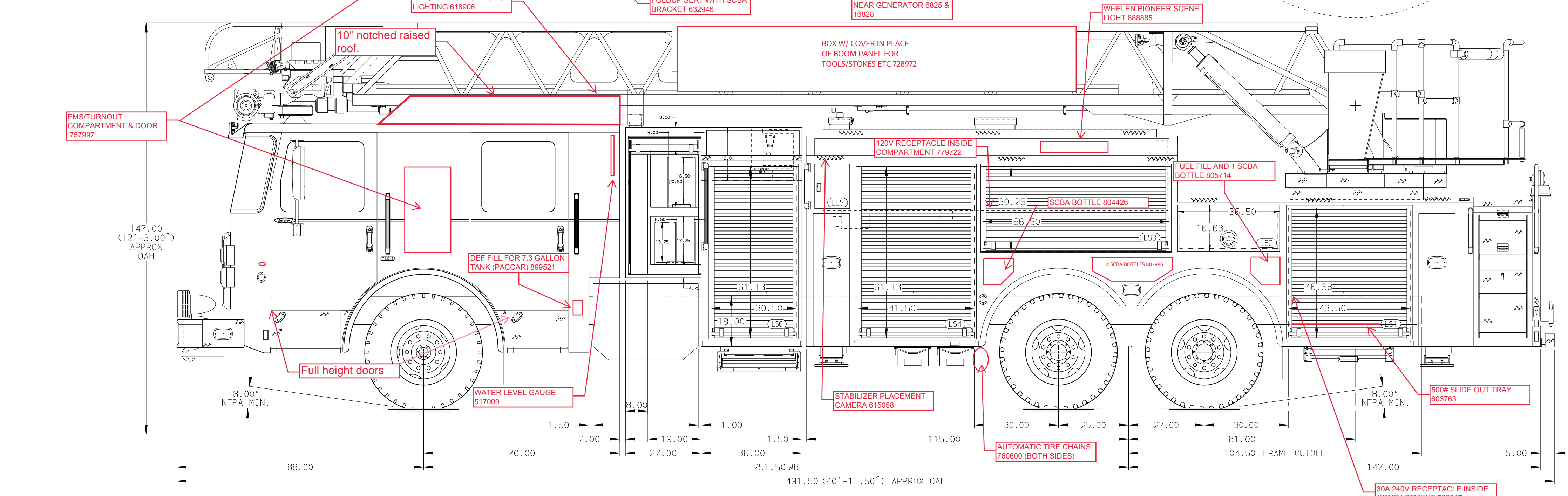
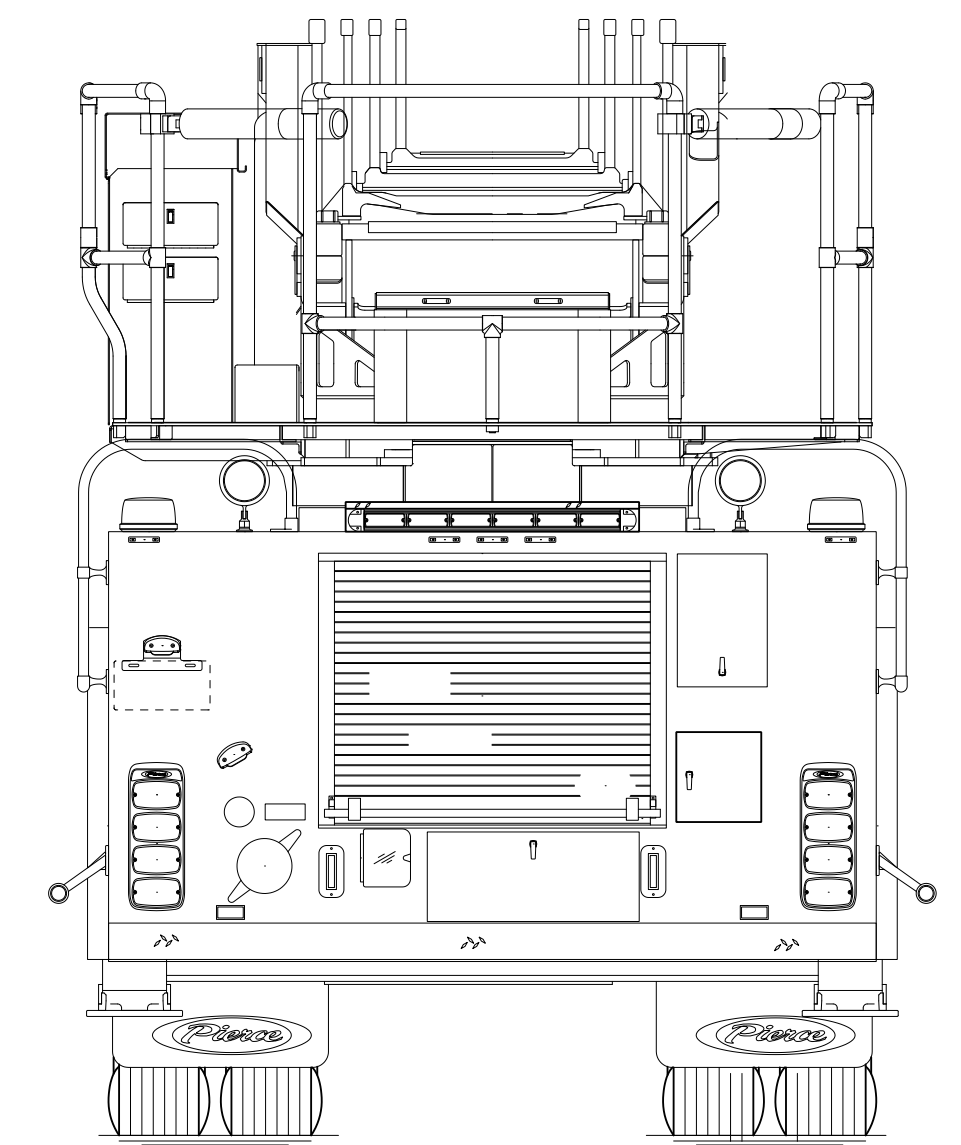
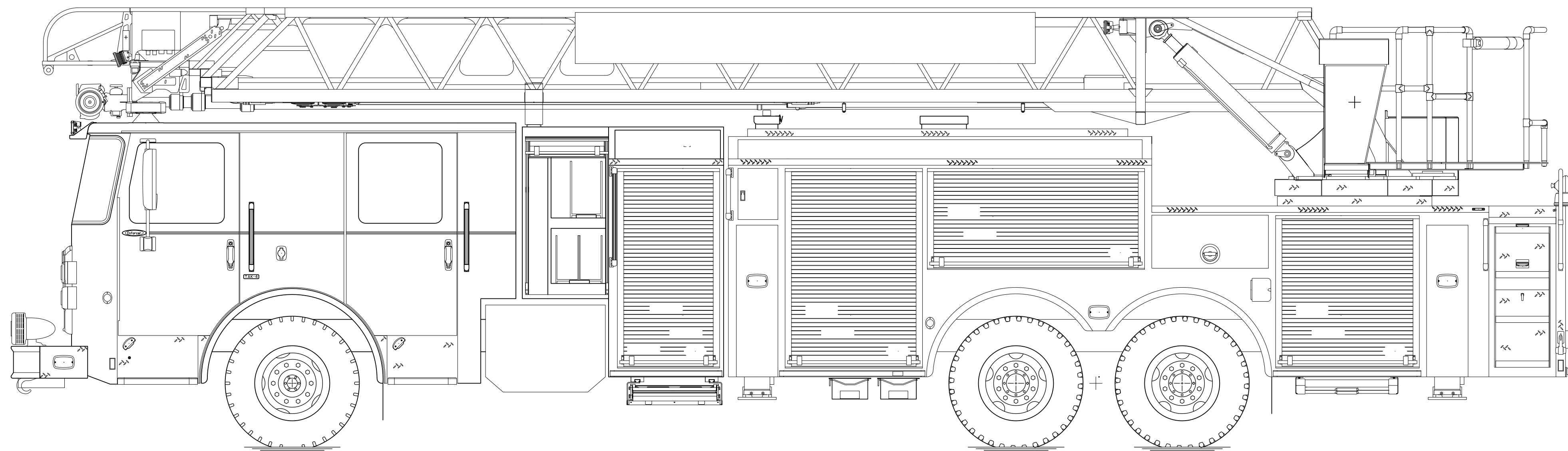
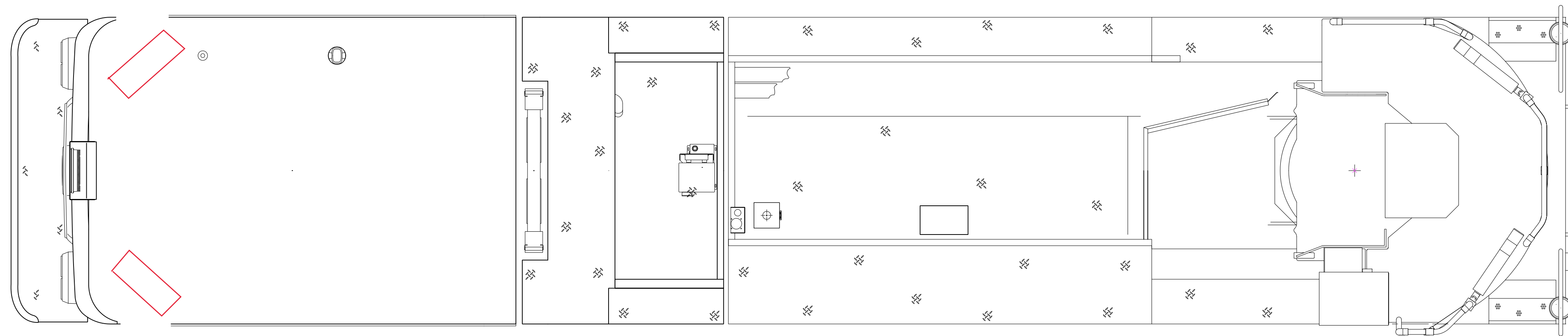
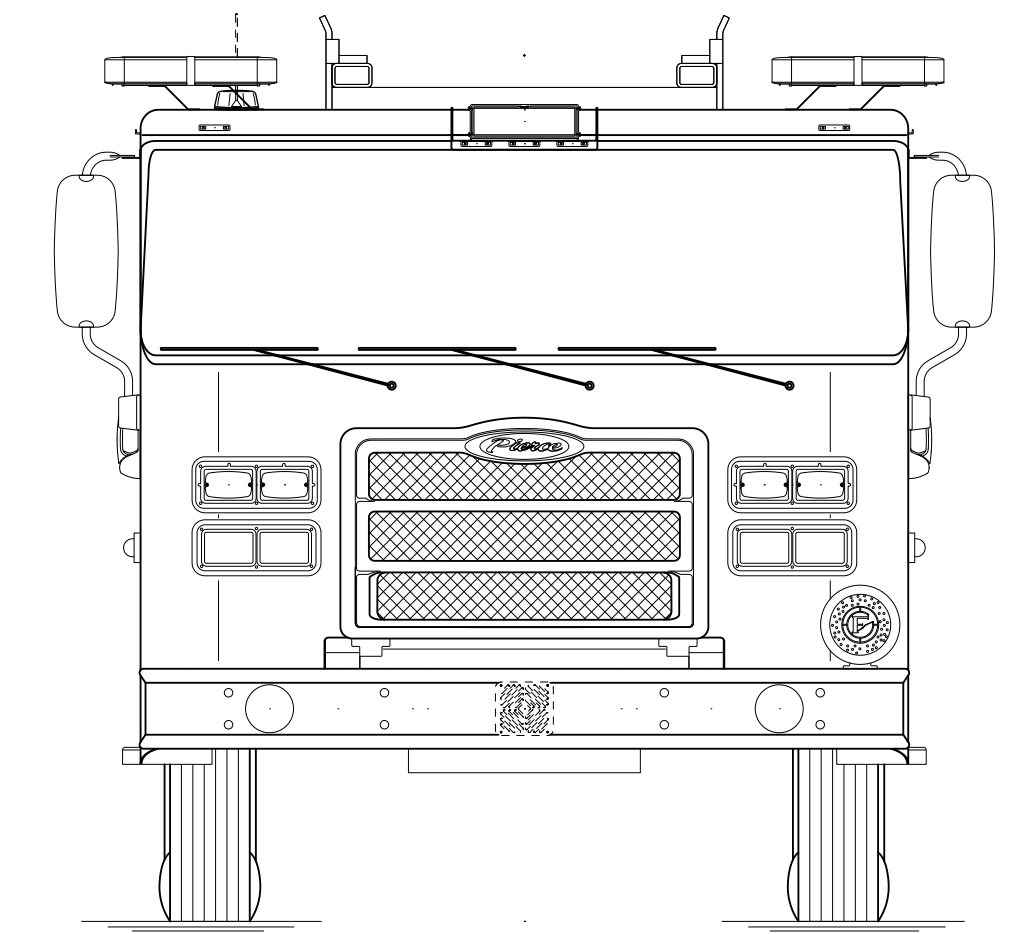
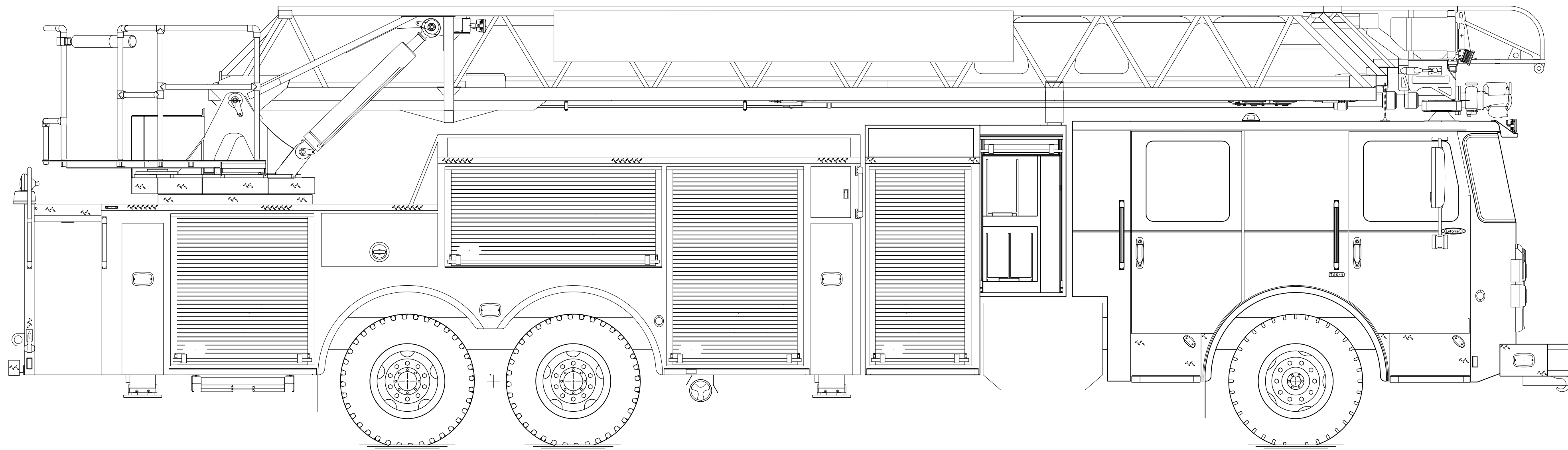


| BODY                                    | WATER TANK                         |
|---|------------------------------------|
| 107' ASL Tandem Axle Aluminum Body PUC  | 500 Gallon Notched Poly Water Tank |
| COMPT, LEFT SIDE FRONT                  |                                    |
| FH/FD RollUp Forward w/o Chute          |                                    |
| COMPT, LEFT SIDE REAR                   |                                    |
| FH/FD RollUp and Lift-up Rearward       |                                    |
| COMPT, RIGHT SIDE FRONT                 |                                    |
| Full Height RollUp Forward              |                                    |
| COMPT, RIGHT SIDE REAR                  |                                    |
| Full Height RollUp and Lift-up Rearward |                                    |



| CHASSIS  | CAB                          | AXLE, FRONT, CUSTOM    | TRANSMISSION                | PUMPHOUSE                 | CROSSLAYS, 1.50"            | SPEEDLAYS              | SAFETY                                  | CUSTOMER APPROVAL  | Pierce MANUFACTURING INC. |  | JOB NO.    |
|--|------------------------------|------------------------|-----------------------------|---------------------------|-----------------------------|------------------------|---|--------------------|---------------------------|--|------------|
| Enforcer Chassis, PUC  | 7000 Enforcer Cab, PUC       | 19,500 Lb TAK-4 Axle   | Allison 6th Gen, 4000 EV5 P | Control Zone, PAL/PAP PUC | (2) 1.50", Poly Trays, 200' | GENERATOR              | Side Roll and Frontal Impact Protection | APPROVED BY: _____ |                           |  | -          |
| 510 HP Paccar MX13 Engine  | 19" Extended Stainless Steel | 48,000 Lb Meritor Axle |                             | 2000 GPM Pierce PUC       | (1) 2.50", Poly Tray, 200'  | Generator Not Required |   | DATE: _____        |                           |  | SCALE 1:24 |
| NOTE   |                              |                        |                             |                           |                             |                        |   |                    |                           |  |            |
| DIMENSIONS SHOWN ARE APPROXIMATE AND ARE SUBJECT TO MINOR DEVIATIONS AS MAY OCCUR OR BE NECESSARY IN CONSTRUCTION. MINOR DETAILS NOT SHOWN.  |                              |                        |                             |                           |                             |                        |   |                    |                           |  |            |
| 1. NO LIMITED RETRACTION REQUIRED<br>2. ONE 1.50" OUTLET WITH 2.00" PIPING AND SWIVEL LOCATED IN CENTER BUMPER TRAY.<br>3. SHOULDER RECEPTACLE WITH KUSSMALL SUPER AUTO-EJECT LOCATED ON DRIVER SIDE OF THE CAB<br>4. AIR INLET WITH DISCONNECT COUPLING IN THE DRIVER SIDE STEPWELL<br>5. BATTERY CHARGER LOCATED PER ORDER<br>6. BATTERY CHARGE INDICATOR LOCATED ON THE DRIVER SIDE SEAT RISER<br>7. ADJUSTABLE SHIELDS LOCATED PER ORDER<br>8. ONE FLOOR MOUNTED SLIDE-OUT TRAY LOCATED PER ORDER<br>9. 3.00" RAISED AERIAL PEDESTAL<br>10. LIFTING EYE ROPE RESCUE ATTACHMENT AT AERIAL TIP |                              |                        |                             |                           |                             |                        |   |                    |                           |  |            |
| REV  | DATE                         | BY                     | CH                          | CHASSIS DATA              |                             | TITLE                  | FOR                                     |                    | SHEET SIZE                |  | SHEET NO.  |
| -  | -                            | -                      | -                           | Pierce                    |                             | Santaquin Aerial       | D                                       |                    | 1 OF 1                    |  |            |





NOTE  
LAYOUT AND SIZES PROVIDED BY CUSTOMERS  
MAY VARY DUE TO AVAILABLE WORKING SPACE.

| COLOR LEGEND |                                 |
|--------------|---------------------------------|
| PINK         | LETTERING (VINYL OR REFLECTIVE) |
| ORANGE       | STRIPING (VINYL OR REFLECTIVE)  |
| GREEN        | GOLD LEAF                       |
| YELLOW       | CUSTOMER FURNISHED PRODUCT      |

**CUSTOMER APPROVAL**

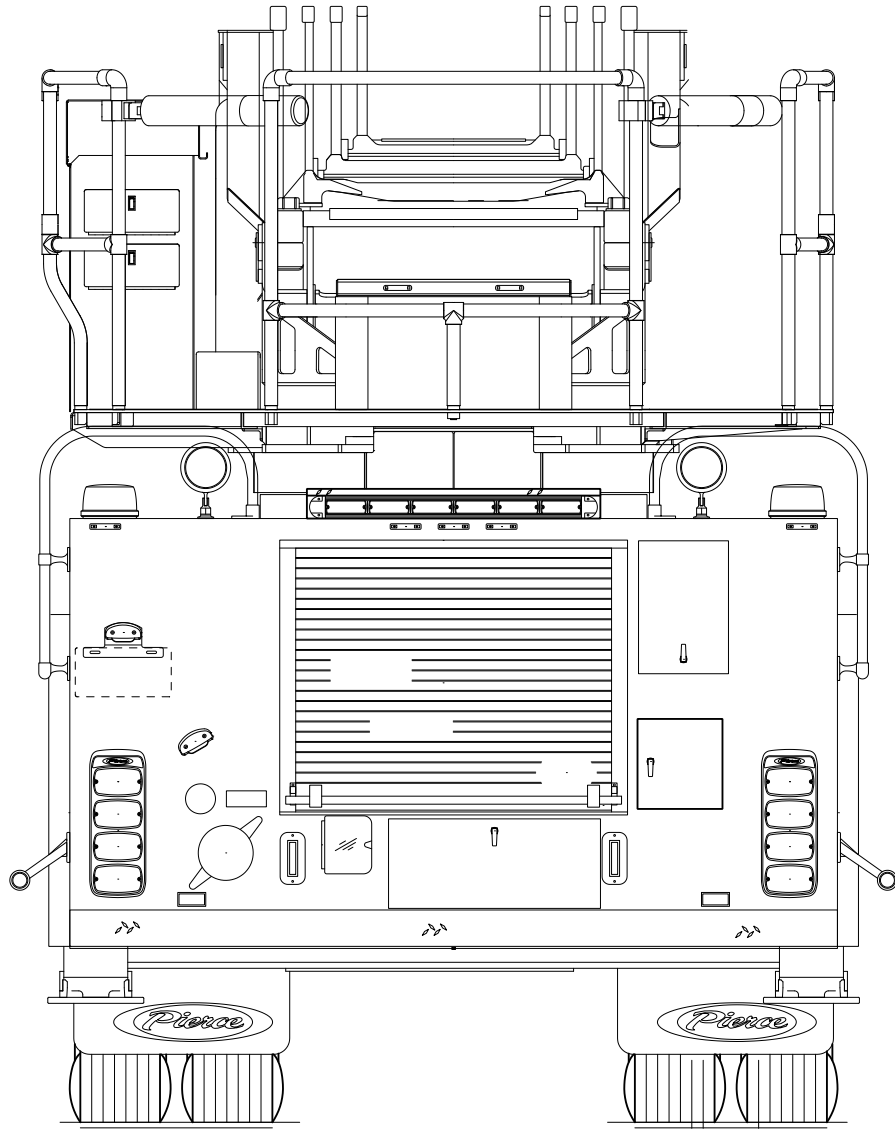
APPROVED BY: \_\_\_\_\_  
DATE: \_\_\_\_\_

| REV | DATE | BY | CH |
|-----|------|----|----|
|     |      |    |    |



|         |  |
|---------|--|
| TITLE   | LETTERING, STRIPING, AND PAINTING INSTRUCTIONS |
| FOR     | Santaquin Aerial                               |
| DWG NO. | LSP-LP   |

|            |        |
|------------|--------|
| JOB NO.    | -      |
| SCALE      | 1:24   |
| DATE       | -      |
| DRAWN BY   | -      |
| CHECKED BY | -      |
| SHEET SIZE | D      |
| SHEET NO.  | 1 of 1 |



**CUSTOMER APPROVAL**

APPROVED BY: \_\_\_\_\_

DATE: \_\_\_\_\_

NOTE: PLEASE REVIEW CHEVRON COVERAGE AND DOOR MATERIAL PER PULSE OPTIONS. NON-RELATED OR NON-CRITICAL MINOR DEVIATIONS MAY EXIST.



**MANUFACTURING INC.**

JOB NO.

-

SCALE

1:24

DRAWN BY

-

DATE

15FEB23

TITLE

CHEVRON DRAWING

-

FOR

Santaquin Aerial

-

DWG NO.

CHEVRON-CD

SHEET SIZE

A

SHEET NO.

1 OF 1