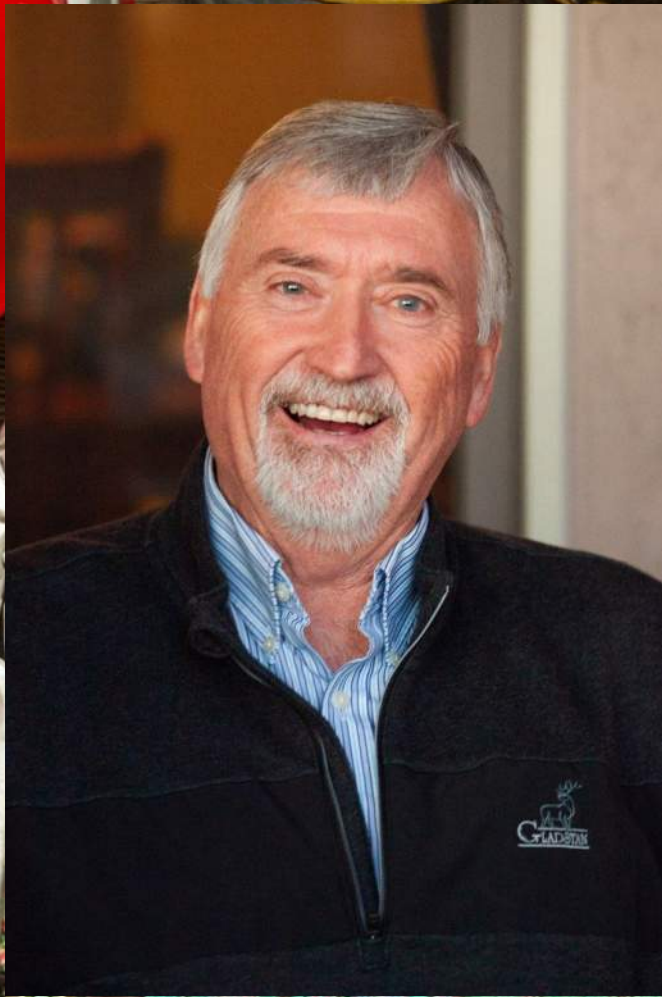
A photograph of the Santaquin City building at sunset. The building is a two-story brick structure with a central clock tower and several arched windows. The sky is a vibrant mix of orange, red, and purple. The text "Santaquin City Budget" is overlaid in a white serif font.

Santaquin City Budget

2025-2026



MAYOR
DAN OLSON



Welcome

FY2025-26
Budget Planning Session

February 8, 2025





Santaquin

UNDERSTANDING TECHNICAL PEOPLE

TECHNICAL PEOPLE
RESPOND TO QUESTIONS
IN THREE WAYS.



IT IS TECHNICALLY
IMPOSSIBLE.



MEANING: I DON'T FEEL LIKE
DOING IT.

IT DEPENDS...

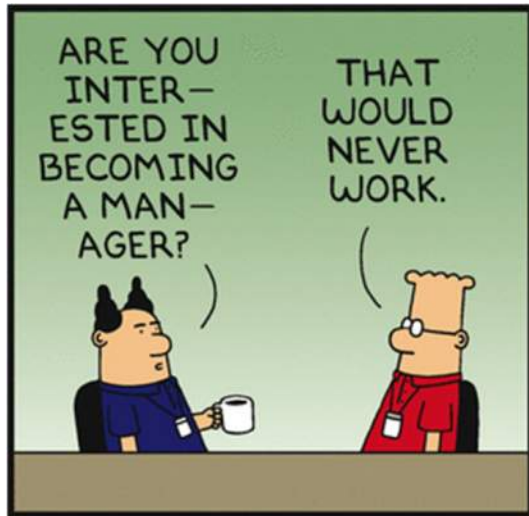


MEANING: ABANDON ALL HOPE OF
A USEFUL ANSWER.

THE DATA BITS ARE FLEXED
THROUGH A COLLECTIMIZER
WHICH STRIPS THE FLOW-
GATE ARRAYS INTO VIRTUAL
MESSAGE ELEMENTS...



MEANING: I DON'T KNOW.



Dilbert.com DilbertCartoonist@gmail.com



© 2015 Scott Adams, Inc. /Dist. by Universal Uclick





33 Months in as CM...



Saturday Agenda

- Budget Schedule
- Mission, Goals & Objectives
- Financial Goals & Projections
- Consolidated Review of Department Requests
- Review of Current Projects
- Review Future & Proposed Projects
- Prioritization Exercise
- As Time Permits:
 - Library Funding Efforts
 - “Parking Lot” Items
- Round Table



CITY MANAGER
NORM BEAGLEY



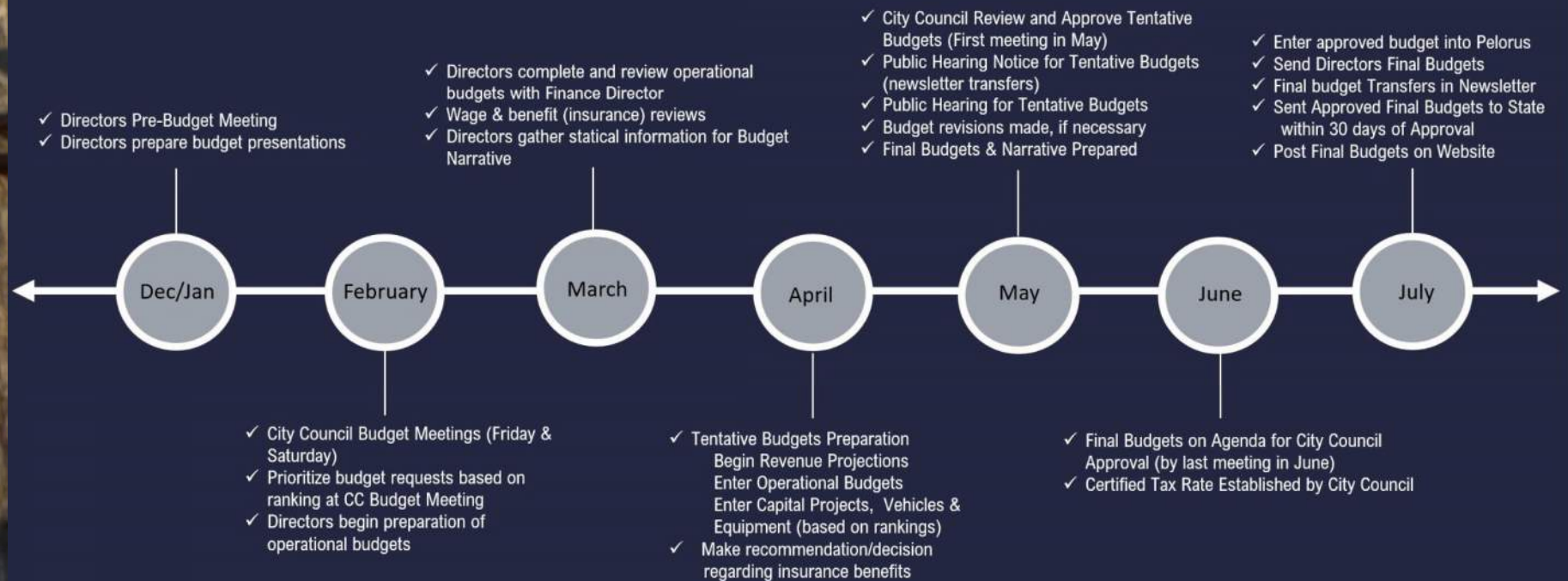
Parking Lot Reminder

- “Parking Lot”



BUDGET PROCESS TIMELINE

FY 2025-2026



* Budget Process Timeline is adjusted for TNT



Mission Statement

The mission of Santaquin City is to provide for a strong, positive civic image and quality of life for people who live and work in Santaquin City; by providing guidelines and standards that ensure the orderly and balanced distribution of growth, sound fiscal and economic investment and preservation of the open and rural environment in a clean attractive physical setting.



Santaquin

Preserving our agricultural heritage while developing a clean, safe, fun, family-oriented community through well-planned growth and fiscal responsibility

Provide Quality City Services

- Build a well planned and reliable infrastructure
- Maintain our valuable facilities
- Provide affordable quality leisure services

Promote and Support Economic Development

- Strategically plan for growth
- Retain and expand existing businesses
- Maintain fair and competitive development fees and incentives
- Foster job creation

Ensure Proactive Regional Collaboration

- Encourage membership and leadership in decision making bodies
- Be a voice of involvement in local, State and Federal government affairs

Maintain a Sustainable Budget

- Ensure the responsible use of resources
- Encourage a highly motivated and well-trained municipal workforce
- Encourage varied revenue streams
- Enhance capital facility and replacement planning
- Ensure the highest level of safety of our employees

Promote Community Involvement

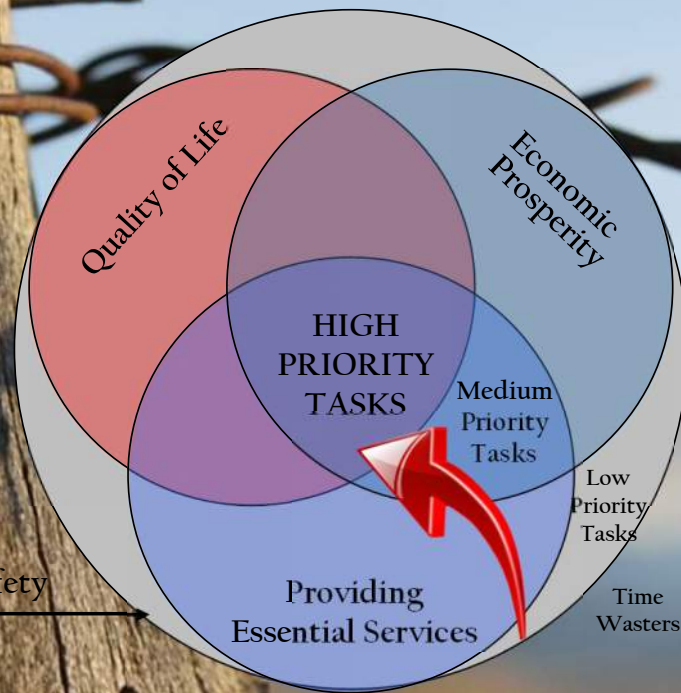
- Inspire pride and ownership in neighborhoods, businesses, and gathering places
- Focus on communication and transparency
- Promote and encourage diverse public events
- Provide meaningful service opportunities and celebrate volunteer efforts

Ensure Public Health and Safety

- Enhance safety, manage hazards, and increase community-wide emergency preparedness
- Provide effective communication and education regarding natural and man-made threats

Establishing & Prioritizing Goals

Goals of the City should be based on a balanced approach of providing safety and security, essential services, economic prosperity and a high quality of life as outlined in the General Plan. Tasks should be prioritized based on the number of overlapping goals they support.



February 3, 2024

Housing units built within Santaquin City (over 5 Calendar Years)

	Multi Family	Single Family
2019:	93	138
2020:	105	325
2021:	277	294
2022:	118	146
2023:	69	115
2024:	108	160
Total:	770	1,178


For a total of 1,948 housing units added since the end of 2018 (CY)

That represents a 61% increase in homes compared to the then existing homes in 2018 (6 years)

(from 3,168 housing units at the end of 2018 to 5,418 housing units in 2024)

Santaquin Statistics





Santaquin has available

1,379 housing units are currently approved (Some form of “Vesting”/”Entitlement”)

614 of which building permits that could start building within 2 weeks

That represents a 20% increase in the number of housing from what is currently existing today
(02/07/25)

(from 5,418 housing units at the end of 2024 to 6,441 housing units when built)

Santaquin Statistics



As of December 31, 2024

Housing units built within Santaquin City (over 16 Years)

Multi Family

Single Family

2009 to 2024

31% of City Growth

69% of City Growth

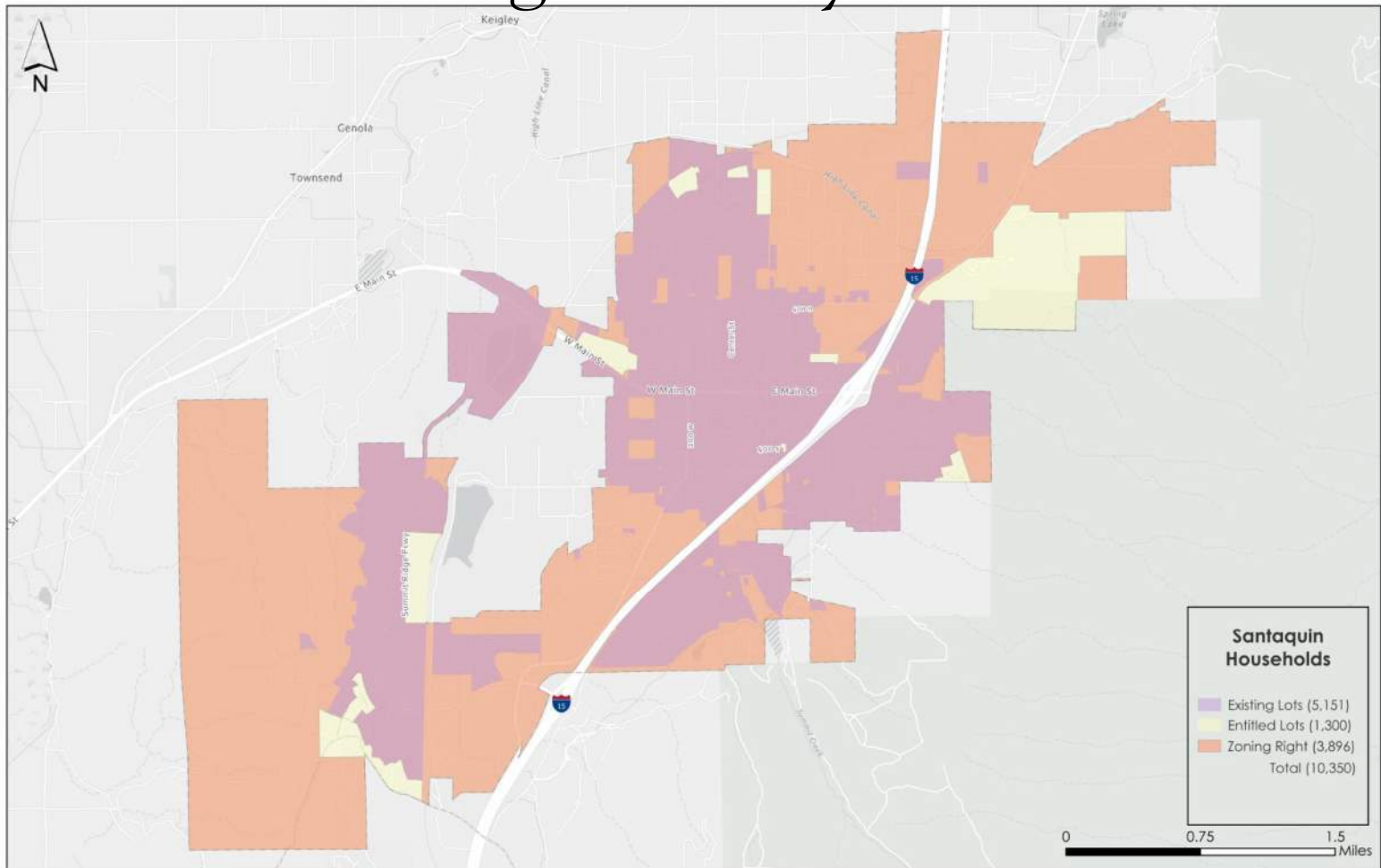
Total of 3,033 housing units added since the beginning of 2009

That represents a 134% increase in homes compared to what existed homes in 2009 (15 years)
(from 2,320 housing units at the beginning of 2009 to 5,418 housing units Dec 2024)

Santaquin Stats



“Right to Build” or “Right to City Infrastructure”



City Infrastructure Capacities



- 5,418 Current Units (Doors)
- 1,379 “Entitled Lots (By DA/Subd Approval/Etc.)
- 3,553 Additional Lots Per Zoning
- 10,350 total



Santaquin

City Infrastructure Culinary Water (CW)

- City currently holds ~56% of buildout water right needs
 - Covers both CW & PI
- CW Pumping: currently using ~ 70% of Current Pumping Capacity
 - Currently have ~ 1,250 ERC's Available for future use
- CW Storage: currently using ~ 68.5% of current Storage Capacity
 - Currently have ~ 1,250 ERC's Available for future use



City Infrastructure Pressure Irrigation (PI)



- PI Pumping: currently using ~
58% of Current Pumping Capacity
 - Currently have ~ 1,907 ERU's Available for future use
- PI Storage: currently using ~
68% of current Storage Capacity
 - Currently have ~ 1,907 ERU's Available for future use

City Infrastructure Sewer (Treatment)

- Treatment currently using ~ 65% of Current Treatment Capacity
 - (with Significant internal upgrades)
(\$12M Impact Fees)
- Currently have ~ 3,050 ERU's Available for future use
 - (has an effect on future growth potential)
 - But, we can't just "close the gate"



Financial Goals

- Emergency Reserve Funding – Full 35% Funding (Currently ~ 21.5%)
 - \$1.724M
- General Fund Independence from Enterprise Fund Transfers
- Maintain Operational Growth Funding Less than Revenue Growth
- Capital Replacement Reserve Funding
- Lowering Debt

Property Taxes

\$842K (Dec 21)
\$966K (Dec 22)
\$1.566M (Dec 23)
\$1.471M (Dec 24)
6%- Last Year

Sales Taxes

\$1.212M (Dec 21)
\$1.461M (Dec 22)
\$1.641M (Dec 23)
\$1.759M (Dec 24)
8.2%+ Last Year

Utility Fees

\$2.64M (Dec 21)
\$3.04M (Dec 22)
\$3.261M (Dec 23)
\$3.742M (Dec 24)
14.7%+ Last Year

Impact Fees

\$3.74M (Dec 21)
\$631K (Dec 22)
\$1.45M (Dec 23)
\$1.99M (Dec 24)
38% + Last Year

Building Permits

\$1.036M (Dec 21)
\$251K (Dec 22)
\$524K (Dec 23)
\$590K (Dec 24)
12.6% + Last Year

Revenue Actuals





SRC 7

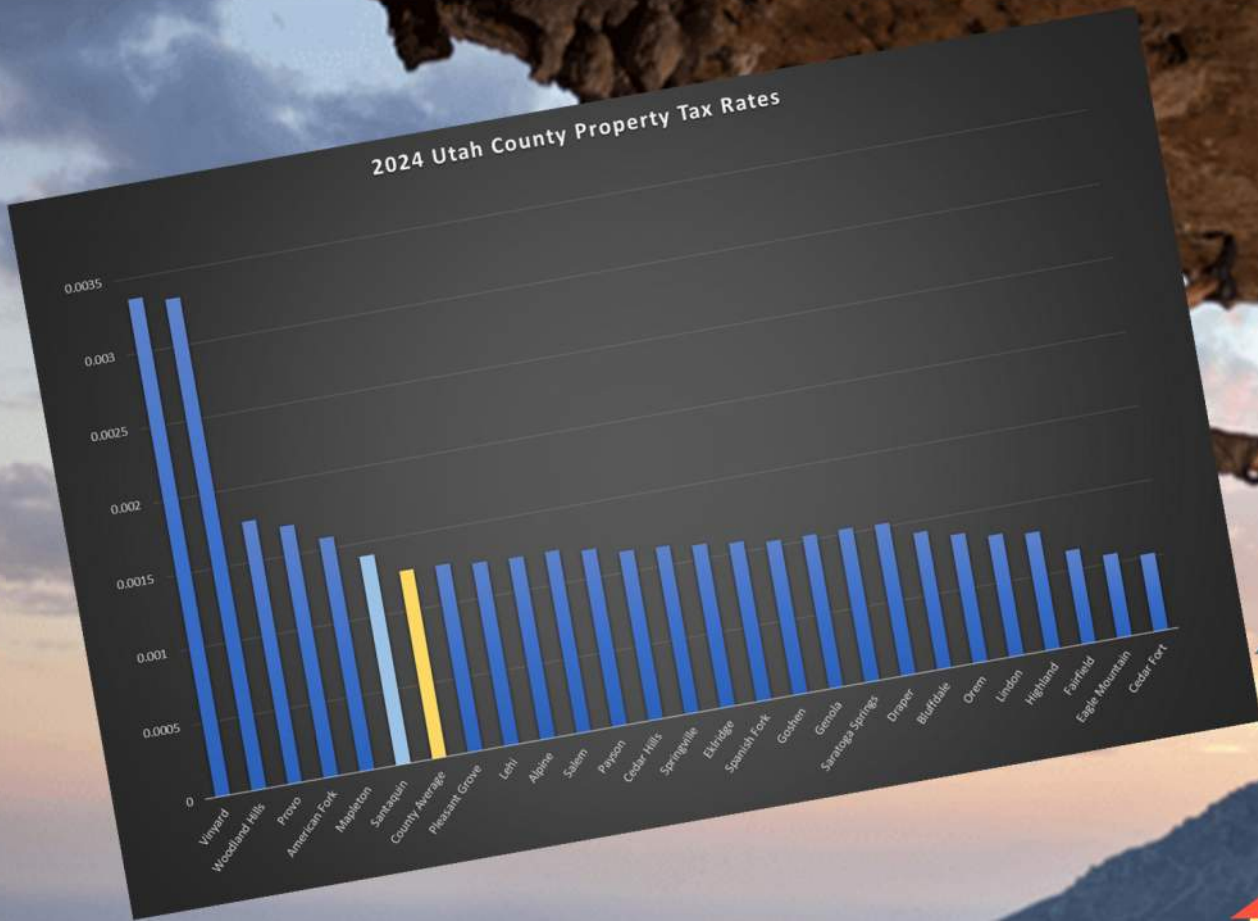


Projects
Payoff Debt
Outright Purchase of Equipment

Employees (Wages)
Debt Payments
Utilities & Supplies
Equipment Vehicle Lease

One Time Vs. Recurring





TAXES
FEES

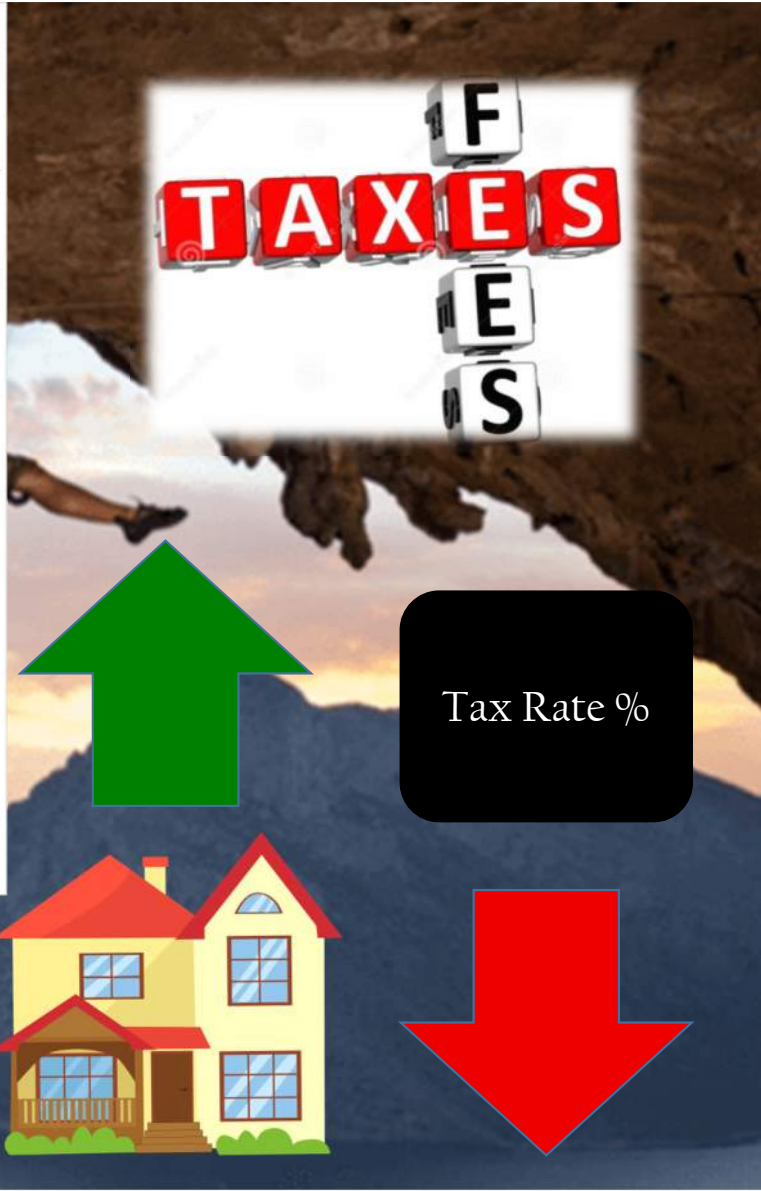
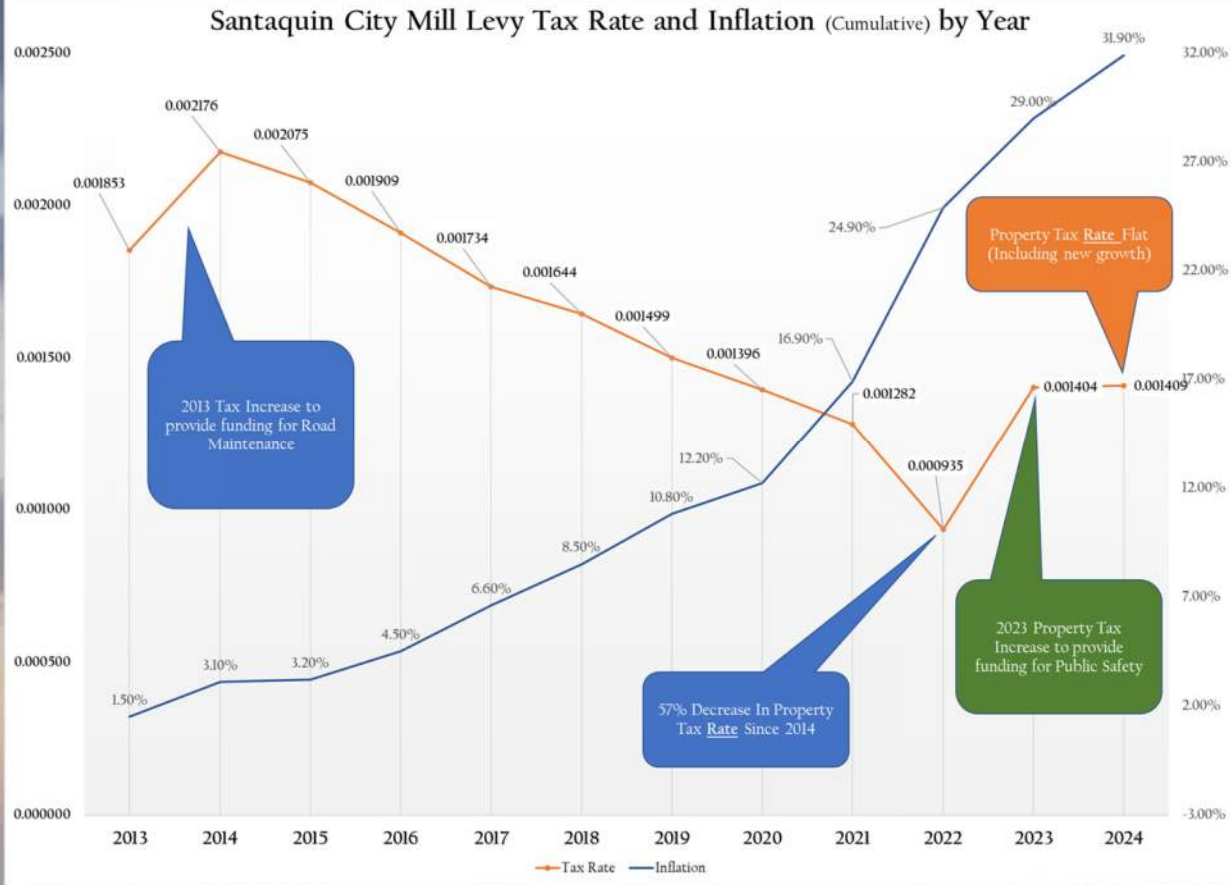


Tax Rate %



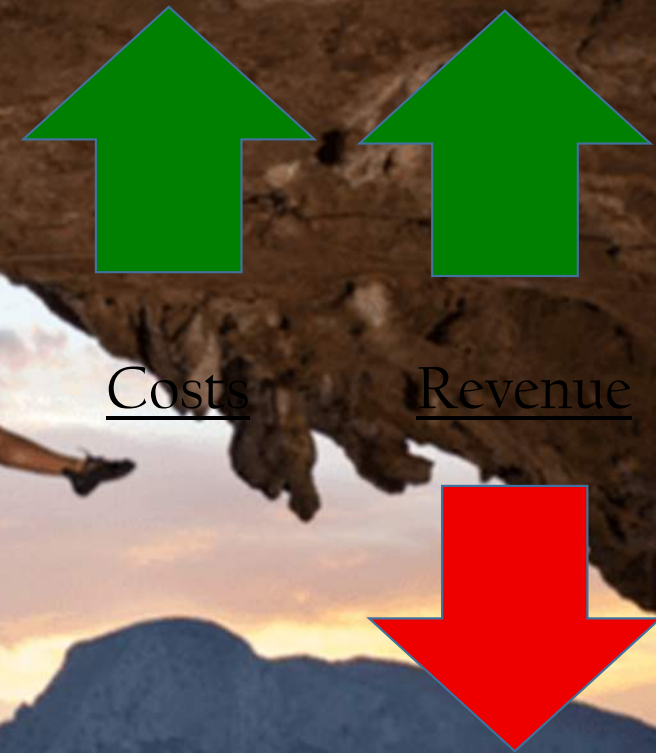
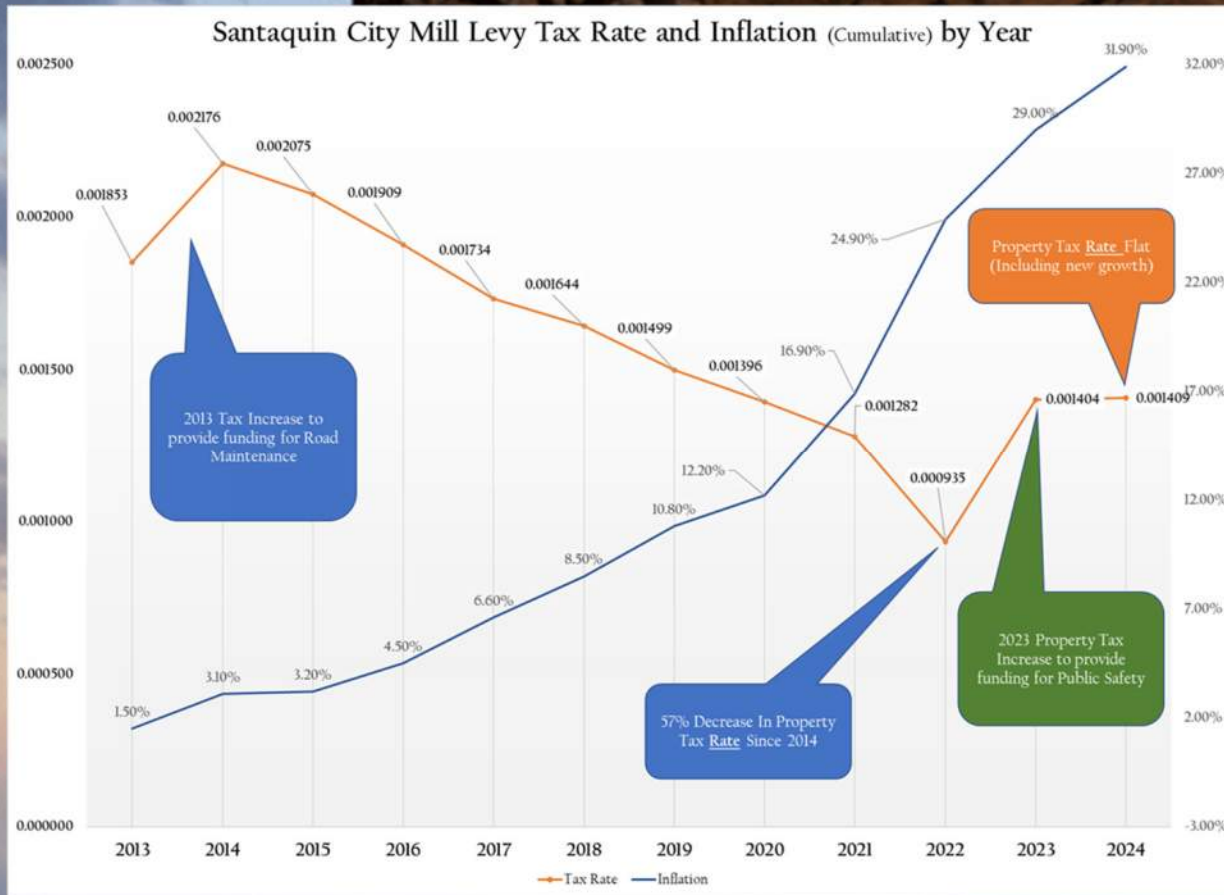
Revenue Sources: Taxes vs. Fees

Santaquin



Santaquin

Taxes vs. Fees



Inflation, Costs, & Revenues





Taxes

(Property &
Sales Taxes)



Fees

(Water, PI,
Sewer)



Reserves

(Rainy Day)



Services

(PS, PW,
Roads,
Equipment,
Staff)



Revenue Vs Expenditures



Break Time

A silhouette of a person rappelling down a dark rock face against a vibrant sunset sky with orange and blue clouds. The person is positioned on the right side of the frame, holding onto the rock with one hand and a rope with the other. The sky transitions from a deep blue at the top to a bright orange and yellow near the horizon.

Consolidated Review of all Departmental Requests



FY2025-2026

FULL TIME PERSONNEL REQUESTS - GENERAL FUND

Position	Department	Funding	Estimated Cost	Rank (1-10)
Full-time - Police Officer (NEW)	Public Safety - Police	General Fund	\$107,000	
Full-time - Police Officer (NEW)	Public Safety - Police	General Fund	\$107,000	
Full-time - Children's Librarian (NEW)	Community Services - Library	General Fund	\$71,000	
Full-time - Parks & Grounds Maintenance (PT to FT)	Public Works - Parks/Cemetery/Bldgs	General Fund	\$43,000	
Full-time - Parks & Grounds Maintenance (NEW)	Public Works - Parks/Cemetery/Bldgs	General Fund	\$60,000	
Full-time - Administrative Battalion Chief (NEW)	Public Safety - Fire	Transfer to Fire from General Fund	\$135,000	
Full-time - Fire Captian (NEW)	Public Safety - Fire	Transfer to Fire from General Fund	\$120,000	
Full-time - Fire Captian (NEW)	Public Safety - Fire	Transfer to Fire from General Fund	\$120,000	
Full-time - Fire Captian (NEW)	Public Safety - Fire	Transfer to Fire from General Fund	\$120,000	
Current Employees - COLA Increase starting in Oct	All Departments	Enterprise Funds/General Fund	\$125,000	
TOTAL - New FT Personnel Requests - General Fund			\$1,008,000	

FULL TIME PERSONNEL REQUESTS - ENTERPRISE FUNDS/COMBINED FUNDS

Position	Department	Funding	Estimated Cost	Rank (1-3)
Full-time Public Works Operator (PT to FT)	Public Works - Water/PI/Sewer/Streets	Enterprise Funds/General Fund	\$16,000	
Full-time Public Works Operator (New)	Public Works - Water/PI/Sewer/Streets	Enterprise Funds/General Fund	\$66,000	
Full-time PW Admin Assistant (PT to FT)	Public Works - Water/PI/Sewer/Streets	Enterprise Funds/General Fund	\$35,000	
TOTAL - New FT Personnel Requests - Enterprise Funds			\$117,000	

PERSONNEL ONGOING

Position	Department	Funding	Estimated Cost	Rank (1-3)
Full-time - Engineer/Project Manager (Carry Over)	CD -Engineering	General Fund	\$150,000	X
Employee Insurance Benefits (15% Increase same plan structure)	All Departments	Enterprise Funds/General Fund	\$120,000	X
TOTAL - Personnel Ongoing			\$270,000	



PART TIME PERSONNEL REQUESTS - GENERAL FUND

Position	Department	Funding	Estimated Cost	Rank (1-15)
Part-time - Library Clerk (4 Additional Hours)	Community Services - Library	Transfer to CS-Library from General Fund	\$4,000	
Part-time - Museum Director (NEW)	Community Services - Museum	Transfer to CS-Museum from General Fund	\$27,500	
Part-time - Museum Intern (NEW)	Community Services - Museum	Transfer to CS-Museum from General Fund	\$5,000	
Part-time - Sports Program Assistant (NEW)	Community Services - Sports	Transfer to CS-Sports from General Fund	\$24,000	
Part-time - Recreation Aide (8 Additional Hours)	Community Services - Admin	Transfer to CS-Admin from General Fund	\$5,700	
Part-time - Seniors Staff (8 Additional Hours)	Community Services - Seniors	Transfer to Seniors from General Fund	\$5,700	
Seasonal - Additional Parks & Grounds Mnt (NEW)	Public Works - Parks/Cemetery/Bldgs	General Fund	\$6,750	
Seasonal - Additional Parks & Grounds Mnt (NEW)	Public Works - Parks/Cemetery/Bldgs	General Fund	\$6,750	
Seasonal - Additional Parks & Grounds Mnt (NEW)	Public Works - Parks/Cemetery/Bldgs	General Fund	\$6,750	
Seasonal - Additional Parks & Grounds Mnt (NEW)	Public Works - Parks/Cemetery/Bldgs	General Fund	\$6,750	
Seasonal - PW Maintenance - Streets (NEW)	Public Works - Steets	General Fund	\$15,000	
On-Call - Firefighters (From 2 to 3)	Public Safety - Fire	Transer to Fire from General Fund	\$8,000	
On-Call - Firefighters (From 3 to 4)	Public Safety - Fire	Transer to Fire from General Fund	\$8,000	
On-Call - EMS (From 2 to 3)	Public Safety - Fire	Transer to Fire from General Fund	\$7,100	
Part -Time - Admin Asst - Passport Agent	Administrative Services - Admin	General Fund	\$33,600	
TOTAL - New PT Personnel Requests - General Fund			\$170,600	

PART TIME PERSONNEL REQUESTS - ENTERPRISE FUNDS/COMBINED FUNDS

Position	Department	Funding	Estimated Cost	Rank
NEW	Public Works - Water/PI	Water/PI Enterprise Funds	\$15,000	
TOTAL - New PT Personnel Requests - Enterprise Funds			\$15,000	



CAPITAL EQUIPMENT REQUESTS - GENERAL FUND

Type of Equipment	Department	Funding	Estimated Cost	Rank (1-13)
Recreation Activity Building Fitness Equipment	CS/Sports - Classes	Transfer to Capital Vehicles/Equipment from General Fund	\$91,000	
Mini Excavator & Trailer (Shared CS & PW)	CS & PW - Parks	Transfer to Capital Vehicles/Equipment from General Fund	\$85,000	
Dump Trailer	Public Works - Parks	Transfer to Capital Vehicles/Equipment from General Fund	\$12,000	
Trenching Attachment	Public Works - Parks	Transfer to Capital Vehicles/Equipment from General Fund	\$8,000	
Top Dresser	Public Works - Parks	Transfer to Capital Vehicles/Equipment from General Fund	\$25,000	
Crack Sealer	Public Works - Streets	Transfer to Capital Vehicles/Equipment from General Fund	\$90,000	
Carpet Cleaner	Public Works - Gov Bldgs	Transfer to Capital Vehicles/Equipment from General Fund	\$6,000	
PPE Replacement (Increase annual by \$5,200 operational)	Public Safety - Fire	Transfer to Fire Fund from General Fund	\$5,200	
(2) Pumps & (6) Ventilators (Possible Financing 15K)	Public Safety - Fire	Transfer to Capital Vehicles/Equipment from General Fund	\$60,000	
(2) Large Bay Fans	Public Safety - Fire	Transfer to Capital Vehicles/Equipment from General Fund	\$14,000	
Equipment Replacement Program (Annual Set-Aside \$50K-\$75K)	Public Safety - Fire	Transfer to Capital Vehicle & Equipment from General Fund	\$75,000	
Radio Replacement Program (Annual Set-Aside \$4K-\$5K)	Public Safety - Fire	Transfer to Capital Vehicle & Equipment from General Fund	\$5,000	
Passport Equipment	Admin Services - Admin	Transfer to Capital Vehicle & Equipment from General Fund	\$6,000	
TOTAL - New Equipment Request - General Fund			\$482,200	

CAPITAL EQUIPMENT - ENTERPRISE FUNDS/OTHER FUNDS

Type of Equipment	Department	Funding	Estimated Cost	Rank (1-2)
20' Trench Box	Public Works - Water/Sewer	Transfer to Capital Projects from Enterprise Funds	\$20,000	
PI Auto Flushing Valves - 4 Parks	Public Works - PI	Transfer to Capital Vehicles/Equipment from General Fund	\$20,000	
TOTAL - New Equipment Requests - Enterprise Funds			\$40,000	

CAPITAL VEHICLE REQUESTS - GENERAL FUND

Type of Vehicle	Department	Funding	Estimated Cost	Rank (1-8)
(1) Police Ford F-150 Trucks	Public Safety - Police	Transfer to Capital Vehicles/Equipment from General Fund	\$71,000	
(1) Police Ford F-150 Trucks	Public Safety - Police	Transfer to Capital Vehicles/Equipment from General Fund	\$71,000	
(1) Police Ford F-150 Trucks	Public Safety - Police	Transfer to Capital Vehicles/Equipment from General Fund	\$71,000	
(1) Police Ford F-150 Trucks	Public Safety - Police	Transfer to Capital Vehicles/Equipment from General Fund	\$71,000	
Used 12 Person Van	CS - Admistration	Transfer to Capital Vehicles/Equipment from General Fund	\$35,000	
Fire Ford F-250 3/4 Ton Truck	Public Safety - Fire	Transfer to Capital Vehicles/Equipment from General Fund	\$75,000	
Fire Ford F-250 3/4 Ton Truck	Public Safety - Fire	Transfer to Capital Vehicles/Equipment from General Fund	\$75,000	
Building Inspection - Ford Maverik Hybrid AWD	CD - Building	Transfer to Capital Vehicles/Equipment from General Fund	\$32,000	
TOTAL - New Vehicle Requests - General Fund			\$501,000	

CAPITAL VEHICLES REQUESTS - ENTERPRISE FUNDS/OTHER FUNDS

Type of Vehicle	Department	Funding	Estimated Cost	Rank (1-4)
Used 10-Wheeled Dump Truck (\$100K to \$150K)	Public Works - Sewer	Transfer to Capitial Projects from Enterprise Funds	\$150,000	
(1) Used Utility Truck	Public Works - Wtr/Swr/Pl	Transfer to Capitial Projects from Enterprise Funds	\$50,000	
(1) Used Utility Truck	Public Works - Wtr/Swr/Pl	Transfer to Capitial Projects from Enterprise Funds	\$50,000	
Used Vactor Truck (\$300K to \$350K)	Public Works - Wtr/Swr/Pl	Transfer to Capitial Projects from Enterprise Funds	\$350,000	
TOTAL - New Vehicle Requests - Enterprise Funds			\$600,000	

CAPITAL VEHICLES ORDER REQUESTS - GENERAL FUND (WILL REQUIRE BONDING)

Type of Vehicle	Department	Funding	Estimated Cost	Y or N
Tactical Water Tender (Auth to Order - FY27-28 Financial Obligation)	Public Safety - Fire	Transfer to Capital Vehicles/Equipment from General Fund	\$850,000	
Engine/Pumper (Auth to Order - FY27-28 Financial Obligation)	Public Safety - Fire	Transfer to Capital Vehicles/Equipment from General Fund	\$1,300,000	
10-Wheeled Snowplow (Ordered - Financial Impact FY 27-28)	Public Works - Streets	Transfer to Capital Vehicles/Equipment from General Fund	\$285,000	X
TOTAL - New Vehicle Order Requests - General Funds			\$2,435,000	



Quick Review of
Current Projects and
Follow-Up Projects

Santaquin

FY2025-2026

Current Projects:

Rank	Description	Area	Estimated Cost
Pending	New City Hall – New Library Funding Efforts	Facilities	\$2.6M
Approved	Santaquin Peaks Industrial Park	CDRA	\$5+M
Approved	Ballfield Lights at Orchard Hills	Parks	\$410K



Current Projects:

Rank	Description	Area	Estimated Cost
Approved	NRCS – County Debris Basin Design	Engineering	Time Only (at this point)
Approved	NRCS – City Debris Basin(s) Design	Engineering	Time (Pass Through Dollars)
Approved	Main Street Widening	Engineering	\$17-18M (93% Pass Through)



Current Projects:

Rank	Description	Area	Estimated Cost
Non-City	I-15 Interchange Reconstruct	UDOT	N/A
Approved	Secondary (PI) Meter Replacement	Public Works	\$1.69M





Projects/Initiative Review


Santaquin

FY2025-2026

CAPITAL PROJECTS/INITATIVES - GENERAL FUND

Project Description	Department	Funding	Estimated Cost	Rank (1-7)
Santaquin Dowdle Puzzle	CS - Admin	Transfer to Capital Projects from General Fund	\$69,000	
New Library - Construction ONLY (no FFE)	CS - Library	Transfer to Capital Projects from GF/State Funding/Donations	\$2,100,000	
West Side Center Street Trail - Royal Land Dr to 770 N (\$210K - \$245K)	Public Works - Parks	Transfer to Capital Projects from General Fund	\$245,000	
Public Safety Building Remodel - Additional Living Space	Public Safety - Fire	Transfer to Capital Projects from General Fund	\$100,000	
Employee Evaluation Software - Annual Cost	Admin - All	Transfer to Capital Computers from GF/Ent Funds	\$7,000.00	
Employee Timekeeping Solution - Annual Cost	Admin - All	Transfer to Capital Computer from GF/Ent Fund	\$10,000.00	
Temporary Storage Building - Shared with PW	Public Safety - Fire & PW	Transfer to Capital Projects from General Fund	\$100,000	
TOTAL - Capital Projects Requests - General Fund			\$2,631,000	

PERSONNEL REQUESTS - ENTERPRISE FUNDS/OTHER FUNDS

Project Description	Department	Funding	Estimated Cost	Rank
Water Line Replacement - Ductile Iron (Annual Projects and/or Set Aside)	Public Works - Water	Water Enterprise Fund - Capital Projects	\$150,000	
Water Meter Replacement - Year 2 (Authorized in FY24-25)	Public Works - Water	Water Enterprise Fund - Capital Projects	\$175,000	X
Santaquin Main Street Widening - Year 2 (Carry Over Project)	CS - Engineering	Transfer from Capital Roads - Grant Funds	\$2,750,000	X
Santaquin Peaks Improvements - Phase III (Carry Over Project)	CS - Engineering	CDRA	\$500K-\$750K	X
TOTAL - Capital Projects Requests - Enterprise Funds			\$167,000	

CAPITAL PROJECTS/INITATIVES - REQUIRE BONDING/OUTSIDE FUNDING SOURCE

Project Description	Department	Funding	Estimated Cost	Rank
New Fire Station 142	Public Safety - Fire	Transfer to Capital Projects from General Fund	\$9,200,000	
TOTAL - Capital Projects Requests - General Fund - Bonding			\$9,200,000	



CAPITAL PROJECTS/INITIATIVES - IMPACT FEE ELIGIBLE

Project Description	Department	Funding	Estimated Cost	Rank
Water Impact Fees				
New Culinary Well location Study & Design - Carry Over from last FY	Public Works - Water	Water Impact Fees	\$240,000	X
Pressurized Irrigation Impact Fees				
PRV Connection to ULS Pipeline	Public Works - PI	PI Impact Fees	\$410,000	X
Sewer Impact Fees				
Design & Constructon of WRF Improvements - Carry Over from last FY	Public Works - Sewer	Sewer Impact Fees	\$8,000,000	X
Parks Impact Fee				Rank (1-8)
Recreation Activity Building - Phase II - Part A (HVAC, Elect, Plumbing, etc)	CS - Sports/Classes	Park Impact Fees	\$750,000	
City Center Block Development - Water Feature	Public Works - Parks	Park Impact Fees	\$145,000	
Skate Park - Select Location & Construction	Public Works - Parks	Park Impact Fees	\$450,000	
Centennial Park - Replace Playground Equipment (incr capacity \$150K to \$350K)	Public Works - Parks	Park Impact Fees/GF	\$350,000	
Harvest View Park - Future Phase Additional Ballfield or Soccer Field	Public Works - Parks	Park Impact Fees	\$1,000,000	
Trail - Center St to Canyon Rd	Public Works - Parks	Park Impact Fees	\$1,000,000	
Trail - Summit Ridge to Highland Dr	Public Works - Parks	Park Impact Fees	\$1,000,000	
Building for Equipment @ Cemetery - Phase II	Public Works - Cemetery	Park Impact Fees	\$25,000	
Cemetery Property Purchase (Repayment to GF - 4 YR Obligation)	Public Works - Cemetery	Park Impact Fees	\$330,000	X
TOTAL - New Capital Project Requests - Park Impact Fee Eligible			\$5,050,000	
Public Safety Impact Fees				
Public Safety Impact Fee Study	Community Dev	Public Safety Impact Fees	\$15,000	X
Fire Ladder Engine (Ordered - Financial Impact FY 27-28)	Public Safety - Fire	Public Safety Impact Fees	\$1,717,656	X
Storm Drain Impact Fees				
Property Acquisition - East Bench Debris Basins (Carry Over from last FY)	Public Works - Storm Water	Storm Water Impact Fee	\$2,000,000	X



I-15 Interchange & SR-198 Frontage Road

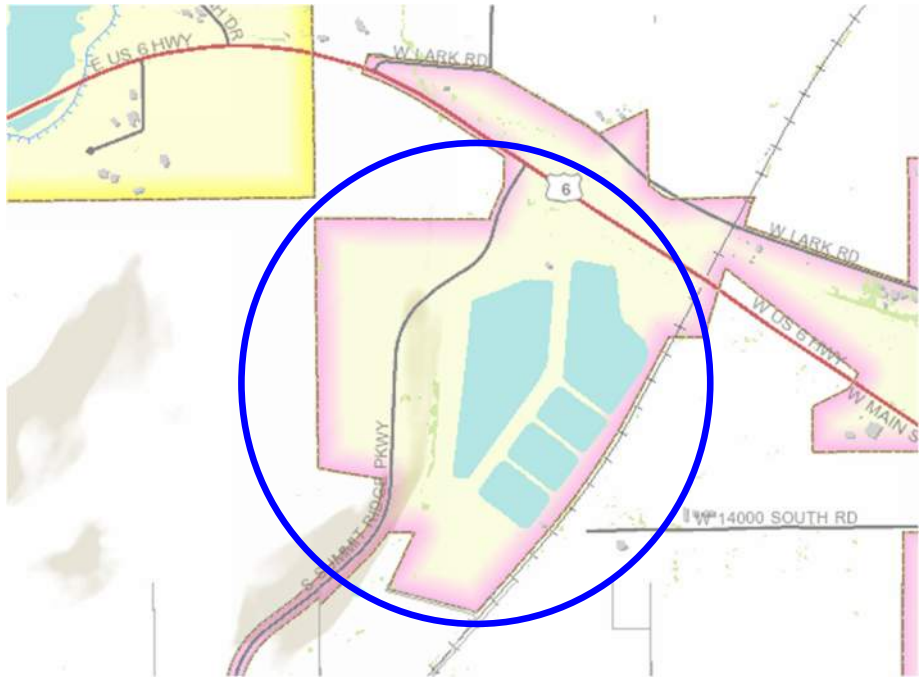


MOUNTAINLAND
ASSOCIATION OF GOVERNMENTS
Serving Summit, Utah, and Wasatch Cities & Counties





Developing Business Park



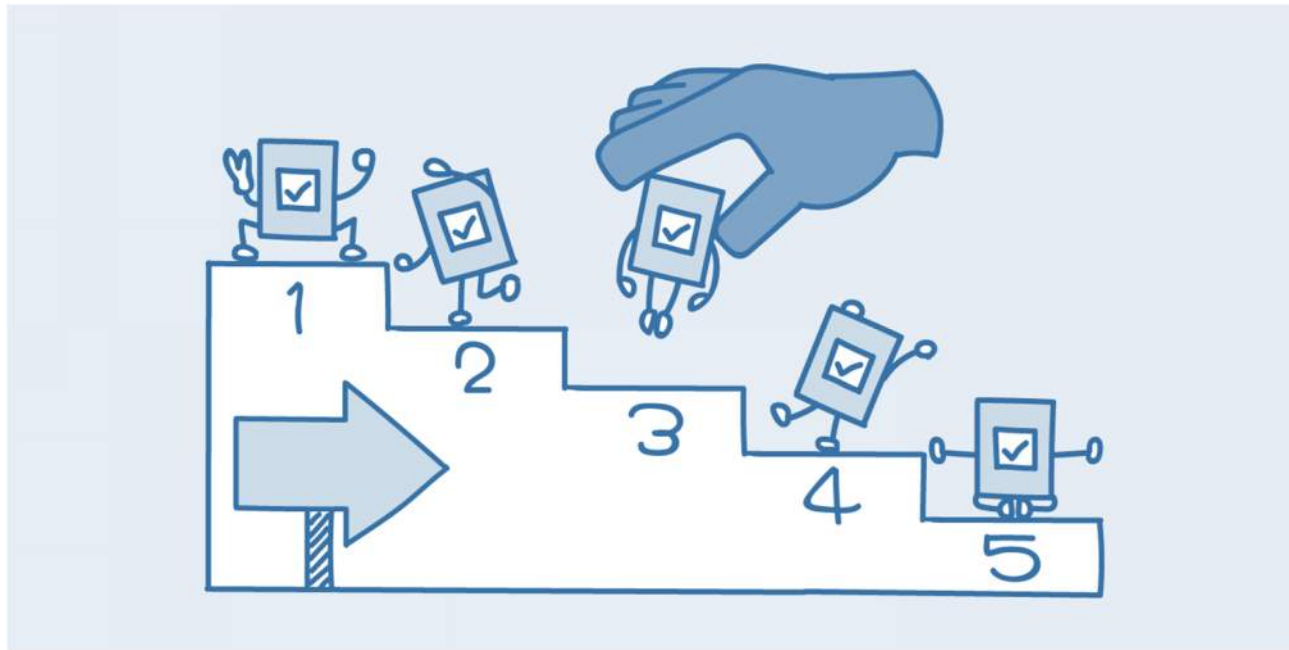
All Self-Funded
(Using Property Sale Proceeds)



Break Time

Library Funding Discussion

Directors/Council Prioritization Exercise



Financial Sustainability (Zions Bank Data)

“No Growth” Scenarios (Based off of 2021-2022 FY Actual Expenditures)

No Growth Scenarios

TABLE 1: NET GENERAL FUND REVENUES PER YEAR – NO GROWTH; HIGHER **4%** INFLATION RATES

	2024	2025	2026	2027	2028
General Fund Net Revenues per Year	(\$1,404,354)	(\$2,101,253)	(\$2,202,574)	(\$2,906,984)	(\$3,134,747)

If inflation could be contained to 2 percent per year for all expenditure categories, net revenues would improve fairly significantly for the [City](#).

TABLE 2: NET GENERAL FUND REVENUES PER YEAR – NO GROWTH; LOWER **2%** INFLATION RATES

	2024	2025	2026	2027	2028
General Fund Net Revenues per Year	(\$988,330)	(\$1,468,627)	(\$1,445,168)	(\$2,017,573)	(\$2,033,544)



Financial Sustainability (Zions Bank Data)

“Low Growth” Scenario (Based off of 2021-2022 FY Actual Expenditures)

TABLE 3: NET GENERAL FUND REVENUES PER YEAR – LOW RESIDENTIAL GROWTH SCENARIO; HIGHER INFLATION RATES

	2024	2025	2026	2027	2028
New Impacts per Year					
Single-Family Residential Units	50	50	50	50	50
Multi-Family Residential Units	50	50	50	50	50
Non-Residential SF	252,648	304,920	339,768	304,920	339,768
Retail SF	43,560	43,560	43,560	43,560	43,560
Office SF	34,848	-	34,848	-	34,848
Business Park SF	174,240	261,360	261,360	261,360	261,360
Hotel SF	-	-	-	-	-
Net New Revenues – New Growth by Year	\$643,537	\$729,360	\$663,272	\$741,703	\$662,371
General Fund Net Revenues with New Growth Combined	(\$836,571)	(\$1,434,116)	(\$1,555,577)	(\$2,407,689)	(\$2,674,891)



Financial Sustainability (Zions Bank Data)

“High Growth” Scenario (Based off of 2021-2022 FY Actual Expenditures)

TABLE 4: NET GENERAL FUND REVENUES PER YEAR – MEDIUM RESIDENTIAL GROWTH SCENARIO; HIGHER INFLATION RATES

	2024	2025	2026	2027	2028
New Impacts per Year					
Single-Family Residential Units	150	150	150	150	150
Multi-Family Residential Units	100	100	100	100	100
Non-Residential SF	252,648	304,920	339,768	304,920	339,768
Retail SF	43,560	43,560	43,560	43,560	43,560
Office SF	34,848	-	34,848	-	34,848
Business Park SF	174,240	261,360	261,360	261,360	261,360
Hotel SF	-	-	-	-	-
Net New Revenues – New Growth by Year	\$999,647	\$1,080,685	\$1,020,552	\$1,096,836	\$1,015,252
General Fund Net Revenues with New Growth Combined	(\$481,640)	(\$1,106,001)	(\$1,350,764)	(\$2,327,763)	(\$2,736,264)





Santaquin

Questions or Comments

Parking Lot Items:

- ???
- ???
- ???
- ???
- ???
- ???
- ???

Round Table Closing Comments





Thank You!

