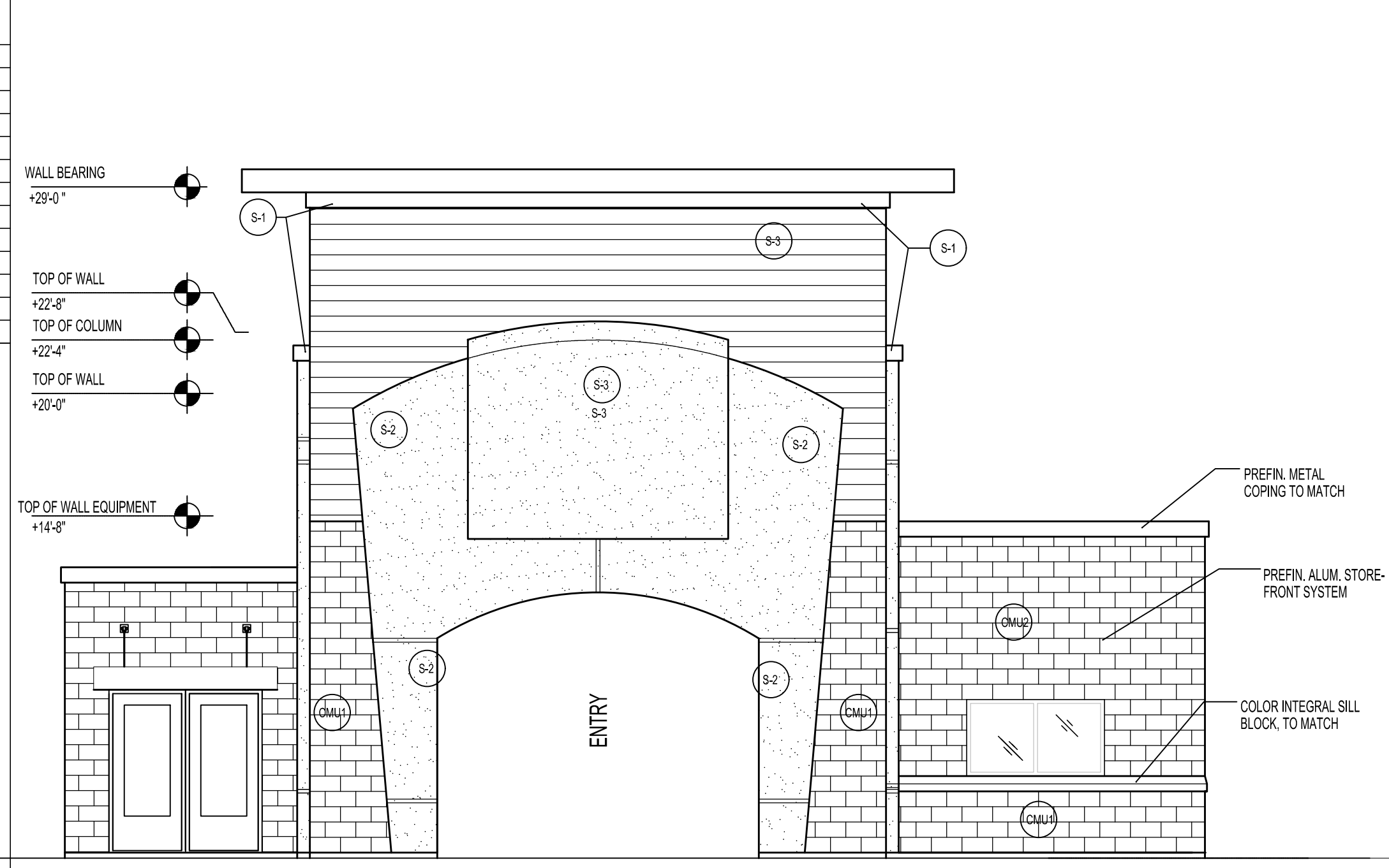
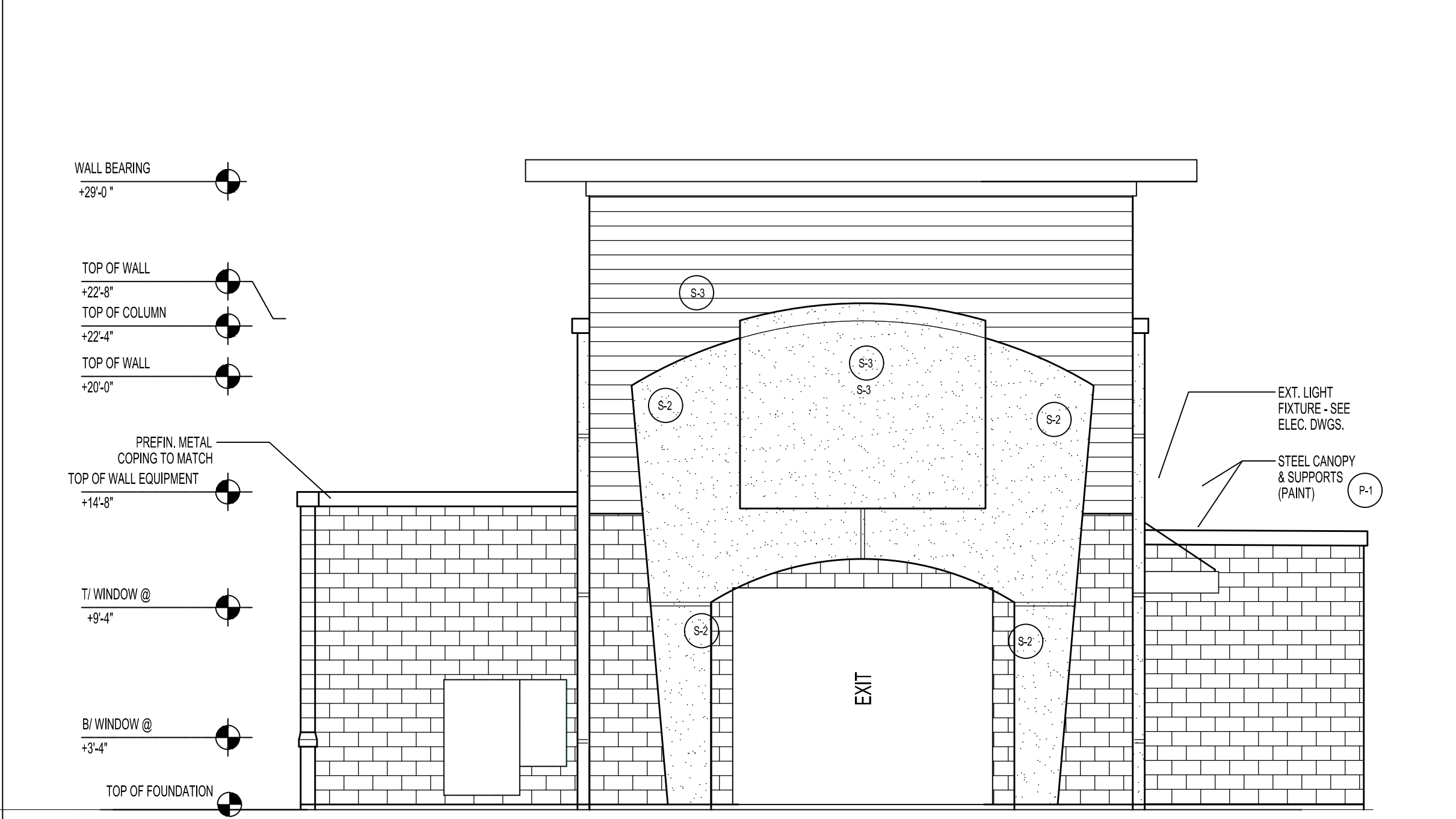


EXTERIOR FINISH SCHEDULE		
LABEL	MATERIAL	COLOR / MANUFACTURER
CMU-1	SPLIT-FACE CMU	INTEGRAL COLOR (DARK GREY) TO MATCH SW 7089 'IRON ORE'
CMU-2	SMOOTH FACE CMU	INTEGRAL COLOR (LIGHT GREY) TO MATCH SW 7655 'STAMPED CONCRETE'
S-1	STUCCO	MATCH SW 6755 'STARBOARD' (GREEN)
S-2	STUCCO	MATCH SW 6902 'Decisive Yellow'
S-3	CEMENTITIOUS FIBER BOARD	MATCH SW 7004 'SNOWBOUND' (WHITE)
P-1	PAINT	SW 6755 'STARBOARD' (GREEN)
P-2	PAINT	SW 6902 'Decisive Yellow'
P-3	PAINT	SW 7025 'BACKDROP' (DARK GREY)
M-1	STANDING SEAM ROOFING	MATCH SW 6755 'STARBOARD' (GREEN)

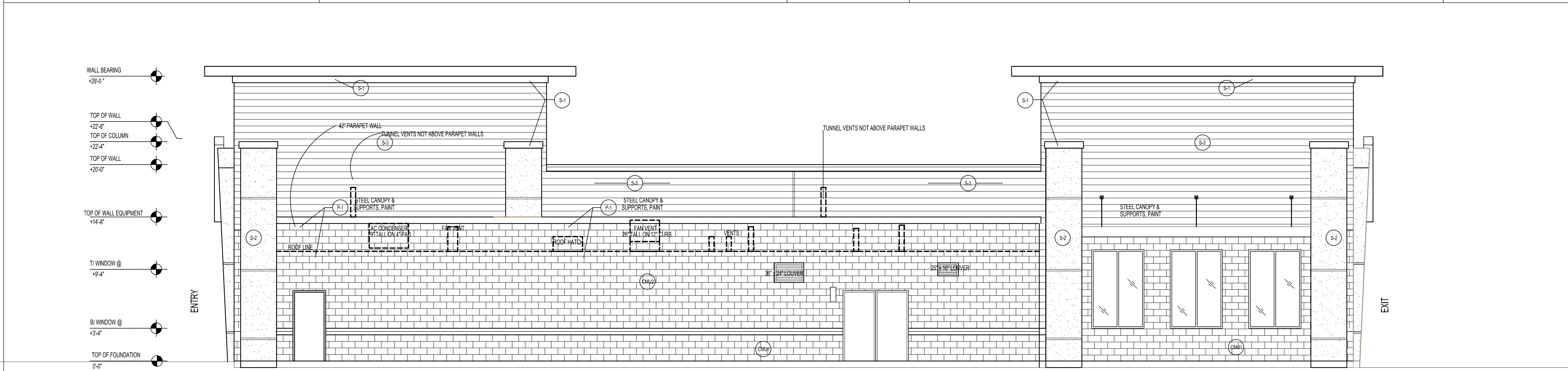


ENTRY EXTERIOR ELEVATION SCALE: 3/16" = 1'-0" 04

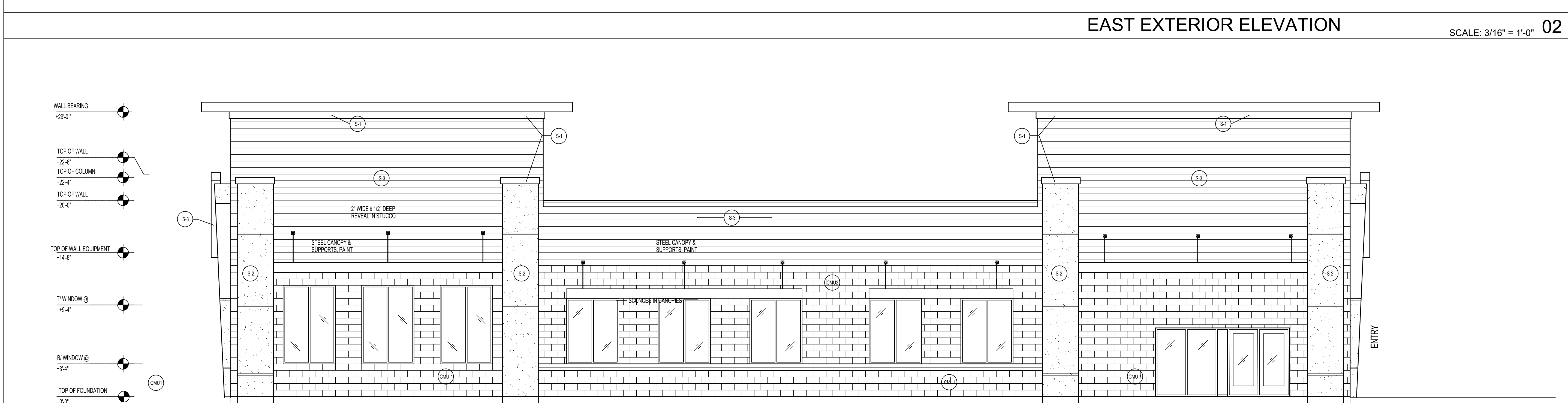


EXIT EXTERIOR ELEVATION SCALE: 3/16" = 1'-0" 03

PROJECT NOTES		
EXTERIOR BUILDING SUMMARY		
EAST SIDE ELEVATION 2,900 S.F.		
WEST SIDE ELEVATION 2,900 S.F.		
ENTRY 1,100 S.F.		
EXIT 1,100 S.F.		
TOTAL ELEVATIONS SQUARE FOOTAGE 8,000		
FINISH SCHEDULE - EXTERIOR ELEVATIONS 8,000 TOTAL S.F.		
CEMENTITIOUS FIBER BOARD	2,500 S.F.	31.0%
STUCCO	1,150 S.F.	14.5%
CMU SPLIT FACE	1,440 S.F.	18%
CMU SMOOTH FACE	1,200 S.F.	15%
METAL FASCIA AND AWNINGS	695 S.F.	9%
DOORS	485 S.F.	6%
WINDOWS	530 S.F.	6.5%
TOTAL	8,000 S.F.	100%
PRIMARY MATERIALS 4,635 S.F.		
CMU SPLIT FACE, CEMENTITIOUS FIBER BOARD, METAL FASCIA AND AWNINGS		
SECONDARY MATERIAL 2,350 S.F.		
STUCCO, SMOOTH FACE BLOCK		
DOORS AND WINDOWS 1,015 S.F.		
TOTAL S.F. MINUS DOORS AND WINDOWS	6,985 S.F.	
PERCENTAGE OF PRIMARY MATERIAL	4,635 S.F.	66%
PERCENTAGE OF SECONDARY MATERIAL	2,350 S.F.	34%



EAST EXTERIOR ELEVATION SCALE: 3/16" = 1'-0" 02



WEST EXTERIOR ELEVATION SCALE: 3/16" = 1'-0" 01

--

PROJECT TITLE
Quick Quack Car Wash
Santaquin



DATE:	March 2024
REVISIONS:	

A200